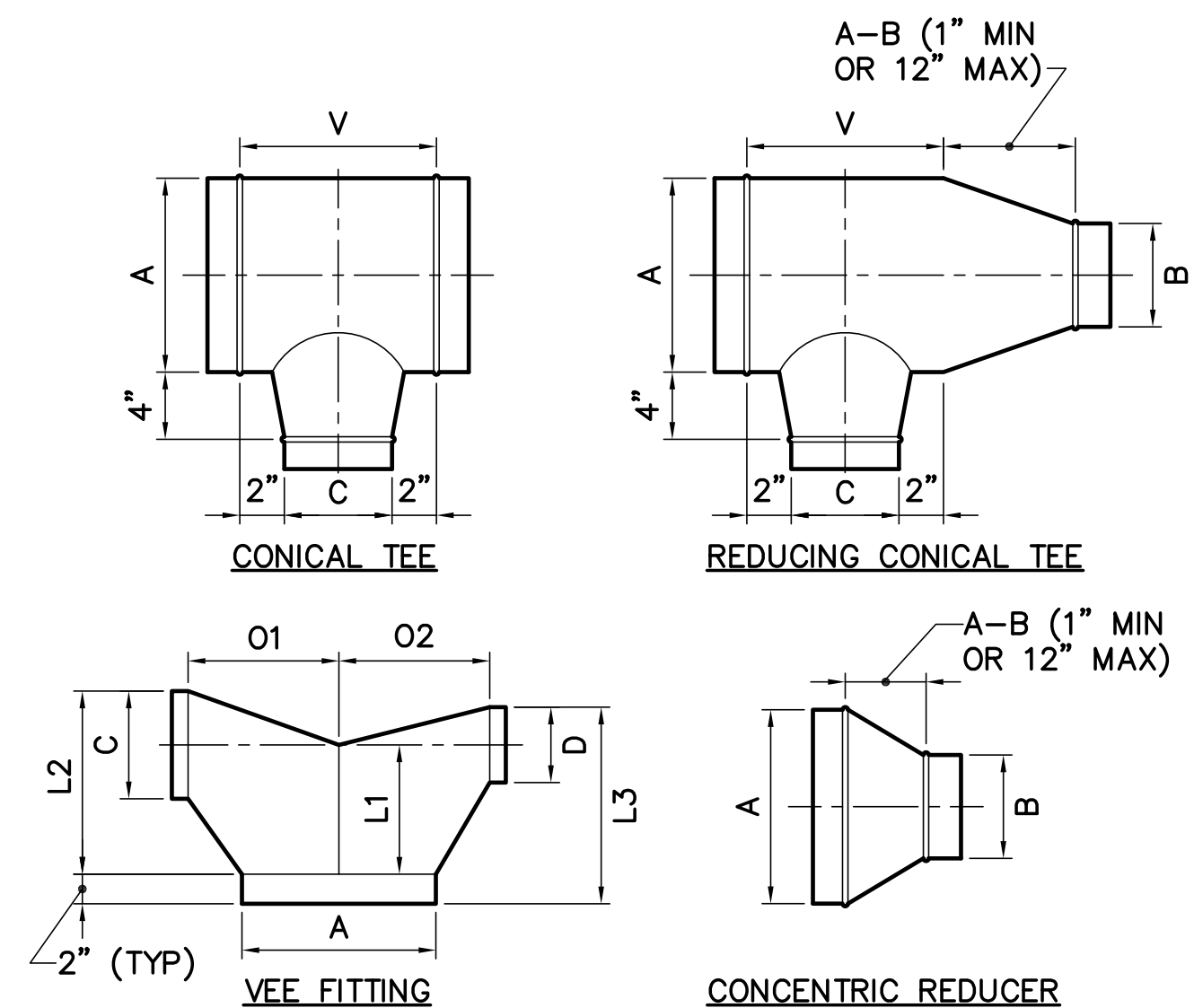
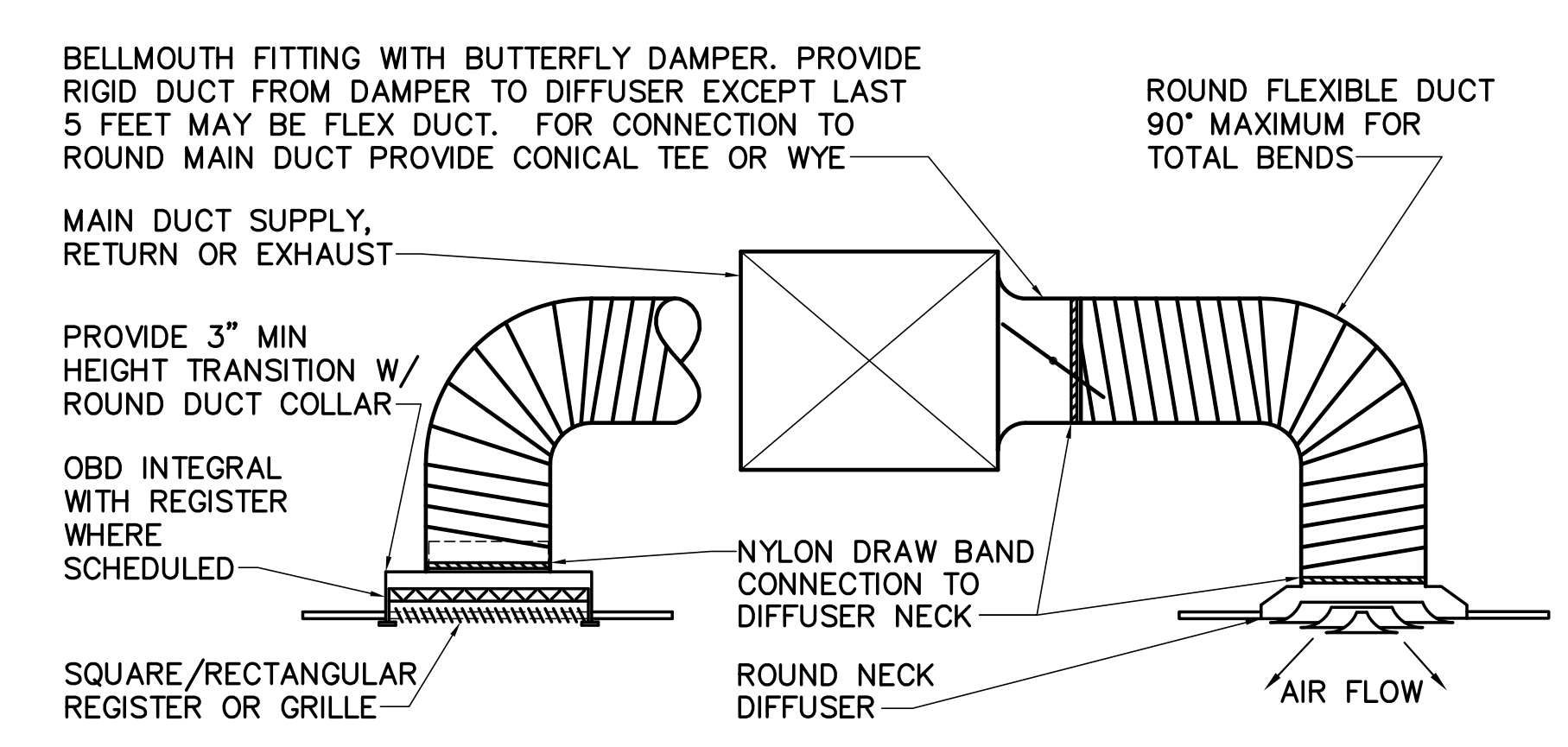


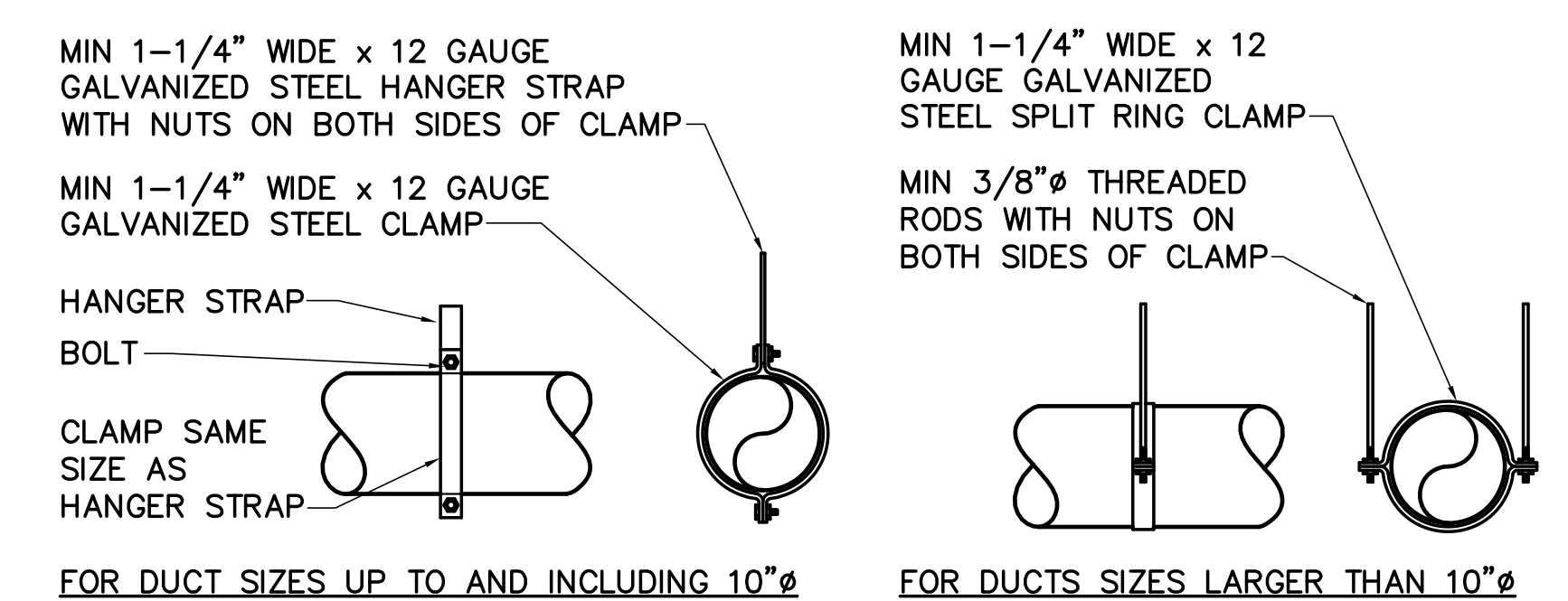
**1 RECTANGULAR DUCT TRANSITIONS DETAIL**  
M-501 NOT TO SCALE



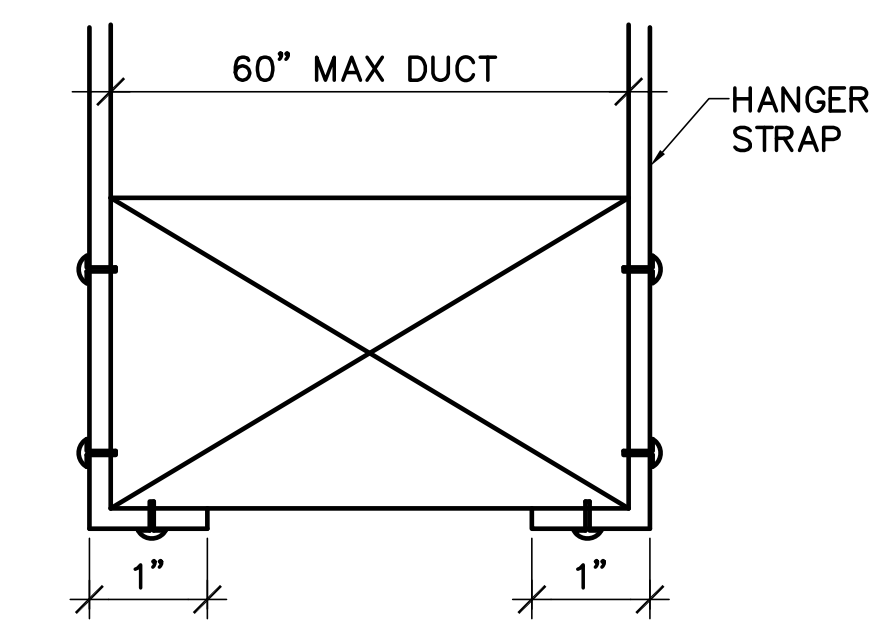
**2 TYPICAL ROUND DUCT FITTINGS DETAIL**  
M-501 NOT TO SCALE



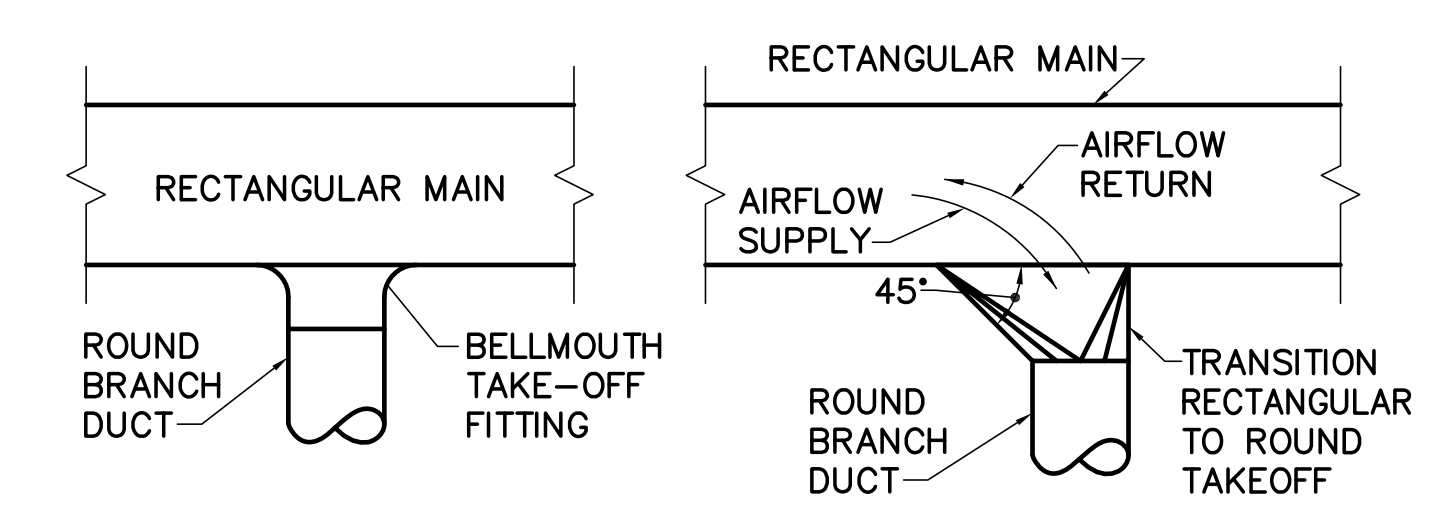
**3 DIFFUSER AND REGISTER RUNOUT DETAIL**  
M-501 NOT TO SCALE



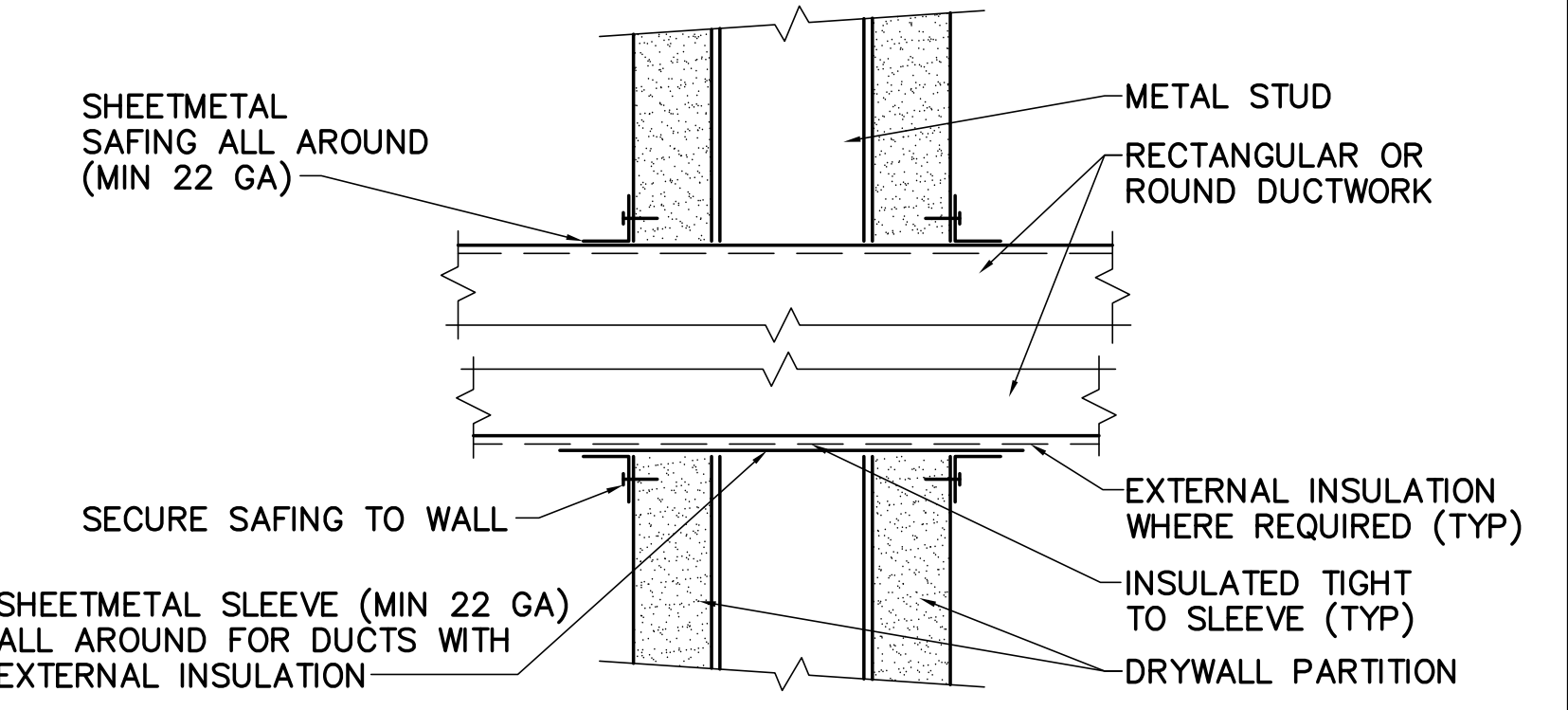
**5 ROUND DUCT HANGER DETAIL**  
M-501 NOT TO SCALE



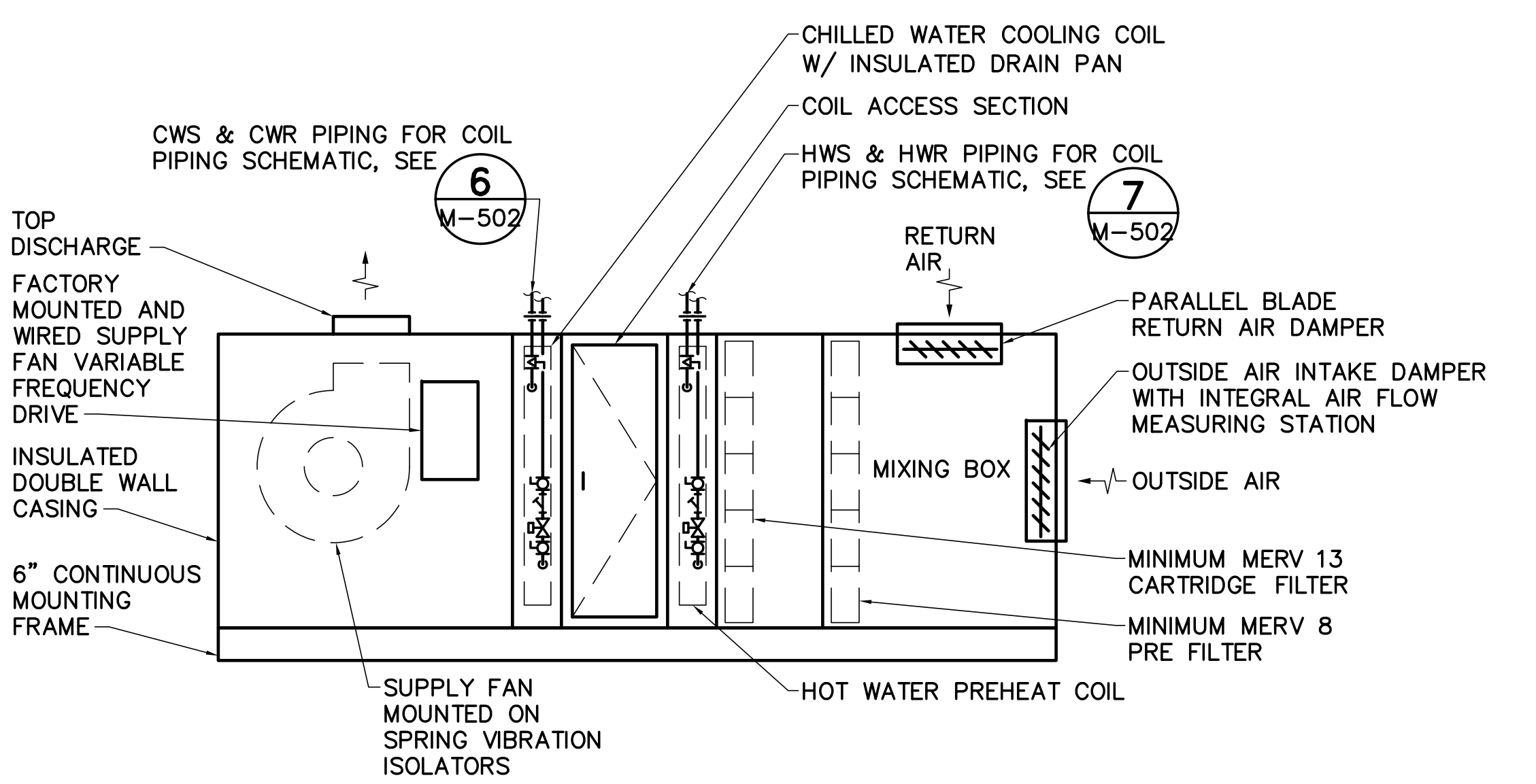
**6 DUCT SUPPORT ATTACHMENTS DETAIL**  
M-501 NOT TO SCALE



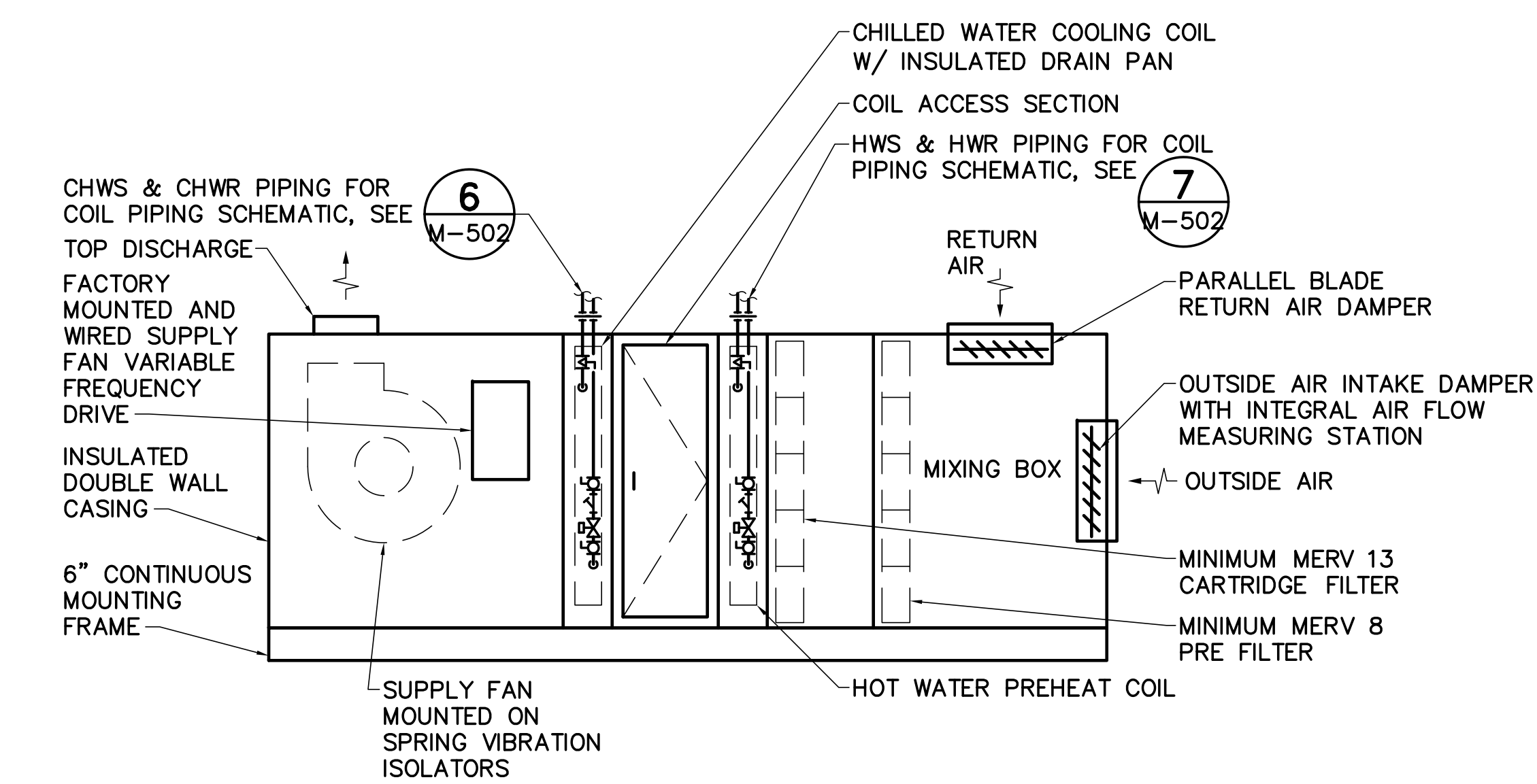
**7 TYPICAL ROUND BRANCH DUCT CONNECTIONS TO RECTANGULAR MAIN**  
M-501 NOT TO SCALE



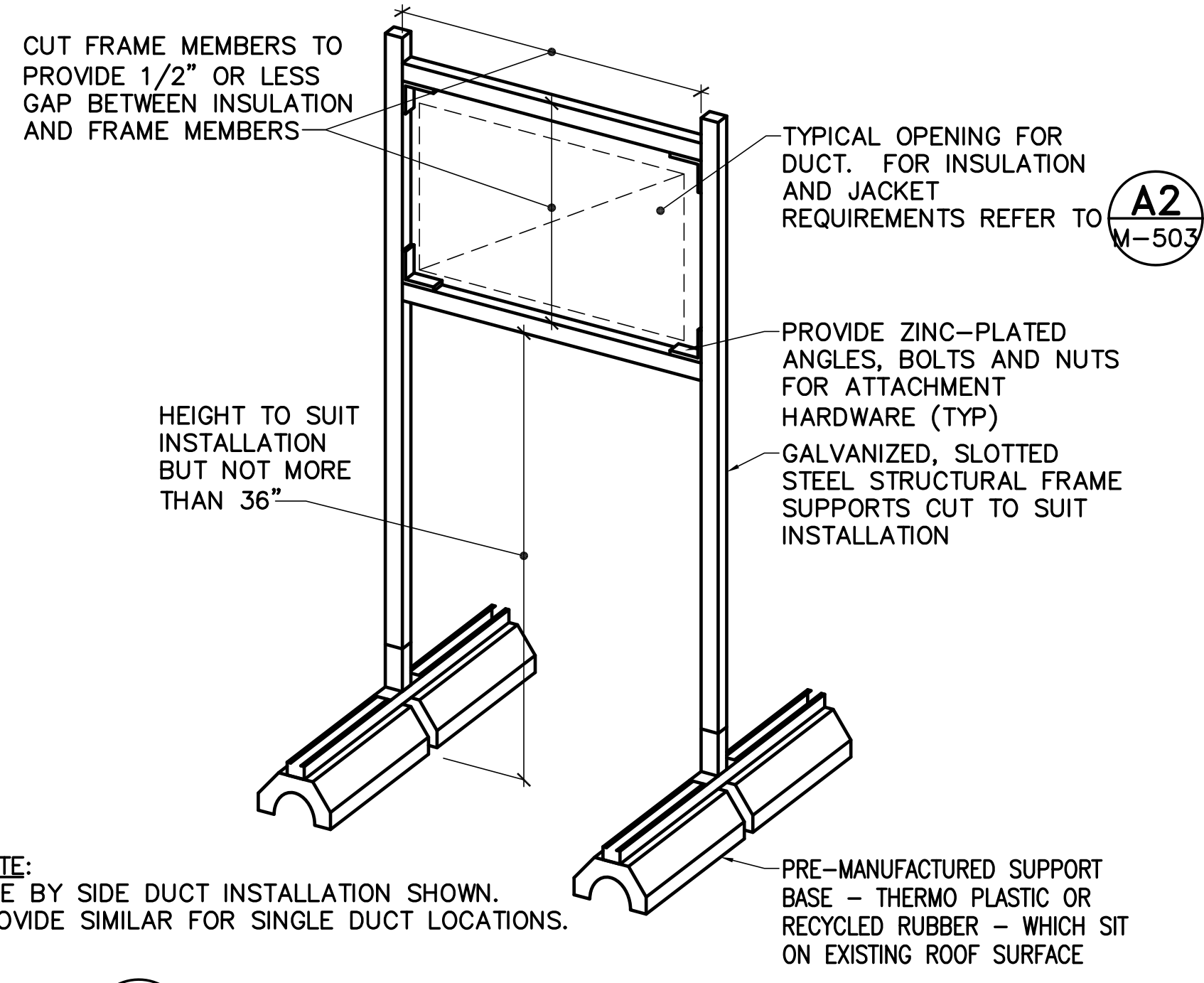
**8 DUCT PENETRATION THRU NON-FIRE RATED WALL**  
M-501 NOT TO SCALE



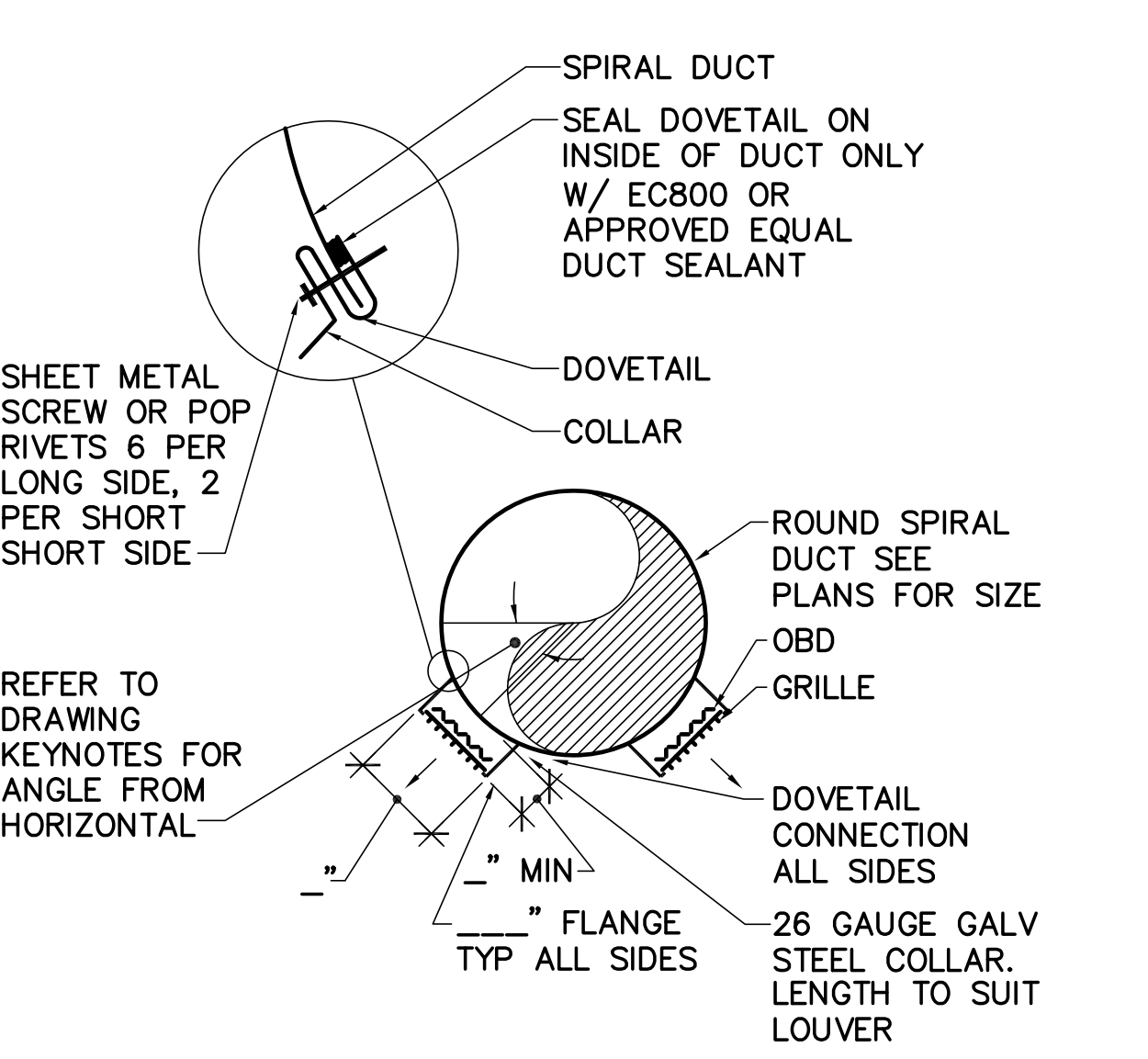
**9 AHU-1 & AHU-2 AIR HANDLING UNIT DIAGRAM**  
M-501 NOT TO SCALE



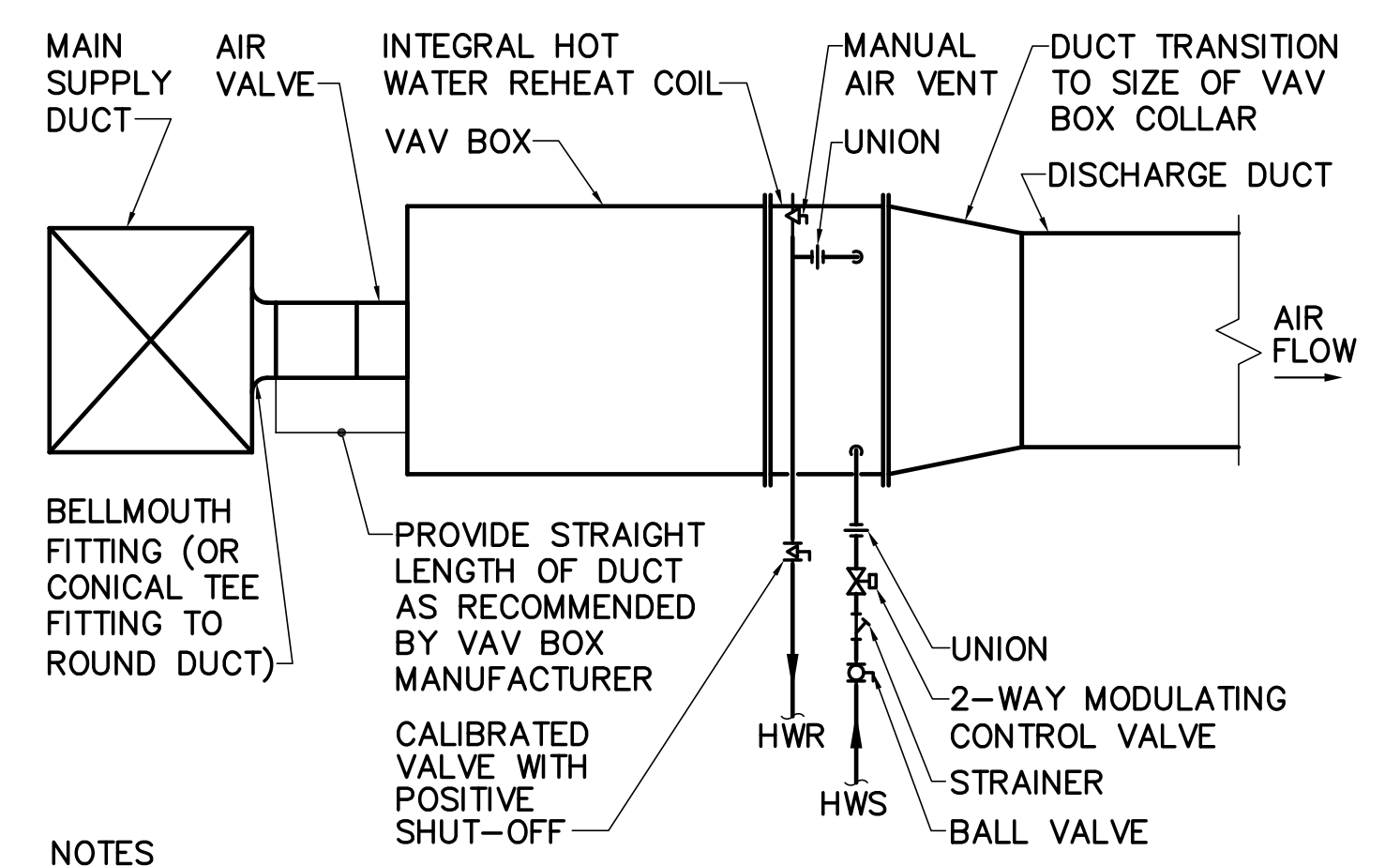
**10 AHU-3 AIR HANDLING UNIT DIAGRAM**  
M-501 NOT TO SCALE



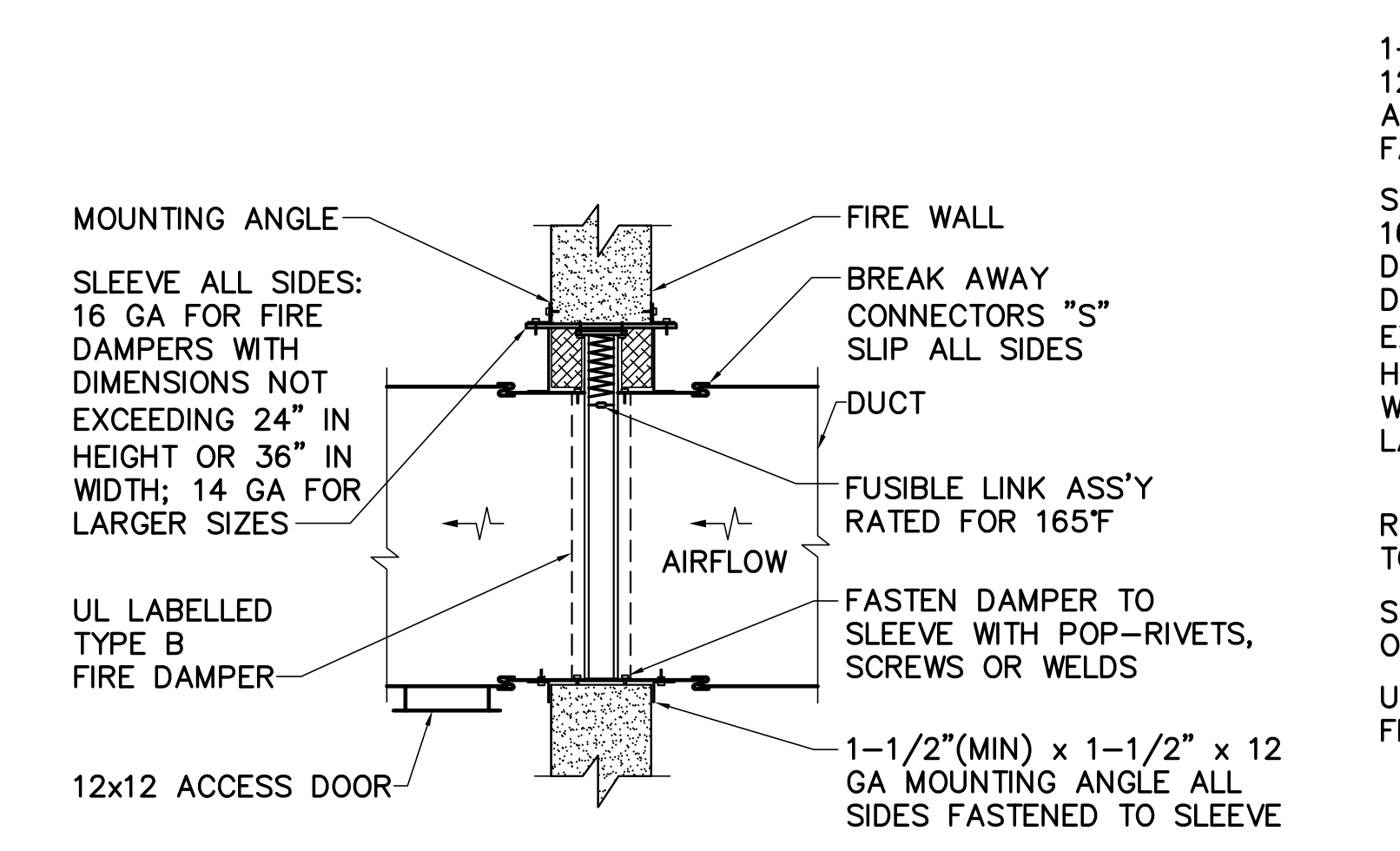
**11 ROOF MOUNTED DUCT SUPPORT DETAIL**  
M-501 NOT TO SCALE



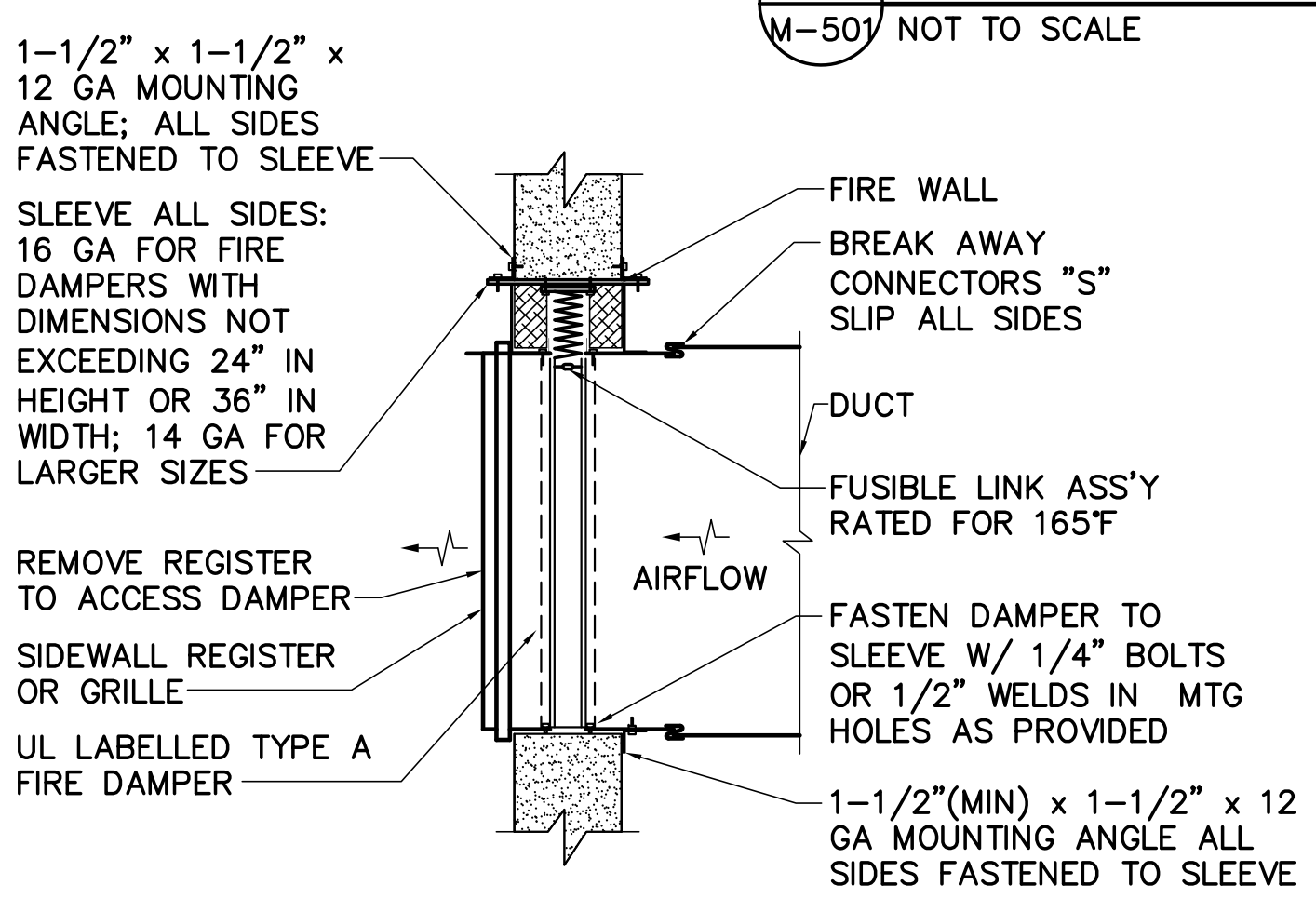
**12 REGISTER DETAIL**  
M-501 NOT TO SCALE



**13 TYPICAL VAV BOX INSTALLATION DIAGRAM**  
M-501 NOT TO SCALE



**13 FIRE DAMPER DETAIL**  
M-501 NOT TO SCALE



- NOTES**
- FOR HORIZONTAL FLOOR INSTALLATION PROVIDE FIRE DAMPER WITH SPRING LOADED DAMPER BLADES.
  - FASTEN ANGLES TO SLEEVE WITH POP-RIVETS, SCREWS OR WELDS AT 8-INCH ON CENTER, MINIMUM 2 PER SIDE, 4 SIDES OF OPENING ON BOTH SIDES OF DAMPER.
  - PROVIDE CLEARANCE BETWEEN DAMPER SLEEVE OR DAMPER AND THE FIRE-RATED WALL, PARTITION OR FLOOR IN ACCORDANCE WITH THE FIRE DAMPER MANUFACTURER. IF REQUIRED BY THE DAMPER MANUFACTURER, PROVIDE FIRESTOPPING IN THIS SPACE ON ALL SIDES TO MAINTAIN FIRE RATING.
  - USE FOR GALVANIZED SHEET METAL DUCT ONLY.