

VERTICAL OPENING SCHEDULE

VERTICAL OPENING	2009 IBC OPENING CLASSIFICATION AND PROTECTION REQUIREMENTS	2009 NFPA 101 OPENING CLASSIFICATION AND PROTECTION REQUIREMENTS
1-TWO STORY EXIT STAIR 2-TWO STORY EXIT STAIR 3-TWO STORY EXIT STAIR	1022.1 INTERIOR EXIT STAIRWAY. 1-HOUR FIRE BARRIERS AT BOTH FLOOR LEVELS.	7.1.3.2.1(1) EXIT STAIR. 1-HOUR FIRE BARRIERS AT BOTH FLOOR LEVELS.
4-TWO STORY ELEVATOR SHAFT	708.2 AND 708.14 SHAFT ENCLOSURE. 1-HOUR FIRE BARRIERS AT BOTH FLOOR LEVELS.	8.6.4 AND 8.6.5 SHAFT ENCLOSURE. 1-HOUR FIRE BARRIERS AT BOTH FLOOR LEVELS.
5-PRE-FUNCTION OPEN TO SMALL FUNCTION ROOM BELOW	404 ATRIUM. REQUIRES 1-HOUR ENCLOSURE. SMOKE CONTROL NOT REQUIRED FOR 2-STORY SPACE. SPACE WILL ALTERNATIVELY BE DESIGN TO LISTED 2009 NFPA 101 CRITERIA. ALSO PLEASE NOTE 2015 IBC HAS NO REQUIREMENTS FOR TWO STORY SPACE UNDER SECTION 712.1.9 AND SECTION 1019.3, EXCEPTION 1.	8.6.6. COMMUNICATING SPACE WITH SMOKE DETECTION FOR IMPROVED OCCUPANT NOTIFICATION - NEEDS AHJ APPROVAL. SEPARATED FROM REMAINDER OF BUILDING WITH SMOKE BARRIERS.
6-OPEN TO FUNCTION ROOM BELOW	708.2 EXCEPTION 7 NO SHAFT ENCLOSURE REQUIRED	8.6.8.2 CONVENIENCE OPENING. SEPARATED FROM CORRIDOR BY SMOKE PARTITION.

GENERAL SHEET NOTE:

- SEE SHEET G-102 FOR GENERAL NOTES AND FIRE RATING LEGEND.
- KEYNOTES: (THIS SHEET ONLY)**
- MAIN EXIT PROVIDES CAPACITY FOR HALF OF ASSEMBLY OCCUPANTS:
 - PRE-FUNCTION/SMALL FUNCTION ROOM AND ADJACENT STUDY ROOMS: 117/2=59
 - CLASSROOM C: 183/2=92
 - 59+92=151
 - CAPACITY IS 210
 - ASSEMBLY AND BUSINESS OCCUPANCIES ARE ISOLATED BY 1-HOUR FIRE BARRIER OCCUPANCY SEPARATION.

OPEN STAIR S04

	WIDTH	CAPACITY
DOOR	NA	-
STAIR	51"	170
LIMIT		170
USE		61

VERTICAL OPENING 3

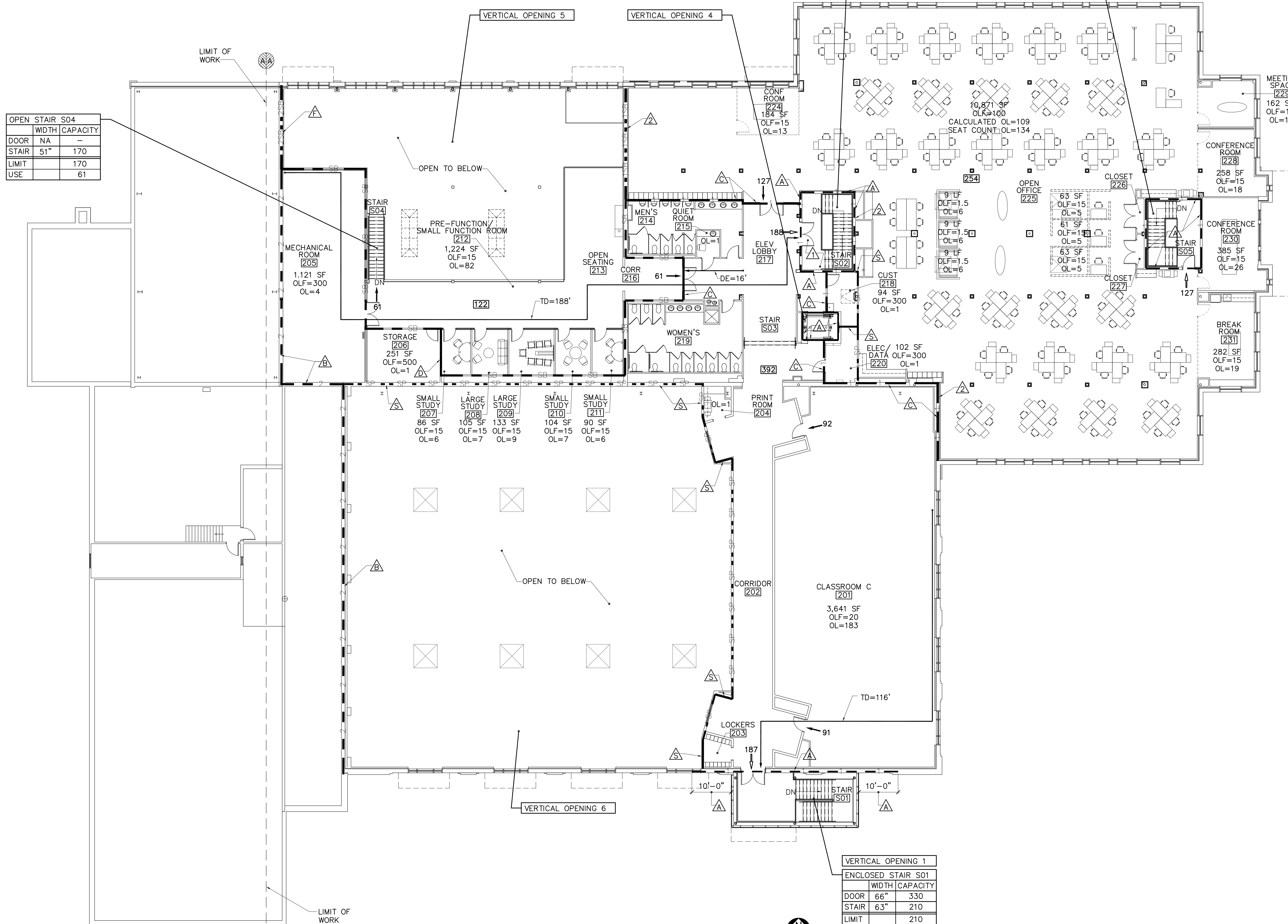
	WIDTH	CAPACITY
ENCLOSED STAIR S02		
DOOR	66"	330
STAIR	63"	210
LIMIT		210
USE		188

VERTICAL OPENING 2

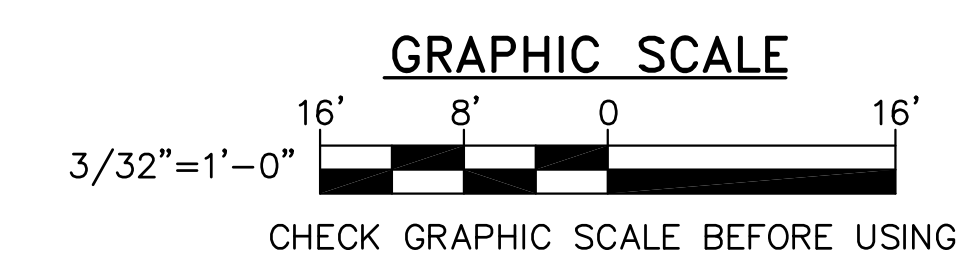
	WIDTH	CAPACITY
ENCLOSED STAIR S03		
DOOR	32"	160
STAIR	55"	183
LIMIT		160
USE		127

VERTICAL OPENING 1

	WIDTH	CAPACITY
ENCLOSED STAIR S01		
DOOR	66"	330
STAIR	63"	210
LIMIT		210
USE		187

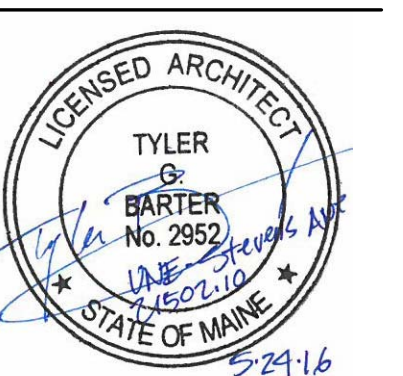


1 SECOND FLOOR EGRESS AND FIRE RATING PLAN
G-103 SCALE: 3/32"=1'-0"



OAK POINT ASSOCIATES

REGISTERED ARCHITECTS - PLANNING
231 Main Street, Biddeford, Maine 04005 (1) 207-283-0183 (F) 207-283-4283
www.oakpoint.com



DESIGNED BY: LEC
DRAWN BY: SAS
CHECKED BY: TGB
PROJECT: 21502.10

UNIVERSITY OF NEW ENGLAND
PORTLAND CAMPUS
STEVEN AVENUE ARMORY
716 STEVENS AVE
PORTLAND, MAINE 04103
(1) 207-283-0171

RENOVATIONS TO THE
STEVEN AVENUE ARMORY

SECOND FLOOR
EGRESS AND
FIRE RATING
PLAN

SCALE: AS NOTED
DATE: 05-24-16

DWG. **G-103**

SHEET: 5 OF 169