

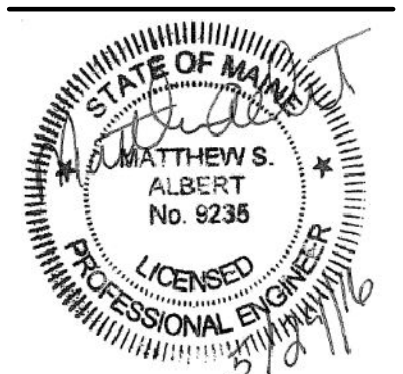
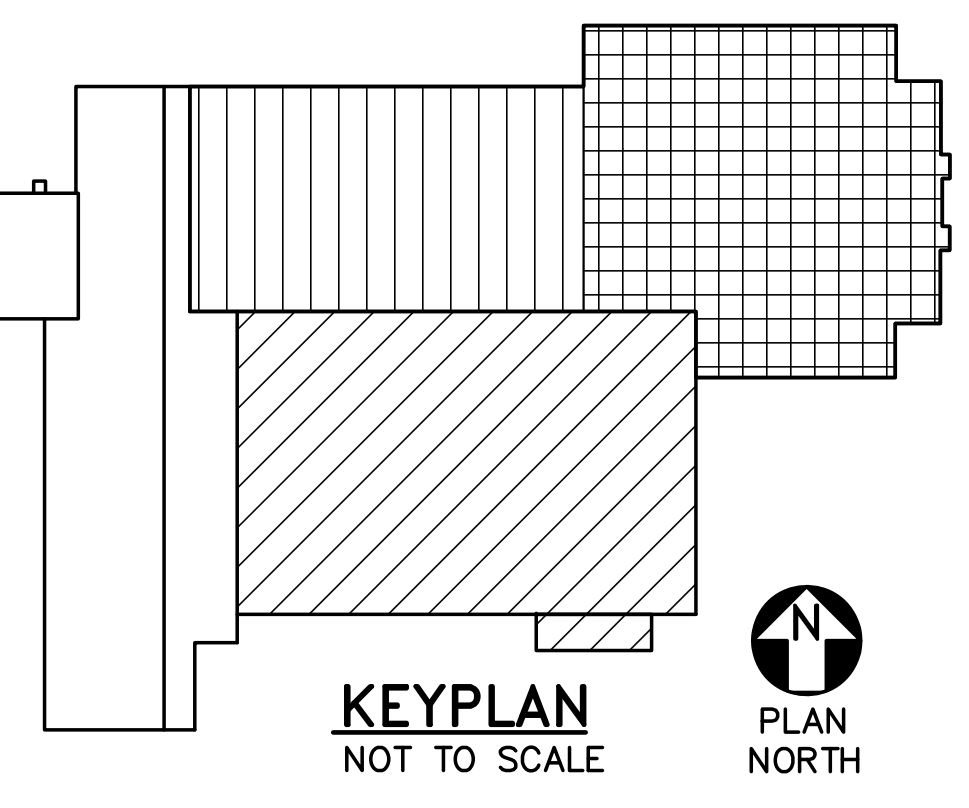
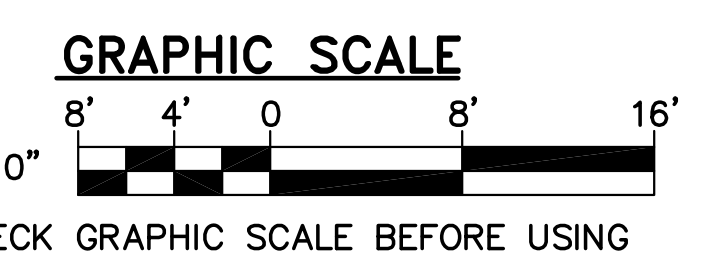
**1 FIRST FLOOR FIRE SUPPRESSION PART PLAN**  
 FX102 SCALE: 1/8"=1'-0"  
 PLAN NORTH

**DRAWING NOTE**

- 1. REFER TO GENERAL NOTES ON FX001 FOR SYSTEM REQUIREMENTS.

**DRAWING KEYNOTES**

- 1. PROVIDE LIGHT HAZARD SPRINKLER COVERAGE.
  - 2. PROVIDE ORDINARY HAZARD, GROUP 1 SPRINKLER COVERAGE.
  - 3. PROVIDE QUICK RESPONSE TYPE SPRINKLER HEADS.
  - 4. EXISTING SPRINKLER SYSTEM SERVING THE MAINE NATIONAL GUARD VEHICLE MAINTENANCE FACILITY.
  - 5. PROVIDE SPRINKLERS WITH WIRE GUARDS.
  - 6. NOTIFY THE MAINE NATIONAL GUARD VEHICLE MAINTENANCE FACILITY PERSONNEL 10 DAYS PRIOR TO COMMENCEMENT OF WORK TO RELOCATE THE SPRINKLER PIPE SERVING THIS AREA.
  - 7. PROVIDE SPRINKLER COVERAGE BELOW MEZZANINE.
  - 8. PROVIDE SPRINKLER COVERAGE BELOW STAIRS.
  - 9. PROVIDE SPRINKLER UP AND DOWN IN COLUMN ENCLOSURE. COORDINATE WITH ARCHITECTURAL DETAILS.
  - 10. THIS ROOM CONTAINS MEDICAL GRADE OXYGEN STORAGE TANK, DISTRIBUTION MANIFOLD AND OXYGEN PIPING. PROVIDE SPRINKLER COVERAGE IN ACCORDANCE WITH NFPA 13.
- 1. PROVIDE DRY-PIPE SPRINKLER COVERAGE BELOW CANOPY. COORDINATE PIPING INSTALLATION IN CANOPY WITH PENETRATIONS IN THE STRUCTURAL STEEL. REFER TO SF404
  - 2. DUE TO THE LOW DECK-TO-DECK HEIGHTS, SPRINKLER PIPING SHALL RUN NORTH-SOUTH AS INDICATED BETWEEN THE BEAMS RUNNING NORTH-SOUTH ALONG THE LETTERED COLUMN LINES. SPRINKLER PIPING SHALL NOT PASS BELOW THE NORTH-SOUTH BEAMS WITHOUT WRITTEN AUTHORIZATION FROM THE OWNER/ARCHITECT.
  - 3. PROVIDE DRY-TYPE, SIDE-WALL SPRINKLERS CONNECTED TO THE WET-PIPE SPRINKLER SYSTEM TO PROVIDE COVERAGE BELOW THE CANOPY.
  - 4. PROVIDE SPRINKLER COVERAGE BELOW STAIRS.



DESIGNED BY: MSA  
 DRAWN BY: KLG  
 CHECKED BY: CAL  
 PROJECT: 21502.10

UNIVERSITY OF NEW ENGLAND  
 PORTLAND CAMPUS  
 STEVEN AVENUE ARMORY  
 716 STEVENS AVE  
 PORTLAND, MAINE 04103  
 T (207)283-0171

RENOVATIONS TO THE  
 STEVENS AVENUE ARMORY

FIRST FLOOR  
 FIRE SUPPRESSION  
 PART PLAN

SCALE: AS NOTED  
 DATE: 05-24-16

DWG. FX102

SHEET: 109 OF 169