

MSA RDA CAL
 21502.10
 DESIGNED BY:
 DRAWN BY:
 CHECKED BY:
 PROJECT:

UNIVERSITY OF NEW ENGLAND
 PORTLAND CAMPUS
 STEVEN AVENUE ARMORY
 716 STEVENS AVE
 PORTLAND, MAINE 04103
 T (207) 283-0171

RENOVATIONS TO THE
 STEVENS AVENUE ARMORY

CRAWL SPACE
 AND ATTIC
 FIRE
 SUPPRESSION
 PLANS

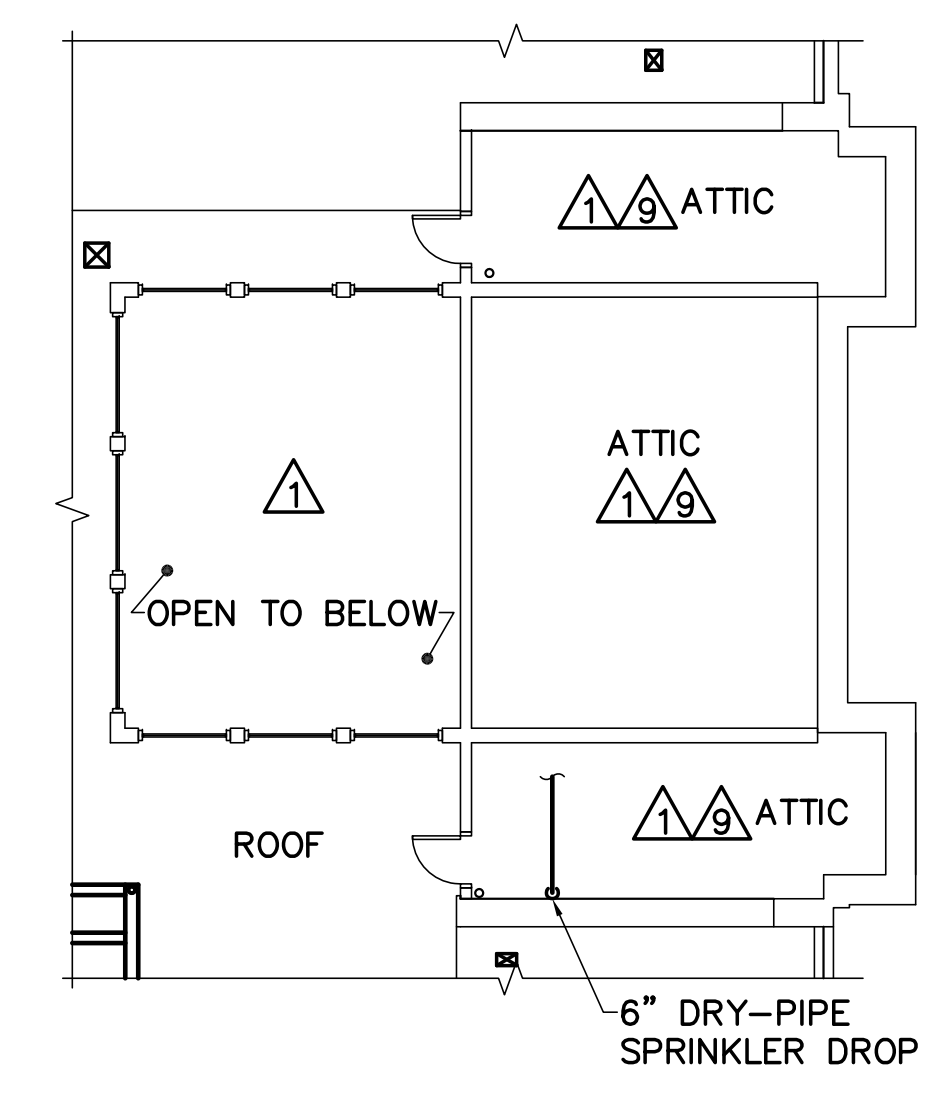
SCALE: AS NOTED
 DATE: 05-24-16
 DWG. **FX101**
 SHEET: 108 of 169

DRAWING NOTE

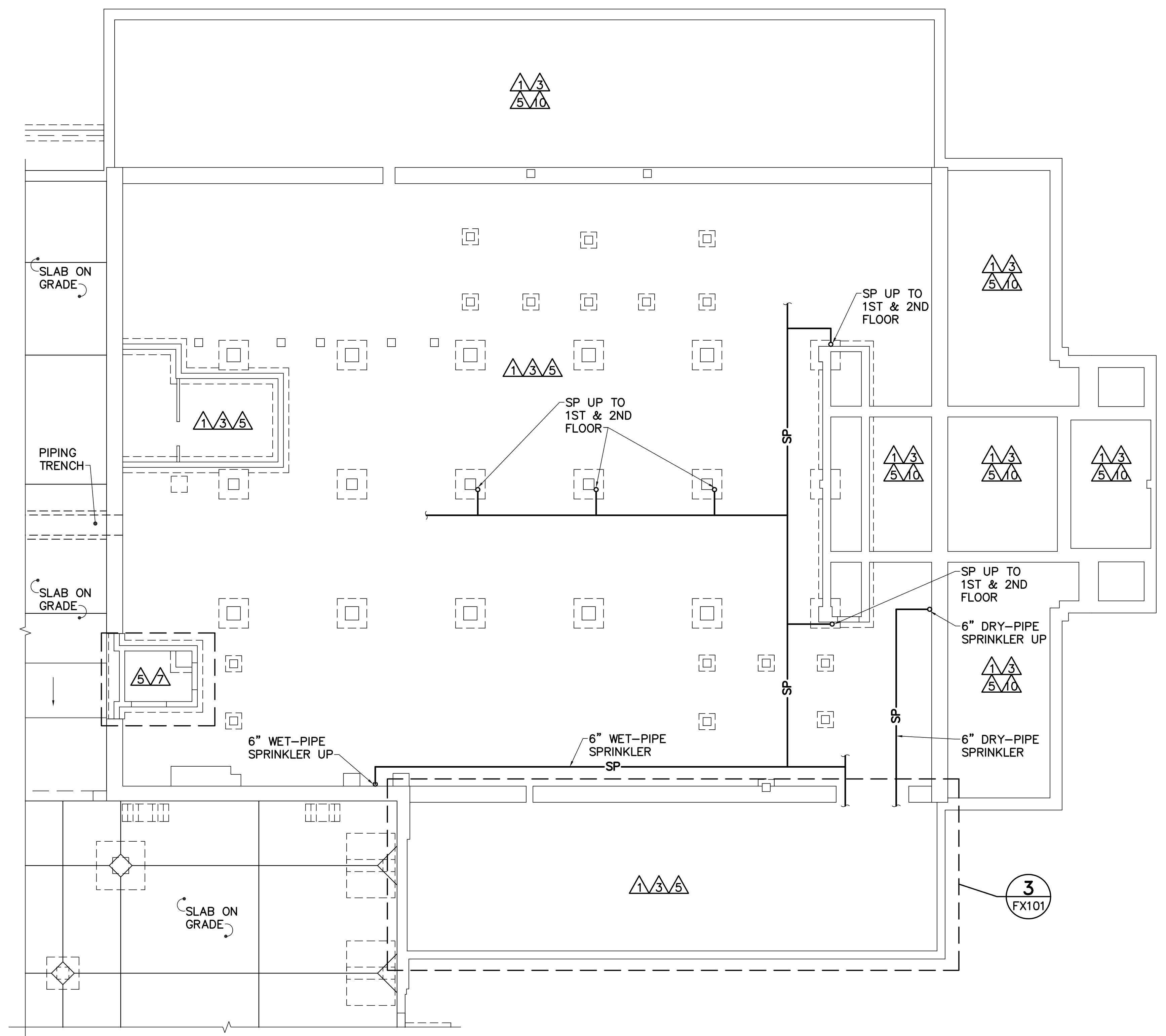
- REFER TO GENERAL NOTES ON FX001 FOR SYSTEM REQUIREMENTS.

DRAWING KEYNOTES

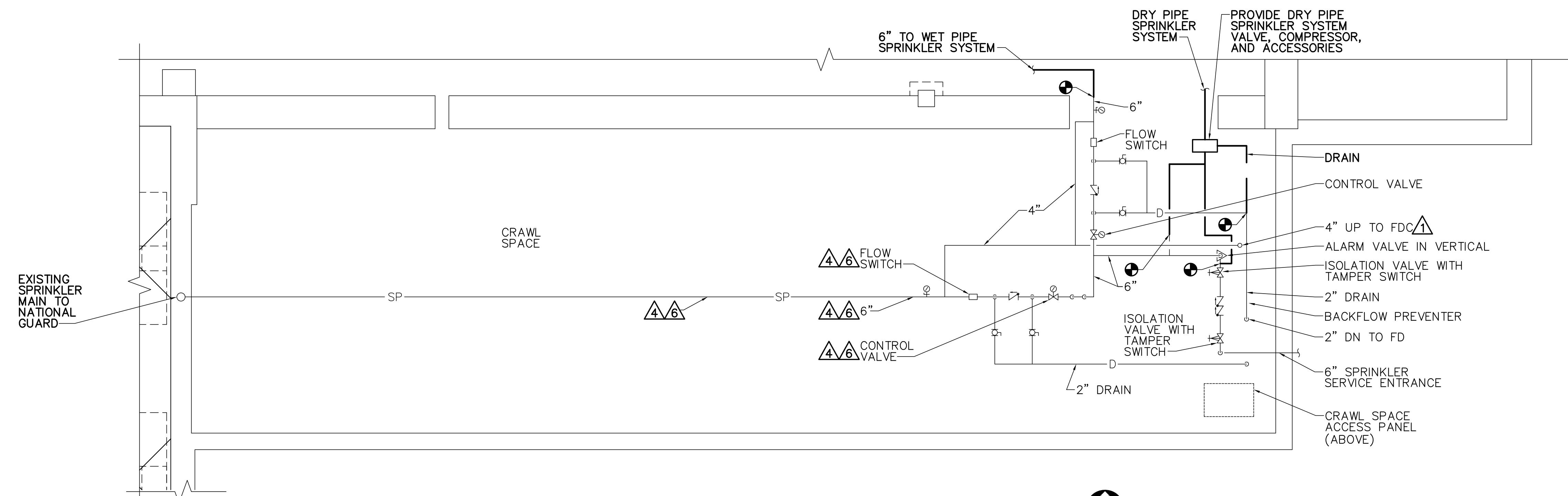
- △ PROVIDE LIGHT HAZARD SPRINKLER COVERAGE.
- △ NOT USED.
- △ PROVIDE QUICK RESPONSE TYPE SPRINKLER HEADS.
- △ EXISTING SPRINKLER SYSTEM SERVING THE MAINE NATIONAL GUARD VEHICLE MAINTENANCE FACILITY.
- △ PROVIDE SPRINKLERS WITH WIRE GUARDS.
- △ NOTIFY THE MAINE NATIONAL GUARD VEHICLE MAINTENANCE FACILITY PERSONNEL 10 DAYS PRIOR TO COMMENCEMENT OF WORK TO RELOCATE THE SPRINKLER PIPE SERVING THIS AREA.
- △ PROVIDE SPRINKLER IN ELEVATOR SHAFT PIT AND ELEVATOR MACHINE ROOM IN ACCORDANCE WITH ASME A17.1-2013. INSTALL SHAFT HEAD 24" OR LESS AFF PIT BOTTOM. PROVIDE FLOW AND TAMPER SWITCH WITH TEST DRAIN.
- △ NOT USED.
- △ PROVIDE A HYDRAULICALLY CALCULATED DRY PIPE SPRINKLER SYSTEM IN ACCORDANCE WITH NFPA 13, CURRENT EDITION.
- △ ACCESS TO THIS AREA IS LIMITED OR THERE MAY BE NO ACCESS. VERIFY CONDITIONS IN FIELD. IF THE AREA IS COMPLETELY INACCESSIBLE THEN SPRINKLER COVERAGE SHALL NOT BE REQUIRED.



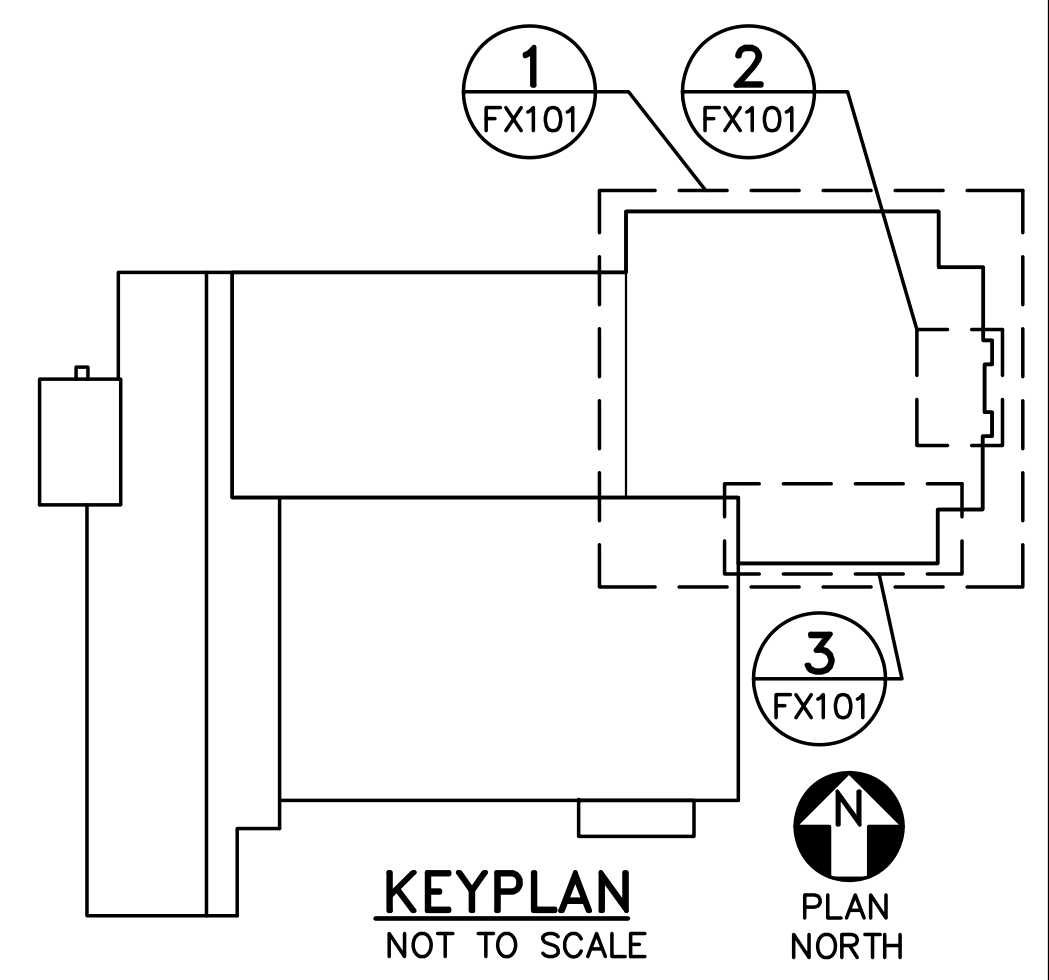
2 ATTIC FIRE SUPPRESSION PLAN
 FX101 SCALE: 1/8"=1'-0"
 PLAN NORTH



1 CRAWL SPACE FIRE SUPPRESSION PLAN
 FX101 SCALE: 1/8"=1'-0"
 PLAN NORTH



3 ENLARGED CRAWL SPACE FIRE SUPPRESSION PART PLAN
 FX101 SCALE: 1/4"=1'-0"
 PLAN NORTH



KEYPLAN
 NOT TO SCALE
 PLAN NORTH

