

DESIGNED BY: MSA  
 DRAWN BY: RDA  
 CHECKED BY: CAL  
 PROJECT: 21502.10

**UNIVERSITY OF NEW ENGLAND  
 PORTLAND CAMPUS**  
 STEVEN AVENUE ARMORY  
 716 STEVENS AVE  
 PORTLAND, MAINE 04103  
 T (207) 283-0171

**RENOVATIONS TO THE  
 STEVENS AVENUE ARMORY**

**EXISTING  
 FIRE  
 SUPPRESSION  
 PART PLANS**

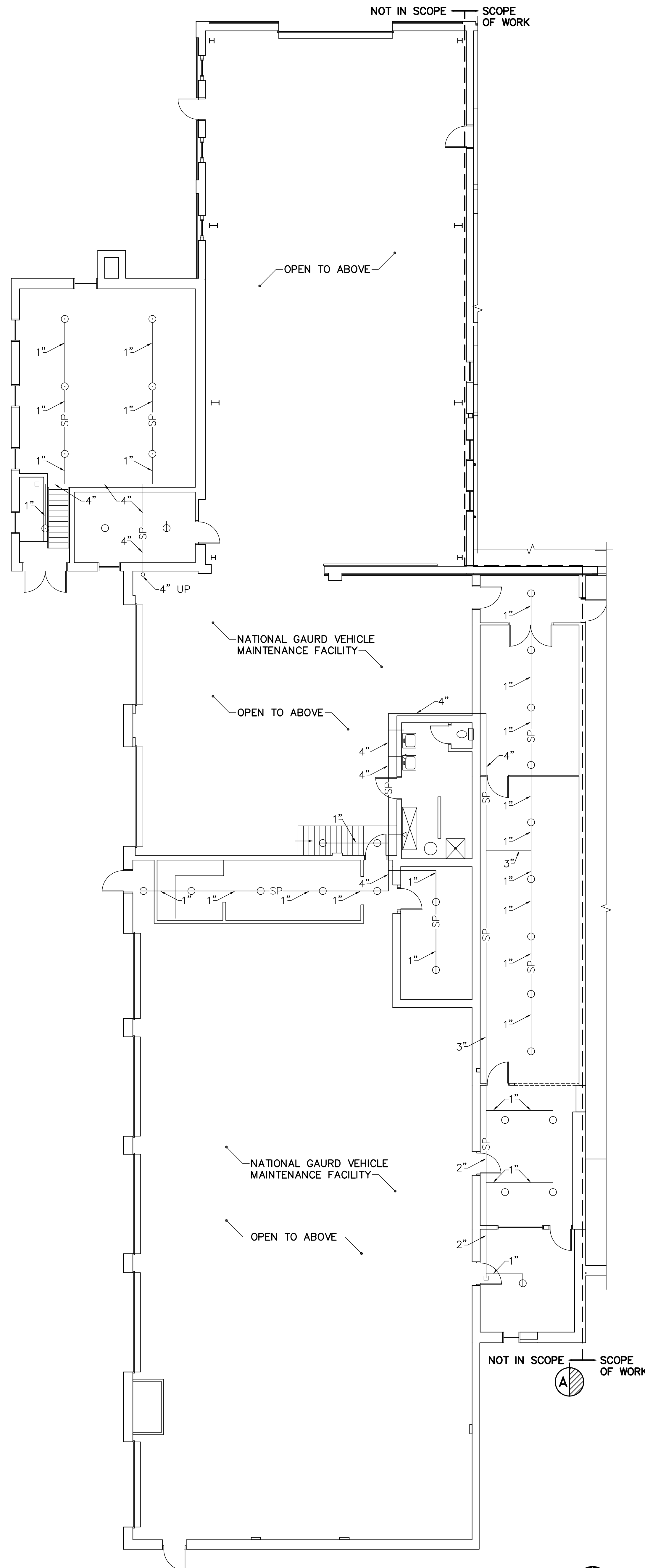
SCALE: AS NOTED  
 DATE: 05-24-16

DWG. **FX002**

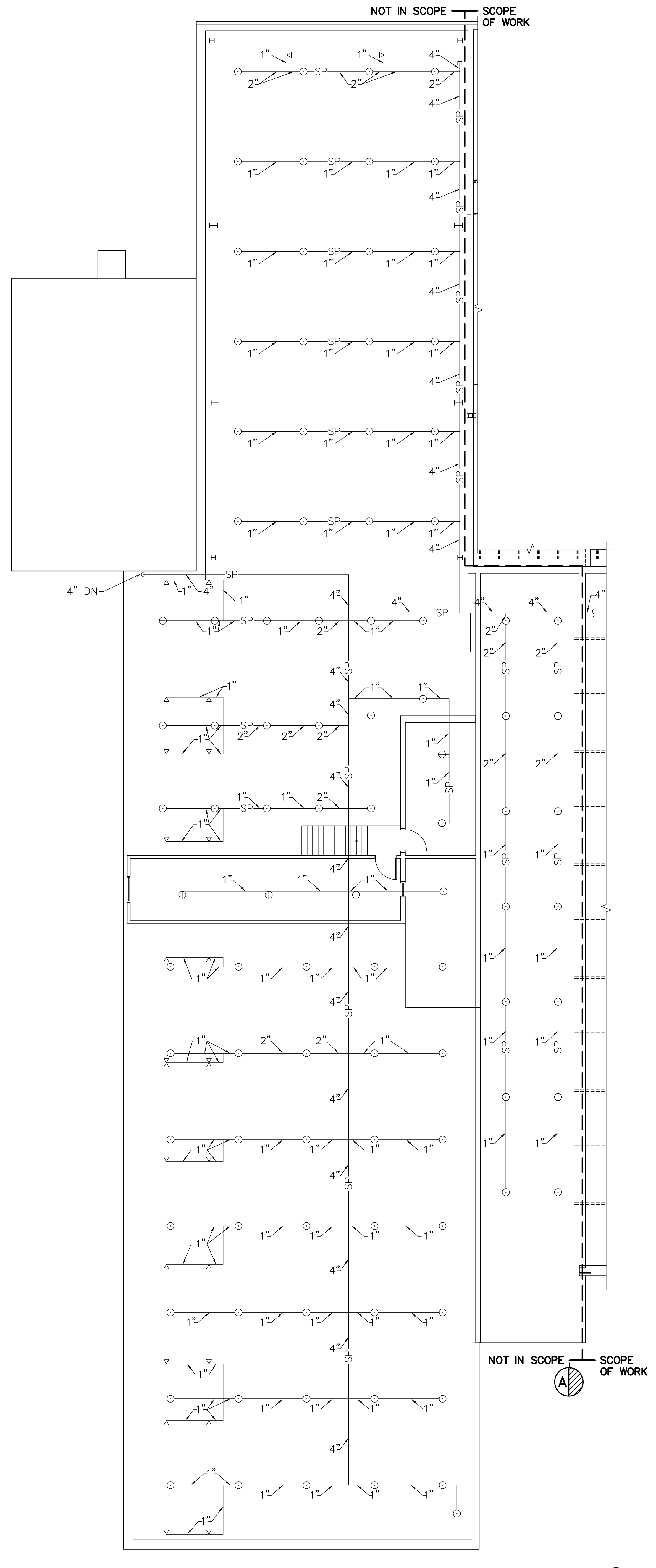
SHEET: 104 of 169

**DRAWING NOTES**

1. THIS SPRINKLER DRAWING REPRESENTS THE EXISTING SPRINKLER SYSTEM SERVING THE NATIONAL GUARD VEHICLE MAINTENANCE FACILITY, AND IS INCLUDED FOR REFERENCE ONLY.
2. SPRINKLER SYSTEM LAYOUT IS TAKEN FROM RECORD DRAWINGS, 2010. PIPING WAS NOT FIELD VERIFIED.



**1 EXISTING FIRST FLOOR FIRE SUPPRESSION PART PLAN**  
 FX002/SCALE: 1/8"=1'-0"  
 PLAN NORTH



**2 EXISTING SECOND FLOOR FIRE SUPPRESSION PART PLAN**  
 FX002/SCALE: 1/8"=1'-0"  
 PLAN NORTH

