

MISA RDA CAL
 21502.10
 DESIGNED BY:
 DRAWN BY:
 CHECKED BY:
 PROJECT:

UNIVERSITY OF NEW ENGLAND
 PORTLAND CAMPUS
 STEVEN AVENUE ARMORY
 716 STEVENS AVE
 PORTLAND, MAINE 04103
 T (207) 283-0171

RENOVATIONS TO THE
 STEVENS AVENUE ARMORY

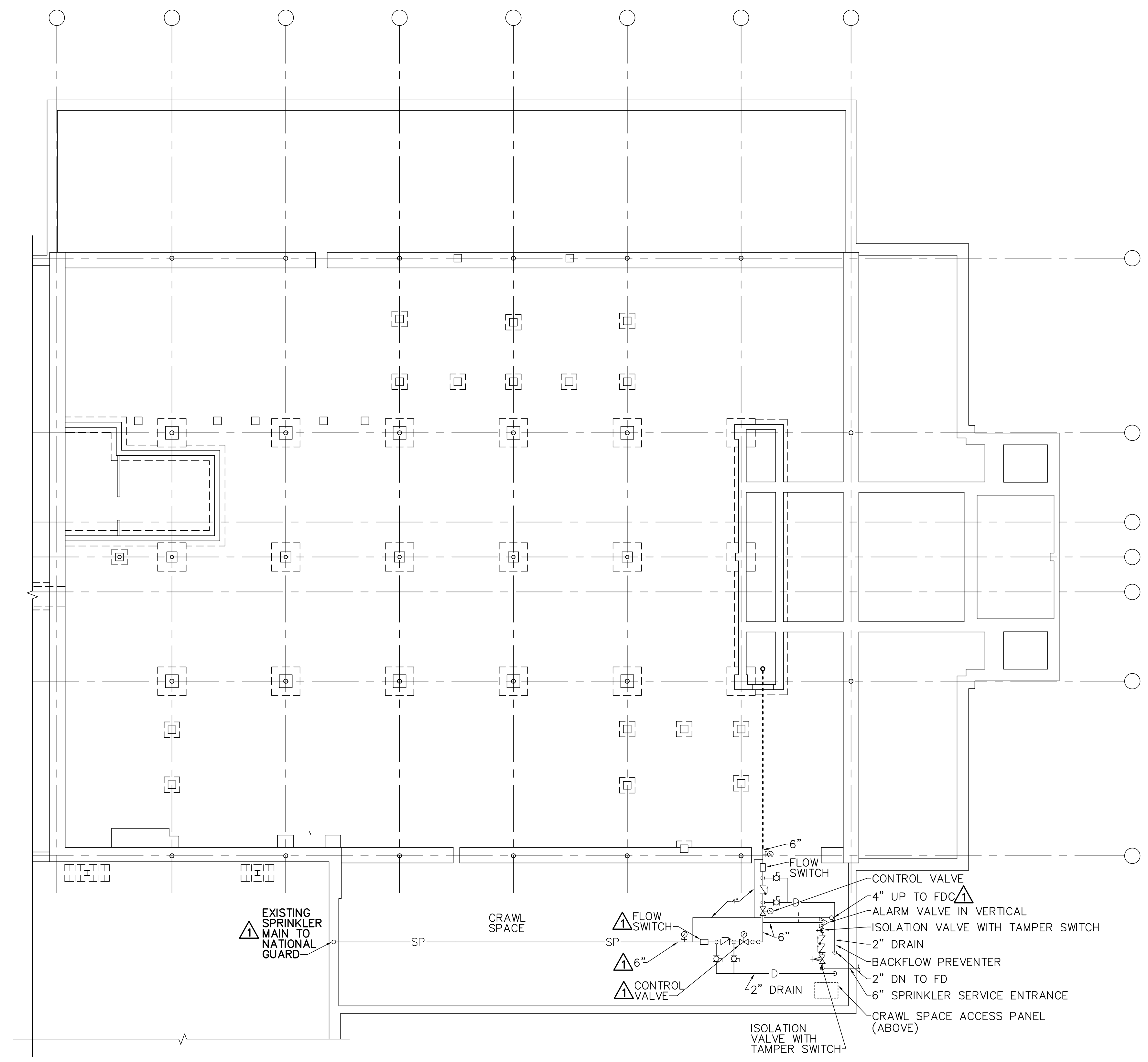
CRAWL SPACE
 FIRE
 SUPPRESSION
 REMOVALS
 PART PLAN

SCALE: AS NOTED
 DATE: 05-24-16

DWG. **FD101**

SHEET: 105 OF 169

DRAWING KEYNOTE
 EXISTING SPRINKLER SYSTEM SERVING THE NATIONAL GUARD AREA SHALL REMAIN FULLY OPERATIONAL THROUGHOUT THE DURATION OF THE PROJECT. IF A UTILITY OUTAGE IS REQUIRED, PROVIDE WRITTEN NOTICE TO THE NATIONAL GUARD 10 DAYS IN ADVANCE OF OUTAGE.



1 CRAWL SPACE FIRE SUPPRESSION REMOVALS PART PLAN
 FD101 SCALE: 1/8"=1'-0" PLAN NORTH

