



MHL BPD DCL  
 21502.10  
 DESIGNED BY:  
 DRAWN BY:  
 CHECKED BY:  
 PROJECT:

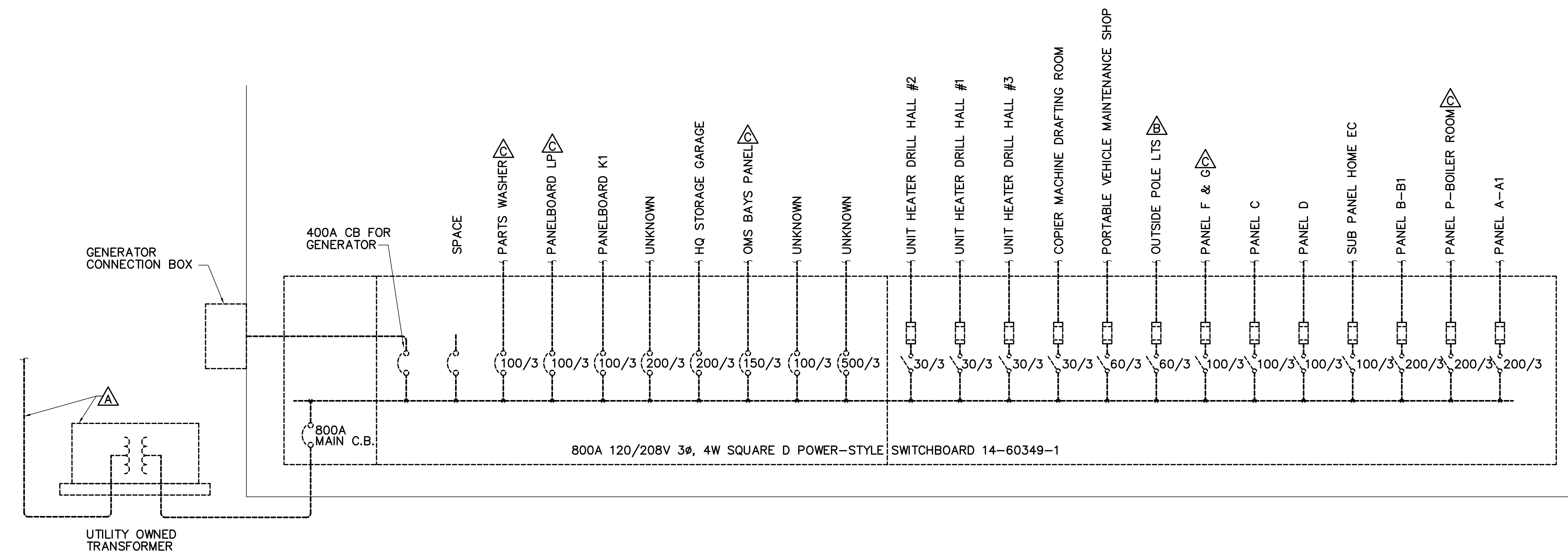
UNIVERSITY OF NEW ENGLAND  
 PORTLAND CAMPUS  
 STEVEN AVENUE ARMORY  
 716 STEVENS AVE  
 PORTLAND, MAINE 04103  
 T (207) 285-0171

RENOVATIONS TO THE  
 STEVENS AVENUE ARMORY

ONE-LINE  
 DIAGRAMS

- DRAWING REMOVALS KEYNOTES**
- COORDINATE WITH UTILITY FOR REMOVALS OF PRIMARY CONDUCTORS, CONDUIT AND TRANSFORMER.
  - FIELD VERIFY LOCATION OF EXTERIOR POLE LIGHT CIRCUIT. CIRCUIT SHALL BE REFEED FROM NATIONAL GUARD DISTRIBUTION PANELBOARD.
  - REMOVE EXISTING FEEDER. EXISTING EQUIPMENT IN NATIONAL GAURD AREA SHALL REMAIN.

- DRAWING INSTALLATION KEYNOTES**
- COORDINATE WITH UTILITY FOR INSTALLATION OF TRANSFORMER, PAD, CONDUIT AND PRIMARY CONDUCTORS.
  - PROVIDE SHUNT TRIP CIRCUIT BREAKER FOR ELEVATOR.
  - EXISTING (TO REMAIN) EQUIPMENT IN NATIONAL GUARD AREA.
  - UTILITY METER. INSTALL ON PEDESTAL. SEE DETAIL 9/C-501.
  - PROVIDE GROUND FAULT PROTECTION.
  - PROVIDE KEY INTERLOCK SYSTEM.



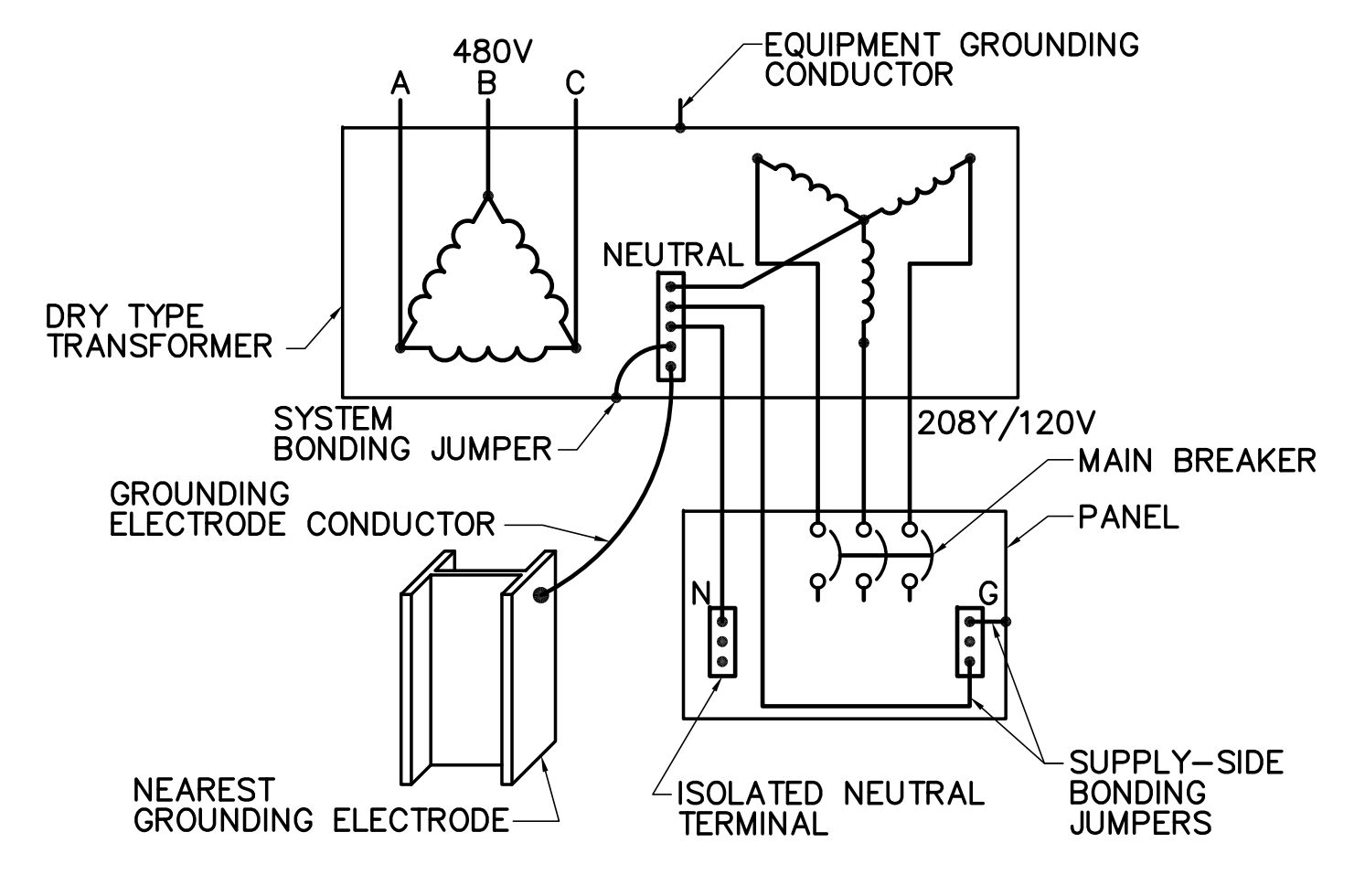
**1 REMOVALS ONE-LINE DIAGRAM**  
 EP501/NOT TO SCALE

**WIRING SCHEDULE**

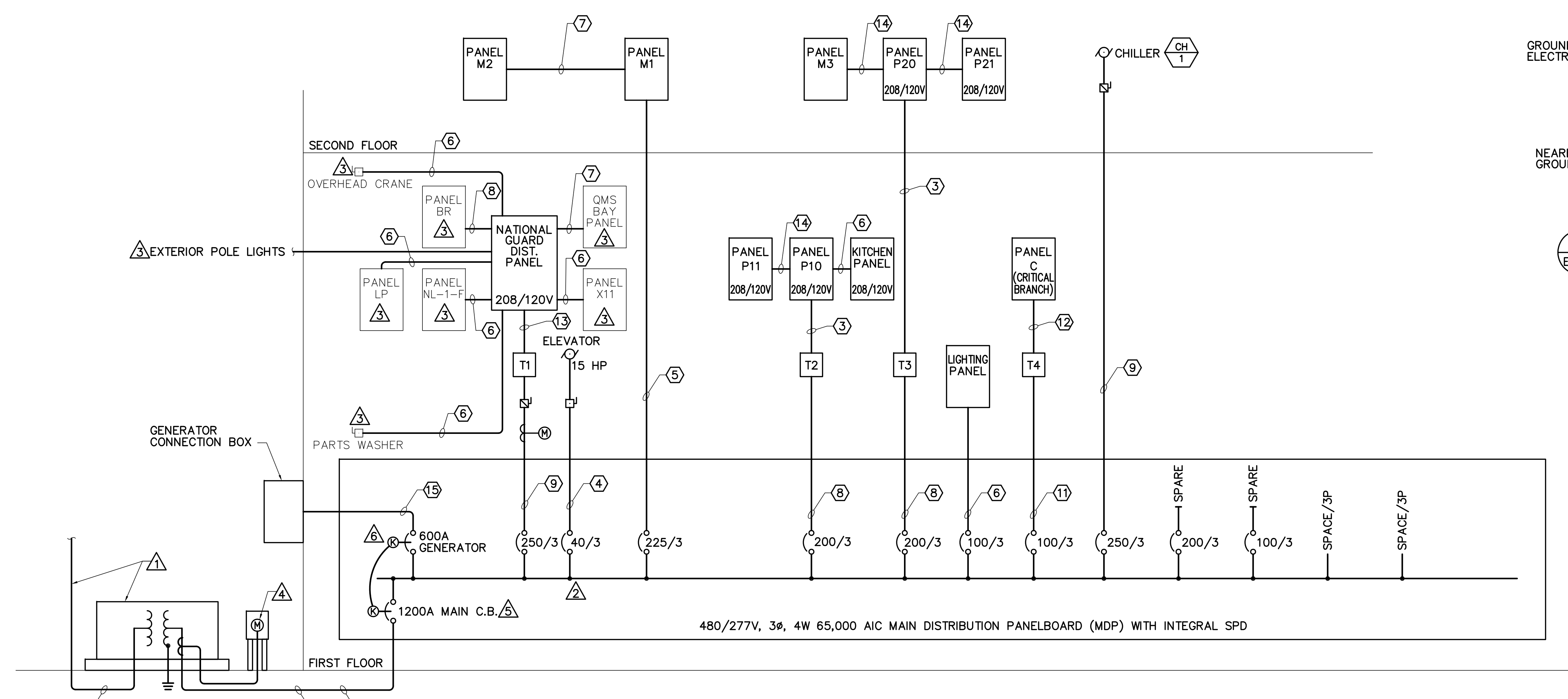
TAG #	# OF SETS	CABLE	CONDUIT
①	4	4 #350KCMIL	4"
②	1	2 # 10, #10G	1/2"
③	2	4 #3/0 + #2G	2"
④	1	3 #8 + #10G	1"
⑤	1	4 #4/0 + #6G	2-1/2"
⑥	1	4 #2 + #8G	1-1/2"
⑦	1	4 #1/0 + #6G	1-1/2"
⑧	1	3 #3/0 + #6G	2"
⑨	1	3 #250 + #4G	2"
⑩	1	3 #500 + #3G	3"
⑪	1	3 #1 + #8G	1-1/2"
⑫	1	4 #1/0 + #4G	2"
⑬	2	4 #250 + #1/0G	2-1/2"
⑭	1	4 #3/0 + #6G	2"
⑮	2	4 #3/0 + #2/0G	3"

**TRANSFORMER SCHEDULE**

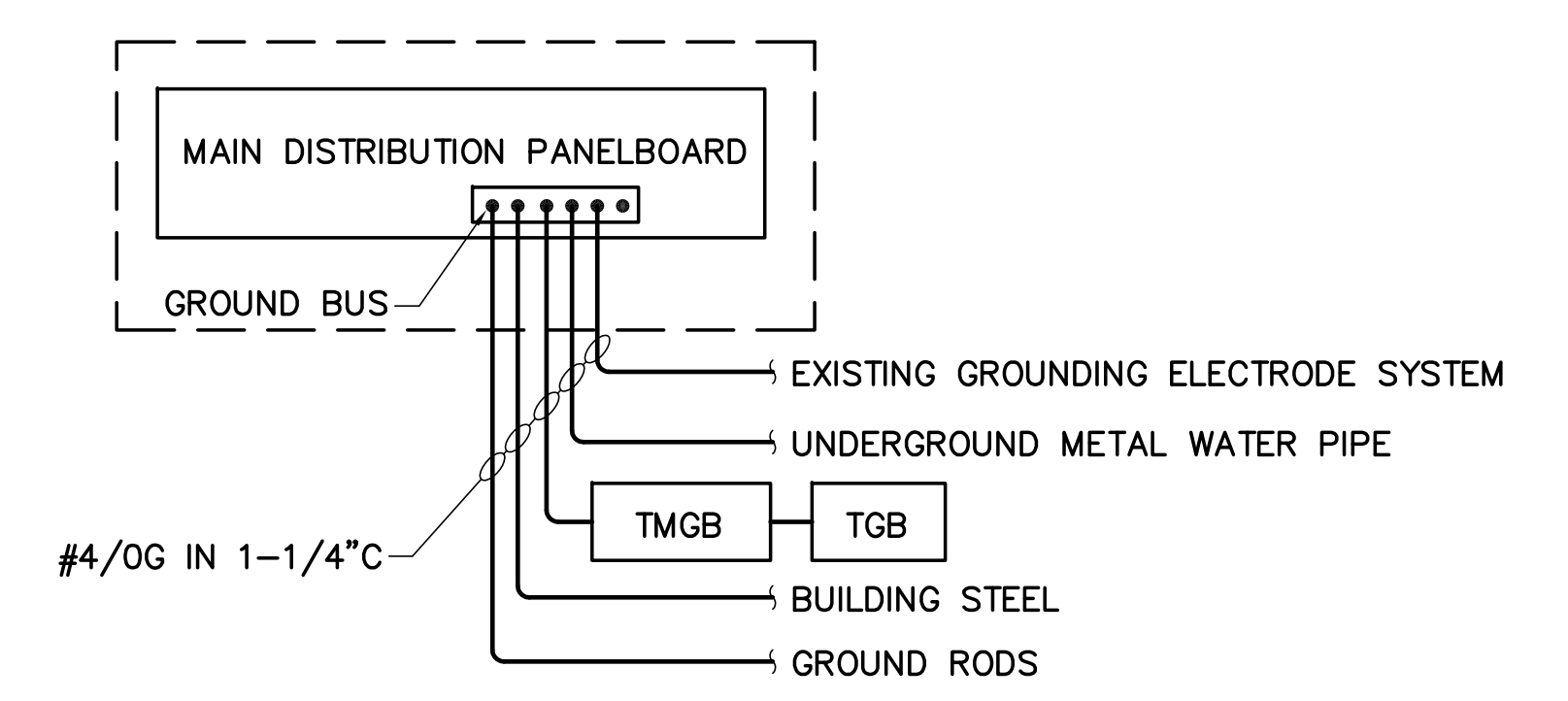
TAG	KVA	VOLTS
T1	150	480Δ - 208Y/120
T2	112.5	480Δ - 208Y/120
T3	112.5	480Δ - 208Y/120
T4	45	480Δ - 208Y/120



**3 TRANSFORMER GROUNDING DETAIL**  
 EP501/NOT TO SCALE



**2 ONE-LINE DIAGRAM**  
 EP501/NOT TO SCALE



**4 GROUNDING ELECTRODE SYSTEM DETAIL**  
 EP501/NOT TO SCALE