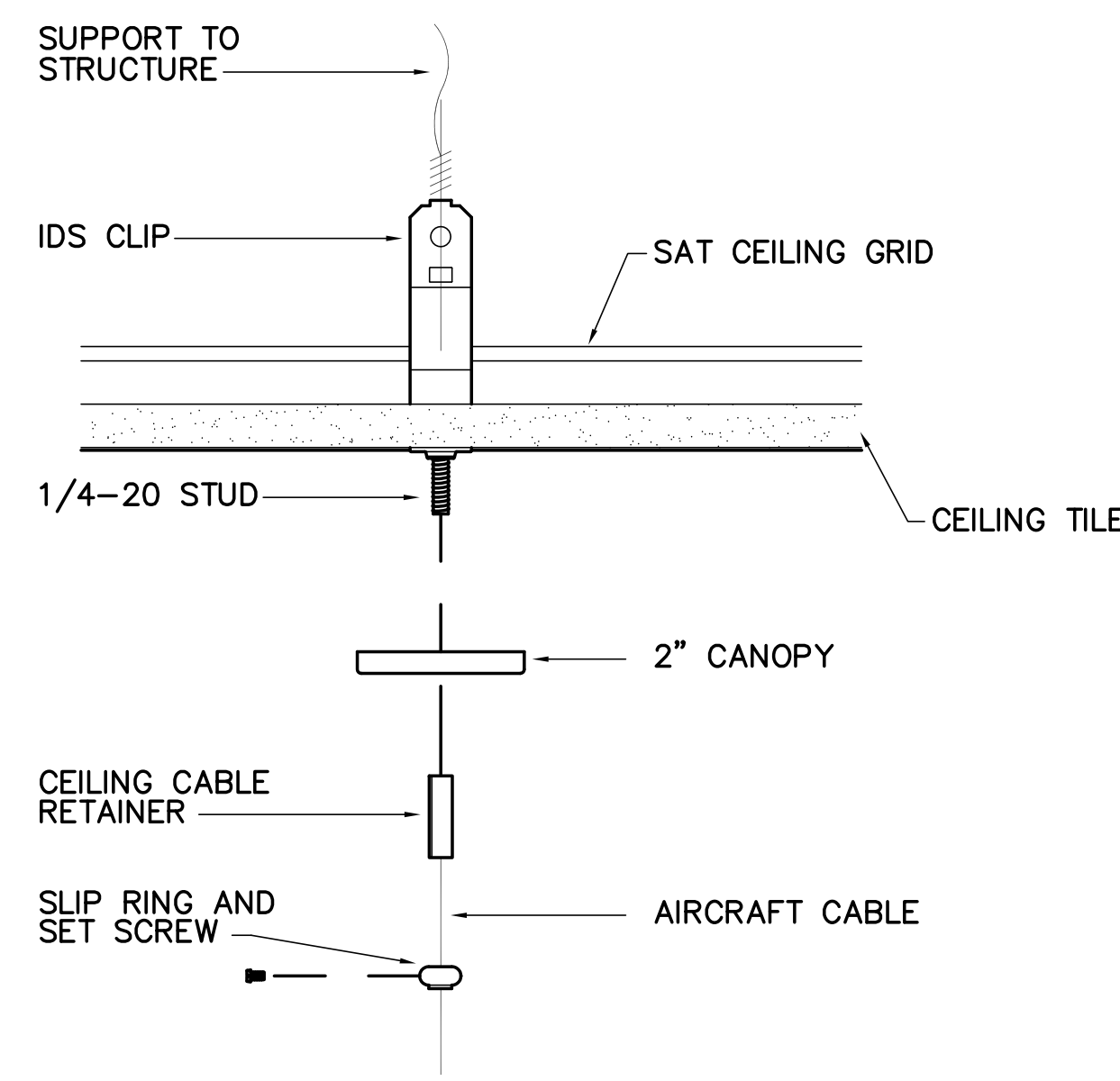


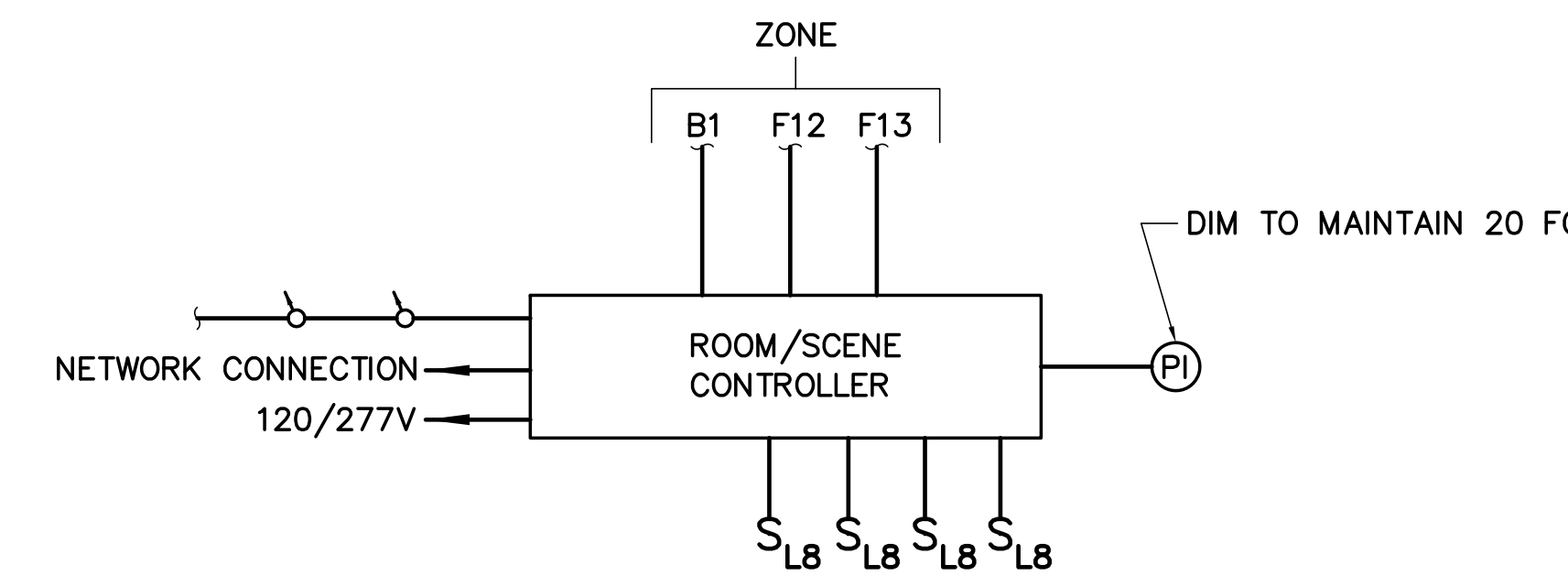
LIGHTING FIXTURE SCHEDULE								
TYPE	DESCRIPTION	SOURCE	LUMENS	VOLTS	W/VA	MOUNTING	NOTES	CATALOG NUMBER
A4	DIRECT/INDIRECT PENDANT MOUNT	LED	4622	277	39	AIRCRAFT CABLE	1,3	FINELITE SI2LED-ID-DC04'-3E-B-V-35K-SC-277-FA-FE
A20	DIRECT/INDIRECT PENDANT MOUNT	LED	18488	277	155	AIRCRAFT CABLE	1,3	FINELITE SI2LED-ID-DC020'-3E-B-V-35K-SC-277-FA-FE
B1	ROUND DECORATIVE PENDANT 52"D	LED	10840	277	141	PENDANT	1,2,4	G-LIGHTING GL-2652-J-1-D
B2	ROUND DECORATIVE PENDANT 37-1/2"D	LED	6374	277	85	PENDANT	1,2,4	G-LIGHTING GL-2651-B-1
C2	LINEAR DIRECT LED-2"W	LED	329L/FT	277	3.6W/FT	WALL MOUNT	1,7	FINELITE HP-2-WMD-S-9-35-F-277-SC-MB-(EM)
C3	2' DIAMETER RECESSED	LED	3000	277	43	RECESSED	1	FOCAL POINT FSDL22-FLXP-3000L-35K-1C-277-U-WH-(EM)
C4	LINEAR DIRECT LED-4"W	LED	381L/FT	277	3.6W/FT	RECESSED	1,7	FINELITE HP-4R-S-9-35-F-277-SC
F1	RECESSED 2X2 DIRECT/INDIRECT	LED	2650-3050	277	25	RECESSED	1,5,6	COLUMBIA LCAT22-35LW-EU-(ELL14)
F2	RECESSED 2X4 DIRECT/INDIRECT	LED	6800-7800	277	65	RECESSED	1,5,6	COLUMBIA LCAT24-35VL-EDU-(ELL14)
F3	RECESSED 2X2 DIRECT/INDIRECT	LED	3550-4050	277	35	RECESSED	1,5,6	COLUMBIA LCAT22-35HL-EDU-(ELL14)
F4	RECESSED 2X4 DIRECT/INDIRECT	LED	4400-5150	277	40	RECESSED	1,5,6	COLUMBIA LCAT24-35ML-EDU-(ELL14)
F5	RECESSED 2X2 DIRECT/INDIRECT	LED	3200-3400	277	30	RECESSED	1,5,6	COLUMBIA LCAT22-35ML-EDU-(ELL14)
F6	STRIP LIGHT	LED	2700	277	25	SURFACE	1	COLUMBIA LR04-35LW-EU-(ELL14)
F7	WALL MOUNT	LED	2079	277	18.4	WALL MOUNT	1	FINELITE SI7-LED-ACF-PF-4'-H-9-35-277-SC
F8	RECESSED 2X4 DIRECT/INDIRECT	LED	4100-4700	277	35	RECESSED	1	COLUMBIA LCAT24-35LW-EU-(ELL14)
F9	STRIP LIGHT	LED	5000	277	53	SURFACE	1	COLUMBIA LR04-35ML-EU-(EL114)
F10	6" ROUND PENDANT	LED	1000	277	15.5	PENDANT	1,4	PRESCOLITE LCC6LEDP10L-30K-8-WFL45-BA
F11	6" ROUND PENDANT	LED	1800	277	24.9	PENDANT	1,4,10	PRESCOLITE LCC6LEDP18L-30K-8-WFL45-BA
F12	10" ROUND CYLINDER	LED	3000	277	34	PENDANT	10	PRESCOLITE MC10LED-S-3L-35K-9-SS-26-BA
F13	LED WALL WASH - LINEAR	LED	234/FT	277	2.5W/FT	RECESSED	1	FINELITE HP-4-WW-R-FO-8-B-9-35-277-SC
F14	6" ROUND DOWNLIGHT	LED	1100	277	14	RECESSED	1,9	PRESCOLITE LF6LEDG4-EM-6FLED5G4-35K-EM
F15	2" LINEAR LED STRIP	LED	250L/FT	277	3.5W/FT	RECESSED	1,7	FOCAL POINT FSM2L-FL-250LF-35K-277-WH
F16	RECTANGULAR PENDANT	LED	19368	277	175	PENDANT	1,7	FINELITE HP-4-ID-4'X8'-S-S-35K-TG-BG-277-FA-SC
F17	VAPORTITE WALL MOUNT	LED	757	277	28	WALL	-	HUBBELL VWGL-1
W1	WALL MOUNT EXTERIOR	LED	2720	277	32	WALL	9	BETA CALCO 32-5165-MS
W2	EMERGENCY LIGHT	LED	405	277	15.7	WALL	8	DUAL LITE PG-P-HTR
EXIT	EXIT SIGNS	LED	-	277	3.3	RECESSED/SURFACE	1	DUAL LITE LE/S-C/W-S/D-R-N-E

### FIXTURE SCHEDULE NOTES

- COORDINATE MOUNTING TYPE (GRID (SAT), FLANGE (GYPSUM), OR SURFACE /SUSPENDED (NO CEILING) WITH CEILING/WALL/FLOOR TYPE.
- VERIFY MOUNTING WITH ARCHITECT BEFORE INSTALLATION OF WIRE AND JUNCTION BOXES.
- VERIFY ACTUAL LENGTH OF CONTINUOUS ROWS AS SHOWN ON LIGHTING PLANS.
- FINAL COLOR SELECTION SHALL BE MADE BY ARCHITECT FROM MANUFACTURER'S FULL RANGE OF STANDARD COLOR SELECTION THROUGH SHOP DRAWING SUBMITTALS.
- SIZE MAINTENANCE FREE BATTERY TO OPERATE THE LAMPS TO BE CONNECTED FOR 1-1/2 HOURS.
- PROVIDE EMERGENCY BALLAST IN FIXTURES INDICATED ON PLANS, RATED AT 1400 LUMENS FOR ONE 1400 LUMENS LAMP.
- VERIFY LENGTH OF LINEAR FIXTURE PRIOR TO ORDERING.
- FIXTURE IS EMERGENCY ONLY AND SHALL ILLUMINATE UPON LOSS OF NORMAL POWER.
- EXTERIOR FIXTURES SHALL BE CONNECTED TO EXTERIOR PHOTOCELL AND PROGRAMMABLE TIMECLOCK. FIXTURES SHALL ILLUMINATE AT 3 FC.
- PROVIDE EXTERNALLY MOUNTED EMERGENCY UNIT ABOVE CEILING PANELS.

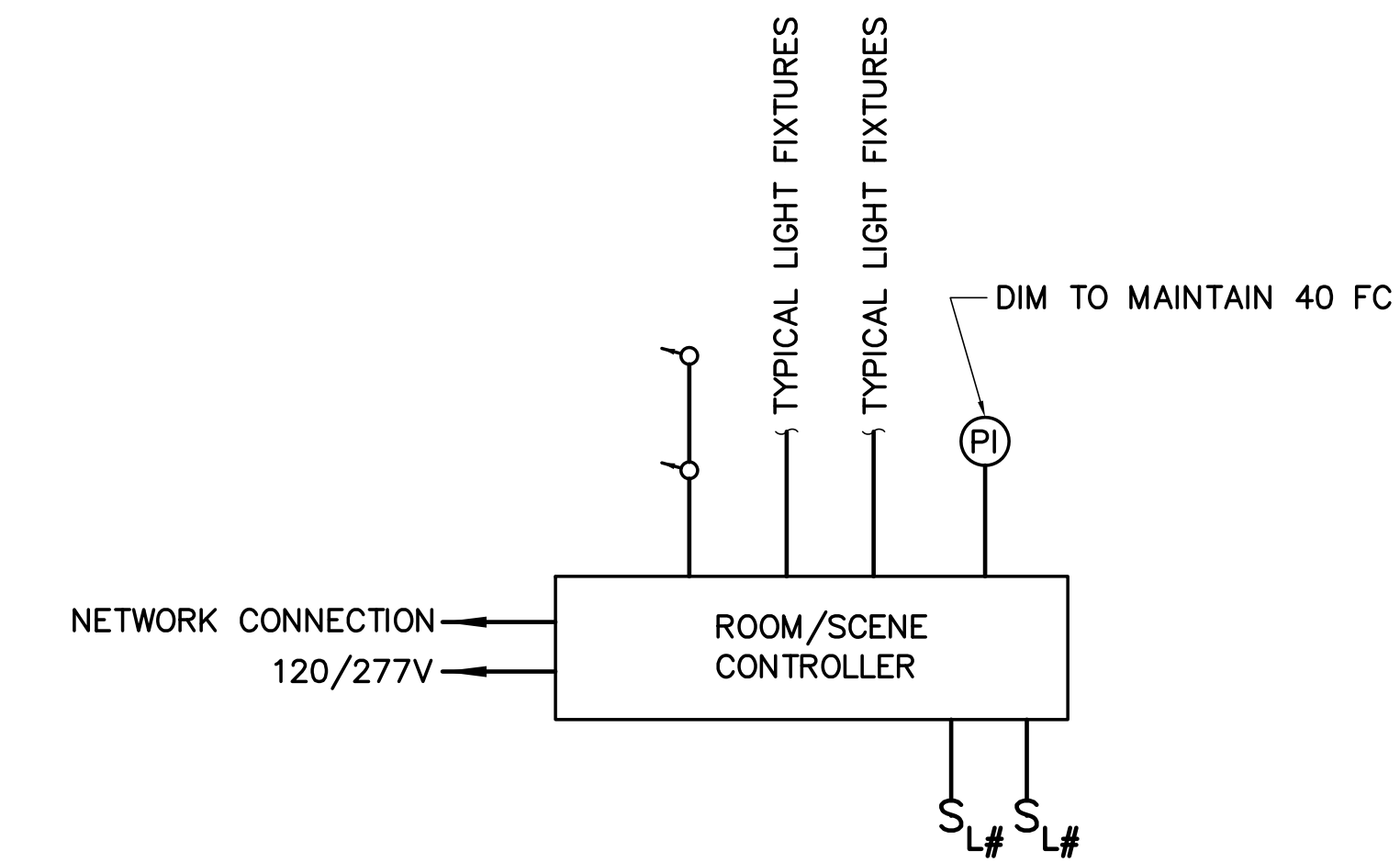


**1 TYPICAL PENDANT FIXTURE MOUNTING DETAIL**  
EL701 NOT TO SCALE



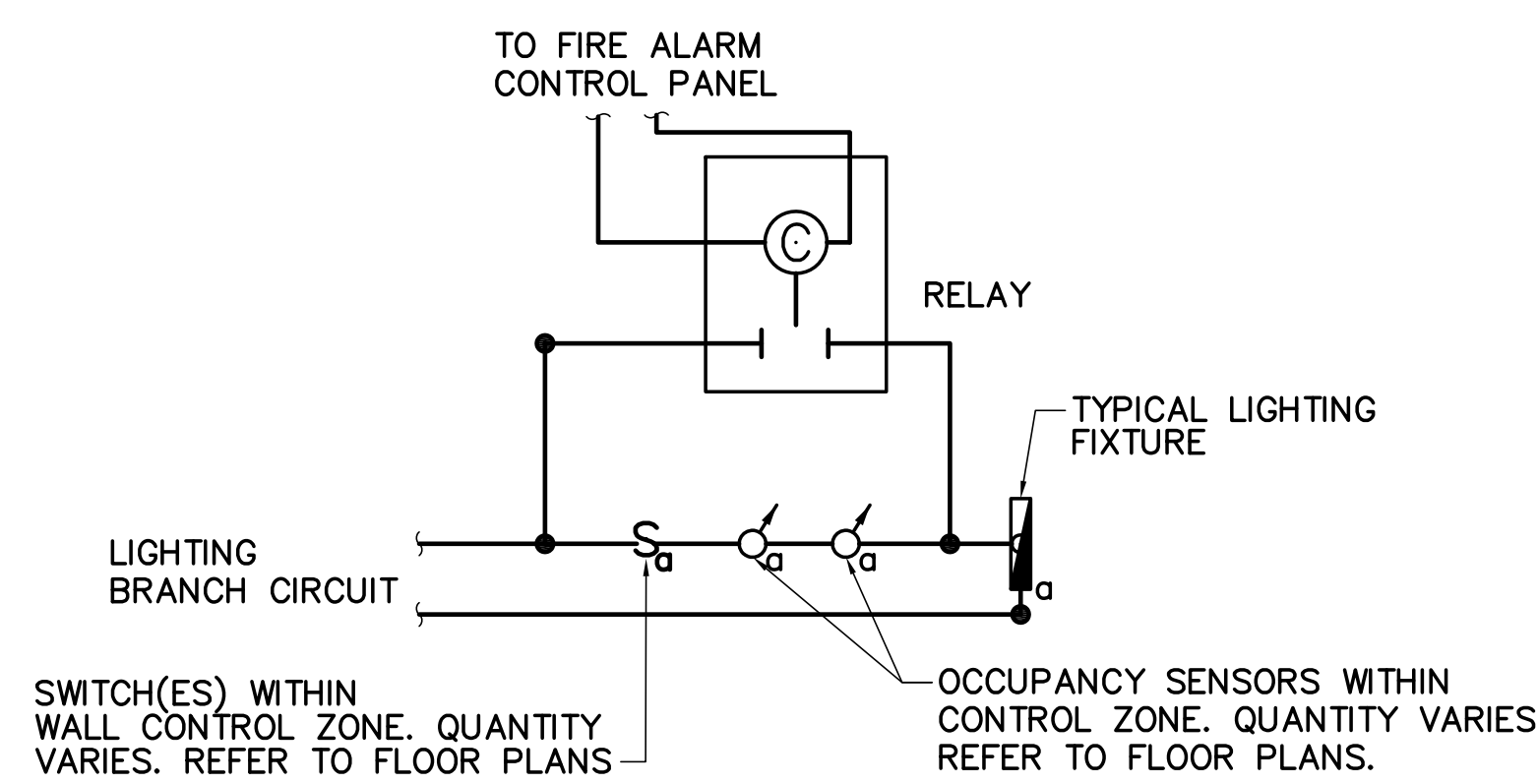
**3 FUNCTION ROOM 104 LIGHTING CONTROL DETAIL**  
EL701 NOT TO SCALE

- NOTES:
- BASIS OF DESIGN: WIRING, COMPONENTS AND INSTALLATION REQUIREMENTS WILL VARY DEPENDING ON MANUFACTURER.
  - INSTALLATION OF PHOTOCELLS, OCCUPANCY SENSORS, WIRING, ECT. SHALL BE PER MANUFACTURERS RECOMMENDATIONS.
  - CONTROL WIRING SHALL BE YELLOW AND PER MANUFACTURERS RECOMMENDATION.
  - OCCUPANCY SENSORS PROVIDE AUTO ON/OFF (FIELD SELECTABLE FOR MANUAL ON/AUTO OFF) WITH 20 MIN TIME DELAY DURING AFTER HOUR SERVICE.
  - LOSS OF POWER SHALL TURN ALL RELAYS ON.
  - DIAGRAM INDICATES CONTROL DEVICES AND WIRING ONLY. REFER TO EL101, EL102, AND EL103 FOR BRANCH CIRCUITS.
  - PROVIDE ADDITIONAL DEVICES FOR FULL COVERAGE OF SPACE AS DIAGRAMS INDICATE DESIGN INTENT.
  - EACH SWITCH STATION SHALL BE ABLE TO TURN ON/OFF EACH LIGHTING ZONE, RAISE/LOWER EACH LIGHTING ZONE AND AUTOMATICALLY CONTROL THE LIGHTING ZONES FOR DAYLIGHT HARVESTING. THE NUMBER OF PUSHBUTTONS NEEDED WILL VARY FOR DIFFERENT MANUFACTURERS. SWITCH STATIONS SHALL HAVE ENGRAVED, LABELED DIRECTORIES ASSIGNED TO PUSHBUTTONS INDICATING CONTROL ZONES (FOR EXAMPLE: "PENDANTS", "WEST WALL" OR "SECOND FLOOR MEZZANINE").



**5 TYPICAL CLASSROOM/CONFERENCE RM LIGHTING CONTROL**  
EL701 NOT TO SCALE

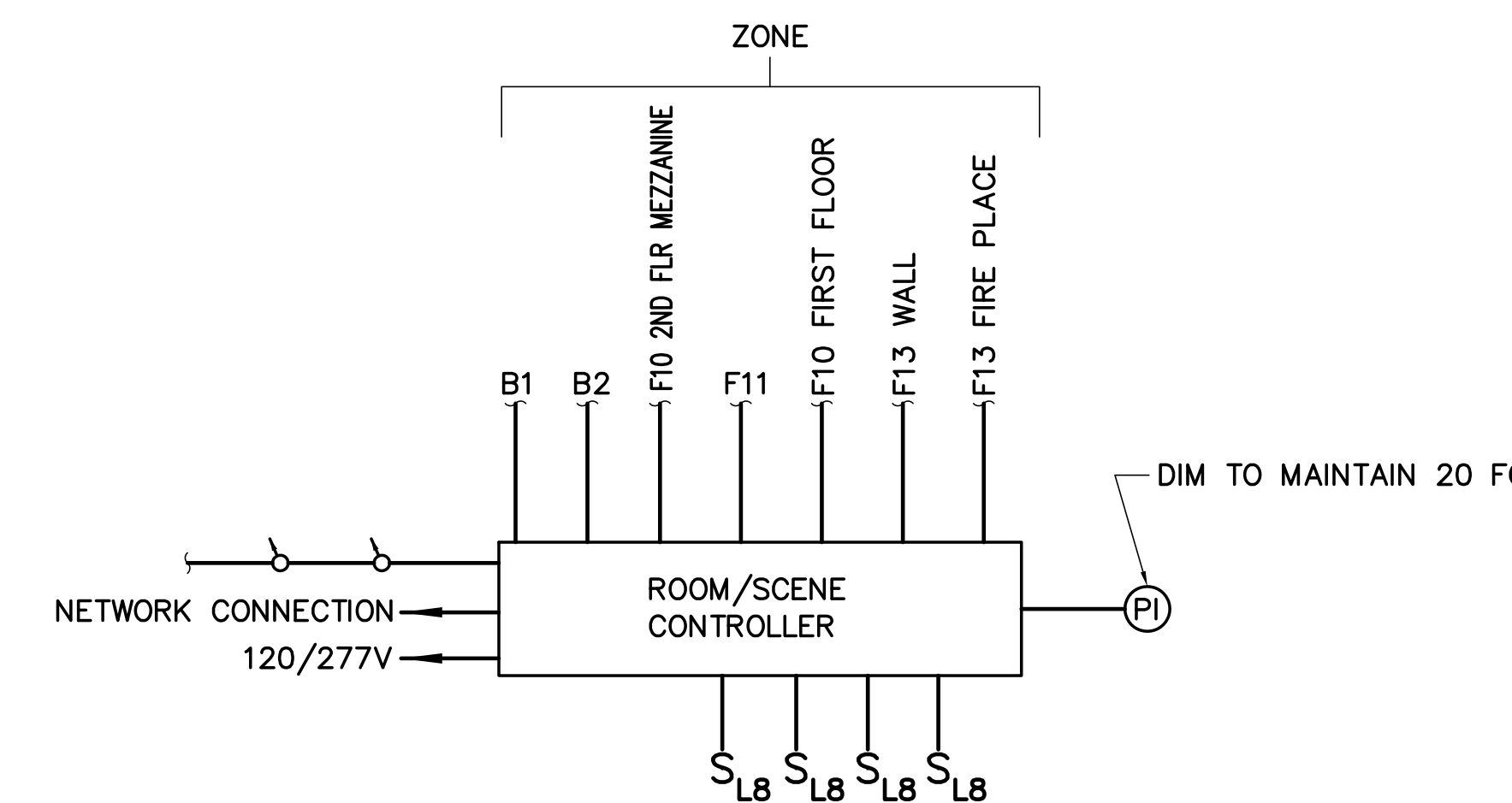
- NOTES:
- BASIS OF DESIGN: WIRING, COMPONENTS AND INSTALLATION REQUIREMENTS WILL VARY DEPENDING ON MANUFACTURER.
  - INSTALLATION OF PHOTOCELLS, OCCUPANCY SENSORS, WIRING, ECT. SHALL BE PER MANUFACTURERS RECOMMENDATIONS.
  - CONTROL WIRING SHALL BE YELLOW AND PER MANUFACTURERS RECOMMENDATION.
  - OCCUPANCY SENSORS PROVIDE AUTO ON/OFF (FIELD SELECTABLE FOR MANUAL ON/AUTO OFF) WITH 20 MIN TIME DELAY DURING AFTER HOUR SERVICE.
  - LOSS OF POWER SHALL TURN ALL RELAYS ON.
  - DIAGRAM INDICATES CONTROL DEVICES AND WIRING ONLY. REFER TO EL101, EL102, AND EL103 FOR BRANCH CIRCUITS.
  - PROVIDE ADDITIONAL DEVICES FOR FULL COVERAGE OF SPACE AS DIAGRAMS INDICATE DESIGN INTENT.
  - EACH SWITCH STATION SHALL BE ABLE TO TURN ON/OFF EACH LIGHTING ZONE, RAISE/LOWER EACH LIGHTING ZONE AND AUTOMATICALLY CONTROL THE LIGHTING ZONES FOR DAYLIGHT HARVESTING. THE NUMBER OF PUSHBUTTONS NEEDED WILL VARY FOR DIFFERENT MANUFACTURERS. SWITCH STATIONS SHALL HAVE ENGRAVED, LABELED DIRECTORIES ASSIGNED TO PUSHBUTTONS INDICATING CONTROL ZONES (FOR EXAMPLE: "PENDANTS", "WEST WALL" OR "SECOND FLOOR MEZZANINE").



**2 LIGHTING BYPASS CONTROL DIAGRAM**  
EL701 NOT TO SCALE

#### LIGHTING BYPASS CONTROL NOTES:

- PROVIDE 24VDC RELAY WITH MINIMUM 20 AMP, 120V RATED NORMALLY OPEN AND NORMALLY CLOSED CONTACTS. CONTACT SHALL CLOSE WHEN FIRE ALARM IS IN ALARM IN ORDER TO BYPASS THE OCCUPANCY SENSORS. WITHIN THE STAIRS, RELAY SHALL BE UL LISTED FOR EMERGENCY LIGHTING CONTROL USE.
- PROVIDE 24VDC POWER FROM THE FIRE ALARM CONTROL PANEL.
- COORDINATE WORK WITH FIRE ALARM INSTALLER.



**4 PRE FUNCTION RM 116 LIGHTING CONTROL DETAIL**  
EL701 NOT TO SCALE

- NOTES:
- BASIS OF DESIGN: WIRING, COMPONENTS AND INSTALLATION REQUIREMENTS WILL VARY DEPENDING ON MANUFACTURER.
  - INSTALLATION OF PHOTOCELLS, OCCUPANCY SENSORS, WIRING, ECT. SHALL BE PER MANUFACTURERS RECOMMENDATIONS.
  - CONTROL WIRING SHALL BE YELLOW AND PER MANUFACTURERS RECOMMENDATION.
  - OCCUPANCY SENSORS PROVIDE AUTO ON/OFF (FIELD SELECTABLE FOR MANUAL ON/AUTO OFF) WITH 20 MIN TIME DELAY DURING AFTER HOUR SERVICE.
  - LOSS OF POWER SHALL TURN ALL RELAYS ON.
  - DIAGRAM INDICATES CONTROL DEVICES AND WIRING ONLY. REFER TO EL101, EL102, AND EL103 FOR BRANCH CIRCUITS.
  - PROVIDE ADDITIONAL DEVICES FOR FULL COVERAGE OF SPACE AS DIAGRAMS INDICATE DESIGN INTENT.
  - EACH SWITCH STATION SHALL BE ABLE TO TURN ON/OFF EACH LIGHTING ZONE, RAISE/LOWER EACH LIGHTING ZONE AND AUTOMATICALLY CONTROL THE LIGHTING ZONES FOR DAYLIGHT HARVESTING. THE NUMBER OF PUSHBUTTONS NEEDED WILL VARY FOR DIFFERENT MANUFACTURERS. SWITCH STATIONS SHALL HAVE ENGRAVED, LABELED DIRECTORIES ASSIGNED TO PUSHBUTTONS INDICATING CONTROL ZONES (FOR EXAMPLE: "PENDANTS", "WEST WALL", OR "SECOND FLOOR MEZZANINE").