

MHL BPD DCL
 21502.10
 DESIGNED BY:
 DRAWN BY:
 CHECKED BY:
 PROJECT:

**UNIVERSITY OF NEW ENGLAND
 PORTLAND CAMPUS**
 STEVEN AVENUE ARMORY
 716 STEVENS AVE
 PORTLAND, MAINE 04103
 T (207)285-0171

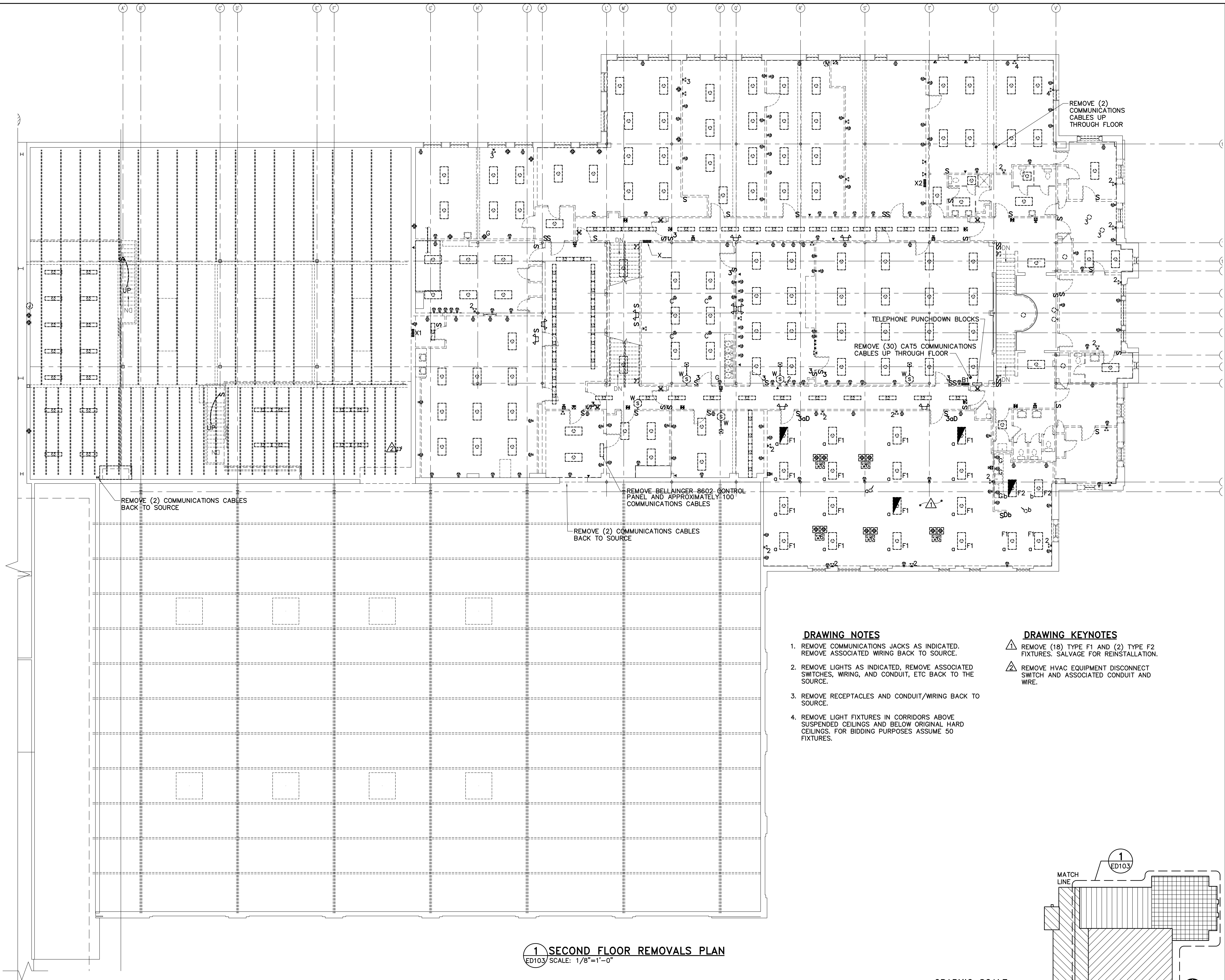
**RENOVATIONS TO THE
 STEVENS AVENUE ARMORY**

**SECOND FLOOR
 ELECTRICAL
 REMOVALS
 PLAN**

SCALE: AS NOTED
 DATE: 05-24-16

DWG. **ED103**

SHEET: 149 OF 169



DRAWING NOTES

1. REMOVE COMMUNICATIONS JACKS AS INDICATED. REMOVE ASSOCIATED WIRING BACK TO SOURCE.
2. REMOVE LIGHTS AS INDICATED, REMOVE ASSOCIATED SWITCHES, WIRING, AND CONDUIT, ETC BACK TO THE SOURCE.
3. REMOVE RECEPTACLES AND CONDUIT/WIRING BACK TO SOURCE.
4. REMOVE LIGHT FIXTURES IN CORRIDORS ABOVE SUSPENDED CEILINGS AND BELOW ORIGINAL HARD CEILINGS. FOR BIDDING PURPOSES ASSUME 50 FIXTURES.

DRAWING KEYNOTES

- △ REMOVE (18) TYPE F1 AND (2) TYPE F2 FIXTURES. SALVAGE FOR REINSTALLATION.
- △ REMOVE HVAC EQUIPMENT DISCONNECT SWITCH AND ASSOCIATED CONDUIT AND WIRE.

1 SECOND FLOOR REMOVALS PLAN
 ED103 SCALE: 1/8"=1'-0"

