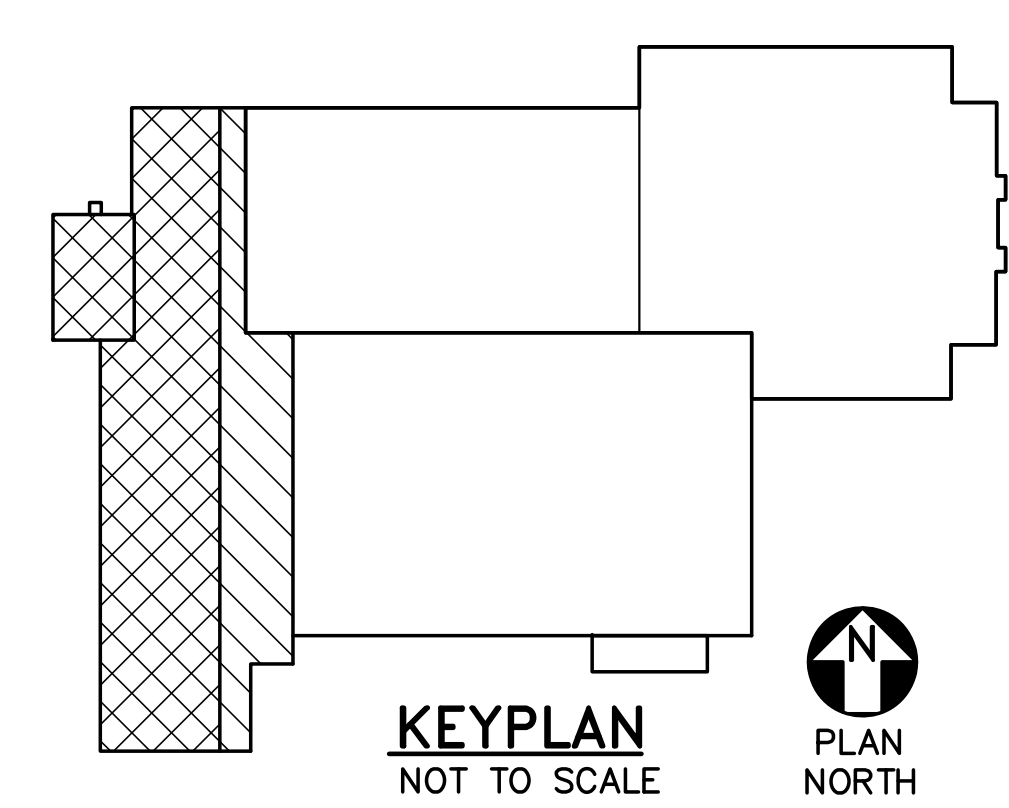


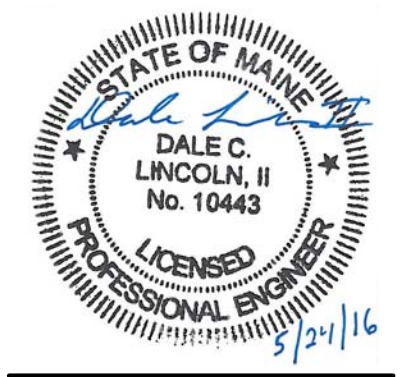
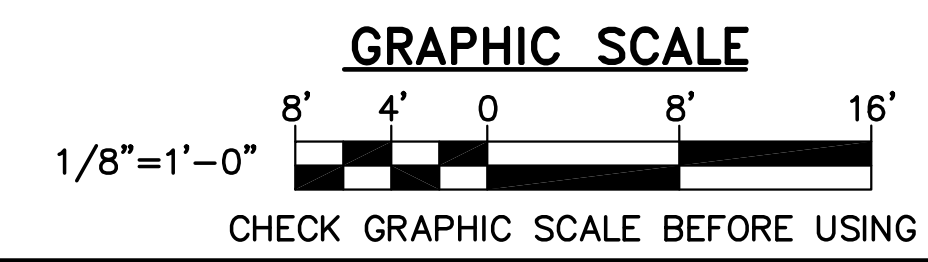
1 FIRST FLOOR ELECTRICAL REMOVALS PLAN
 ED102 SCALE: 1/8"=1'-0"

DRAWING NOTES

1. PANELBOARD AND EQUIPMENT FEEDERS RUNNING FROM NATIONAL GUARD SPACES TO NON-NATIONAL GAURD SPACES SHALL BE REMOVED. PANELBOARDS AND EQUIPMENT WITHIN THE NATIONAL GUARD SPACE ARE INTENDED TO BE REFEED FROM A DISTRIBUTION PANELBOARD WITHIN THE NATIONAL GUARD SPACE. CONDUIT AND WIRING TO REFEED PANELBOARDS AND EQUIPMENT SHALL BE INSTALLED PRIOR TO REMOVAL OF EXISTING CONDUIT AND WIRING TO LIMIT NATIONAL GUARD DOWNTIME.
2. FIRE ALARM SYSTEM WITHIN THE NATIONAL GUARD SPACE SHALL REMAIN OPERATIONAL DURING CONSTRUCTION. EXISTING DEVICES SHALL BE TIED INTO THE PROPOSED FIRE ALARM SYSTEM.
3. IT IS INTENDED THAT CONDUIT AND WIRING, INCLUDING POWER, LIGHTING, COMMUNICATIONS OR FIRE ALARM, IN THE NATIONAL GUARD SPACE TRAVELING OUT TO THE RENOVATED PORTION OF THE BUILDING SHALL BE REMOVED AND THE EQUIPMENT BE REFEED.



KEYPLAN
 NOT TO SCALE
 PLAN NORTH



MHL
 RSW
 DCL
 21502.10
 DESIGNED BY:
 DRAWN BY:
 CHECKED BY:
 PROJECT:

**UNIVERSITY OF NEW ENGLAND
 PORTLAND CAMPUS**
 STEVEN AVENUE ARMORY
 716 STEVENS AVE
 PORTLAND, MAINE 04103
 T (207) 285-0171

**RENOVATIONS TO THE
 STEVENS AVENUE ARMORY**

**FIRST FLOOR
 ELECTRICAL
 REMOVALS
 PLAN**

SCALE: AS NOTED
 DATE: 05-24-16

DWG. **ED102**

SHEET: 148 OF 169