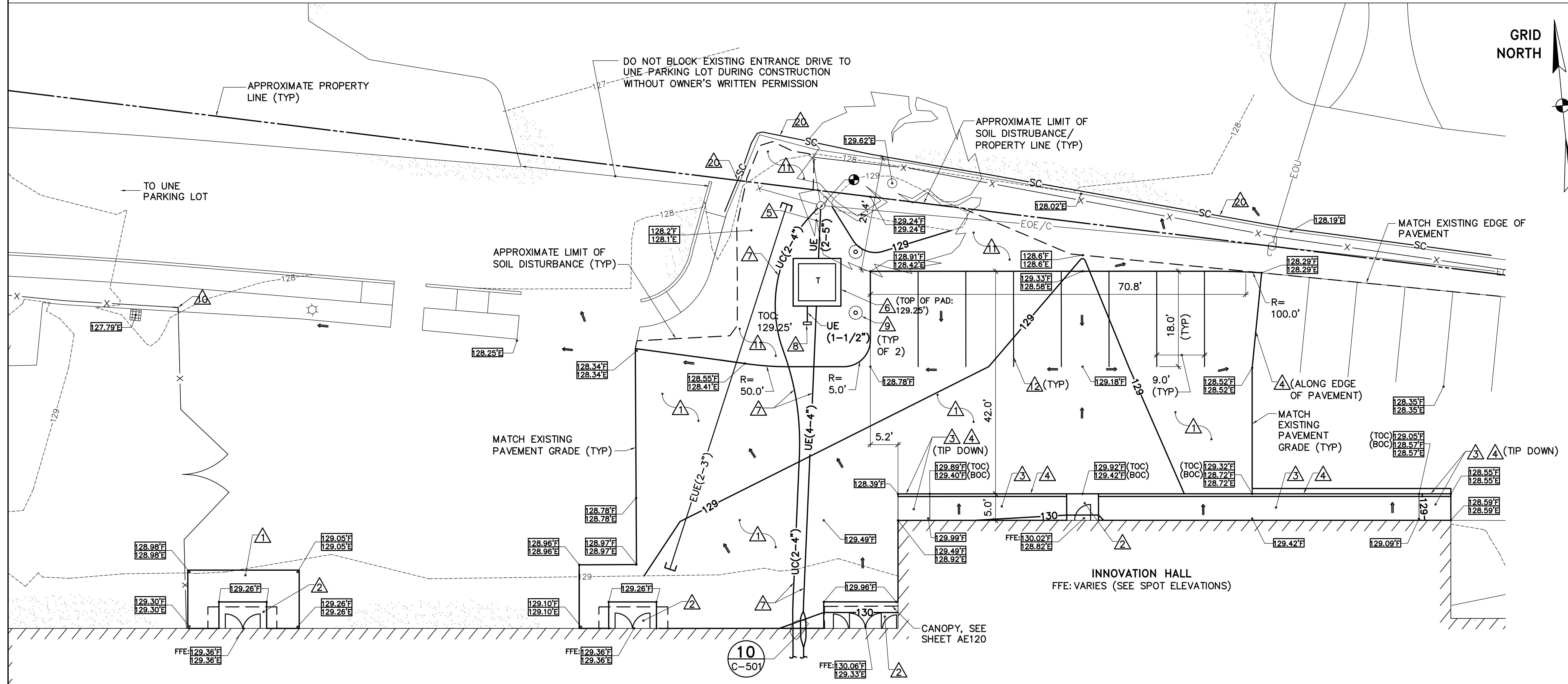


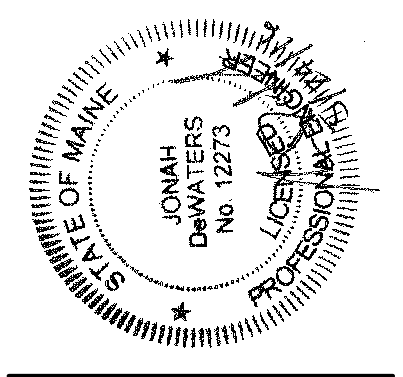
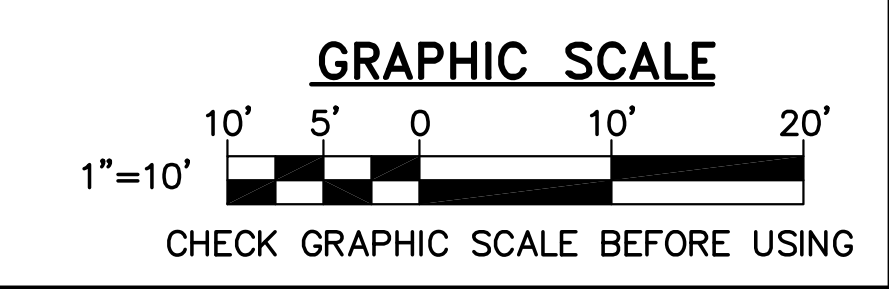
1 NORTH ENTRANCE REMOVALS PLAN
 CX101 CS101 SCALE: 1"=10'

- KEYNOTES: (REMOVALS PLAN ONLY)**
- △ EXISTING ASPHALT CONCRETE PAVEMENT.
 - △ EXISTING ASPHALT CONCRETE PAVEMENT SIDEWALK.
 - △ EXISTING TURF.
 - △ EXISTING ±4' TALL CHAIN LINK FENCE.
 - △ EXISTING ±8' TALL CHAIN LINK FENCE WITH BARBED WIRE.
 - △ EXISTING CHAIN LINK FENCE GATE.
 - △ EXISTING ASPHALT CONCRETE CURB.
 - △ EXISTING ±20" DIAMETER TREE.
 - △ NOT USED.
 - △ SAWCUT AND REMOVE EXISTING ASPHALT CONCRETE PAVEMENT, ±4" THICK.
 - △ STRIP EXISTING TOPSOIL, ±4" THICK.
 - △ REMOVE EXISTING OVERHEAD WIRE (SEE SHEETS CX101 AND ED101).
 - △ REMOVE EXISTING PRIMARY ELECTRIC SERVICE WIRE, CONDUIT, TRANSFORMER AND REINFORCED CONCRETE TRANSFORMER PAD. COORDINATE TIMING OF REMOVAL AND DISCONNECTION OF ELECTRICAL SERVICE WITH CMP AND THE OWNER. DO NOT REMOVE UNTIL NEW SERVICE IS ACTIVE.
 - △ REMOVE EXISTING UNDERGROUND CONDUIT AND SEAL WALL PENETRATIONS WATER TIGHT WITH NON-SHRINK GROUT. DO NOT REMOVE UNTIL NEW SERVICE IS ACTIVE. CAP AND ABANDON CONDUIT TO REMAIN.
 - △ REMOVE WIRING FROM EXISTING CONDUIT. CUT AND CAP ENDS OF CONDUIT TO REMAIN AND ABANDON IN PLACE.
 - △ REMOVE EXISTING CONDUIT.
 - △ REMOVE EXISTING ±6" DIAMETER METAL BOLLARD AND CONCRETE FOUNDATION.
 - △ REMOVE EXISTING ±8' HIGH CHAIN LINK FENCE WITH BARBED WIRE, POSTS AND CONCRETE POST FOUNDATIONS. PATCH HOLES IN ASPHALT CONCRETE PAVEMENT/TURF FROM POST/FOUNDATION REMOVALS.
 - △ REMOVE EXISTING CHAIN LINK FENCE SLIDE GATE, POSTS, AND CONCRETE FOUNDATIONS. PATCH HOLES IN ASPHALT CONCRETE PAVEMENT/TURF FROM POST/FOUNDATION REMOVALS.
 - △ REMOVE EXISTING CHAIN LINK FENCE PEDESTRIAN GATE, POSTS AND CONCRETE FOUNDATION. PATCH HOLES IN ASPHALT CONCRETE PAVEMENT/TURF FROM POST/FOUNDATION REMOVALS.
 - △ REMOVE EXISTING FENCE POST AND CONCRETE FOUNDATION.
 - △ NOT USED.
 - △ SEDIMENT CONTROL WATTLE. SEE DETAIL 2/C-001



2 NORTH ENTRANCE SITE PLAN
 CX101 CS101 SCALE: 1"=10'

- KEYNOTES: (SITE PLAN ONLY)**
- △ HEAVY DUTY ASPHALT CONCRETE PAVEMENT. SEE DETAIL 1/C-501 (SIM, PROVIDE 15" THICK SUBBASE LAYER AND 2-3/4" THICK BINDER COURSE)
 - △ REINFORCED CONCRETE STOOP. SEE SHEET SB101
 - △ ASPHALT CONCRETE WALK. SEE DETAIL 2/C-501
 - △ REINFORCED CONCRETE CURB. SEE DETAIL 3/C-501
 - △ UNDERGROUND ELECTRIC (PRIMARY) LINE IN CONDUIT TRENCH. SEE DETAIL 7/C-501
 - △ TRANSFORMER (BY CMP) ON REINFORCED CONCRETE TRANSFORMER PAD. SEE DETAIL 6/C-501
 - △ UNDERGROUND ELECTRIC (SECONDARY)/COMMUNICATION LINES IN CONDUIT TRENCH. SEE DETAILS 10/C-501 (FOR WALL PENETRATION) AND 5/C-501
 - △ METER PEDESTAL. SEE DETAIL 9/C-501
 - △ BOLLARD. SEE DETAIL 3/C-501
 - △ 3" DIAMETER GALVANIZED CORNER POST. SET IN 12" DIAMETER X 4' DEEP FORMED CONCRETE BASE. MODIFY AND REINSTALL EXISTING FENCE FABRIC, BARBED WIRE, AND TOP RAILS, CONNECTED TO NEW POST.
 - △ 6" TOPSOIL, SEED, FERTILIZER AND MULCH ALL DISTURBED AREAS UNLESS INDICATED OTHERWISE
 - △ PAVEMENT MARKING - 4" WIDE, WHITE
 - △ NOT USED.
 - △ SEDIMENT CONTROL WATTLE. SEE DETAIL 2/C-001



DESIGNED BY: JSD
 DRAWN BY: JSD
 CHECKED BY: JLG
 PROJECT: 21502.10

SCALE: AS NOTED
 DATE: 05-24-16