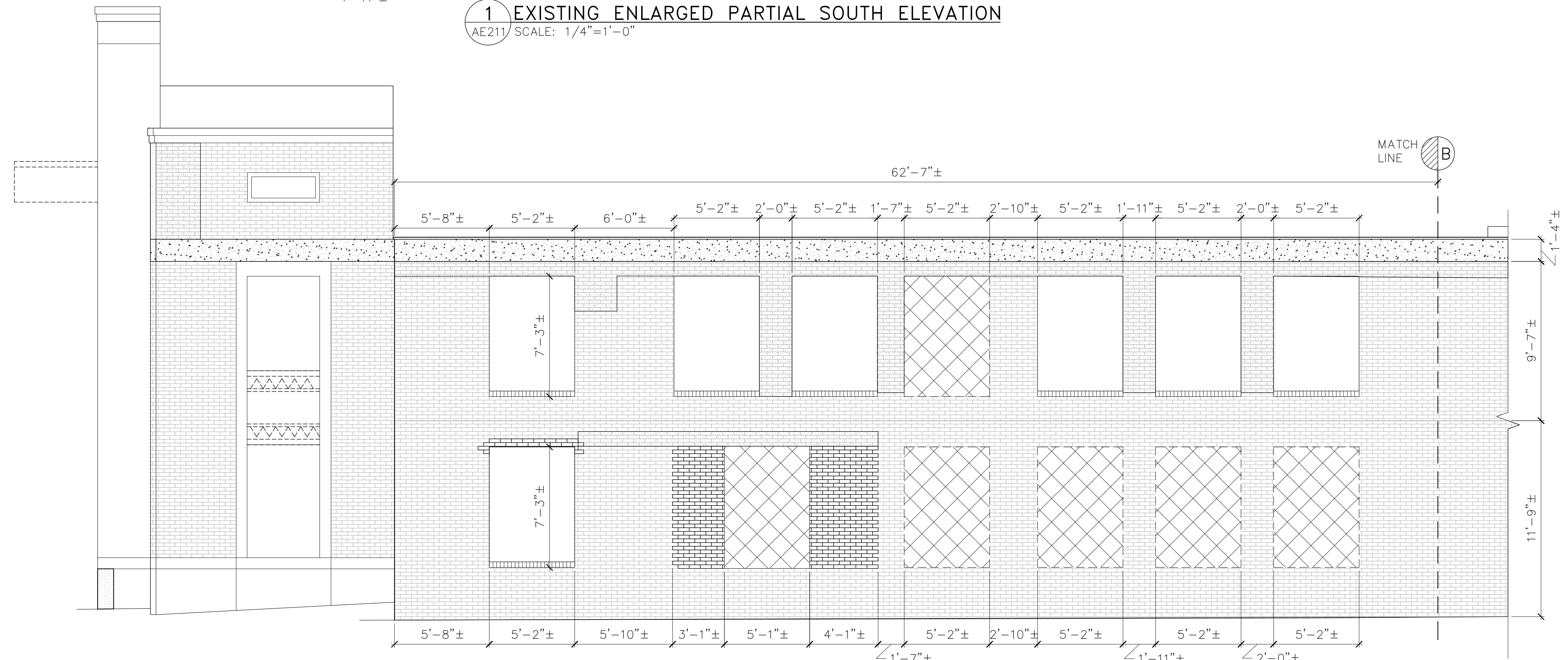
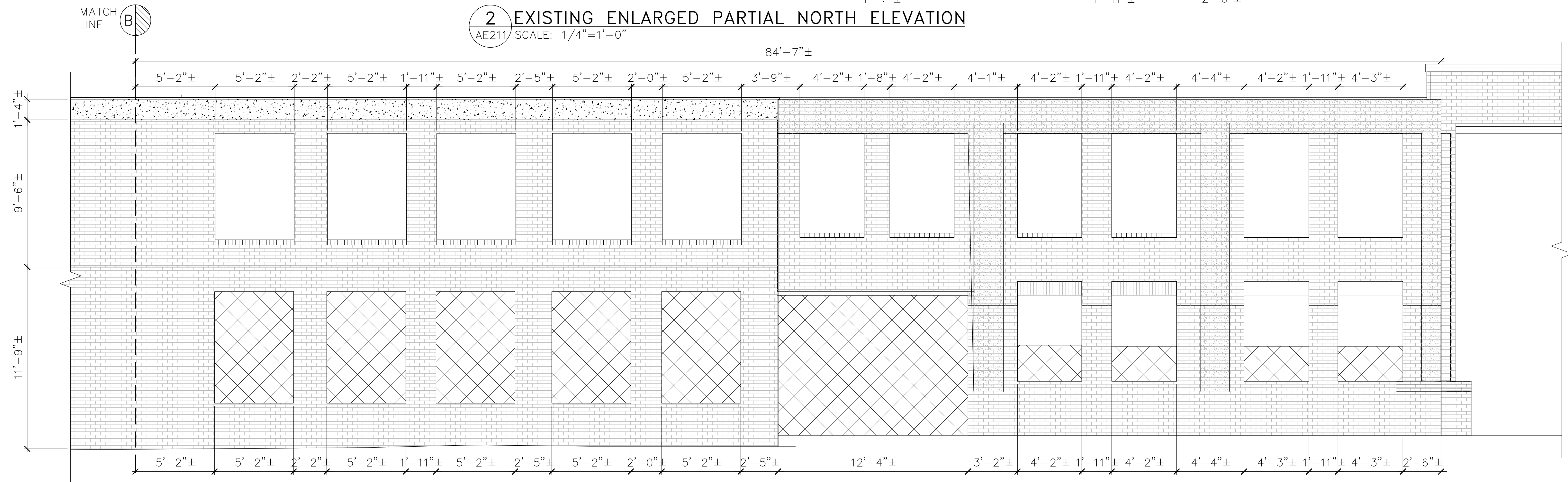


1 EXISTING ENLARGED PARTIAL SOUTH ELEVATION
 AE211/ SCALE: 1/4"=1'-0"

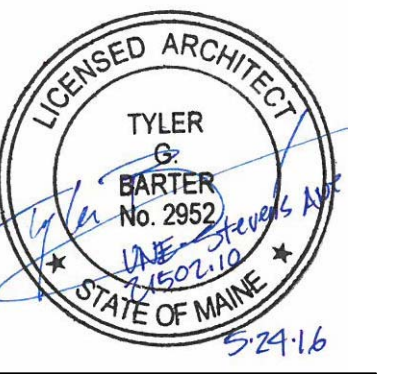
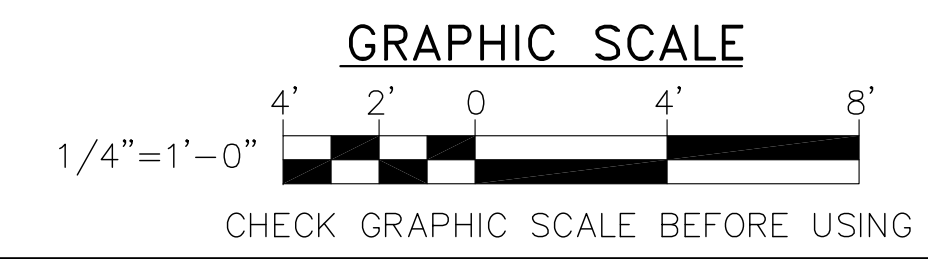
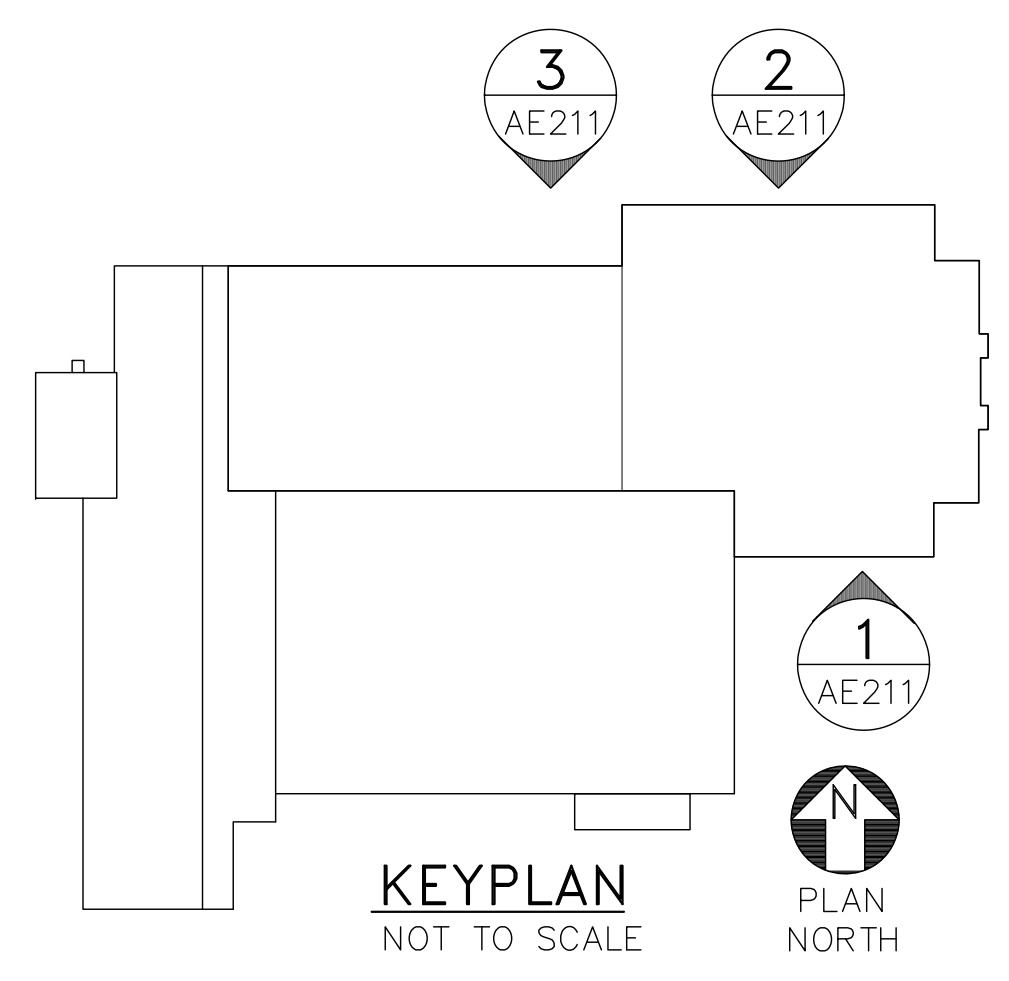


2 EXISTING ENLARGED PARTIAL NORTH ELEVATION
 AE211/ SCALE: 1/4"=1'-0"



3 EXISTING ENLARGED PARTIAL NORTH ELEVATION
 AE211/ SCALE: 1/4"=1'-0"

- LEGEND**
- INFILL MASONRY OPENING WITH BRICK : COORDINATE WORK WITH DRAWING AE201.
 - REMOVE BRICK FOR OPENING: COORDINATE WORK WITH DRAWING AD201.
 - REMOVE AND REPLACE CONCRET PRECAST
 - REPAIR/REBUILD MASONRY.



DESIGNED BY: TGB
 DRAWN BY: TGB
 CHECKED BY: TGB
 PROJECT: 21502.10

UNIVERSITY OF NEW ENGLAND
 PORTLAND CAMPUS
 STEVEN AVENUE ARMORY
 716 STEVENS AVE
 PORTLAND, ME 04103
 T (207) 883-0171

RENOVATIONS TO THE
 STEVENS AVENUE ARMORY

ENLARGED
 EXTERIOR
 ELEVATIONS

SCALE: AS NOTED
 DATE: 05-24-16

DWG. **AE211**

SHEET: **64** OF 169