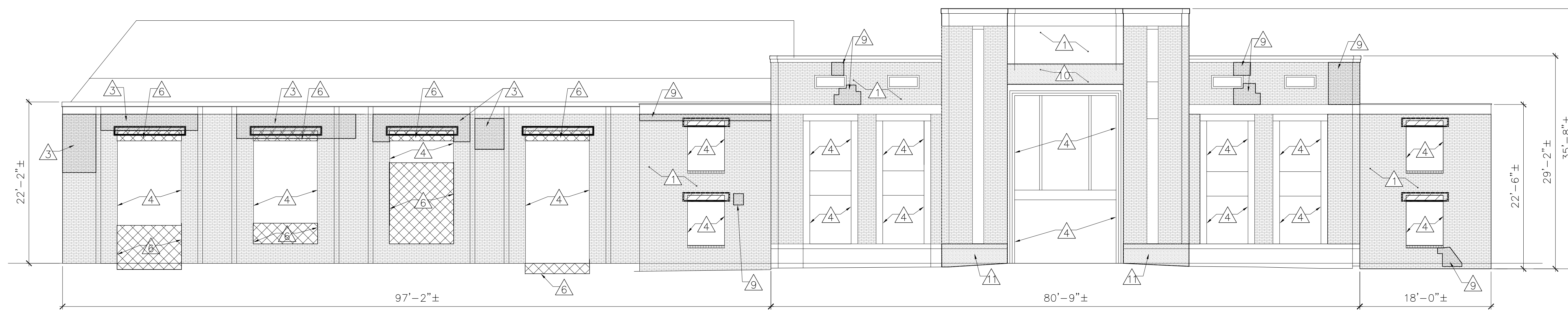


KEYNOTES (THIS SHEET ONLY)

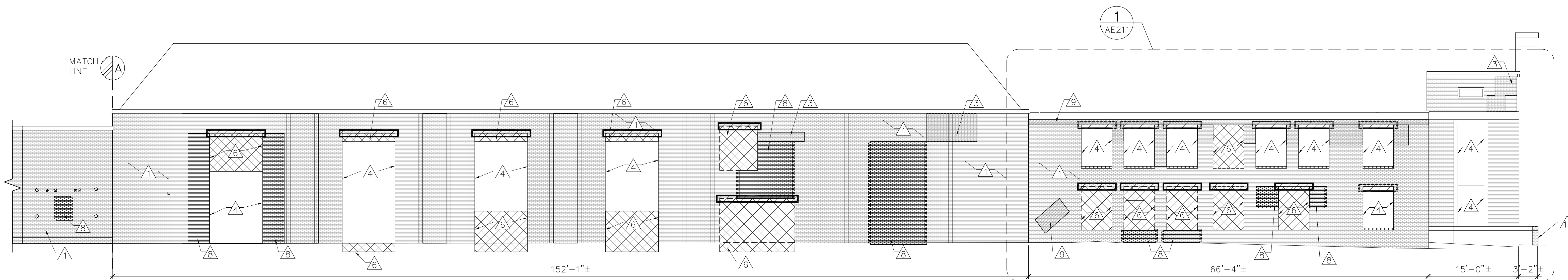
- 1 CLEAN ALL EXISTING MASONRY SURFACES.
- 2 REMOVE RUST STAINS FROM MASONRY SURFACES.
- 3 CUTOUT, REMOVE AND REPOINT ALL EXISTING MASONRY JOINTS.
- 4 EXIST MASONRY OPENING REMOVE EXISTING WINDOW AND PERIMETER SEALANT. CLEAN AND PREP OPENING FOR NEW WINDOW.
- 5 REPAIR/PATCH CRACKED AND SPALLED CONCRETE. SEE DETAIL 3/AE521.
- 6 CUTOUT, REMOVE/SALVAGE EXISTING MASONRY, PREP FOR MASONRY OPENING.
- 7 REMOVE AND REPLACE/REPAIR CORBELING.
- 8 INFILL MASONRY OPENING. TOOTH-IN BRICK TO MATCH EXISTING.
- 9 CUTOUT, REMOVE AND REPLACE EXISTING MASONRY.
- 10 CLEAN AND PREP FOR PRECAST CONCRETE INFLL PANELS.
- 11 CLEAN AND PREP FOR GRANITE INFLL PANELS. SEE DETAIL 4/SB502

LEGEND

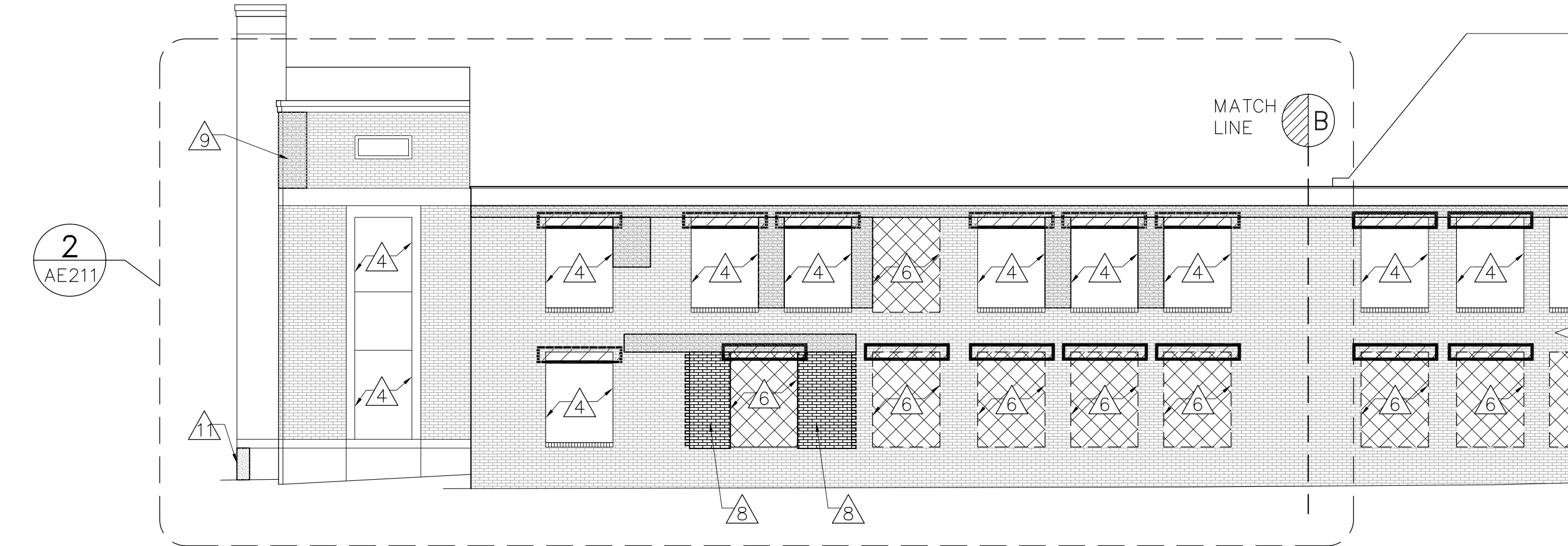
- REPLACE WINDOW LINTEL: COORDINATE WORK WITH DLINTEL SCHEDULE ON SF602.
- INFILL MASONRY OPENING WITH BRICK. SEE DETAIL 2/AE521: COORDINATE WORK WITH STRUCTURAL DRAWINGS.
- REMOVE BRICK FOR OPENING: COORDINATE WORK WITH DRAWING AD201.
- REPAIR/REBUILD MASONRY.
- REMOVE AND REPOINT MASONRY: COORDINATE WORK WITH DRAWING 1/AE521.



1 EXISTING EAST ELEVATION
AE210/ SCALE: 1/8"=1'-0"

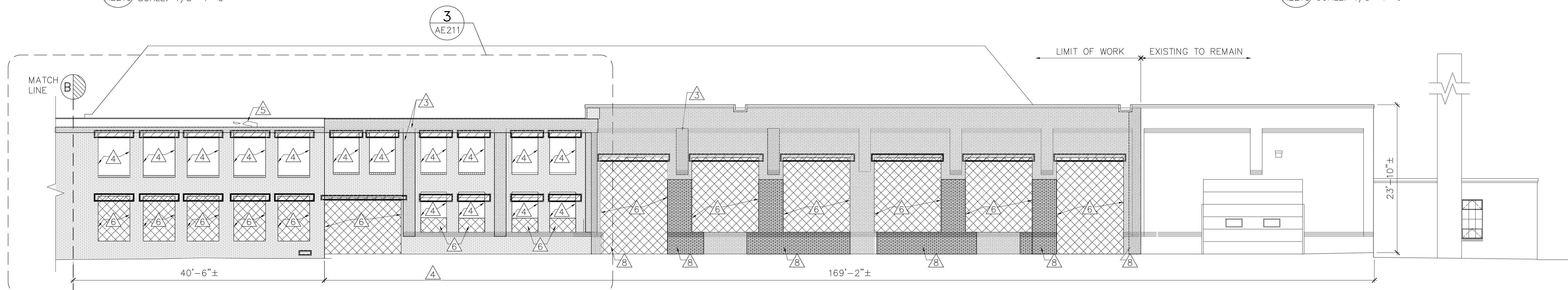


2 EXISTING SOUTH ELEVATION
AE210/ SCALE: 1/8"=1'-0"

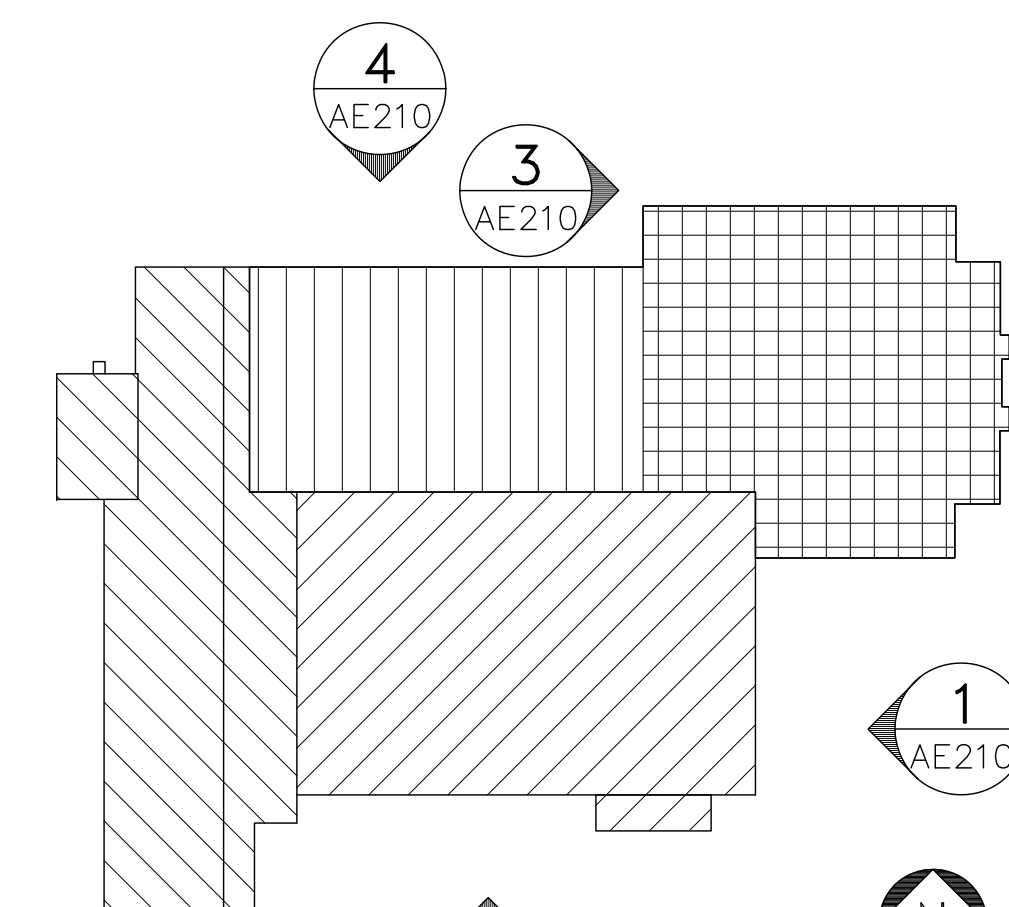


4 EXISTING NORTH ELEVATION
AE210/ SCALE: 1/8"=1'-0"

3 EXISTING PART WEST ELEVATION
AE210/ SCALE: 1/8"=1'-0"



4 EXISTING NORTH ELEVATION
AE210/ SCALE: 1/8"=1'-0"



KEYPLAN
NOT TO SCALE
PLAN NORTH

