

TGB
 DEM
 TGB
 21502.10
 DESIGNED BY:
 DRAWN BY:
 CHECKED BY:
 PROJECT:

**UNIVERSITY OF NEW ENGLAND
 PORTLAND CAMPUS**
 STEVEN AVENUE ARMORY
 716 STEVENS AVE
 PORTLAND, MAINE 04103
 11207285-0171

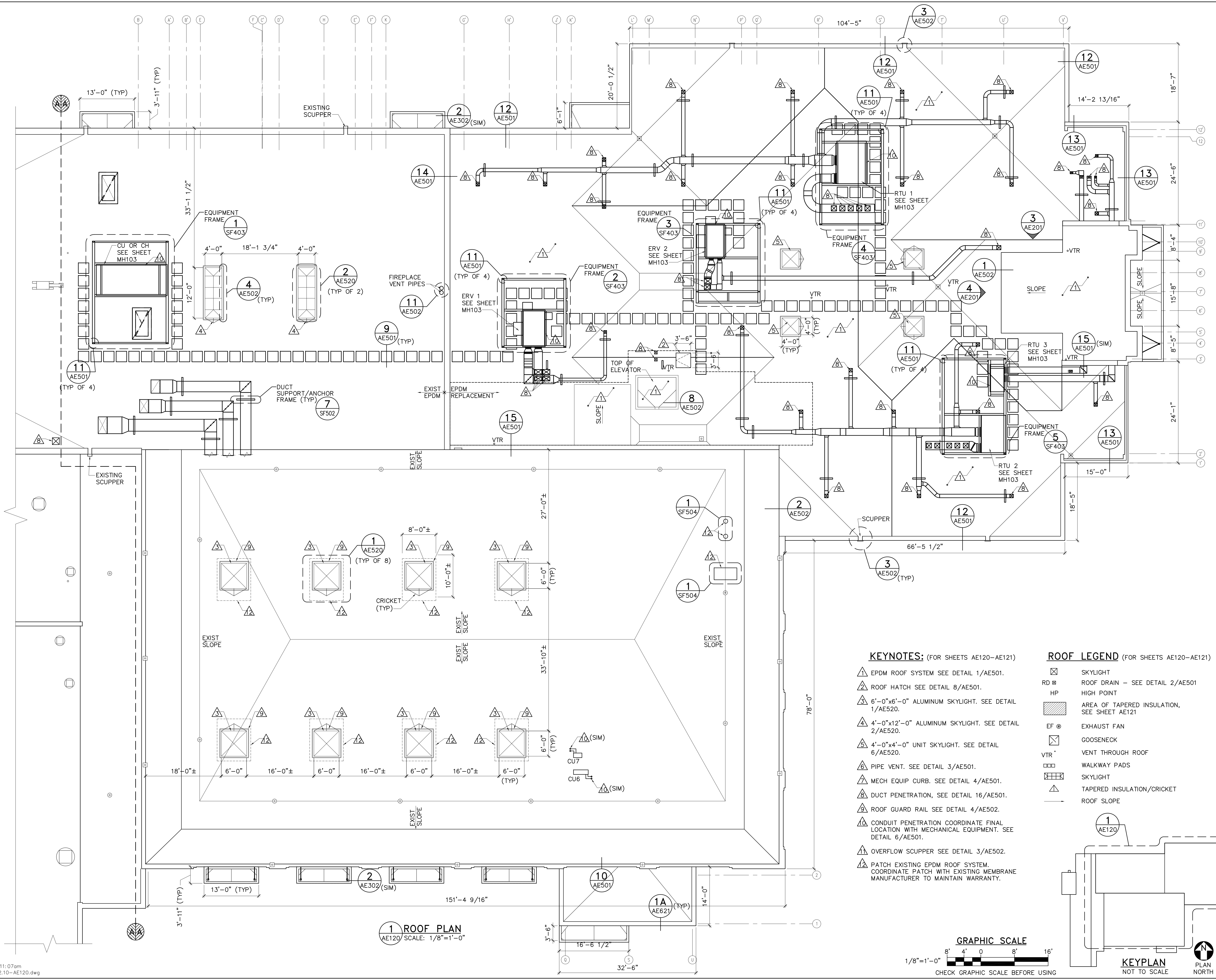
**RENOVATIONS TO THE
 STEVENS AVENUE ARMORY**

**PARTIAL
 ROOF
 PLAN**

SCALE: AS NOTED
 DATE: 05-24-16

DWG. **AE120**

SHEET: 60 OF 169



KEYNOTES: (FOR SHEETS AE120-AE121)

- ▲ EPDM ROOF SYSTEM SEE DETAIL 1/AE501.
- ▲ ROOF HATCH SEE DETAIL 8/AE501.
- ▲ 6'-0" x 6'-0" ALUMINUM SKYLIGHT. SEE DETAIL 1/AE520.
- ▲ 4'-0" x 12'-0" ALUMINUM SKYLIGHT. SEE DETAIL 2/AE520.
- ▲ 4'-0" x 4'-0" UNIT SKYLIGHT. SEE DETAIL 6/AE520.
- ▲ PIPE VENT. SEE DETAIL 3/AE501.
- ▲ MECH EQUIP CURB. SEE DETAIL 4/AE501.
- ▲ DUCT PENETRATION, SEE DETAIL 16/AE501.
- ▲ ROOF GUARD RAIL SEE DETAIL 4/AE502.
- ▲ CONDUIT PENETRATION COORDINATE FINAL LOCATION WITH MECHANICAL EQUIPMENT. SEE DETAIL 6/AE501.
- ▲ OVERFLOW SCUPPER SEE DETAIL 3/AE502.
- ▲ PATCH EXISTING EPDM ROOF SYSTEM. COORDINATE PATCH WITH EXISTING MEMBRANE MANUFACTURER TO MAINTAIN WARRANTY.

ROOF LEGEND (FOR SHEETS AE120-AE121)

- ☒ SKYLIGHT
- RD ■ ROOF DRAIN - SEE DETAIL 2/AE501
- HP ■ HIGH POINT
- ▨ AREA OF TAPERED INSULATION, SEE SHEET AE121
- EF ● EXHAUST FAN
- ☒ GOOSENECK
- VTR ↑ VENT THROUGH ROOF
- WALKWAY PADS
- ☒ SKYLIGHT
- ▲ TAPERED INSULATION/CRICKET
- ROOF SLOPE

