

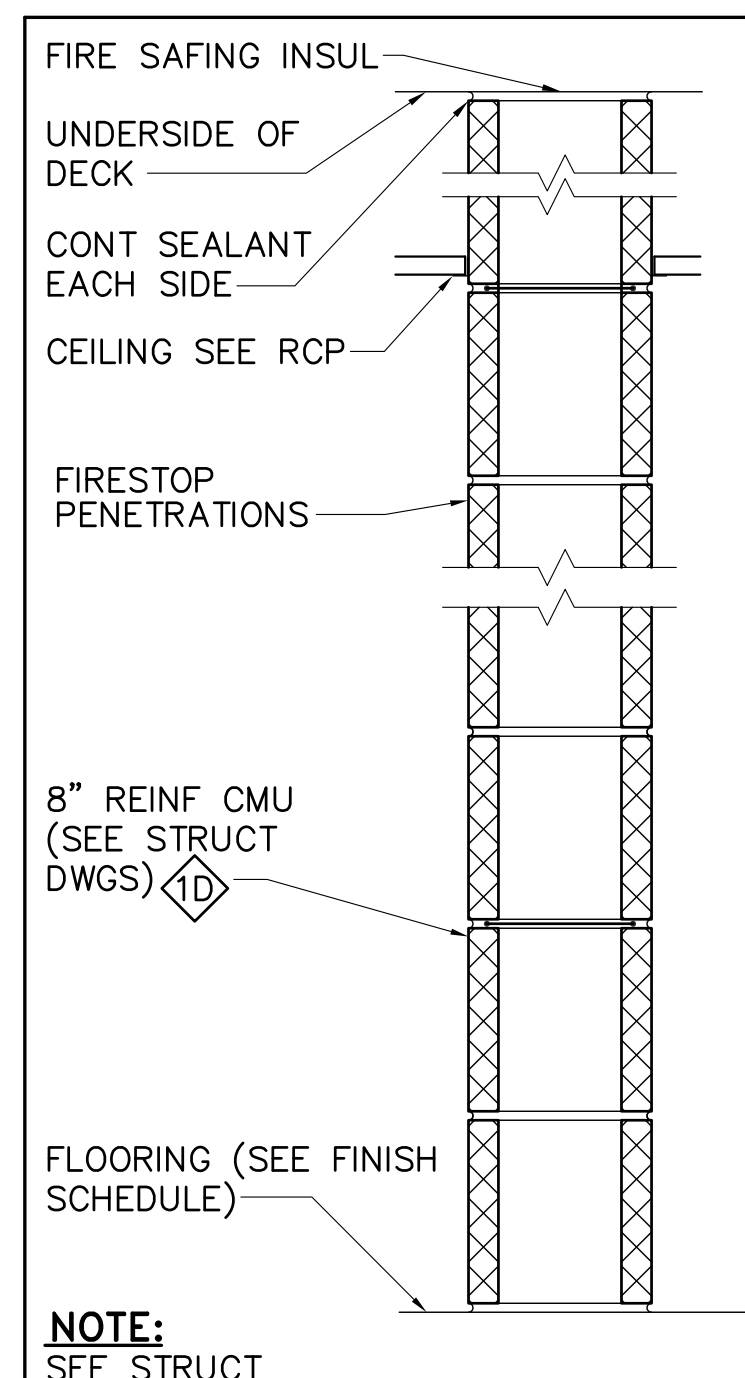
**NOTE:**  
SEE 2/AE003 FOR BOTTOM OF WALL DETAIL.

3-5/8" METAL STUD FULL HGT 1 HOUR RATED UL U465

6" METAL STUD FULL HGT 1 HOUR RATED UL U465

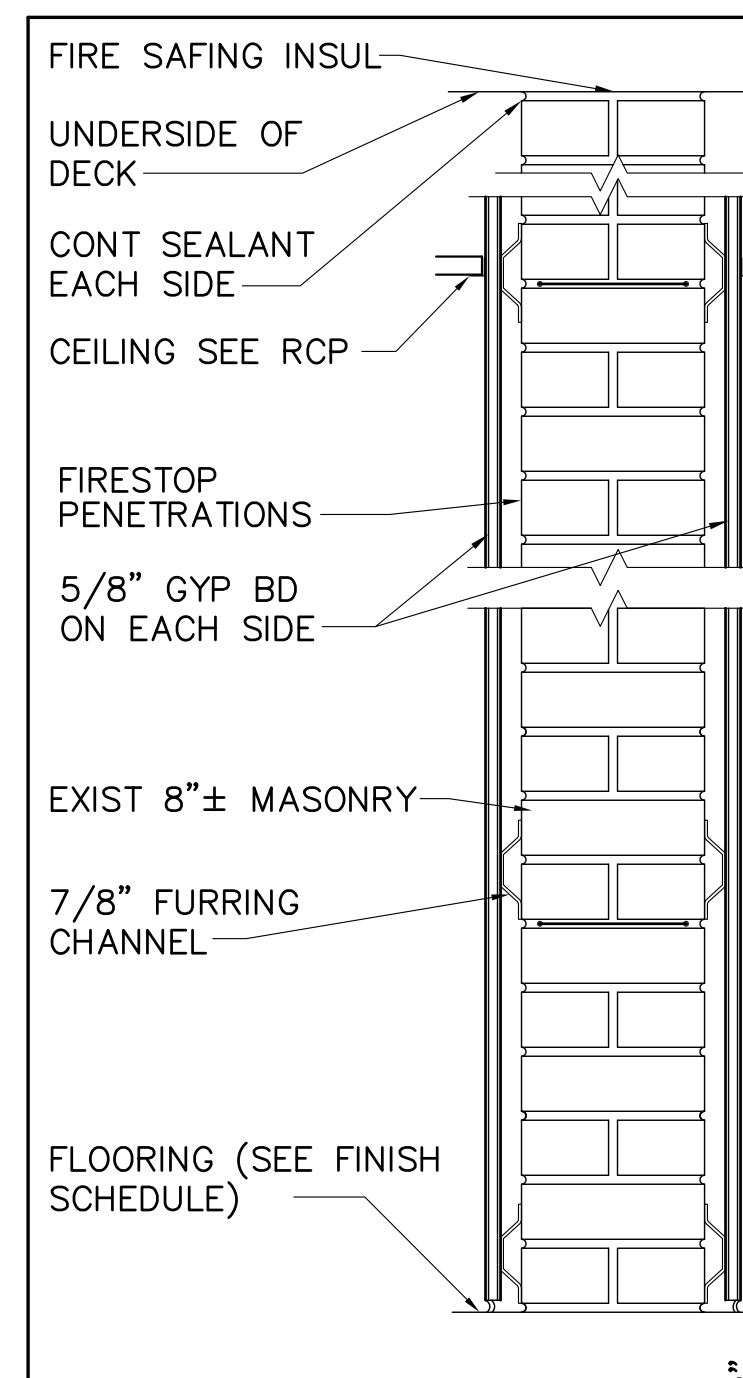
3-5/8" METAL STUD FULL HGT 1 HOUR RATED UL U465 1/2" RESILIENT CHANNELS @ 16" OC

6" METAL STUD FULL HGT 1 HOUR RATED UL U465 1/2" RESILIENT CHANNELS @ 16" OC



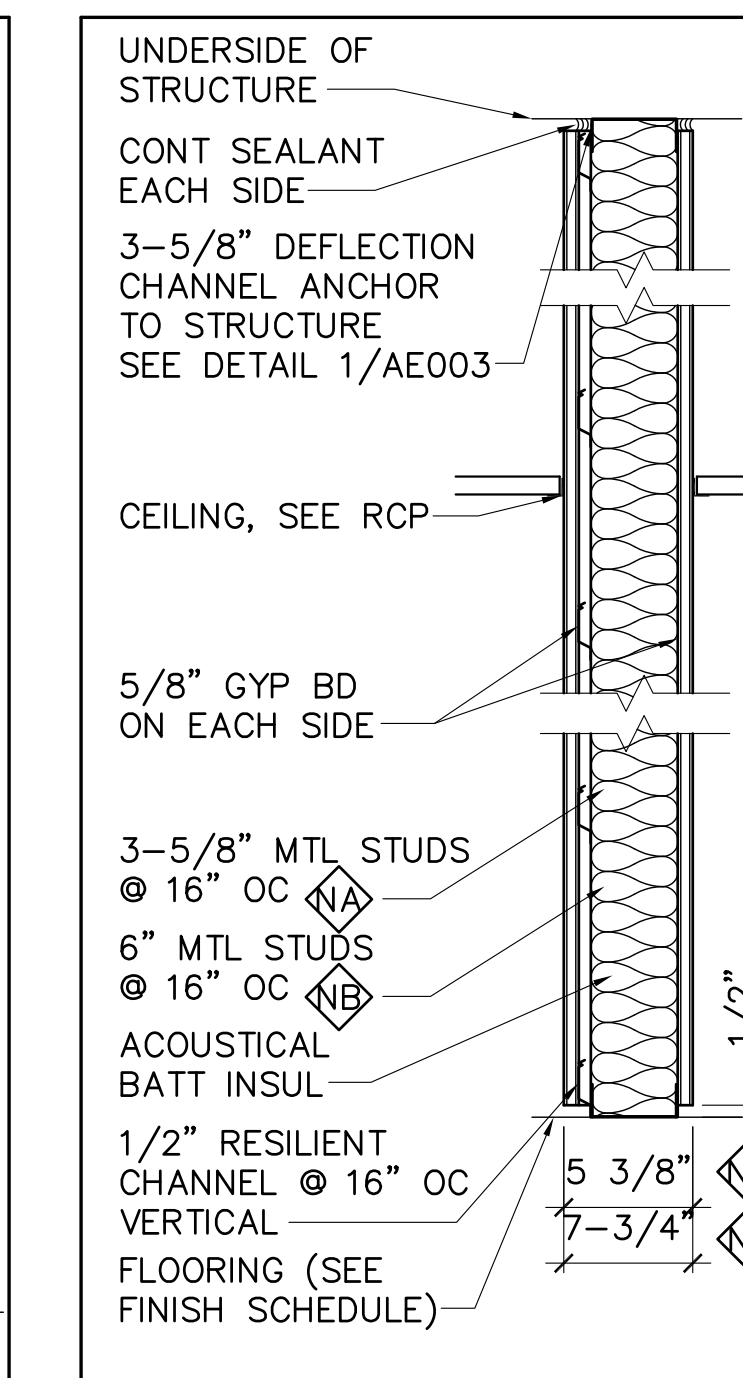
**NOTE:**  
SEE STRUCT DWGS FOR DETAILS.

8" REINFORCED CMU 1 HOUR RATED UL U906



**NOTE:**  
SEE 2/AE003 FOR BOTTOM OF WALL DETAIL.

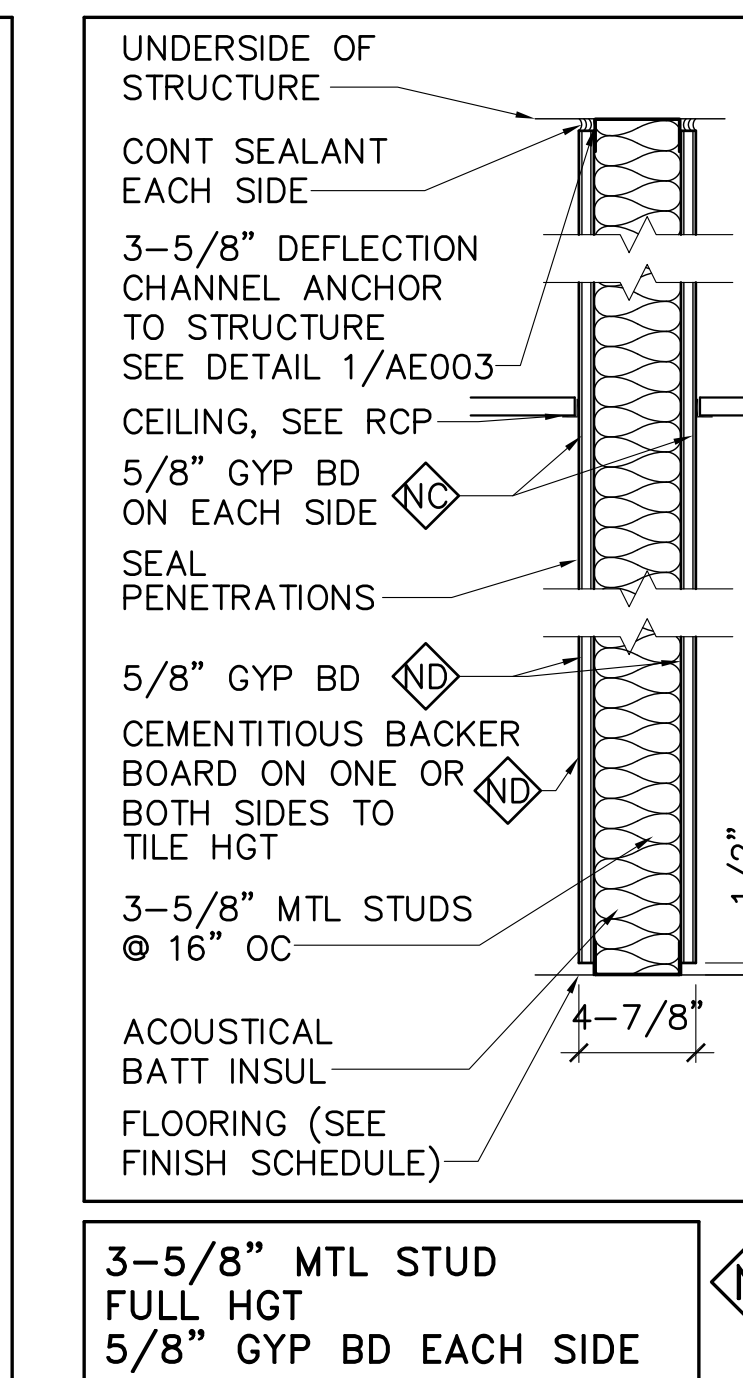
EXIST 8" MASONRY WALL WITH TWO SIDES FURRED 1 HOUR RATED UL U906



**NOTE:**  
SEE 2/AE003 FOR BOTTOM OF WALL DETAIL.

3-5/8" MTL STUD W/ 1/2" RESILIENT CHANNEL FULL HGT

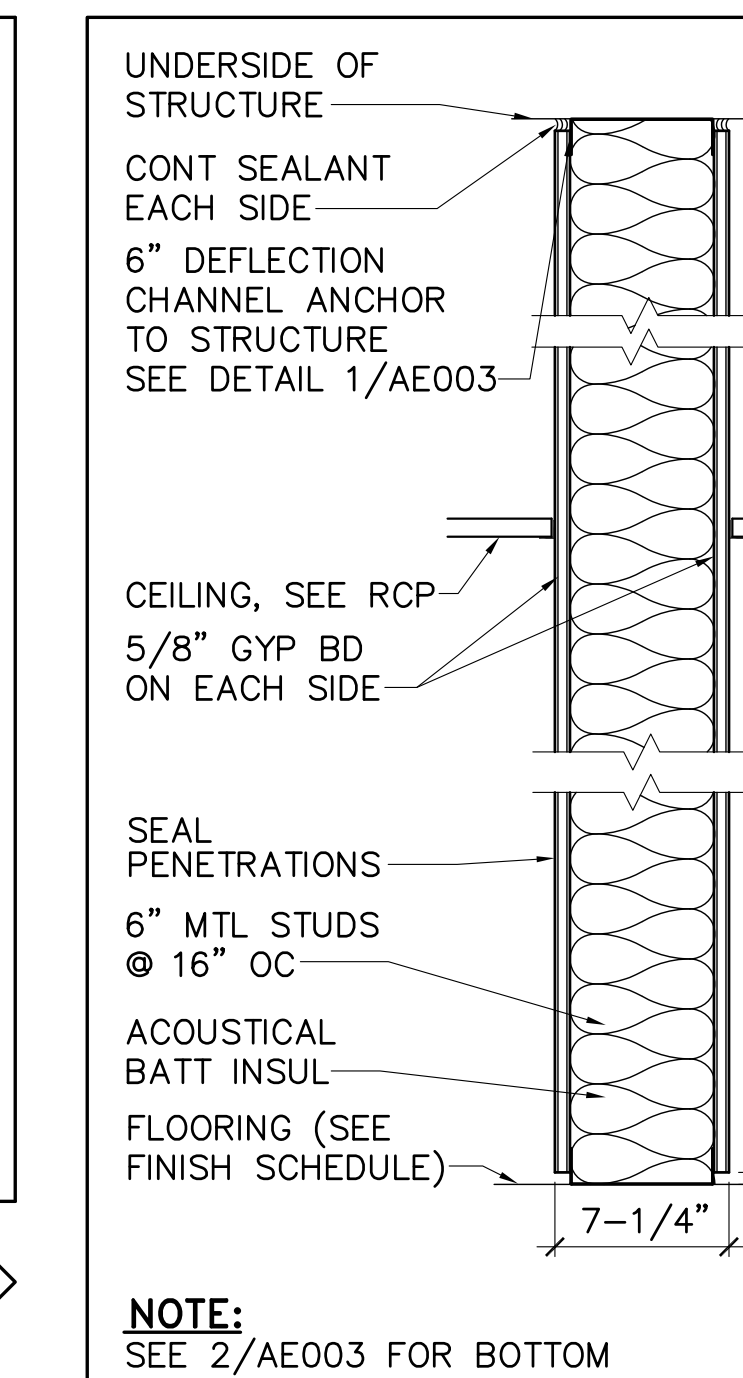
6" MTL STUD W/ 1/2" RESILIENT CHANNEL FULL HGT



**NOTE:**  
SEE 2/AE003 FOR BOTTOM OF WALL DETAIL.

3-5/8" MTL STUD FULL HGT 5/8" GYP BD EACH SIDE

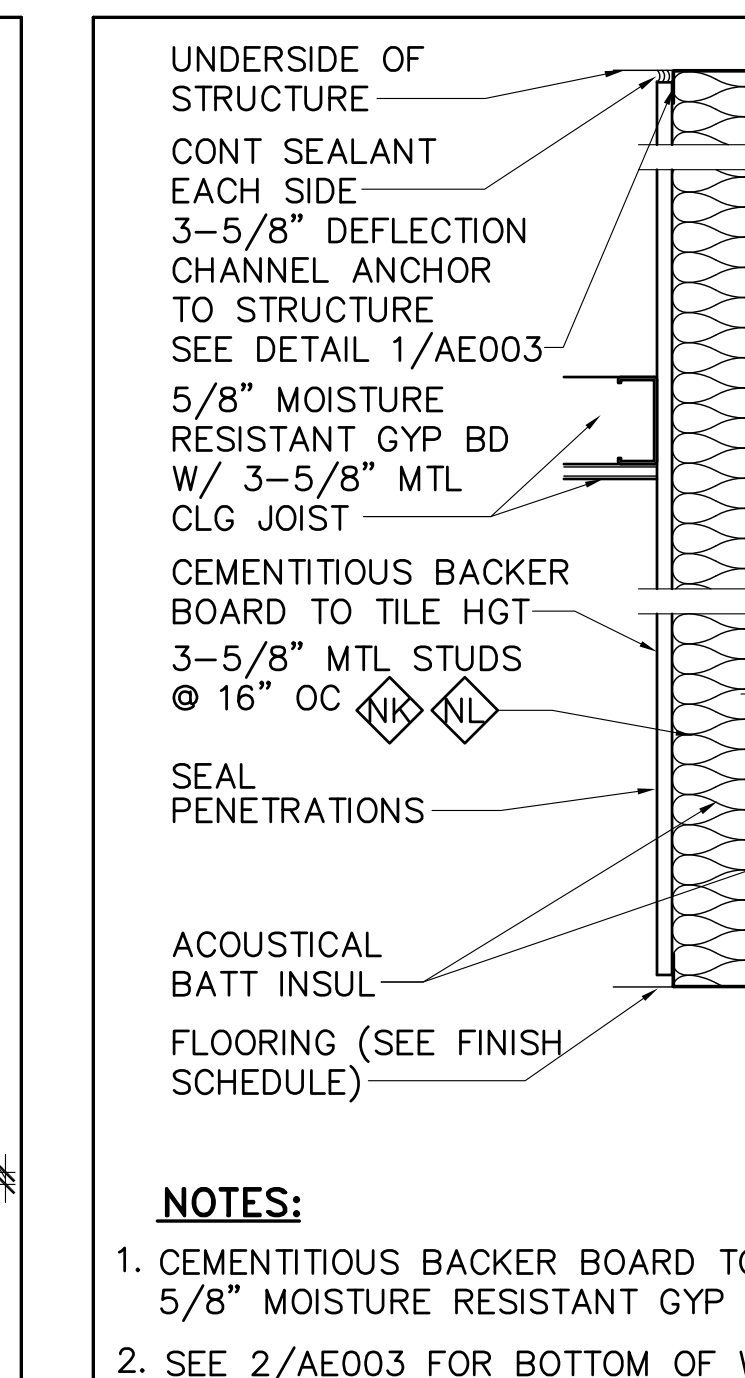
3-5/8" MTL STUD FULL HGT (NO INSULATION) 5/8" GYP BD EACH SIDE



**NOTE:**  
SEE 2/AE003 FOR BOTTOM OF WALL DETAIL.

6" MTL STUD FULL HGT

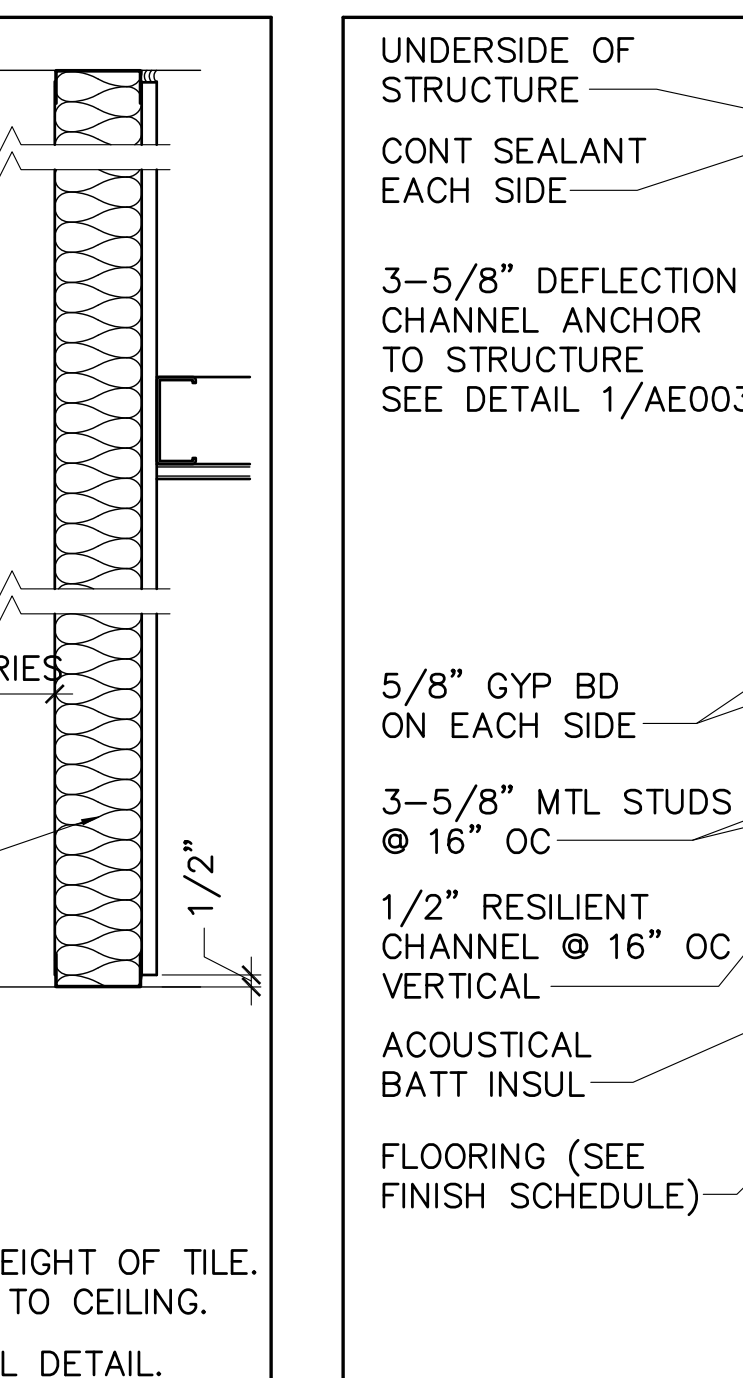
3-5/8" MTL STUD 5/8" GYP BD ONE SIDE NO INSULATION



**NOTE:**  
SEE 2/AE003 FOR BOTTOM OF WALL DETAIL.

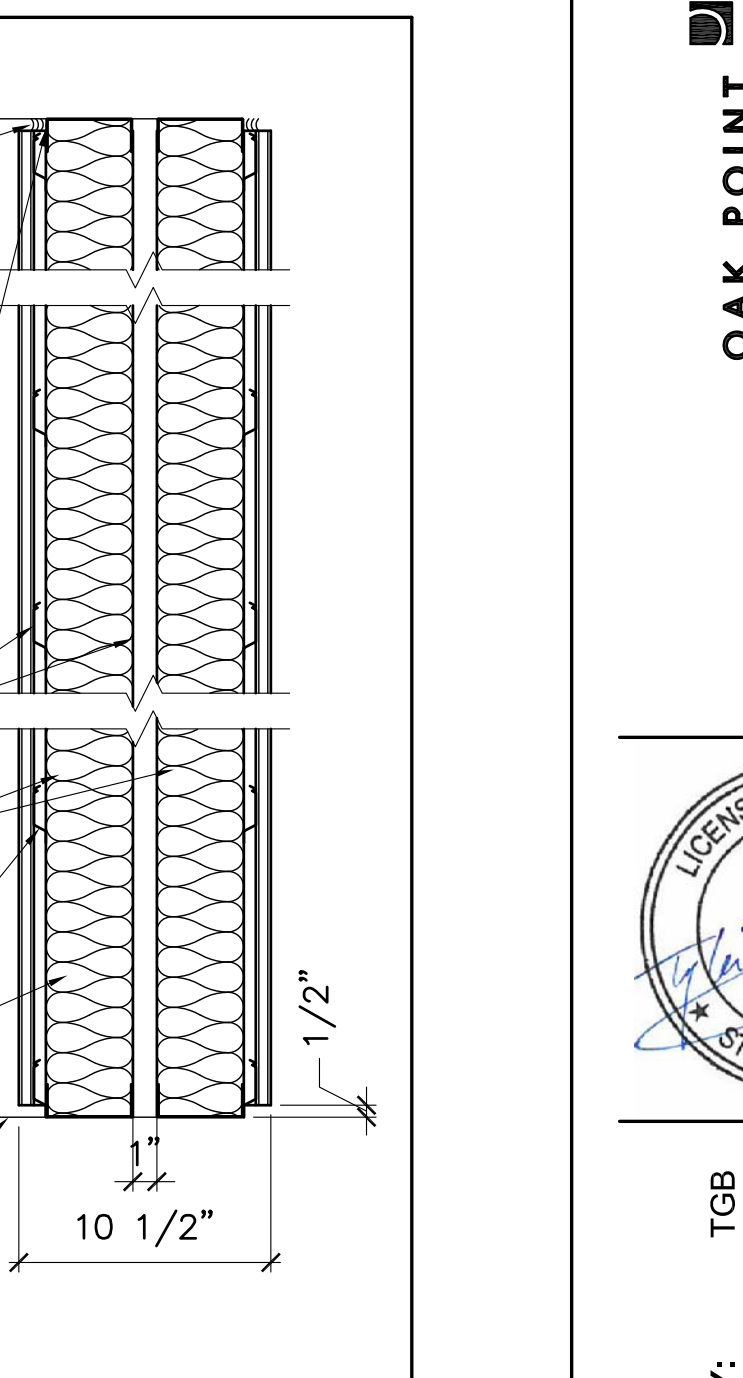
3 5/8" MTL STUD CHASE WALL FULL HEIGHT W/ WALL TILE

3 5/8" MTL STUD CHASE WALL FULL HEIGHT



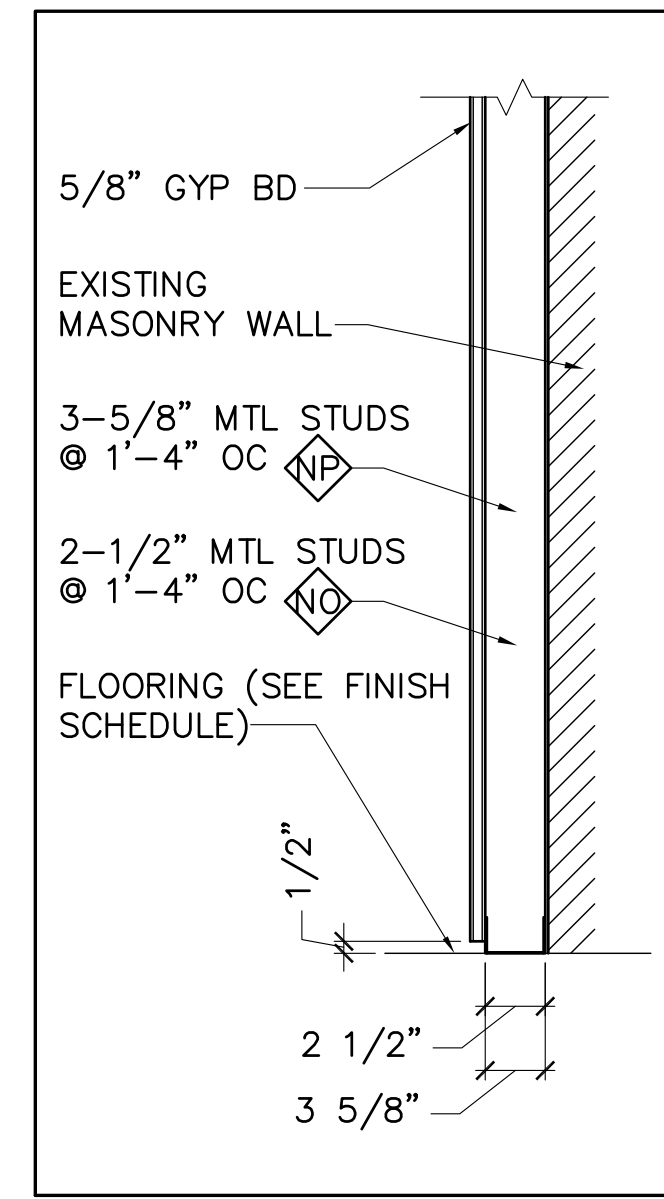
**NOTE:**  
SEE 2/AE003 FOR BOTTOM OF WALL DETAIL.

3-5/8" MTL STUD W/ 1/2" RESILIENT CHANNEL FULL HGT



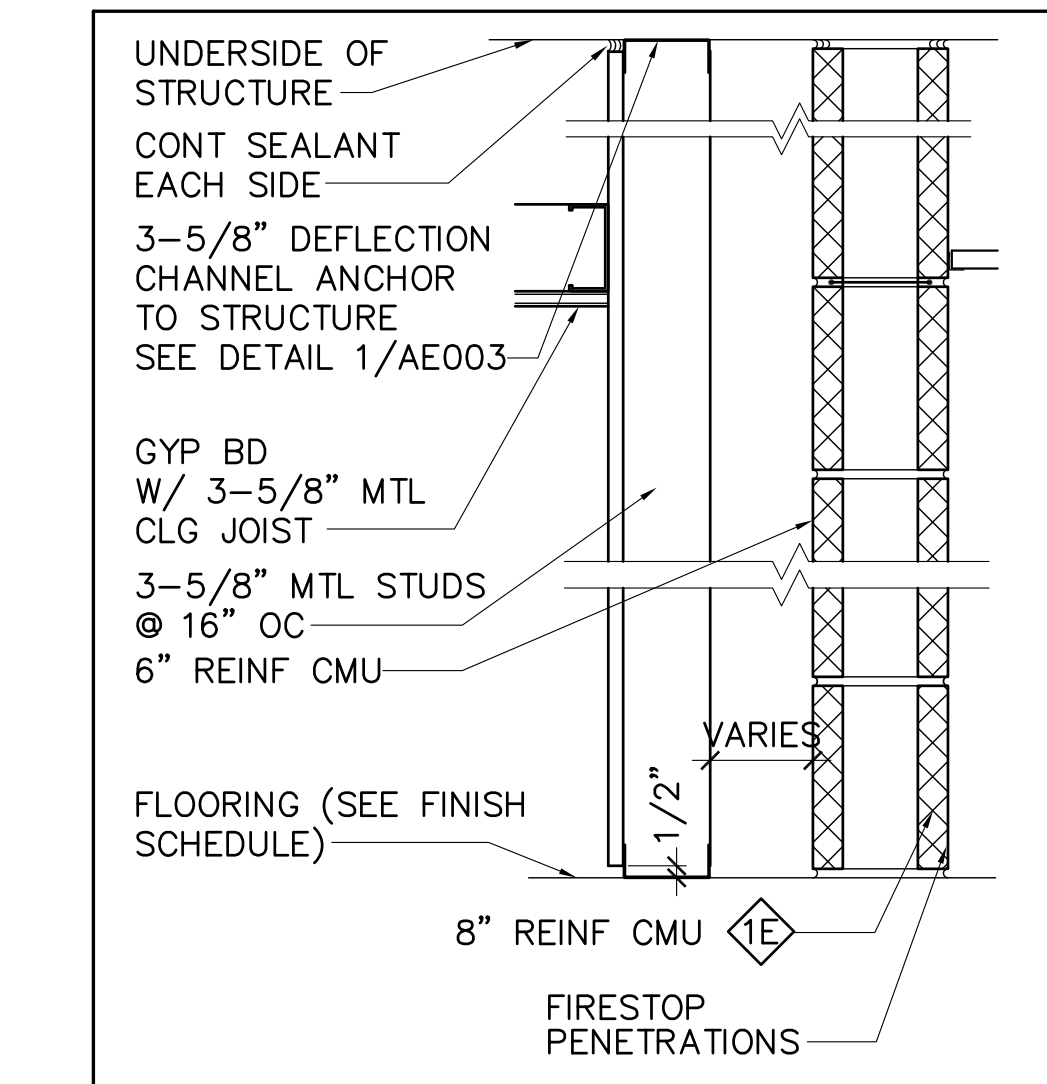
**NOTE:**  
SEE 2/AE003 FOR BOTTOM OF WALL DETAIL.

3-5/8" MTL STUD W/ 1/2" RESILIENT CHANNEL FULL HGT



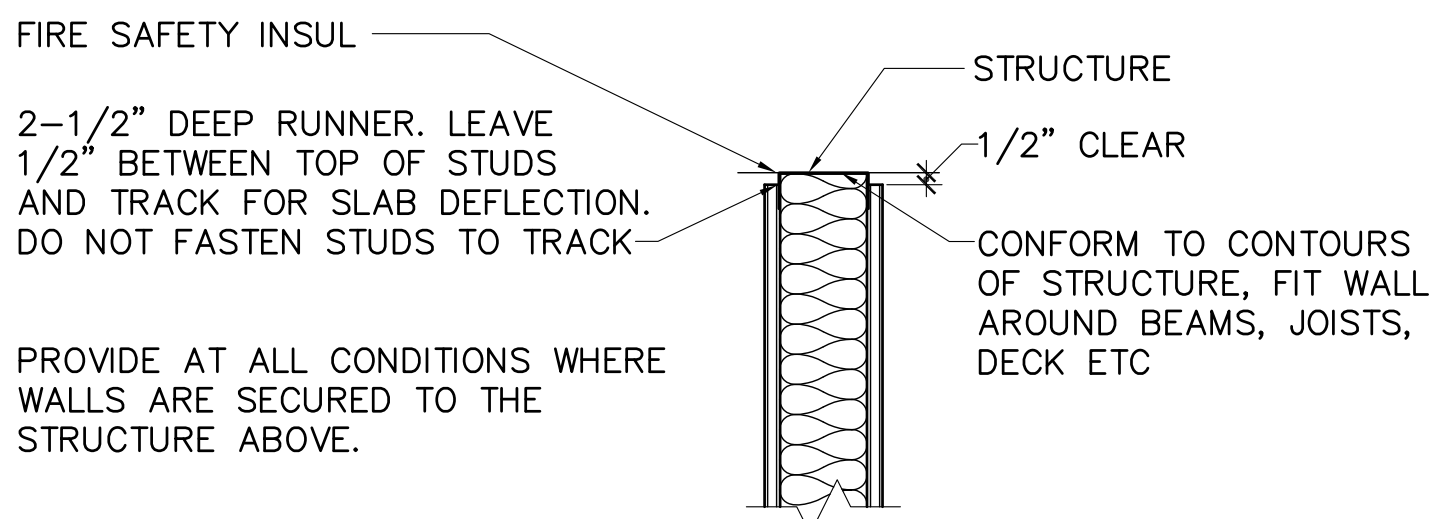
2-1/2" MTL STUD FURRED WALL

3-5/8" MTL STUD FURRED WALL

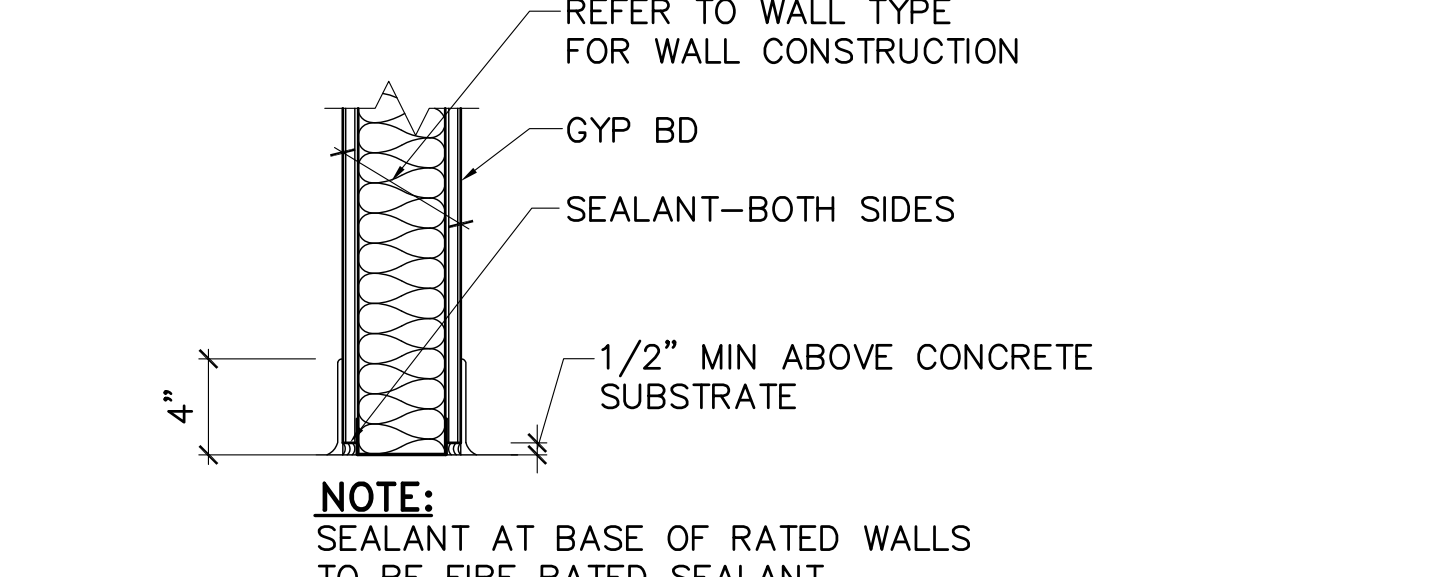


**NOTE:**  
1. SEE STRUCT DWGS FOR DETAILS.  
2. CEMENTITIOUS BACKER BOARD TO HEIGHT OF TILE. 5/8" MOISTURE RESISTANT GYP BD TO CEILING.  
3. SEE 2/AE003 FOR BOTTOM OF WALL DETAIL.  
4. SEAL PENETRATIONS

METAL STUD/CMU CHASE WALL FULL HEIGHT



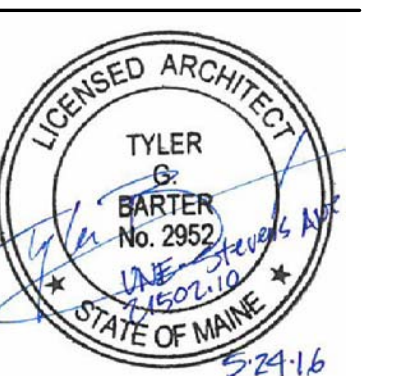
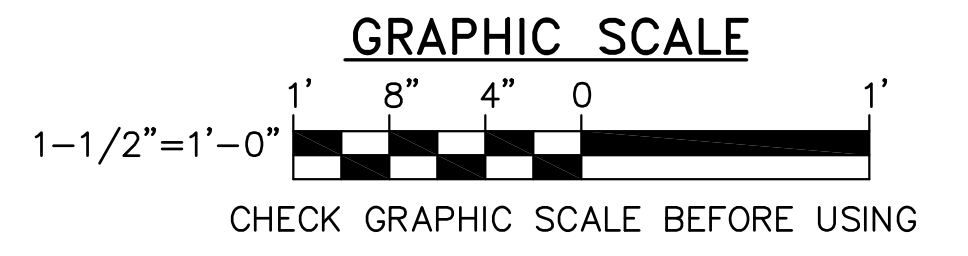
**1 TYPICAL DEFLECTION CHANNEL DETAIL**  
AE003 SCALE: 1-1/2"=1'-0"



**2 TYPICAL GYPSUM BOARD SILL DETAIL**  
AE003 SCALE: 1-1/2"=1'-0"

**GENERAL NOTES:** (THIS SHEET ONLY)

- PROVIDE 5/8" ABUSE RESISTANT (VHI) GYPSUM BOARD AT ALL EXPOSED CORRIDOR WALLS TO 8'-0" MIN AFF AND AS INDICATED. ABUSE RESISTANT GYPSUM BOARD IS NOT REQUIRED BEHIND LOCKERS.
- SEE STRUCTURAL DRAWINGS FOR MASONRY WALL REINFORCING.
- SEE ROOM FINISH SCHEDULE FOR WALL FINISHES.
- GYPSUM BOARD WALLS WITH CERAMIC TILE FINISH SHALL HAVE 5/8" CEMENTITIOUS BACKER BOARD TO HEIGHT OF TILE. COORDINATE CERAMIC TILE WAINSCOTING WITH INTERIOR TOILET ELEVATIONS AND FINISH SCHEDULES.
- AT FIRE RESISTANT RATED ASSEMBLIES PROVIDE TESTED AND LISTED FIRESTOP SYSTEMS TO MAINTAIN THE INTEGRITY OF THE FIRE RESISTANT RATING. AREAS REQUIRING FIRESTOP SYSTEMS INCLUDE MEMBRANE PENETRATIONS, THROUGH PENETRATIONS, JOINTS BETWEEN ASSEMBLIES AND CONSTRUCTION JOINTS.
- REFER TO G101-G103 FOR LIMITS OF FIRE RATED ASSEMBLIES AND TO AE003 FOR FIRE STOPPERS DETAILS AT SMOKE BARRIERS AND SMOKE PARTITIONS PROVIDE SEALANT TO MAINTAIN THE INTEGRITY OF THE SMOKE RESISTANCE OF THE ASSEMBLY. AREAS REQUIRING SEALANT INCLUDE MEMBRANE PENETRATIONS, THROUGH PENETRATIONS, JOINTS BETWEEN ASSEMBLIES AND CONSTRUCTION JOINTS.
- WHERE FLOORS INTERSECT EXTERIOR CURTAIN WALLS, PROVIDE A JOINT SYSTEM THAT IS CAPABLE OF LIMITING THE TRANSFER OF SMOKE.
- REFER TO SHEET AE520 FOR RATED WALL PENETRATION AND TOP OF WALL DETAILS.



DESIGNED BY: TGB  
DRAWN BY: DEM TGB  
CHECKED BY: TGB  
PROJECT: 21502.10

UNIVERSITY OF NEW ENGLAND  
PORTLAND CAMPUS  
STEVEN AVENUE ARMORY  
716 STEVENS AVE  
PORTLAND, MAINE 04103  
1(207) 263-0171

RENOVATIONS TO THE  
STEVEN AVENUE ARMORY

WALL TYPES AND DETAILS

SCALE: AS NOTED  
DATE: 05-24-16

DWG. AE002

SHEET: 55 OF 169