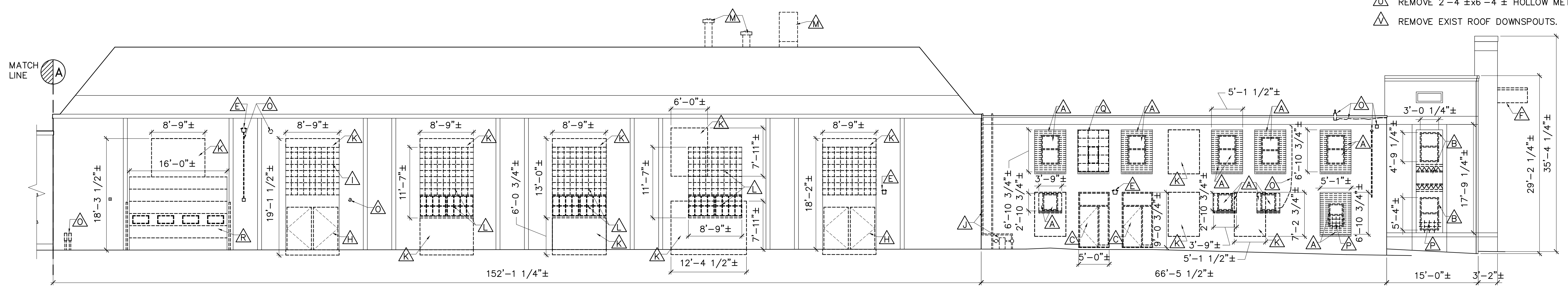
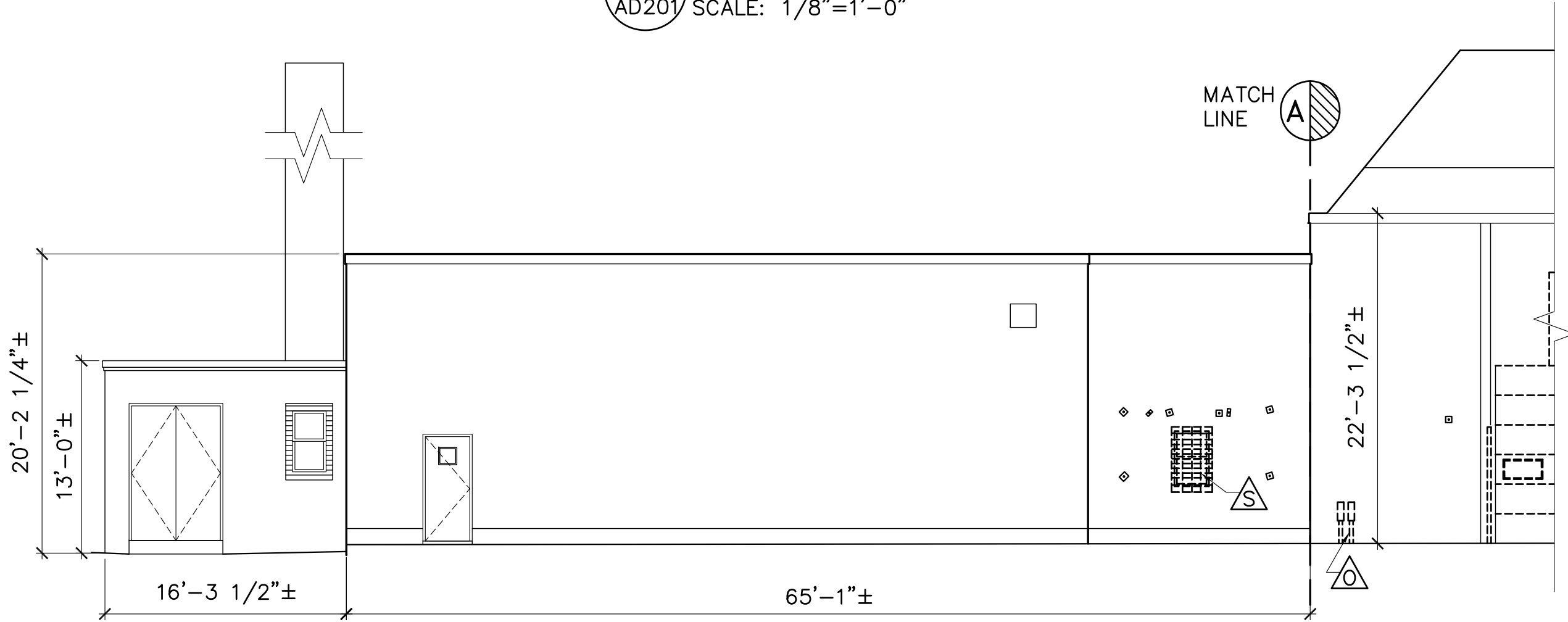


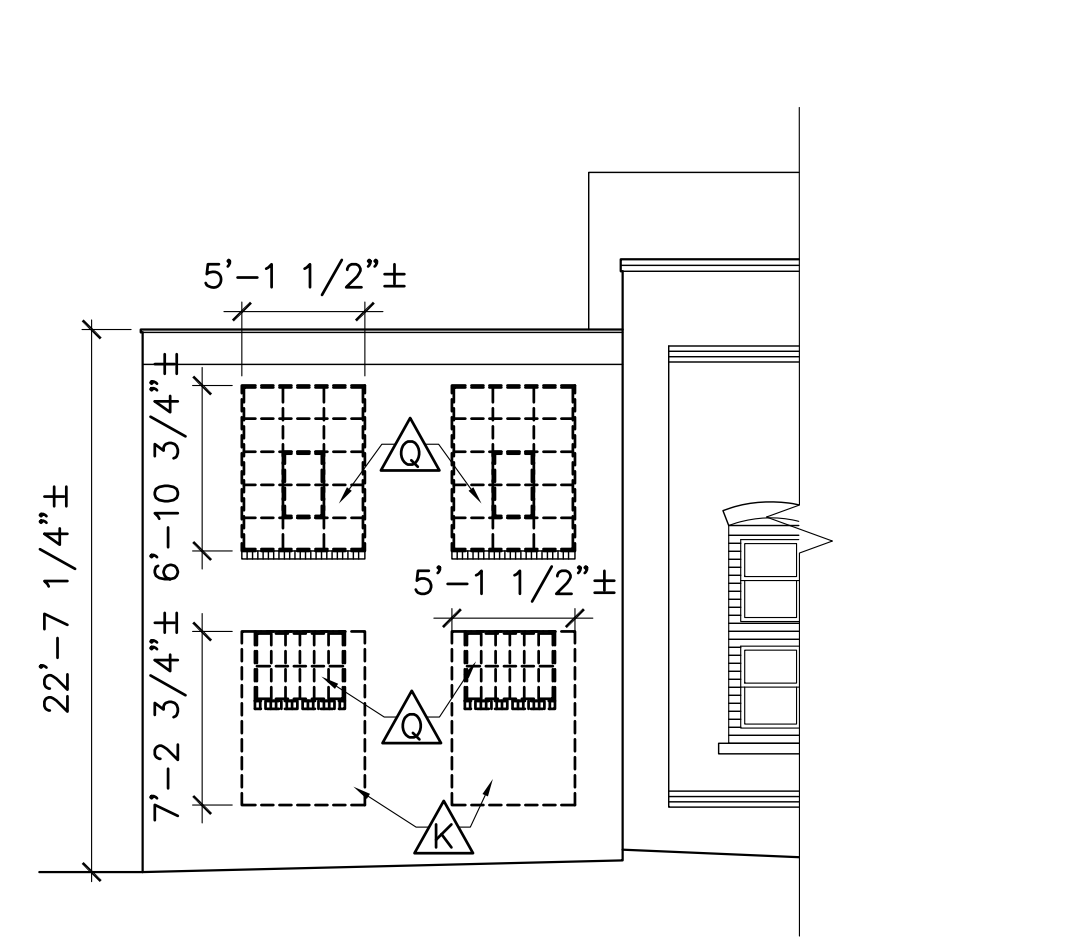
**1 REMOVALS EAST ELEVATION**  
AD201 SCALE: 1/8"=1'-0"



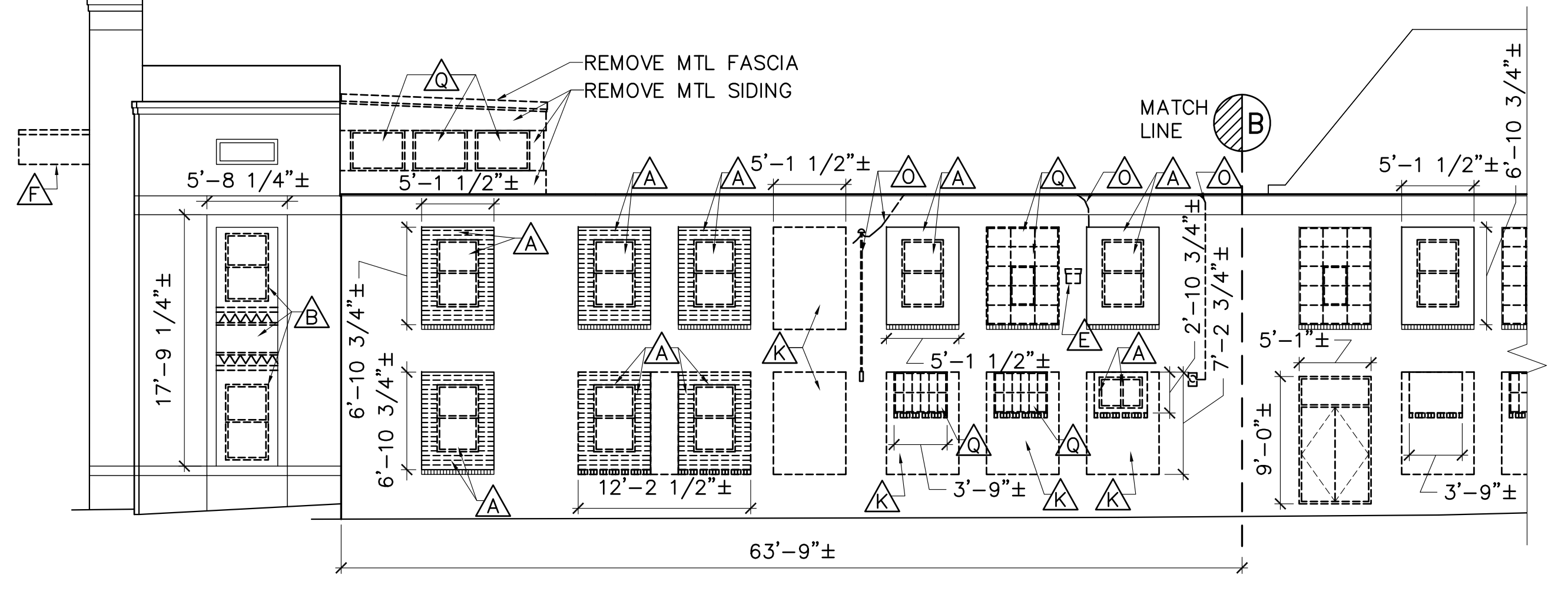
**2 REMOVALS SOUTH ELEVATION**  
AD201 SCALE: 1/8"=1'-0"



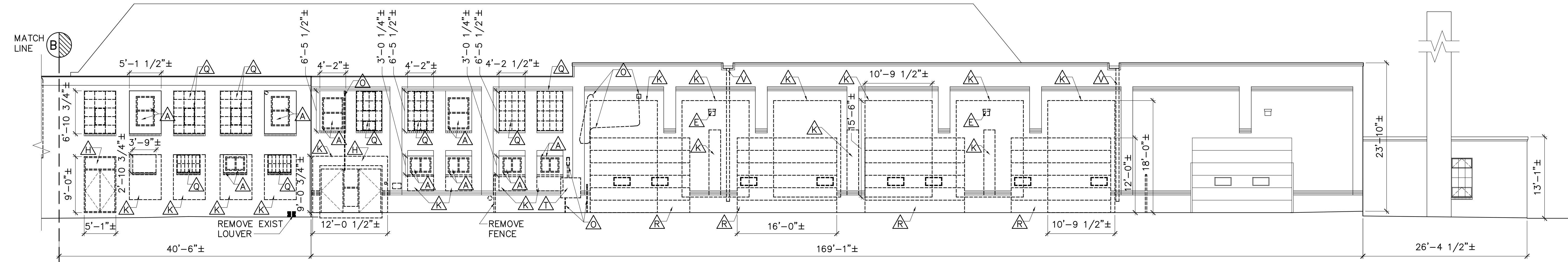
**2 REMOVALS SOUTH ELEVATION CONT**  
AD201 SCALE: 1/8"=1'-0"



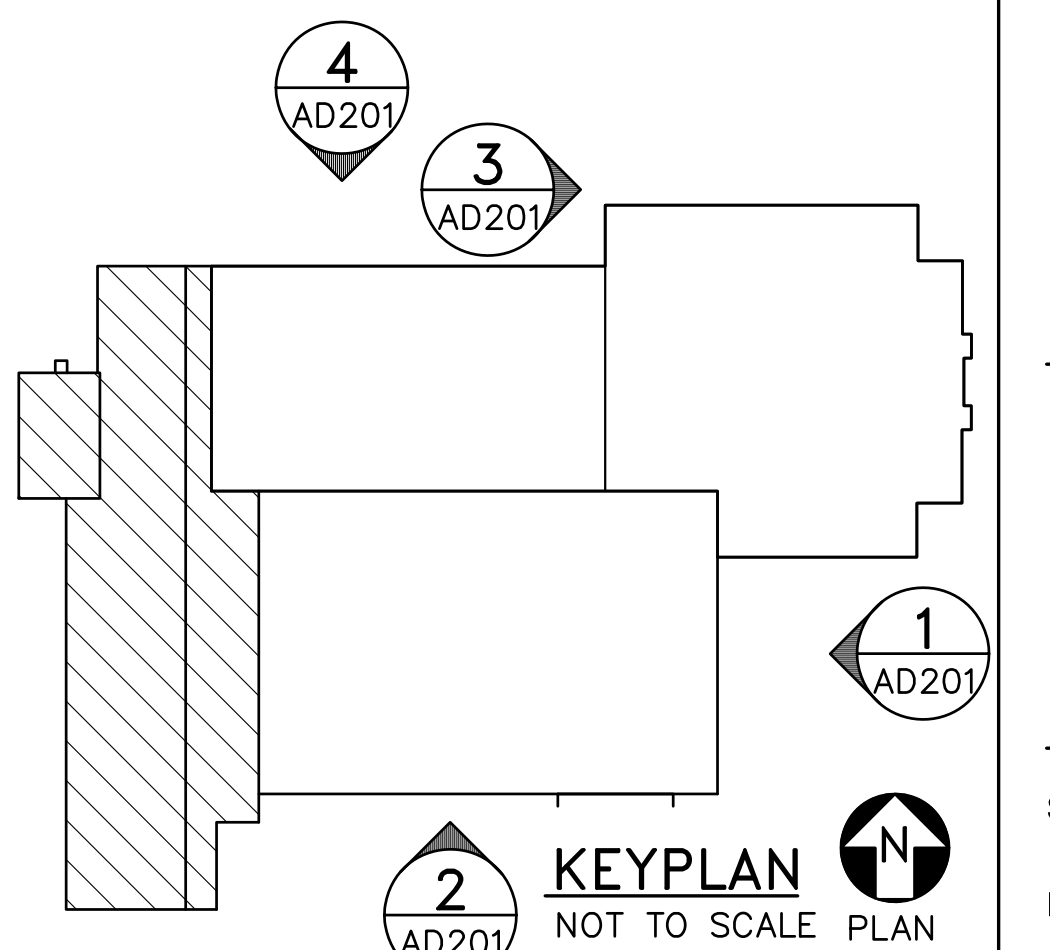
**3 REMOVALS PART WEST ELEVATION**  
AD201 SCALE: 1/8"=1'-0"



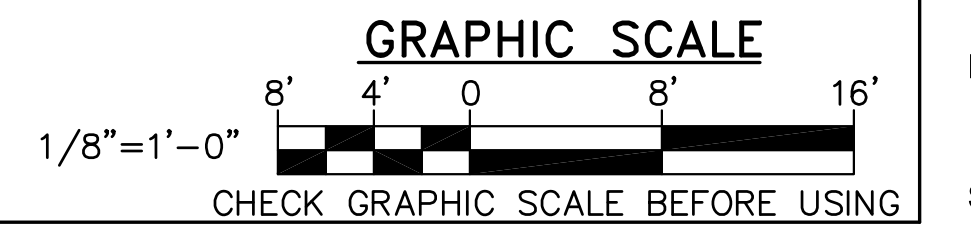
**4 REMOVALS NORTH ELEVATION CONT**  
AD201 SCALE: 1/8"=1'-0"



**4 REMOVALS NORTH ELEVATION**  
AD201 SCALE: 1/8"=1'-0"

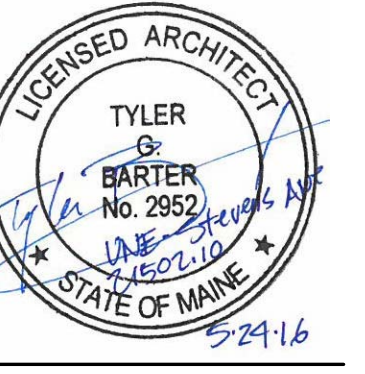


**KEYPLAN**  
NOT TO SCALE PLAN NORTH



CHECK GRAPHIC SCALE BEFORE USING

- REMOVAL KEYNOTES** (FOR SHEETS AD201-AD202)
- △ REMOVE WOOD FRAMED WINDOW, VINYL SIDING, SHEATHING, WOOD FRAMING AND INSIDE FINISHES.
  - △ REMOVE AND SALVAGE PRECAST CONCRETE DECORATIVE PANEL AND RETURN TO OWNER. REMOVE PRECAST FRAMING, WOOD FRAMED WINDOW, VINYL SIDING, SHEATHING, WOOD FRAMING AND INSIDE FINISHES.
  - △ REMOVE ALUMINUM STOREFRONT DOORS, SIDE LIGHTS, HARDWARE AND FRAMES.
  - △ REMOVE VINYL SIDING, WOOD SHEATHING, WOOD FRAMING AND INSIDE FINISHES.
  - △ REMOVE EXTERIOR LIGHTING, SEE ELECTRICAL DRAWINGS.
  - △ REMOVE METAL SIDING CANOPY, ROOFING AND FRAMING.
  - △ REMOVE PRECAST CONCRETE AND WINDOWS.
  - △ REMOVE METAL DOORS AND FRAMES.
  - △ REMOVE GLASS BLOCK WINDOW.
  - △ REMOVE GAS ENTRY AND WALL MOUNTED PIPING. SEE MECHANICAL DRAWINGS.
  - △ REMOVE BRICK IN A TOOTH PATTERN SALVAGE BRICK FOR REUSE.
  - △ REMOVE GLASS BLOCK WINDOW AND METAL FRAMED WINDOW.
  - △ REMOVE MECHANICAL DUCT ROOF WORK, SEE MECHANICAL DRAWINGS.
  - △ REMOVE SPRINKLER CONNECTION AND HOSE BID, SEE MECHANICAL DRAWINGS.
  - △ REMOVE ELECTRICAL WIRING, JUNCTION BOX KEEP CONDUIT.
  - △ REMOVE AIR CONDITION METAL GUARD.
  - △ REMOVE METAL FRAMED WINDOW.
  - △ REMOVE METAL OVERHEAD DOOR.
  - △ REMOVE METAL BARS AND WOOD FRAMED WINDOW.
  - △ REMOVE ELECTRICAL ENTRY BOX SEE ELECTRICAL DRAWINGS.
  - △ REMOVE 2'-4"±x6'-4"± HOLLOW METAL DOOR, FRAME AND HARDWARE.
  - △ REMOVE EXIST ROOF DOWNSPOUTS.



DESIGNED BY: TGB  
DRAWN BY: TGB  
CHECKED BY: TGB  
PROJECT: 21502.10

UNIVERSITY OF NEW ENGLAND  
PORTLAND CAMPUS  
STEVEN AVENUE ARMORY  
718 STEVEN AVENUE  
PORTLAND, MAINE 04103  
1 (207) 283-0171

RENOVATIONS TO THE  
STEVEN AVENUE ARMORY

REMOVALS  
EXTERIOR  
BUILDING  
ELEVATIONS

SCALE: AS NOTED  
DATE: 05-24-16

DWG. **AD201**

SHEET: **51** OF 169