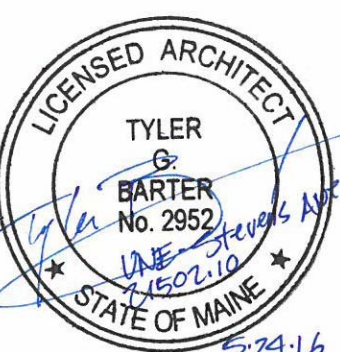


**DRAWING NOTES:**

1. SEE AD001 FOR REMOVAL KEYNOTES.
2. SEE AE210 FOR MASONRY RESTORATION AND WINDOW OPENINGS.



TGB  
 DEM  
 TGB  
 21502.10  
 DESIGNED BY:  
 DRAWN BY:  
 CHECKED BY:  
 PROJECT:

**UNIVERSITY OF NEW ENGLAND  
 PORTLAND CAMPUS**  
 STEVENS AVENUE ARMORY  
 716 STEVENS AVE  
 PORTLAND, MAINE 04103  
 (1) 207-283-0171

**RENOVATIONS TO THE  
 STEVENS AVENUE ARMORY**

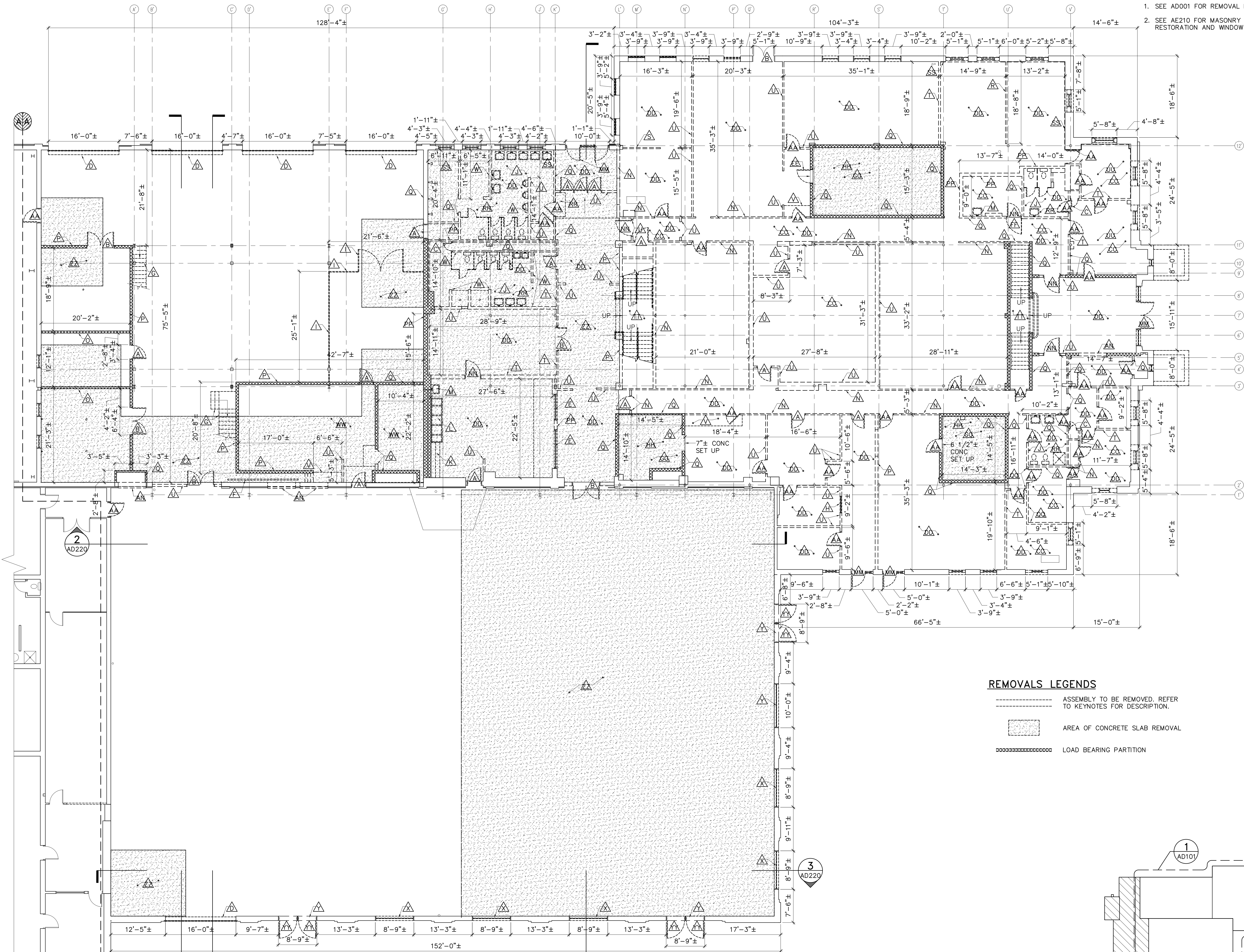
**FIRST FLOOR  
 REMOVALS  
 PART PLAN**

SCALE: AS NOTED

DATE: 05-24-16

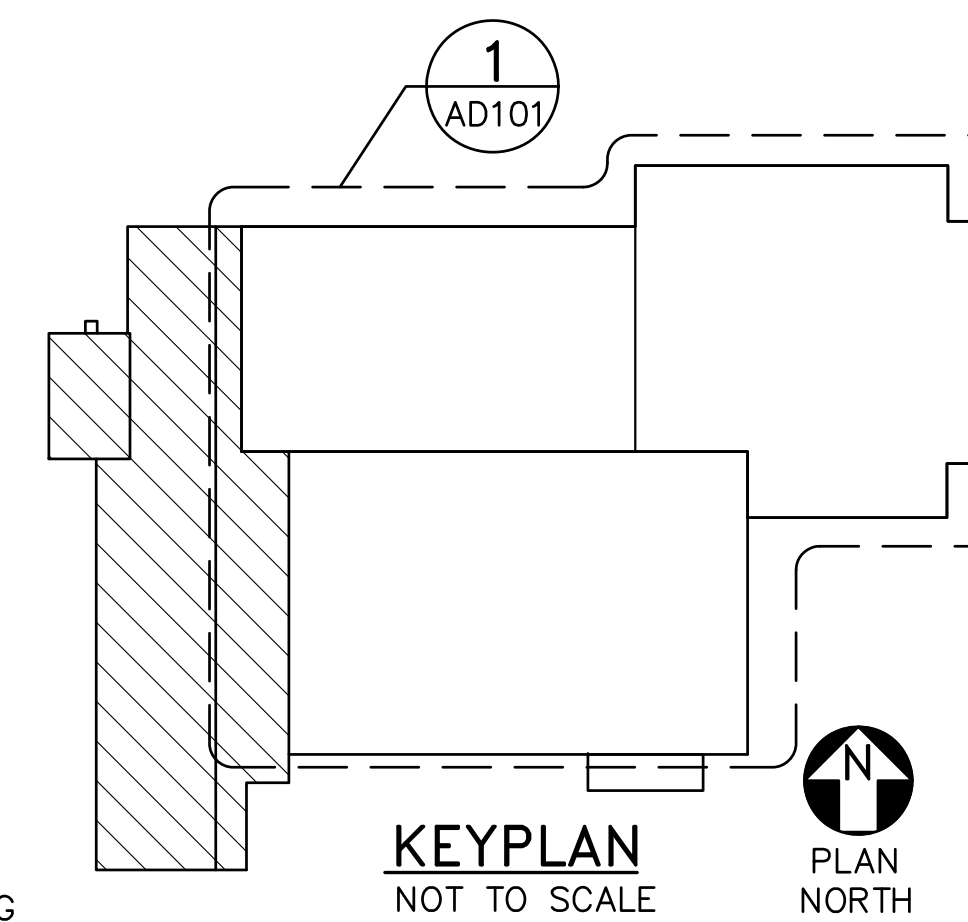
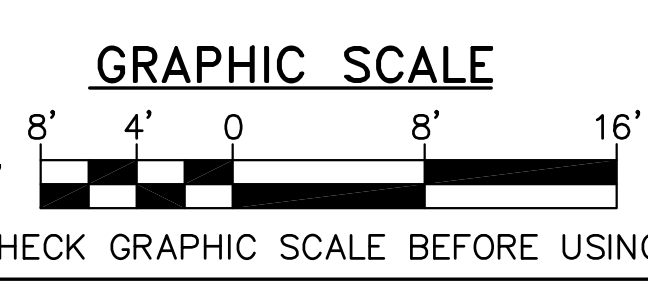
DWG. **AD101**

SHEET: **46** OF 169



**REMOVALS LEGENDS**

- ASSEMBLY TO BE REMOVED. REFER TO KEYNOTES FOR DESCRIPTION.
- [Stippled Area] AREA OF CONCRETE SLAB REMOVAL
- [Dashed Line] LOAD BEARING PARTITION



**1 FIRST FLOOR REMOVALS PART PLAN**  
 AD101 SCALE: 1/8"=1'-0"