

DRAWING NOTES:

1. SEE AD001 FOR REMOVAL KEYNOTES.

35%  
SUBMISSION

DESIGNED BY: TGB  
 DRAWN BY: DEM  
 CHECKED BY: TGB  
 PROJECT: 21502.10

UNIVERSITY OF NEW ENGLAND  
 PORTLAND CAMPUS  
 STEVEN AVENUE ARMORY  
 716 STEVENS AVE  
 PORTLAND, MAINE 04103  
 (1) 207.283-0171

RENOVATIONS TO THE  
 STEVENS AVENUE ARMORY

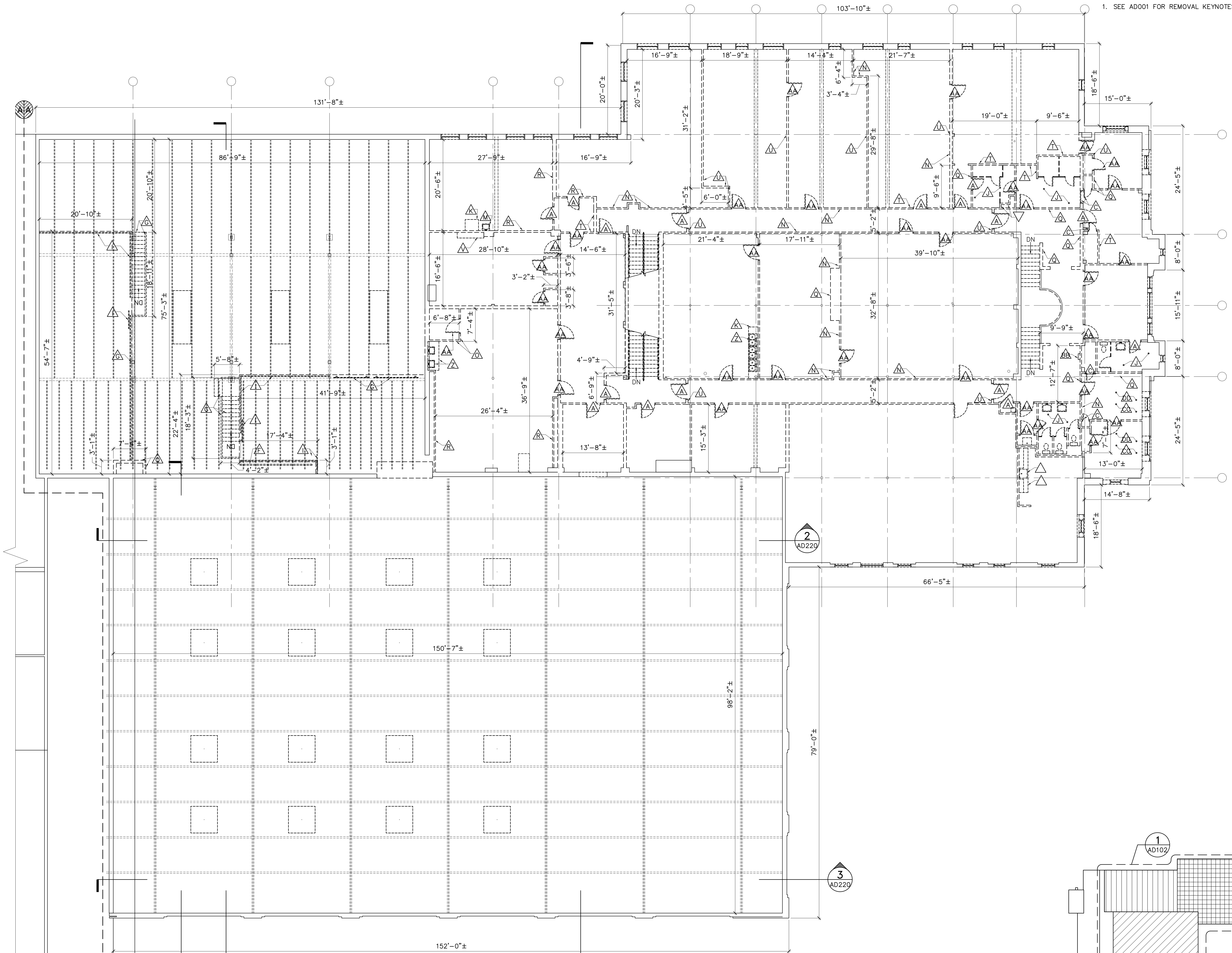
SECOND FLOOR  
REMOVALS  
PLAN

SCALE: AS NOTED

DATE: 02-26-16

DWG. **AD103**

SHEET: OF .



**1 SECOND FLOOR REMOVALS PLAN**  
 AD103 SCALE: 1/8"=1'-0"

