

DRAWING NOTES:

1. SEE AD001 FOR REMOVAL KEYNOTES.



35% SUBMISSION

DESIGNED BY: TGB
DRAWN BY: DEM
CHECKED BY: TGB
PROJECT: 21502.10

UNIVERSITY OF NEW ENGLAND
PORTLAND CAMPUS
STEVEN AVENUE ARMORY
716 STEVEN AVENUE
PORTLAND, MAINE 04103
1 (207) 265-0171

RENOVATIONS TO THE
STEVEN AVENUE ARMORY

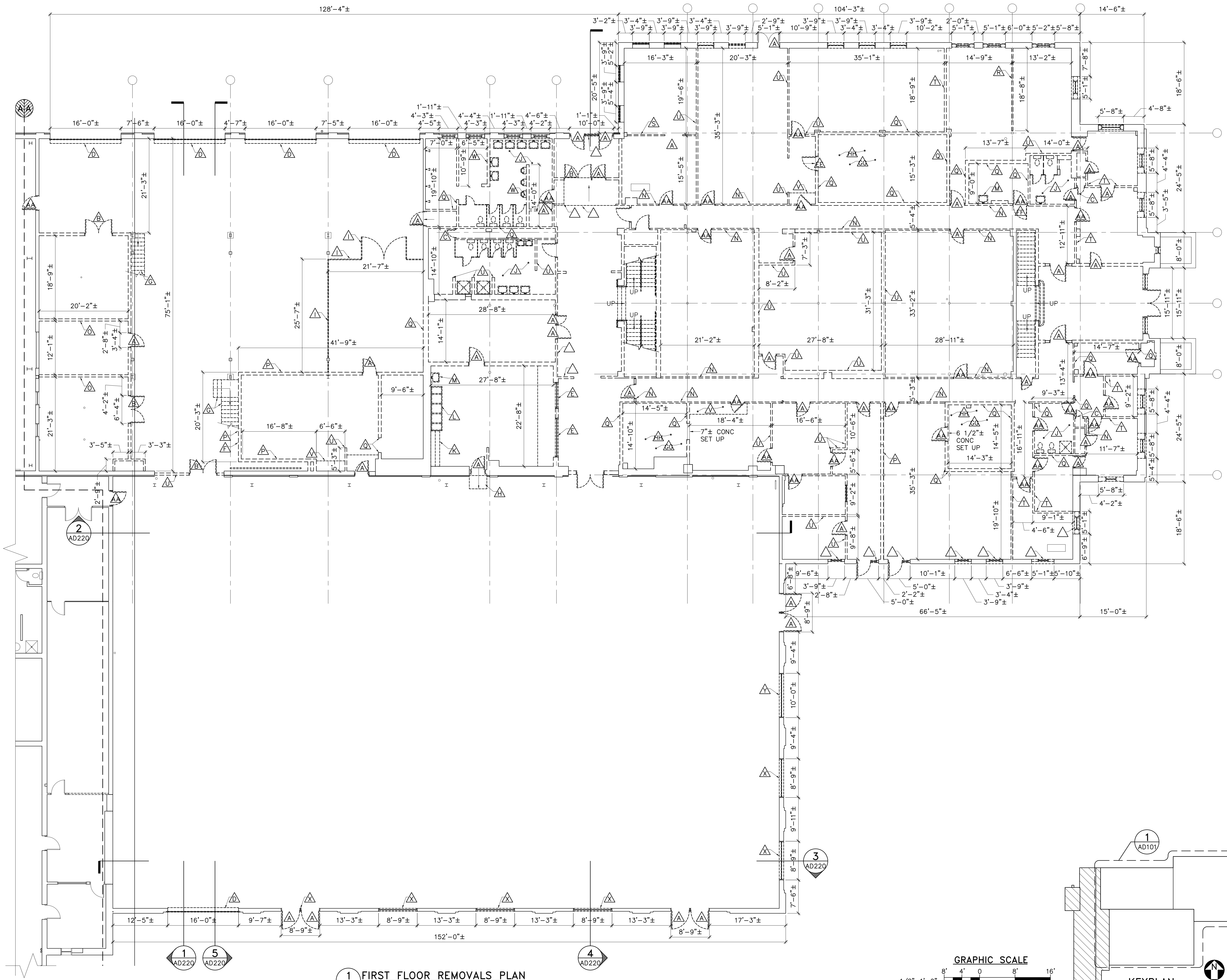
FIRST FLOOR
REMOVALS
PLAN

SCALE: AS NOTED

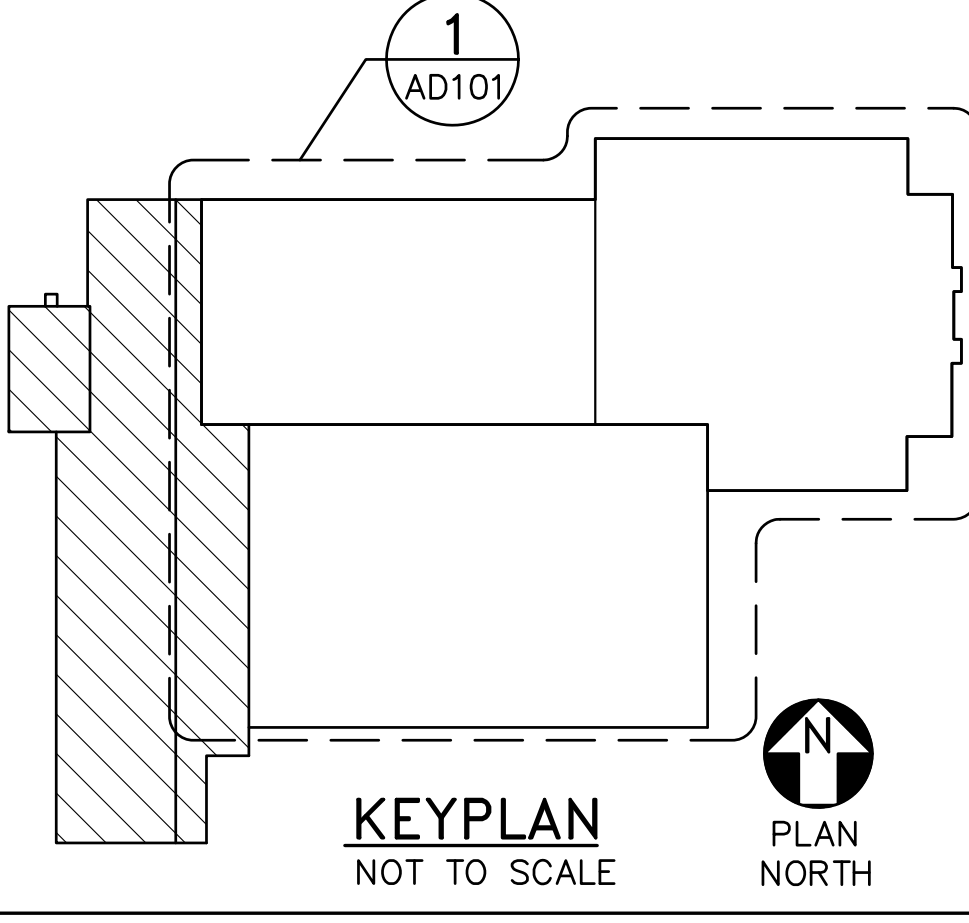
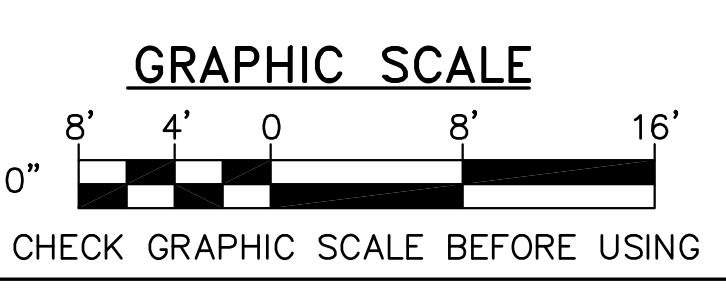
DATE: 02-26-16

DWG. AD101

SHEET: OF .



1 FIRST FLOOR REMOVALS PLAN
AD101 SCALE: 1/8"=1'-0"



26 Feb, 2016 - 1:11pm
C:\drive\21502.10-AD101.dwg