

**allied engineering, inc.**  
 FULL SERVICE CONSULTING ENGINEERS  
 STRUCTURAL • MECHANICAL • ELECTRICAL • ENVIRONMENTAL • CONSTRUCTION ADMINISTRATION  
 One Westbrook Common, Westbrook, Maine 04092-0004  
 Phone: 603.233.6313 • Fax: 603.233.6300  
 Email: [info@alliedeng.com](mailto:info@alliedeng.com) • [www.alliedeng.com](http://www.alliedeng.com)

REVISIONS

NUMBER	DATE	BY	DESCRIPTION

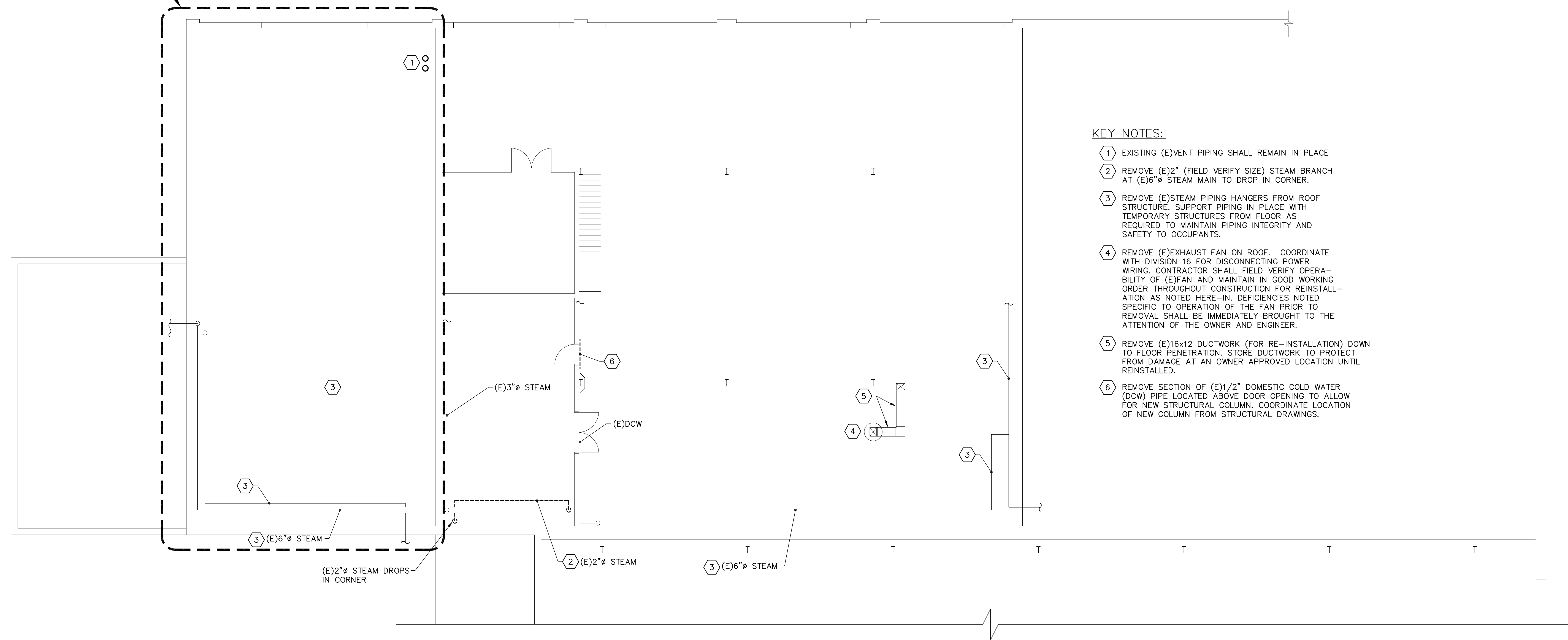
Date: APRIL 2, 2004  
 Drawn By: JJM  
 Checked By: WPF  
 Project Mgr: WPF  
 Project No: 02017  
 Cad File: 02017A.dwg  
 Graphic Scale: 0' = 1"  
 © copyright 2004 allied engineering, inc.

MECHANICAL DEMOLITION PLAN  
 VEHICLE MAINTENANCE

ARMORY RE-ROOFING  
 STEVENS AVE  
 PORTLAND, MAINE

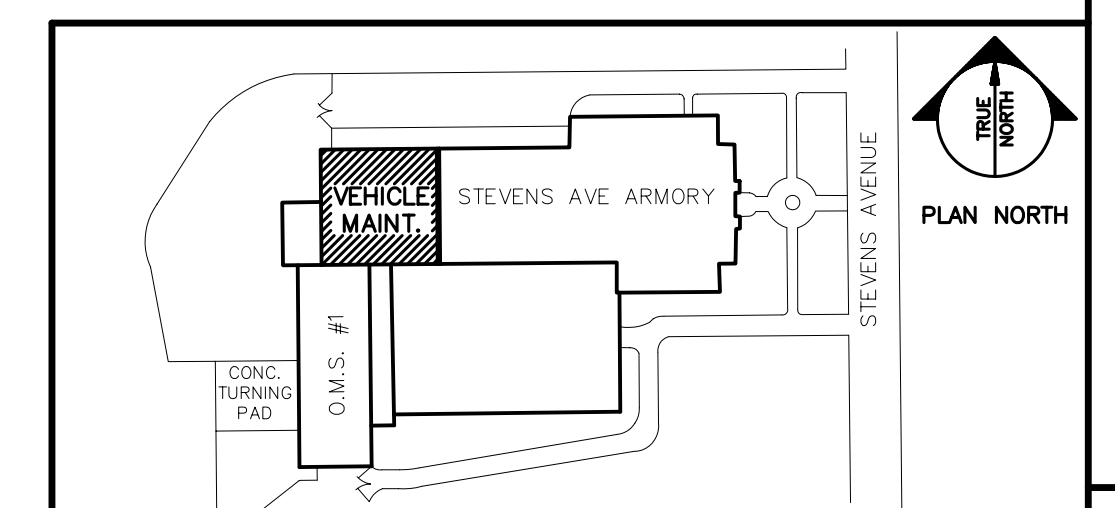
MD-100

ALTERNATE No.1



KEY NOTES:

- 1 EXISTING (E)VENT PIPING SHALL REMAIN IN PLACE
- 2 REMOVE (E)2" (FIELD VERIFY SIZE) STEAM BRANCH AT (E)6" STEAM MAIN TO DROP IN CORNER.
- 3 REMOVE (E)STEAM PIPING HANGERS FROM ROOF STRUCTURE. SUPPORT PIPING IN PLACE WITH TEMPORARY STRUCTURES FROM FLOOR AS REQUIRED TO MAINTAIN PIPING INTEGRITY AND SAFETY TO OCCUPANTS.
- 4 REMOVE (E)EXHAUST FAN ON ROOF. COORDINATE WITH DIVISION 16 FOR DISCONNECTING POWER WIRING. CONTRACTOR SHALL FIELD VERIFY OPERABILITY OF (E)FAN AND MAINTAIN IN GOOD WORKING ORDER THROUGHOUT CONSTRUCTION FOR REINSTALLATION AS NOTED HERE-IN. DEFICIENCIES NOTED SPECIFIC TO OPERATION OF THE FAN PRIOR TO REMOVAL SHALL BE IMMEDIATELY BROUGHT TO THE ATTENTION OF THE OWNER AND ENGINEER.
- 5 REMOVE (E)16x12 DUCTWORK (FOR RE-INSTALLATION) DOWN TO FLOOR PENETRATION. STORE DUCTWORK TO PROTECT FROM DAMAGE AT AN OWNER APPROVED LOCATION UNTIL REINSTALLED.
- 6 REMOVE SECTION OF (E)1/2" DOMESTIC COLD WATER (DCW) PIPE LOCATED ABOVE DOOR OPENING TO ALLOW FOR NEW STRUCTURAL COLUMN. COORDINATE LOCATION OF NEW COLUMN FROM STRUCTURAL DRAWINGS.



PLAN NORTH

A1 MECHANICAL PLAN

1/8" = 1'-0"

A9 KEYPLAN