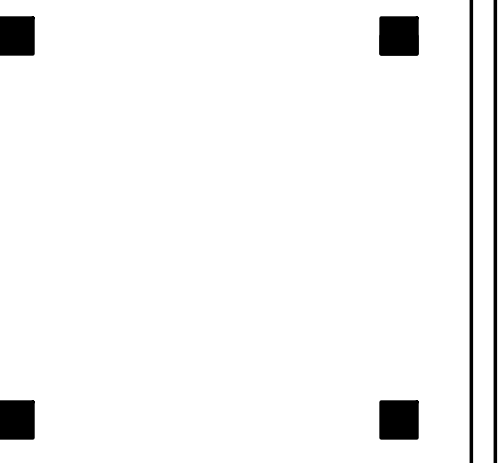


PORT CITY ARCHITECTURE

65 NEWBURY STREET  
PORTLAND, ME 04101  
207.761.9000  
info@portcityarch.com  
WWW.PORTCITYARCH.COM



CONSULTANTS



Site Design Associates  
23 Whitney Way  
Topsham, Maine 04086  
207-449-4275

REVISIONS

| No. | Description         | Date    |
|-----|---------------------|---------|
| 1   | Addendum #8         | 7/30/12 |
| 2   | Addendum #9         | 8/15/12 |
| 3   | Comp. Care Addition | 1/07/13 |

CONSTRUCTION DOCUMENTS

UNIVERSITY OF  
NEW ENGLAND  
PORTLAND, MAINE

PATIENT CARE  
CENTER  
INTERIOR-FIRE-EXIT

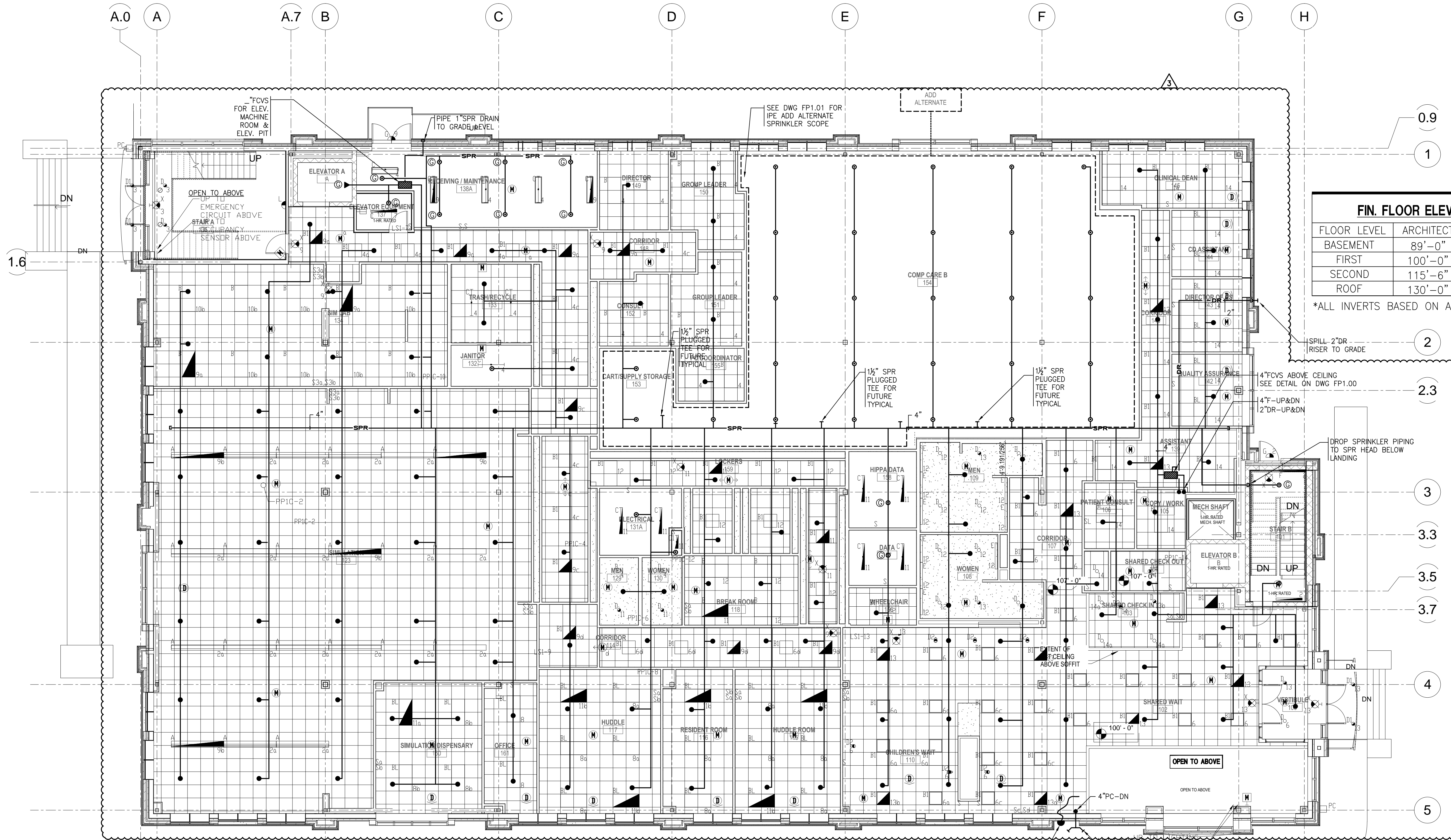
FIRE PROTECTION  
FIRST FLOOR  
PLAN

Project Number 12502  
Date July 16, 2012  
Drawn by SCW  
Checked by

F1.02

Scale 1/8" = 1'-0"

IF THIS SHEET IS NOT 24 X 36 IT IS A REDUCED SCALE PRINT - SCALE ACCORDINGLY



| FIN. FLOOR ELEVATIONS |           |         |
|-----------------------|-----------|---------|
| FLOOR LEVEL           | ARCHITECT | CIVIL   |
| BASEMENT              | 89'-0"    | 119'-0" |
| FIRST                 | 100'-0"   | 130'-0" |
| SECOND                | 115'-6"   | 145'-6" |
| ROOF                  | 130'-0"   | 160'-0" |

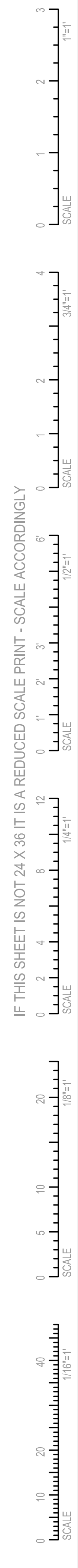
\*ALL INVERTS BASED ON ARCHITECT ELEVATIONS.

- NOTES
- 1 PROVIDE SPR HEAD GUARDS ON SPR HEADS IN ELEVATOR MACHINE ROOM, ELEVATOR PIT, ELECTRICAL ROOM, EMERGENCY POWER & IT ROOM.
  - 2 PROVIDE LOW POINT DRAIN AT ALL LOW SPOTS ON SPRINKLER PIPING.
  - 3 212°F SPR HEADS IN ELEVATOR MACHINE ROOM ELEVATOR SHAFT, ELECTRICAL ROOM, EMERGENCY POWER ROOM AND & IT ROOM.
  - 4 ALL SPRINKLER PIPING TO BE CONCEALED THROUGHOUT BUILDING EXCEPT FOR MECHANICAL SPACES.

1 FIRE PROTECTION FIRST FLOOR PLAN  
1/8" = 1'-0"



J:\2012\0212 UNE College of Dentistry, Maine\CAD-FIT DUT\APP\0212 - P000-P001-P002-P003-P004.dwg, By: ede, PLOTTED: Dec 31, 2012 - 3:08pm  
 IF THIS SHEET IS NOT 24 X 36 IT IS A REDUCED SCALE PRINT - SCALE ACCORDINGLY



**PLUMBING FIXTURE SCHEDULE**

| FIXTURE NUMBER | DESCRIPTION  | MANUFACTURER      | FIXTURE MODEL                | TYPE                                  | CABINET SIZE | SIZE                         | MANUFACTURER           | FITTING TYPE           | SUPPLY   | TRAP   | CARRIER              | H/C MTD. | REMARKS  |
|----------------|--|-------------------|------------------------------|---------------------------------------|--------------|------------------------------|------------------------|------------------------|--|--|----------------------|----------|--|
| P-1            | WATER CLOSET FLOOR MOUNTED (R/H)                                   | AMERICAN STANDARD | MADERA 3461.001              | FLOOR MOUNT SIPHON JET 1.28 GAL FLUSH |              | 1 1/2" TOP SPUD ELONGATED    | AMERICAN STANDARD      | 6065.121 SELECTRONIC   | IPS  | INTEGRAL   | N/A                  | N        | 1. AMERICAN STANDARD SEAT #5901.100 W/SS. CHECK HINGE.<br>2. SEE ARCH DWG'S FOR MOUNTING HEIGHT.   |
| P-1A           | WATER CLOSET FLOOR MOUNTED (R/H)                                   | AMERICAN STANDARD | MADERA 3461.001              | FLOOR MOUNT SIPHON JET 1.28 GAL FLUSH |              | 1 1/2" TOP SPUD ELONGATED    | AMERICAN STANDARD      | 6065.121 SELECTRONIC   | IPS  | INTEGRAL   | N/A                  | Y        | 1. AMERICAN STANDARD SEAT #5901.100 W/ SS. CHECK HINGE.<br>2. SEE ARCH DWG'S FOR MOUNTING HEIGHT.  |
| P-1B           | WATER CLOSET FLOOR MOUNTED (DUAL FLUSH)                            | AMERICAN STANDARD | MADERA 3461.001              | FLOOR MOUNT SIPHON JET 1.28 GAL FLUSH |              | 1 1/2" TOP SPUD ELONGATED    | SLOAN                  | WES-111                | IPS  | INTEGRAL   | N/A                  | Y        | 1. AMERICAN STANDARD SEAT #5901.100 W/ SS. CHECK HINGE.<br>2. SEE ARCH DWG'S FOR MOUNTING HEIGHT.  |
| P-1C           | WATER CLOSET FLOOR MOUNTED (DUAL FLUSH)                            | AMERICAN STANDARD | MADERA 3461.001              | FLOOR MOUNT SIPHON JET 1.28 GAL FLUSH |              | 1 1/2" TOP SPUD ELONGATED    | SLOAN                  | WES-111                | IPS  | INTEGRAL   | N/A                  | N        | 1. AMERICAN STANDARD SEAT #5901.100 W/ SS. CHECK HINGE.<br>2. SEE ARCH DWG'S FOR MOUNTING HEIGHT.  |
| P-2A           | URINAL (R/H)   | AMERICAN STANDARD | WASHBROOK 6590.001           | WALL HUNG .5 GAL FLUSH                |              | 3/4" TOP SPUD                | AMERICAN STANDARD      | 6063.051 SELECTRONIC   | IPS  | INTEGRAL   | ZURN CARRIER TO SUIT | Y        | 1. SEE ARCH DWG'S FOR MOUNTING HEIGHT.   |
| P-3A           | PUBLIC LAVATORY COUNTER (R/H)                                      | AMERICAN STANDARD | OVALYN 0496.221              | UNDERMOUNT OVAL COUNTER DRILL         |              | 19"x16"                      | AMERICAN STANDARD      | 7055.205 SELECTRONIC   | McGUIRE HEAVY DUTY HST02LK-IPS LOOSE KEY STOPS & STAINLESS STEEL BRAIDED SUPPLY RISERS | McGUIRE #8902-C-1 1/4"x1 1/2" I.P.S. P-TRAP W/McGUIRE #HD 155WC-C OFFSET GRID STRAINER-ALL CHROME & HEAVY DUTY TYPE                | N/A                  | Y        | 1. TRUBRO MFG KIT ON CW, HW, & WASTE PIPING<br>2. SEE ARCH DWG'S FOR MOUNTING HEIGHT.  |
| P-3B           | PUBLIC LAVATORY WALL HUNG (R/H)                                    | AMERICAN STANDARD | LUCERNE 0355.012             | WALL HUNG 4"OC                        |              | 20"x18"                      | AMERICAN STANDARD      | 7055.205 SELECTRONIC   | McGUIRE HEAVY DUTY HST02LK-IPS LOOSE KEY STOPS & STAINLESS STEEL BRAIDED SUPPLY RISERS | McGUIRE #8902-C-1 1/4"x1 1/2" I.P.S. P-TRAP W/McGUIRE #HD 155WC-C OFFSET GRID STRAINER-ALL CHROME & HEAVY DUTY TYPE                | ZURN CARRIER TO SUIT | Y        | 1. PROVIDE TRUBRO HAND-LAY INSULATION KIT.<br>2. WITH CONCEALED ARM CARRIER<br>3. SEE ARCH DWG'S FOR MOUNTING HEIGHT.<br>4. INCLUDE DECK PLATE A/S 605P 400                    |
| P-4            | MOP BASIN  | STERN WILLIAMS    | SB-902                       | TERRAZZO                              |              | 24"x24"x12"                  | AMERICAN STANDARD      | HERITAGE 8354.112 CP   | INTEGRAL SUPPLY & STOPS  | 2"W/3"W&T  | N/A                  | N        | 1. WITH PROTECTOR CAPS, HOSE & WALL HOOK.  |
| P-5            | ELECTRIC WATER FOUNTAIN (BI-LEVEL)                                 | ELKAY             | EDFBM 117C                   | ST.ST. BI-LEVEL                       |              | N/A                          | N/A                    | N/A                    | N/A  | McGUIRE HEAVY DUTY 1 1/2"CAST BRASS W/CO PLUG  | AS REQUIRED          | Y        | 1. WEAR WARRANTY ON CHILLER<br>2. SEE ARCH DWG'S FOR MOUNTING HEIGHT<br>3. PROVIDE REMOTE WATER CHILLER ABOVE CEILING-SEE PLAN FOR LOCATION                                    |
| P-6            | SPECIALTY SINK (WB)  | POLARWARE         | # 201260 20 GUAGE TYPE 304   | UNDERMOUNT ROUND 3-HOLE/4"OC          | 18"          | 12"9-6" DEEP                 | DELTA                  | 141-DST                | McGUIRE HEAVY DUTY HST02LK-IPS LOOSE KEY STOPS & STAINLESS STEEL BRAIDED SUPPLY RISERS | McGUIRE #151-A HEAVY DUTY STAINLESS STEEL BASKET STRAINER & TAILPIECE - PROVIDE McGUIRE #C8912CECO CAST BRASS P-TRAP               | N/A                  | N        | 1. PROVIDE SS STRAINER<br>2. WITH LAMINAR - FLOW   |
| P-6A           | OPERATORY SINK (WB)  | ELKAY             | LUSTERTONE 18 GUAGE TYPE 304 | UNDERMOUNT SQUARE 3-HOLE/4"OC         | 18"          | ELUH-129 14"x12"x7"          | DELTA                  | 141-DST                | McGUIRE HEAVY DUTY HST02LK-IPS LOOSE KEY STOPS & STAINLESS STEEL BRAIDED SUPPLY RISERS | McGUIRE #152N STAINLESS STEEL GRID STRAINER - PROVIDE HEAVY DUTY TAILPIECE & McGUIRE #C8912CECO-CAST BRASS P-TRAP                  | N/A                  | N        | 1. PROVIDE SS STRAINER<br>2. WITH LAMINAR - FLOW   |
| P-7            | HAND WASHING SINK SIMULATION LAB WITH PLASTER TRAP (WB)            | ELKAY             | LUSTERTONE 18 GUAGE TYPE 304 | COUNTER 3-HOLE/4"OC                   | 24"          | DLR-1919 19"x19"x10"         | AMERICAN STANDARD      | HERITAGE 7400.172HLL15 | McGUIRE HEAVY DUTY HST02LK-IPS LOOSE KEY STOPS & STAINLESS STEEL BRAIDED SUPPLY RISERS | McGUIRE #152N STAINLESS STEEL GRID STRAINER - PROVIDE HEAVY DUTY TAILPIECE & McGUIRE #C8912CECO-CAST BRASS P-TRAP                  | N/A                  | N        | 1. PROVIDE GRID STRAINER<br>2. PROVIDE PLASTER TRAP<br>3. BUFFALO TRAP-EZE DISPOSAL #62100<br>4. PROVIDE LAMINAR - FLOW  |
| P-7A           | STAINLESS STEEL SINK W/ EYEWASH (WB)                               | ELKAY             | LUSTERTONE 18 GUAGE TYPE 304 | COUNTER 3-HOLE/8"OC                   | 24"          | DLR-1919 19"x19"x10"         | SPEAKMAN               | SEF-1800-8-TW-LF-6WH   | McGUIRE HEAVY DUTY HST02LK-IPS LOOSE KEY STOPS & STAINLESS STEEL BRAIDED SUPPLY RISERS | McGUIRE #152N STAINLESS STEEL GRID STRAINER - PROVIDE HEAVY DUTY TAILPIECE & McGUIRE #C8912CECO-CAST BRASS P-TRAP                  | N/A                  | N        | 1. PROVIDE GRID STRAINER - STAINLESS STEEL<br>2. PROVIDE SAFETY SIGNAGE AS REQUIRED<br>3. COMPLETE WITH TMV UNDER SINK<br>4. PROVIDE LAMINAR - FLOW                            |
| P-7B           | STAINLESS STEEL LOUNGE SINK (WB)                                   | ELKAY             | LUSTERTONE 18 GUAGE TYPE 304 | COUNTER 4-HOLE/8"OC                   | 24"          | DLR-1919 19"x19"x10"         | AMERICAN STANDARD      | RELIANT 4205.104       | LOOSE KEY STOPS & STAINLESS STEEL BRAIDED SUPPLY RISERS                                | McGUIRE #152N STAINLESS STEEL GRID STRAINER - PROVIDE HEAVY DUTY TAILPIECE & McGUIRE #C8912CECO-CAST BRASS P-TRAP                  | N/A                  | N        | 1. PROVIDE GRID STRAINER<br>2. ISE HW DISPENSER-H70SS  |
| P-7C           | STAINLESS STEEL SINK W/ EYEWASH & PLASTER TRAP (WB)                | ELKAY             | LUSTERTONE 18 GUAGE TYPE 304 | COUNTER 4-HOLE/8"OC                   | 24"          | DLR-1919 19"x19"x10"         | SPEAKMAN               | SEF-1800-8-TW-LF-6WH   | LOOSE KEY STOPS & STAINLESS STEEL BRAIDED SUPPLY RISERS                                | McGUIRE #152N STAINLESS STEEL GRID STRAINER - PROVIDE HEAVY DUTY TAILPIECE & McGUIRE #C8912CECO-CAST BRASS P-TRAP                  | N/A                  | N        | 1. PROVIDE GRID STRAINER - STAINLESS STEEL<br>2. PROVIDE SAFETY SIGNAGE AS REQUIRED<br>3. COMPLETE WITH TMV UNDER SINK<br>4. PROVIDE PLASTER TRAP<br>5. PROVIDE LAMINAR - FLOW |
| P-7D           | STAINLESS STEEL DOUBLE BOWL SINK (WB)                              | ELKAY             | LUSTERTONE 18 GUAGE TYPE 304 | UNDER MOUNT 3-HOLE/8"OC DOUBLE BOWL   | 36"          | ELUH-3116 31"x16"x7 1/2"     | CHICAGO                | -                      | McGUIRE HEAVY DUTY HST02LK-IPS LOOSE KEY STOPS & STAINLESS STEEL BRAIDED SUPPLY RISERS | McGUIRE #1151AWC STAINLESS STEEL STRAINER W/OFFSET TAILPIECE. PROVIDE McGUIRE #8902-C-1 1/4"x1 1/2" IPS P-TRAP HEAVY DUTY & CHROME | N/A                  | N        | 1. PROVIDE GRID STRAINER   |
| P-8            | CUSTOM STAINLESS STEEL SINK RM 222, 225 (WB)                       | FBO               | -                            | UNDER MOUNT SINGLE HOLE               | 24"          | EFRU191610 AVADO 21"x16"x10" | CHICAGO                | 930-GN8 BVB-E-7-317 CP | McGUIRE HEAVY DUTY HST02LK-IPS LOOSE KEY STOPS & STAINLESS STEEL BRAIDED SUPPLY RISERS | McGUIRE #152N STAINLESS STEEL GRID STRAINER - PROVIDE HEAVY DUTY TAILPIECE & McGUIRE #C8912CECO-CAST BRASS P-TRAP                  | N/A                  | N        | 1. PROVIDE GRID STRAINER<br>2. RM 222 REQUIRES (2)TRAPS  |
| P-8A           | CUSTOM STAINLESS STEEL SINK RM 134 & RM 223 WITH PLASTER TRAP (WB) | ELKAY             | LUSTERTONE 18 GUAGE TYPE 304 | UNDER MOUNT SINGLE HOLE               | 24"          | EFRU191610 AVADO 21"x16"x10" | CHICAGO                | 930-GN8 BVB-E-7-317 CP | McGUIRE HEAVY DUTY HST02LK-IPS LOOSE KEY STOPS & STAINLESS STEEL BRAIDED SUPPLY RISERS | McGUIRE #1151AWC STAINLESS STEEL STRAINER W/OFFSET TAILPIECE. PROVIDE McGUIRE #8902-C-1 1/4"x1 1/2" IPS P-TRAP HEAVY DUTY & CHROME | N/A                  | N        | 1. PROVIDE GRID STRAINER<br>2. PROVIDE SAFETY SIGNAGE AS REQUIRED<br>3. COMPLETE WITH TMV UNDER SINK<br>4. BUFFALO TRAP-EZE DISPOSAL #62100<br>5. PROVIDE LAMINAR - FLOW       |
| P-8B           | CUSTOM STAINLESS STEEL SINK RM 222 / RM 134 (WB)                   | FBO               | -                            | UNDER MOUNT SINGLE HOLE               | 24"          | EFRU191610 AVADO 21"x16"x10" | SPEAKMAN               | SEF-1800-8-TW-LF-6WH   | McGUIRE HEAVY DUTY HST02LK-IPS LOOSE KEY STOPS & STAINLESS STEEL BRAIDED SUPPLY RISERS | McGUIRE #152N STAINLESS STEEL GRID STRAINER - PROVIDE HEAVY DUTY TAILPIECE & McGUIRE #C8912CECO-CAST BRASS P-TRAP                  | N/A                  | N        | 1. PROVIDE GRID STRAINER - STAINLESS STEEL<br>2. PROVIDE SAFETY SIGNAGE AS REQUIRED<br>3. COMPLETE WITH TMV UNDER SINK<br>4. PROVIDE PLASTER TRAP<br>5. PROVIDE LAMINAR - FLOW |
| P-9            | EMERGENCY EYEWASH (WB)   | SPEAKMAN          | SE-400                       | WALL HUNG                             |              | N/A                          | N/A                    | N/A                    | N/A  | McGUIRE #1151AWC STAINLESS STEEL STRAINER W/OFFSET TAILPIECE. PROVIDE McGUIRE #8902-C-1 1/4"x1 1/2" IPS P-TRAP HEAVY DUTY & CHROME | N/A                  | Y        | 1. PROVIDE SAFETY SIGNAGE AS REQUIRED<br>2. COMPLETE W/ TMV ASSEMBLY POWERS ES-150 ABOVE CEILING-SEE SCHEDULE BELOW  |
| P-10           | SHOP SINK  | FIAT              | FLOOR MTD                    | FL-7                                  |              | -                            | AMERICAN STANDARD      | 2475.500 COLONY SOFT   | McGUIRE HEAVY DUTY HST02LK-IPS LOOSE KEY STOPS & STAINLESS STEEL BRAIDED SUPPLY RISERS | McGUIRE #1151AWC STAINLESS STEEL STRAINER W/OFFSET TAILPIECE. PROVIDE McGUIRE #8902-C-1 1/4"x1 1/2" IPS P-TRAP HEAVY DUTY & CHROME | N/A                  | N        |  |
| P-11           | CUSTOM STAINLESS STEEL SINK W/ EYEWASH & PLASTER TRAP (WB)         | FBO               | -                            | UNDER MOUNT SINGLE HOLE               | 24"          | EFRU191610 AVADO 21"x16"x10" | SPEAKMAN               | SEF-1800-8-TW-LF-6WH   | LOOSE KEY STOPS & STAINLESS STEEL BRAIDED SUPPLY RISERS                                | McGUIRE #152N STAINLESS STEEL GRID STRAINER - PROVIDE HEAVY DUTY TAILPIECE & McGUIRE #C8912CECO-CAST BRASS P-TRAP                  | N/A                  | N        | 1. PROVIDE GRID STRAINER - STAINLESS STEEL<br>2. PROVIDE SAFETY SIGNAGE AS REQUIRED<br>3. COMPLETE WITH TMV UNDER SINK<br>4. PROVIDE PLASTER TRAP<br>5. PROVIDE LAMINAR - FLOW |
| P-11A          | CUSTOM STAINLESS STEEL SINK W/ PLASTER TRAP (WB)                   | FBO               | -                            | UNDER MOUNT SINGLE HOLE               | 24"          | DELTA                        | 141-DST                | 141-DST                | McGUIRE HEAVY DUTY HST02LK-IPS LOOSE KEY STOPS & STAINLESS STEEL BRAIDED SUPPLY RISERS | McGUIRE #152N STAINLESS STEEL GRID STRAINER - PROVIDE HEAVY DUTY TAILPIECE & McGUIRE #C8912CECO-CAST BRASS P-TRAP                  | N/A                  | N        | 1. PROVIDE SS STRAINER<br>2. WITH LAMINAR - FLOW   |
| P-11B          | CUSTOM STAINLESS STEEL SINK WITH PLASTER TRAP (WB)                 | FBO               | -                            | UNDER MOUNT SINGLE HOLE               | 24"          | CHICAGO                      | 930-GN8 BVB-E-7-317 CP | 930-GN8 BVB-E-7-317 CP | McGUIRE HEAVY DUTY HST02LK-IPS LOOSE KEY STOPS & STAINLESS STEEL BRAIDED SUPPLY RISERS | McGUIRE #1151AWC STAINLESS STEEL STRAINER W/OFFSET TAILPIECE. PROVIDE McGUIRE #8902-C-1 1/4"x1 1/2" IPS P-TRAP HEAVY DUTY & CHROME | N/A                  | N        | 1. PROVIDE GRID STRAINER<br>2. PROVIDE PLASTER TRAP<br>3. BUFFALO TRAP-EZE DISPOSAL #62100<br>4. DRAIN BOARDS BY ARCHITECT   |

(WB) = WRIST BLADES (R/H) = INFRARED/HAND FREE (H) = HANDICAP

**ELEVATOR PIT SUMP PUMP**

| MANUFACTURE                | MODEL | PIPE OUTLET | COMMENTS  |
|----------------------------|-------|-------------|---|
| STANCOR/OIL MINDER II PUMP | SE-50 | 2"          | 1. PROVIDE CAST IRON COVER COORDINATE SIZE WITH ARCHITECTURAL AND STRUCTURAL DRAWINGS.<br>2. REFER TO DRAWINGS FOR LOCATION OF CONTROL PANELS AND J-BOX.<br>3. PROVIDE ALARM CONNECTION TO GAS SYSTEM.<br>4. PROVIDE CHECK VALVE ON DISCHARGE PIPING.<br>5. PIT SIZE TO BE 24"x24"x24". |

**PRV ASSEMBLY'S SCHEDULE**

| MFG.  | SERIES | CRITERIA     | STYLE                                       | REMARKS   | LOCATION                                 |
|-------|--------|--------------|---|---|--|
| WATTS | 263-AG | MINIMUM FLOW | WITH BYPASS AND PRESSURE GAGES (SEE DETAIL) | REFER TO EQUIPMENT MFG REQUIREMENTS FOR FINAL PRESSURE SETTINGS | STERILIZER, WASHER, COFFEE MACHINE, ETC. |

**ROOF DRAIN SCHEDULE**

| SYMBOL | TYPE | MFG. | MODEL       | OUTLET | STRAINER | REMARKS | LOCATIONS |
|--------|------|------|-------------|--------|----------|---------|-----------|
| RD     | RD   | ZURN | Z-100-DP-EA | VARIES | YES      |         | MAIN ROOF |

**SEWAGE EJECTOR AND PUMP SCHEDULE**

| SYMBOL | NAME           | GPM | HEAD TDH | ELECTRICAL |    |    |    | RPM  | MANUFACTURER & MODEL | REMARKS           |
|--------|----------------|-----|----------|------------|----|----|----|------|----------------------|-------------------|
|        |                |     |          | V          | PH | HZ | HP |      |                      |                   |
| SE-1   | SEWAGE EJECTOR | 30  | 20       | 208        | 3ø | 60 | 3  | 1750 | WEIL PUMP            | SEE SPECIFICATION |

**SCHEDULE OF FLOOR DRAIN**

| TYPE | LOCATION                    | MANUFACTURER | MODEL NO                                       |
|------|-----------------------------|--------------|--|
| FD-A | TOILET ROOM                 | ZURN         | 1. Z-N-415-6S<br>2. PROVIDE TRAP PRIMER INSERT |
| FD-B | MECHANICAL SOILED/RECEIVING | ZURN         | 1. Z-514-5B-P<br>2. PROVIDE TRAP PRIMER INSERT |
| ES-1 | SEE PLAN                    | ZURN         | ZN-1910-KC-2-23                                |
| ES-2 | SEE PLAN                    | ZURN         | ZN-1910-2-23                                   |

**SCHEDULE OF BACKFLOW PREVENTERS**

| DESIGNATION | LOCATION                           | MANUFACTURER | MODEL NUMBER    | SIZE           |
|-------------|------------------------------------|--------------|-----------------|----------------|
| BFP-1       | MECHANICAL ROOM MAIN WATER SERVICE | WILKINS      | MODEL # 975XL-S | 4"             |
| BFP-2       | DECONTAMINATION ROOM               | WILKINS      | MODEL # 975XL-S | 2" (2)REQUIRED |
| BFP-3       | MECHANICAL ROOM HVAC               | WILKINS      | MODEL # 975XL-S | 1"             |
| BFP-4       | MECHANICAL ROOM DENTAL             | WILKINS      | MODEL # 975XL-S | 3/4"           |
| BFP-5       | JAN CLOSET 1ST FLOOR               | WILKINS      | MODEL # 975XL-S | 3/4"           |

**PLUMBING LEGEND**

| SYMBOL   | ABBR.  | DESCRIPTION                         |
|----------|--------|-------------------------------------|
| — S or W | S or W | SOIL or WASTE PIPING                |
| — S or W | S or W | SOIL or WASTE PIPING (BURIED)       |
| — V      | V      | VENT PIPING                         |
| — V      | V      | VENT PIPING (UNDERGROUND/SLAB)      |
| — CW     | CW     | DOMESTIC COLD WATER PIPING          |
| — HW     | HW     | DOMESTIC HOT WATER PIPING           |
| — HWC    | HWC    | DOMESTIC HOT WATER CIRCULATION      |
| — COND   | COND   | CONDUCTOR PIPING                    |
| — COND   | COND   | CONDUCTOR PIPING (UNDERGROUND/SLAB) |
| — NDCW   | NDCW   | NON-DOMESTIC COLD WATER PIPING      |
| — NDHW   | NDHW   | NON-DOMESTIC HOT WATER PIPING       |
| — DA     | DA     | DENTAL AIR PIPING                   |
| — DV     | DV     | DENTAL VACUUM PIPING                |
| — DAI    | DAI    | DENTAL AIR INTAKE                   |
| — DVEX   | DVEX   | DENTAL VACUUM EXHAUST               |
| — VCO    | VCO    | DENTAL VACUUM FLOOR CLEANOUT        |
| — CA     | CA     | COMPRESSED PIPING                   |
| — BV     | BV     | BALL VALVE                          |
| — NGV    | NGV    | NATURAL GAS VALVE                   |
| — G      | G      | NATURAL GAS PIPING                  |
| — W&T    | W&T    | WASTE & TRAP                        |
| — FCO    | FCO    | FLUSH FLOOR CLEANOUT                |
| — FD     | FD     | FLOOR DRAIN                         |
| — CO     | CO     | LINE OR END CLEANOUT                |
| — PC     | PC     | PIPE CAP                            |
| — PC     | PC     | PIPE CONTINUATION                   |
| — PC     | PC     | PIPE UP THRU SLAB OF FLOOR ABOVE    |
| — PC     | PC     | PIPE DOWN THRU FLOOR SHOWN          |
| — PC     | PC     | PIPE DROP                           |
| — PC     | PC     | PIPE RISE                           |
| — BFP    | BFP    | BACKFLOW PREVENTER                  |
| — ROS    | ROS    | REVERSE OSMOSIS WATER SUPPLY        |
| — IW     | IW     | INDIRECT WASTE                      |
| — FM     | FM     | FORCE MAIN                          |
| — HB     | HB     | HOSE BIBB                           |
| — CFH    | CFH    | CUBIC FEET/HOUR                     |
| — RTV    | RTV    | ROOF TOP UNIT                       |
| — RTV    | RTV    | VENT THRU ROOF                      |
| — WH     | WH     | WALL HYDRANT                        |
| — W&V    | W&V    | WASTE & VENT PIPING                 |
| — SS     | SS     | SOIL STACK                          |
| — WS     | WS     | WASTE STACK                         |
| — VS     | VS     | VENT STACK                          |
| — CWR    | CWR    | COLD WATER RISER                    |
| — HWR    | HWR    | HOT WATER RISER                     |
| — FBO    | FBO    | FURNISHED BY OWNER                  |
| — SK     | SK     | SINK                                |
| — VF     | VF     | VERIFY IN FIELD                     |
| — NTS    | NTS    | NOT TO SCALE                        |

**TRIM SCHEDULE**

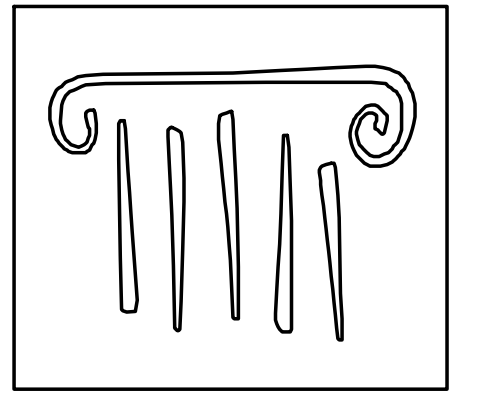
| T-1 | COMPRESSED AIR TURRET & QUICK DISCONNECT | CHICAGO | 937CH LESS E7 TIP-PROVIDE 986 WALL FLANGE. PROVIDE 3/8" x 1/2" CP BUSHING. PROVIDE NEVIN INDEXED FOR COMPRESSED AIR. PROVIDE NEVIN 208RF Q/D 1/4" FEMALE NPSF THREAD. |
|-----|--|---------|---|
| T-2 | MODEL TRIMMER CW VALVE                   | NEVIN   | MODEL # 20800 1/2 FIP X 3/8" COMPRESSION  |

**WALL HYDRANT**

| MANUFACTURE | MODEL  | COMMENTS   |
|-------------|--------|--|
| ZURN        | Z-1310 | 1. AUTOMATIC DRAIN - W/ FROST PROOF - W/ POLISHED STAINLESS STEEL FACE<br>2. PROVIDE REMOVABLE LOOSE KEY |

**EMERGENCY EYEWASH TEPID MIXING VALVE**

| MANUFACTURER | SPECIFICATION                       | LOCATION         | REMARKS   |
|--------------|-------------------------------------|------------------|---|
| POWERS EMW#1 | ES-150 SINGLE UNIT 3/4"x 3/4"x 3/4" | REFER TO DRAWING | 1. PIPED TO SINGLE EYEWASH STATION<br>2. FINAL DELIVERY TEMP TO BE 80°F |



**PORT CITY ARCHITECTURE**

65 NEWBURY STREET  
PORTLAND, ME 04101  
207.761.9000  
info@portcityarch.com  
WWW.PORTCITYARCH.COM

**CONSULTANTS**



Site Design Associates  
23 Whitney Way  
Topsham, Maine 04086  
207-449-4275

**REVISIONS**

| No. | Description         | Date    |
|-----|---------------------|---------|
| 1   | Addendum #8         | 7/20/12 |
| 2   | Addendum #9         | 8/26/12 |
| 3   | Comp. Care Addition | 3/07/13 |

**CONSTRUCTION DOCUMENTS**

**UNIVERSITY OF NEW ENGLAND PORTLAND, MAINE**

**PATIENT CARE CENTER INTERIOR FIT-OUT**

PLUMBING LEGEND & SCHEDULE PLAN

Project Number 12502  
Date July 16, 2012  
Drawn by CCSV  
Checked by SPQ

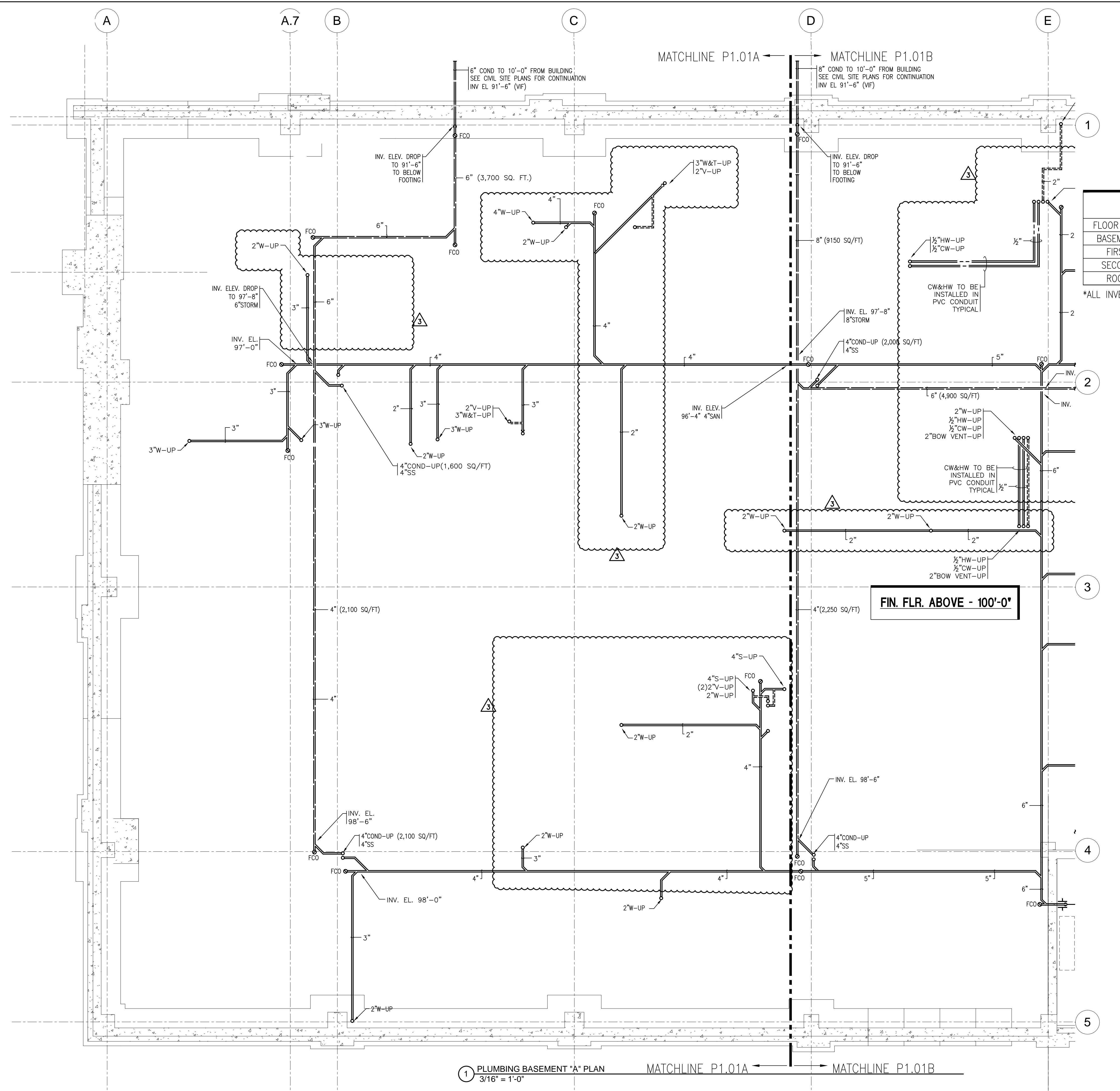
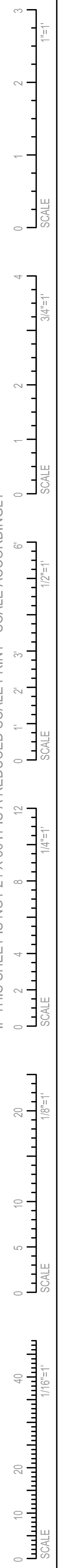
**P0.00**

Scale NTS



J:\2012\0212 UNE College of Dentistry, Maine\CAD-FIT OUT\PFPA\0212 - P1.01A.dwg, By: ede, PLOTTED: Dec 31, 2012 - 3:11pm

IF THIS SHEET IS NOT 24 X 36 IT IS A REDUCED SCALE PRINT - SCALE ACCORDINGLY

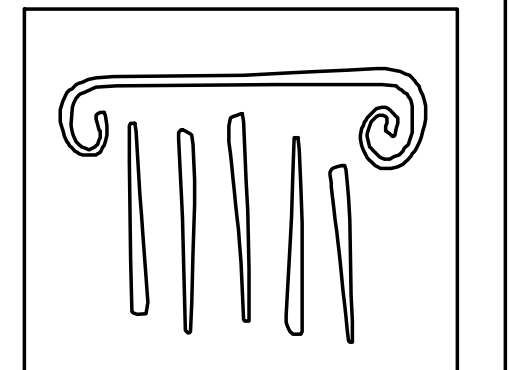
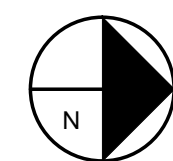


| FIN. FLOOR ELEVATIONS |           |         |
|-----------------------|-----------|---------|
| FLOOR LEVEL           | ARCHITECT | CIVIL   |
| BASEMENT              | 89'-0"    | 119'-0" |
| FIRST                 | 100'-0"   | 130'-0" |
| SECOND                | 115'-6"   | 145'-6" |
| ROOF                  | 130'-0"   | 160'-0" |

\*ALL INVERTS BASED ON ARCHITECT ELEVATIONS.

FIN. FLR. ABOVE - 100'-0"

1 PLUMBING BASEMENT "A" PLAN  
3/16" = 1'-0"



**PORT CITY ARCHITECTURE**  
65 NEWBURY STREET  
PORTLAND, ME 04101  
207.761.9000  
info@portcityarch.com  
WWW.PORTCITYARCH.COM

CONSULTANTS



Site Design Associates  
23 Whitney Way  
Topsham, Maine 04086  
207-449-4275

REVISIONS

| No. | Description         | Date    |
|-----|---------------------|---------|
| 1   | Addendum #8         | 7/30/12 |
| 2   | Addendum #9         | 8/16/12 |
| 3   | Comp. Care Addition | 1/07/13 |

CONSTRUCTION DOCUMENTS

**UNIVERSITY OF NEW ENGLAND**  
PORTLAND, MAINE

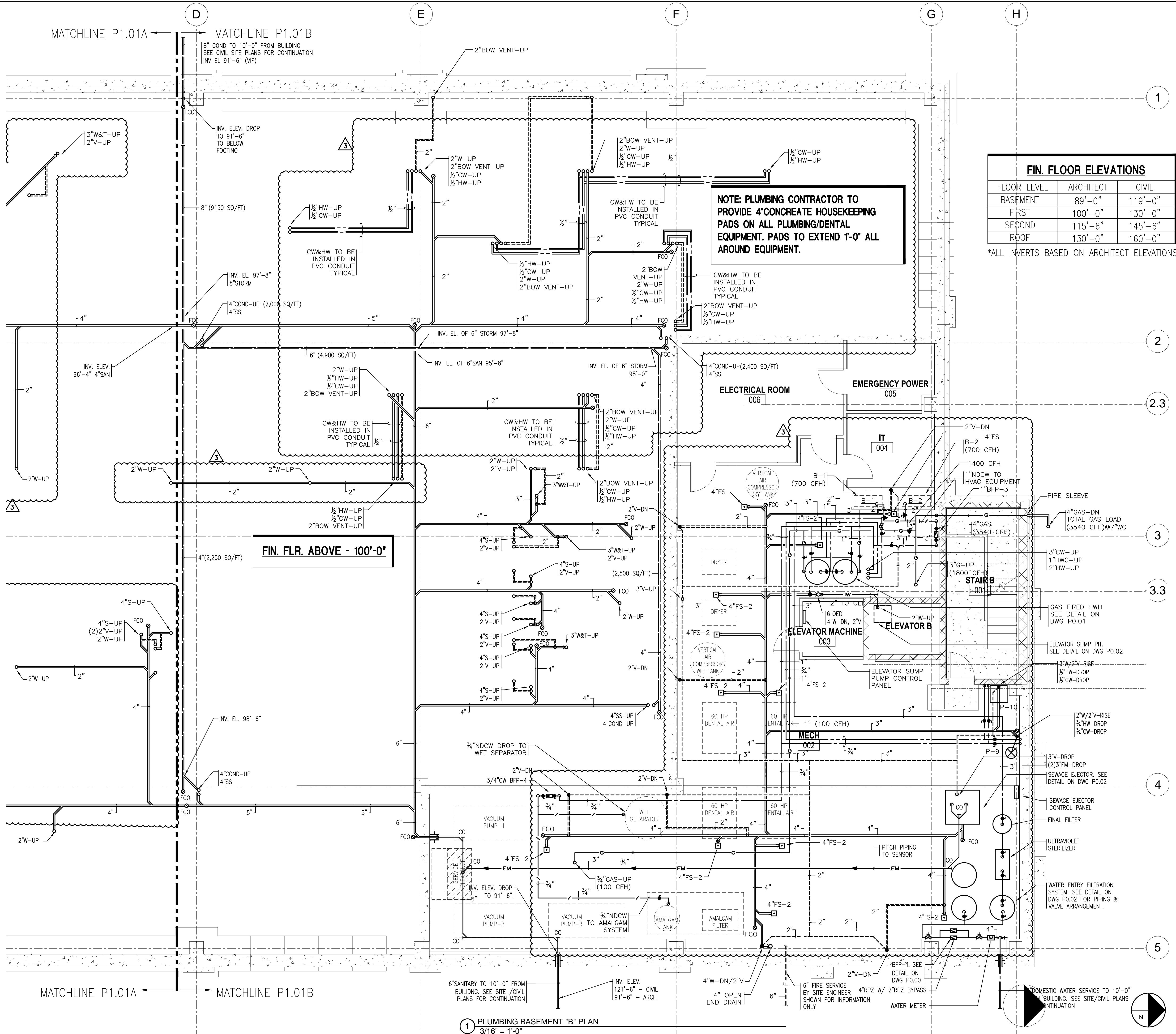
**PATIENT CARE CENTER**  
INTERIOR FIT-OUT

**PLUMBING BASEMENT FLOOR "A" PLAN**

Project Number **12502**  
Date **July 16, 2012**  
Drawn by **SCW/CCSV**  
Checked by **SPQ**

**P1.01A**

Scale 3/16" = 1'-0"

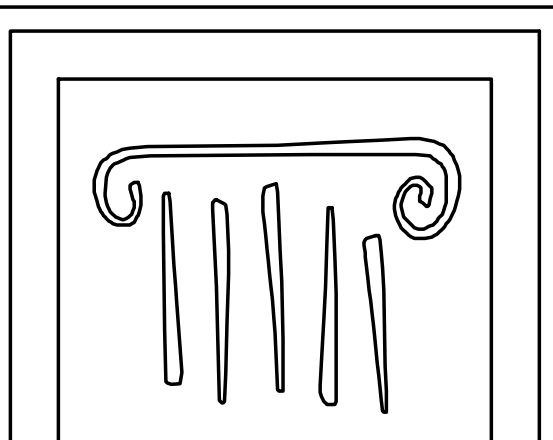
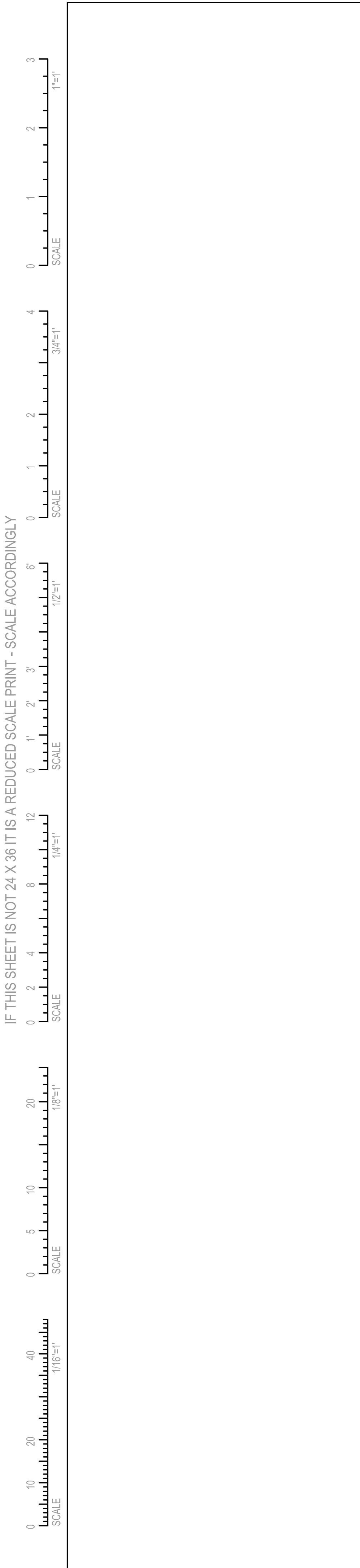


| FIN. FLOOR ELEVATIONS |           |         |
|-----------------------|-----------|---------|
| FLOOR LEVEL           | ARCHITECT | CIVIL   |
| BASEMENT              | 89'-0"    | 119'-0" |
| FIRST                 | 100'-0"   | 130'-0" |
| SECOND                | 115'-6"   | 145'-6" |
| ROOF                  | 130'-0"   | 160'-0" |

\*ALL INVERTS BASED ON ARCHITECT ELEVATIONS.

**NOTE: PLUMBING CONTRACTOR TO PROVIDE 4" CONCRETE HOUSEKEEPING PADS ON ALL PLUMBING/DENTAL EQUIPMENT. PADS TO EXTEND 1'-0" ALL AROUND EQUIPMENT.**

**FIN. FLR. ABOVE - 100'-0"**



**PORT CITY ARCHITECTURE**  
 65 NEWBURY STREET  
 PORTLAND, ME 04101  
 207.761.9000  
 info@portcityarch.com  
 WWW.PORTCITYARCH.COM

CONSULTANTS



Site Design Associates  
 23 Whitney Way  
 Topsham, Maine 04086  
 207-449-4275

| REVISIONS |                     |         |
|-----------|---------------------|---------|
| No.       | Description         | Date    |
| 1         | Addendum #8         | 7/30/12 |
| 2         | Addendum #9         | 8/5/12  |
| 3         | Comp. Care Addition | 1/07/13 |

CONSTRUCTION DOCUMENTS

**UNIVERSITY OF NEW ENGLAND**  
 PORTLAND, MAINE

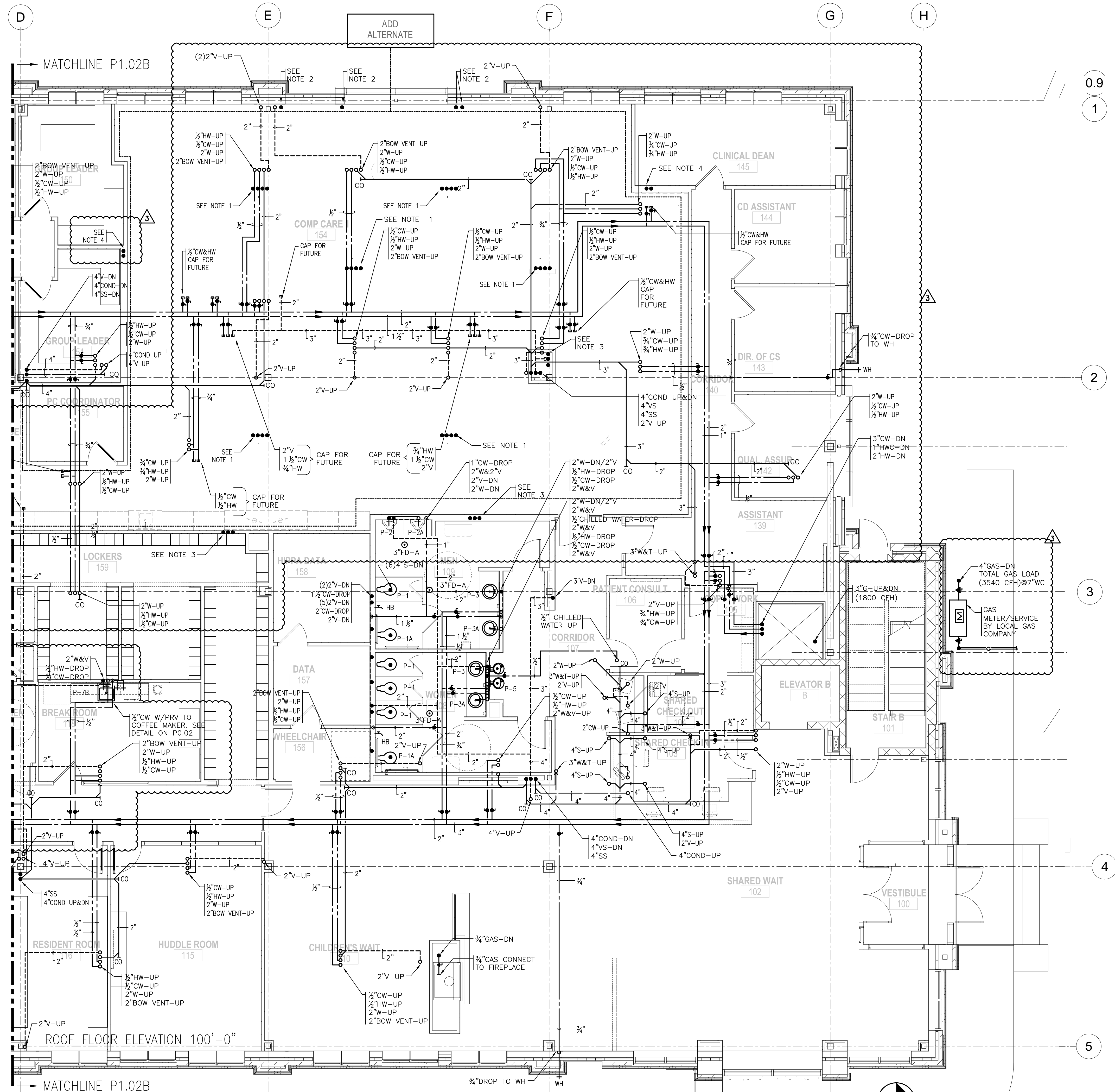
**PATIENT CARE CENTER**  
 INTERIOR FIT-OUT

**PLUMBING BASEMENT FLOOR "B" PLAN**

Project Number **12502**  
 Date **July 16, 2012**  
 Drawn by **SCW/CSSV**  
 Checked by **SPQ**

**P1.01B**  
 Scale **3/16" = 1'-0"**

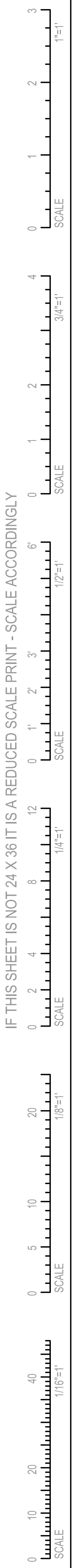




| FIN. FLOOR ELEVATIONS |           |         |
|-----------------------|-----------|---------|
| FLOOR LEVEL           | ARCHITECT | CIVIL   |
| BASEMENT              | 89'-0"    | 119'-0" |
| FIRST                 | 100'-0"   | 130'-0" |
| SECOND                | 115'-6"   | 145'-6" |
| ROOF                  | 130'-0"   | 160'-0" |

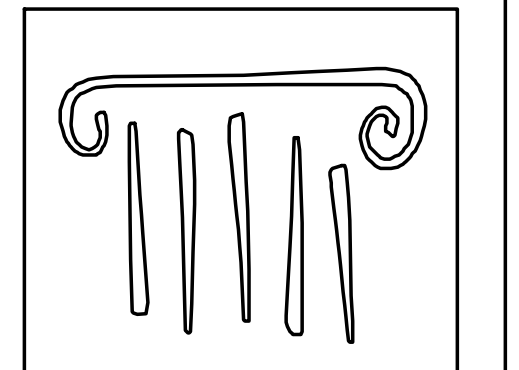
\*ALL INVERTS BASED ON ARCHITECT ELEVATIONS.

IF THIS SHEET IS NOT 24 X 36 IT IS A REDUCED SCALE PRINT - SCALE ACCORDINGLY



2 PLUMBING FIRST FLOOR "B" PLAN  
3/16" = 1'-0"

- NOTES:**
- 1) 1/2" CW&HW, 2" BOW VENT AND 2" WASTE STUB UP, CAP 2'-0" ABOVE FINISHED FLOOR FOR FUTURE ADD ALTERNATE. REFER TO DRAWING P102C FOR CONTINUATION.
  - 2) 2" BOW VENT STUB UP, CAP 2'-0" ABOVE FINISHED FLOOR FOR FUTURE ADD ALTERNATE. REFER TO DRAWING P102C FOR CONTINUATION.
  - 3) 1/2" CW&HW AND 2" BOW VENT STUB UP, CAP PIPING ABOVE CEILING FOR FUTURE ADD ALTERNATE. REFER TO DRAWING P102C FOR CONTINUATION.
  - 4) 1/2" CW&HW STUB UP, CAP PIPING ABOVE CEILING FOR FUTURE ADD ALTERNATE. REFER TO DRAWING P102C FOR CONTINUATION.



**PORT CITY ARCHITECTURE**  
65 NEWBURY STREET  
PORTLAND, ME 04101  
207.761.9000  
info@portcityarch.com  
WWW.PORTCITYARCH.COM

CONSULTANTS



Site Design Associates  
23 Whitney Way  
Topsham, Maine 04086  
207-449-4275

| REVISIONS |                     |         |
|-----------|---------------------|---------|
| No.       | Description         | Date    |
| 1         | Addendum #8         | 7/30/12 |
| 2         | Addendum #9         | 8/5/12  |
| 3         | Comp. Care Addition | 1/27/13 |

CONSTRUCTION DOCUMENTS

UNIVERSITY OF NEW ENGLAND  
PORTLAND, MAINE

PATIENT CARE CENTER  
INTERIOR FIT-OUT  
PLUMBING  
FIRST FLOOR PLAN "B"  
PLAN

|                |               |
|----------------|---------------|
| Project Number | 12502         |
| Date           | July 16, 2012 |
| Drawn by       | SCW           |
| Checked by     | SPQ           |

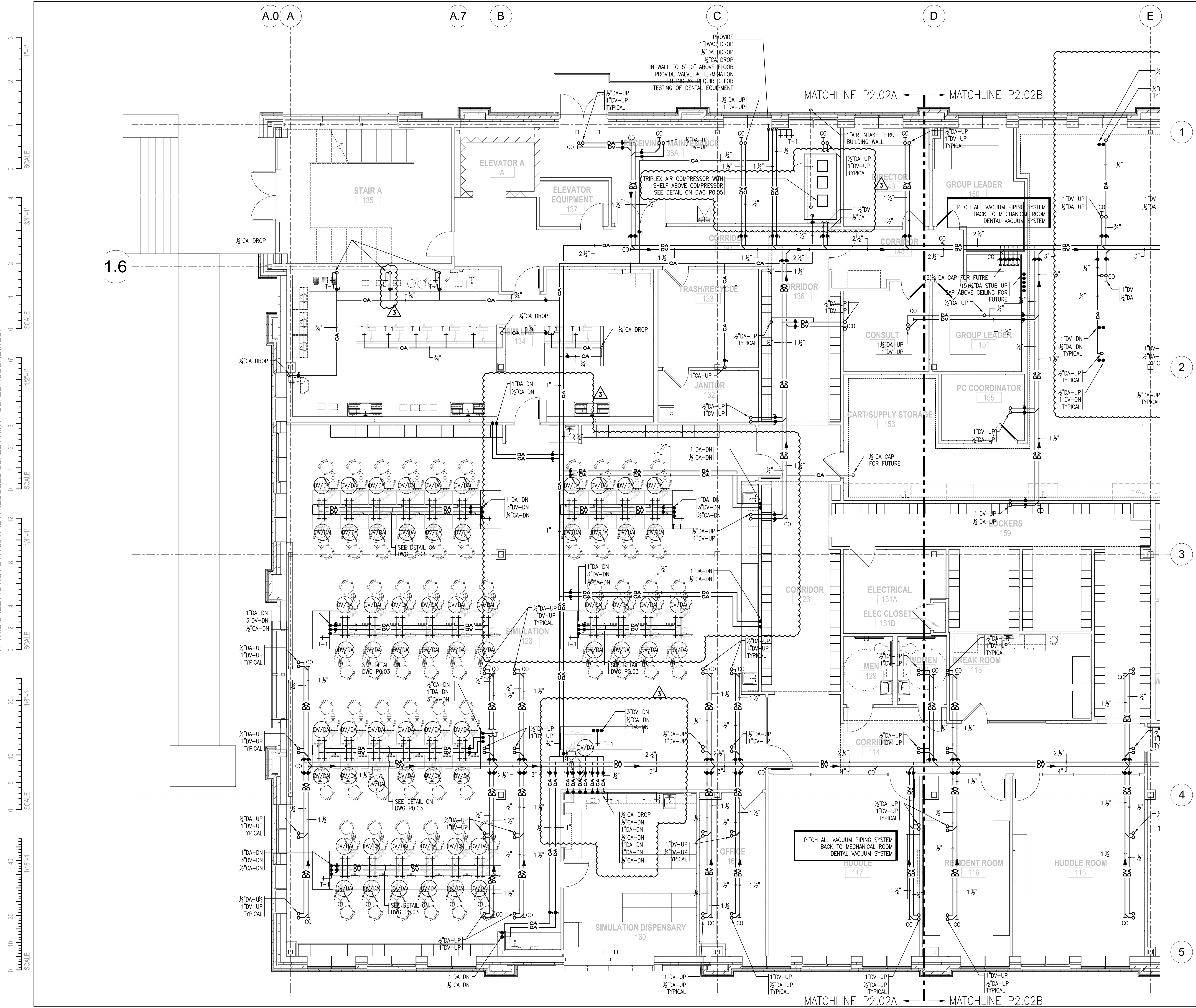
**P1.02B**  
Scale AS NOTED





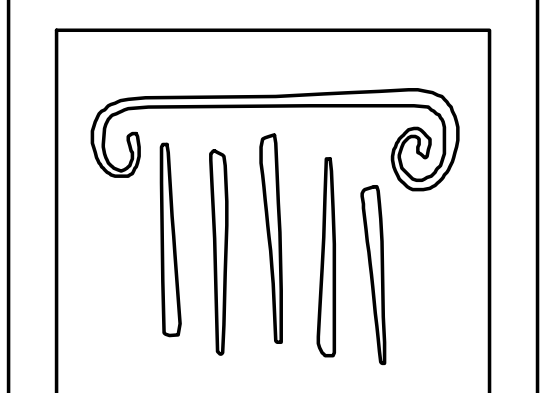


JUN 2012 0212 UNE College of Dentistry, Maine\CAD-FIT OUT\FFP\0212 - P2.02A.dwg, By: ede, PLOTTED: Dec 31, 2012 - 3:22pm  
 IF THIS SHEET IS NOT 24 X 36 IT IS A REDUCED SCALE PRINT - SCALE ACCORDINGLY



| FIN. FLOOR ELEVATIONS |           |         |
|-----------------------|-----------|---------|
| FLOOR LEVEL           | ARCHITECT | CIVIL   |
| BASEMENT              | 89'-0"    | 119'-0" |
| FIRST                 | 100'-0"   | 130'-0" |
| SECOND                | 115'-6"   | 145'-6" |
| ROOF                  | 130'-0"   | 160'-0" |

\*ALL INVERTS BASED ON ARCHITECT ELEVATIONS.



**PORT CITY ARCHITECTURE**  
 65 NEWBURY STREET  
 PORTLAND, ME 04101  
 207.761.9000  
 info@portcityarch.com  
 WWW.PORTCITYARCH.COM

CONSULTANTS



Site Design Associates  
 23 Whitney Way  
 Topsham, Maine 04086  
 207-449-4275

| REVISIONS |                     |         |
|-----------|---------------------|---------|
| No.       | Description         | Date    |
| 1         | Addendum #1         | 8/16/12 |
| 2         | Comp. Care Addition | 1/07/13 |

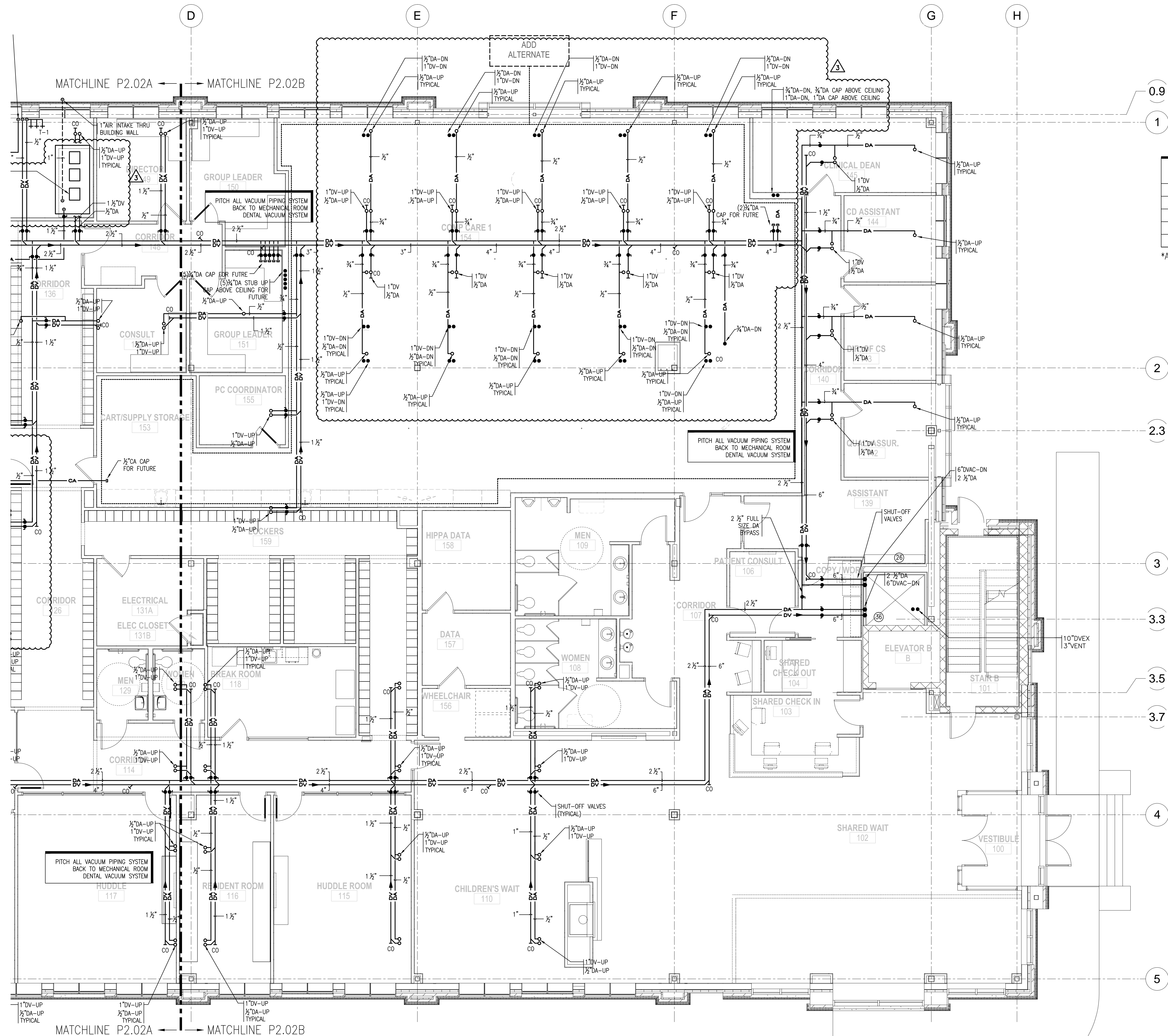
CONSTRUCTION DOCUMENTS

**UNIVERSITY OF NEW ENGLAND**  
 PORTLAND, MAINE  
**PATIENT CARE CENTER**  
 INTERIOR FIT-OUT  
**DENTAL FIRST FLOOR "A" PLAN**

Project Number: 12502  
 Date: July 16, 2012  
 Drawn by: SCW  
 Checked by: SPQ

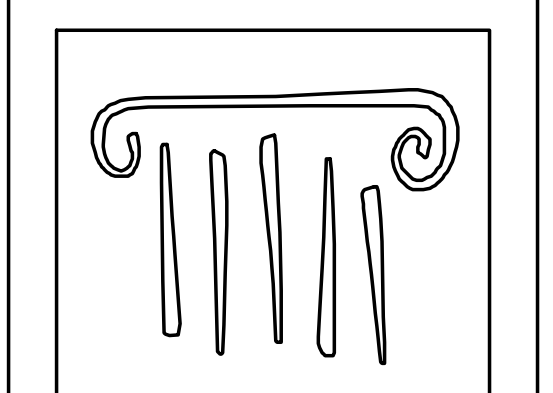
**P2.02A**  
 Scale: 3/16" = 1'-0"

JUN 2012 0212 UNE College of Dentistry, Maine\CAD-FIT OUT\FPP\0212 - P2.02A.dwg, By: ede, PLOTTED: Dec 31, 2012 - 3:22pm  
 IF THIS SHEET IS NOT 24 X 36 IT IS A REDUCED SCALE PRINT - SCALE ACCORDINGLY



| FIN. FLOOR ELEVATIONS |           |         |
|-----------------------|-----------|---------|
| FLOOR LEVEL           | ARCHITECT | CIVIL   |
| BASEMENT              | 89'-0"    | 119'-0" |
| FIRST                 | 100'-0"   | 130'-0" |
| SECOND                | 115'-6"   | 145'-6" |
| ROOF                  | 130'-0"   | 160'-0" |

\*ALL INVERTS BASED ON ARCHITECT ELEVATIONS.



**PORT CITY ARCHITECTURE**  
 65 NEWBURY STREET  
 PORTLAND, ME 04101  
 207.761.9000  
 info@portcityarch.com  
 WWW.PORTCITYARCH.COM

CONSULTANTS



Site Design Associates  
 23 Whitney Way  
 Topsham, Maine 04086  
 207-449-4275

| REVISIONS |                     |         |
|-----------|---------------------|---------|
| No.       | Description         | Date    |
| 1         | Addendum #1         | 8/16/12 |
| 2         | Comp. Care Addition | 3/07/13 |

CONSTRUCTION DOCUMENTS

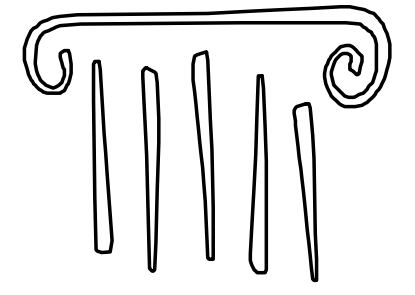
**UNIVERSITY OF NEW ENGLAND**  
 PORTLAND, MAINE

**PATIENT CARE CENTER**  
 INTERIOR FIT-OUT

**DENTAL FIRST FLOOR "B" PLAN**

Project Number 12502  
 Date July 16, 2012  
 Drawn by SCW  
 Checked by SPQ

**P2.02B**  
 Scale 3/16" = 1'-0"



**PORT CITY ARCHITECTURE**

65 NEWBURY STREET  
 PORTLAND, ME 04101  
 207.761.9000  
 info@portcityarch.com  
 WWW.PORTCITYARCH.COM

CONSULTANTS



Site Design Associates  
 23 Whitney Way  
 Topsham, Maine 04086  
 207-449-4275

REVISIONS

| No.                   | Description | Date    |
|-----------------------|-------------|---------|
| ▲ Addendum #1         |             | 8/16/12 |
| ▲ Comp. Care Addition |             | 3/07/13 |

CONSTRUCTION DOCUMENTS

**UNIVERSITY OF NEW ENGLAND**  
 PORTLAND, MAINE

**PATIENT CARE CENTER**  
 INTERIOR FIT-OUT

**DENTAL SECOND FLOOR "B" PLAN**

Project Number 12502  
 Date July 16, 2012  
 Drawn by SCW  
 Checked by SPQ

**P2.03B**

Scale 3/16" = 1'-0"

| FIN. FLOOR ELEVATIONS |           |         |
|-----------------------|-----------|---------|
| FLOOR LEVEL           | ARCHITECT | CIVIL   |
| BASEMENT              | 89'-0"    | 119'-0" |
| FIRST                 | 100'-0"   | 130'-0" |
| SECOND                | 115'-6"   | 145'-6" |
| ROOF                  | 130'-0"   | 160'-0" |

\*ALL INVERTS BASED ON ARCHITECT ELEVATIONS.



IF THIS SHEET IS NOT 24 X 36 IT IS A REDUCED SCALE PRINT - SCALE ACCORDINGLY