



65 NEWBURY STREET
 PORTLAND, ME 04101
 207.761.9000
 info@portcityarch.com
 WWW.PORTCITYARCH.COM

CONSULTANTS



Site Design Associates
 23 Whitney Way
 Topsham, Maine 04086
 207-449-4275

REVISIONS

No.	Description	Date
1	Addendum #8	7/30/12
2	Addendum #9	8/6/12
3	First Floor Redesign	1/09/13

CONSTRUCTION DOCUMENTS

UNIVERSITY OF
 NEW ENGLAND
 PORTLAND, MAINE
 PATIENT CARE
 CENTER
 INTERIOR FIT-OUT
 HVAC DUCTWORK
 FIRST FLOOR

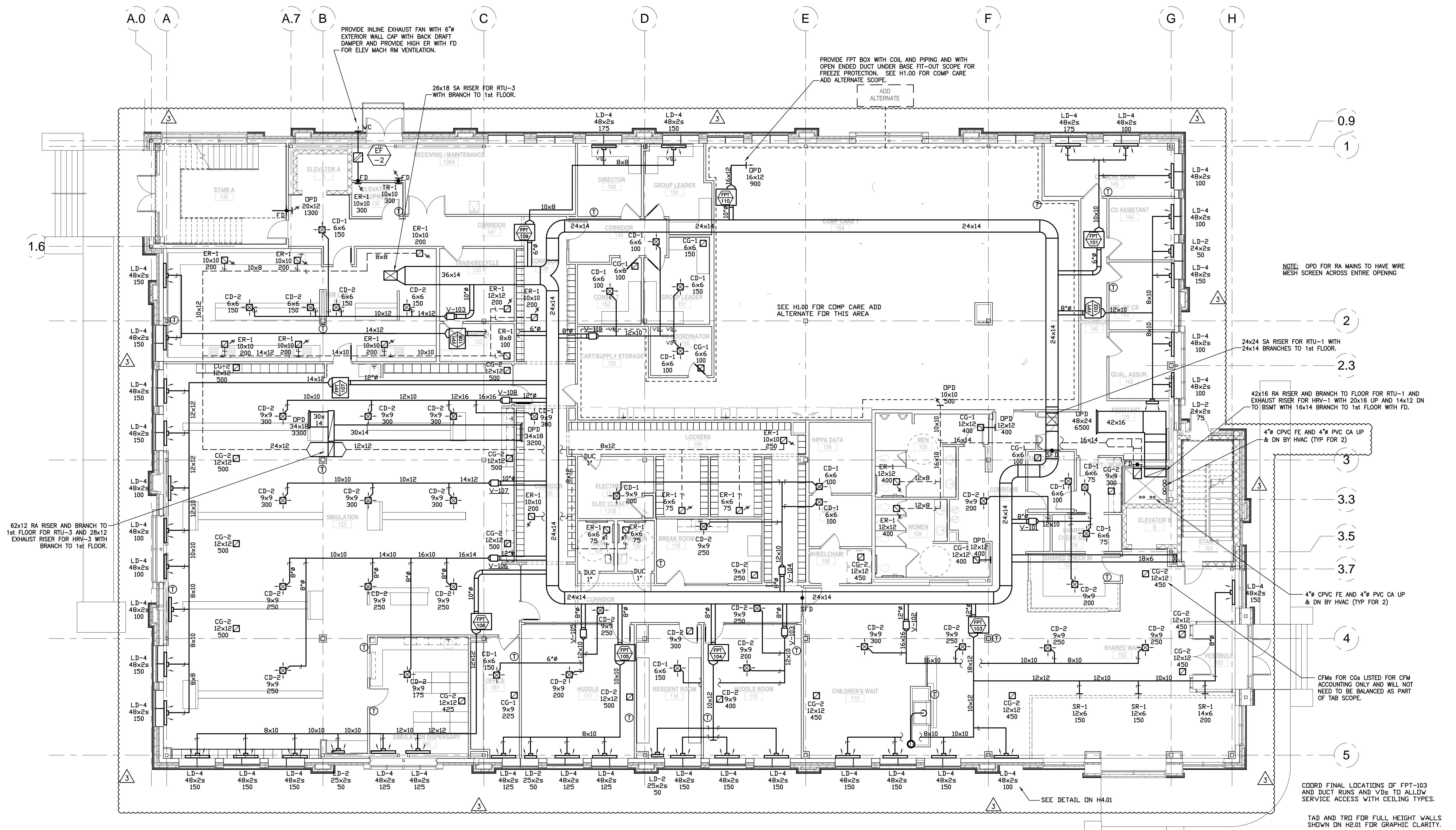
Project Number 12502
 Date JANUARY 9, 2012
 Drawn by JRK
 Checked by KAB

H1.01

Scale 1/8" = 1'-0"

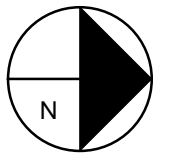
IF THIS SHEET IS NOT 24 X 36 IT IS A REDUCED SCALE PRINT - SCALE ACCORDINGLY

SCALE 1"=1'
 SCALE 3/4"=1'
 SCALE 1/2"=1'
 SCALE 1/4"=1'
 SCALE 1/8"=1'



HVAC DUCTWORK - FIRST FLOOR PLAN
 SCALE 1/8" = 1'-0"

LD/CD/ER RUN-OUT SIZES
 6" = 50-125 CFM
 8" = 125-250 CFM
 10" = 275-400 CFM
 12" = 425-650 CFM





65 NEWBURY STREET
 PORTLAND, ME 04101
 207.761.9000
 info@portcityarch.com
 WWW.PORTCITYARCH.COM

CONSULTANTS
Kahler Slater
 experience design



Site Design Associates
 23 Whitney Way
 Topsham, Maine 04086
 207-449-4275

No.	Description	Date
1	Addendum #8	7/30/12
2	Addendum #9	8/6/12
3	First Floor Redesign	1/09/13

CONSTRUCTION DOCUMENTS

UNIVERSITY OF NEW ENGLAND
 PORTLAND, MAINE
PATIENT CARE CENTER
 INTERIOR FIT-OUT

HVAC DUCTWORK SECOND FLOOR

Project Number 12502
 Date JANUARY 9, 2012
 Drawn by JRM
 Checked by KAB

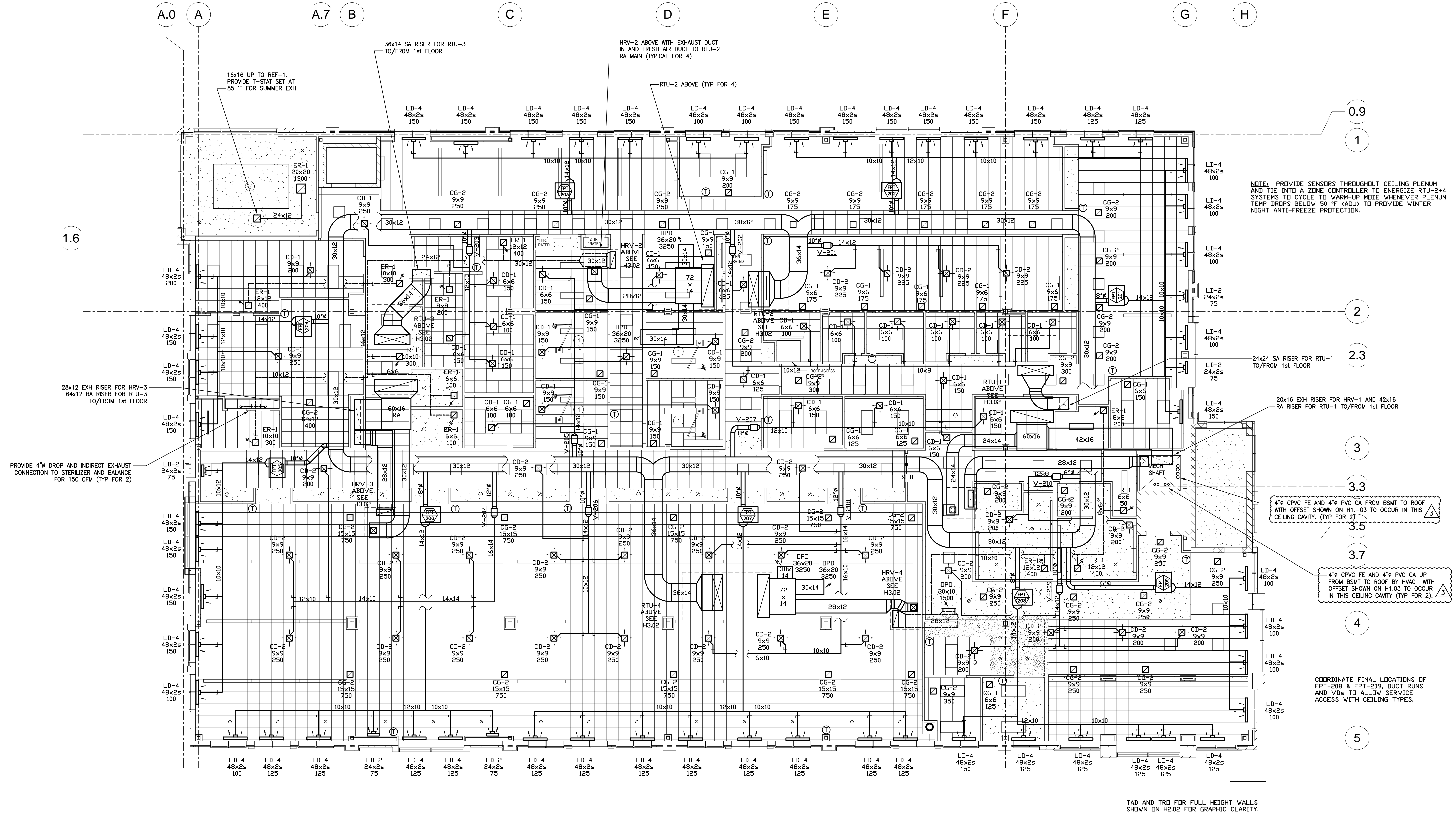
H1.02

Scale 1/8" = 1'-0"

SCALE 1"=1'
 SCALE 3/4"=1'
 SCALE 1/2"=1'
 SCALE 1/4"=1'
 SCALE 1/8"=1'

IF THIS SHEET IS NOT 24 X 36 IT IS A REDUCED SCALE PRINT - SCALE ACCORDINGLY

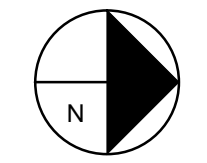
J:\2012\0212 UNE College of Dentistry, Maine\CAD-FIT OUT\HVAC\0212 - H1.02.dwg, By: eds, PLOTTED: Jan 08, 2013 - 4:45pm



HVAC DUCTWORK - SECOND FLOOR PLAN
 SCALE 1/8" = 1'-0"

TAD AND TRD FOR FULL HEIGHT WALLS SHOWN ON H2.02 FOR GRAPHIC CLARITY.

LD/CD/ER RUN-OUT SIZES
 6" = 50-125 CFM
 8" = 125-250 CFM
 10" = 275-400 CFM
 12" = 425-650 CFM





65 NEWBURY STREET
 PORTLAND, ME 04101
 207.761.9000
 info@portcityarch.com
 WWW.PORTCITYARCH.COM

CONSULTANTS



Site Design Associates
 23 Whitney Way
 Topsham, Maine 04086
 207-449-4275

REVISIONS

No.	Description	Date
▲ Addendum #8		7/30/12
▲ Addendum #9		8/6/12
▲ First Floor Redesign		1/09/13

CONSTRUCTION DOCUMENTS

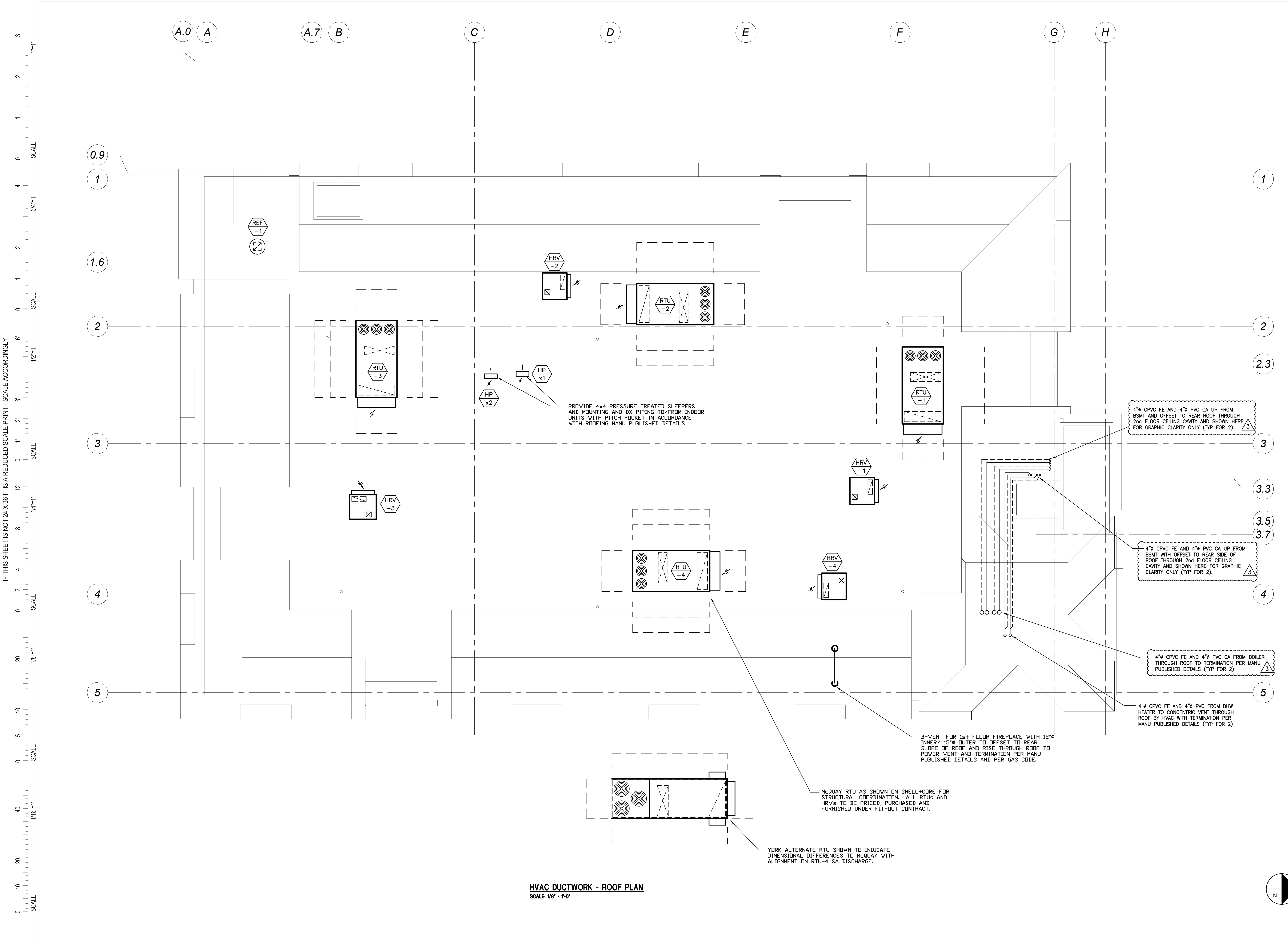
UNIVERSITY OF
 NEW ENGLAND
 PORTLAND, MAINE
 PATIENT CARE
 CENTER
 INTERIOR FIT-OUT

HVAC
 ROOF PLAN

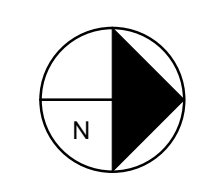
Project Number 12502
 Date JANUARY 9, 2012
 Drawn by JRM
 Checked by KAB

H1.03

Scale 1/8" = 1'-0"



HVAC DUCTWORK - ROOF PLAN
 SCALE 1/8" = 1'-0"





65 NEWBURY STREET
 PORTLAND, ME 04101
 207.761.9000
 info@portcityarch.com
 WWW.PORTCITYARCH.COM

CONSULTANTS
Kahler Slater
 experience design



Site Design Associates
 23 Whitney Way
 Topsham, Maine 04086
 207-449-4275

No.	Description	Date
▲	Addendum #8	7/30/12
▲	Addendum #9	8/6/12
▲	First Floor Redesign	1/09/13

CONSTRUCTION DOCUMENTS

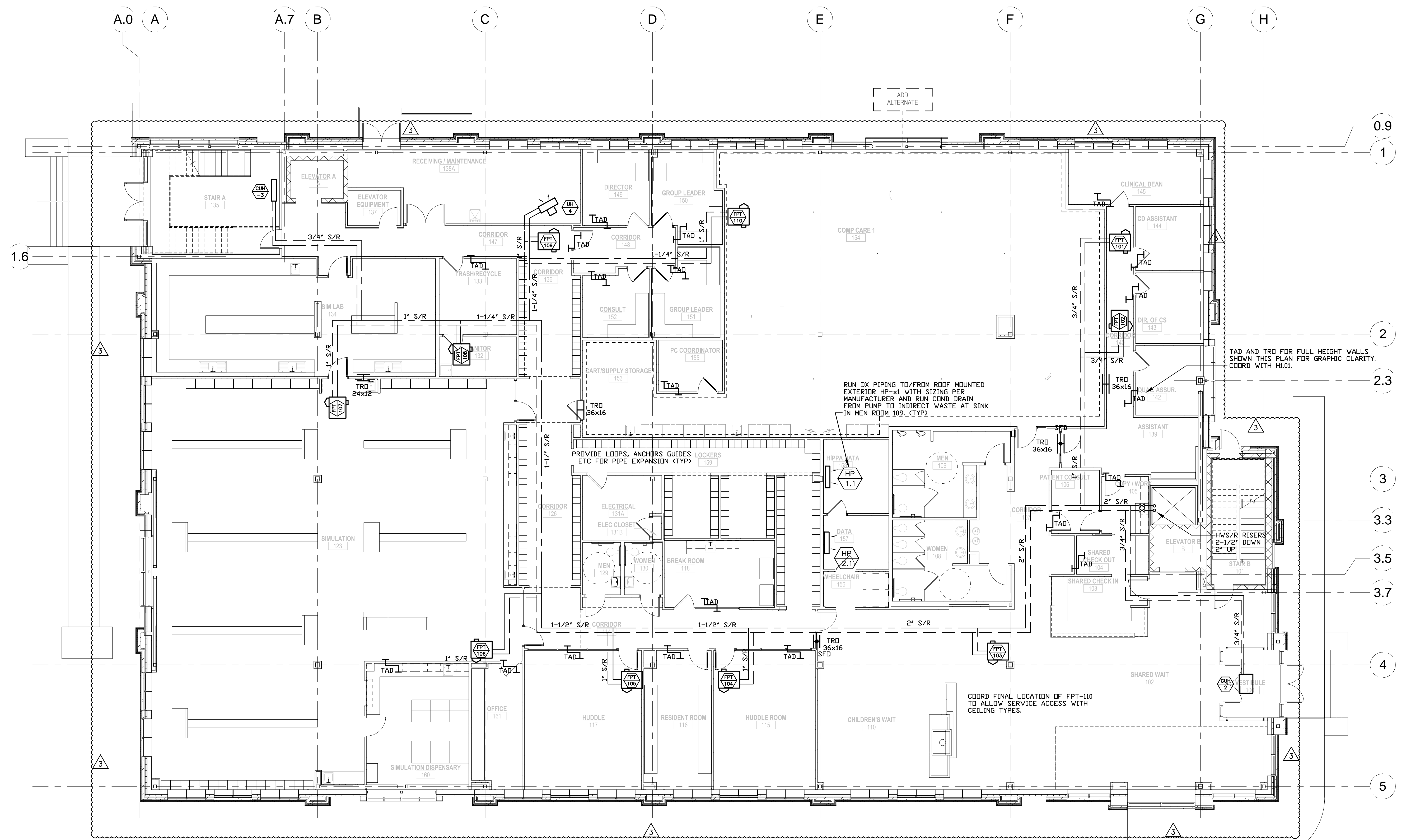
**UNIVERSITY OF
 NEW ENGLAND**
 PORTLAND, MAINE
**PATIENT CARE
 CENTER**
 INTERIOR FIT-OUT

**HVAC PIPE
 FIRST FLOOR**

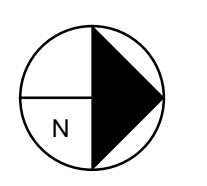
Project Number 12502
 Date JANUARY 9, 2012
 Drawn by JRM
 Checked by KAB

H2.01
 Scale 1/8" = 1'-0"

SCALE 1"=1'
 SCALE 3/4"=1'
 SCALE 1/2"=1'
 SCALE 1/4"=1'
 SCALE 1/8"=1'
 SCALE 1/16"=1'



HVAC PIPING - FIRST FLOOR PLAN
 SCALE 1/8" = 1'-0"





65 NEWBURY STREET
 PORTLAND, ME 04101
 207.761.9000
 info@portcityarch.com
 WWW.PORTCITYARCH.COM

CONSULTANTS
Kahler Slater
 experience design



Site Design Associates
 23 Whitney Way
 Topsham, Maine 04086
 207-449-4275

No.	Description	Date
1	Addendum #8	7/30/12
2	Addendum #9	8/16/12
3	First Floor Redesign	1/09/13

CONSTRUCTION DOCUMENTS

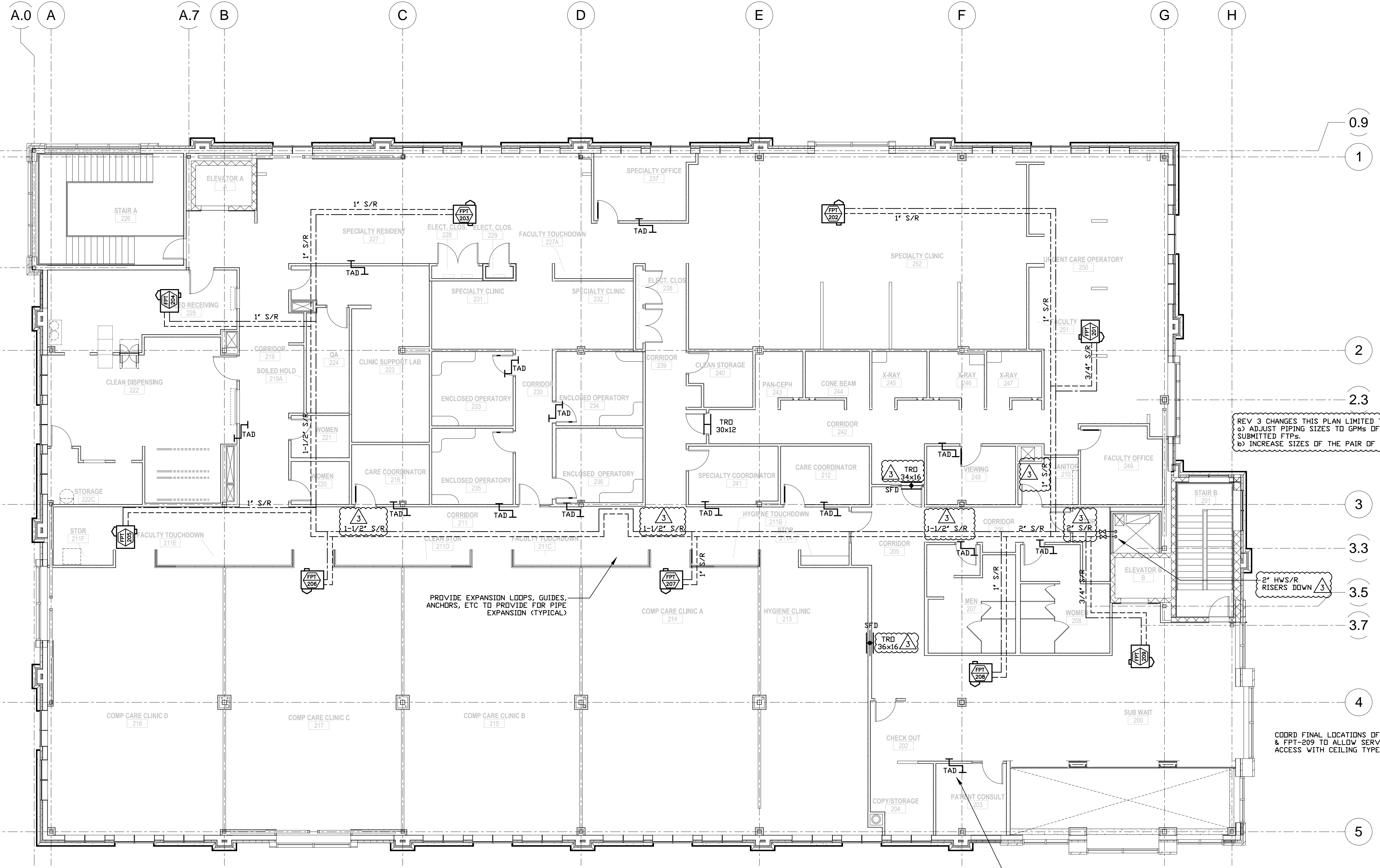
**UNIVERSITY OF
 NEW ENGLAND**
 PORTLAND, MAINE
**PATIENT CARE
 CENTER**
 INTERIOR FIT-OUT

HVAC PIPE
 SECOND FLOOR

Project Number 12502
 Date JANUARY 9, 2012
 Drawn by JRM
 Checked by KAB

H2.02
 Scale 1/8" = 1'-0"

SCALE 1"=1'
 SCALE 3/4"=1'
 SCALE 1/2"=1'
 SCALE 1/4"=1'
 SCALE 1/8"=1'
 SCALE 1/16"=1'



HVAC PIPING - SECOND FLOOR PLAN
 SCALE 1/8" = 1'-0"

TAD AND TRD FOR FULL HEIGHT WALLS SHOWN THIS PLAN FOR GRAPHIC CLARITY. COORD WITH H1.02.



65 NEWBURY STREET
 PORTLAND, ME 04101
 207.761.9000
 info@portcityarch.com
 WWW.PORTCITYARCH.COM

CONSULTANTS



Site Design Associates
 23 Whitney Way
 Topsham, Maine 04086
 207-449-4275

REVISIONS

No.	Description	Date
Δ	Addendum #8	7/30/12
Δ	Addendum #9	8/6/12
Δ	First Floor Redesign	1/09/13

CONSTRUCTION DOCUMENTS

UNIVERSITY OF
 NEW ENGLAND
 PORTLAND, MAINE
 PATIENT CARE
 CENTER
 INTERIOR FIT-OUT
 HVAC
 SCHEDULES

Project Number 12502
 Date JANUARY 9, 2012
 Drawn by JRM
 Checked by KAB

H3.01

Scale NTS

GAS FIRED PACKAGED ROOF-TOP UNIT SCHEDULE

MARK	MODEL (MANU)	TOTAL C.F.M.	OUTSIDE AIR		E.S.P. (N. H ₂ O)	COOLING CAPACITY		GAS HEATING (MBH)		ELECTRICAL CHARACTERISTICS										WEIGHT (LBS)	REMARKS						
			FROM HRV	DIRECT OA		TOTAL M.B.H.	SENS M.B.H.	MAX IN/OUT.	STEPS	MIN IN/OUT.	INDOOR SA FAN NO.	HP	FLA	EXHAUST FAN NO.	HP	FLA	OUTDOOR FANS NO.	HP	FLA			COMPRESSORS NO.	RLA	LRA	MCA	MOCP	
	(McQUAY)																										
RTU-1+2+3+4	MPS-026G	10,000	2500	1000	2.00	313	249	600/480	4	150/120	1	10.0	26	2	1.0	3.7	3	0.33	1.4	3	25.0	180	130	150	4000	1+2+3+4+5+6+7+8+9	
	(YORK)																										
RTU-1+2+3+4	V32-AN-52	10,000	2,500	1,000	2.00	296	218	533/426	2	267/213	1	10.0	30.8	1	7.5	24.2	4	0	1.0	4.5	4	23.0	160	173	200	4000	1+2+3+4+5+6+7+8+9

NOTES: 1) ELECTRICAL BASED ON 208-230/3/60. 2) MINIMUM 4 STEPS COOLING CAPACITY CONTROL AND WITH HOT GAS BY-PASS. 3) MINIMUM TWO STEP GAS CONTROL. 4) PROVIDE WITH FULL ECONOMIZER WITH BAROMETRIC RELIEF AND POWER EXHAUST. 5) PROVIDE WITH VAV CONTROLLER AND VFD FOR SUPPLY FAN. 6) PROVIDE FULL PERIMETER, 14" HIGH ROOF CURB. 7) PROVIDE WITH HACR CIRCUIT BREAKER/DISCONNECT AND CONVENIENCE OUTLET. 8) PROVIDE WITH BACNET INTERFACE TO CAMPUS BMS AND FULL DDC CONTROL PACKAGE. 9) PROVIDE WITH ONE (1) YEAR WARRANTY ON ENTIRE UNIT AND FIVE (5) YEAR ON COMPRESSORS AND TEN (10) YEAR ON ALUMINIZED HEAT EXCHANGER.

HOT WATER UNIT HEATER SCHEDULE

UNIT NO	MODEL (STERLING)	MBH (MAX)	CFM	GPM	PD (FT)	MOTOR (Watt/AMP)	SERVING	NOTES
UH-1	HS-36	26.1	550	2.7	0.09	9 - 0.53	MECH. ROOM	1+2
UH-2	HS-36	26.1	550	2.7	0.09	9 - 0.53	MECH. ROOM	1+2
UH-3	HS-36	26.1	550	2.7	0.09	9 - 0.53	MECH. ROOM	1+2
UH-4	HS-24	17.4	450	1.8	-	9 - 0.53	MECH-438	1+2
CUH-1	FSI-1055-03	13.6	335	2.3	-	50 - 0.8	STAIR 1- BSMT	1+2
CUH-2	RC-1200-04	18.0	430	3.0	-	74 - 1.4	NORTH ENTRY 428	1+2
CUH-3	FSI-1055-03	13.6	335	2.3	-	50 - 0.8	STAIR 2- 1st	1+2
CUH-4	DELETED						RECEIVE 138a	DELETED

NOTES: 1) ELECTRICAL BASED ON 120-1-60. 2) ALTERNATE MANUFACTURERS TO INCLUDE AIRTHERM OR BEACON-MORRIS. 3) PROVIDE OPTIONAL SEMI RECESS KIT/ INSTALL WITH BOTTOM AT 6"-8" AFF

HEAT RECOVERY UNIT (HRV) SCHEDULE

MARK	MODEL RENEWAIRE	SERVES	EXHAUST SIDE			INTAKE SIDE			SENS EFF (%)	SUMMER OPERATION		WINTER OPERATION		ELECTRIC			WEIGHT (LBS)	NOTES		
			CFM	ESP	MOTOR (hp)	CFM	ESP	MOTOR (hp)		EAT-EXH Db-Wb	EAT-OA Db-Wb	LAT-SA Db-Wb	EAT-EXH Db-Wb	EAT-OA Db-Wb	LAT-SA Db-Wb	FLA			MCA	MOP
HRV-1	HE-3X-RT	RTU-1	2500	0.75	3.0	2500	0.50	3.0	70	75/62	83/70	77.7/70	70/54	-3/-4	46.5/38	9.2	20.7	30	800	1 +2
HRV-2	HE-3X-RT	RTU-2	2500	0.75	3.0	2500	0.50	3.0	70	75/62	83/70	77.7/70	70/54	-3/-4	46.5/38	9.2	20.7	30	800	1 +2
HRV-3	HE-3X-RT	RTU-3	2500	0.75	3.0	2500	0.50	3.0	70	75/62	83/70	77.7/70	70/54	-3/-4	46.5/38	9.2	20.7	30	800	1 +2
HRV-4	HE-3X-RT	RTU-4	2500	0.75	3.0	2500	0.50	3.0	70	75/62	83/70	77.7/70	70/54	-3/-4	46.5/38	9.2	20.7	30	800	1 +2

NOTES: 1) ELEC BASED ON 208-230/3/60. 2) PROVIDE WITH ROOF CURBS AND BOTTOM DUCT CONNECTIONS.

DUCTLESS SPLIT SYSTEMS

INDOOR MARK	TONS (NOM)	INDOOR MODEL	LOCATION	TYPE	CFM HI/LO	AMPS	CAPACITY (MBH)		OUTDOOR MARK	OUTDOOR MODEL	LOCATION	WEIGHT (LBS)	ELECTRIC (AMPS)					REMARKS
							COOL	HEAT					MCA	MSC	COOL	HEAT	CB	
HP-1.1	2	FTXS-24-DVJU	120a- TELCOM	WALL	530/400	0.2	22.0	8.67	HP-x1	RXS-24-DVJU	ROOF	130	15.8	11.8	10.1	11.1	20	1+2+3+4+5+6+7
HP-2.1	2	FTXS-24-DVJU	120b- IT Rm	WALL	530/400	0.2	22.0	8.67	HP-x2	RXS-24-DVJU	ROOF	130	15.8	11.8	10.1	11.1	20	1+2+3+4+5+6+7

NOTES: 1) ELECTRICAL BASED ON 208/230-1-60. 2) PROVIDE WITH SEVEN (7) YEAR COMPRESSOR AND FIVE (5) YEAR PARTS WARRANTIES. 3) PROVIDE WITH INVERTER DRIVEN, VARIABLE SPEED, SCROLL COMPRESSOR. 4) COOLING CAPACITY BASED ON 95' DA AND 80/67' F RA. 5) HEATING HIGH CAPACITY BASED ON 47' F DA AND 70' F RA AND 25' PIPE RUN. 6) COOLING RANGE TO BE 14'F-115'F DB AND HEATING RANGE TO BE 5'F-65'F DB. 7) BASED ON DAIKIN WITH ALTERNATE MANUFACTURERS TO INCLUDE MITSUBISHI OR CARRIER.

EXHAUST FAN SCHEDULE

MARK	SERVING	C.F.M.	S.P. (INCHES)	R.P.M.	DRIVE	WATTS	HP	AMPS	V-PH-HZ	MODEL	MANUFACTURER	SONES	NOTES
EF-1	ELEV MR - 003	300	0.05	2700	DIR	72	-	0.7	115-1-60	FG-6	FANTECH	1.0	1+3+4
EF-2	ELEV MR - 137	300	0.05	2700	DIR	72	-	0.7	115-1-60	FG-6	FANTECH	1.0	1+3+4
EF-3	DELETED												
REF-1	STAIR A - SOUTH ENTRY	1324	0.63	1550	DIR	-	0.25	3.6	115-1-60	120-C15D	COOK	11.6	1+3+5

NOTES: 1) PROVIDE WITH REMOTE T-STAT AND POWER FAN WHEN SPACE TEMP ABOVE 85' F. 2) FAN TO RUN CONSTANTLY. 3) PROVIDE WITH SOLID STATE VARIABLE SPEED DRIVE FOR BALANCING. 4) PROVIDE WITH WALL CAP WITH BDD. 5) PROVIDE WITH 12" HIGH ROOF CURB AND BDD.

GRILLES, DIFFUSERS & REGISTERS SCHEDULE

TAG	REGISTER/DIFFUSER/GRILLE	CFM RANGE	DESIGN MAX S.P.-NC	NECK/ INLET	LAY-IN PANEL	MANUFACTURER & MODEL	NOTES
CD-1	CEILING SUPPLY DIFFUSER	50-125	0.09-20	6x6- 6"Ø	ND	TITUS TDC	1+2+3+5
CD-2	CEILING SUPPLY DIFFUSER	SEE PLANS	0.09-20	SEE PLANS	24x24	TITUS TDC	1+2+3+5
CR-1	CEILING RETURN DIFFUSER	50-125	0.09-20	6x6- 6"Ø	ND	TITUS TDC	3+5
CR-2	CEILING RETURN DIFFUSER	SEE PLANS	0.09-20	SEE PLANS	24x24	TITUS TDC	3+5
SR-1	SUPPLY AIR REGISTER	SEE PLANS	0.09-20	SEE PLANS	ND	TITUS 300-RL	1+2+3+5
SR-2	SUPPLY AIR REGISTER	SEE PLANS	0.09-20	SEE PLANS	24x24	TITUS 300-RL	1+2+3+5
RR-1	RETURN AIR REGISTER	SEE PLANS	0.09-20	SEE PLANS	ND	TITUS 355-RL	2+3+5
RR-2	RETURN AIR REGISTER	SEE PLANS	0.09-20	SEE PLANS	24x24	TITUS 355-RL	2+3+5
CG-1	CEILING RETURN AIR GRILLE	SEE PLANS	0.09-20	SEE PLANS	ND	TITUS 355-RL	2+3+5
CG-2	CEILING RETURN AIR GRILLE	SEE PLANS	0.09-20	SEE PLANS	24x24	TITUS 355-RL	2+3+5
ER-1	EXHAUST AIR REGISTER	SEE PLANS	0.09-20	SEE PLANS	ND	TITUS 8F	2+3+5
LD-2	LINEAR SUPPLY DIFFUSER	0-100	0.16-35	6"Ø	ND	TBD-30 2 slot =1'x24'	1+2+3+5
LD-4	LINEAR SUPPLY DIFFUSER	125-195	0.12-35	8"Ø	ND	TBD-30 2 slot =1'x48'	1+2+3+5
OPD	OPEN ENDED DUCT	SEE PLANS	0.11-30	SEE PLANS	ND	NDNE	6

NOTES: 1) FOR BLOW PATTERNS, SEE FLOOR PLANS FOR ARROWS. 2) PROVIDE A NECK MOUNTED, VOLUME DAMPER FOR EACH REGISTER AND DIFFUSER AS WELL AS V/D AT BRANCH TAKE-OFF. 3) PROVIDE BORDERS TO MATCH CEILING AND WALL TYPES. 4) DEVICE TO BE DUCT MOUNTED. 5) ALTERNATE MANUFACTURERS TO INCLUDE CARNES OR PRICE. 6) PROVIDE WIRE MESH SCREENING OVER ENTIRE DUCT OPENING.

REV 3 NOTES:
 a) REVISED BOILER MANUFACTURER TO H.T.PRODUCTS PER ONE PREFERENCES.
 b) RE-SIZED BOILERS AND PUMPS FOR PERIMETER HEAT LOAD.

GAS FIRED BOILER SCHEDULE (B-)

MARK	TYPE	SERVICE	MBH - HIGH IN	MBH - LOW DUT	IBR	AFUE %	WATER DATA GPM FWH	MODEL	MFG'R	NOTES			
B-1	GAS-CONDENSING	HEATING	399	380	67	64	318	94	33	30'	EL-399-N	H.T.PRODUCTS	1+2+3
B-2	GAS-CONDENSING	HEATING	399	380	67	64	318	94	33	30'	EL-399-N	H.T.PRODUCTS	1+2+3

NOTES: 1) PROVIDE WITH CONCENTRIC VENT. 2) PROVIDE EACH BOILER WITH A 15 AMP, 230-1-60 CIRCUIT. 3) PROVIDE OUT DOOR TEMPERATURE SENSOR AND COMPENSATED TEMP CONTROL TO RUN BOILERS IN CONDENSING MODE (60-140' F HW) EXCEPT WHEN OUTSIDE TEMP BELOW 10' F OR BELOW.

PUMP SCHEDULE

MARK	SERVING	GPM	FT HEAD	HP	RPM	TYPE	MODEL	VOLTS-PH-HZ	MANU	NOTES
P-1	PRIMARY LOOP	30	50'	1.50	1750	INLINE	1919	208-3-60	TACD	1+2
P-2	PRIMARY LOOP	30	50'	1.50	1750	INLINE	1919	208-3-60	TACD	
CP-1	BOILER B-1	35	35'	0.75	1750	INLINE	1615	208-3-60	TACD	2
CP-2	BOILER B-2	35	35'	0.75	1750	INLINE	1615	208-3-60	TACD	2

NOTES: 1) PROVIDE WITH LEAD-LAG AUTOMATIC CONTROL. 2) PROVIDE POWER CIRCUIT FOR PUMP SEPARATE FROM BOILER AND AN RIB RELAY TO INTERLOCK PUMP AND BOILER.

DIAPHRAGM EXPANSION TANK SCHEDULE

UNIT NO.	LOCATION	SERVICE	SYS. TEMP. (°F)		SYS. PRESS. (PSIG)		TOTAL VOL. TANK	TANK ACCEPTANCE VOLUME (GAL.)	TANK AIR WEIGHT (LBS)	MODEL NUMBER (TACD)	SIZE DIA x HEIGHT	NOTES
			MIN	MAX	MIN	MAX						
ET-1	BOILER RM	MAIN HTG	55	200	20	40	34	15	200	CBX 130	20x38	1

NOTES: 1) ALTERNATE MANUFACTURERS TO INCLUDE AMTROL OR WATTS.

IF THIS SHEET IS NOT 24 X 36 IT IS A REDUCED SCALE PRINT - SCALE ACCORDINGLY

J:\2012\0212 UNE College of Dentistry, Maine\CAD-FIT OUT\HVAC\0212 - H0.01-H3.00 Sch.dwg, By: eds, PLOTTED: Jan 08, 2013 - 4:43pm

IF THIS SHEET IS NOT 24 X 36 IT IS A REDUCED SCALE PRINT - SCALE ACCORDINGLY

VAV BOX SCHEDULE

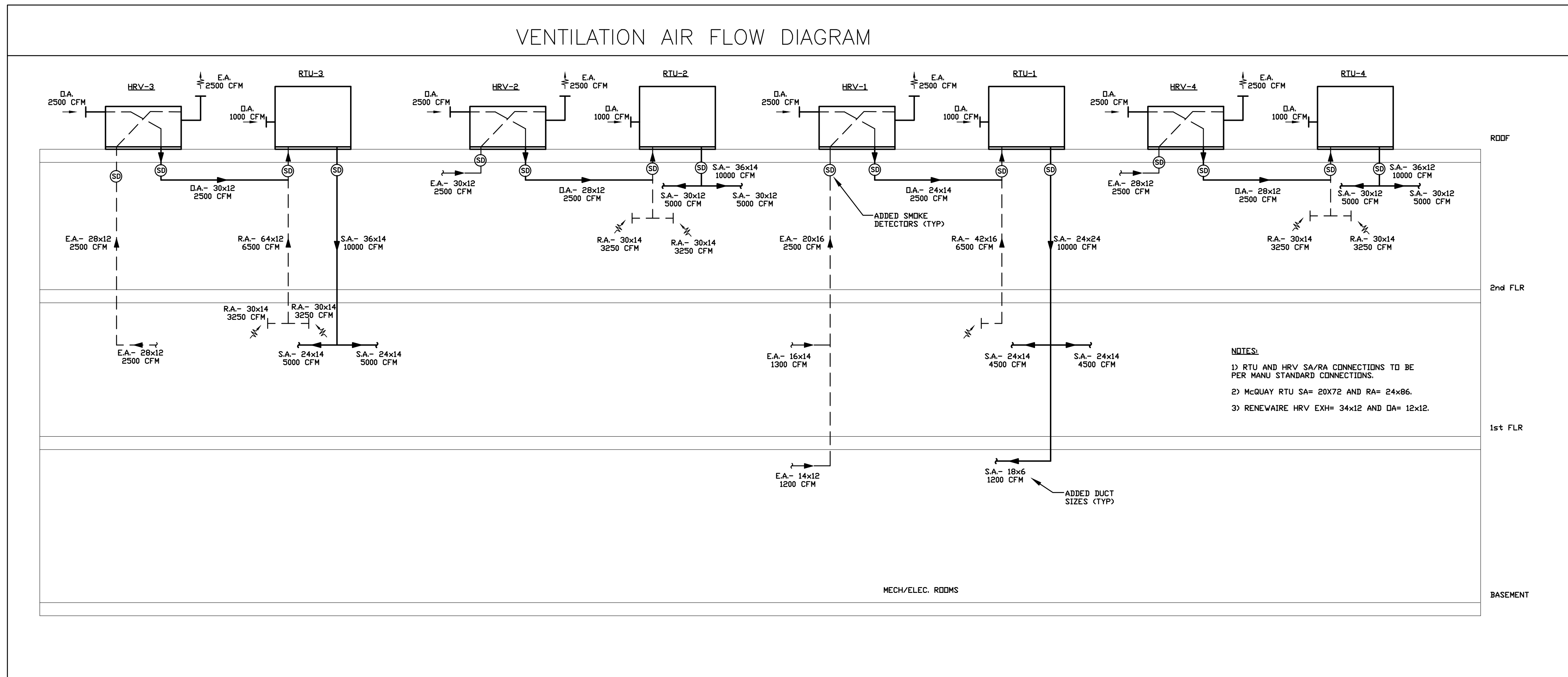
TAG	SPACE SERVED (RM # & NAME)	INLET SIZE (IN)	CFM		AIR PD (INCHES)	OUTLET SIZE (IN) WxH	MANUFACTURER & MODEL	NOTES
			MAX	MIN				
V-001	BSMT MECH RM	14	2000	500	0.26	20x18	TITUS- DESV	1+2+3
V-101	CHECK IN AREA (103)	8	750	200	0.26	12x10	TITUS- DESV	1+2+3
V-102	WAITING (102+110)	12	1150	300	0.26	14x12	TITUS- DESV	1+2+3
V-103	HUDDLE (115) + RESID (116)	8	600	300	0.26	14x12	TITUS- DESV	1+2+3
V-104	BREAK (118) + GENERAL	8	600	400	0.26	16x15	TITUS- DESV	1+2+3
V-105	HUDDLE (117) + OFF (161)	8	550	200	0.26	12x10	TITUS- DESV	1+2+3
V-106	SIM (123) + DISPENSE (160)	12	1175	200	0.26	12x10	TITUS- DESV	1+2+3
V-107	SIM MIDDLE (123)	10	900	200	0.26	12x10	TITUS- DESV	1+2+3
V-108	SIM EAST (123)	12	1200	200	0.26	12x10	TITUS- DESV	1+2+3
V-109	SIM LAB (134)	10	750	200	0.26	12x10	TITUS- DESV	1+2+3
V-110	CONSULT (154) + LEADER (151)	8	450	300	0.26	14x12	TITUS- DESV	1+2+3
V-110-A	AFTER ADD ALT	-	700	200	0.26	12x10	TITUS- DESV	1+2+3
V-111	COMP CARE ADD ALT (154)	14	2000	300	0.26	14x12	TITUS- DESV	1+2+3
V-201	SPECIALTY CLINIC - 252	10	900	300	0.26	14x12	TITUS- DESV	1+2+3
V-202	XRAY SUITE	10	850	300	0.26	14x12	TITUS- DESV	1+2+3
V-203	QA - 224 & CLINIC LAB - 223	10	800	300	0.26	14x12	TITUS- DESV	1+2+3
V-204	CLINICS 218 & 217	12	1700	400	0.26	16x15	TITUS- DESV	1+2+3
V-205	OPERATORY SUITE	10	1150	300	0.26	14x12	TITUS- DESV	1+2+3
V-206	CLINIC - 215	10	1250	300	0.26	14x12	TITUS- DESV	1+2+3
V-207	CORRIDOR - 241 & 211	8	750	200	0.26	12x10	TITUS- DESV	1+2+3
V-208	CLINICS - 214 & 213	12	1750	400	0.26	16x15	TITUS- DESV	1+2+3
V-209	WAITING - 200	10	1000	300	0.26	14x12	TITUS- DESV	1+2+3
V-210	WOM-208 + MEN-207	6	400	100	0.22	12x8	TITUS- DESV	1+2+3

NOTES: 1) PROVIDE WITH 24 VAC, CLASS 2 TRANSFORMER WITH 50 VA, 35 WATT OUTPUT. CONTROL CONSUMPTION SHALL BE MAX OF 15 WATT INCLUDING ANY EXTERNAL ACCESSORIES. 2) CONTROLS SHALL BE PROVIDED BY THE ATC SUB-CONTRACTOR AND SHALL BE DDC AND COMPATIBLE WITH BUILDING BMS SYSTEM. CONTROLS SHALL INCLUDE ZONE SENSORS/T-STATS AND NIGHT SET BACK WITH AUTOMATIC CHANGE OVER FOR ANY HEATING CYCLE. 3) DISCHARGE DUCT SIZE SHALL MATCH VAV BOX OUTLET SIZE.

PARALLEL FLOW FAN POWERED TERMINAL BOX SCHEDULE

MARK	SPACE SERVED (NAME & RM #)	VAV PRIMARY SA CFM				UNIT (FAN) SIZE	FAN CFM @ 0.25 ESP	FAN ELECTRICAL			HW HEATING COIL				OUTLET SIZE (IN) WxH	MANUFACTURER & MODEL	NOTES	
		INLET SIZE	MAX	MIN	AIR PD			FAN HP	AMPS	V-PH-HZ	MBH	ROWS	AIR DROP	GPM				WATER DROP
FPT-101	DEAN (145)	6	375	100	0.35	2	300	1/10	2.7	120-1-60	17.4	1	0.01	1.8	4.0	14x12	TITUS- DTQP	1+2+3+4+5
FPT-102	NORTH OFFICES	8	575	200	0.26	3	500	1/8	4.9	120-1-60	23.8	1	0.05	2.4	7.0	14x12	TITUS- DTQP	1+2+3+4+5
FPT-103	WAITING (102+110)	12	1250	1000	0.25	4	1000	1/4	9.6	120-1-60	32.7	2	0.11	4.0	7.0	14x12	TITUS- DTQP	1+2+3+4+5
FPT-104	HUD (115) + RES (116)	8	500	200	0.26	3	500	1/8	4.9	120-1-60	23.8	1	0.05	2.4	7.0	14x12	TITUS- DTQP	1+2+3+4+5
FPT-105	HUD (117) + OFF (161)	8	500	200	0.26	3	500	1/8	4.9	120-1-60	23.8	1	0.05	2.4	7.0	14x12	TITUS- DTQP	1+2+3+4+5
FPT-106	SIM (123 EAST)	10	750	300	0.30	3	700	1/4	9.6	120-1-60	35.2	1	0.09	3.6	18.0	14x12	TITUS- DTQP	1+2+3+4+5
FPT-107	SIM (123 SOUTH)	12	1200	1000	0.25	4	1000	1/4	9.6	120-1-60	32.7	2	0.11	4.0	7.0	14x12	TITUS- DTQP	1+2+3+4+5
FPT-108	SIM LAB (134)	6	300	100	0.35	2	300	1/10	2.7	120-1-60	17.4	1	0.01	1.8	4.0	14x12	TITUS- DTQP	1+2+3+4+5
FPT-109	DIR (149) + LDR (150)	6	325	100	0.35	2	300	1/10	2.7	120-1-60	17.4	1	0.01	1.8	4.0	14x12	TITUS- DTQP	1+2+3+4+5
FPT-110	COMP CARE ADD ALT	10	925	300	0.30	3	700	1/4	9.6	120-1-60	35.2	1	0.09	3.6	18.0	14x12	TITUS- DTQP	1+2+3+4+5
FPT-201	RM 249-251	8	725	200	0.26	3	500	1/8	4.9	120-1-60	23.8	1	0.05	2.4	7.0	14x12	TITUS- DTQP	1+2+3+4+5
FPT-202	RM 252	10	1150	300	0.30	3	700	1/4	9.6	120-1-60	35.2	1	0.09	3.6	18.0	14x12	TITUS- DTQP	1+2+3+4+5
FPT-203	RM 237-227	10	1075	300	0.28	3	700	1/4	9.6	120-1-60	35.2	1	0.09	3.6	18.0	14x12	TITUS- DTQP	1+2+3+4+5
FPT-204	RM 225-222	10	850	300	0.18	3	700	1/4	9.6	120-1-60	35.2	1	0.09	3.6	18.0	14x12	TITUS- DTQP	1+2+3+4+5
FPT-205	RM 218	10	775	300	0.15	3	700	1/4	9.6	120-1-60	35.2	1	0.09	3.6	18.0	14x12	TITUS- DTQP	1+2+3+4+5
FPT-206	RM 217-218	8	625	200	0.24	3	500	1/8	4.9	120-1-60	23.8	1	0.05	2.4	7.0	14x12	TITUS- DTQP	1+2+3+4+5
FPT-207	RM 213-215	10	1200	300	0.30	3	700	1/4	9.6	120-1-60	35.2	1	0.09	3.6	18.0	14x12	TITUS- DTQP	1+2+3+4+5
FPT-208	RM 204-205-200	10	800	300	0.28	3	700	1/4	9.6	120-1-60	35.2	1	0.09	3.6	18.0	14x12	TITUS- DTQP	1+2+3+4+5
FPT-209	RM 200 NORTH	6	400	100	0.35	2	300	1/10	2.7	120-1-60	17.4	1	0.01	1.8	4.0	14x12	TITUS- DTQP	1+2+3+4+5

NOTES: 1) ELECTRIC DIGITAL CONTROL COMPATIBLE WITH BUILDING BMS BY ATC SUB-CONTRACTOR. 2) ZONE SENSOR/T-STAT BY ATC. 3) NIGHT SET BACK AND AUTOMATIC TEMPERATURE CHANGE-OVER CONTROLS BY ATC. 4) DISCHARGE DUCT SIZE SHALL MATCH VAV BOX OUTLET SIZE. 5) BOX MANUFACTURER TO PROVIDE SINGLE POINT POWER CONNECTION AND STEP DOWN TRANSFORMER FOR 24 VOLT CONTROLS.



PORT CITY ARCHITECTURE
 65 NEWBURY STREET
 PORTLAND, ME 04101
 207.761.9000
 info@portcityarch.com
 WWW.PORTCITYARCH.COM

CONSULTANTS

Kahler Slater
 experience design

Vincent A. Dilorio
 Inc.

E.D.E. INC.
 23 WHITNEY WAY
 TOPSHAM, MAINE 04086
 207-449-4275

Site Design Associates
 23 Whitney Way
 Topsham, Maine 04086
 207-449-4275

REVISIONS

No.	Description	Date
1	Addendum #8	7/30/12
2	Addendum #9	8/6/12
3	First Floor Redesign	1/09/13

CONSTRUCTION DOCUMENTS

UNIVERSITY OF NEW ENGLAND
 PORTLAND, MAINE
PATIENT CARE CENTER
 INTERIOR FIT-OUT
 HVAC SCHEDULES

Project Number: 12502
 Date: JANUARY 9, 2012
 Drawn by: JRK
 Checked by: KAB

H3.02

Scale: NTS