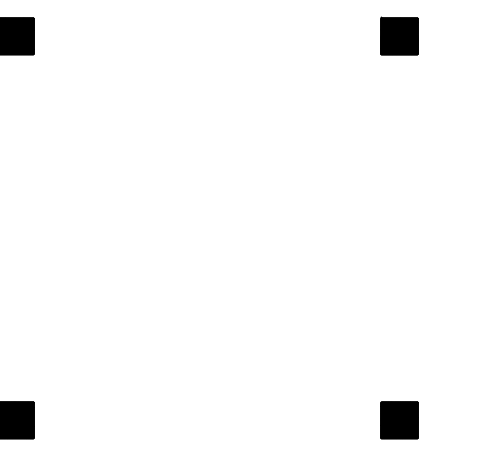




**PORT CITY ARCHITECTURE**

65 NEWBURY STREET  
PORTLAND, ME 04101  
207.761.9000  
info@portcityarch.com  
WWW.PORTCITYARCH.COM



CONSULTANTS



Site Design Associates  
23 Whitney Way  
Topsham, Maine 04086  
207-449-4275

REVISIONS

No.	Description	Date
▲	Addendum #8	7/20/12
▲	Addendum #9	8/16/12
▲	First Floor Redesign	1/09/13

CONSTRUCTION DOCUMENTS

UNIVERSITY OF NEW ENGLAND  
PORTLAND, MAINE

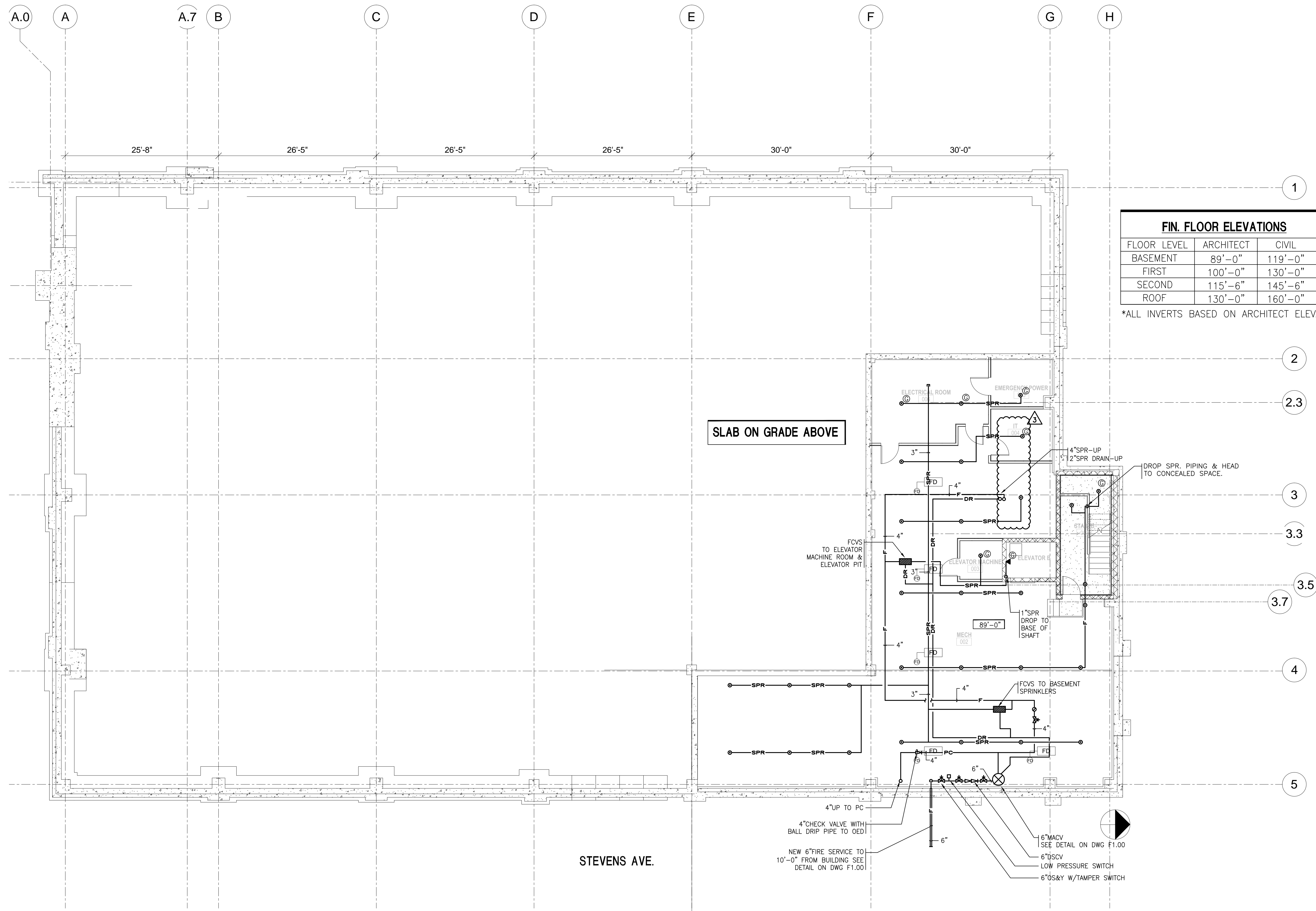
PATIENT CARE CENTER  
INTERIOR FIT-OUT

FIRE PROTECTION BASEMENT & 1ST FLOOR ADD ALTERNATE PLAN

Project Number 12502  
Date JANUARY 9, 2012  
Drawn by SCW  
Checked by LAS

**F1.01**

Scale 1/8" = 1'-0"



FIN. FLOOR ELEVATIONS		
FLOOR LEVEL	ARCHITECT	CIVIL
BASEMENT	89'-0"	119'-0"
FIRST	100'-0"	130'-0"
SECOND	115'-6"	145'-6"
ROOF	130'-0"	160'-0"

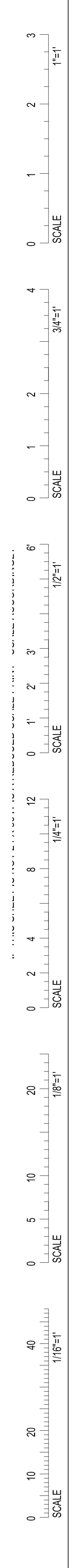
\*ALL INVERTS BASED ON ARCHITECT ELEVATION

SLAB ON GRADE ABOVE

STEVENS AVE.

2 FIRE PROTECTION BASEMENT PLAN  
1/8" = 1'-0"

- NOTES
- 1 PROVIDE SPR HEAD GUARDS ON SPR HEADS IN ELEVATOR MACHINE ROOM, ELEVATOR PIT, ELECTRICAL ROOM, EMERGENCY POWER & IT ROOM.
  - 2 PROVIDE LOW POINT DRAIN AT ALL LOW SPOTS ON SPRINKLER PIPING.
  - 3 212°F SPR HEADS IN ELEVATOR MACHINE ROOM ELEVATOR SHAFT, ELECTRICAL ROOM, EMERGENCY POWER ROOM AND & IT ROOM.
  - 4 ALL SPRINKLER PIPING TO BE CONCEALED THROUGHOUT BUILDING EXCEPT FOR MECHANICAL SPACES.





**PORT CITY ARCHITECTURE**

65 NEWBURY STREET  
PORTLAND, ME 04101  
207.761.9000  
info@portcityarch.com  
WWW.PORTCITYARCH.COM

CONSULTANTS



Site Design Associates  
23 Whitney Way  
Topsham, Maine 04086  
207-449-4275

REVISIONS

No.	Description	Date
▲ Addendum #8		7/30/12
▲ Addendum #9		8/16/12
▲ First Floor Redesign		1/09/13

CONSTRUCTION DOCUMENTS

UNIVERSITY OF NEW ENGLAND  
PORTLAND, MAINE

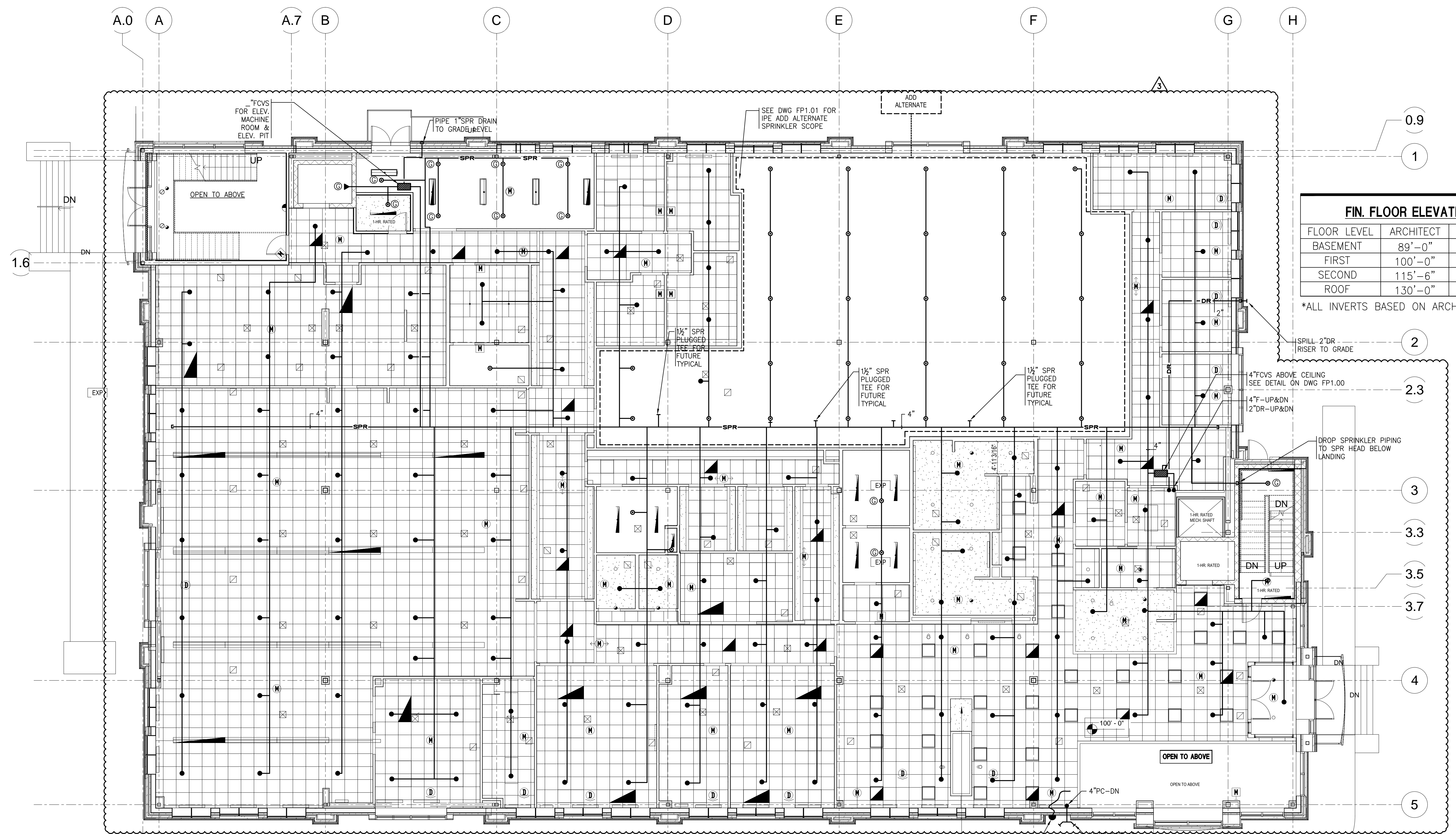
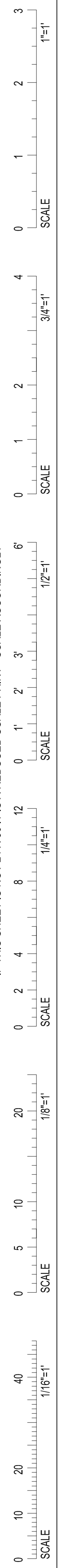
PATIENT CARE CENTER  
INTERIOR FIT-OUT

FIRE PROTECTION  
FIRST FLOOR  
PLAN

Project Number 12502  
Date JANUARY 9, 2012  
Drawn by SCW  
Checked by LAS

**F1.02**

Scale 1/8" = 1'-0"



- NOTES**
- PROVIDE SPR HEAD GUARDS ON SPR HEADS IN ELEVATOR MACHINE ROOM, ELEVATOR PIT, ELECTRICAL ROOM, EMERGENCY POWER & IT ROOM.
  - PROVIDE LOW POINT DRAIN AT ALL LOW SPOTS ON SPRINKLER PIPING.
  - 2 1/2" SPR HEADS IN ELEVATOR MACHINE ROOM ELEVATOR SHAFT, ELECTRICAL ROOM, EMERGENCY POWER ROOM AND IT ROOM.
  - ALL SPRINKLER PIPING TO BE CONCEALED THROUGHOUT BUILDING EXCEPT FOR MECHANICAL SPACES.

1 FIRE PROTECTION FIRST FLOOR PLAN  
1/8" = 1'-0"

