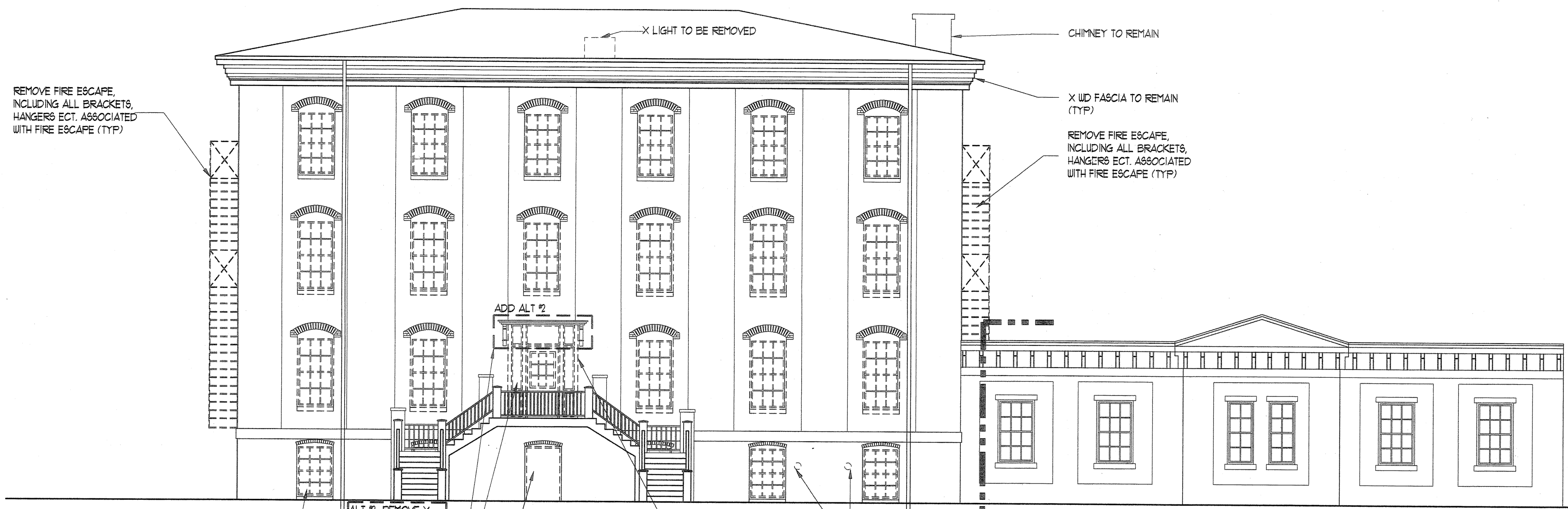
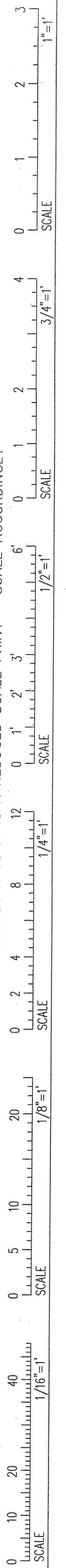


IF THIS SHEET IS NOT 24 X 36 IT IS A REDUCED SCALE PRINT - SCALE ACCORDINGLY



REMOVE EXIST WINDOW AND STORM WINDOW AS REQUIRED U.N.O. (TYP ALL WINDOWS IN GODDARD) SEE - 3,4  
D2.0/D1.0

ALT #2: REMOVE X CANOPY ROOF AS REQ'D FOR MTL ROOF  
X WINDOWS BEYOND AIR LOCK TO REMAIN (SEE PLAN)

REMOVE 2 WINDOWS AND 1 DOOR BEYOND PORCH AS REQUIRED - SEE PLAN

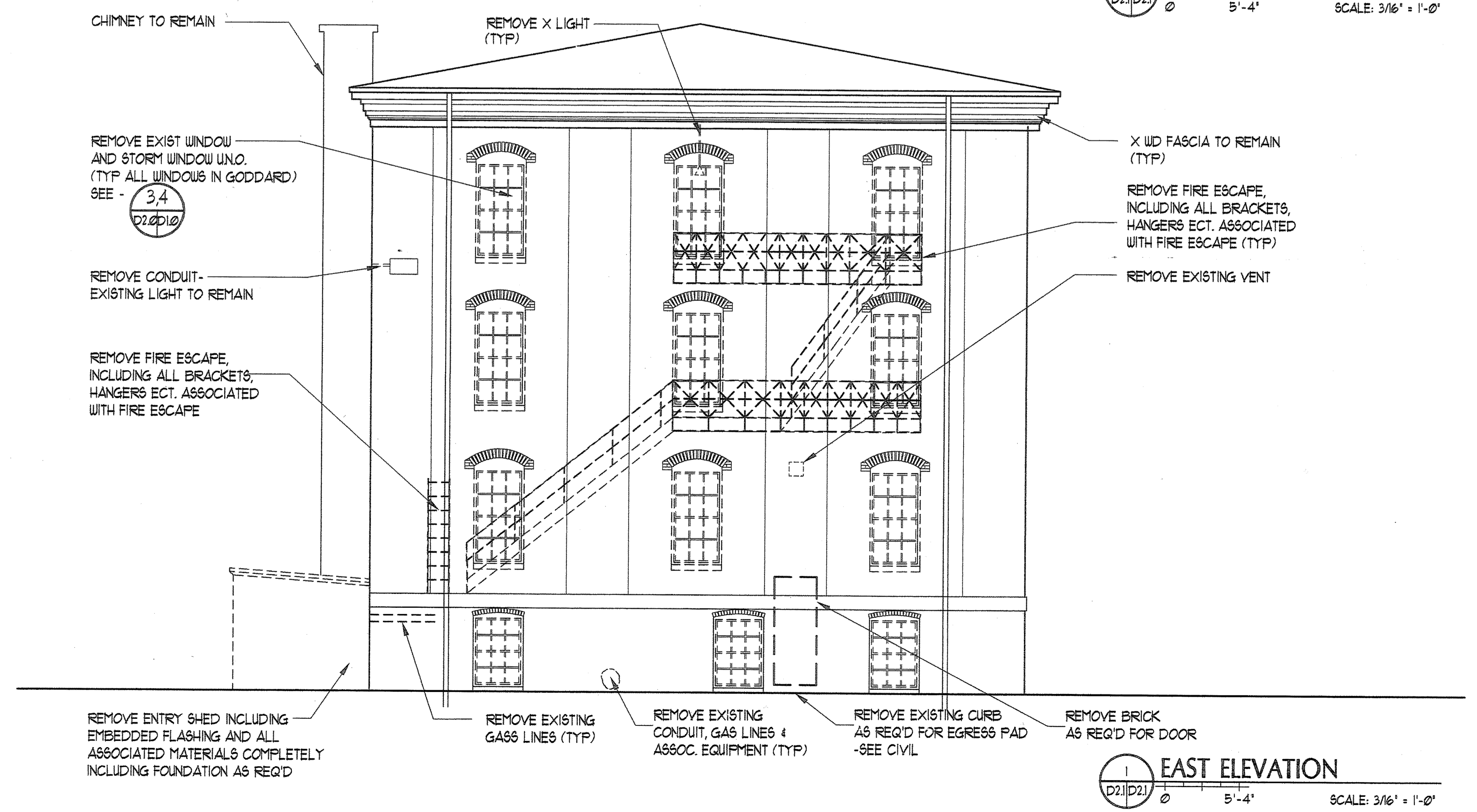
REMOVE AIR LOCK - EXISTING CANOPY AND BRACKETS TO REMAIN

REMOVE MECH & ELEC EQUIP (TYP)

LIMIT OF EXTERIOR WORK

2 NORTH ELEVATION  
D2.1/D2.1 0 5'-4\"/>

**ELEVATION GENERAL DEMO NOTE:**  
 1. REMOVE ALL NAILS, SCREWS, ETC IN THE X BRICK FACADE & PREP FOR REPAIRS - SEE 11.41/11.42  
 2. ALL LIGHTS, UNUSED EQUIPMENT, ANTENNA & ASSOCIATED ON ROOF TO BE REMOVED EXCEPT FOR SAFETY TIE-OFF STANCHIONS OR U.N.O.



REMOVE EXIST WINDOW AND STORM WINDOW U.N.O. (TYP ALL WINDOWS IN GODDARD) SEE - 3,4  
D2.0/D1.0

REMOVE CONDUIT - EXISTING LIGHT TO REMAIN

REMOVE FIRE ESCAPE, INCLUDING ALL BRACKETS, HANGERS ECT. ASSOCIATED WITH FIRE ESCAPE

X WOOD FASCIA TO REMAIN (TYP)  
 REMOVE FIRE ESCAPE, INCLUDING ALL BRACKETS, HANGERS ECT. ASSOCIATED WITH FIRE ESCAPE (TYP)  
 REMOVE EXISTING VENT

REMOVE ENTRY SHED INCLUDING EMBEDDED FLASHING AND ALL ASSOCIATED MATERIALS COMPLETELY INCLUDING FOUNDATION AS REQ'D

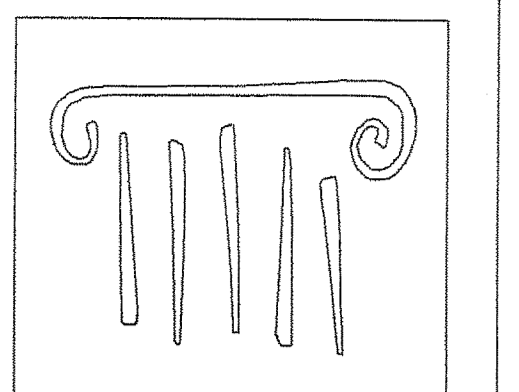
REMOVE EXISTING GAS LINES (TYP)

REMOVE EXISTING CONDUIT, GAS LINES & ASSOC. EQUIPMENT (TYP)

REMOVE EXISTING CURB AS REQ'D FOR EGRESS PAD - SEE CIVIL

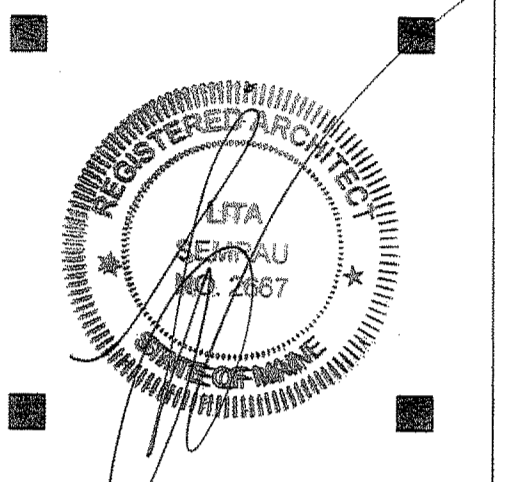
REMOVE BRICK AS REQ'D FOR DOOR

1 EAST ELEVATION  
D2.1/D2.1 0 5'-4\"/>



PORT CITY ARCHITECTURE

65 NEWBURY STREET  
 PORTLAND, ME 04101  
 207.761.9000  
 fax: 207.761.2010  
 info@portcityarch.com



CONSULTANTS:



ttl-architects inc.

GODDARD RENOVATION EXTERIOR SHELL

UNIVERSITY of NEW ENGLAND  
 Portland, Maine

NO.	DATE	DESCRIPTION
1	--	Design Review

REVISIONS

Date Issued: NOVEMBER 17, 2010

Project Number: 10538

Drawing Scale: 3/16" = 1'-0"

SHEET NAME	
ELEVATION DEMO PLANS	
Drawn By	JAF, MY
Checked By	LAS

D2.1

PERMIT SET