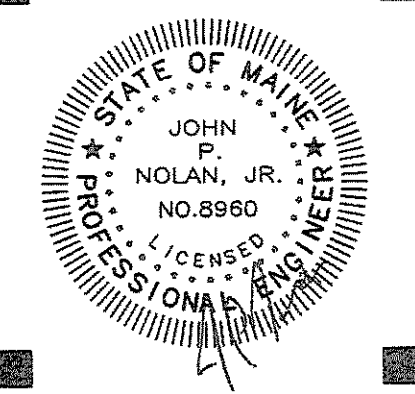


**PORT CITY
ARCHITECTURE**

65 NEWBURY STREET
PORTLAND, ME 04101
207.761.9000
fax: 207.761.2010
lita@portcityarch.com



Titan Mechanical, Inc.
Design Build Engineering - Mechanical Contracting
P.O. Box 3927 / 232 Riverside Industrial Parkway
Portland, Maine 04104
Ph. (207) 878-5223 Fax. (207) 878-5235

**UNIVERSITY OF NEW ENGLAND
COLLEGE OF
PHARMACY
CLASSROOMS**

716 STEVENS AVENUE, PORTLAND, ME

#	DATE	DESCRIPTION

DATE ISSUED 3/11/09
PROJECT NUMBER 08518

SHEET NAME
**MECHANICAL
SCHEDULES**

DRAWN BY
CJM
CHECKED BY
JPN
M3.0

PERMIT SET - NOT FOR CONSTRUCTION

COPYRIGHT: Reuse or reproduction of the contents of this document is not permitted without written permission of PORT CITY ARCHITECTURE PA

AIR HANDLER UNIT SCHEDULE

TAG	AREA SERVED	V/PH/PH	MOCF (AMPS)	MCA	HP	WEIGHT (LBS)	CFM	ESP	% O.A.	COOLING										MODEL	REMARKS		
										ENT	LWT	EAT	LAT	OUTPUT (MBH)	ENT	LWT	EDB	ENB	LWB			LDB	TONS
AHU-1	CLASSROOMS	460/60/3	15	11	-	4200	4000	0.75	28	180	160	-	-	66	-	-	80	67	57	59	14.3	ANNEX AIR ERP-1-04-HW-H-C	-
AHU-2	LOCKER/ HALL	460/60/3	-	-	1.0	800	1200	0.5	17	180	160	60	83	30	45	57	80	67	57	59	3.0	TRANE MCCB003	-
AHU-3	CLEAN ROOM	460/60/3	-	-	5.0	1900	4000	0.5	10	180	160	64	89	107	45	60	80	67	57	59	14.0	TRANE MCCB010	-

FAN SCHEDULE

TAG	SERVES	CFM	SP (W.G.)	V/PH/PH	HP	WATTS	RPM	LXWXH (INCHES)	WEIGHT (POUNDS)	MOD. NO.	CONTROLS	REMARKS
EF-1	VAULT	300	0.25	115/1/60	-	120	2350	-	-	FANTECH FG 6M	TIME CLOCK	INLINE
EF-2	BATH EXHAUST	875	0.25	115/1/60	-	301	2900	-	-	FANTECH FG 12XL	TIME CLOCK	INLINE

VAV BOX SCHEDULE

TAG	SERVES	MAX CFM	MIN CFM	INLET DIA. (INCHES)	HEATING COIL (MBH)	COIL (GPM)	MODEL SIZE	REMARKS
VAV-1-1	CLASSROOM 024	1350	675	14"	-	N/A	-	-
VAV-1-2	CLASSROOM 024	900	450	12"	-	N/A	-	-
VAV-1-3	CLASSROOM 028	1800	900	16"	-	N/A	-	-
VAV-2-1	SITTING	320	160	8"	-	N/A	-	-
VAV-2-2	LOCKER/ HALL	740	370	10"	-	N/A	-	-
VAV-2-2	STUDY	135	70	6"	-	N/A	-	-

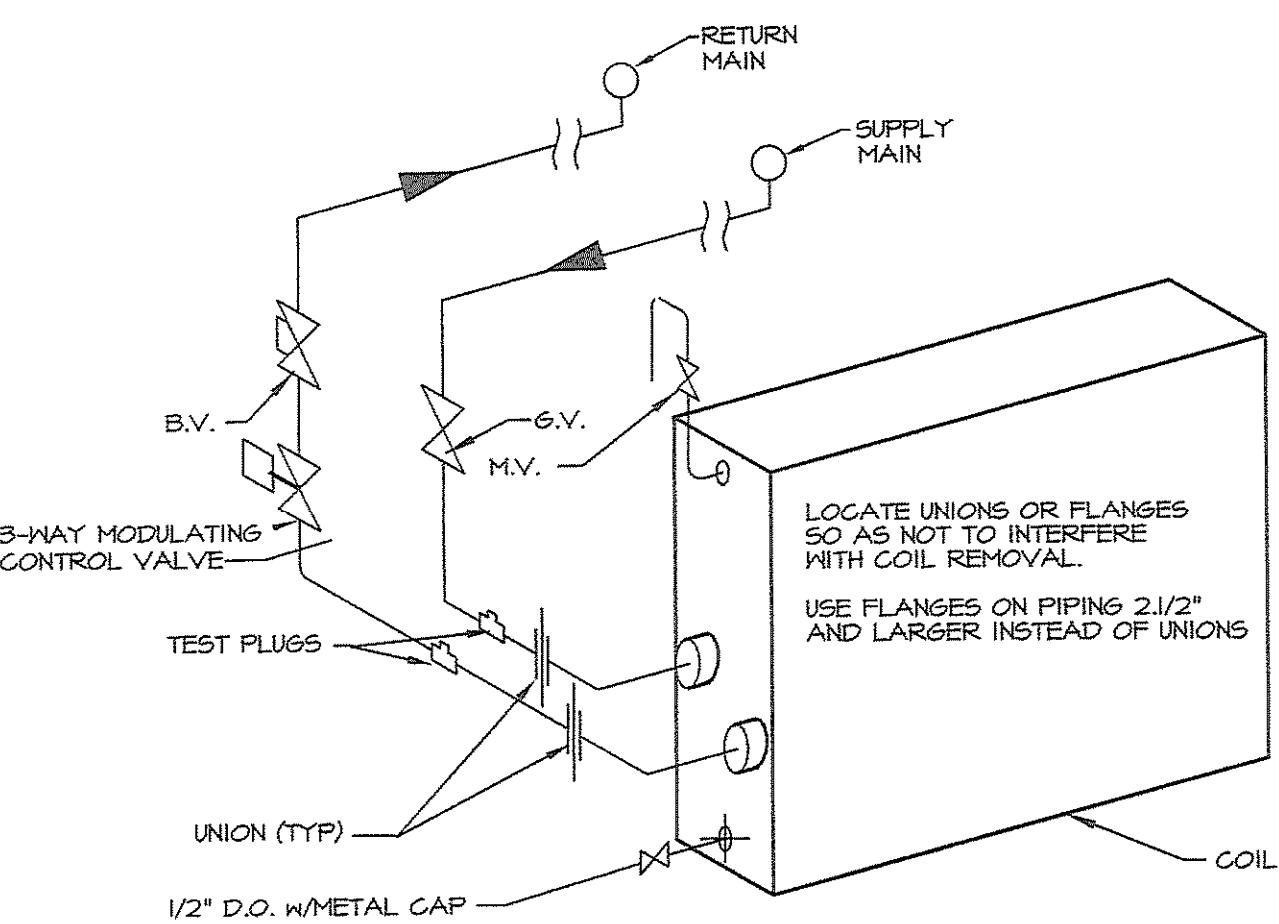
GRILLES, REGISTERS, & DIFFUSER SCHEDULE

TAG	NECK (INCHES)	FACE SIZE (INCHES)	CFM	SP (W.G.)	THROW (FEET)	REMARKS
SD-1	8"φ	24"x24"	0-250	-	-	ANEMOSTAT EPL
SD-2	10"φ	24"x24"	251-350	-	-	ANEMOSTAT EPL
SD-3	12"φ	24"x24"	351-450	-	-	ANEMOSTAT EPL
SD-4	10"φ	48"x24"	0-250	-	-	ANEMOSTAT MV-1
RG-1	-	48"x24"	0-2000	-	-	ANEMOSTAT X3HD
TG-1	-	24"x24"	0-750	-	-	ANEMOSTAT X3HD
TG-2	-	48"x24"	751-2000	-	-	ANEMOSTAT X3HD
EG-1	-	12x12"	0-150	-	-	ANEMOSTAT X3HD
EG-1	-	24"x24"	0-375	-	-	ANEMOSTAT X3HD

NOTES: ALL GRD'S MAX NC=30
ALL UNITS SHALL BE ANEMOSTAT OR EQUAL BY KRUEGAR
ALL SD'S SHALL HAVE EQUALIZING VANES, FLAT WHITE FINISH, AND BE 4-WAY BLOW PATTERN.

SYMBOLS AND ABBREVIATIONS

AC	AIR CONDITIONING	SW	SOIL, WASTE BELOW FLOOR
AFF	ABOVE FINISH FLOOR	V	PLUMBING VENT PIPING
AHU	AIR HANDLING UNIT	—	DOMESTIC COLD WATER
APD	AIR PRESSURE DROP	—	DOMESTIC HOT WATER
AV	AUTOMATIC VENT	—	DOMESTIC HOT WATER REGIRC.
BD	BACKDRAFT DAMPER	—	—
BV	BALANCING VALVE	—	—
CC	COOLING COIL	G	GAS
CM	DOMESTIC COLD WATER	—	—
CU	CONDENSING UNIT	RL	REFRIGERANT LIQUID PIPING
DIFF	DIFFUSER	RS	REFRIGERANT SUCTION PIPING
DSD	DUCT SMOKE DETECTOR	—	—
EAT	ENTERING AIR TEMPERATURE	V	VENT PIPING
EC	ELECTRICAL CONTRACTOR	—	—
EGG	EXHAUST CEILING GRILLE	—	—
EF	EXHAUST FAN	—	—
EG	EXHAUST GRILLE	—	—
ESP	EXTERNAL STATIC PRESSURE	—	—
GC	GENERAL CONTRACTOR	—	—
GV	GATE VALVE	—	—
HX	DOMESTIC HOT WATER	—	—
HVAC	HEATING, VENTILATING AND AIR CONDITIONING	—	—
LAT	LEAVING AIR TEMPERATURE	—	—
MBH	1000 BTU/HR	—	—
MD	MANUAL DAMPER	—	—
MOD	MOTOR OPERATED DAMPER	—	—
NTS	NOT TO SCALE	—	—
OA	OUTDOOR AIR	—	—
PC	PLUMBING CONTRACTOR	—	—
PRV	PRESSURE REDUCING VALVE	—	—
RA	RETURN AIR	—	—
RG	RETURN GRILLE	—	—
RHW	HOT WATER RE-CIRC	—	—
RL	REFRIGERANT LIQUID	—	—
RS	REFRIGERANT SUCTION	—	—
RR	RETURN REGISTER	—	—
RTU	ROOF-TOP UNIT	—	—
RV	RELIEF VALVE	—	—
S	SANITARY	—	—
SA	SUPPLY AIR	—	—
SD	SUPPLY DIFFUSER	—	—
SG	SUPPLY GRILLE	—	—
SV	SAFETY VALVE	—	—
T	THERMOMETER	—	—
TG	TRANSFER GRILLE	—	—
TCP	TEMPERATURE CONTROL PANEL	—	—
TSP	TOTAL STATIC PRESSURE	—	—
TSTAT	THERMOSTAT	—	—
UC	UNDERCUT	—	—
UG	UNDERGROUND	—	—
V	VENT	—	—
VI	VIBRATION ISOLATOR	—	—
—	THERMOSTAT	—	—
—	CONNECT TO EXISTING	—	—
—	MANUAL DAMPER	—	—
—	FLEXIBLE DUCT	—	—
—	SUPPLY DUCT UP	—	—
—	SUPPLY DUCT DOWN	—	—
—	RETURN DUCT UP	—	—
—	RETURN DUCT DOWN	—	—
—	SUPPLY DIFFUSER	—	—
—	RETURN/EXHAUST REGISTER	—	—



THIS DETAIL IS GENERIC AND IS INTENDED TO INDICATE THE ARRANGEMENT OF VALVING. REFER TO PLANS FOR PIPE SIZING.
HOT/ CHILLED WATER COIL PIPING
NO SCALE