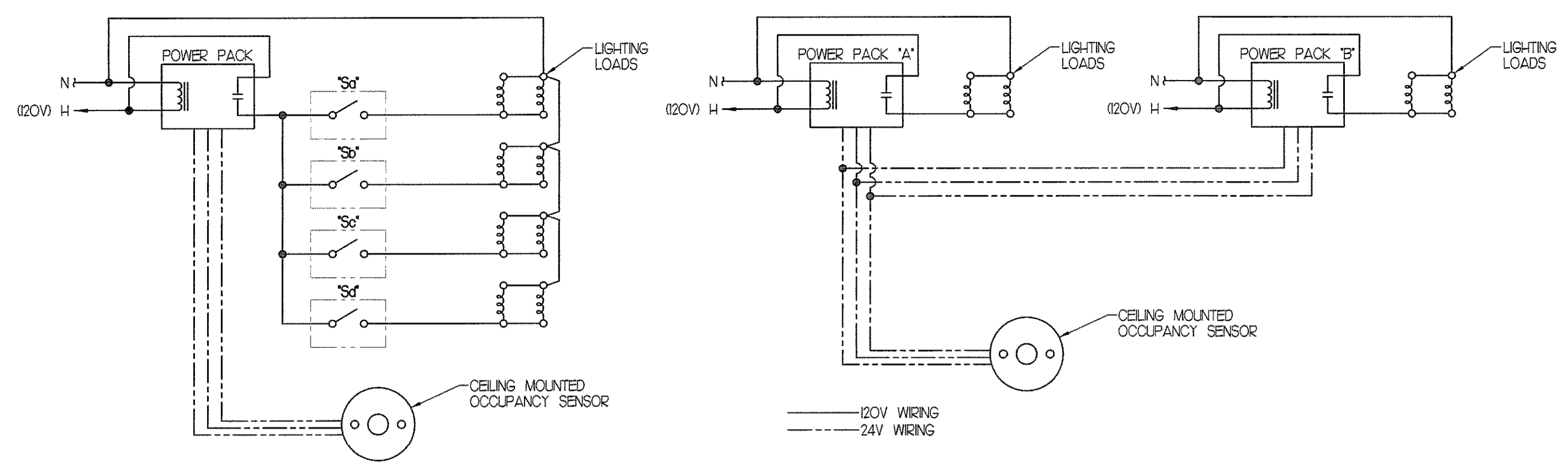
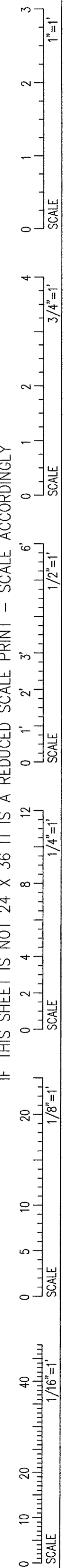
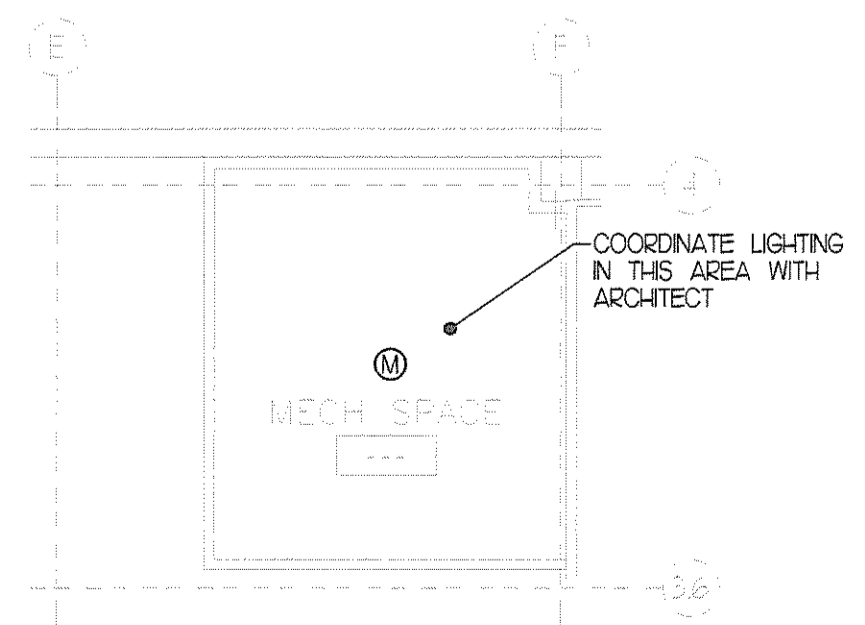


IF THIS SHEET IS NOT 24 X 36 IT IS A REDUCED SCALE PRINT - SCALE ACCORDINGLY

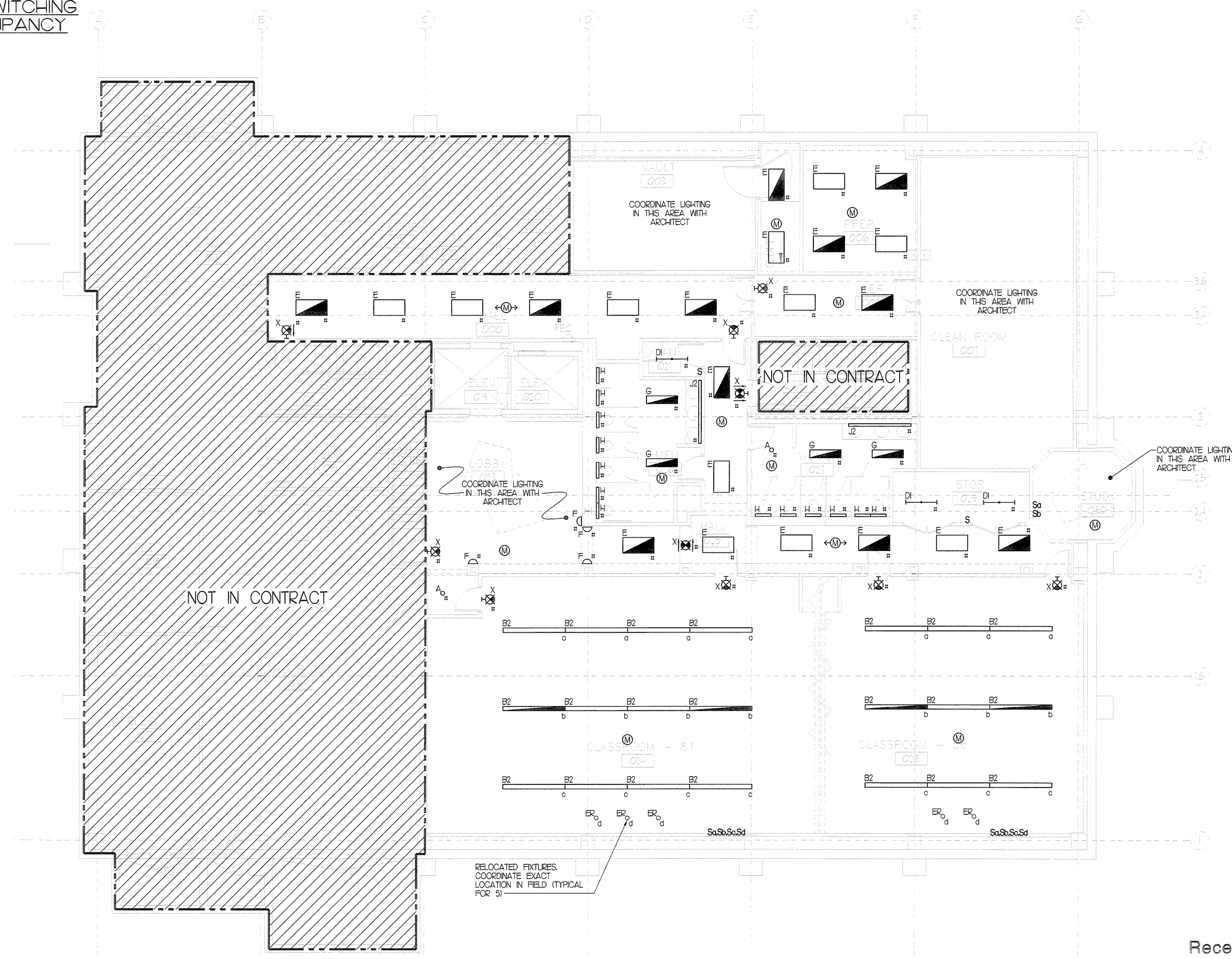


CLASSROOM OCCUPANCY SENSOR W/ 120V. TOGGLE SWITCHES
SCALE: NOT TO SCALE

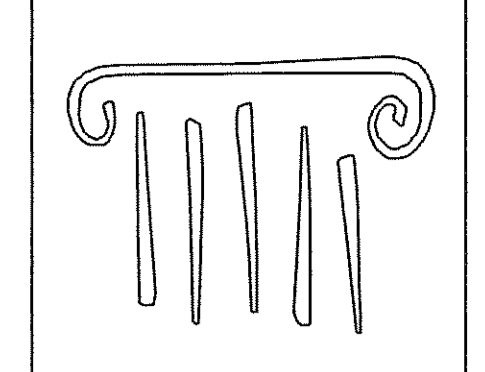
DUAL CIRCUIT SWITCHING W/ SINGLE OCCUPANCY SENSOR
SCALE: NOT TO SCALE



MECHANICAL SPACE LIGHTING PLAN
SCALE: 1/8" = 1'-0"



LOWER LEVEL LIGHTING PLAN
SCALE: 1/8" = 1'-0"



PORT CITY ARCHITECTURE

65 NEWBURY STREET
PORTLAND, ME 04101
207.761.9000
fax: 207.761.2010
lita@portcityarch.com



VINCENT A. DIORIO, INC.
CONSULTING ENGINEERS
89 Access Road, Suite Eighteen
Newport, Massachusetts 02458
tel: (978) 255-9754 fax: (978) 255-9755 email: vadi@vadieng.com

**UNIVERSITY OF NEW ENGLAND
COLLEGE OF
PHARMACY
CLASSROOMS**

716 STEVENS AVENUE, PORTLAND, ME

#	DATE	DESCRIPTION
	3/11/09	Date Issued
	06506	Project Number

SHEET NAME	
ELECTRICAL LOWER FLOOR LIGHTING PLAN	
Drawn By	CDO
Checked By	VAD
E02	

Received
MAR 16 2009
Favreau Electric

BID DOCUMENTS - NOT FOR CONSTRUCTION