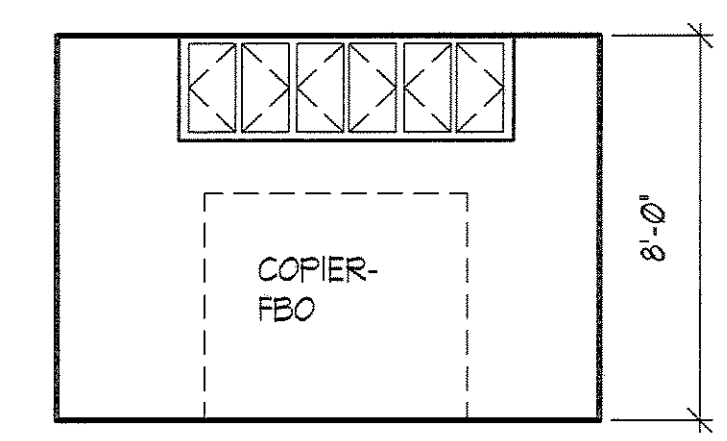
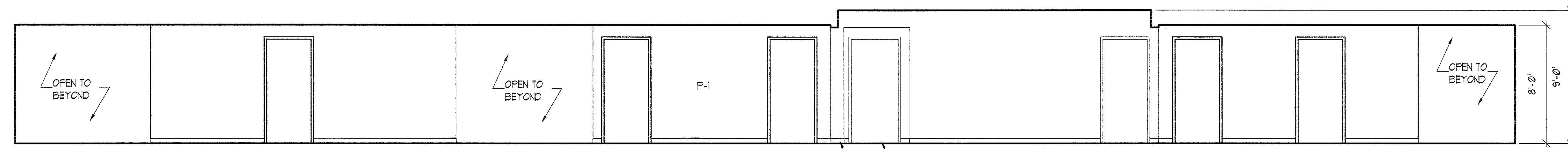
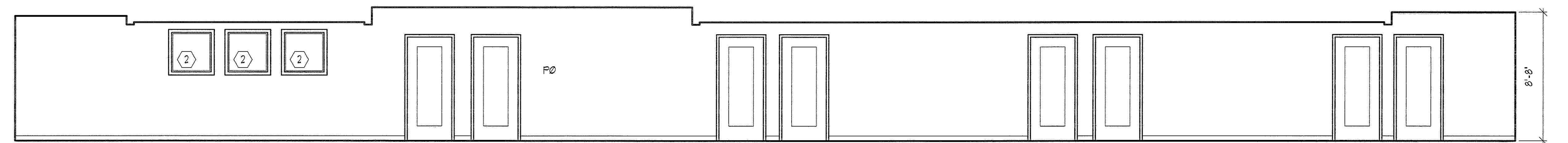
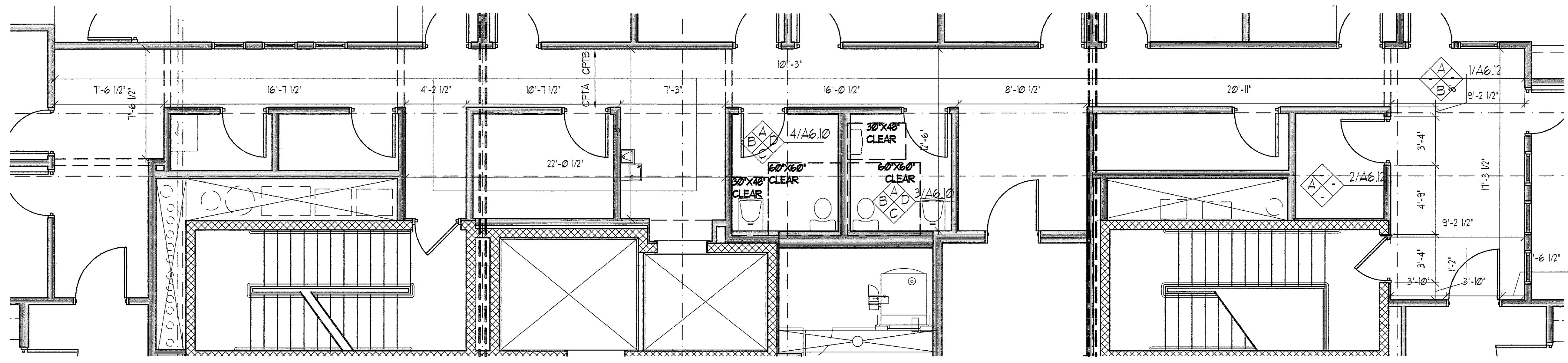
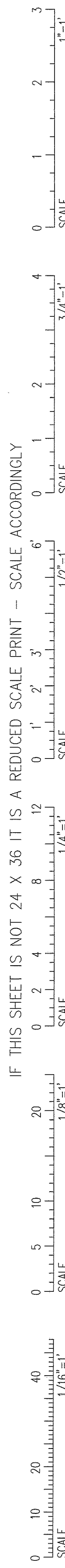
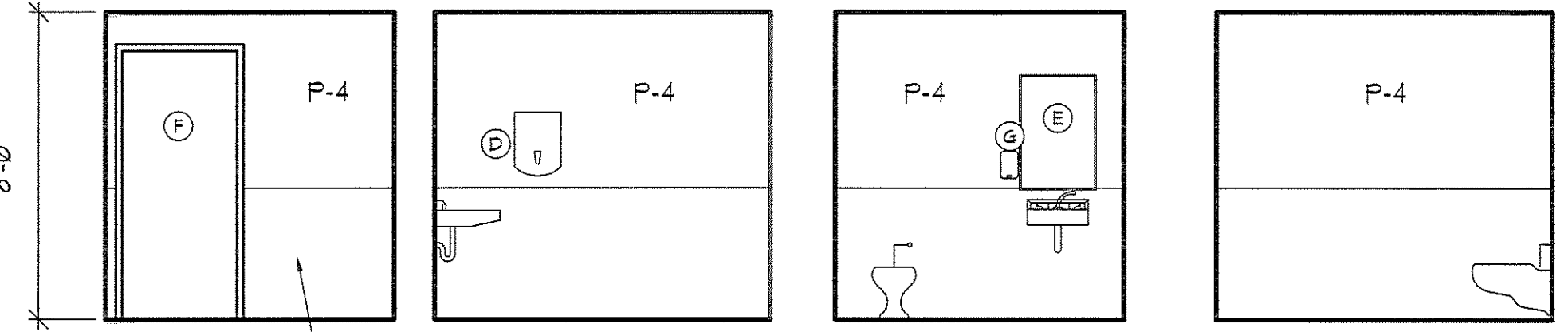
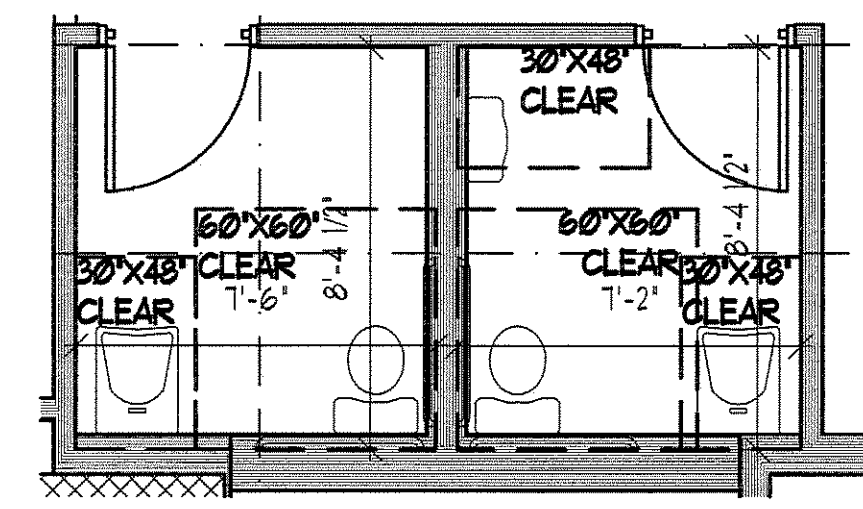


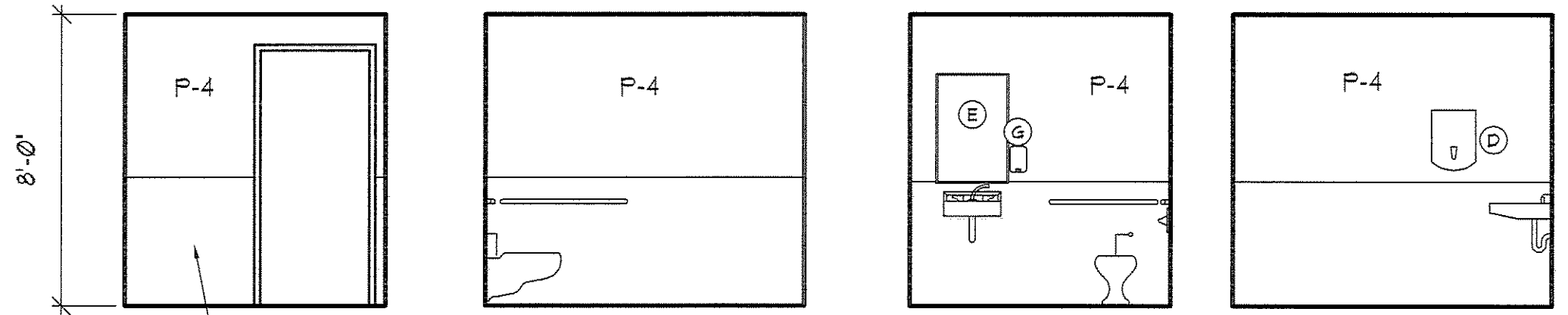
IF THIS SHEET IS NOT 24 X 36 IT IS A REDUCED SCALE PRINT - SCALE ACCORDINGLY



2 306 COPIER
SCALE: 1/4" = 1'-0"

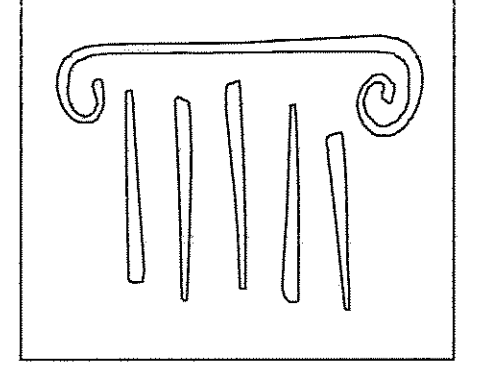


3 MENS BATHROOM
SCALE: 1/4" = 1'-0"



4 WOMEN'S BATHROOM
SCALE: 1/4" = 1'-0"

BID SET - NOT FOR CONSTRUCTION



PORT CITY ARCHITECTURE

65 NEWBURY STREET
PORTLAND, ME 04101
207.761.9000
fax: 207.761.2010
lita@portcityarch.com

JACOBS CONSULTANCY
500 Laboratory Planning Practice

VANZELM ENGINEERS
VANZELM HEYWOOD & SHADFORD, INC.

BECKER
Structural engineers, Inc.

SYTDesign CONSULTANTS
CIVIL ENGINEERING & LANDSCAPE ARCHITECTURE

ALLIED/COOK CONSTRUCTION

Favreau ELECTRIC

Titan Mechanical
HVAC, Mechanical, Electrical, Plumbing

UNIVERSITY OF NEW ENGLAND

COLLEGE OF PHARMACY

76 STEVENS AVENUE, PORTLAND, ME

#	DATE	DESCRIPTION
		BID SET
	02/06/08	Date Issued
	06506	Project Number

FREESTANDING SHEET NAME
INTERIOR ELEVATIONS

Drawn By
EC, AY, EK

Checked By
LAS

A6.13

COPYRIGHT: Reuse or reproduction of the contents of this document is not permitted without written permission of PORT CITY ARCHITECTURE PA