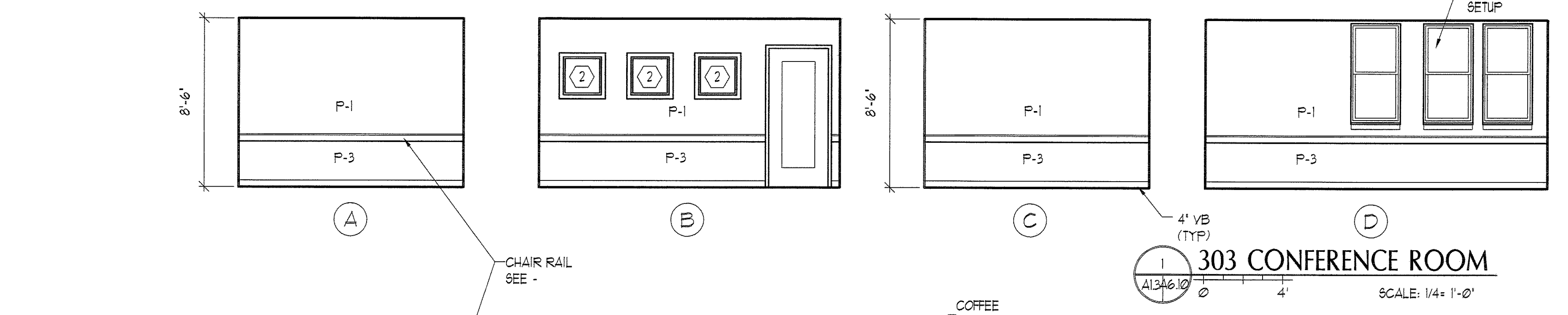
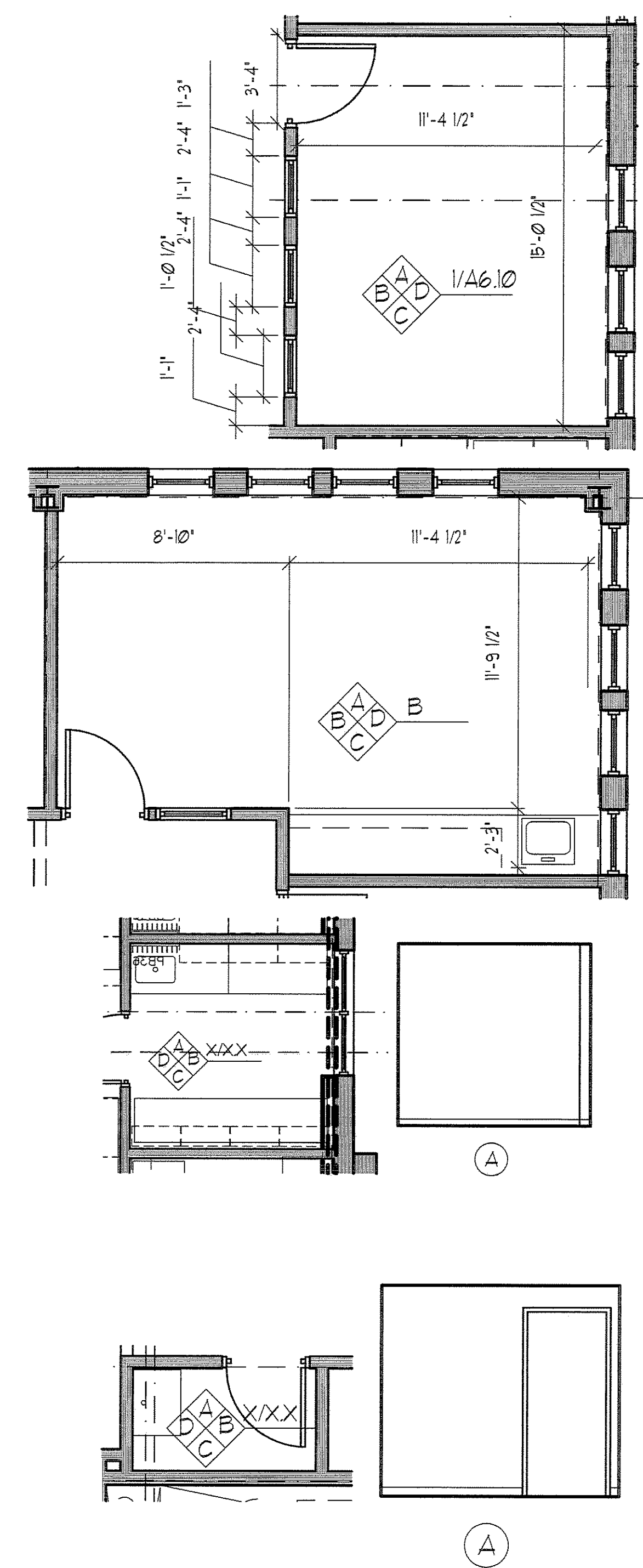
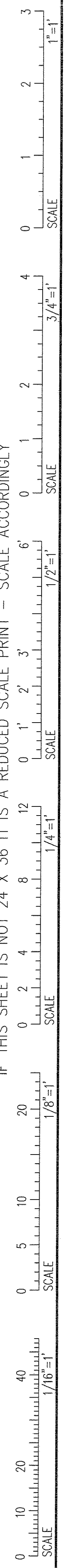
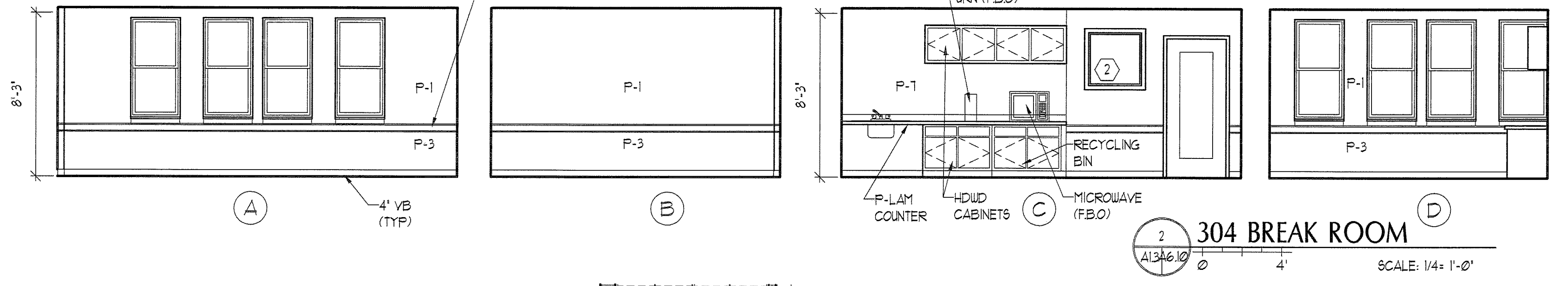


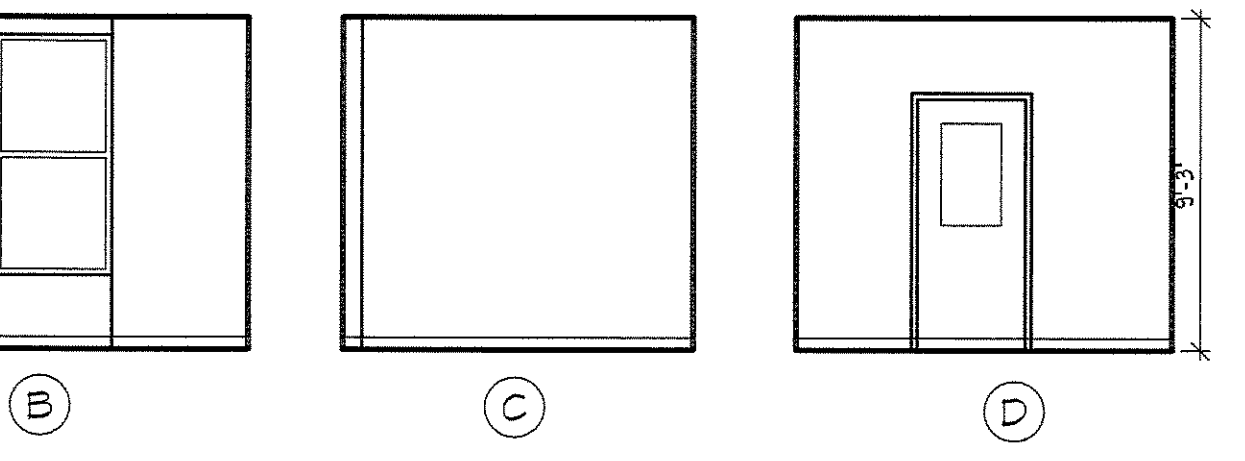
IF THIS SHEET IS NOT 24 X 36 IT IS A REDUCED SCALE PRINT - SCALE ACCORDINGLY



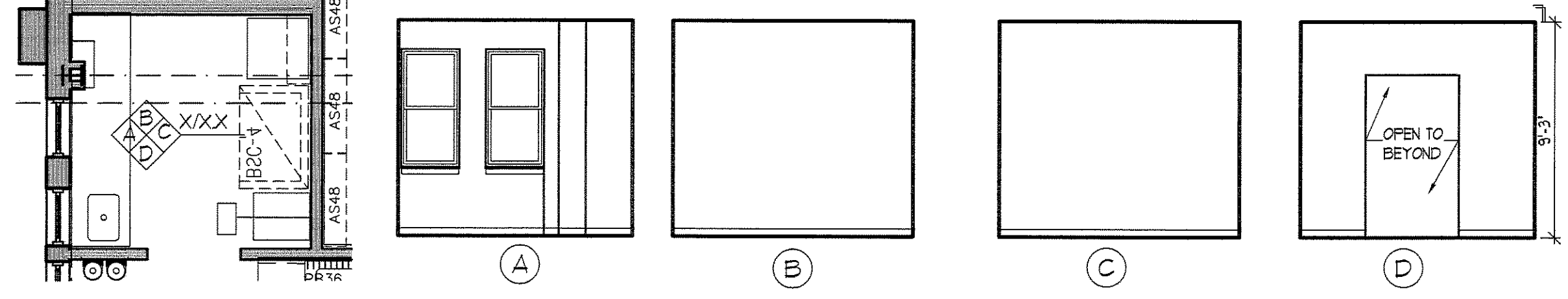
1 303 CONFERENCE ROOM
SCALE: 1/4" = 1'-0"



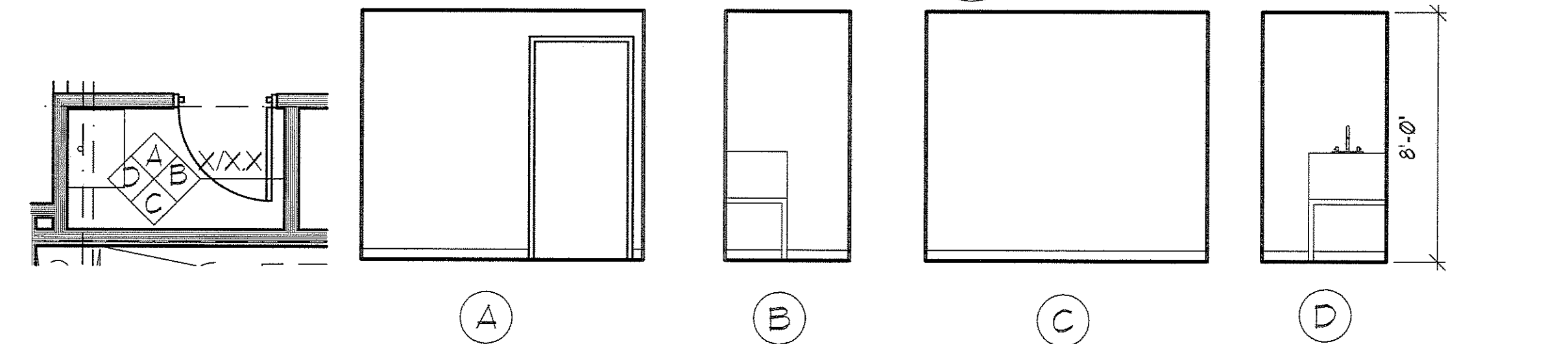
2 304 BREAK ROOM
SCALE: 1/4" = 1'-0"



6 336 PROCEDURE ROOM
SCALE: 1/4" = 1'-0"

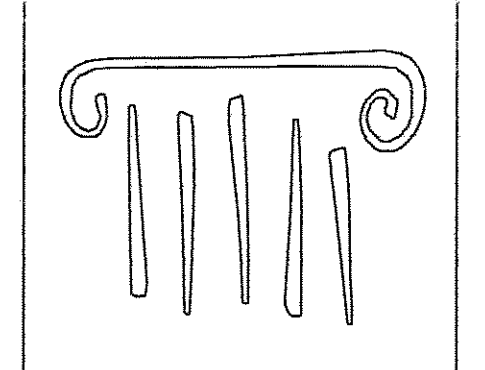


3 328 BSC
SCALE: 1/4" = 1'-0"



1 TYP JANITOR CLOSET
SCALE: 1/4" = 1'-0"

4 335 BSC
SCALE: 1/4" = 1'-0"



PORT CITY ARCHITECTURE

65 NEWBURY STREET
PORTLAND, ME 04101
207.761.9000
fax: 207.761.2010
lita@portcityarch.com

JACOBS CONSULTANCY
OPR Laboratory Planning Practice

VANZELM ENGINEERS
VANZELM, BETHWOOD & BRADFORD, INC.

BECKER structural engineers, inc.

SYTDesign CONSULTANTS
CIVIL ENGINEERING & LANDSCAPE ARCHITECTURE

ALLIED/COOK CONSTRUCTION

Faireau ELECTRIC

Titan Mechanical
MECHANICAL ENGINEERING - INDUSTRIAL CONTRACTORS

UNIVERSITY OF NEW ENGLAND

COLLEGE OF PHARMACY

716 STEVENS AVENUE, PORTLAND, ME

#	DATE	DESCRIPTION
		BID SET
	02/08/08	Date Issued
	06506	Project Number

FREESTANDING SHEET NAME

INTERIOR ELEVATIONS

Drawn By
EC, AM, EK

Checked By
LAS

A6.12

BID SET - NOT FOR CONSTRUCTION