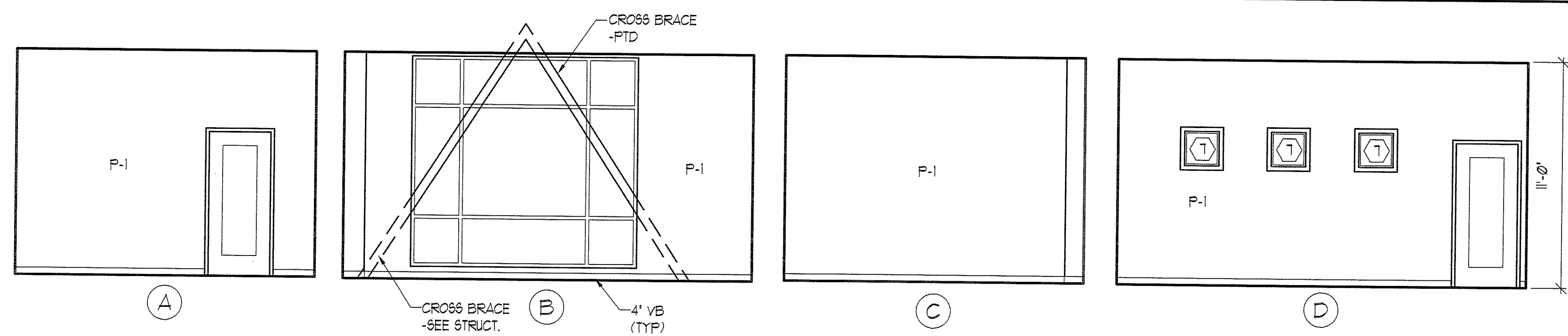
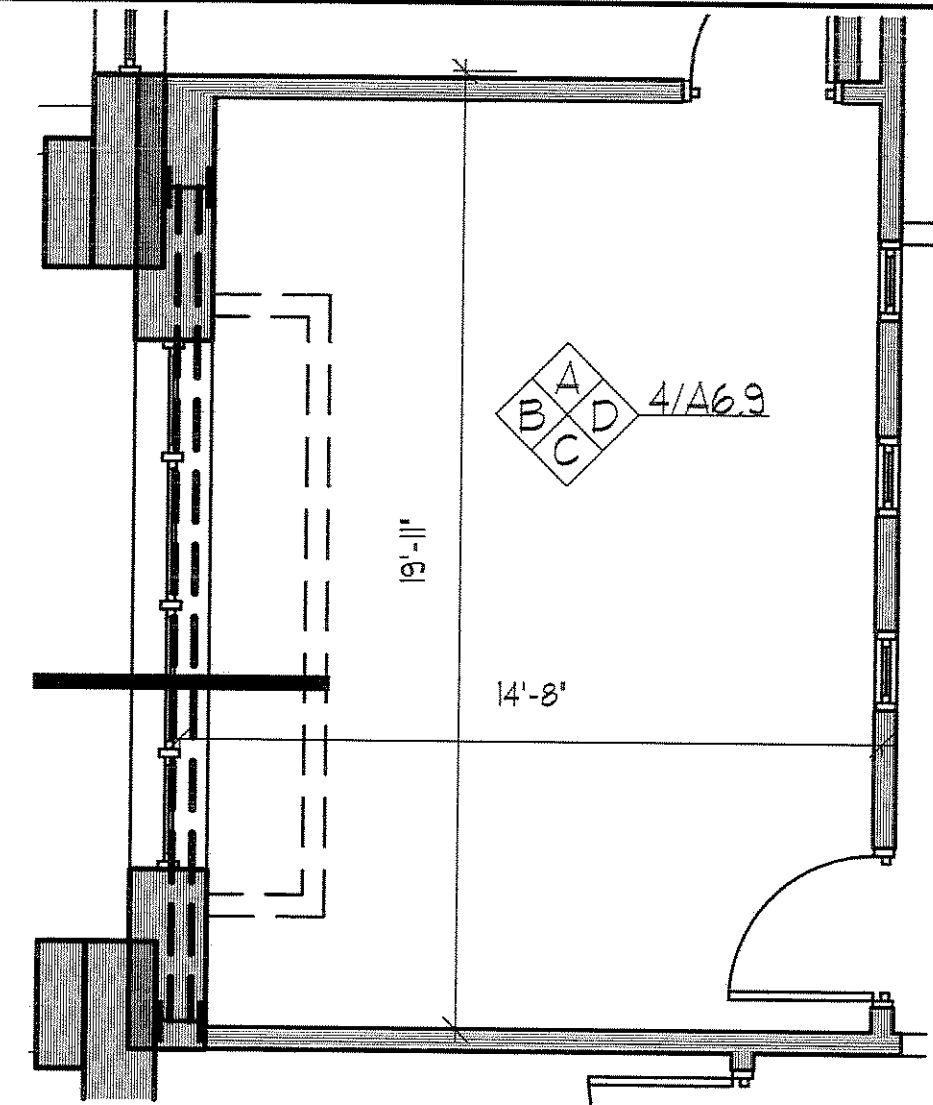
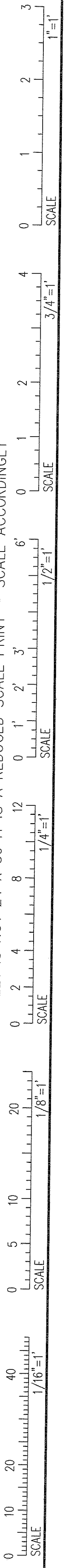
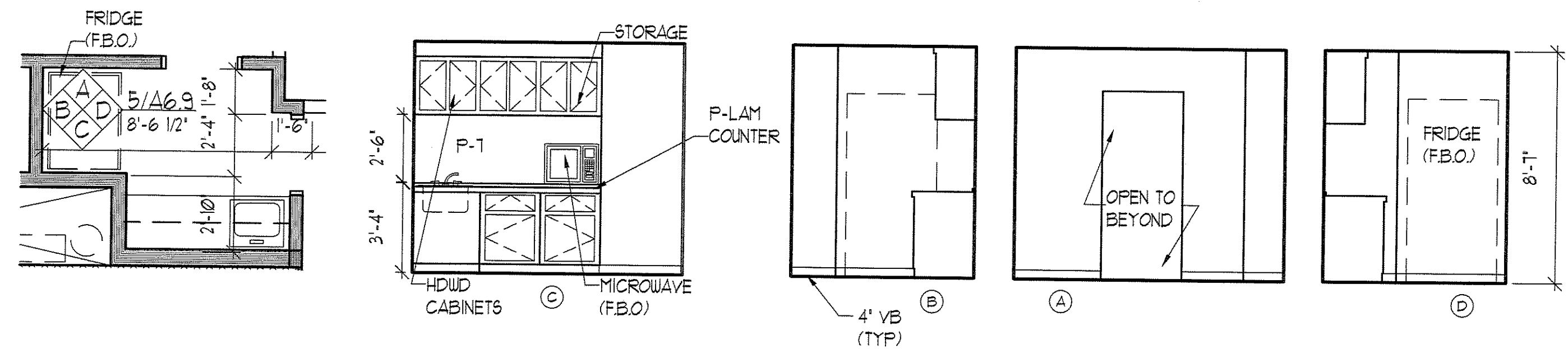
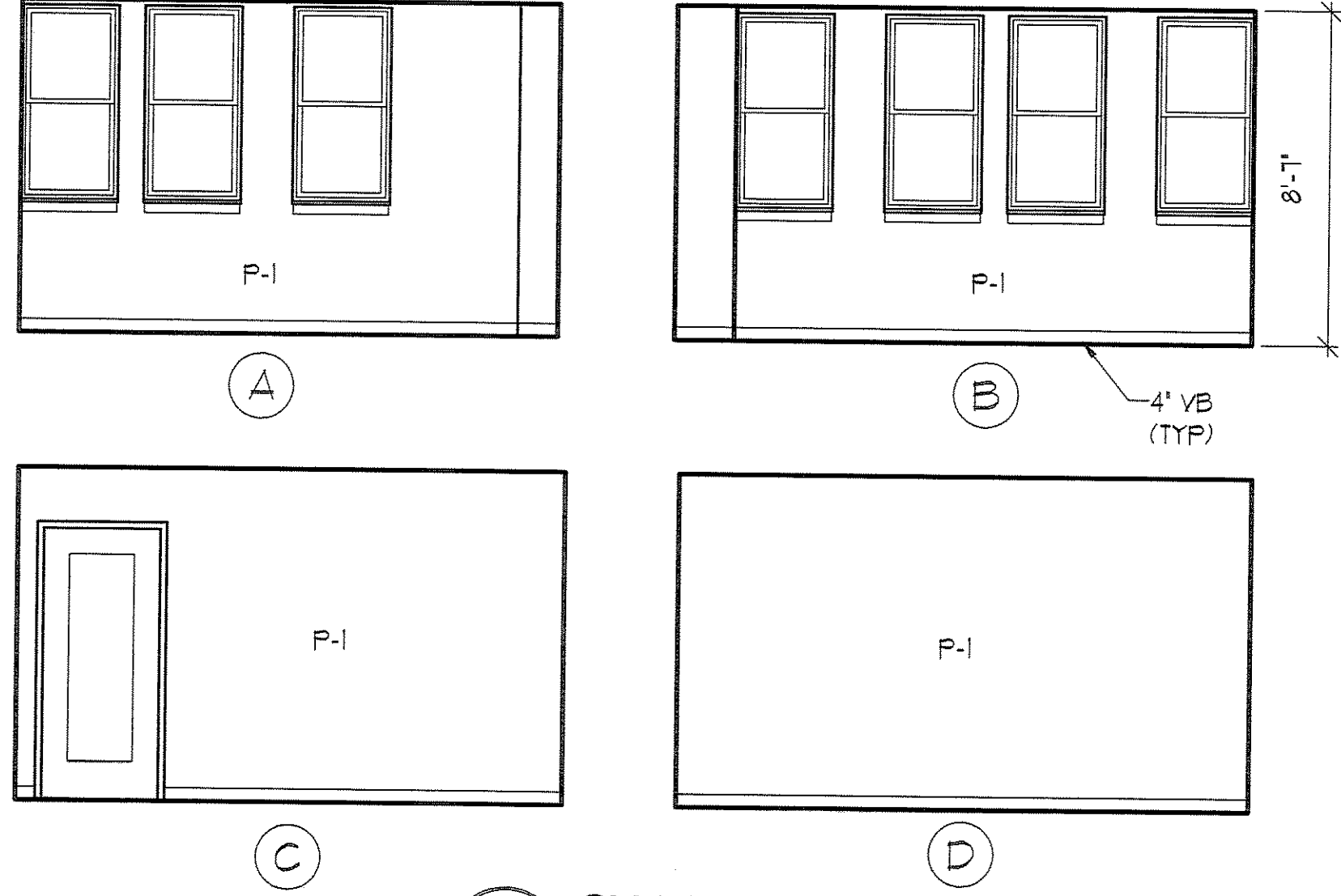
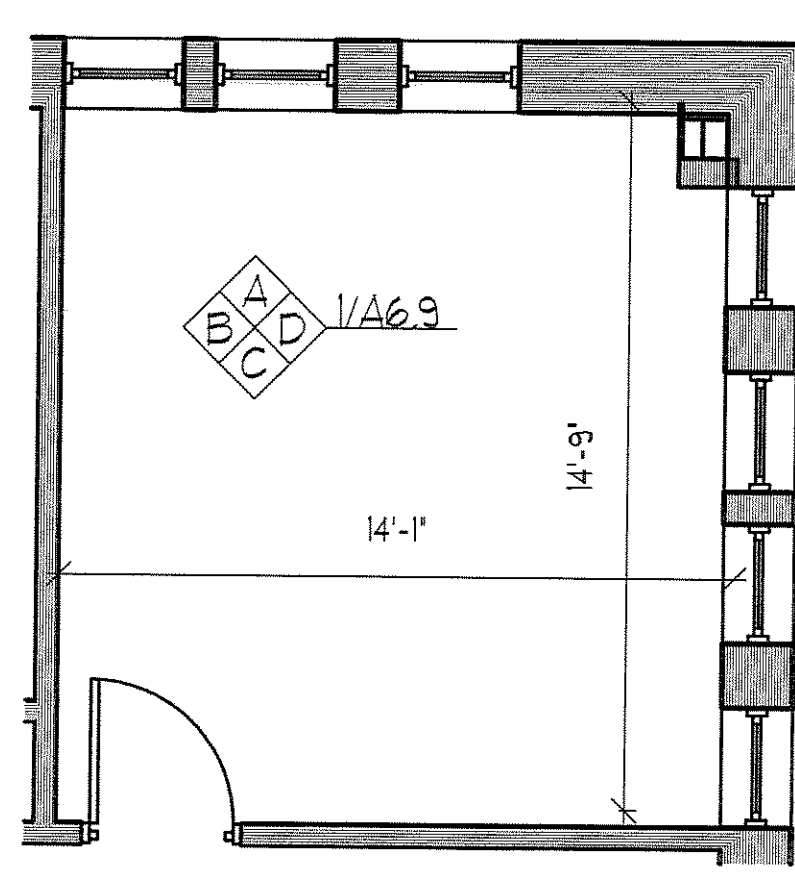


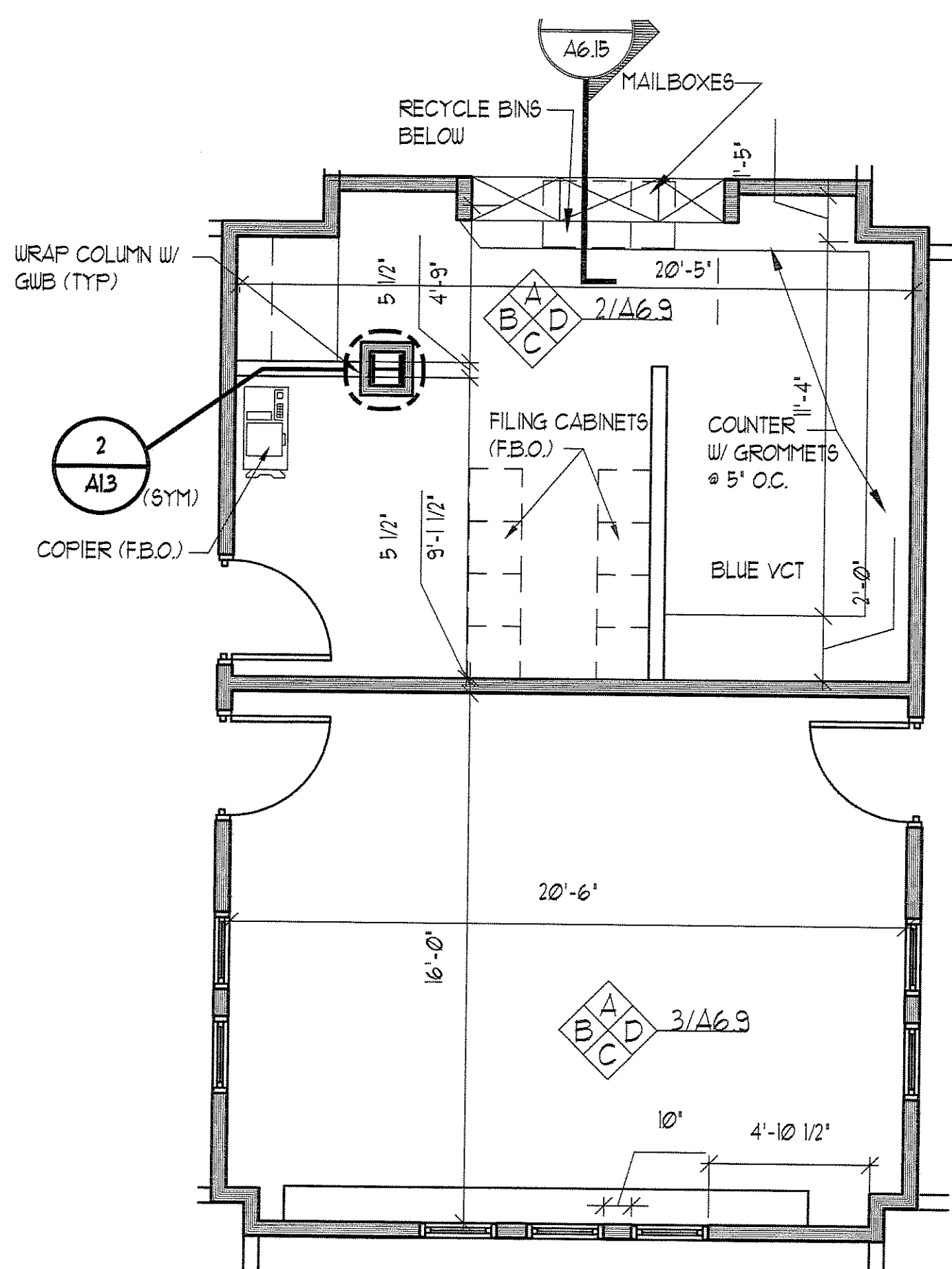
IF THIS SHEET IS NOT 24 X 36 IT IS A REDUCED SCALE PRINT - SCALE ACCORDINGLY



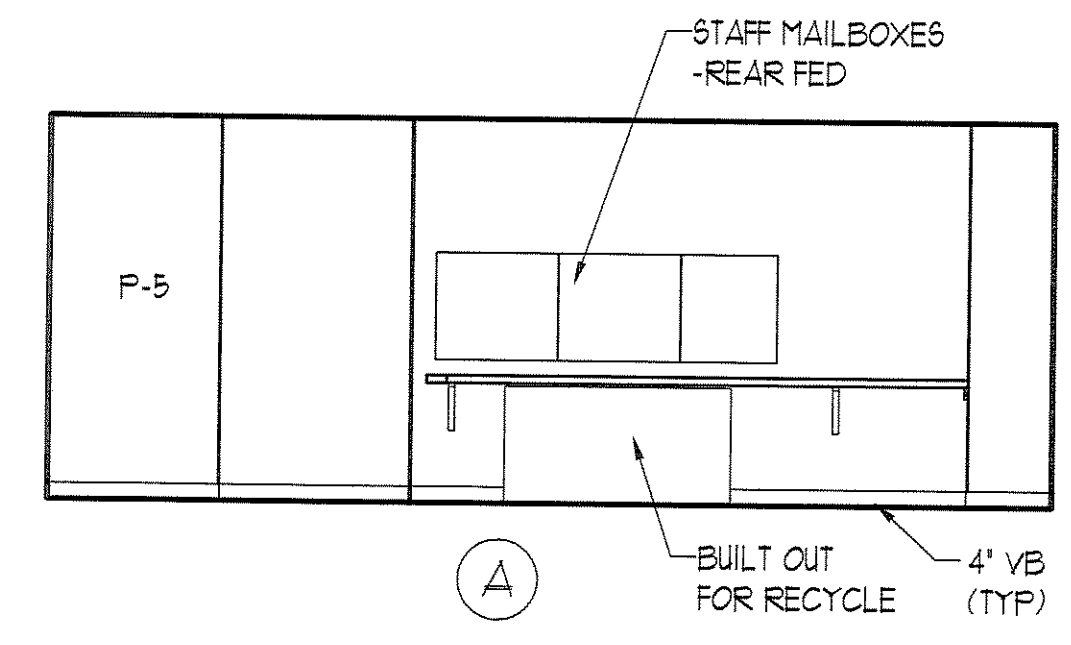
242 DEPARTMENT
SCALE: 1/4" = 1'-0"



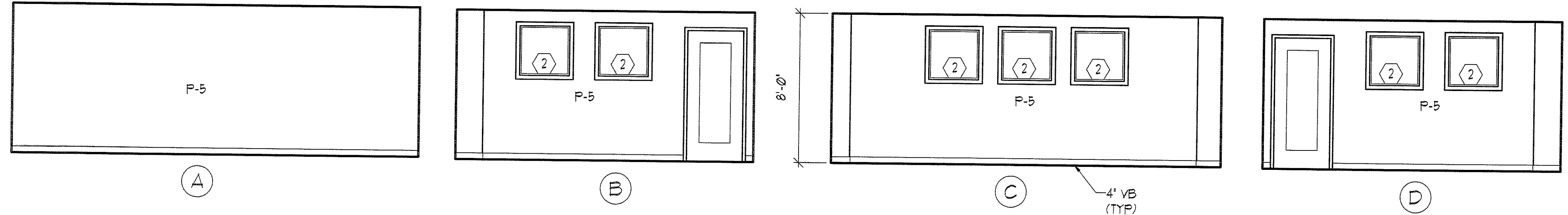
229 KITCHENETTE
SCALE: 1/4" = 1'-0"



CHAIR
SCALE: 1/4" = 1'-0"



216 WORK ROOM
SCALE: 1/4" = 1'-0"



217 CONFERENCE ROOM
SCALE: 1/4" = 1'-0"



BID SET - NOT FOR CONSTRUCTION

PORT CITY ARCHITECTURE
65 NEWBURY STREET
PORTLAND, ME 04101
207.761.9000
fax: 207.761.2010
lita@portcityarch.com

JACOBS CONSULTANCY
OPR Laboratory Planning Practice

VANZELM ENGINEERS
VANZELM BREYWOOD & SHADFORD, INC.

BECKER structural engineers, inc.

SYTDesign CONSULTANTS
CIVIL ENGINEERING & LANDSCAPE ARCHITECTURE

ALLIED/COOK CONSTRUCTION

Faireau ELECTRIC

Titan Mechanical
HVAC, Piping, Mechanical, Electrical

UNIVERSITY OF NEW ENGLAND COLLEGE OF PHARMACY
716 STEVENS AVENUE, PORTLAND, ME

#	DATE	DESCRIPTION
		BID SET
	02/08/08	Date Issued
	06506	Project Number
FREESTANDING SHEET NAME		
INTERIOR ELEVATIONS		
Drawn By	EC, AM, BK	
Checked By	LAS	
		A6.11

COPYRIGHT: Reuse or reproduction of the contents of this document is not permitted without written permission of PORT CITY ARCHITECTURE PA