

PORT CITY ARCHITECTURE

65 NEWBURY STREET  
PORTLAND, ME 04101  
207.761.9000  
fax: 207.761.2010  
lita@portcityarch.com

**JACOBS CONSULTANCY**  
OPR Laboratory Planning Practice

**VANZELM ENGINEERS**  
VANZELM BEYWOOD & SEAFORD, INC.

**BECKER**  
structural engineers, inc.

**SYTDDesign CONSULTANTS**  
CIVIL ENGINEERING & LANDSCAPE ARCHITECTURE

**ALLIED/COOK CONSTRUCTION**

**Favreau**  
electrical

**Titan Mechanical**  
Mechanical Engineering & Construction

UNIVERSITY OF NEW ENGLAND

COLLEGE OF PHARMACY

716 STEVENS AVENUE, PORTLAND, ME

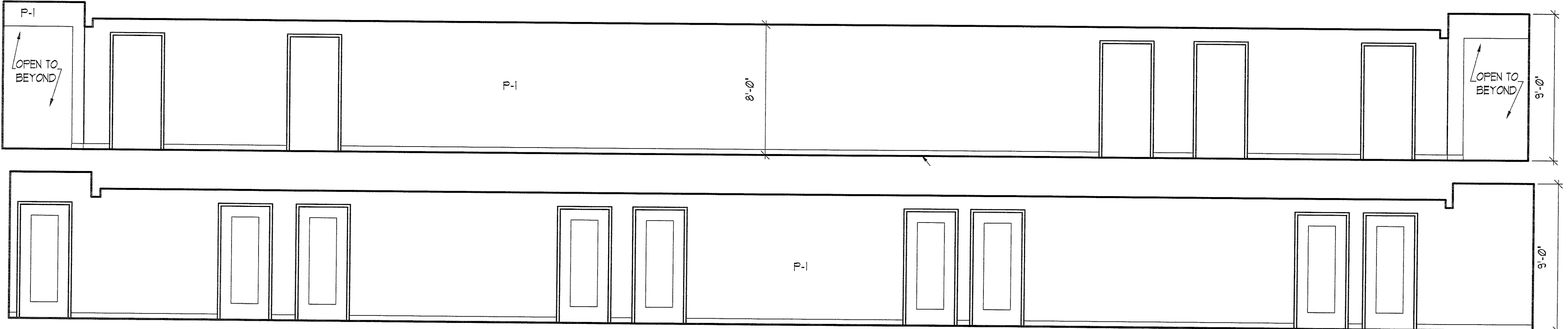
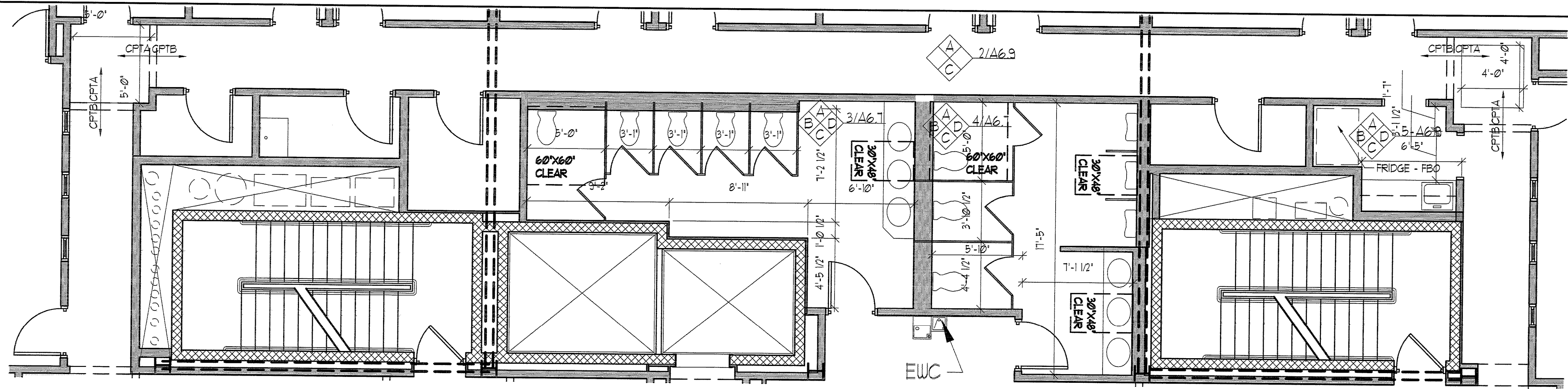
#	DATE	DESCRIPTION
		BID SET
	02/08/08	Date Issued
	06506	Project Number

SHEET NAME  
**INTERIOR ELEVATIONS**

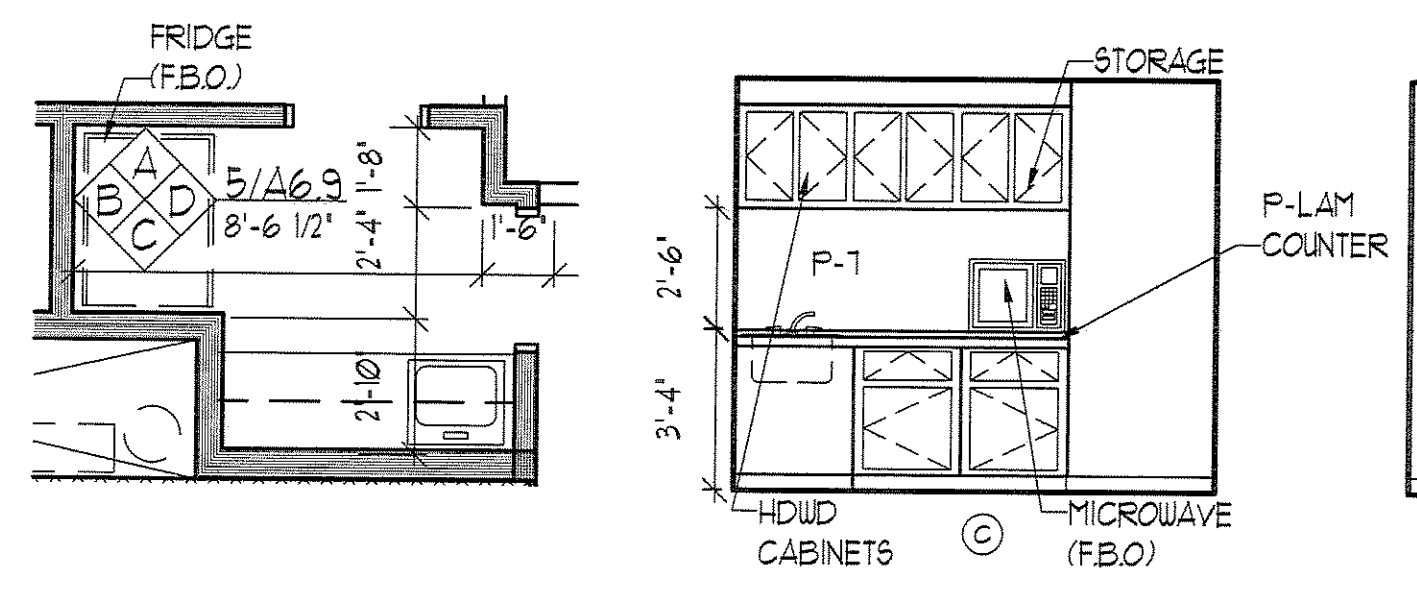
Drawn By  
EC, AM, EK

Checked By  
LAS

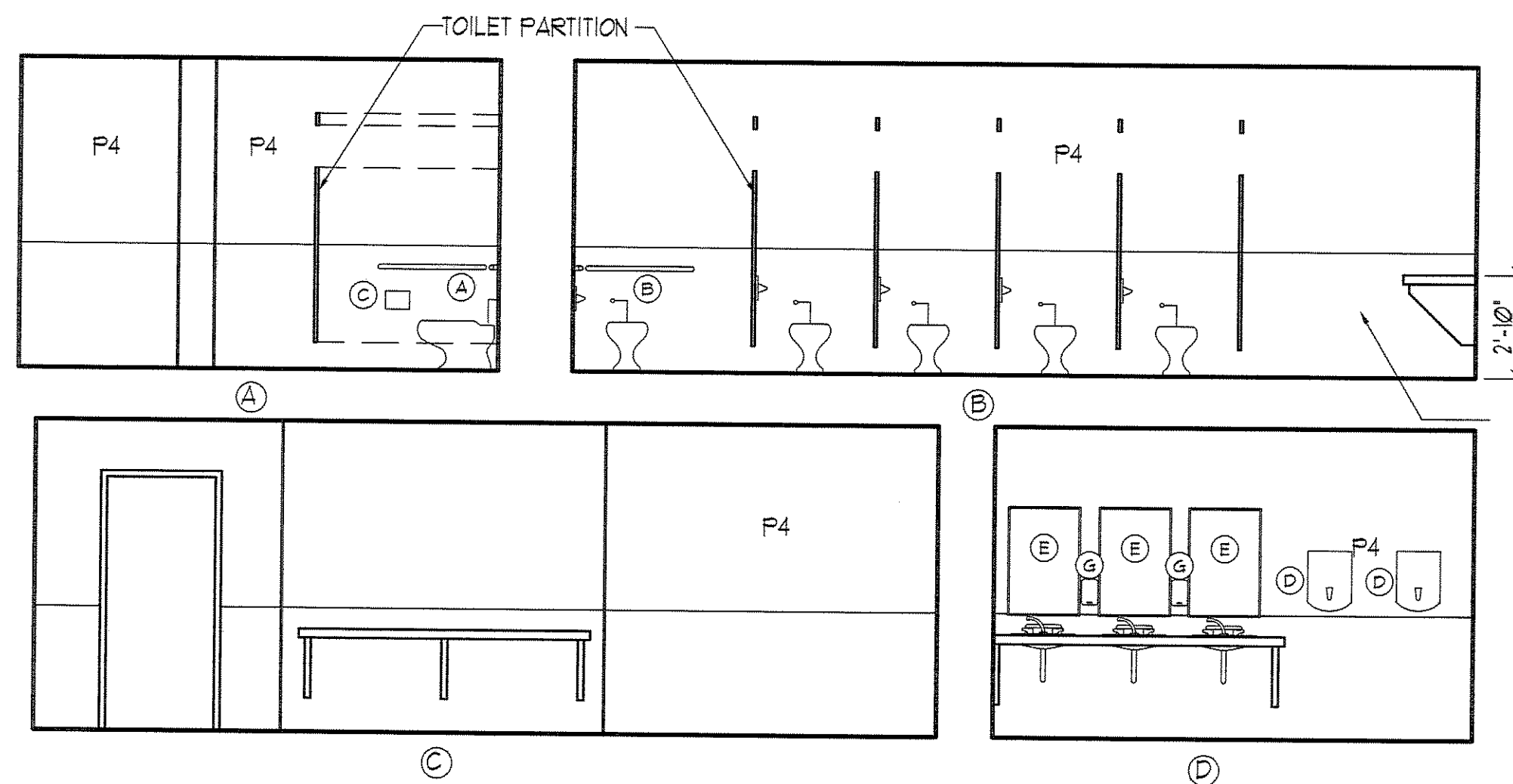
**A6.8**



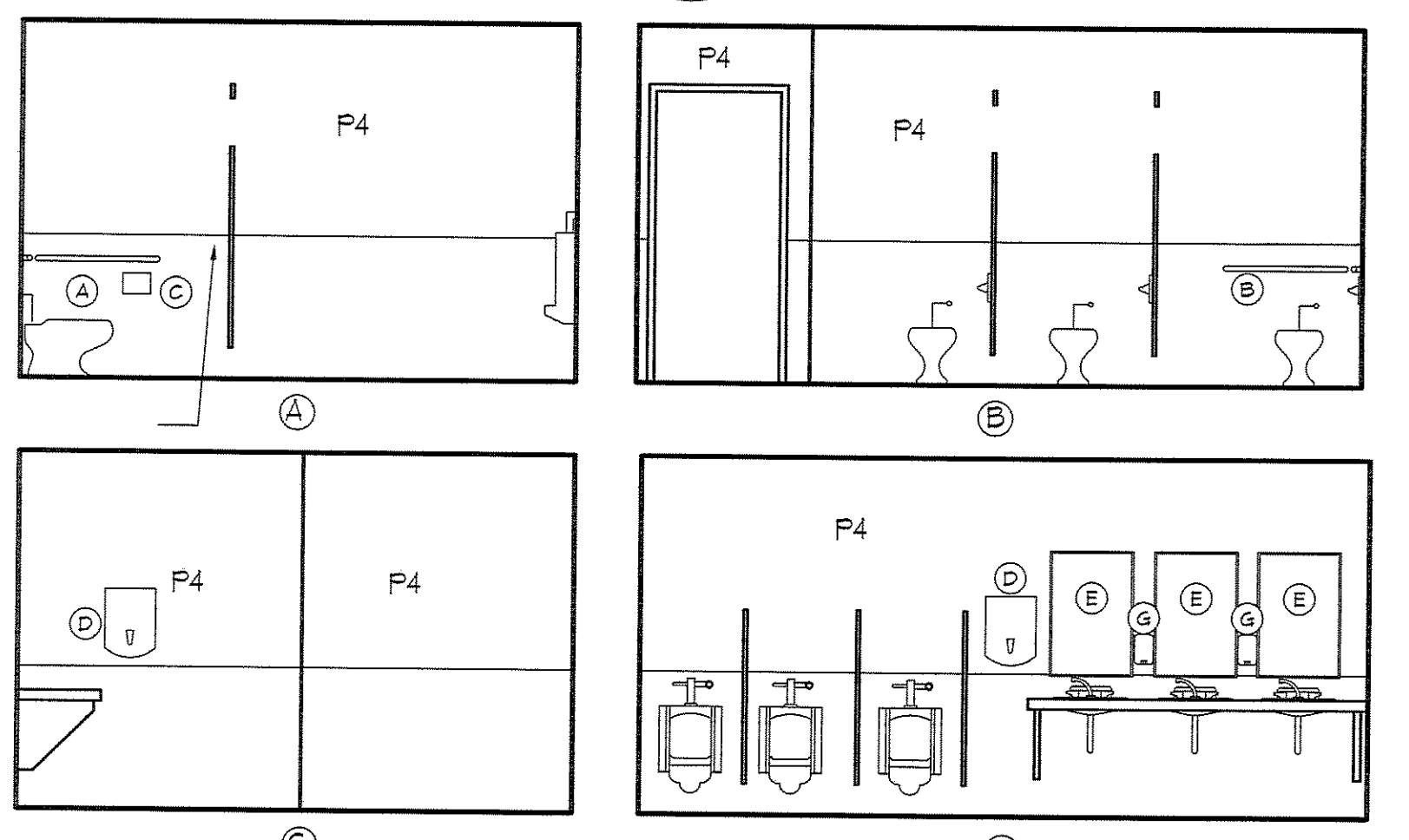
201 SECOND FLOOR HALL  
SCALE: 1/4" = 1'-0"



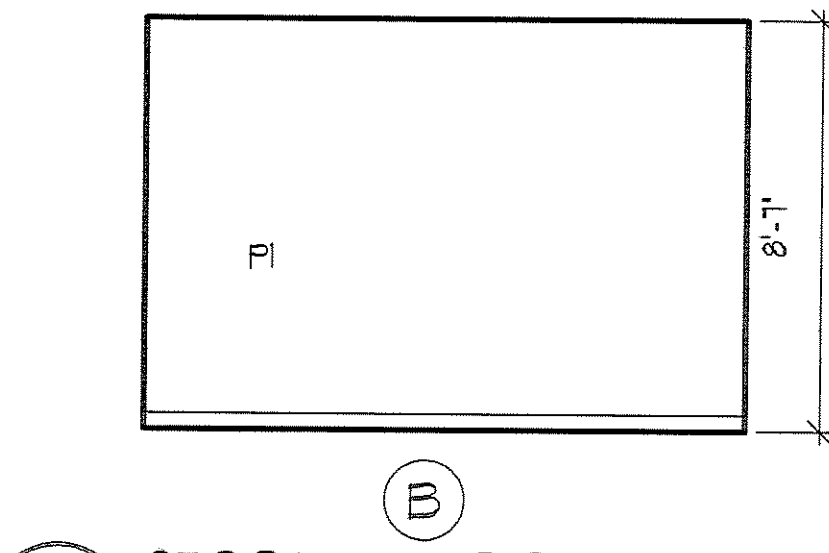
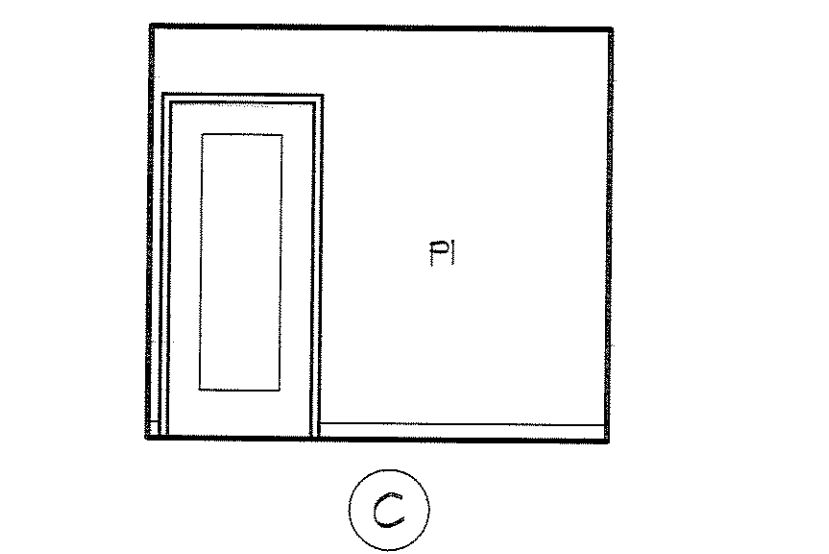
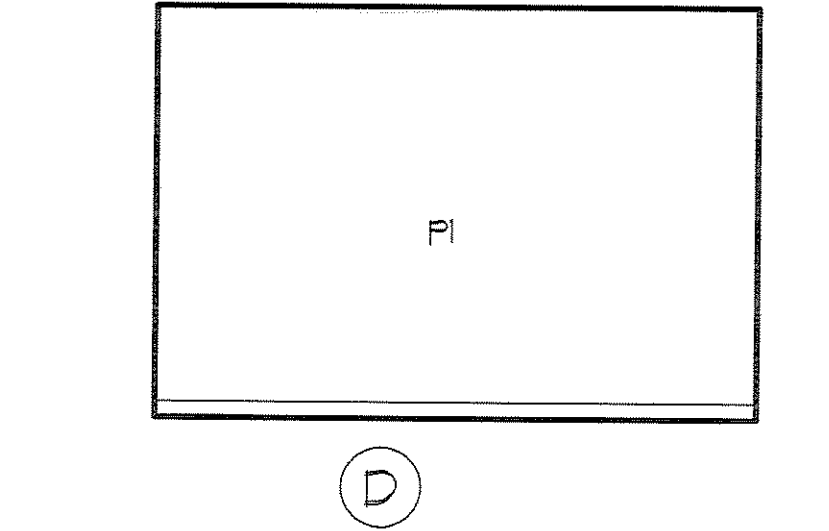
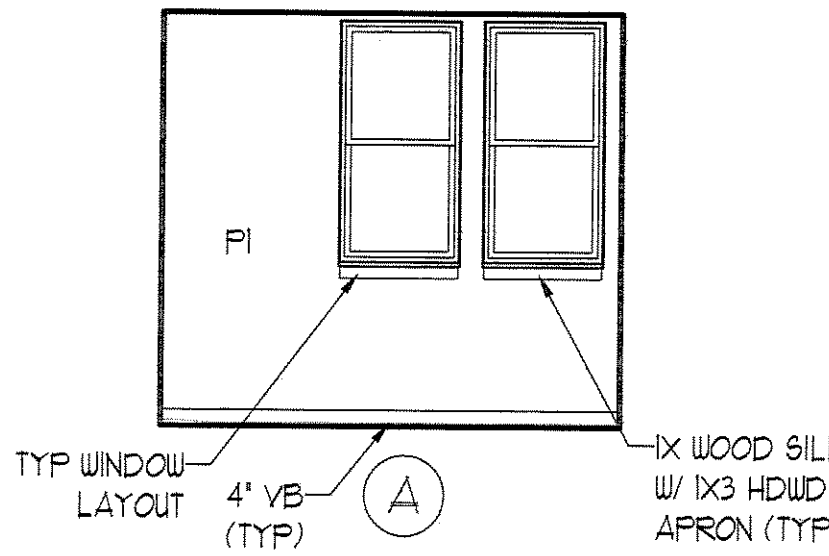
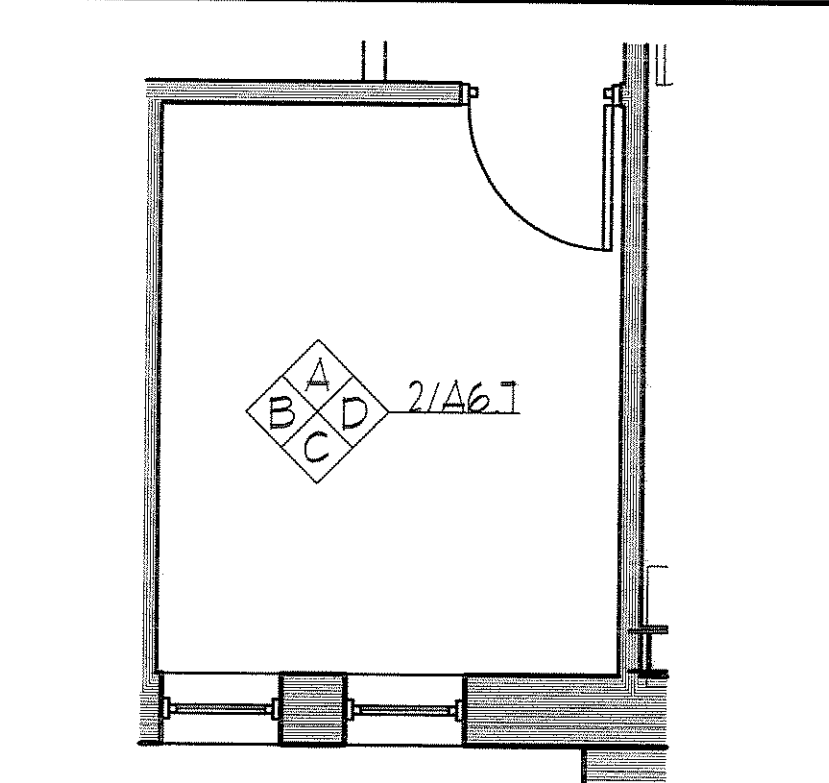
229 KITCHEN  
SCALE: 1/4" = 1'-0"



212 WOMEN'S BATHROOM  
SCALE: 1/4" = 1'-0"



211 MEN'S BATHROOM  
SCALE: 1/4" = 1'-0"



SECOND FLOOR OFFICE (TYP)  
SCALE: 1/4" = 1'-0"

IF THIS SHEET IS NOT 24 X 36 IT IS A REDUCED SCALE PRINT - SCALE ACCORDINGLY