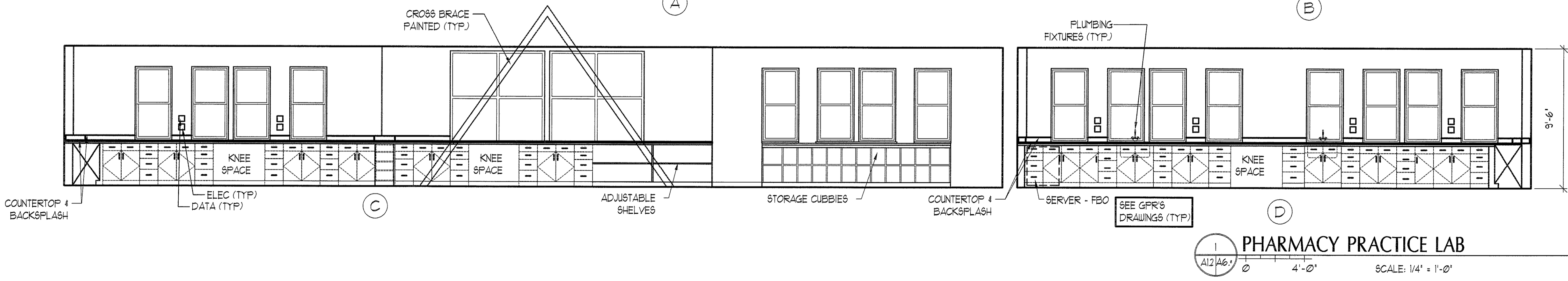
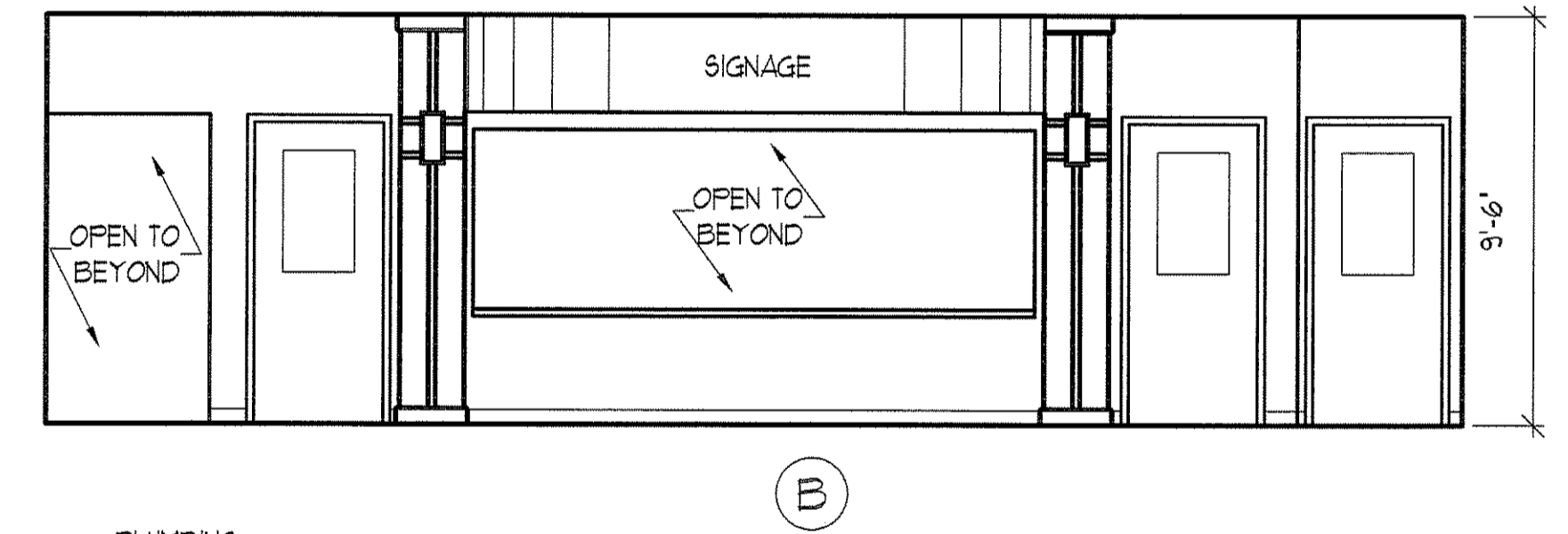
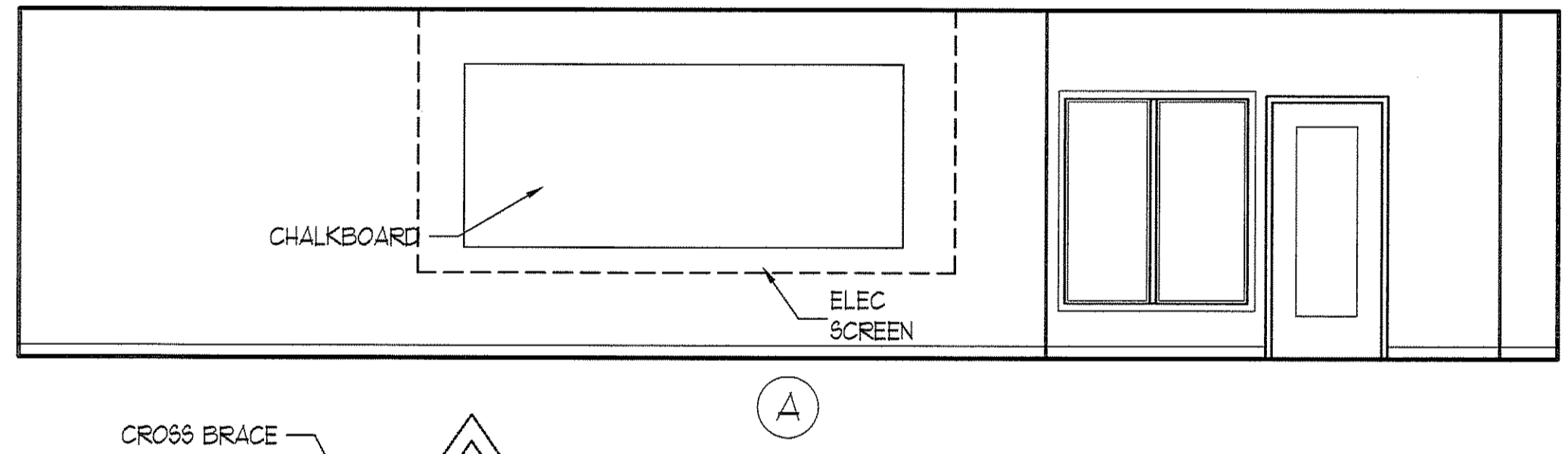
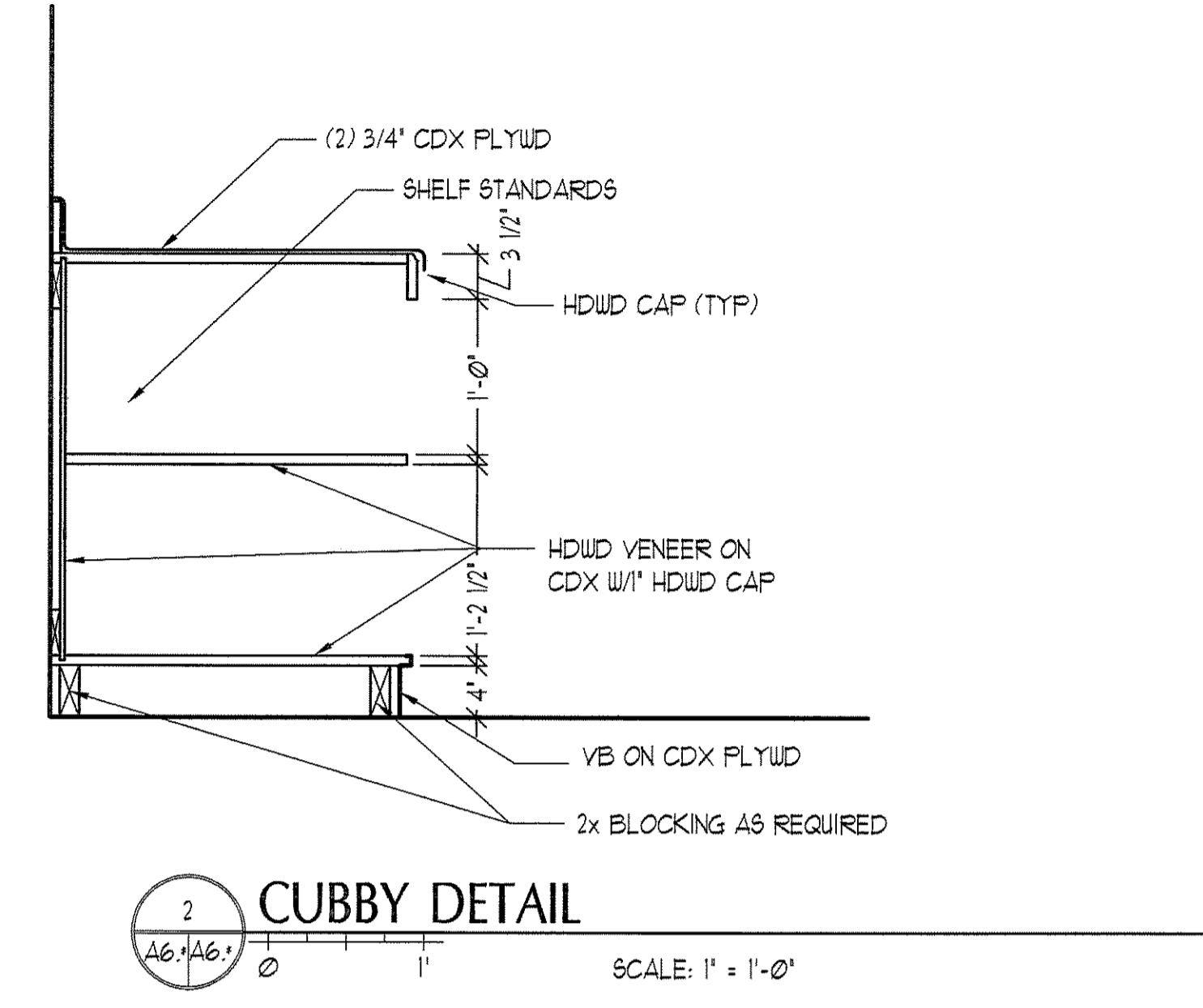
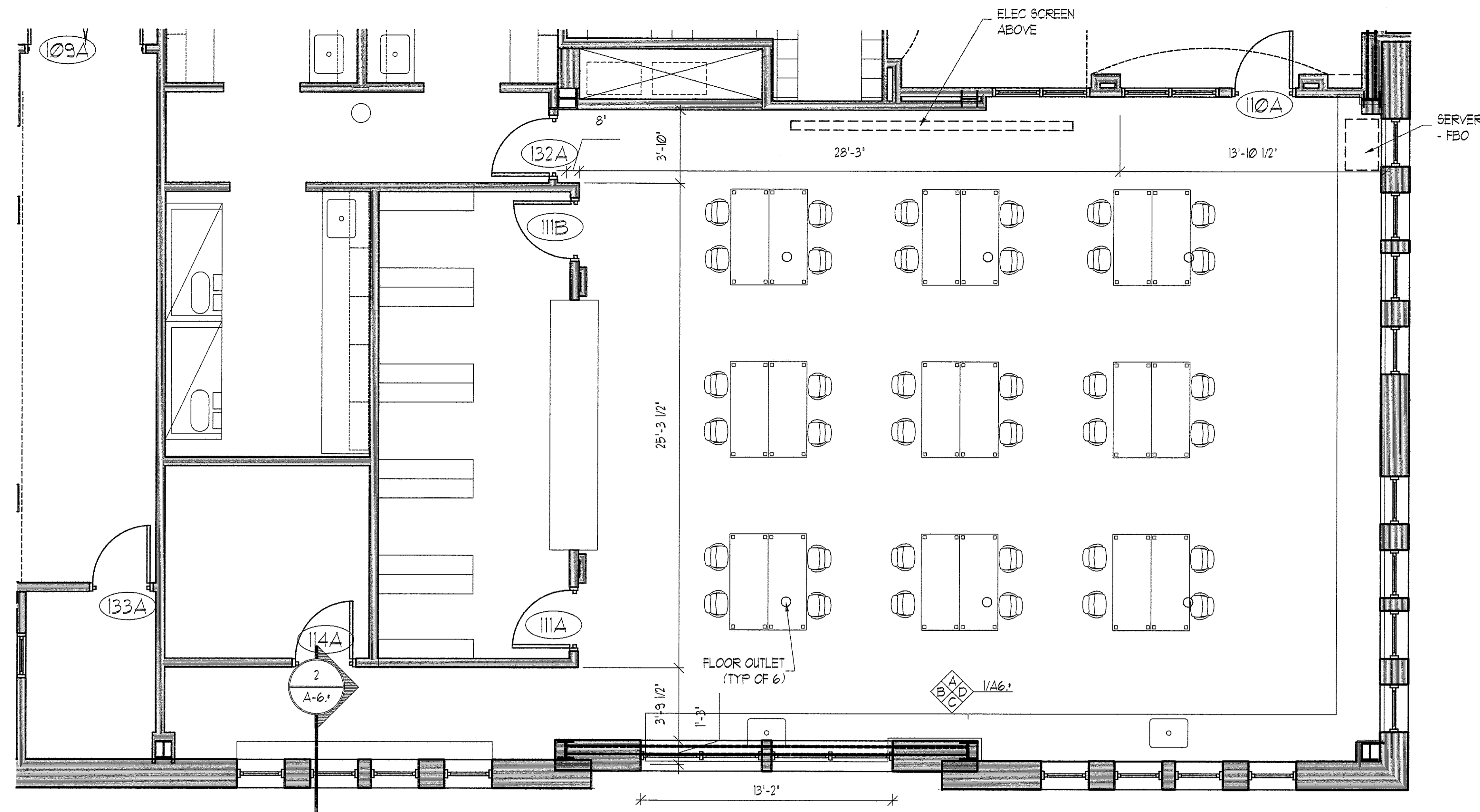
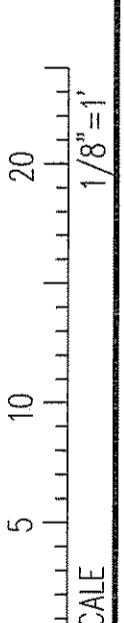
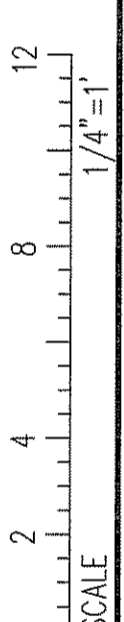
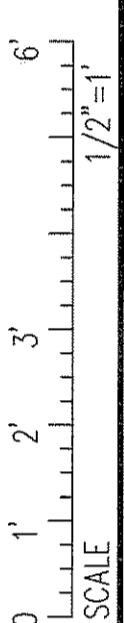
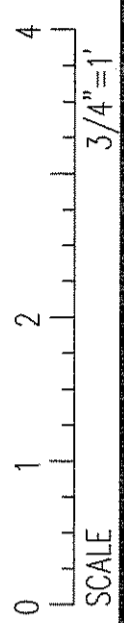
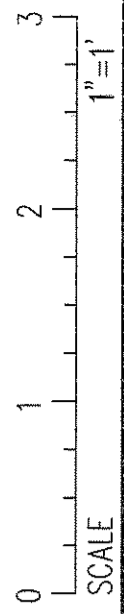
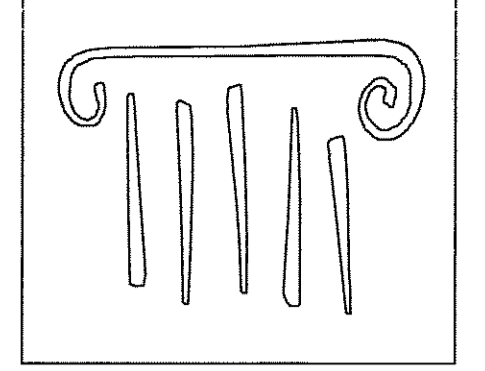


IF THIS SHEET IS NOT 24 X 36 IT IS A REDUCED SCALE PRINT - SCALE ACCORDINGLY



1 PHARMACY PRACTICE LAB SCALE: 1/4" = 1'-0"



PORT CITY ARCHITECTURE

65 NEWBURY STREET  
PORTLAND, ME 04101  
207.761.9000  
fax: 207.761.2010  
lita@portcityarch.com

JACOBS CONSULTANCY  
GPR Laboratory Planning Practice

VANZELM ENGINEERS  
VANZELM HEYWOOD & BRADFORD, INC.

BECKER structural engineers, inc.

SYTDesign CONSULTANTS  
CIVIL ENGINEERING & LANDSCAPE ARCHITECTURE

ALLIED/COOK CONSTRUCTION

Favreau electric

Titan Mechanical

UNIVERSITY OF NEW ENGLAND

COLLEGE OF PHARMACY

716 STEVENS AVENUE, PORTLAND, ME

Table with 2 columns: DATE, DESCRIPTION

BID SET

Date Issued 02/08/08

Project Number 06506

SHEET NAME

INTERIOR ELEV.

Drawn By EC, AM, EK

Checked By LAs

A6.4

BID SET - NOT FOR CONSTRUCTION