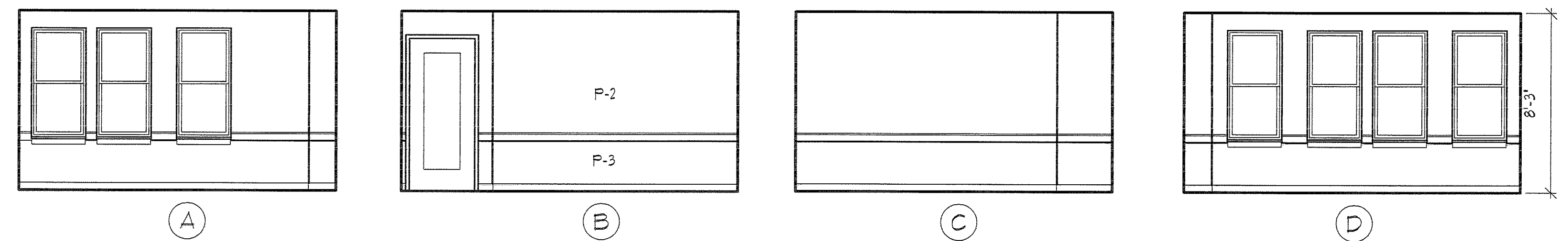
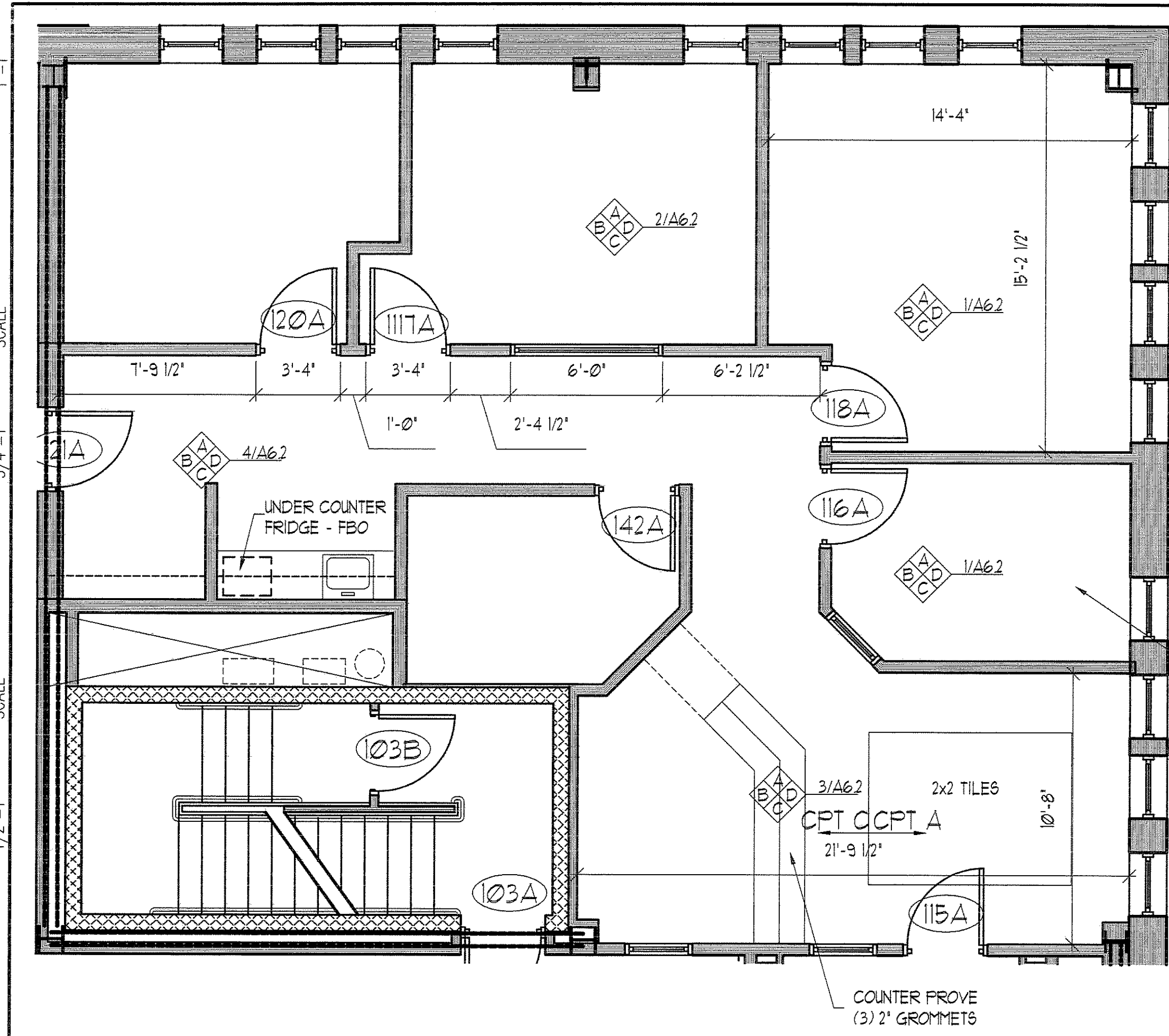
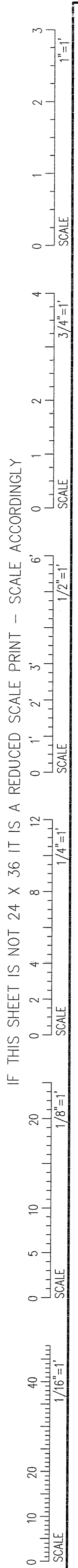
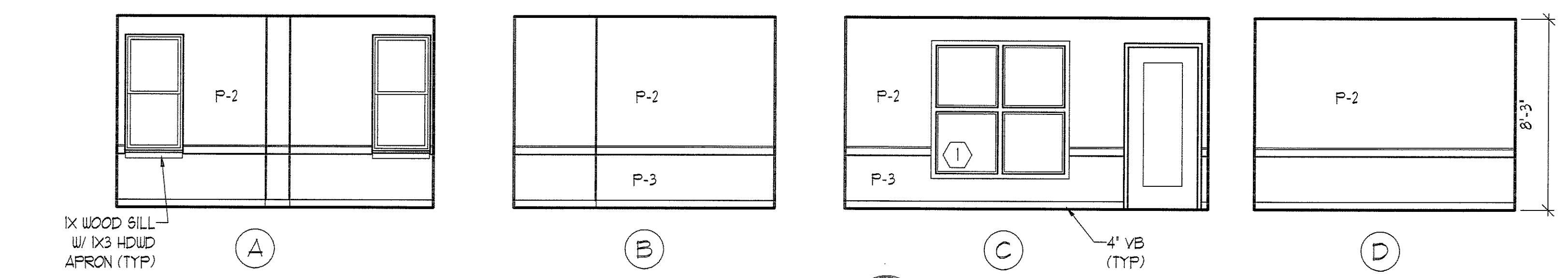


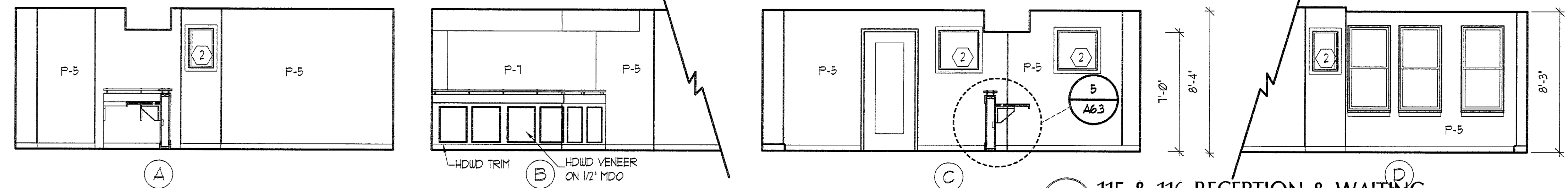
IF THIS SHEET IS NOT 24 X 36 IT IS A REDUCED SCALE PRINT - SCALE ACCORDINGLY



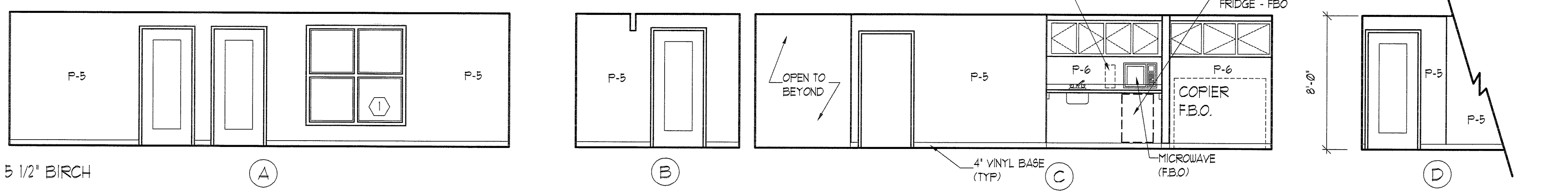
118 DEAN'S OFFICE
SCALE: 1/4" = 1'-0"



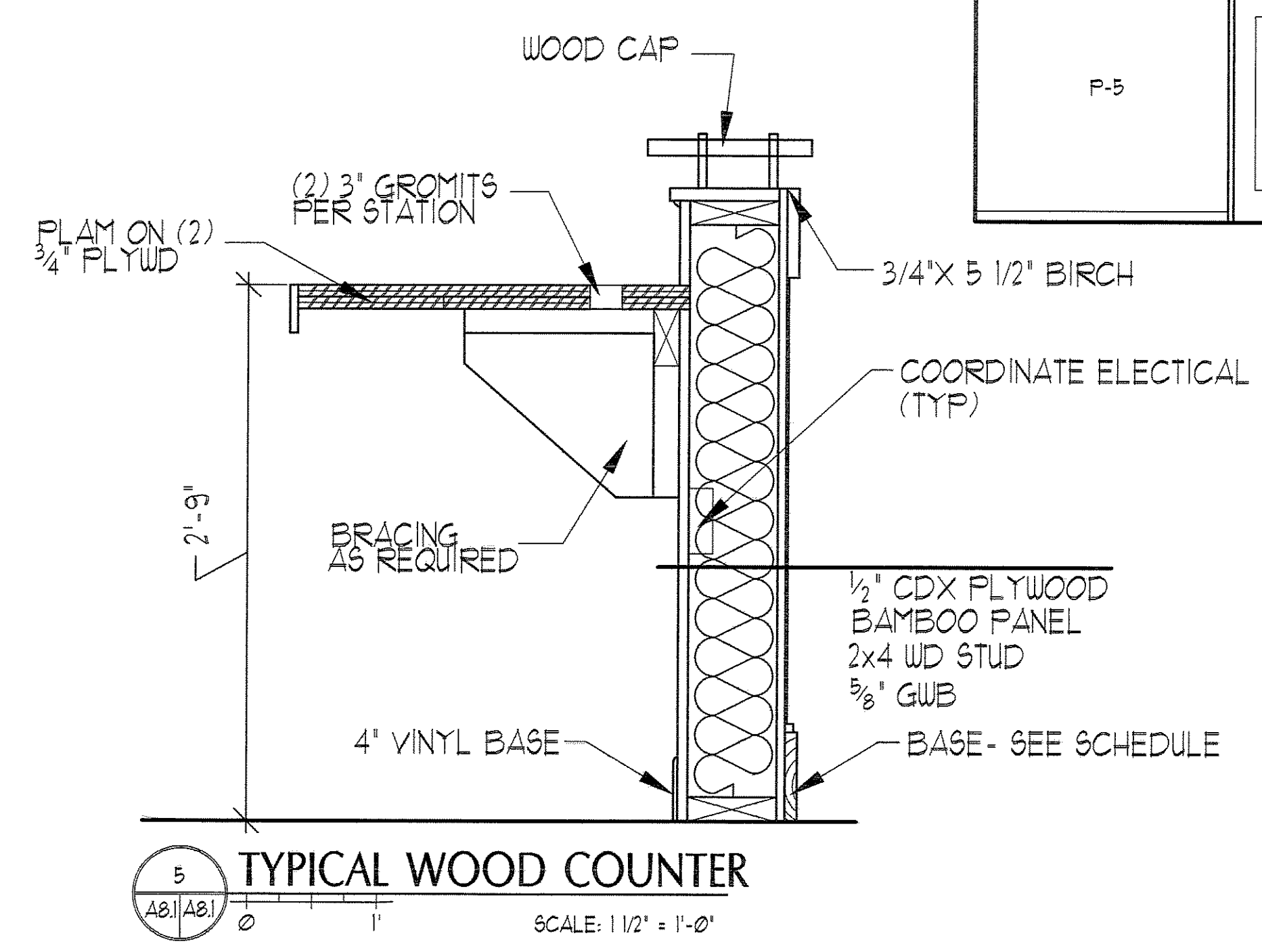
117 DEAN'S CONFERENCE
SCALE: 1/4" = 1'-0"



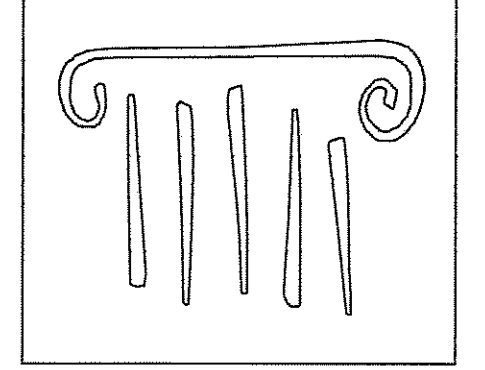
115 & 116 RECEPTION & WAITING
SCALE: 1/4" = 1'-0"



121 OFFICE HALLWAY
SCALE: 1/4" = 1'-0"



5 TYPICAL WOOD COUNTER
SCALE: 1 1/2" = 1'-0"



PORT CITY ARCHITECTURE

65 NEWBURY STREET
PORTLAND, ME 04101
207.761.9000
fax: 207.761.2010
lita@portcityarch.com

JACOBS CONSULTANCY
OP&P Laboratory Planning Practice

VANZELM ENGINEERS
VANZELM KEYWOOD & SHAFORD, INC.

BECKER structural engineers, inc.

SYTDesign CONSULTANTS
CIVIL ENGINEERING & LANDSCAPE ARCHITECTURE

ALLIED/COOK CONSTRUCTION

Favreau ELECTRIC

Titan Mechanical

UNIVERSITY OF NEW ENGLAND

COLLEGE OF PHARMACY

76 STEVENS AVENUE, PORTLAND, ME

#	DATE	DESCRIPTION
		BID SET
	01/08/08	Date Issued
	06506	Project Number
SHEET NAME		

INTERIOR ELEV.

Drawn By
EC, AM, EK

Checked By
LAS

A6.3

BID SET - NOT FOR CONSTRUCTION