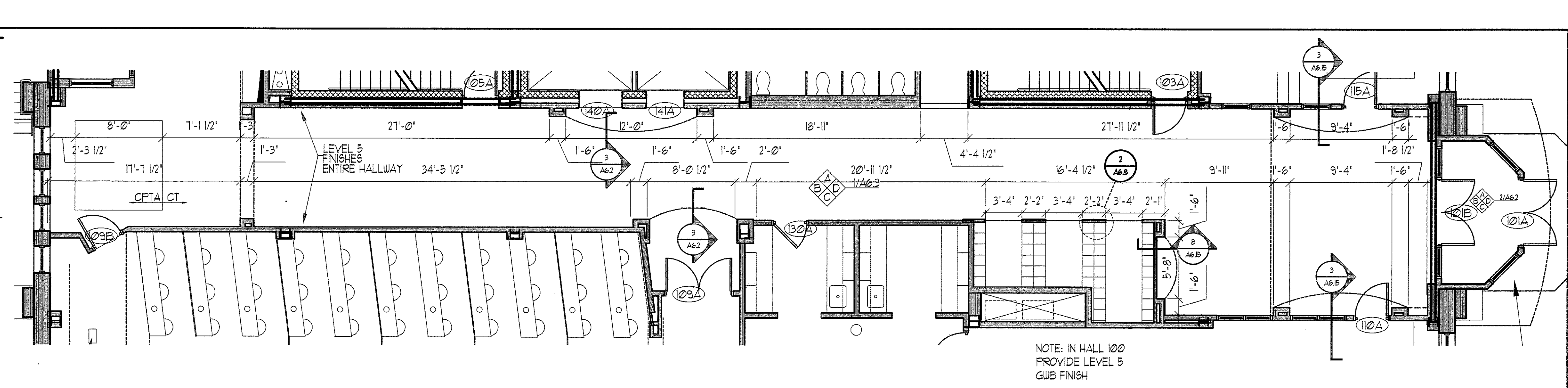
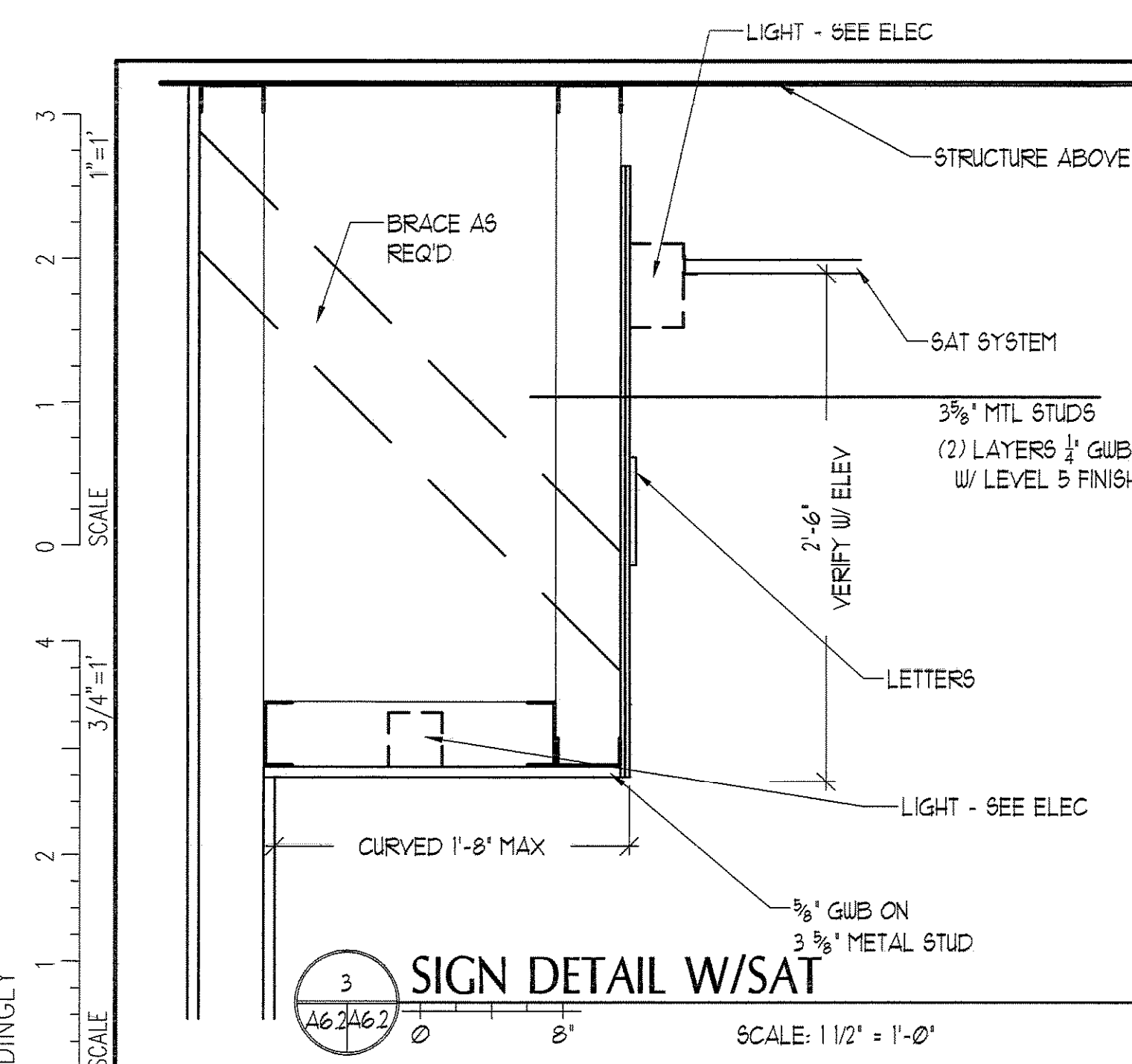
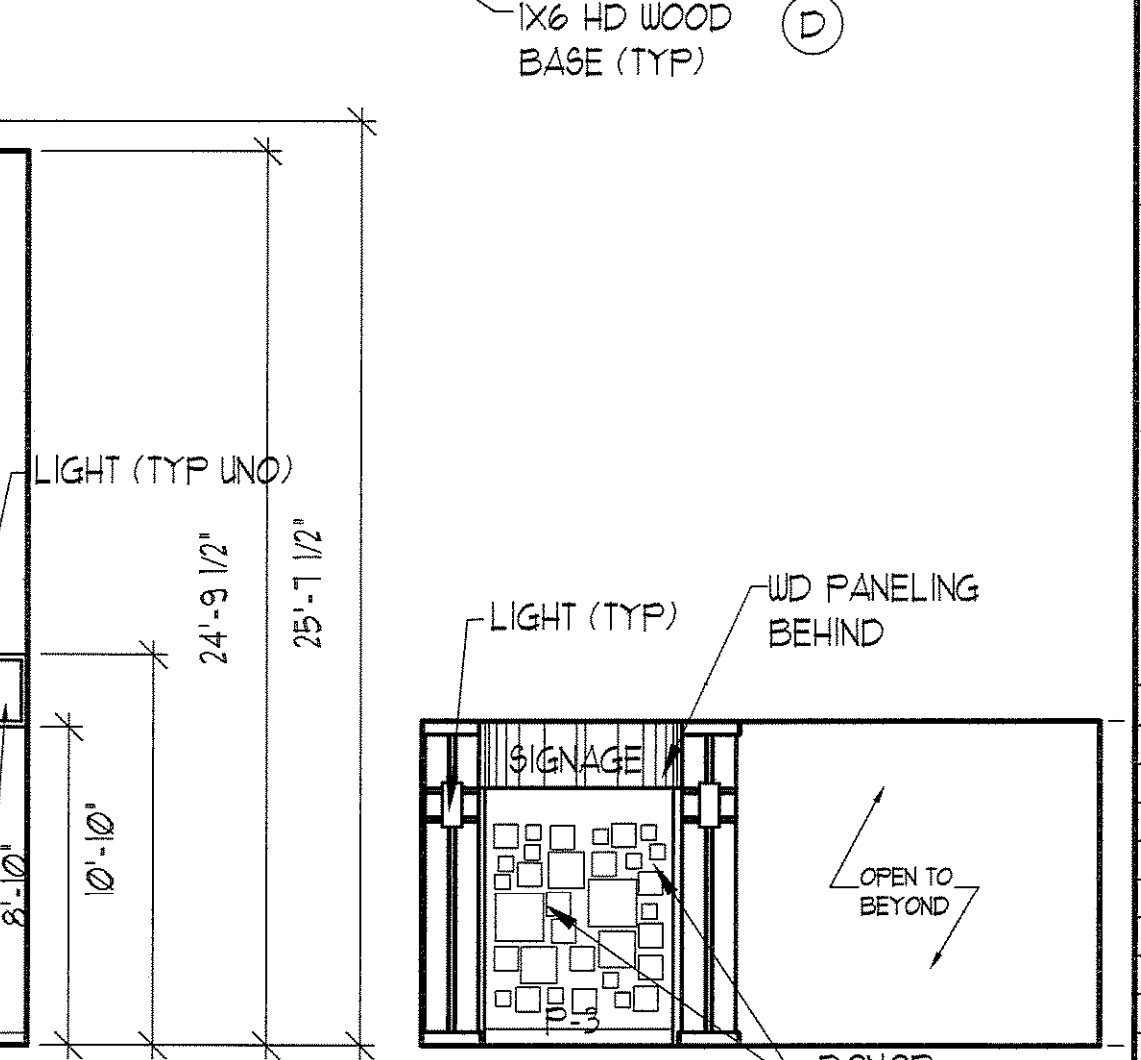
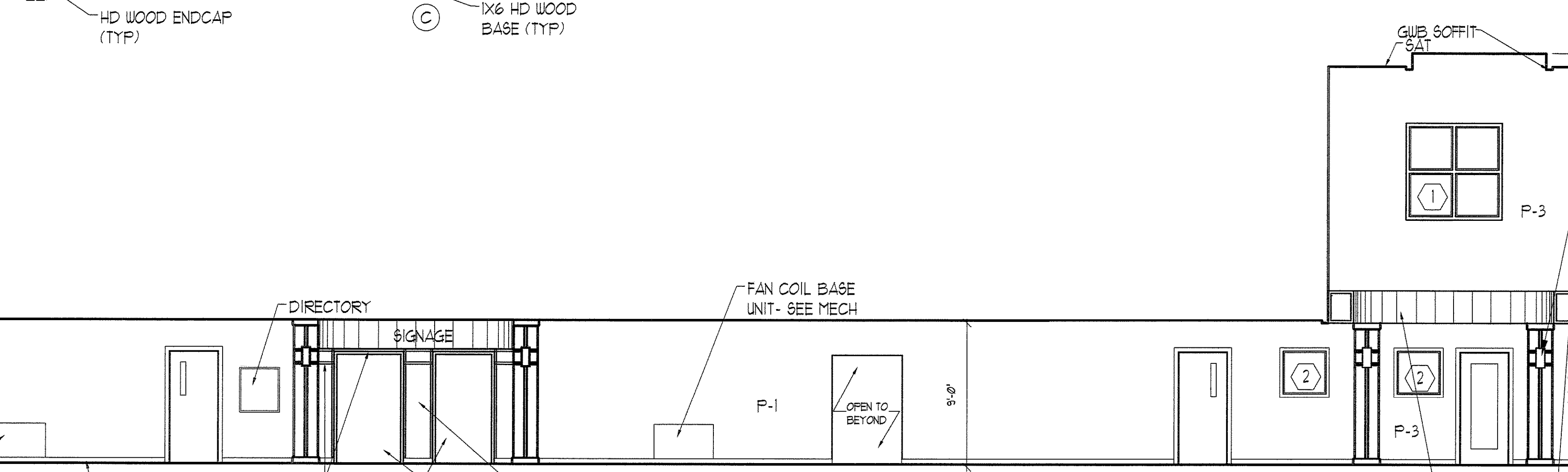
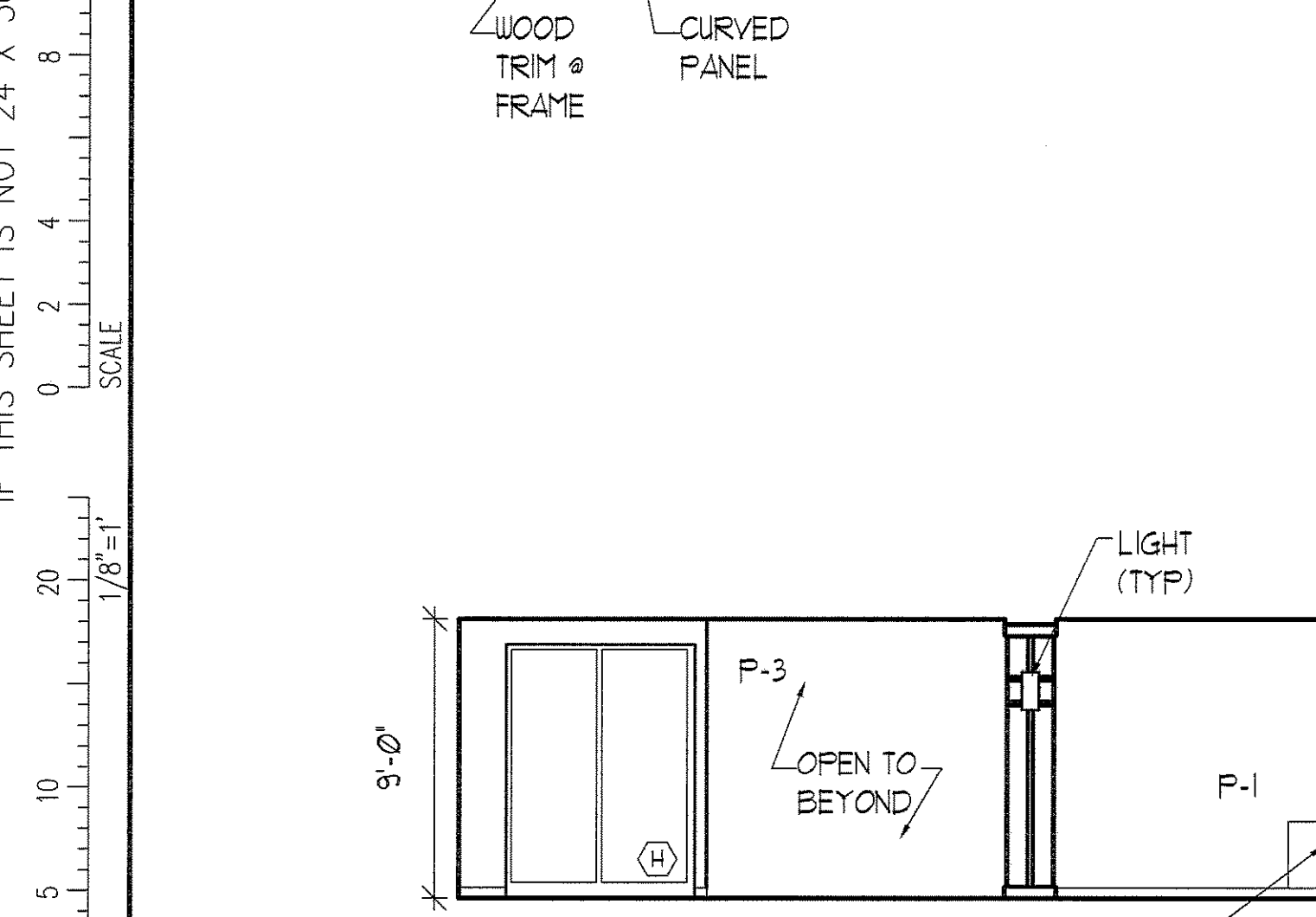
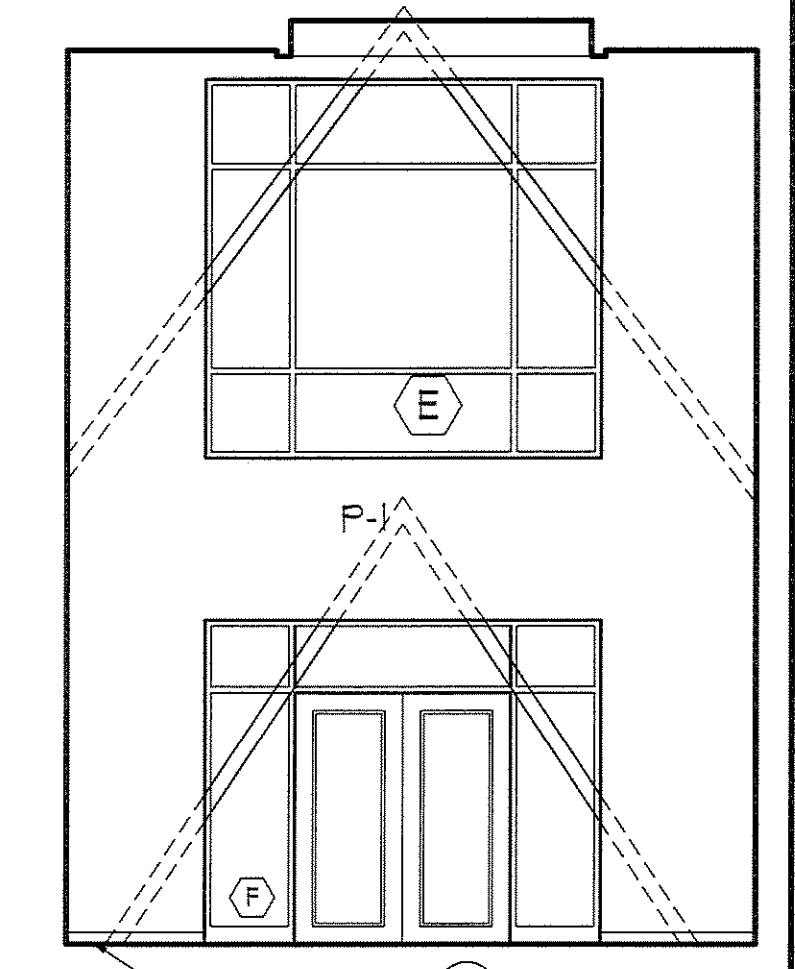
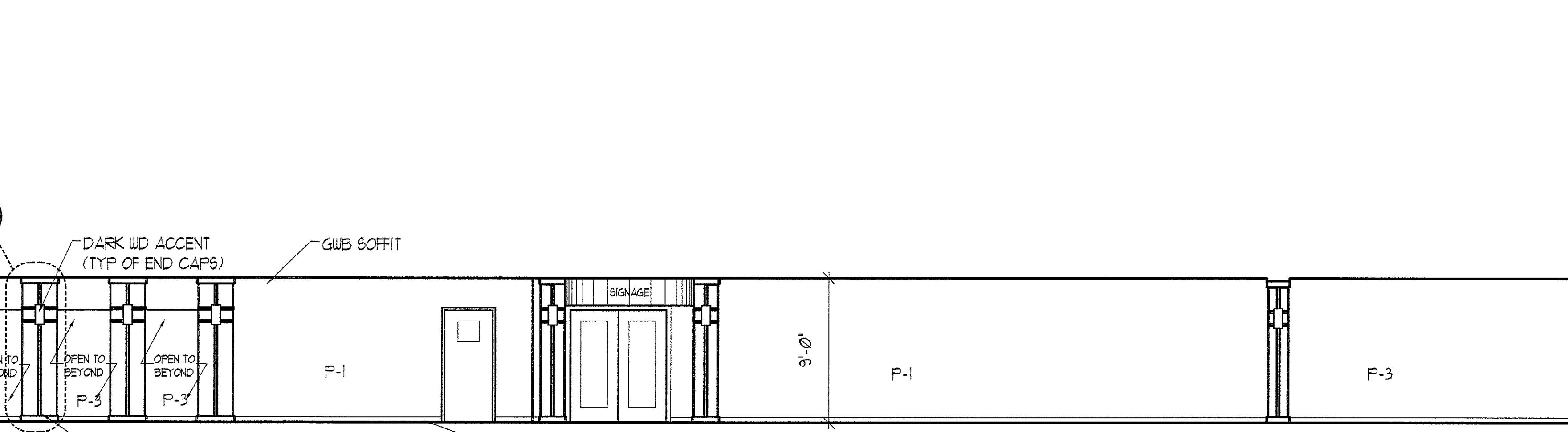
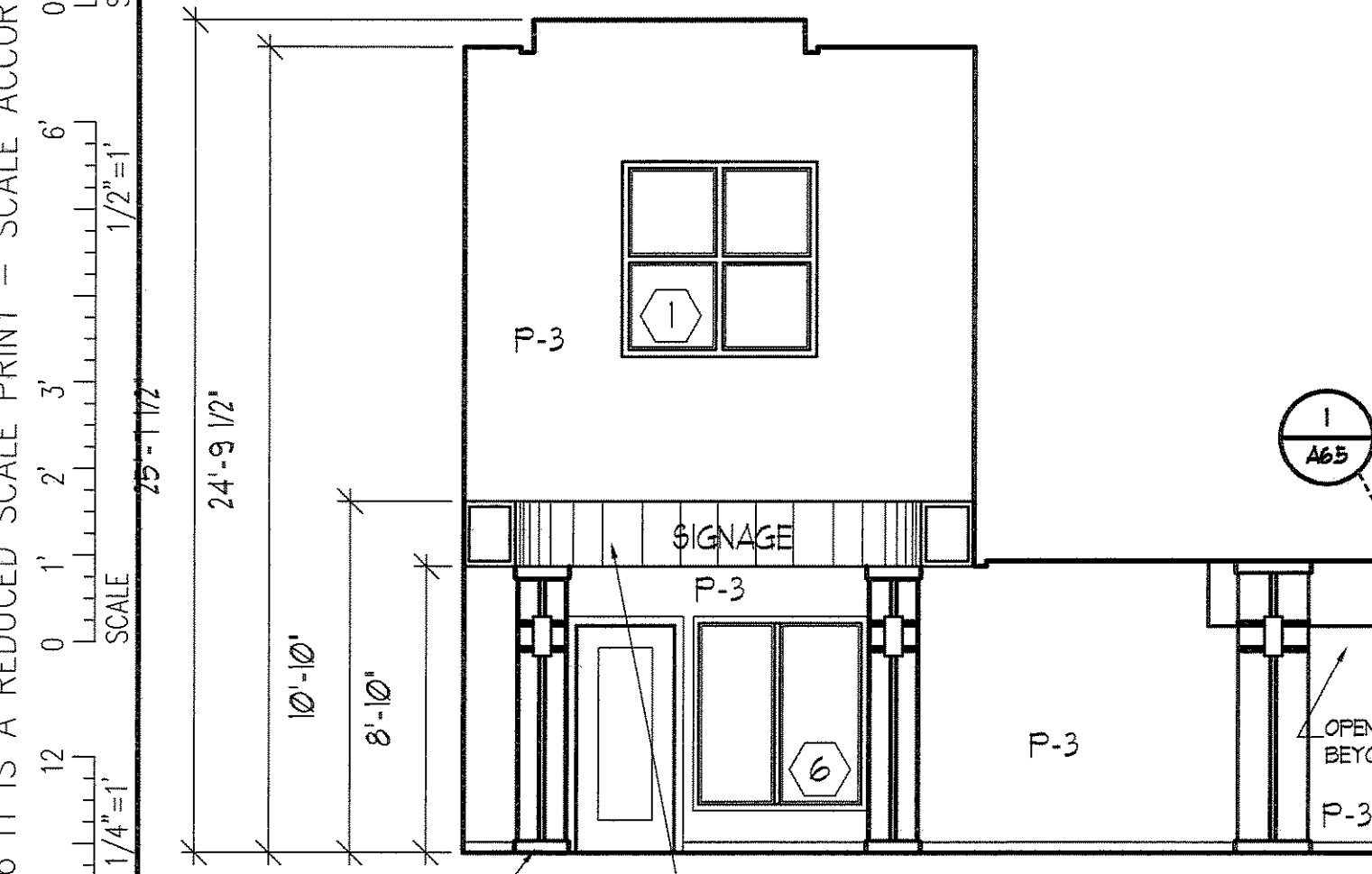


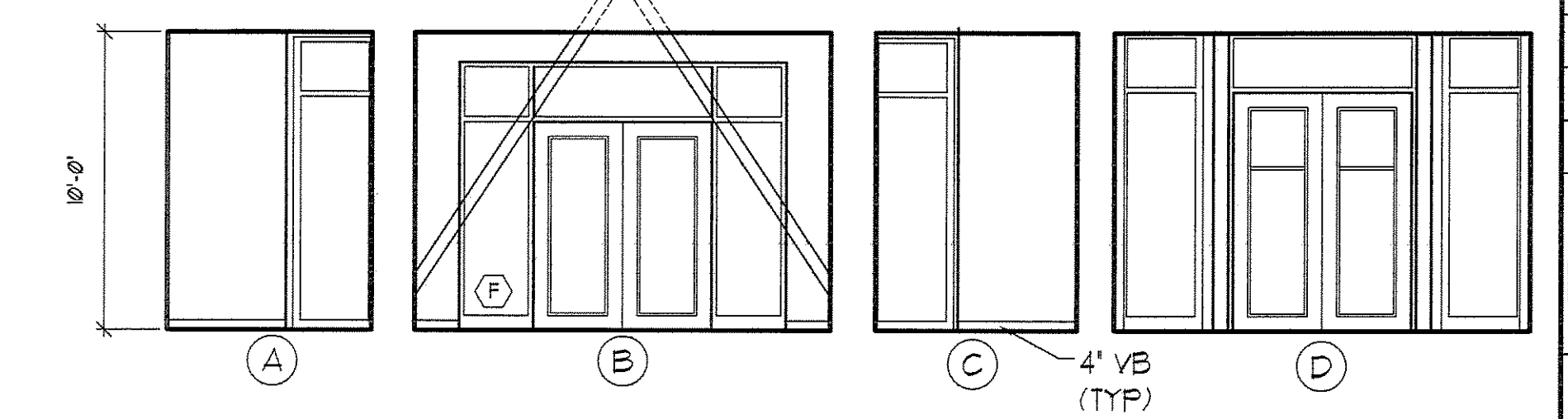
IF THIS SHEET IS NOT 24 X 36 IT IS A REDUCED SCALE PRINT - SCALE ACCORDINGLY



NOTE: IN HALL 100 PROVIDE LEVEL 5 GWB FINISH

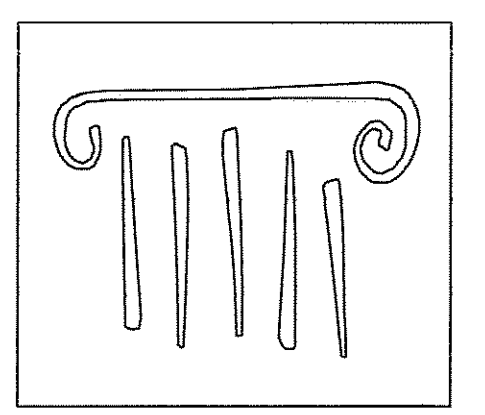


100 MAIN HALLWAY
SCALE: 3/16" = 1'-0"



101 FRONT VESTIBULE
SCALE: 3/16" = 1'-0"

BID SET - NOT FOR CONSTRUCTION



PORT CITY ARCHITECTURE

65 NEWBURY STREET
PORTLAND, ME 04101
207.761.9000
fax: 207.761.2010
lita@portcityarch.com

JACOBS CONSULTANCY
Civil, Laboratory Planning Practice

VANZELM ENGINEERS
VANZELM HEYWOOD & SHAFORD, INC.

BECKER
Structural Engineers, Inc.

SYTDesign CONSULTANTS
Civil Engineering & Landscape Architecture

ALLIED/COOK CONSTRUCTION

Faireau
ELECTRIC

Titan Mechanical
Mechanical Engineering - Mechanical Contractors

UNIVERSITY OF NEW ENGLAND

COLLEGE OF PHARMACY

76 STEVENS AVENUE, PORTLAND, ME

#	DATE	DESCRIPTION
		BID SET
	02/08/08	Date Issued
	06506	Project Number
		SHEET NAME

INTERIOR ELEV.

Drawn By
EC, AM, EK

Checked By
LAS

A6.2