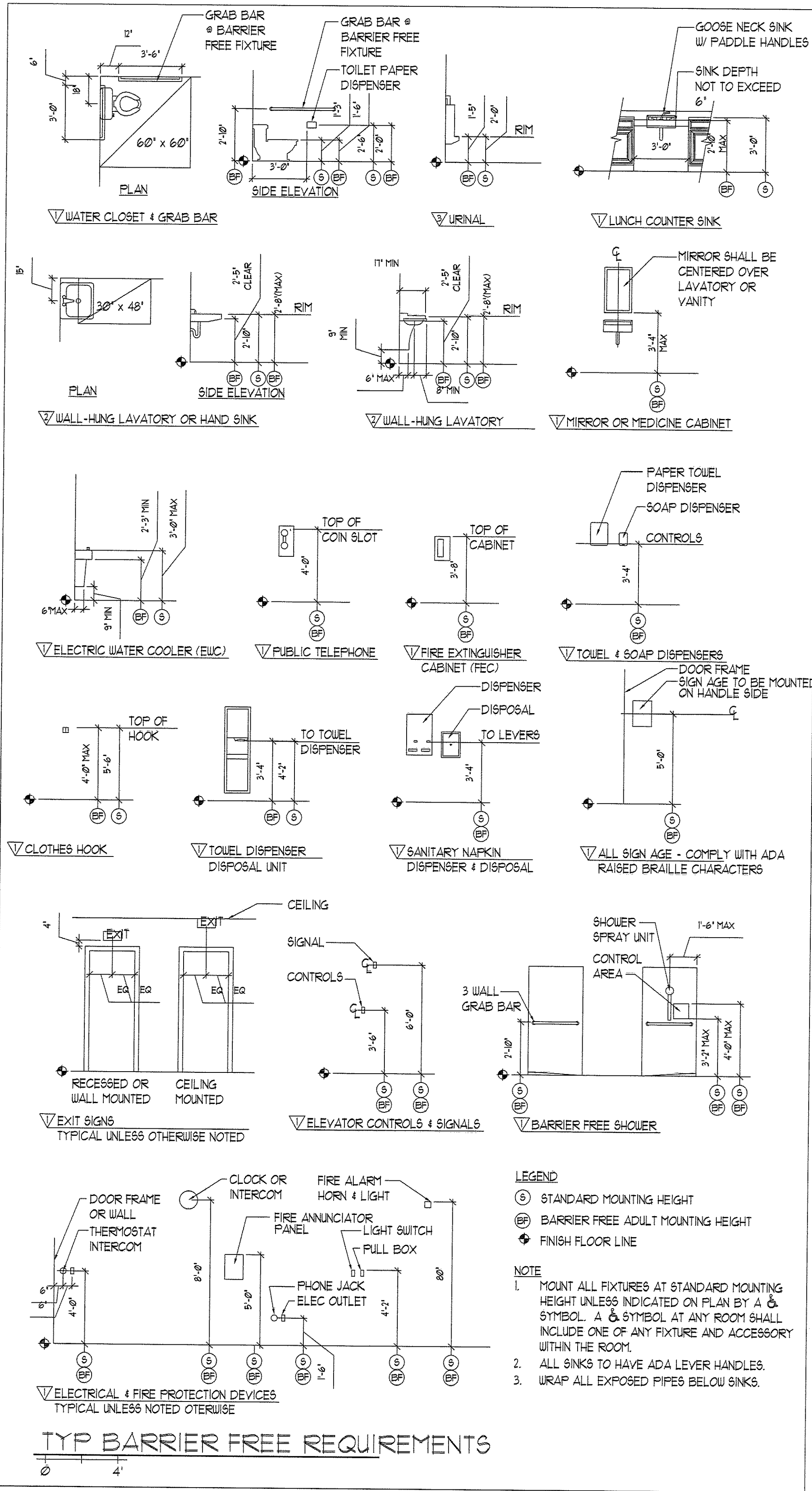
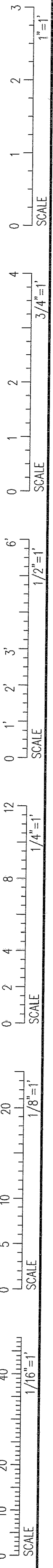
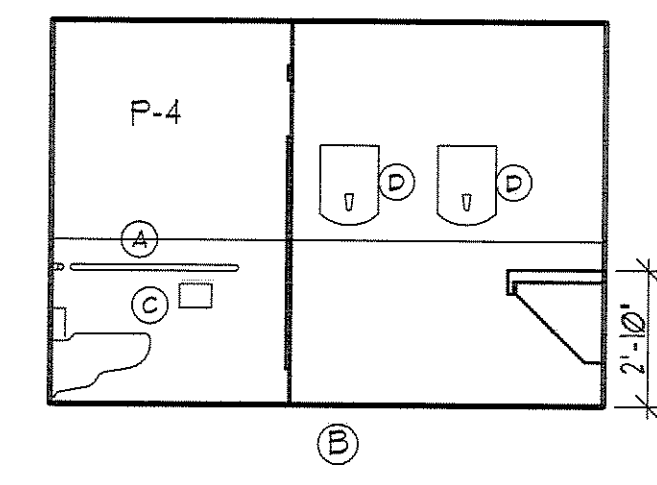
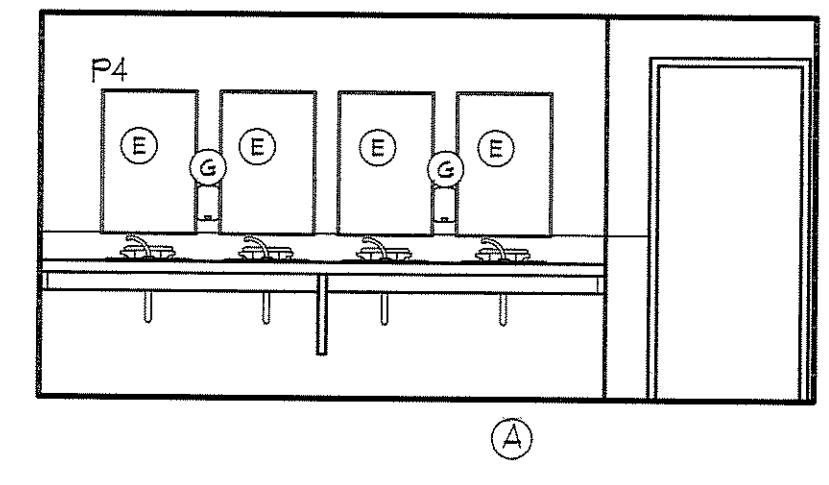
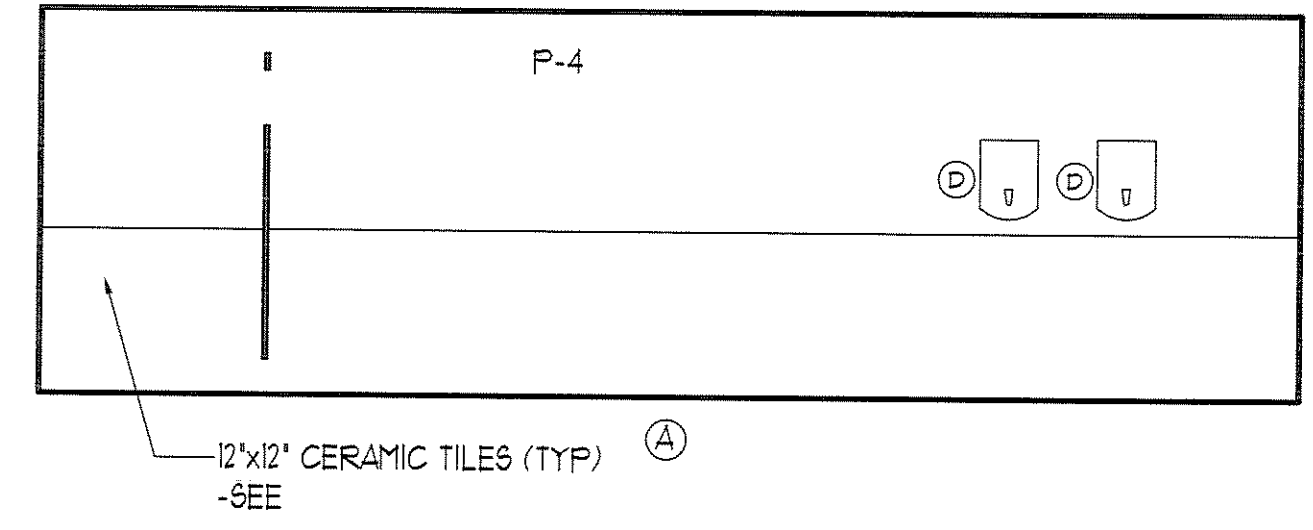
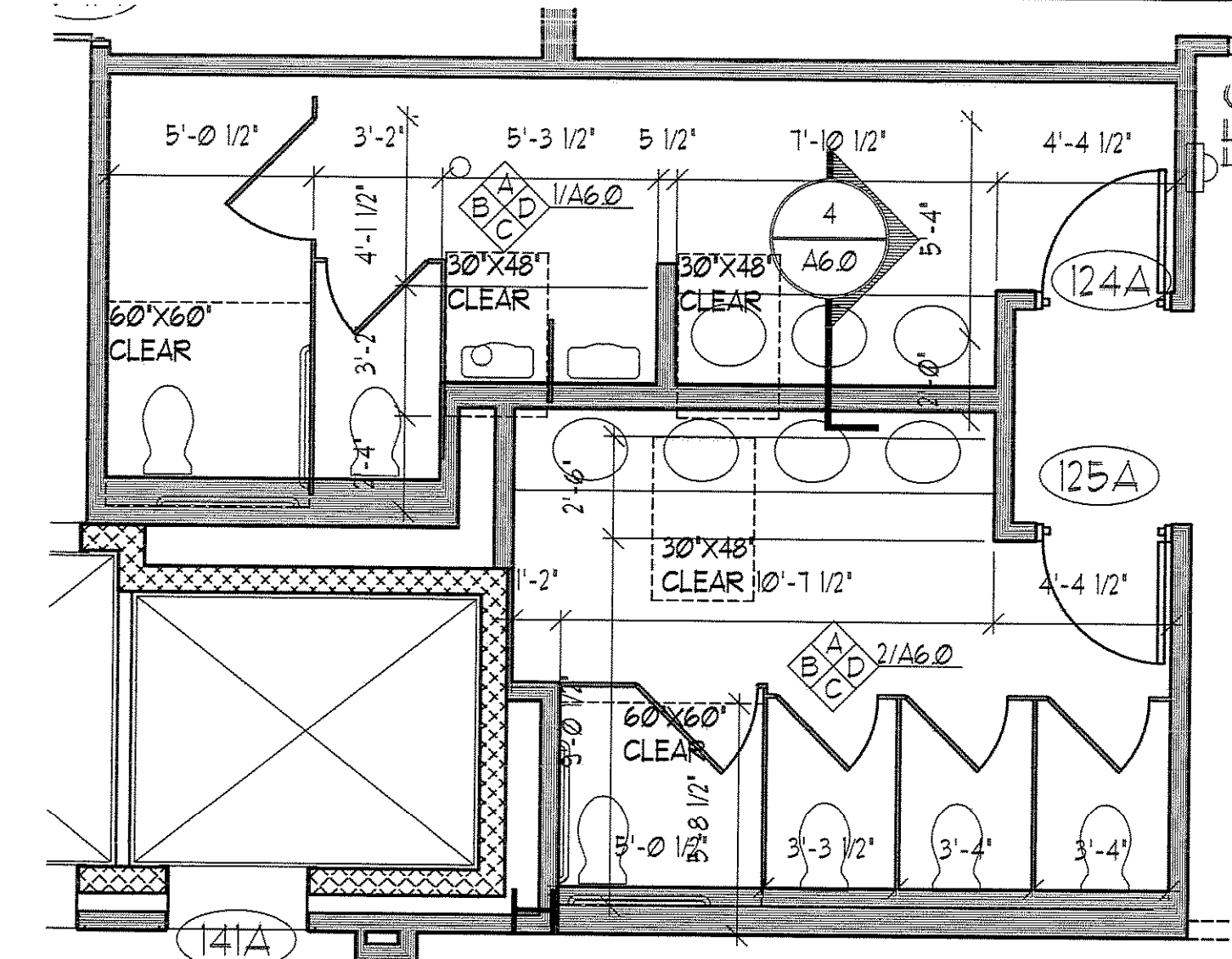


IF THIS SHEET IS NOT 24 X 36 IT IS A REDUCED SCALE PRINT - SCALE ACCORDINGLY

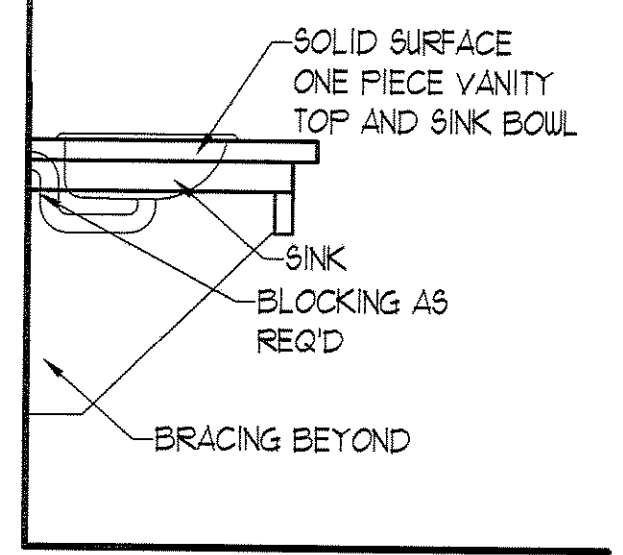
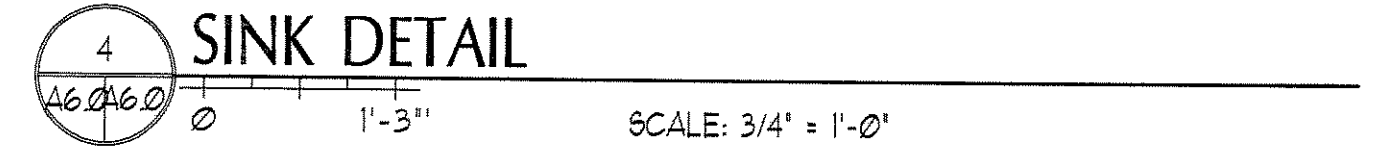
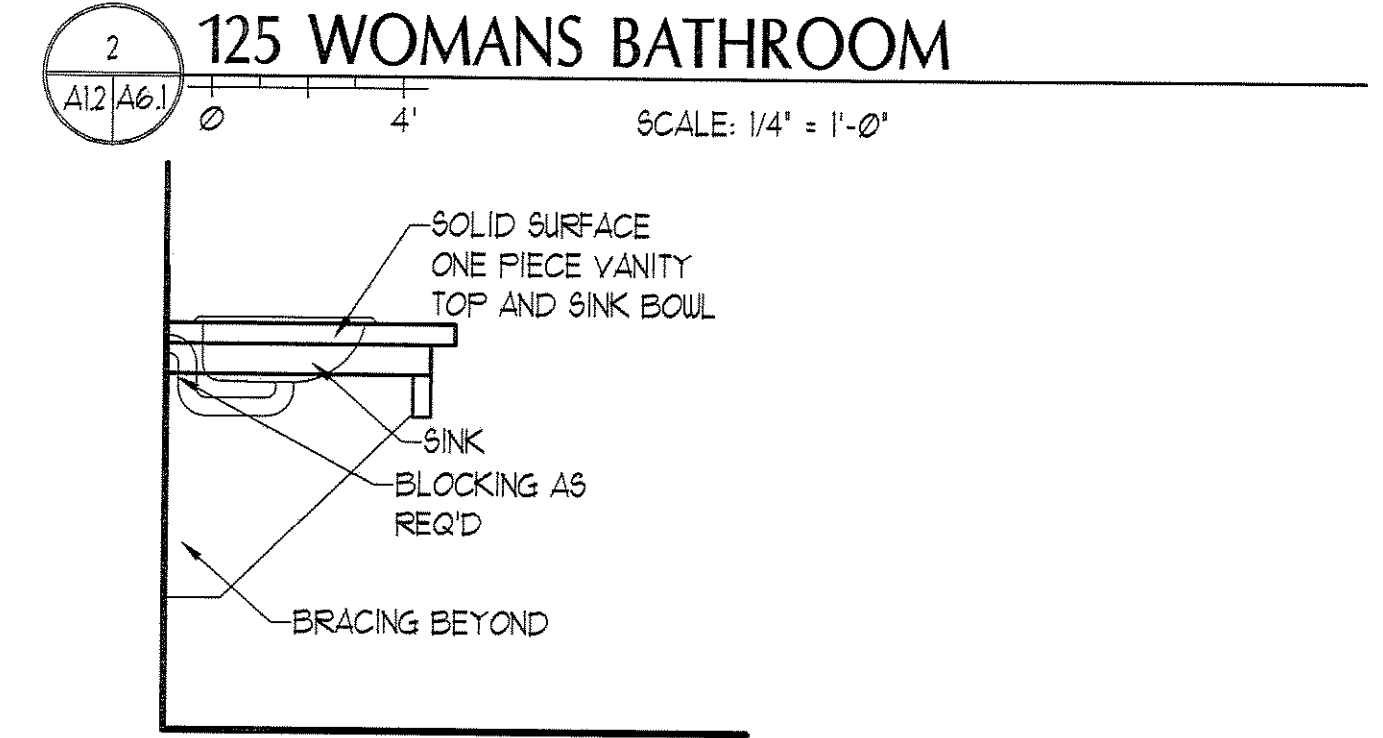
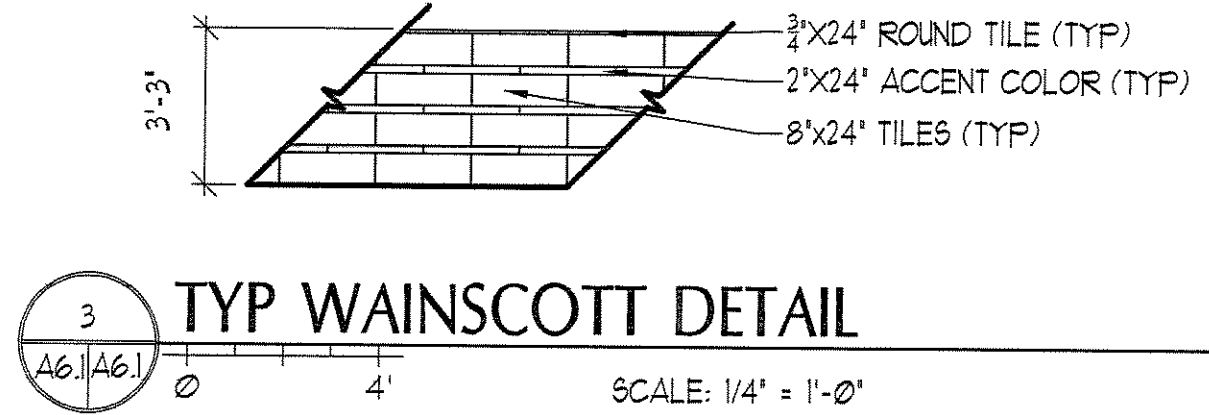
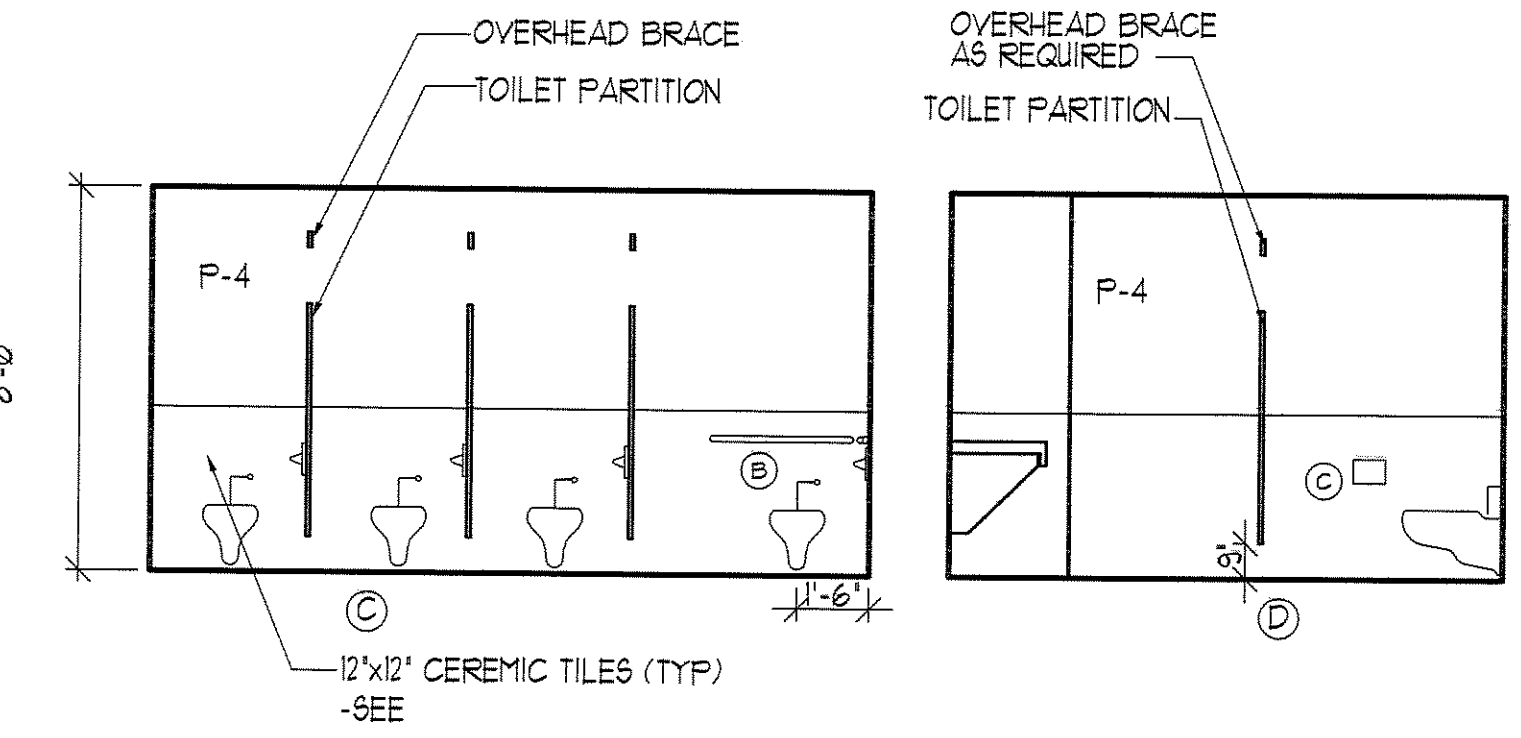
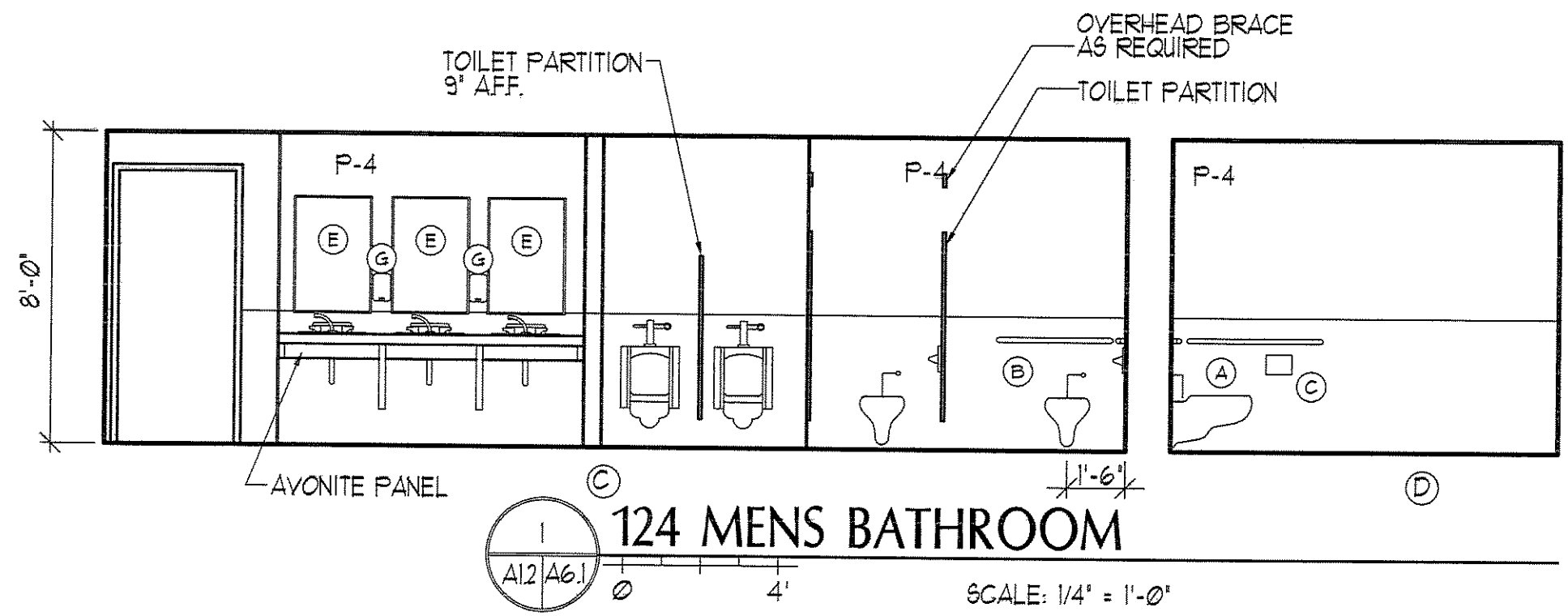


LEGEND
 (S) STANDARD MOUNTING HEIGHT
 (BF) BARRIER FREE ADULT MOUNTING HEIGHT
 (F) FINISH FLOOR LINE

NOTE
 1. MOUNT ALL FIXTURES AT STANDARD MOUNTING HEIGHT UNLESS INDICATED ON PLAN BY A (S) SYMBOL. A (BF) SYMBOL AT ANY ROOM SHALL INCLUDE ONE OF ANY FIXTURE AND ACCESSORY WITHIN THE ROOM.
 2. ALL SINKS TO HAVE ADA LEVER HANDLES.
 3. WRAP ALL EXPOSED PIPES BELOW SINKS.



BATHROOM ACCESSORIES SCHEDULE			
NUM	ITEM	MOUNTING HEIGHT	NOTES
(A)	3'-6" DIA GRAB BAR	C @ 2'-10" AFF	-
(B)	3'-0" DIA GRAB BAR	C @ 2'-10" AFF	-
(C)	TOILET PAPER DISPENSER	C @ 20" AFF	FBO/IBC
(D)	PAPER TOWEL DISPENSER	T.O. TOWEL 3'-4"	FBO/IBC
(E)	24" x 36" MIRROR	BOTTOM @ 40" AFF	-
(F)	HOOK	-	-
(G)	SOAP DISPENSER	-	FBO/IBC



PORT CITY ARCHITECTURE
 65 NEWBURY STREET
 PORTLAND, ME 04101
 207.761.9000
 fax: 207.761.2010
 lita@portcityarch.com

JACOBS CONSULTANCY
 GPR Laboratory Planning Practice

VANZELM ENGINEERS
 VANZELM HEYWOOD & SHADROFF, INC.

BECKER structural engineers, inc.

SYTDesign CONSULTANTS
 CIVIL ENGINEERING & LANDSCAPE ARCHITECTURE

ALLIED/COOK CONSTRUCTION

Favreau

Titan Mechanical
 Heavy Build Engineering - Mechanical Contractors

UNIVERSITY OF NEW ENGLAND COLLEGE OF PHARMACY
 716 STEVENS AVENUE, PORTLAND, ME

#	DATE	DESCRIPTION
		BID SET
	02/08/08	Date Issued
	06506	Project Number

SHEET NAME
ADA & BATH INTERIOR ELEVS

Drawn By
 EC, AM, EK

Checked By
 LAS

A6.0

BID SET - NOT FOR CONSTRUCTION