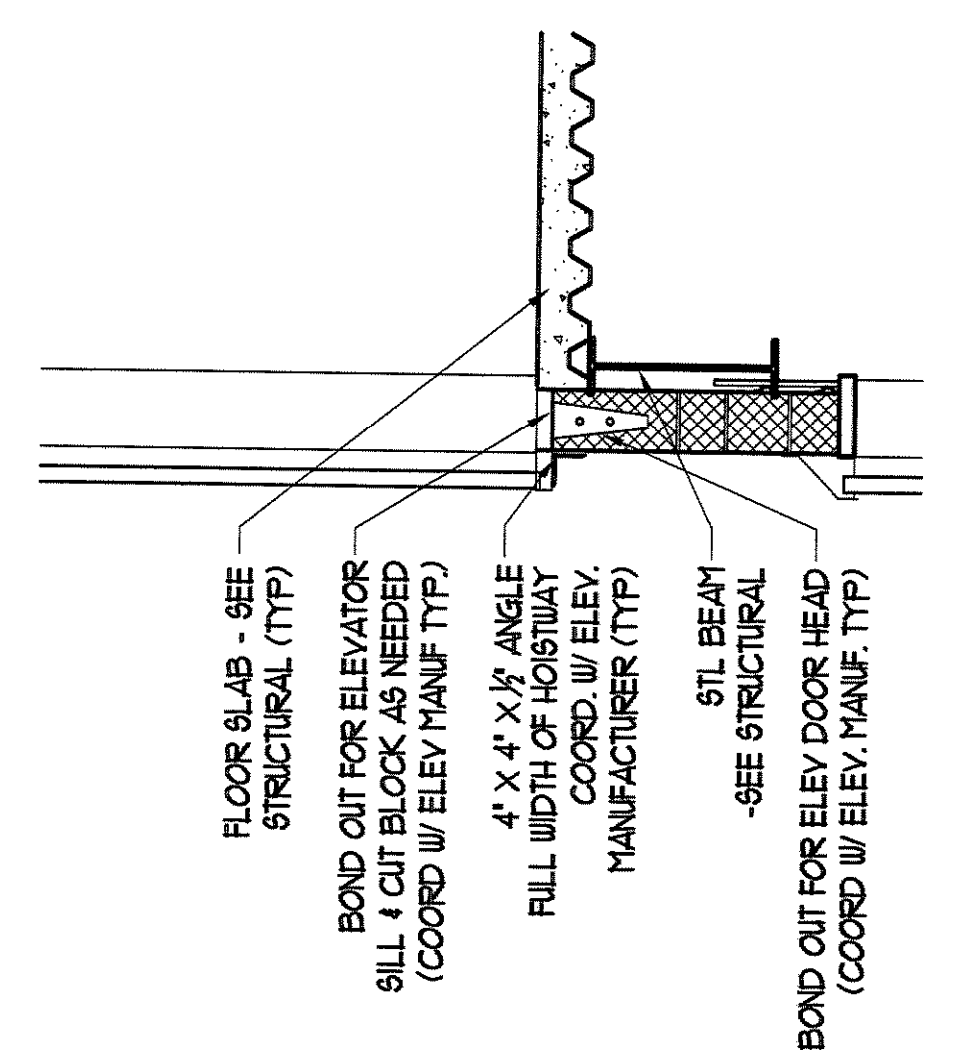


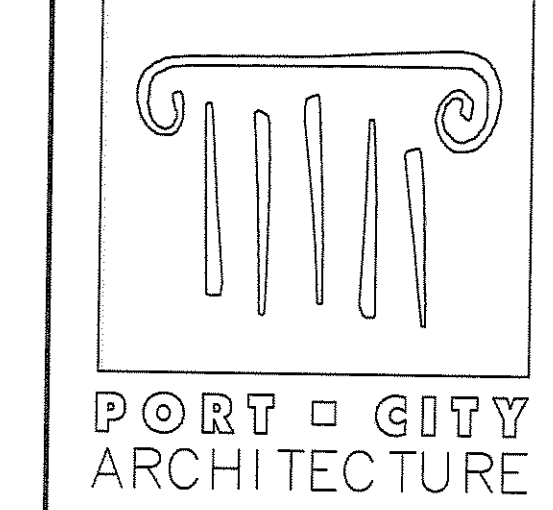
**1**  
A5.6  
ELEVATOR SECTION  
SCALE: 3/8" = 1'-0"



**2**  
A5.6  
ELEVATOR SECTION  
SCALE: 3/8" = 1'-0"

1'-6" x 6'-0" PAINTED GALV  
STL LADDER W/ ABRASIVE  
TREADS ANCHOR BOLTED TO  
SIDE AND BOTTOM OF SHAFT  
LOCATION ACCORDING TO  
CODE AND MANUFACTURER

1/4" GRACE PREFRUE 300R (30 MIL)  
(OR ARCHITECTURAL APPROVED  
EQUAL)



PORT CITY  
ARCHITECTURE  
65 NEWBURY STREET  
PORTLAND, ME 04101  
207.761.9000  
fax: 207.761.2010  
lita@portcityarch.com

**JACOBS**  
CONSULTANCY  
SPP Laboratory Planning Practice

**VANZELM**  
ENGINEERS  
VANZELM, NEWBURY & SEABOARD, INC.

**BECKER**  
Structural Engineers, Inc.

**SYTDesign**  
CONSULTANTS  
CIVIL ENGINEERING & LANDSCAPE ARCHITECTURE

**ALLIED/COOK**  
CONSTRUCTION

**Fareau**  
ELECTRIC

**Titan Mechanical**  
Inc. Heat Exchanger, Modulator, Cooling

UNIVERSITY OF NEW ENGLAND

COLLEGE OF  
PHARMACY

716 STEVENS AVENUE, PORTLAND, ME

| DATE           | DESCRIPTION |
|----------------|-------------|
|                | BID SET     |
| Date Issued    | 02/08/08    |
| Project Number | 06506       |

SHEET NAME  
**ELEVATOR SECTION**

Drawn By  
EC, AM, BK

Checked By  
LAS

**A5.6**

**BID SET - NOT FOR CONSTRUCTION**