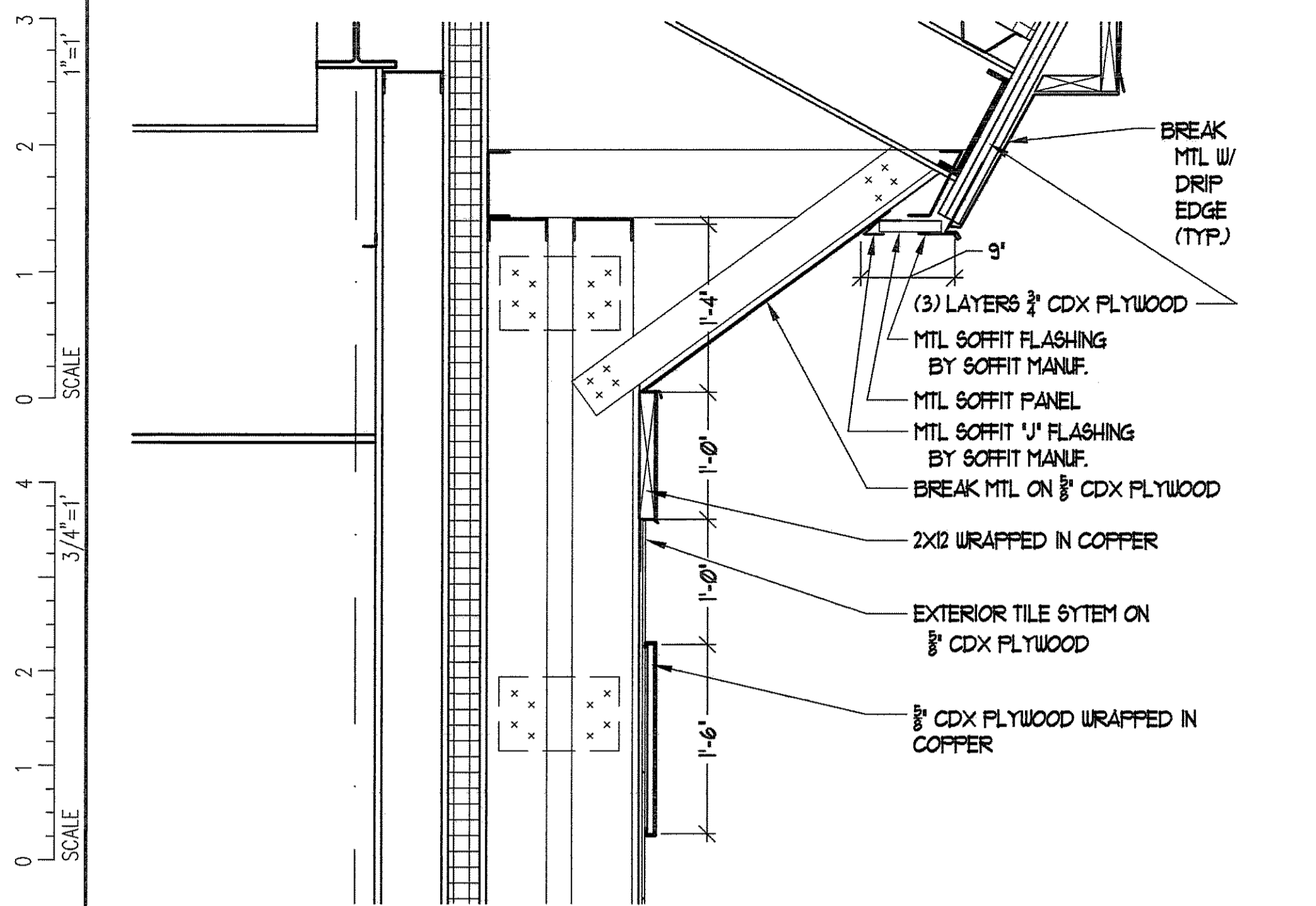
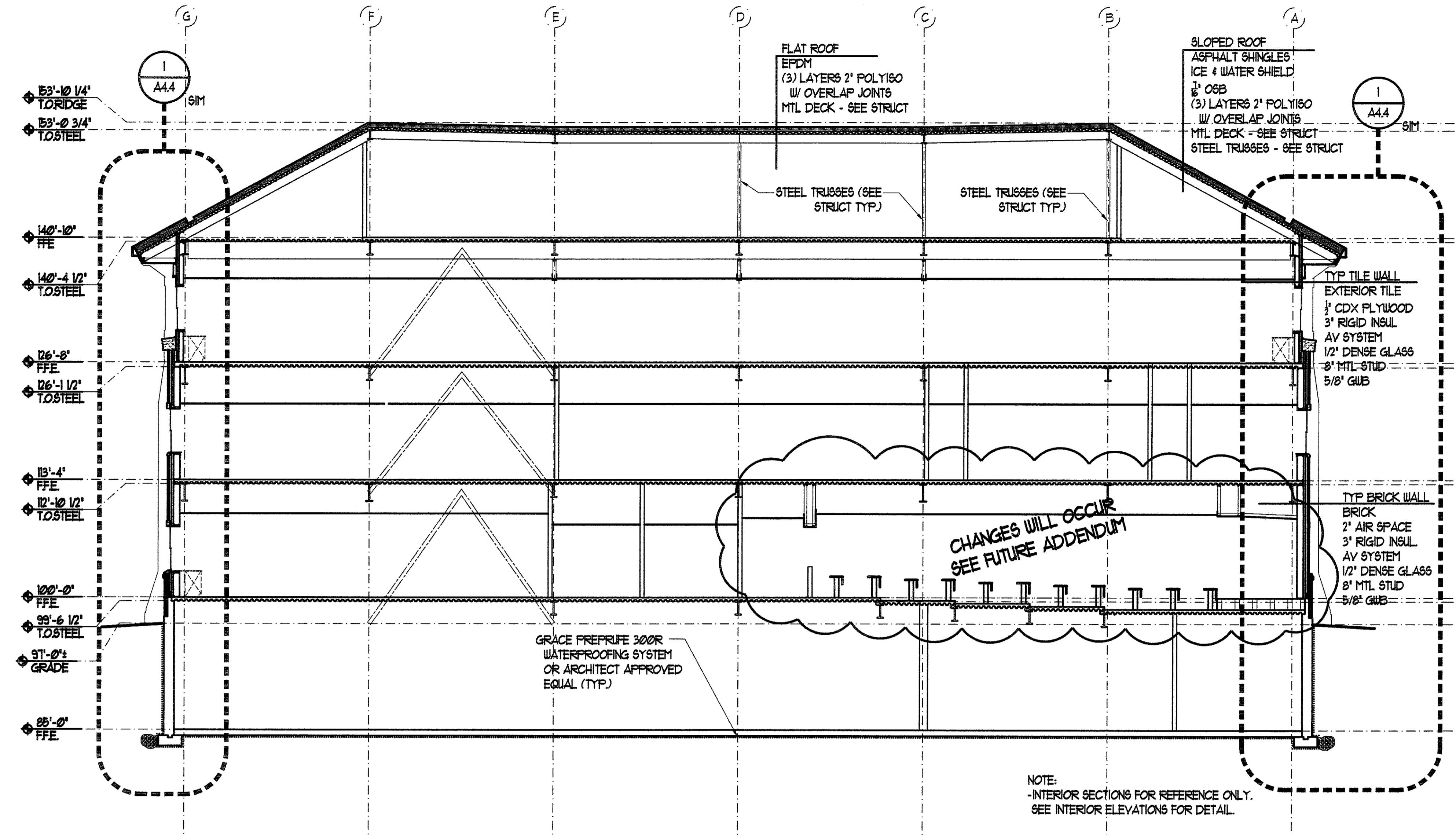


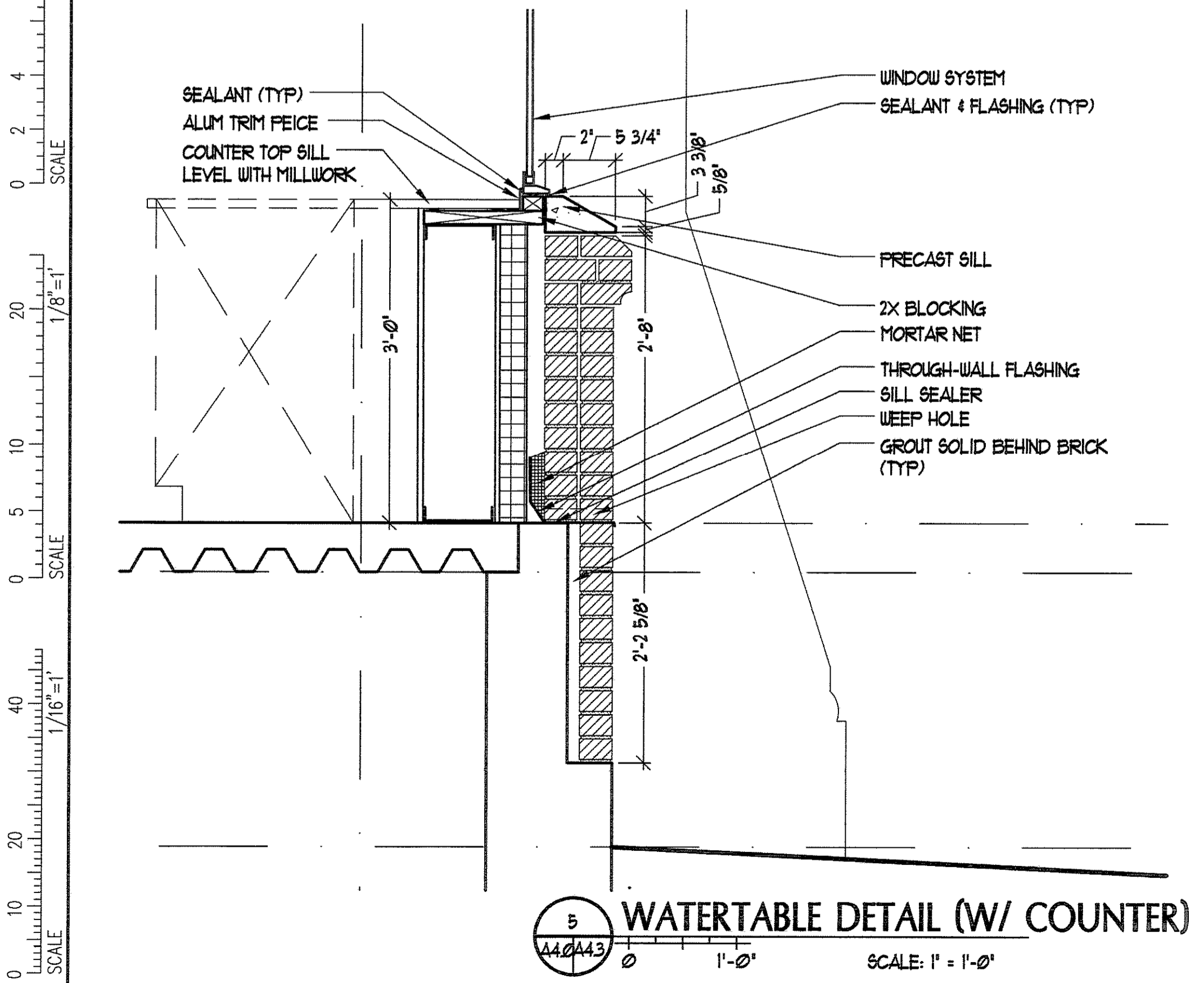
IF THIS SHEET IS NOT 24 X 36 IT IS A REDUCED SCALE PRINT - SCALE ACCORDINGLY



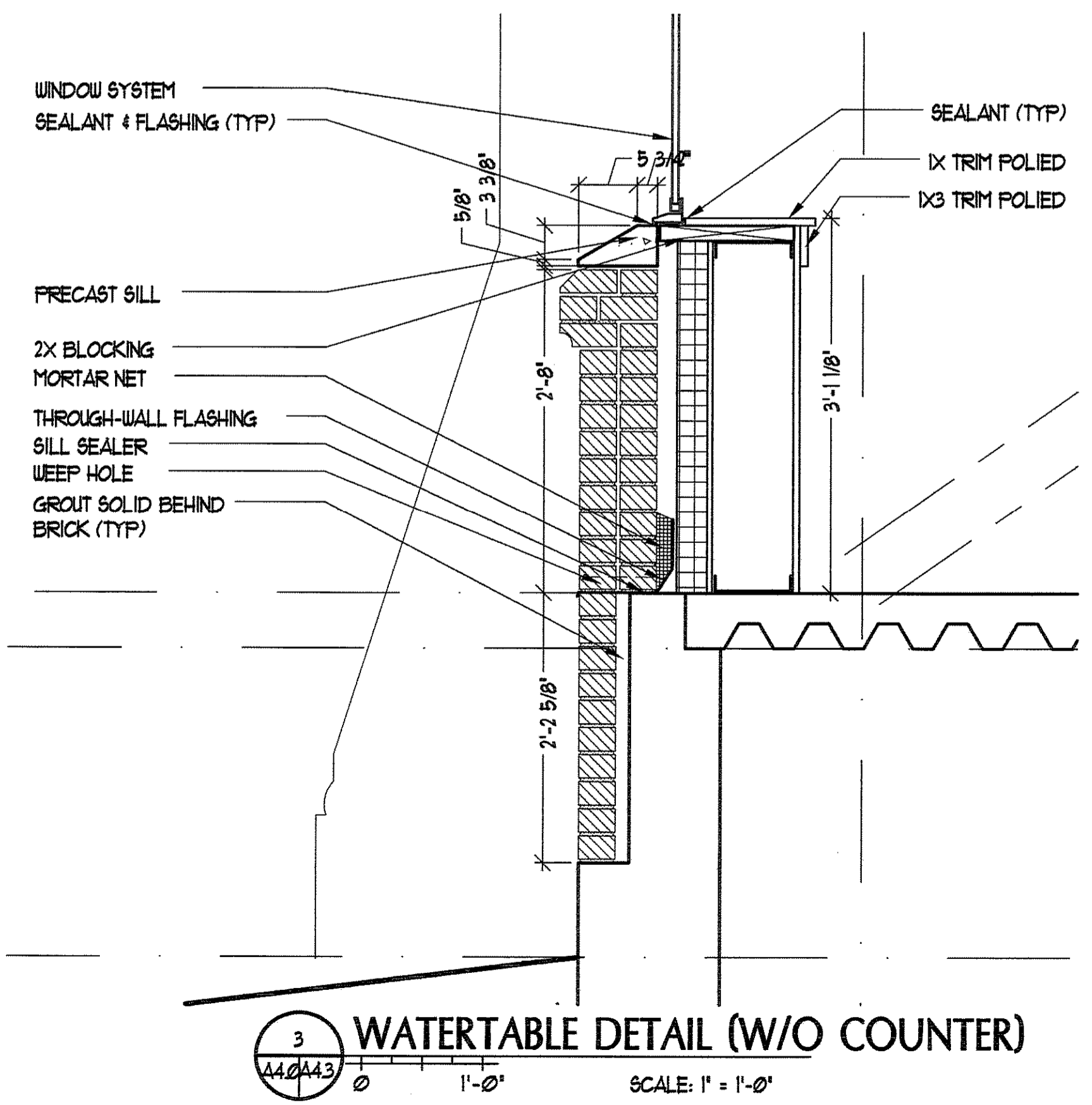
4 UPPER PIER SECTION
 SCALE: 1" = 1'-0"



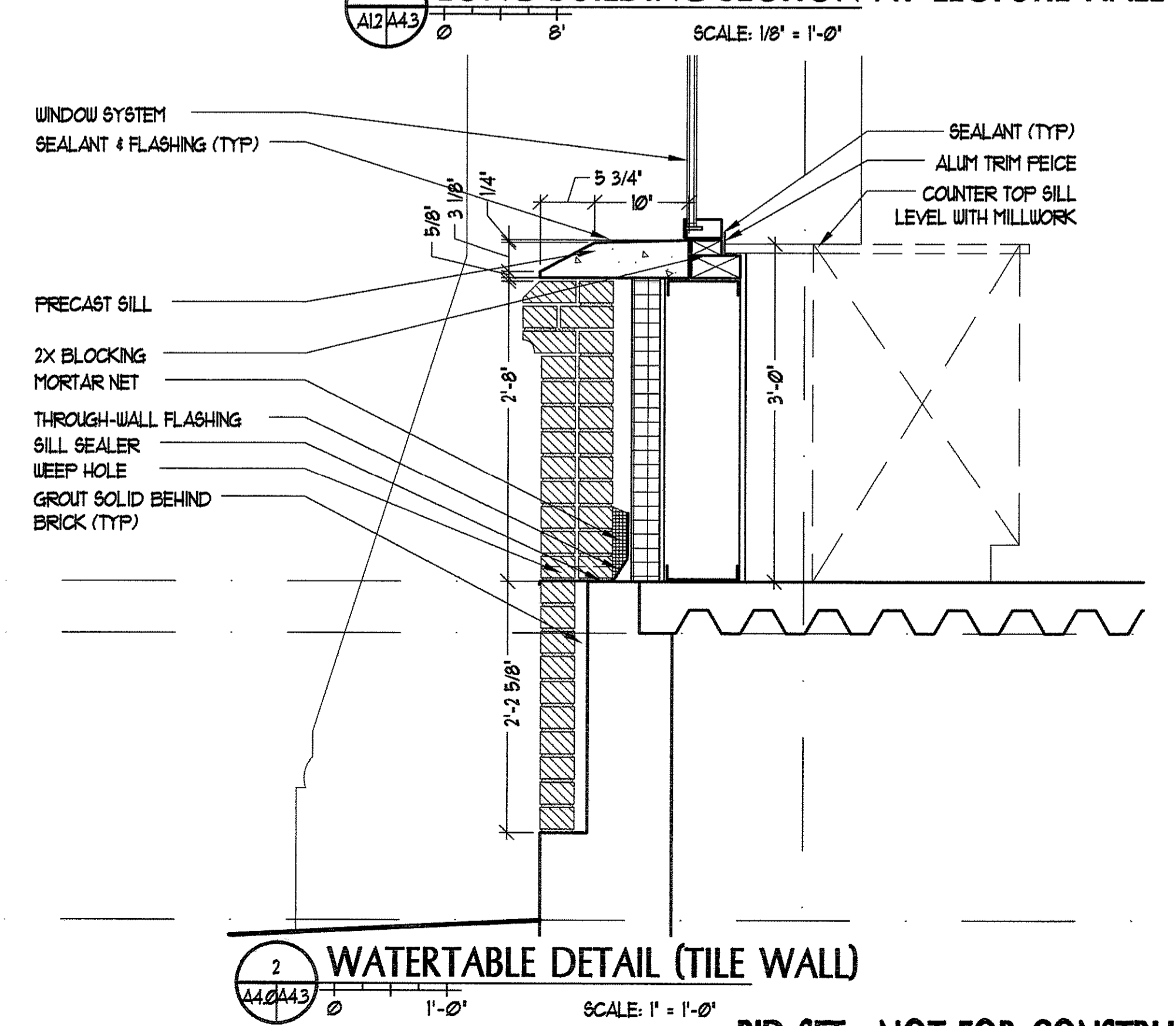
1 LONG BUILDING SECTION AT LECTURE HALL
 SCALE: 1/8" = 1'-0"



5 WATERTABLE DETAIL (W/ COUNTER)
 SCALE: 1" = 1'-0"



3 WATERTABLE DETAIL (W/O COUNTER)
 SCALE: 1" = 1'-0"



2 WATERTABLE DETAIL (TILE WALL)
 SCALE: 1" = 1'-0"

BID SET - NOT FOR CONSTRUCTION

PORT CITY ARCHITECTURE
 65 NEWBURY STREET
 PORTLAND, ME 04101
 207.761.9000
 fax: 207.761.2010
 lita@portcityarch.com

JACOBS CONSULTANCY
 GPR Laboratory Planning Practice

VANZELM ENGINEERS
 VANZELM, HEDWOOD & SHAWFORD, INC.

BECKER structural engineers, inc.

SYTDDesign CONSULTANTS
 CIVIL ENGINEERING & LANDSCAPE ARCHITECTURE

ALLIED/COOK CONSTRUCTION

Favreau ELECTRIC

Titan Mechanical

UNIVERSITY OF NEW ENGLAND
COLLEGE OF PHARMACY
 716 STEVENS AVENUE, PORTLAND, ME

DATE	DESCRIPTION
	BID SET
Date Issued	02/08/08
Project Number	06506
SHEET NAME	
LONG BUILDING SECTION	
Drawn By	EC, AM, BK
Checked By	LAS
A4.3	