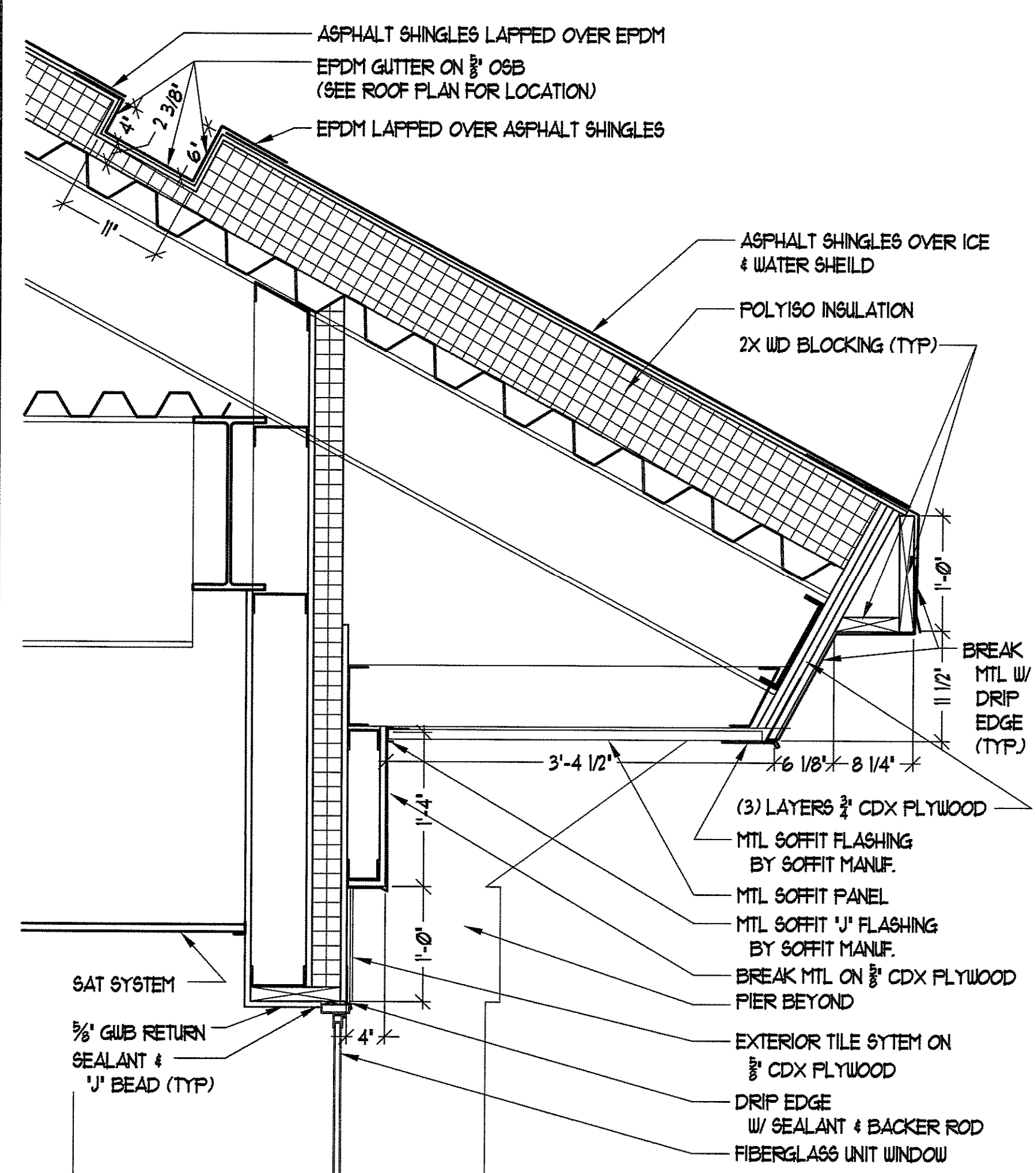
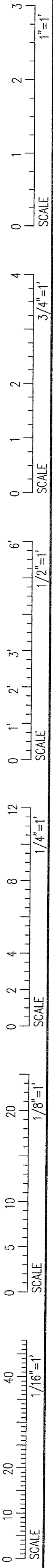
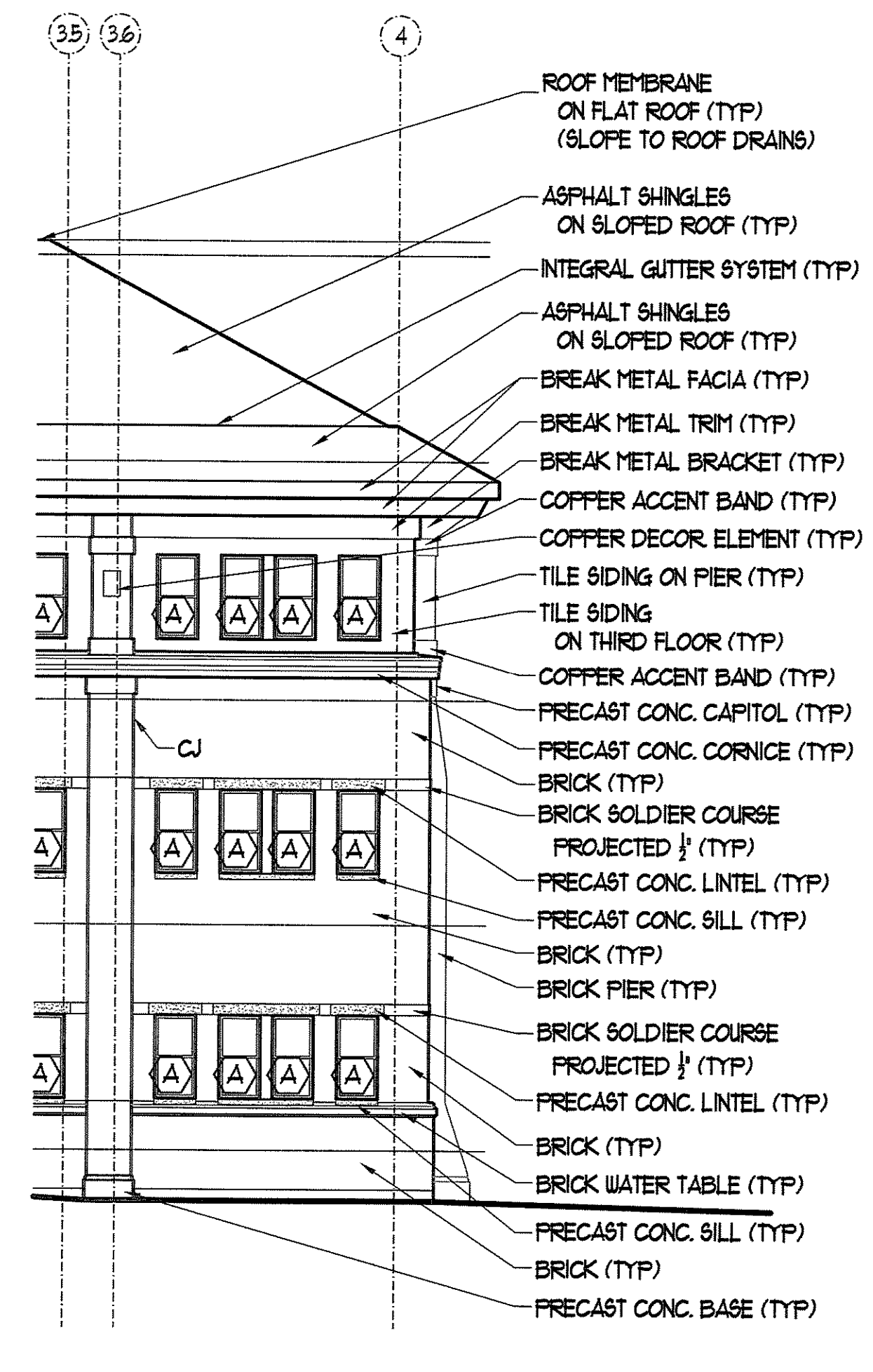


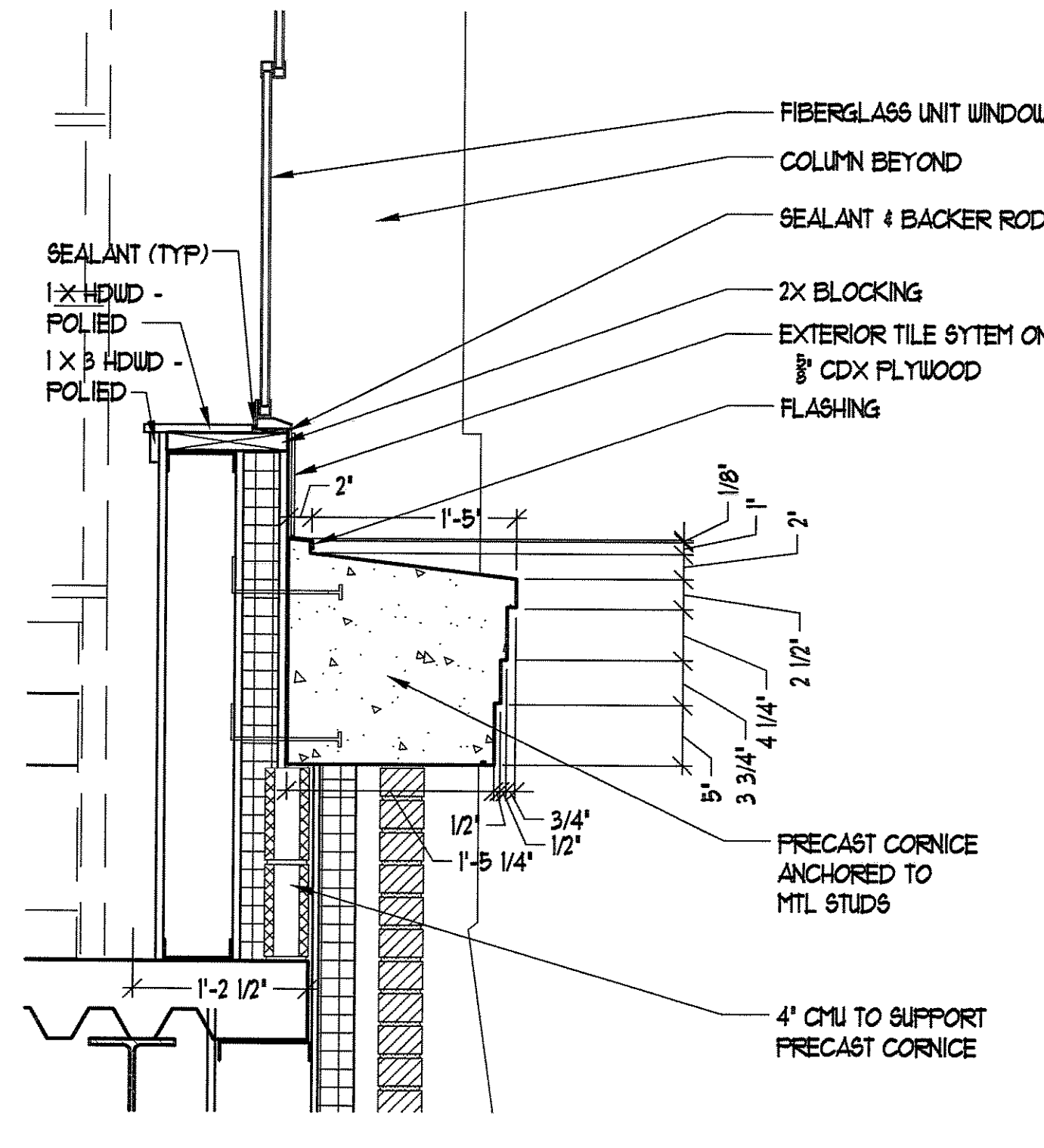
IF THIS SHEET IS NOT 24 X 36 IT IS A REDUCED SCALE PRINT - SCALE ACCORDINGLY



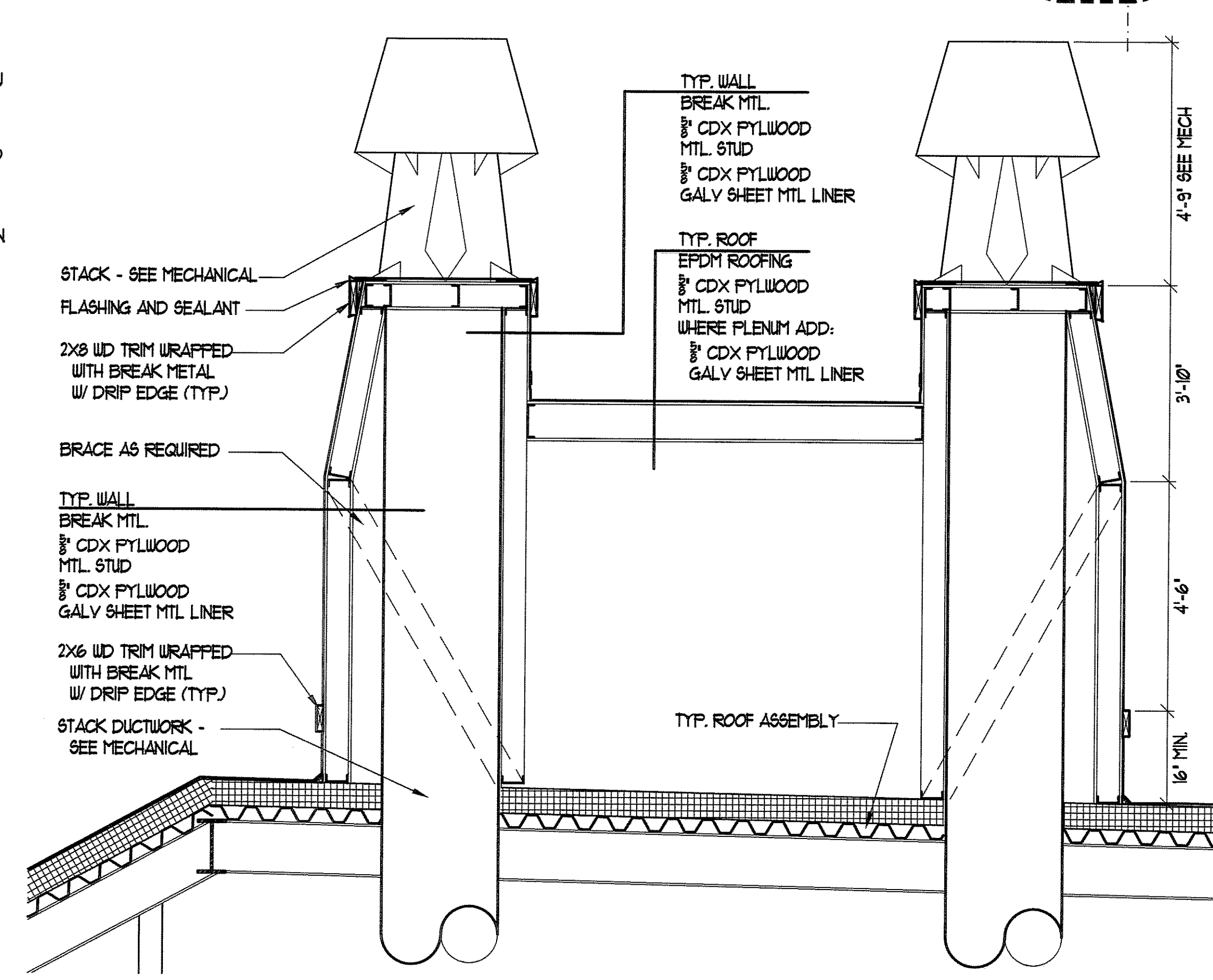
6 EVE & WINDOW HEAD DETAIL
SCALE: 1/8" = 1'-0"



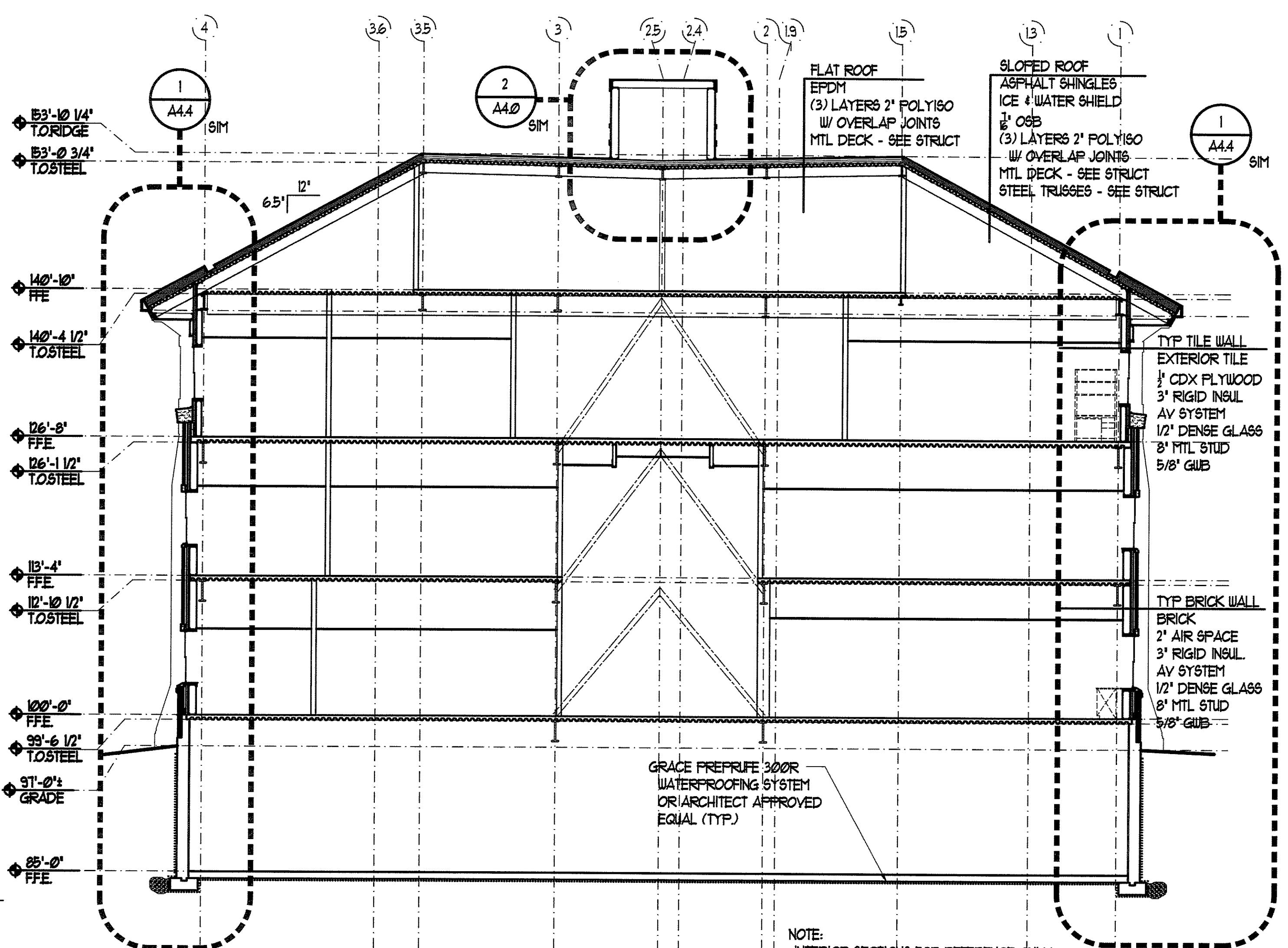
4 PARTIAL ELEVATION
SCALE: 1/8" = 1'-0"



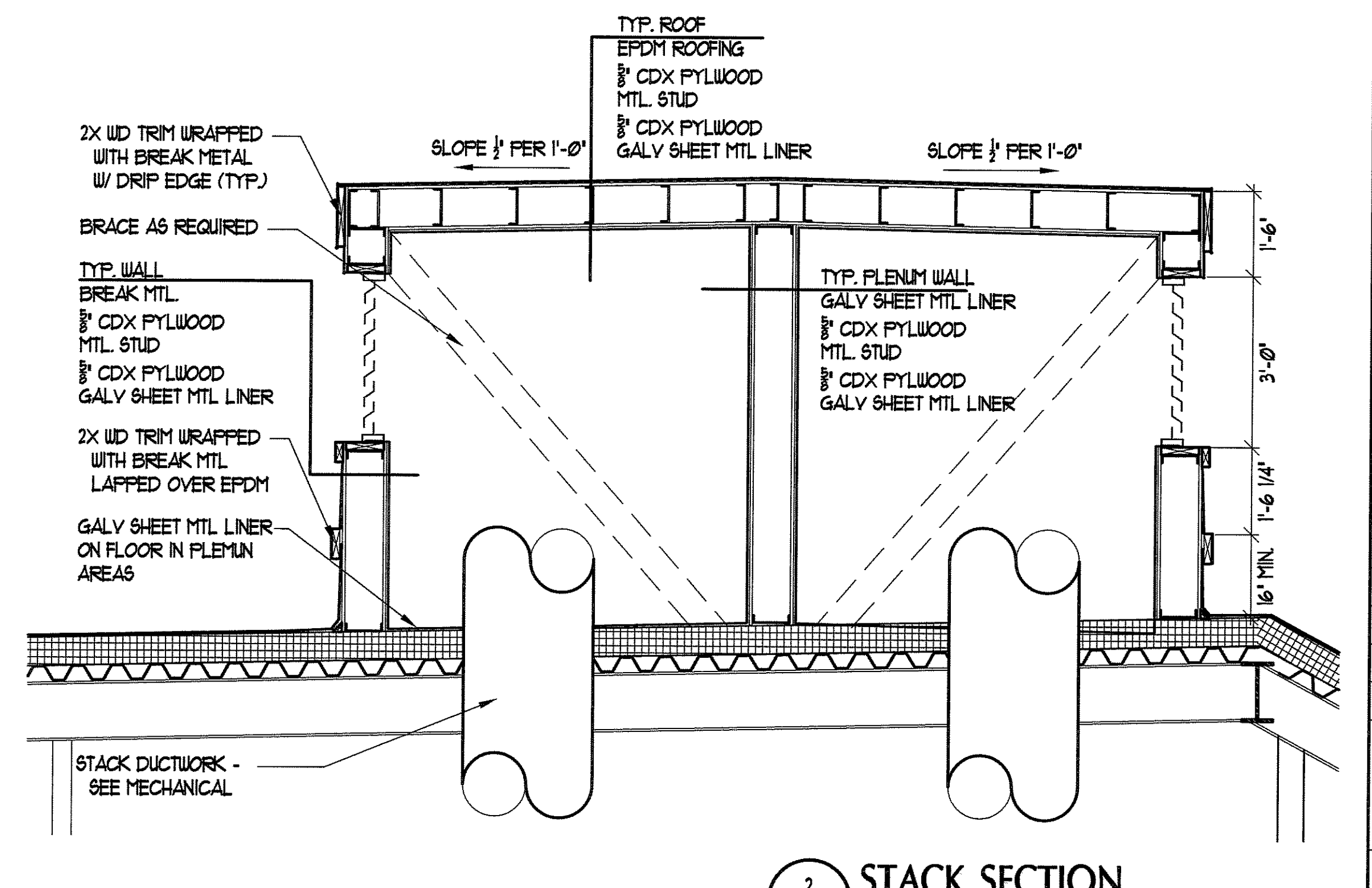
1 WINDOW SILL DETAIL
SCALE: 1/8" = 1'-0"



5 STACK SECTION
SCALE: 1/2" = 1'-0"



2 SHORT SECTION
SCALE: 1/8" = 1'-0"



2 STACK SECTION
SCALE: 1/2" = 1'-0"

BID SET - NOT FOR CONSTRUCTION

PORT CITY ARCHITECTURE
65 NEWBURY STREET
PORTLAND, ME 04101
207.761.9000
fax: 207.761.2010
lita@portcityarch.com

JACOBS CONSULTANCY
OP&L Laboratory Planning Practice

VANZELM ENGINEERS
VANZELM REYWOOD & SEADFORD, INC.

BECKER structural engineers, inc.

SYTDDesign CONSULTANTS
CIVIL ENGINEERING & LANDSCAPE ARCHITECTURE

ALLIED/COOK CONSTRUCTION

Favreau
ALUMINUM

Titan Mechanical
Group Building Engineering - Mechanical Contractor

UNIVERSITY OF NEW ENGLAND COLLEGE OF PHARMACY
716 STEVENS AVENUE, PORTLAND, ME

DATE	DESCRIPTION
	BID SET
Date Issued	02/08/08
Project Number	06506
SHEET NAME	
SHORT BUILDING SECTION	
Drawn By	EC, AM, EK
Checked By	LAS
A4.0	