

PORT CITY ARCHITECTURE

65 NEWBURY STREET
PORTLAND, ME 04101
207.761.9000
fax: 207.761.2010
lita@portcityarch.com

JACOBS CONSULTANCY
OP&L Laboratory Planning Practice

VANZELM ENGINEERS
VANZELM, HENWOOD & SHADROFF, INC.

BECKER
structural engineers, inc.

SYTDesign CONSULTANTS
CIVIL ENGINEERING & LANDSCAPE ARCHITECTURE

ALLIED/COOK CONSTRUCTION

Favreau ELECTRIC

Titan Mechanical

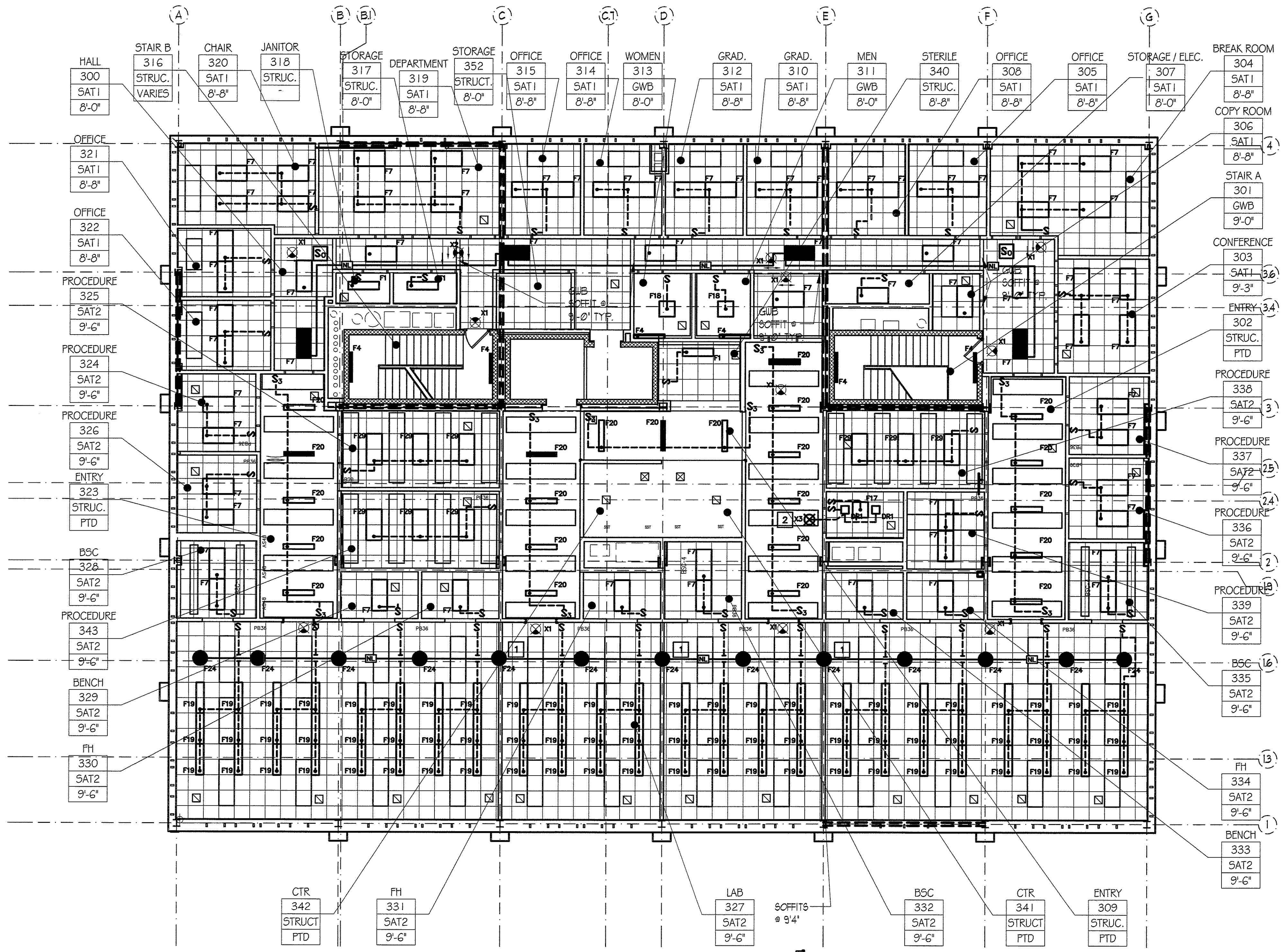
UNIVERSITY OF NEW ENGLAND

COLLEGE OF PHARMACY

716 STEVENS AVENUE, PORTLAND, ME

IF THIS SHEET IS NOT 24 X 36 IT IS A REDUCED SCALE PRINT - SCALE ACCORDINGLY

SCALE 1"=1'
SCALE 3/4"=1'
SCALE 1/2"=1'
SCALE 1/4"=1'
SCALE 1/8"=1'
SCALE 1/16"=1'



THIRD FLOOR RCP
A2.4/A2.4 0 8'-0" SCALE: 1/8" = 1'-0"

#	DATE	DESCRIPTION
		BID SET
	02/08/08	Date Issued
	06506	Project Number

SHEET NAME
THIRD FLOOR RCP

Drawn By
EC, A1, EK

Checked By
LAS

A2.4

BID SET - NOT FOR CONSTRUCTION