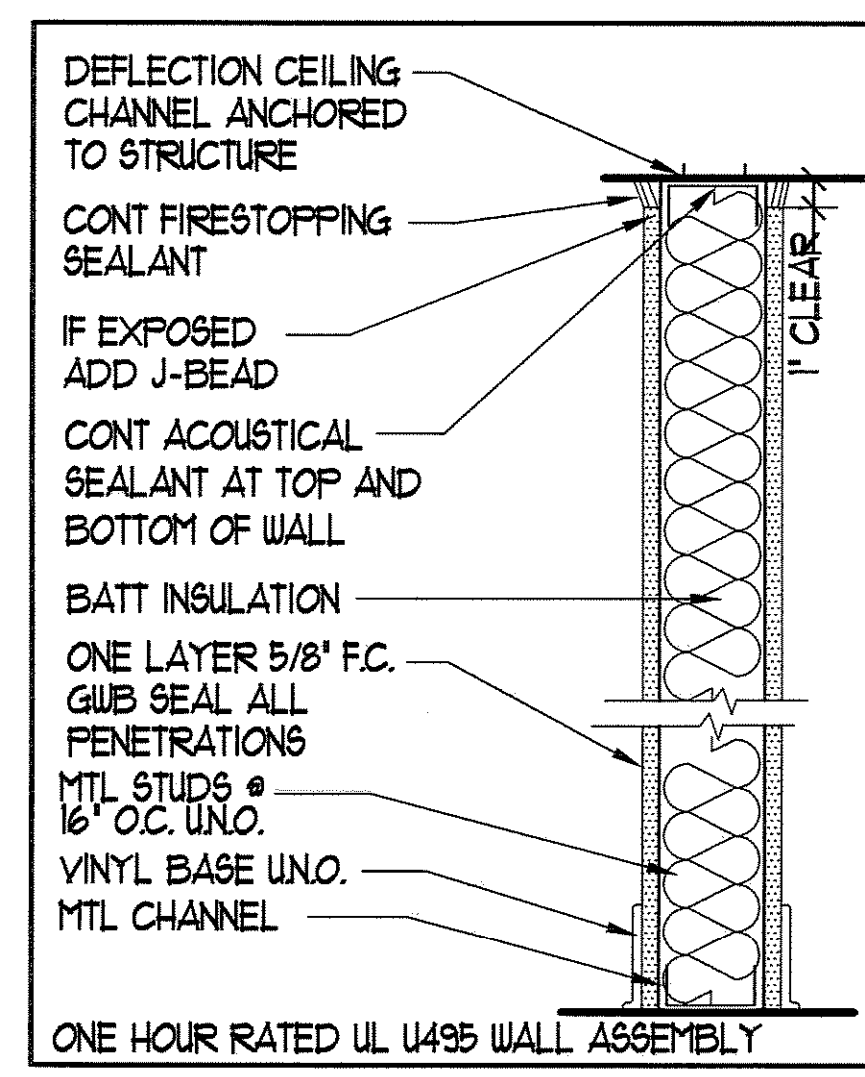
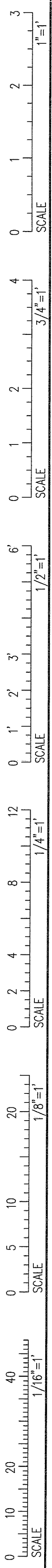
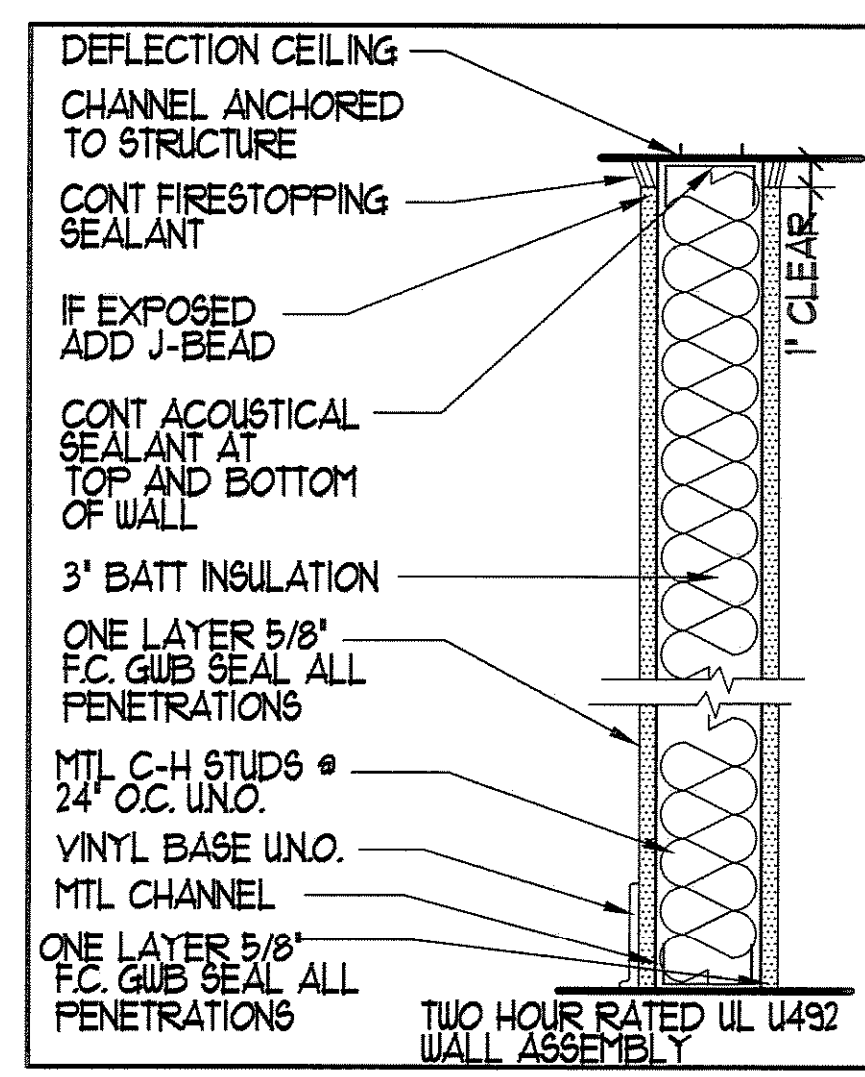


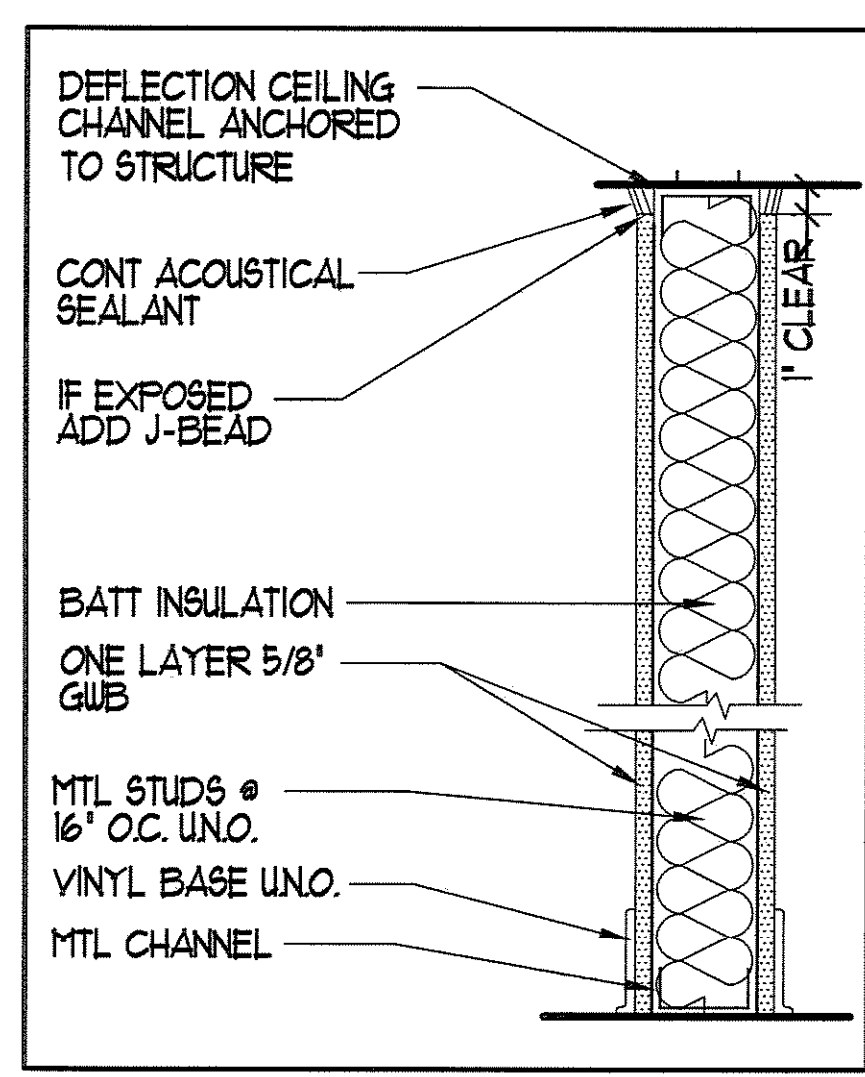
IF THIS SHEET IS NOT 24 X 36 IT IS A REDUCED SCALE PRINT - SCALE ACCORDINGLY



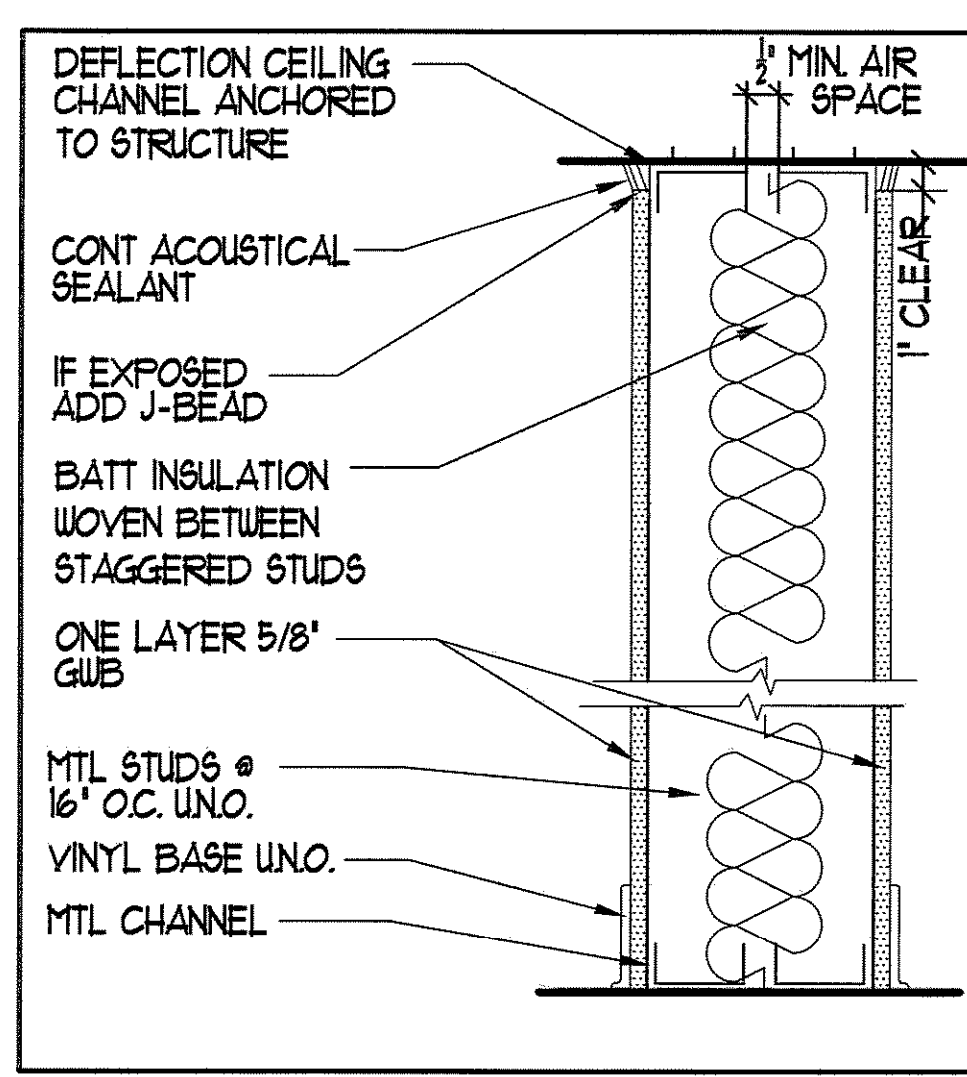
- 1A 3 5/8" METAL STUD-FULL HGT
1 HOUR RATED UL U495 WALL ASSEMBLY
- 1B 6" METAL STUD-FULL HGT
1 HOUR RATED UL U495 WALL ASSEMBLY
- 1C 8" METAL STUD-FULL HGT
1 HOUR RATED UL U495 WALL ASSEMBLY
- 1D 10" METAL STUD-FULL HGT
1 HOUR RATED UL U495 WALL ASSEMBLY
- 1E DOUBLE 3 5/8" MTL STUD
1 HOUR RATED UL U495 WALL ASSEMBLY
-SEE PLAN FOR THICKNESS



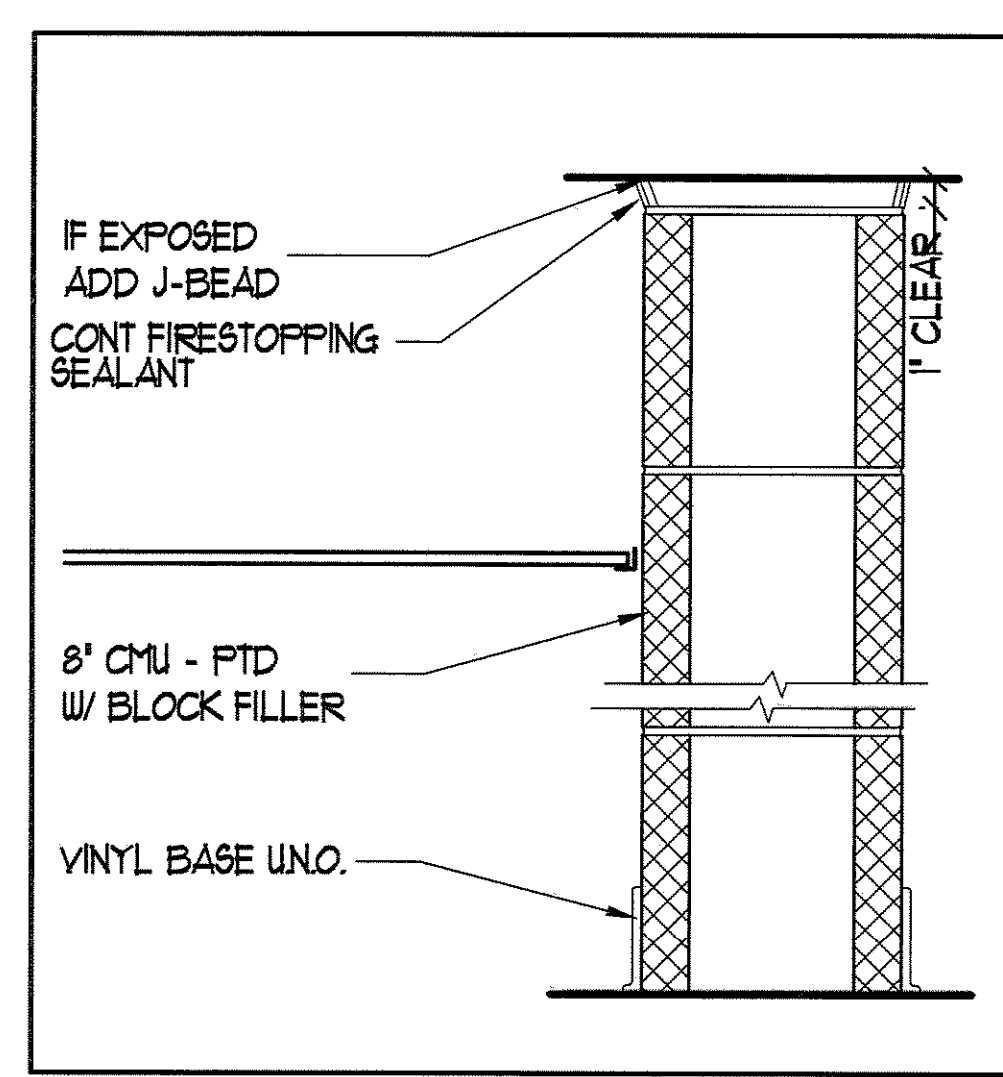
- 2A 3 5/8" METAL STUD - FULL HEIGHT
2 HOUR RATED UL U492 WALL ASSEMBLY
- 2B 6" METAL STUD - FULL HEIGHT
2 HOUR RATED UL U492 WALL ASSEMBLY
- 2C 8" METAL STUD - FULL HEIGHT
2 HOUR RATED UL U492 WALL ASSEMBLY



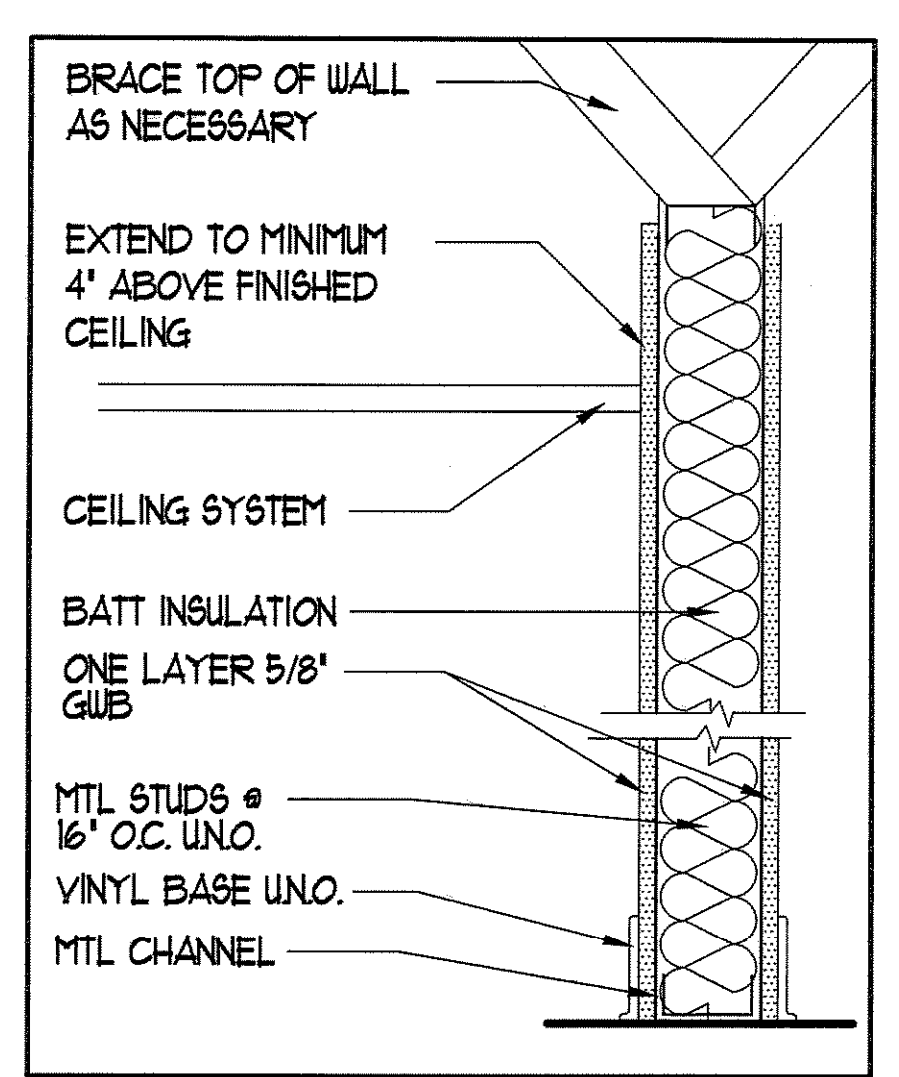
- AA 3 5/8" METAL STUD-FULL HGT
ACOUSTICAL WALL
- AB 6" METAL STUD-FULL HGT
ACOUSTICAL WALL
- AC 8" METAL STUD-FULL HGT
ACOUSTICAL WALL
- AE 12" METAL STUD-FULL HGT
ACOUSTICAL WALL
- AD 10" METAL STUD-FULL HGT
ACOUSTICAL WALL
- DA 3 5/8" METAL STUD-FULL HGT ACOUSTICAL
WALL W/ WATER RESIST HIGH IMPACT GUB
- DB 6" METAL STUD-FULL HGT ACOUSTICAL
WALL W/ WATER RESIST HIGH IMPACT GUB
- DC 8" METAL STUD-FULL HGT ACOUSTICAL
WALL W/ WATER RESIST HIGH IMPACT GUB
- DD 10" METAL STUD-FULL HGT ACOUSTICAL
WALL W/ WATER RESIST HIGH IMPACT GUB



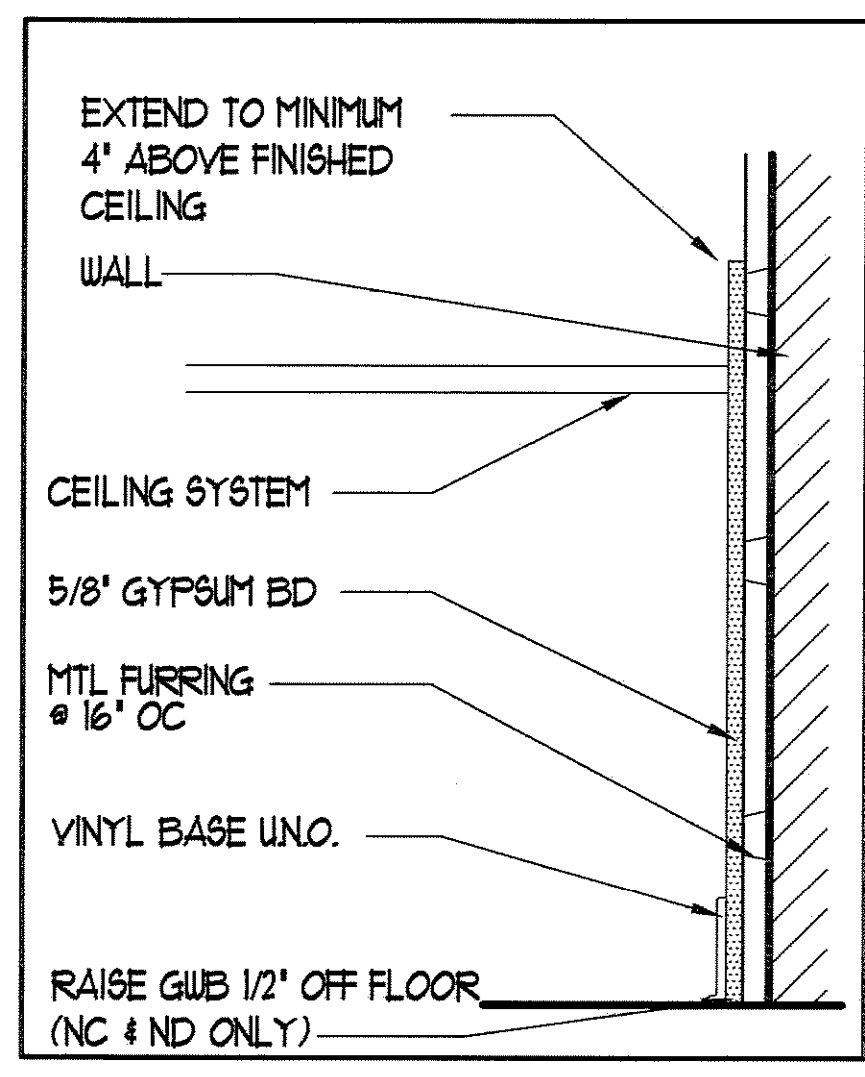
- BA 3 5/8" DOUBLE METAL STUD-FULL HGT
ACOUSTICAL WALL - SEE PLAN FOR THICKNESS
- BB 3 5/8" DOUBLE METAL STUD-FULL HGT
ACOUSTICAL WALL - TOTAL 15 1/2" THICKNESS



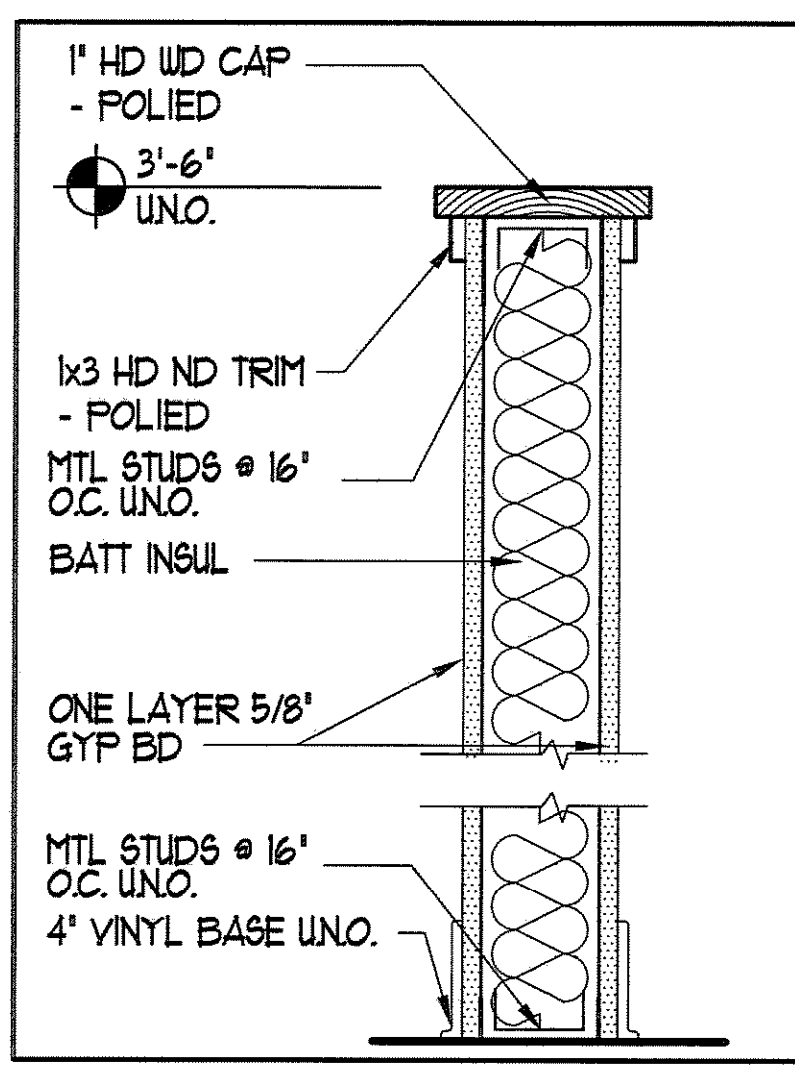
- CA 8" CMU WALL
2 HOUR RATED UL U905



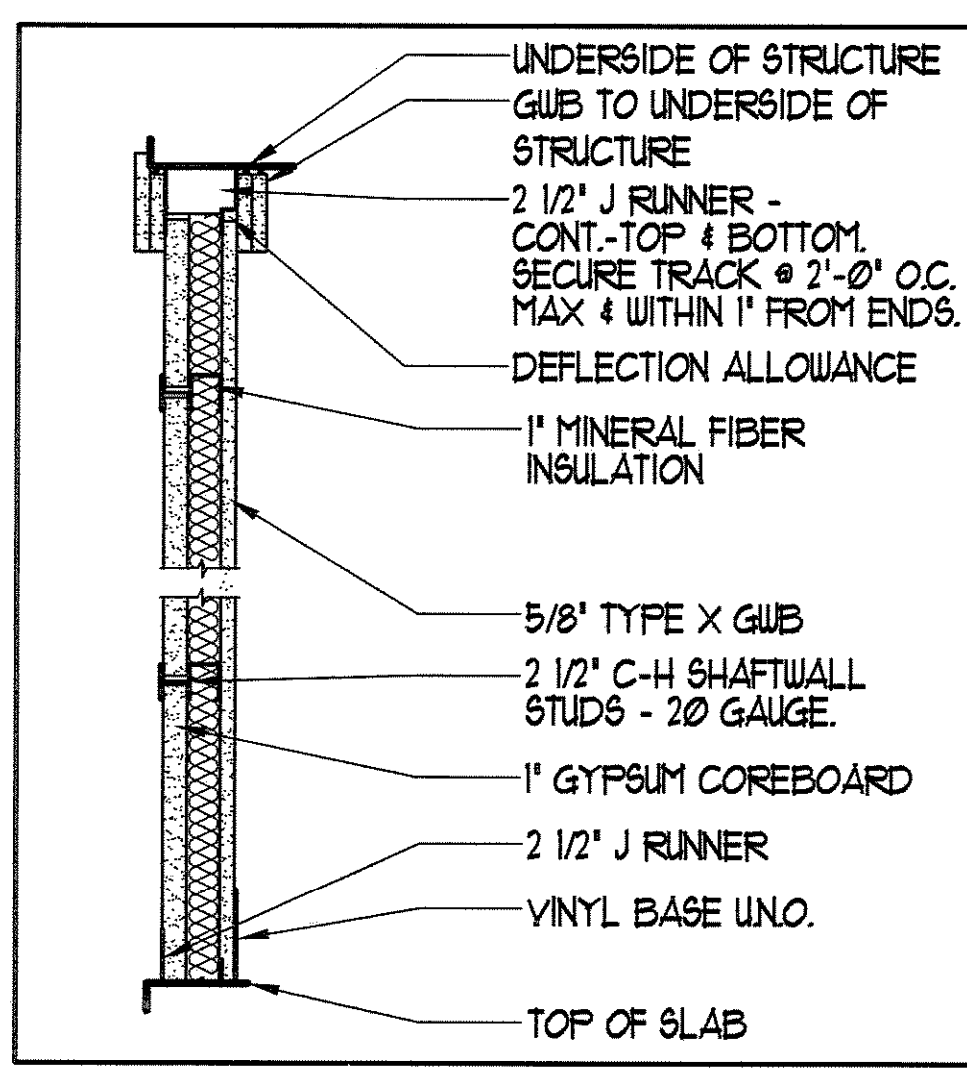
- EA 3 5/8" METAL STUD PARTITION WALL
- EB 6" METAL STUD PARTITION WALL
- EC 8" METAL STUD PARTITION WALL
- ED 10" METAL STUD PARTITION WALL
- FA 3 5/8" METAL PARTITION WALL
W/ WATER RESIST HIGH IMPACT GUB
- FB 6" METAL STUD PARTITION WALL
W/ WATER RESIST HIGH IMPACT GUB
- FC 8" METAL STUD PARTITION WALL
W/ WATER RESIST HIGH IMPACT GUB
- FD 10" METAL STUD PARTITION WALL
W/ WATER RESIST HIGH IMPACT GUB



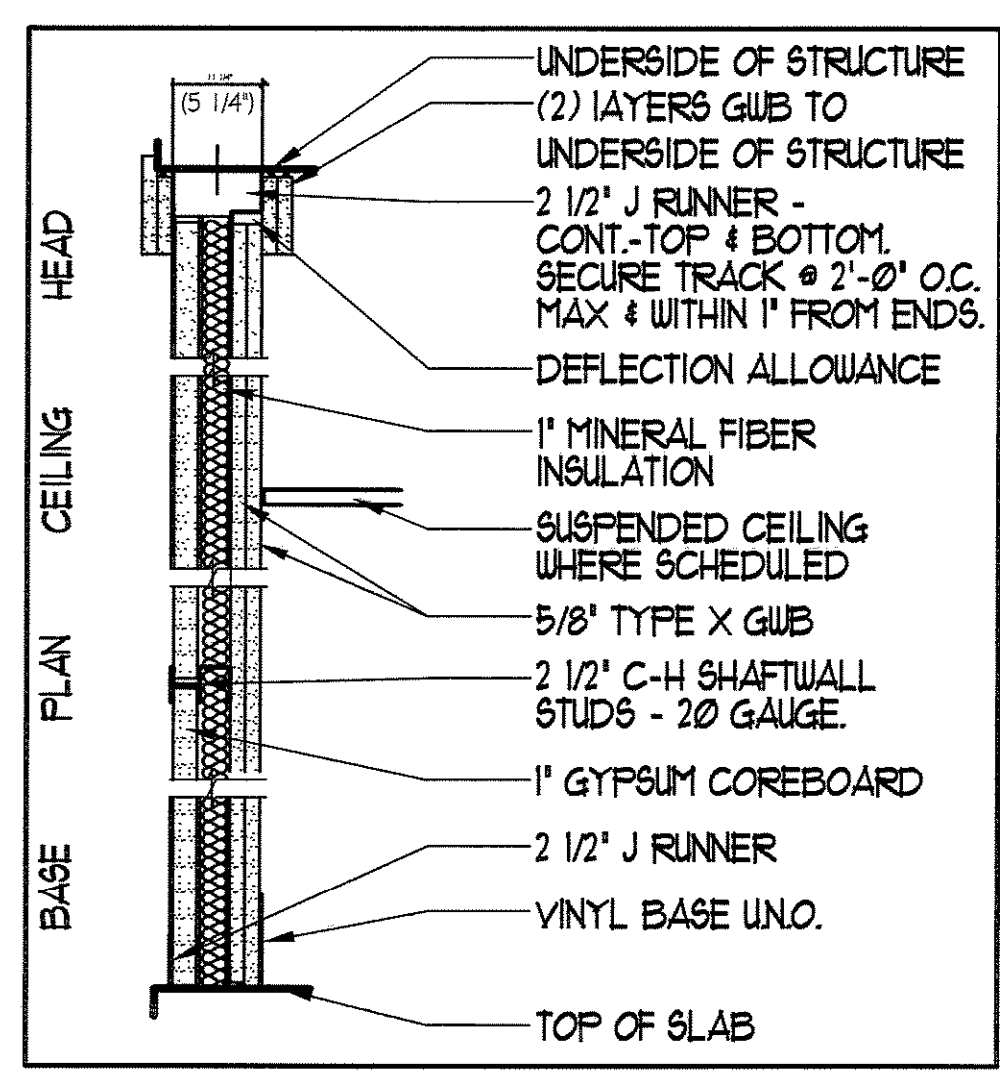
- NA FURRED WALL W/ 1/8" MTL HAT CHANNEL
- NE FURRED WALL W/ 3 5/8" MTL STUD
- SEE PLAN FOR THICKNESS
- NC FURRED WALL W/ 1/8" MTL HAT CHANNEL
WALL W/ WATER RESIST HIGH IMPACT GUB
- ND FURRED WALL W/ 3 5/8" MTL STUD
- SEE PLAN FOR THICKNESS
WALL W/ WATER RESIST HIGH IMPACT GUB
- NE FURRED WALL W/ 6" MTL STUD
- SEE PLAN FOR THICKNESS



- HJ 3 5/8" MTL STUD HALF WALL



- IS 2 1/2" SHAFT WALL
1 HOUR RATED UL U469 WALL ASSEMBLY



- IS 2 1/2" SHAFT WALL
2 HOUR RATED UL U438 WALL ASSEMBLY

GENERAL WALL TYPE NOTES:
 1. IN RESEARCH LABS, NMR AND VIVARIUM HOLD GUB MINIMUM 1/2" FROM FINISH FLOOR
 2. AT ALL WET AREAS NOT ALREADY INDICATED AS WATER RESISTANT, WATER RESISTANT GUB NEEDS TO BE PROVIDED

PORT CITY ARCHITECTURE
 65 NEWBURY STREET
 PORTLAND, ME 04101
 207.761.9000
 fax: 207.761.2010
 lita@portcityarch.com

JACOBS CONSULTANCY
 OP&P Laboratory Planning Practice

VANZELM ENGINEERS
 VANZELM BRYWOOD & SHALFORD, INC.

BECKER
 structural engineers, inc.

SYTDesign CONSULTANTS
 CIVIL ENGINEERING & LANDSCAPE ARCHITECTURE

ALLIED/COOK CONSTRUCTION

Favreau

Titan Mechanical
 Design-Build Engineering - Mechanical Contractors

UNIVERSITY OF NEW ENGLAND COLLEGE OF PHARMACY
 76 STEVENS AVENUE, PORTLAND, ME

DATE	DESCRIPTION
	BID SET
Date Issued	02/08/08
Project Number	06506
TITLE SHEET	
SHEET NAME	
WALL TYPES	
Drawn By	EC, AM, EK
Checked By	LAS

BID SET - NOT FOR CONSTRUCTION

COPYRIGHT: Reuse or reproduction of the contents of this document is not permitted without written permission of PORT CITY ARCHITECTURE PA