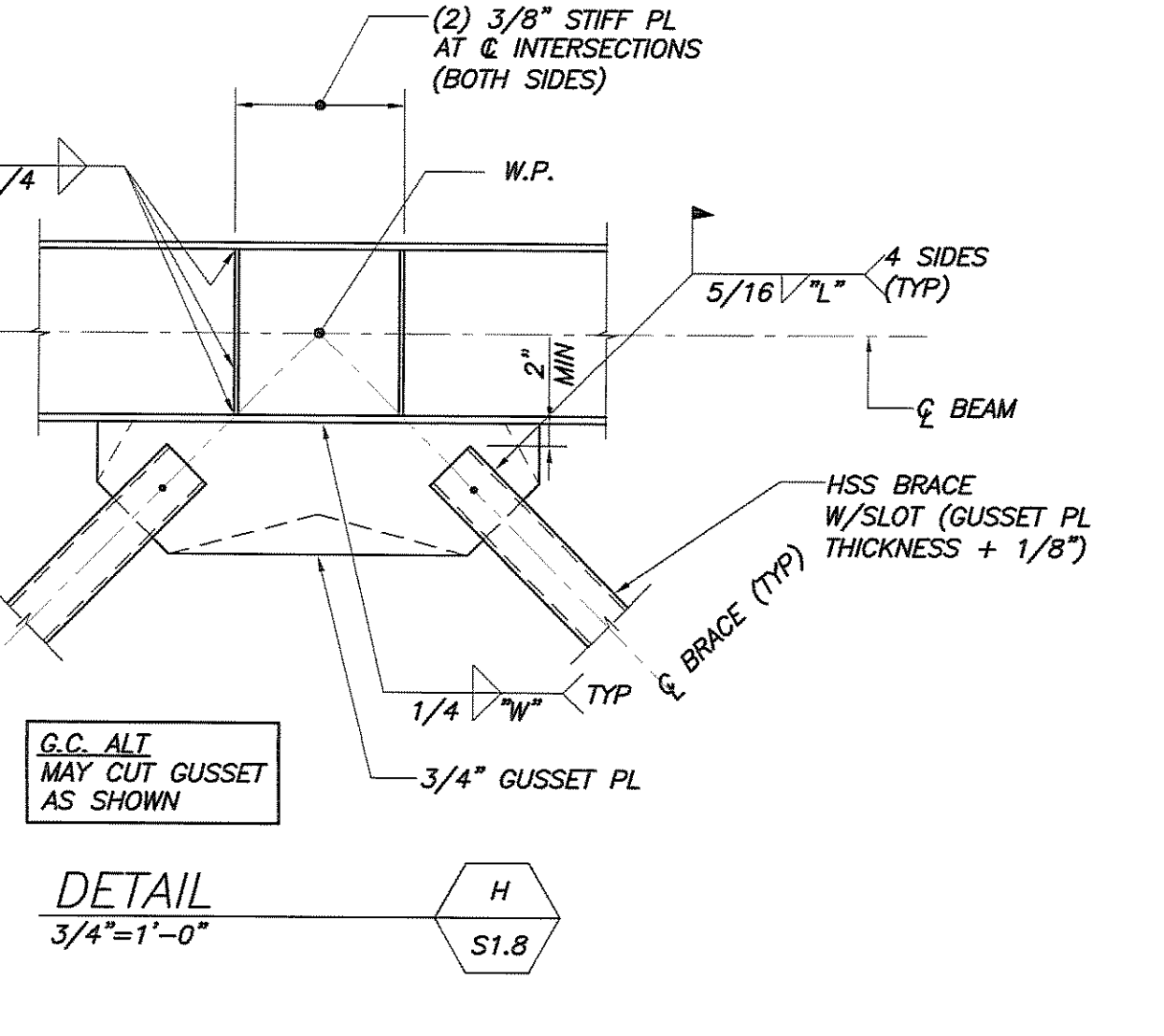
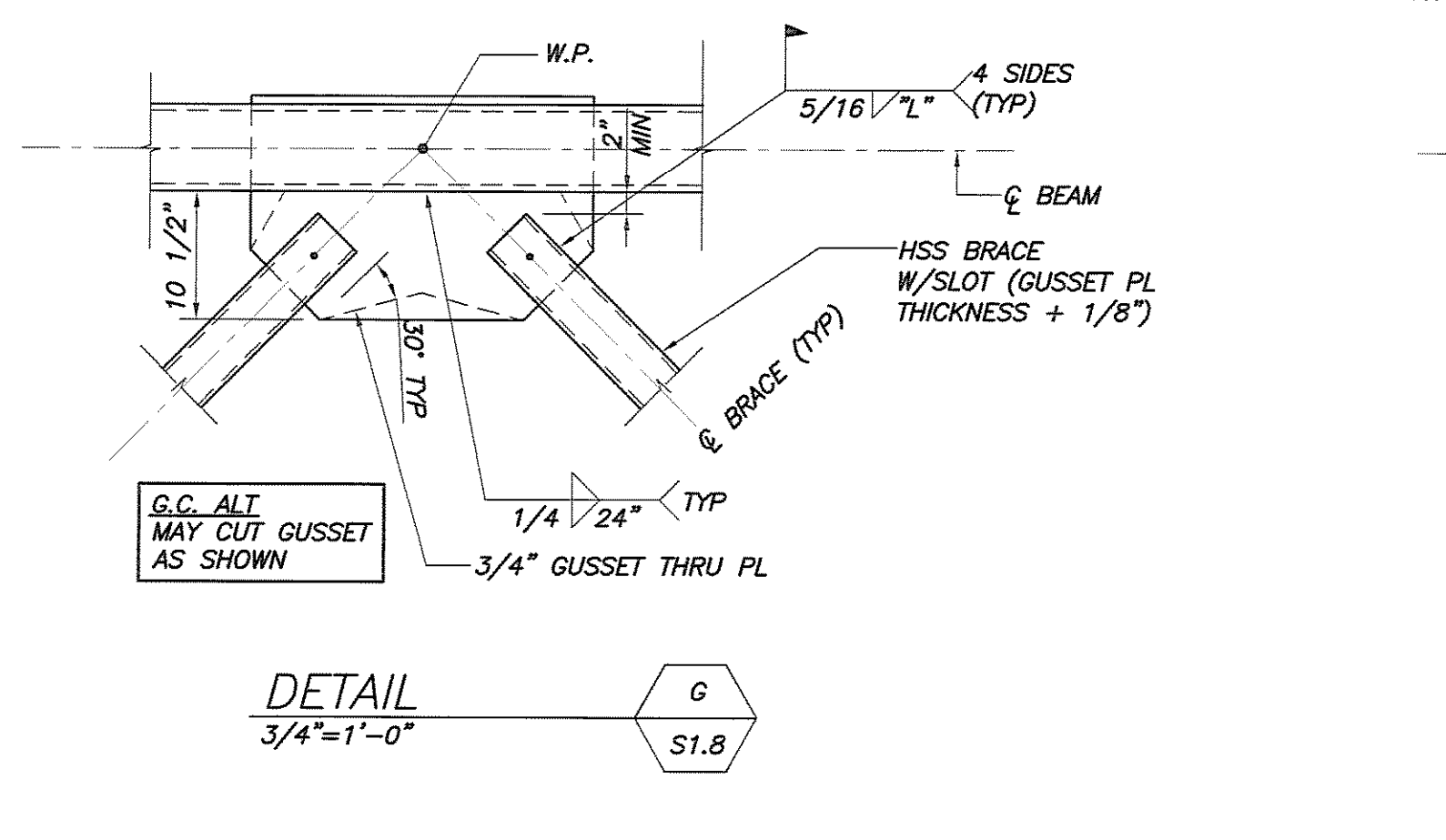
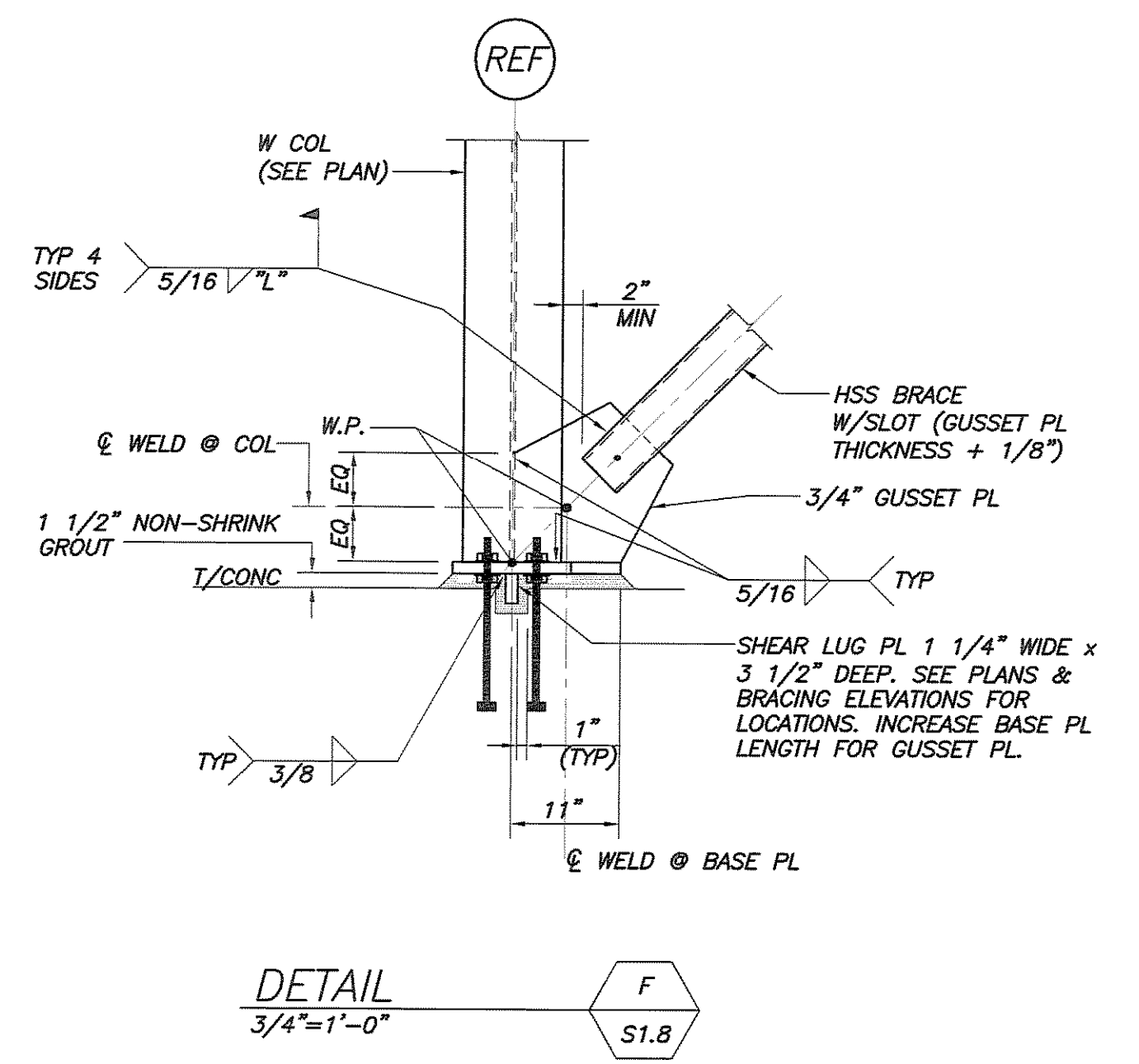
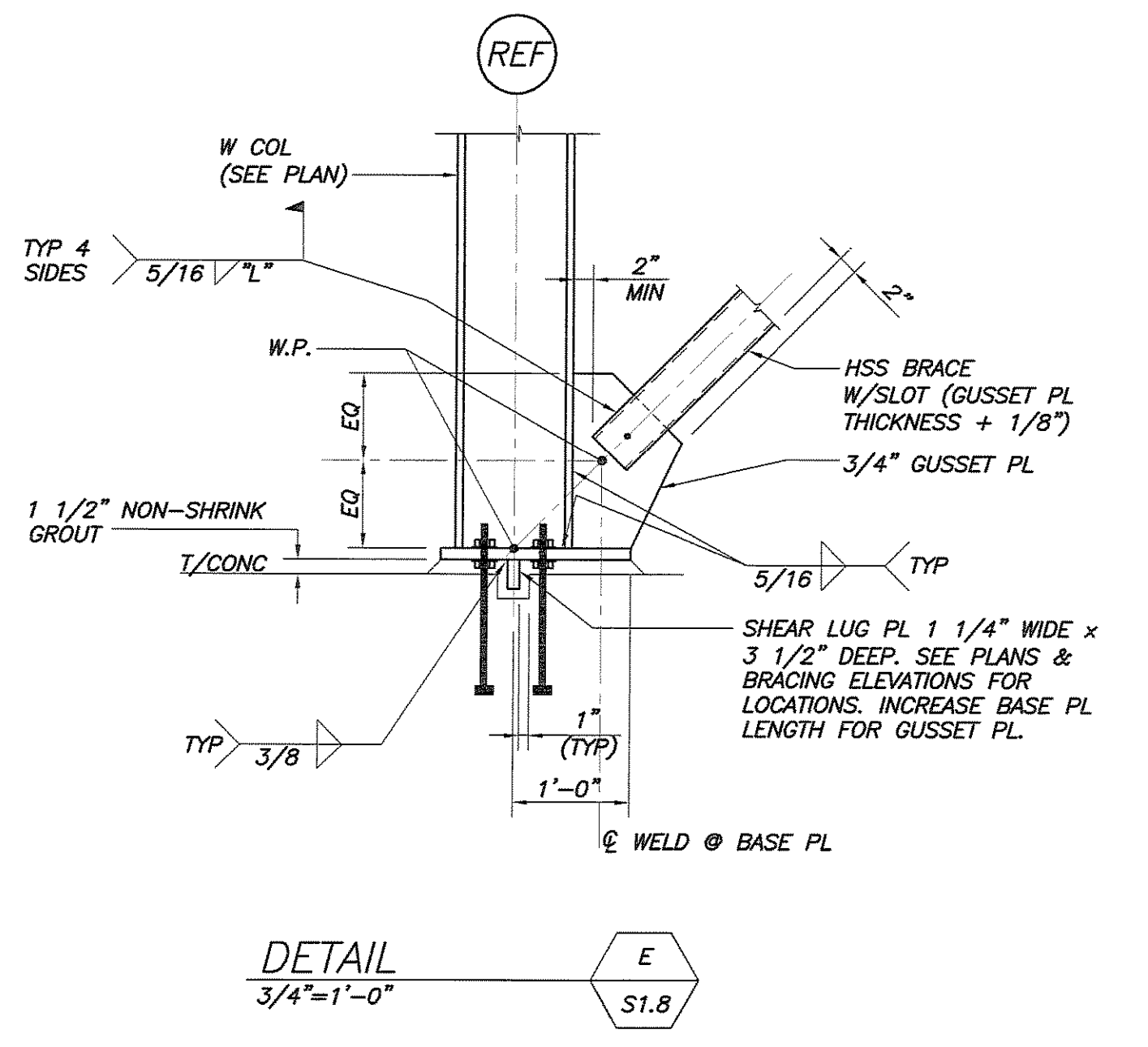
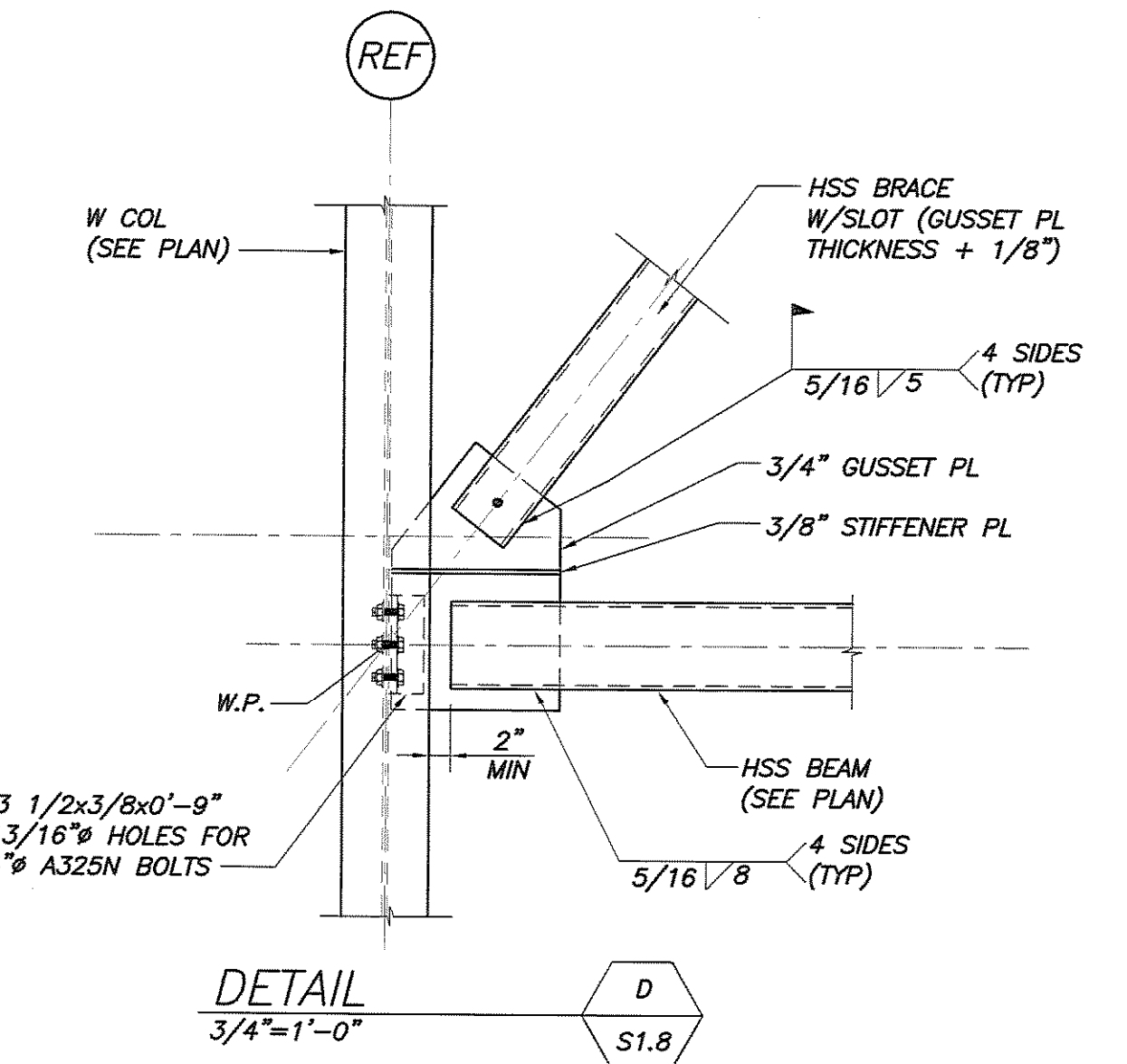
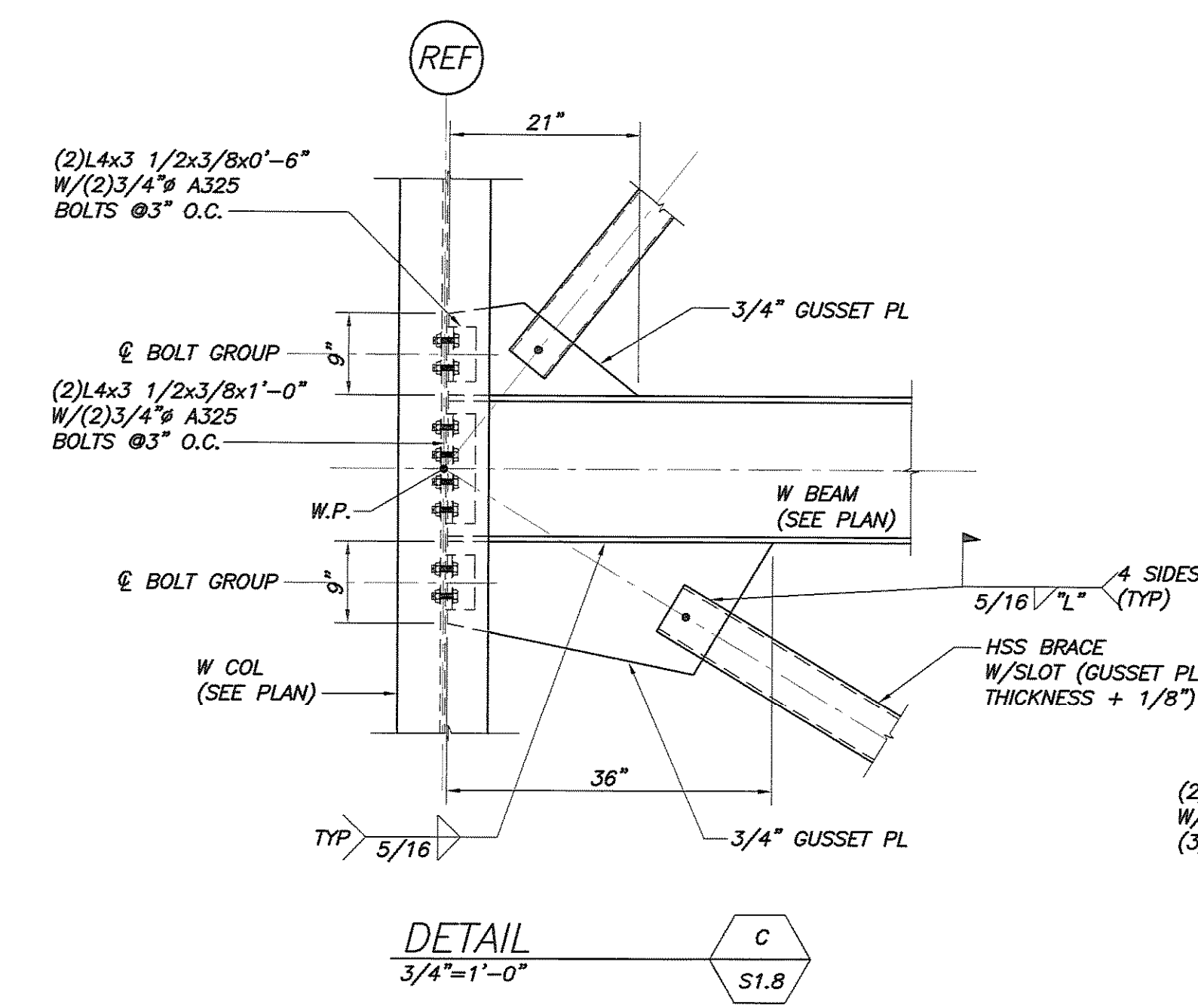
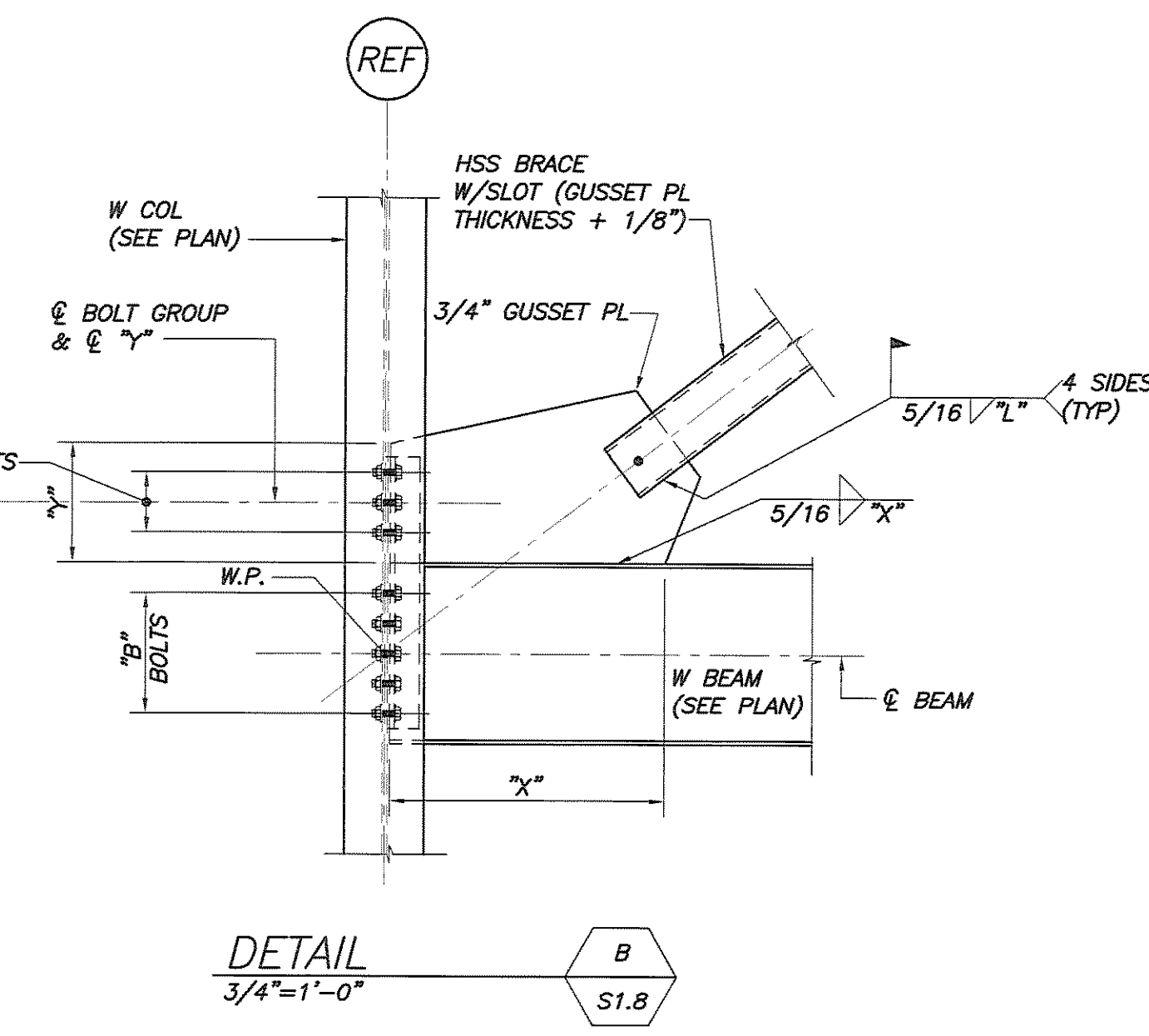
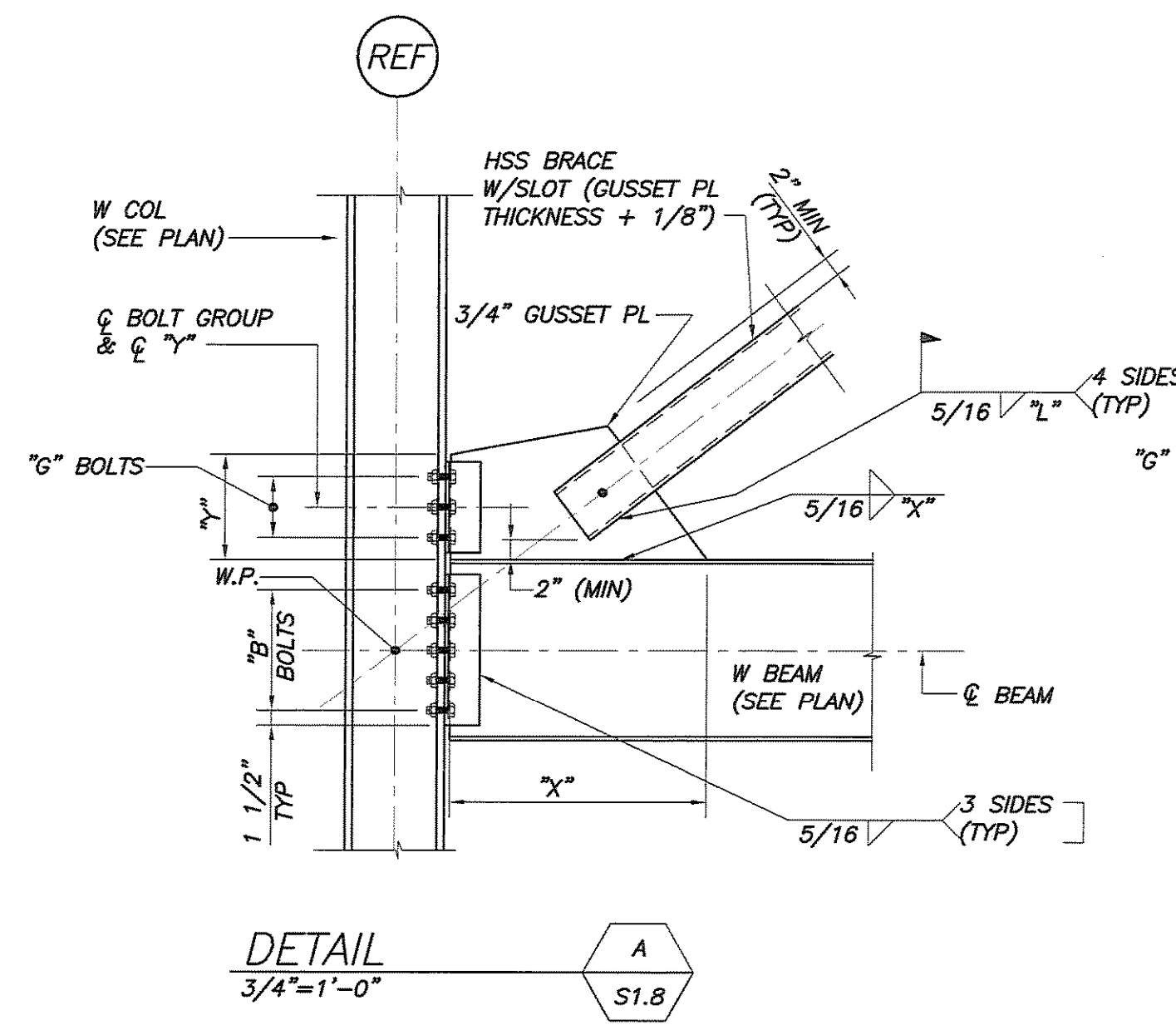


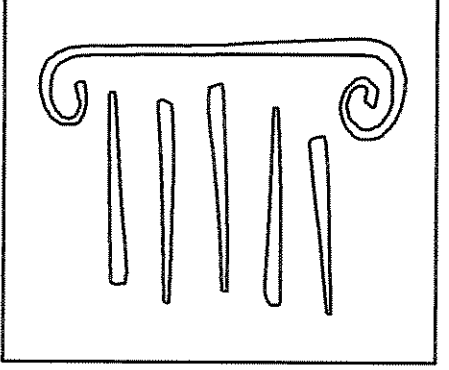
IF THIS SHEET IS NOT 24 X 36 IT IS A REDUCED SCALE PRINT - SCALE ACCORDINGLY



BRACE CONNECTION INFORMATION SCHEDULE

BRACE TYPE	GUSSET	GUSSET				BRACE		G - BOLTS		B - BOLTS		ANGLE TYPE
		W (in)	X (in)	Y (in)	Z (in)	L (in)	#	S (in)	#	S (in)		
BF-1	HSS5x5x1/4	30	17	10 1/4	10 1/4	5	2	3	4	3	L4x3 1/2x3/8 LLBB	
BF-2	HSS6x6x3/8	56	38	9	12 1/2	6	2	3	7 ⁰⁰	3	L4x3 1/2x3/8 LLBB	
BF-3	HSS6x6x3/8	56	40	9	12	6	2	3	7	3	L4x3 1/2x3/8 LLBB	
BF-4	HSS6x6x3/8	-	26 ⁰⁰	9	-	6	2	3	4 ⁰⁰	3	L4x3 1/2x1/2 LLBB	
	HSS5x5x1/4	-	26 ⁰⁰	9	-	5	2	3	5 ⁰⁰	3	L4x3 1/2x3/8 LLBB	
BF-5	HSS6x6x3/8	-	24 ⁰⁰	9	-	6	2	3	4 ⁰⁰	3	L4x3 1/2x1/2 LLBB	
	HSS5x5x1/4	-	22 1/2 ⁰⁰	9	-	5	2	3	5 ⁰⁰	3	L4x3 1/2x3/8 LLBB	
BF-6	HSS5x5x1/4	38	21 ⁰⁰	10 1/2	10 1/2	5	2	3	4 ⁰⁰	3	L4x3 1/2x3/8 LLBB	
BF-7	HSS5x5x1/4	28	15 1/2	11 1/2	10	5	2	3	4	3	L4x3 1/2x3/8 LLBB	
BF-8	HSS5x5x1/4	32	20 ⁰⁰	10 1/2	10 1/2	5	2	3	4 ⁰⁰	3	L4x3 1/2x3/8 LLBB	

- (1) = (6) @W21 BEAM
- (2) = @W24 BEAM, X=34, H=15, B#7
- (3) = @W24, X=24, B#7
- (4) = @W18, X=21 1/2, B#5
- (5) = @W18, X=22, B#5



PORT CITY ARCHITECTURE

65 NEWBURY STREET
 PORTLAND, ME 04101
 207.761.9000
 fax: 207.761.2010
 lita@portcityarch.com

JACOBS CONSULTANCY
 GPR Laboratory Planning Practices

VANZELM ENGINEERS
 VANZELM BETWOOD & SHAFER, INC.

BECKER
 structural engineers, inc.

SYTDesign CONSULTANTS
 CIVIL ENGINEERING & LANDSCAPE ARCHITECTURE

ALLIED/COOK CONSTRUCTION

Favreau ELECTRIC

Titan Mechanical, Inc.
 Design-Build Engineering - Mechanical Contracting

UNIVERSITY OF NEW ENGLAND

COLLEGE OF PHARMACY

716 STEVENS AVENUE, PORTLAND, ME

#	DATE	DESCRIPTION
		BID SET
	02/08/08	Date Issued
	06506	Project Number

SHEET NAME
FRAMING SECTIONS & DETAILS

Drawn By
 APP

Checked By
 DSB

S3.4

BID SET - NOT FOR CONSTRUCTION