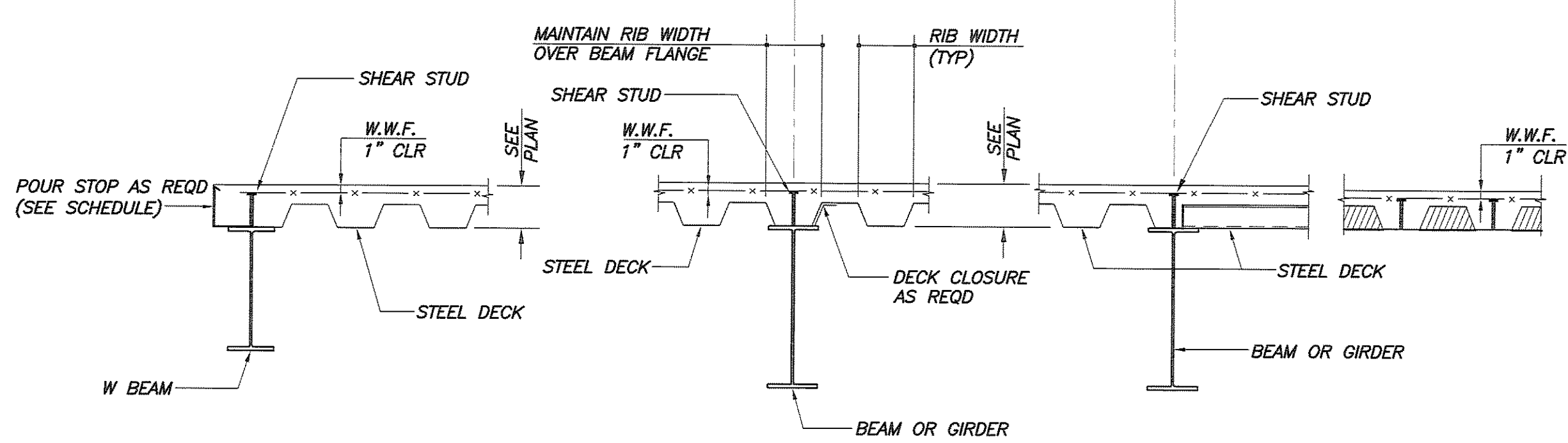
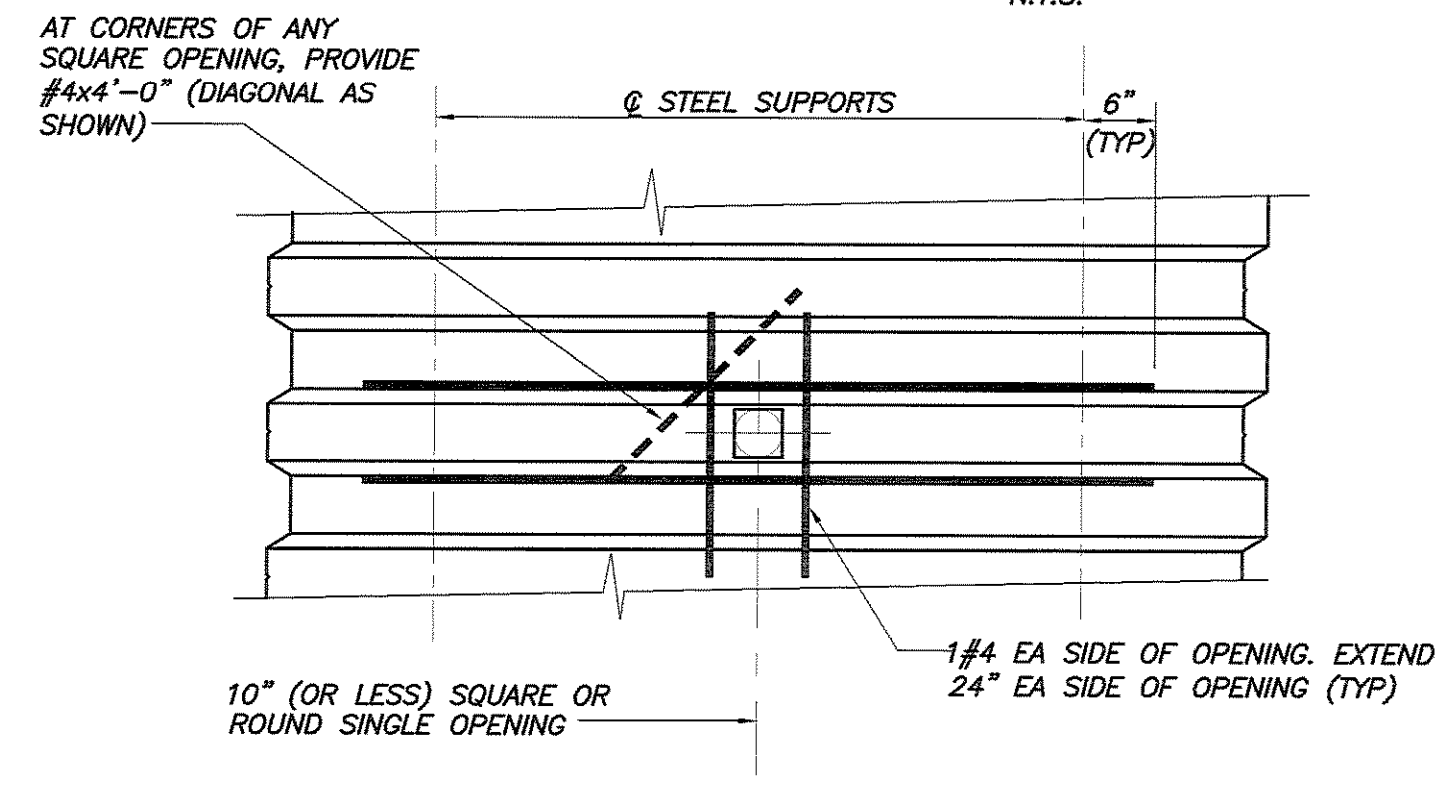


IF THIS SHEET IS NOT 24 X 36 IT IS A REDUCED SCALE PRINT - SCALE ACCORDINGLY

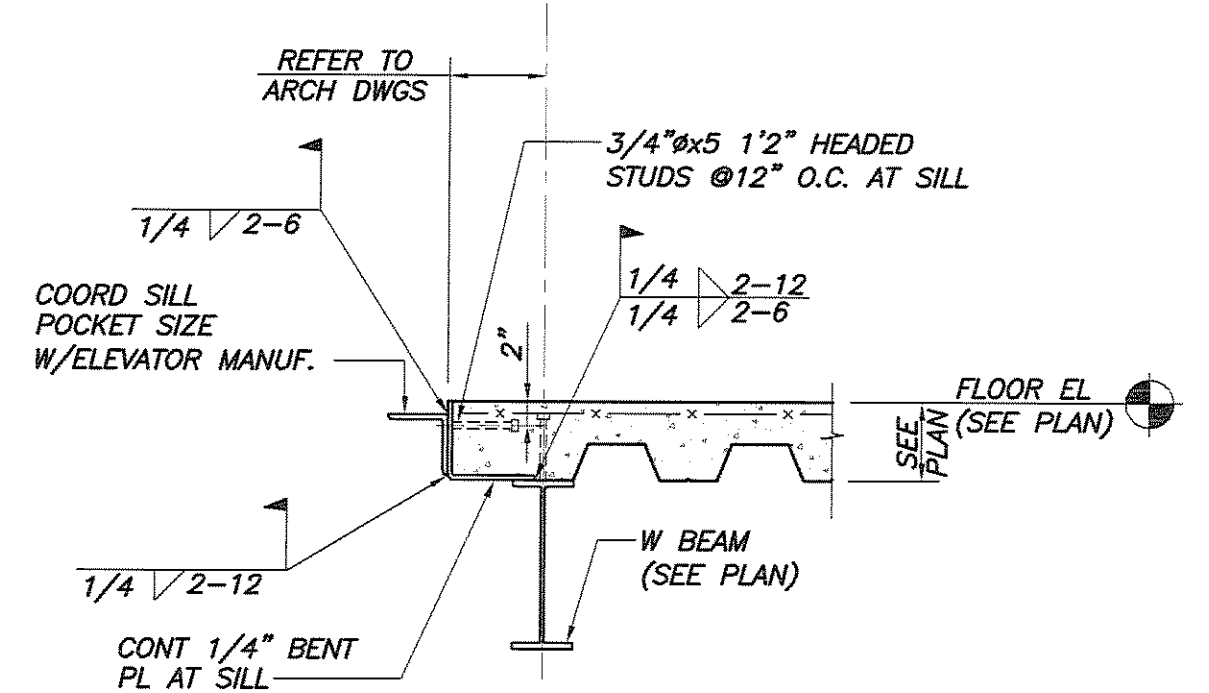


**TYP COMPOSITE DECK DETAILS**  
N.T.S.

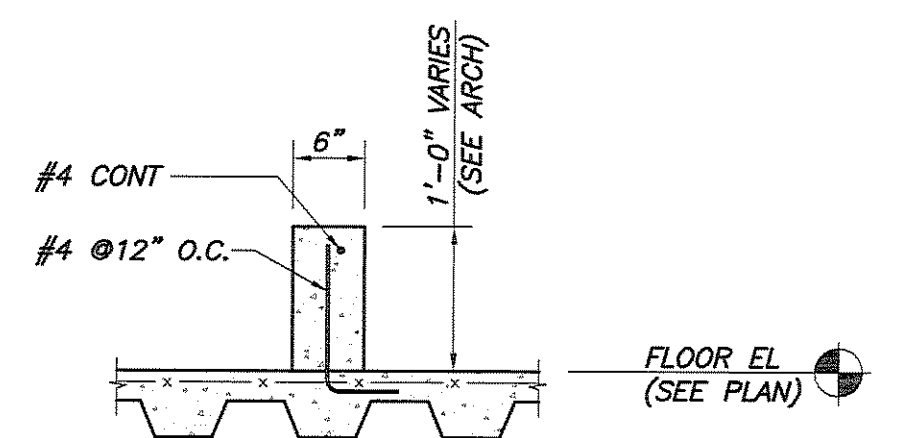


**PLAN OF TYP OPENING IN COMPOSITE FLOOR DECK**  
N.T.S.

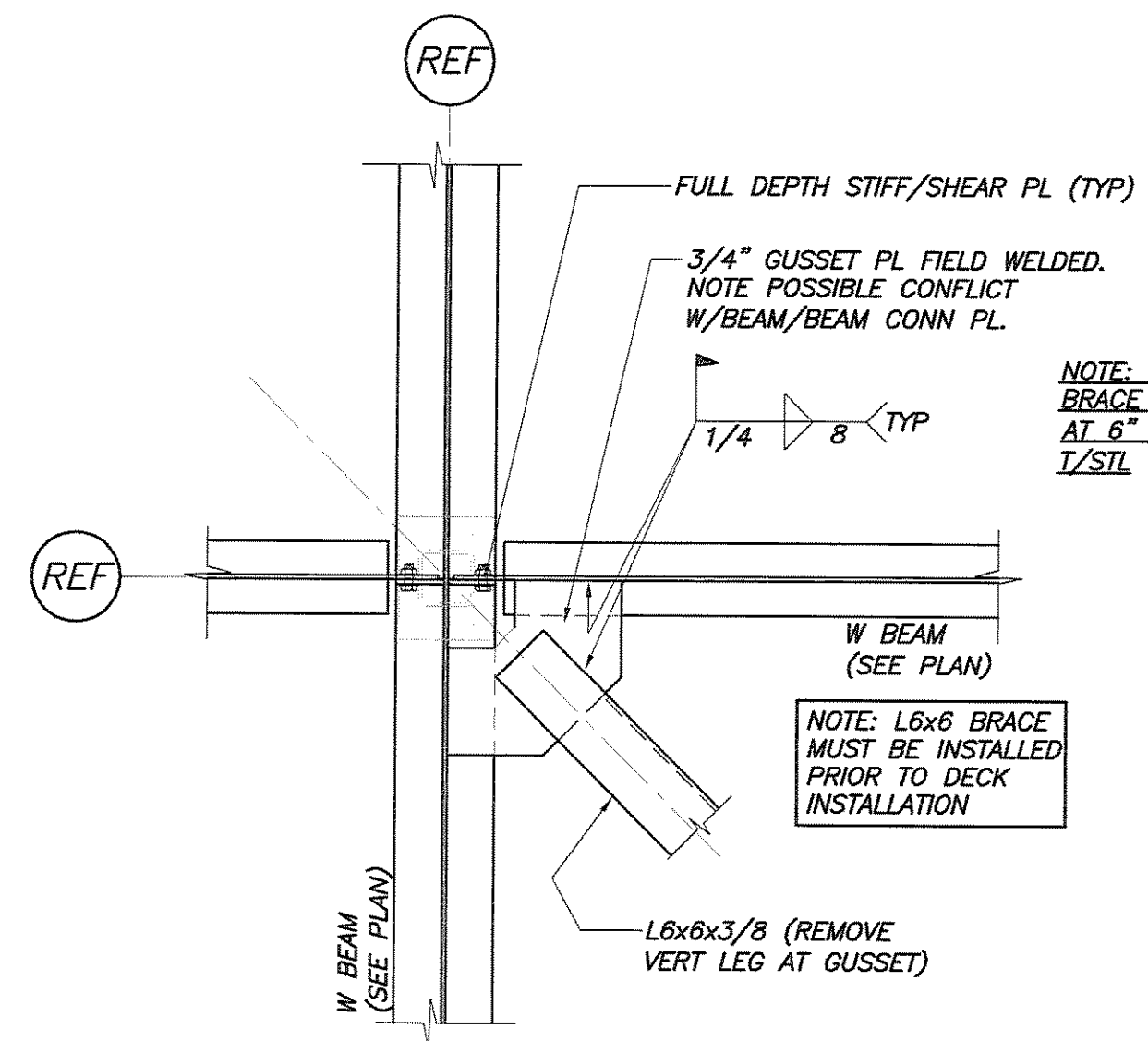
OVERHANG	POUR STOP GAGE
<3"	14 GA
3"-6"	12 GA
7"-9"	10 GA
>9"	SEE SECTIONS & DETAILS



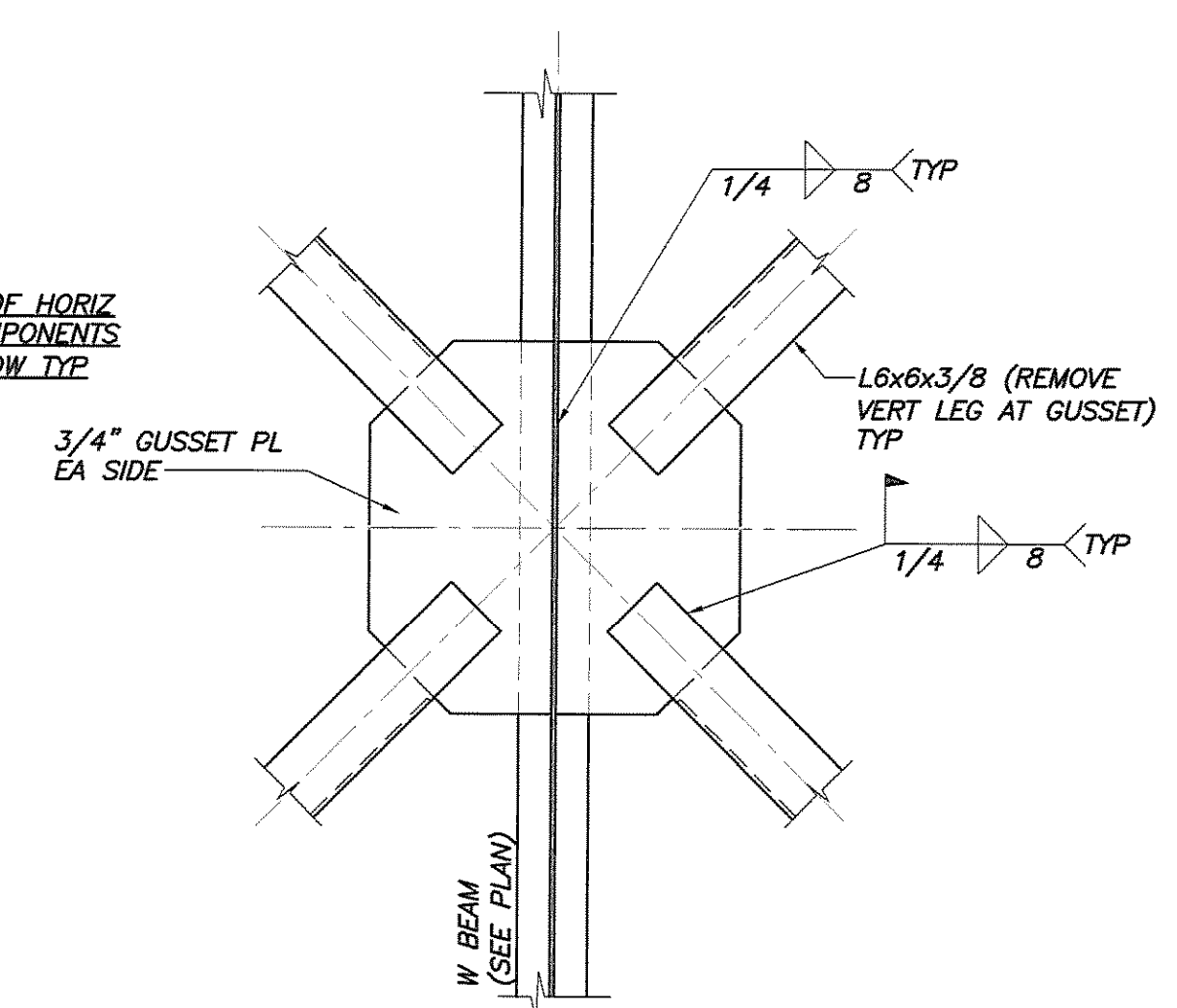
**TYP ELEVATOR SILL DETAIL, U.N.O.**  
N.T.S.



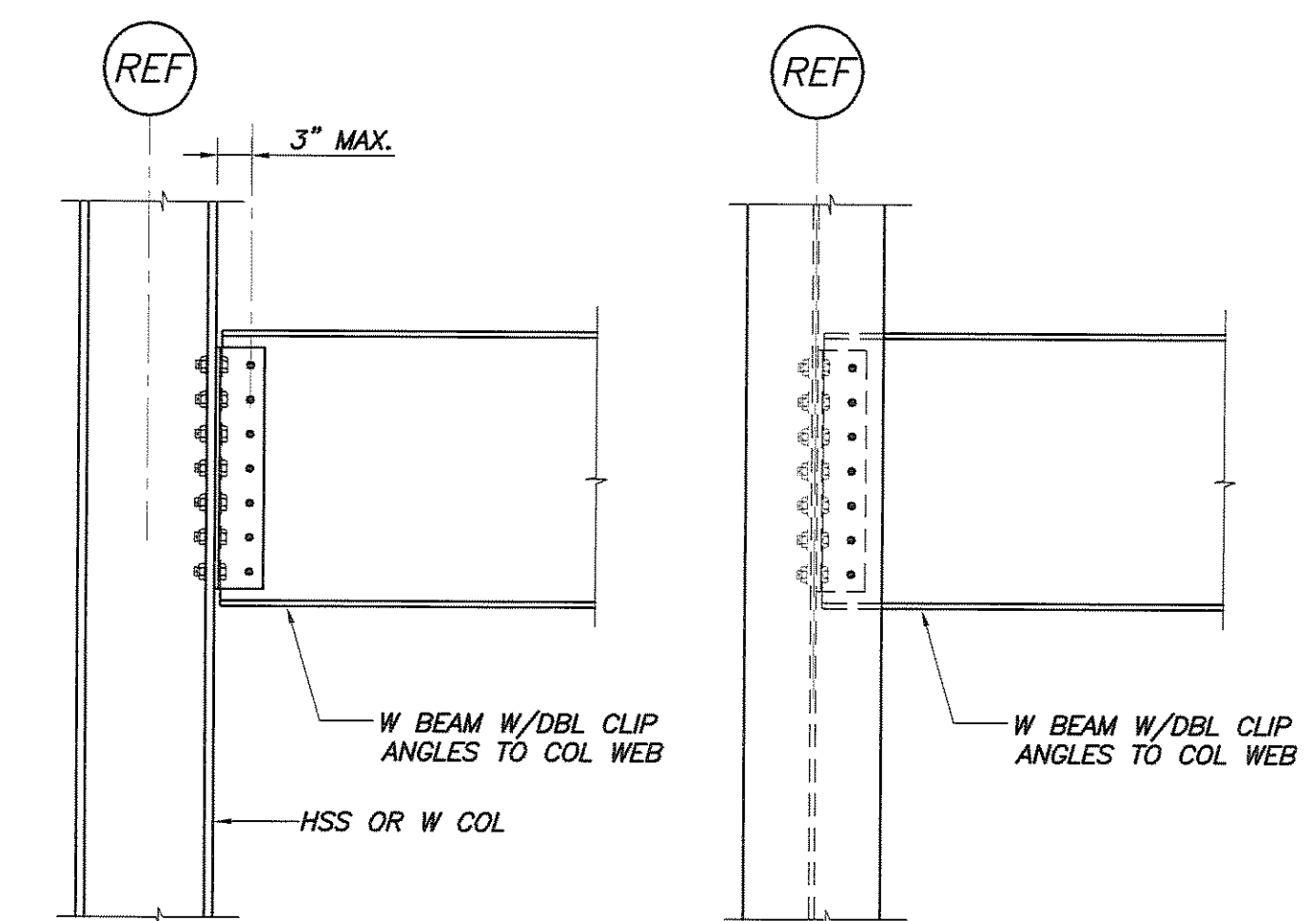
**TYP CONCRETE CURB AT MECH MEZZ, U.N.O.**  
N.T.S.



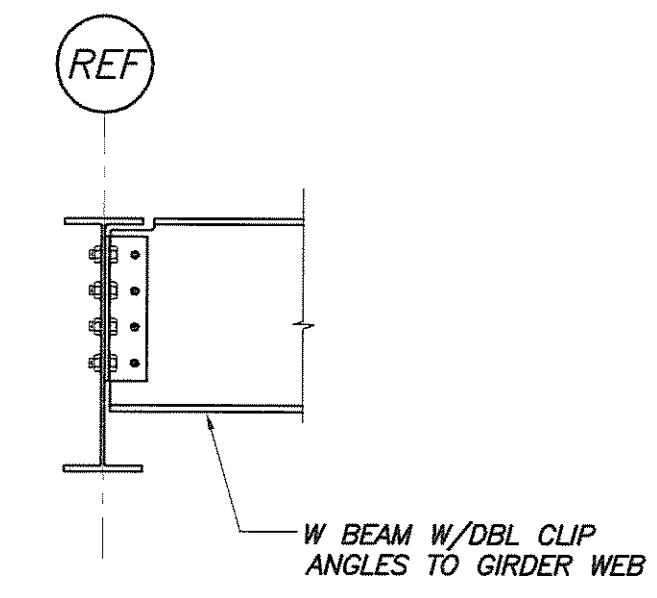
**DETAIL A**  
3/4"=1'-0"



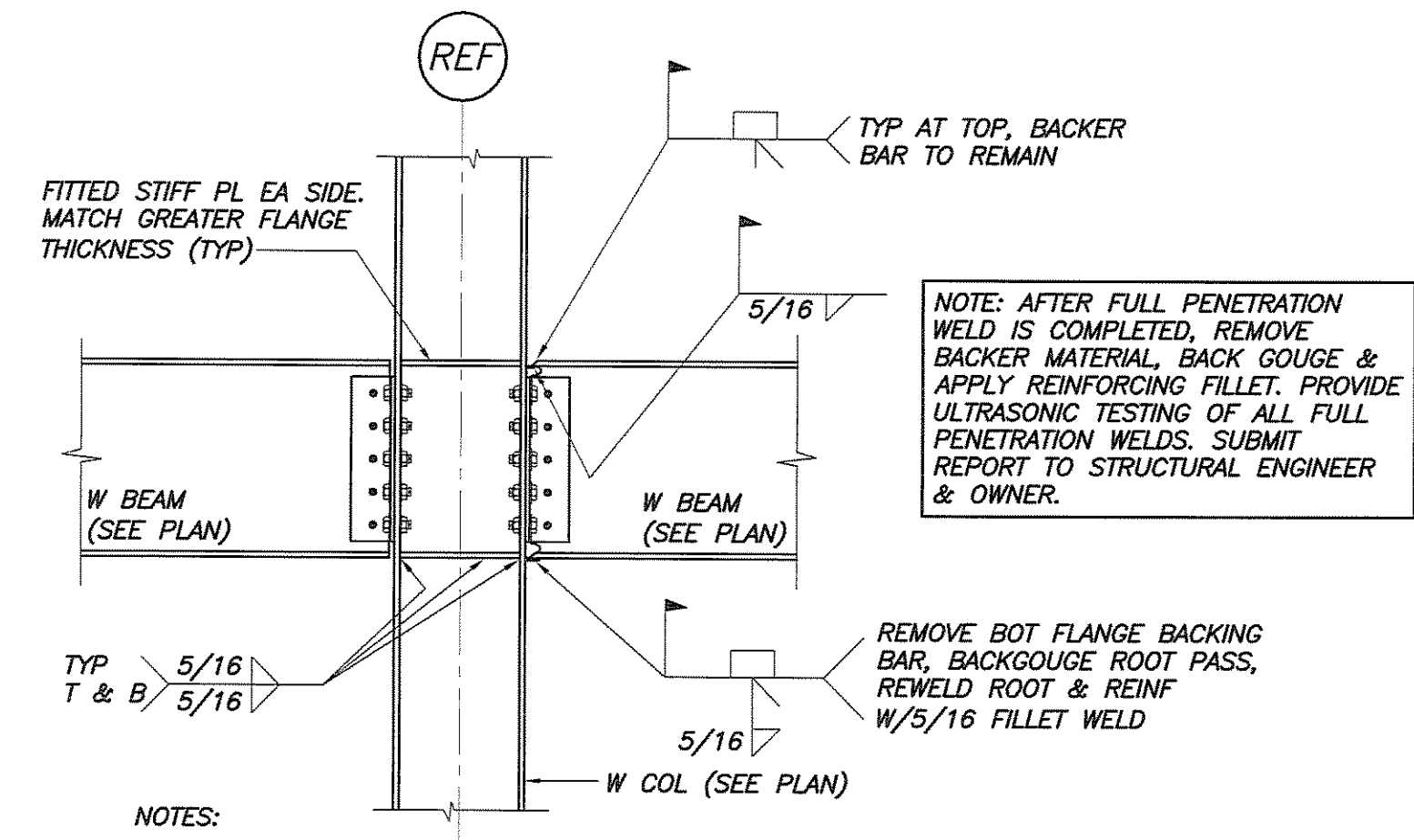
**DETAIL B**  
3/4"=1'-0"



**TYP BEAM/COL CONN DETAILS**  
N.T.S.



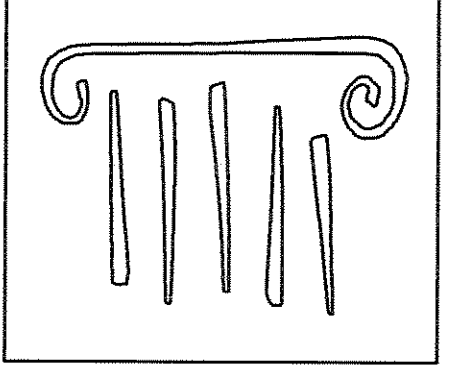
**TYP BEAM/BEAM CONN DETAIL**  
N.T.S.



**TYP MOMENT CONN DETAIL U.N.O.**  
N.T.S.

SIMPLE SHEAR BEAM CONN. SCHEDULE			
BEAM SIZE	DESIGN REACTION	MINIMUM NO BOLTS 1 SIDED CONNECTION	MINIMUM NO BOLTS 2 SIDED CONNECTION
W8	11k	2	2
W12	16k	3	2
W14	20k	3	2
W16	25k	4	3
W18	30k	5	3
W21	35k	5	4
W24	55k	6	4

- SIMPLE SHEAR CONNECTIONS NOTES:**
- SIMPLE SHEAR CONNECTIONS SHALL BE SELECTED FROM THE AISC "MANUAL OF STEEL CONSTRUCTION - ALLOWABLE STRESS DESIGN, NINTH EDITION" USING THE ABOVE REFERENCED REACTIONS AND CRITERIA. REACTIONS INDICATED ARE UNFACTORED. MORE BOLTS THAN REFERENCED IN THE "MINIMUM" SECTIONS ABOVE MAY BE REQUIRED FOR LOAD REQUIREMENTS.
  - CONNECTIONS ARE SUBJECT TO REVIEW ON THE STEEL SHOP DRAWINGS.
  - ALL BOLTS SHALL BE A325 OR A490 FOR SIMPLE SHEAR CONNECTIONS, MIN 3/4". MINIMUM WELD SIZE SHALL BE 5/16". MINIMUM MATERIAL SIZE FOR PLATES OR ANGLES SHALL BE 3/8"
  - ONE SIDED CONNECTIONS INCLUDE SINGLE PLATES AND SINGLE ANGLE CONNECTIONS.
  - TWO SIDED CONNECTIONS INCLUDE DOUBLE ANGLE AND END PLATE CONNECTIONS.



**PORT CITY ARCHITECTURE**

65 NEWBURY STREET  
PORTLAND, ME 04101  
207.761.9000  
fax: 207.761.2010  
lita@portcityarch.com

**JACOBS CONSULTANCY**  
OPK Laboratory Planning Precision

**VANZELM ENGINEERS**  
VANZELM HEYWOOD & SHADFORD, INC.

**BECKER**  
structural engineers, inc.

**SYTDesign CONSULTANTS**  
CIVIL ENGINEERING & LANDSCAPE ARCHITECTURE

**ALLIED/COOK CONSTRUCTION**

**Favreau ELECTRIC**

**Titan Mechanical, Inc.**  
Design-Build Engineering - Mechanical Contractors

UNIVERSITY OF NEW ENGLAND

**COLLEGE OF PHARMACY**

716 STEVENS AVENUE, PORTLAND, ME

#	DATE	DESCRIPTION
		BID SET
	02/08/08	Date Issued
	06506	Project Number

SHEET NAME  
**FRAMING SECTIONS & DETAILS**

Drawn By  
APP  
Checked By  
DSB

**S3.1**

**BID SET - NOT FOR CONSTRUCTION**