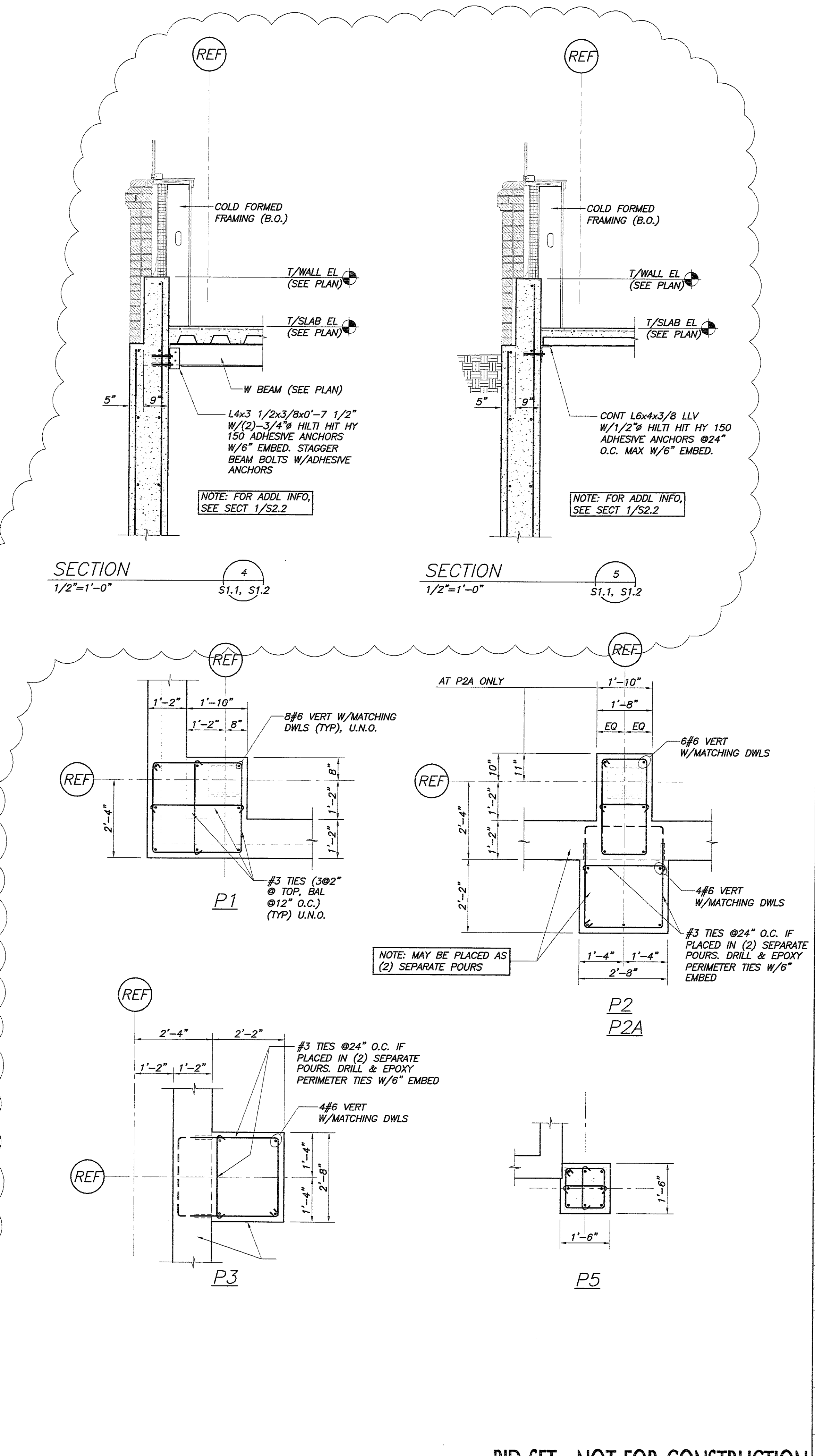
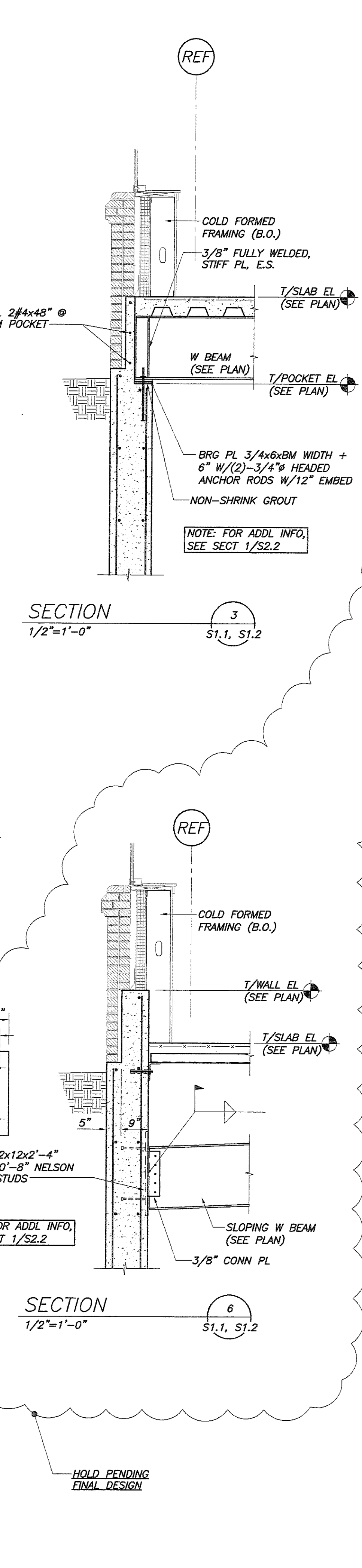
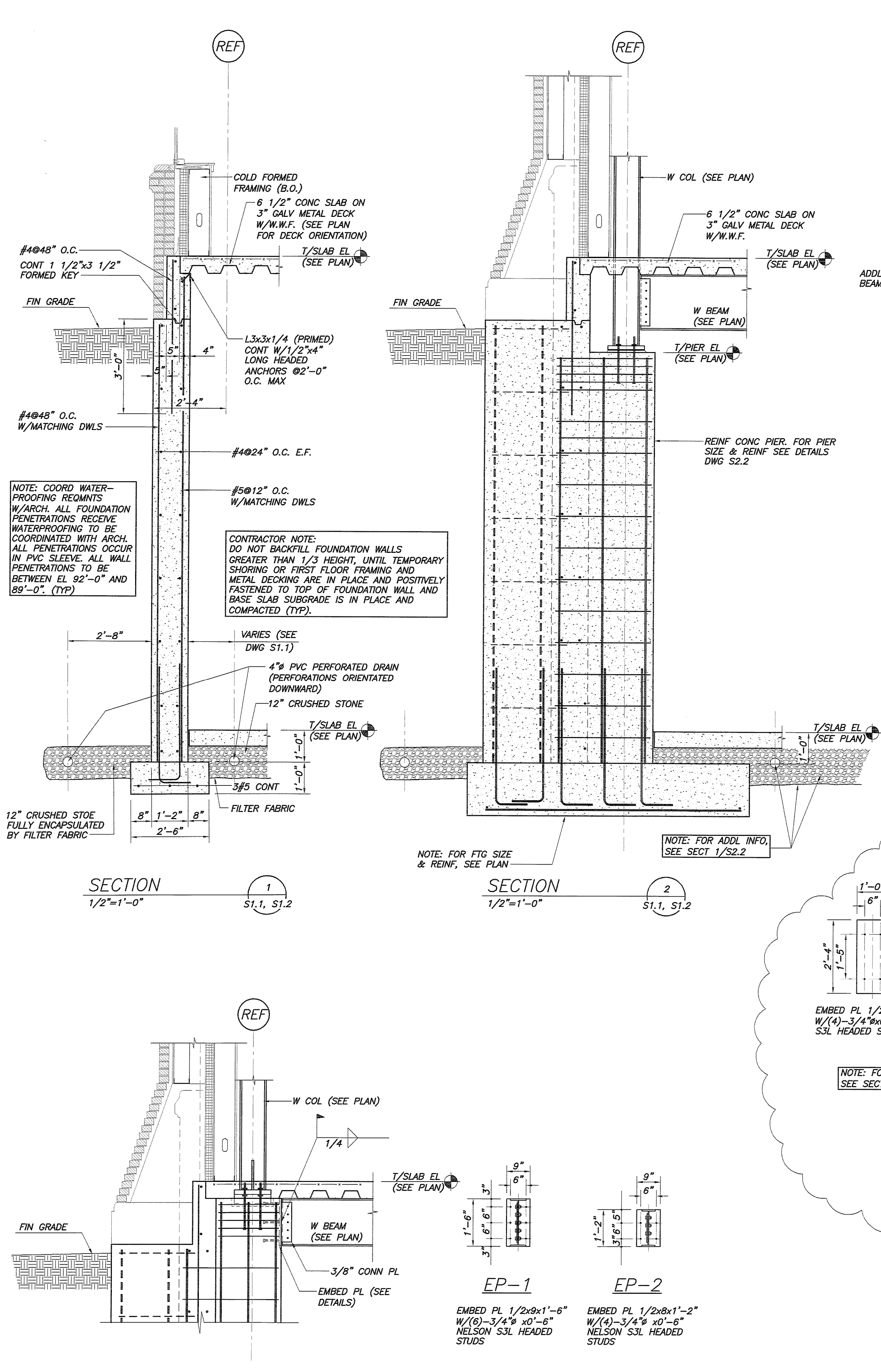
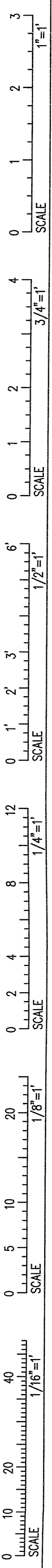


IF THIS SHEET IS NOT 24 X 36 IT IS A REDUCED SCALE PRINT - SCALE ACCORDINGLY



PORT CITY ARCHITECTURE
65 NEWBURY STREET
PORTLAND, ME 04101
207.761.9000
fax: 207.761.2010
lita@portcityarch.com

JACOBS CONSULTANCY
GPR Laboratory Planning Practice

VANZELM ENGINEERS
VANZELM, REYWOOD & SHAFER, INC.

BECKER
Structural Engineers, Inc.

SYTDesign CONSULTANTS
CIVIL ENGINEERING & LANDSCAPE ARCHITECTURE

ALLIED/COOK CONSTRUCTION

Fareau ELECTRIC

Titan Mechanical, Inc.
Design Engineering - Mechanical Contracting

UNIVERSITY OF NEW ENGLAND COLLEGE OF PHARMACY
716 STEVENS AVENUE, PORTLAND, ME

#	DATE	DESCRIPTION
		BID SET
	02/08/08	Date issued
	06506	Project Number

SHEET NAME
CONCRETE SECTIONS

Drawn By
APP

Checked By
DSB

BID SET - NOT FOR CONSTRUCTION

S2.2

COPYRIGHT: Reuse or reproduction of the contents of this document is not permitted without written permission of PORT CITY ARCHITECTURE PA