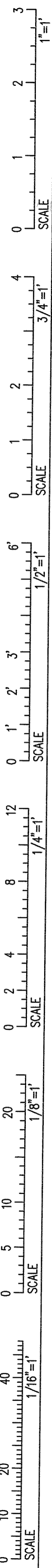


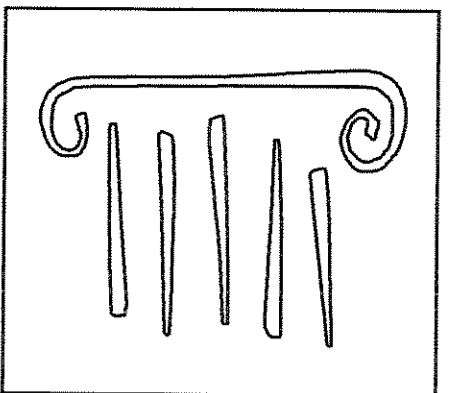
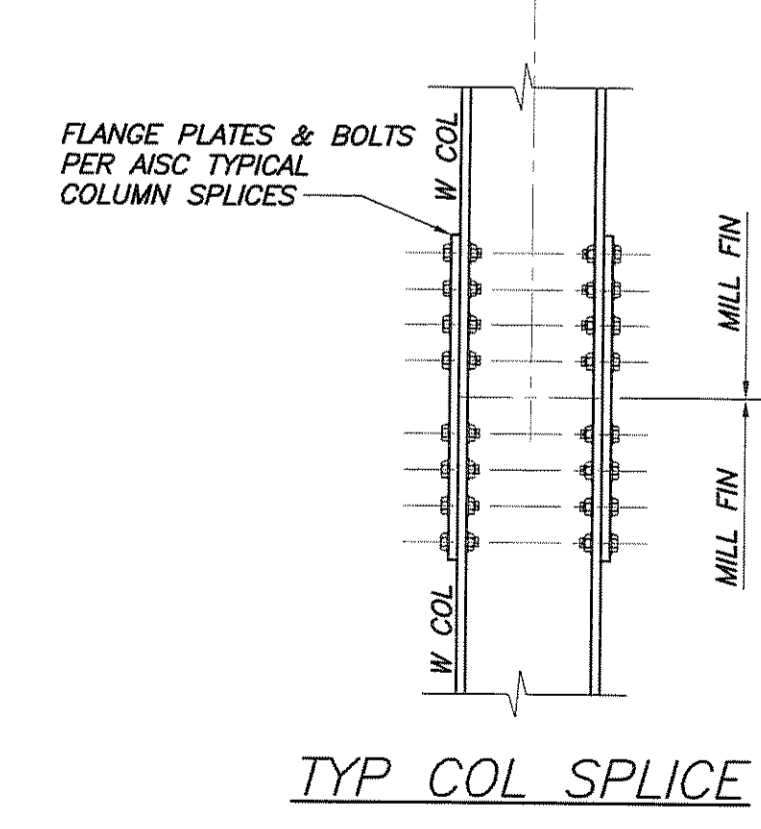
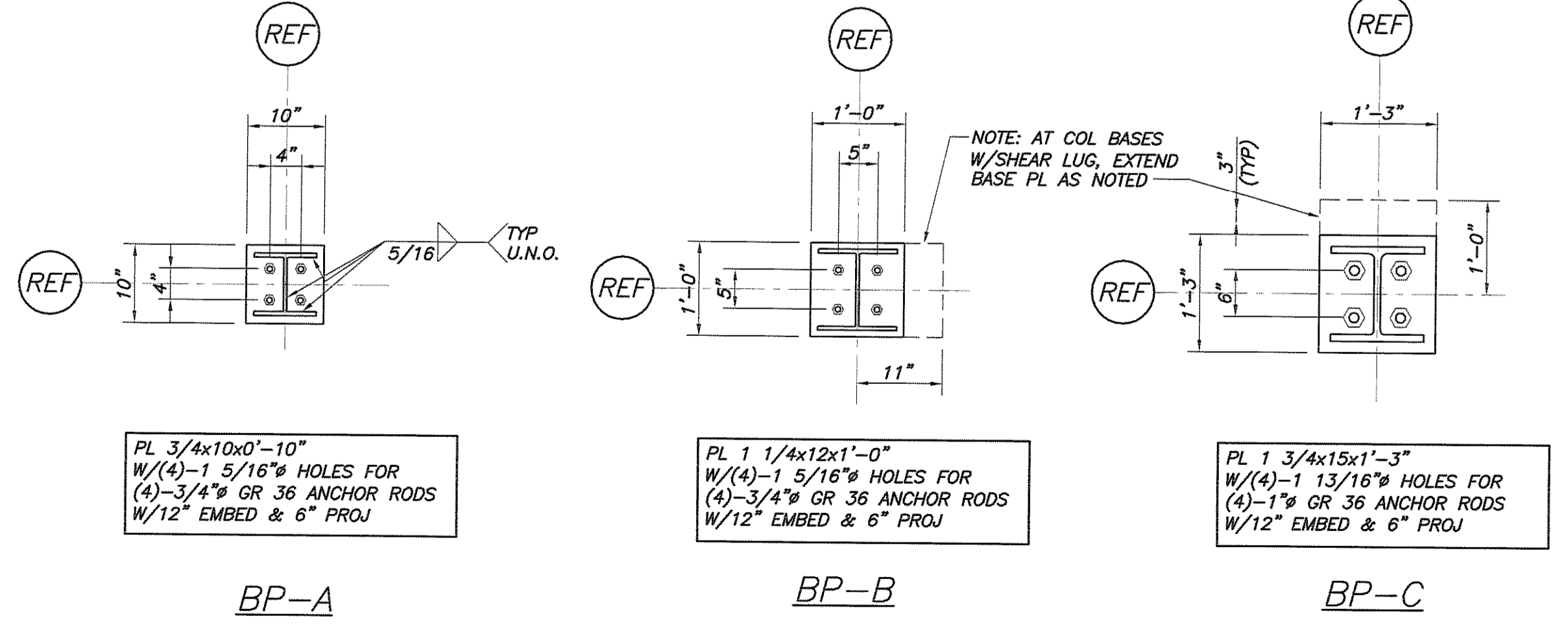
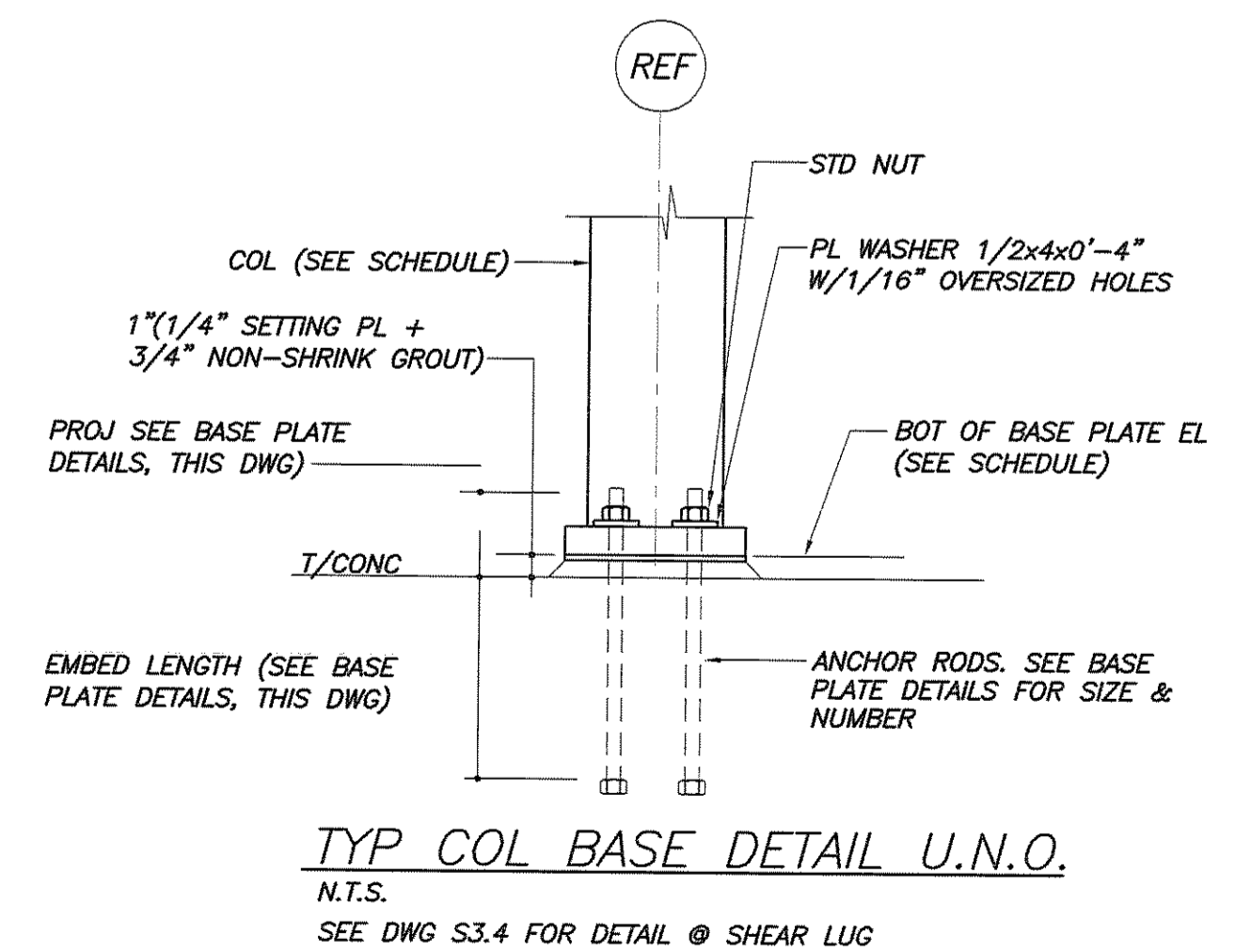
IF THIS SHEET IS NOT 24 X 36 IT IS A REDUCED SCALE PRINT - SCALE ACCORDINGLY



STEEL COLUMN SCHEDULE

COLUMN MARK	G-4	G-3	G-2	G-1	F-4	F-3	F-2	F-1	E-4	E-3	E-2	E-1	D-4	D-3	D-2.4	D-1	C.7-1.9	C.7-1.3	C-4	C-3	C-2.4	C-1	B-4	B-3	B-2.4	B.2-1.9	B.2-1.3	B-1	A-4	A-3.6	A-3	A-2	A-1	
ROOF																																		
ATTIC																																		
THIRD FLR	W10x33	W10x33	W10x33	W10x33	W10x39	W12x65	W12x65	W10x39	W10x39	W12x65	W12x65	W10x39	W10x33	W12x72		W10x60			W10x33	W12x72		W10x49	W10x33	W12x72			W10x49	W10x33	W10x33	W10x33	W10x33	W10x33		
SECOND FLR	W10x33	W10x33	W10x33	W10x33	W10x39	W12x65	W12x65	W10x39	W10x39	W12x65	W12x65	W10x39	W10x33	W12x72	4'-0" (TYP)	W10x60			W10x33	W12x72		W10x49	W10x33	W12x72			W10x49	W10x33	W10x33	W10x33	W10x33	W10x33		
FIRST FLR	W10x33	S.L.	S.L.	W10x33	W10x39	W12x65	W12x65	W10x39	W10x39	W12x65	W12x65	W10x39	W10x33	W12x72	W10x54	W10x60	WBx37	WBx37	W10x33	W12x72	W10x54	W10x49	W10x33	W12x72	W10x54	WBx37	WBx37	W10x49	W10x33	W10x33	W10x33	W10x33		
LOWER LEVEL																																		
BOT OF STEEL COLUMN BASE PL ELEVATION U.N.O.	89'-3"	89'-9"	89'-9"	89'-3"	87'-4"	84'-1"	84'-1"	89'-8"	87'-4"	83'-1 1/2"	83'-7"	89'-8"	87'-4"	83'-7"	84'-1"	87'-1"	84'-1"	84'-1"	87'-1"	83'-7"	84'-1"	88'-1"	88'-9"	84'-1 1/2"	84'-1"	84'-1"	84'-1"	88'-3"	89'-3"	89'-8"	89'-8"	87'-9"	87'-9"	
BASE PL TYPE	BP-B	BP-B	BP-B	BP-B	BP-B	BP-C	BP-C	BP-B	BP-B	BP-C	BP-C	BP-B	BP-B	BP-C	BP-B	BP-B	BP-A	BP-A	BP-B	BP-C	BP-B	BP-B	BP-B	BP-C	BP-B	BP-B	BP-A	BP-A	BP-B	BP-B	BP-B	BP-B	BP-B	

NOTES:
 1. S.L. INDICATES SHEAR LUG.
 2. SEE PLANS FOR ADDL. COLUMNS.



PORT CITY ARCHITECTURE

65 NEWBURY STREET
 PORTLAND, ME 04101
 207.761.9000
 fax: 207.761.2010
 lita@portcityarch.com

JACOBS CONSULTANCY
 GPR Laboratory Planning Practice

VANZELM ENGINEERS
 VANZELM HEYWOOD & STRALFORD, INC.

BECKER structural engineers, inc.

SYTDesign CONSULTANTS
 CIVIL ENGINEERING & LANDSCAPE ARCHITECTURE

ALLIED/COOK CONSTRUCTION

Fabrean ELECTRIC

Titan Mechanical, Inc.
 Design/Build Engineering - Mechanical Contracting

UNIVERSITY OF NEW ENGLAND

COLLEGE OF PHARMACY

716 STEVENS AVENUE, PORTLAND, ME

#	DATE	DESCRIPTION
		BID SET
	02/08/08	Date Issued
	06506	Project Number

SHEET NAME
 COLUMN SCHEDULE

Drawn By
 APP
 Checked By
 DSB

S1.7

BID SET - NOT FOR CONSTRUCTION