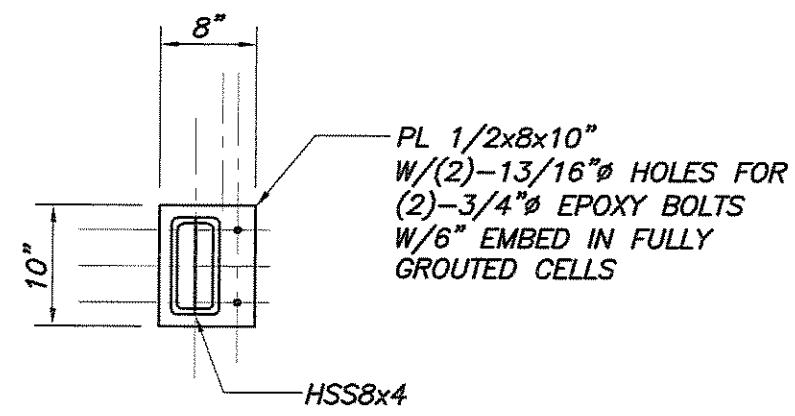
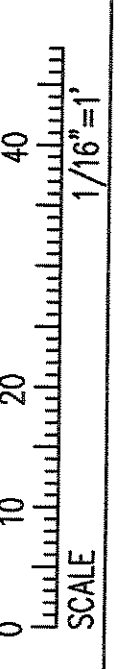
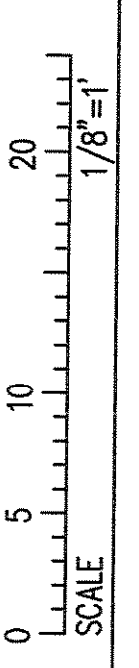
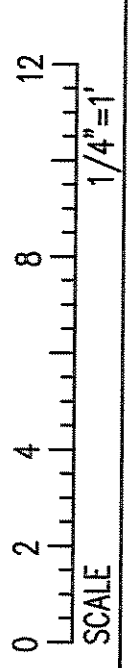
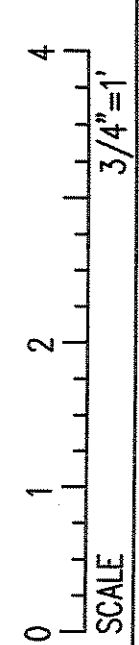
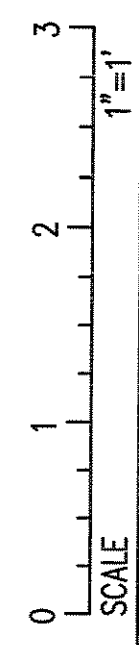
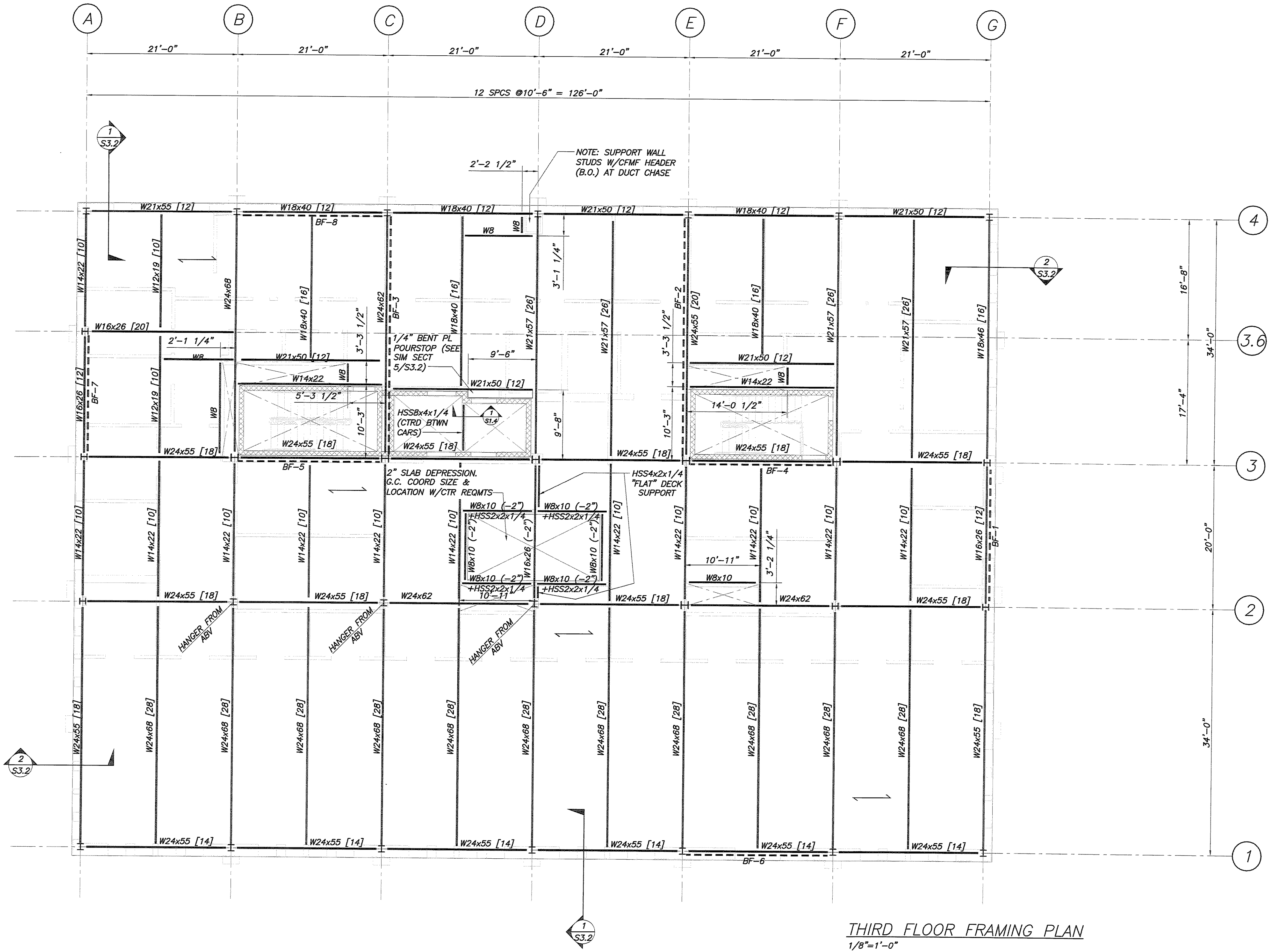


IF THIS SHEET IS NOT 24 X 36 IT IS A REDUCED SCALE PRINT - SCALE ACCORDINGLY



SECTION 1
3/4"=1'-0"
S1.2-S1.4



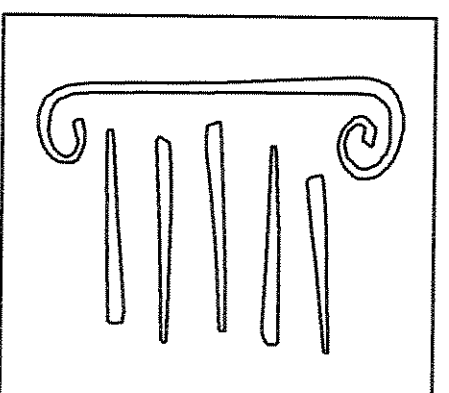
NOTE: ALL STAIR STRUCTURES SHALL BE DESIGNED BY THE STRUCTURAL STEEL FABRICATOR IN ACCORDANCE WITH THE 2006 INTERNATIONAL BUILDING CODE (IBC). STAIRS AND LANDINGS SHALL BE DESIGNED FOR A 100 PSF LIVE LOAD. COORDINATE ALL DETAILS WITH ARCHITECTURAL DRAWINGS AND SUBMIT FABRICATION DRAWINGS FOR REVIEW. DESIGN SHALL BE STAMPED BY PROFESSIONAL ENGINEER REGISTERED IN THE STATE OF MAINE.

THIRD FLOOR FRAMING PLAN
1/8"=1'-0"

- NOTES:
- INDICATES DIRECTION OF 6 1/2" NORMAL WEIGHT CONCRETE SLAB ON 3VL 18GA GALVANIZED METAL DECK (3 1/2" CONCRETE FILL OVER 3" DECK, 3 SPAN MIN), U.N.O. PROVIDE 6x6-W21xW21 W.W.F. TOP OF SLAB EL 126'-8" @ H.P. CONC THICKNESS IS MINIMUM. PROVIDE SUFFICIENT CONC TO ACCOUNT FOR STRUCTURE DEFLECTION. SEE SPECS.
 - TOP OF STEEL EL 126'-1 1/2" U.N.O.
 - [XX], ETC INDICATES 3/4"x5 1/2" LG HEADED SHEAR STUDS SPACED UNIFORMLY ALONG BEAM OR BTWN CONCENTRATED LOADS (U.N.O.).
 - C=1", ETC INDICATES THE AMOUNT OF POSITIVE CAMBER REQD AT MIDSPAN OF STRUCT MEMBER
 - BF-1 INDICATES BRACING. SEE BRACING ELEVATIONS DWG S1.8.
 - INDICATES MOMENT CONNECTION. SEE DETAILS.
 - REINFORCE CONC SLABS AROUND ALL FLOOR PENETRATIONS PER TYPICAL DETAILS DWG S3.1, U.N.O. COORD ALL OPENING SIZES & LOCATIONS W/ARCH & OTHER DISCIPLINES DWGS.
 - UNLESS NOTED OTHERWISE, BEAMS TO BE PLACED AT EQUAL SPACES BETWEEN COL LINES.
 - FOR COMPOSITE BEAM END REACTIONS, SEE SIMPLE SHEAR BEAM CONNECTION SCHEDULE, DWG S3.1.
 - FOR COLUMN SIZES, SEE COLUMN SCHEDULE, DWG S1.7.
 - WB INDICATES WBx15 [6] FRAMING AT FLOOR PENETRATIONS.

BID SET - NOT FOR CONSTRUCTION

COPYRIGHT: Reuse or reproduction of the contents of this document is not permitted without written permission of PORT CITY ARCHITECTURE PA



PORT CITY ARCHITECTURE

65 NEWBURY STREET
PORTLAND, ME 04101
207.761.9000
fax: 207.761.2010
lita@portcityarch.com

JACOBS CONSULTANCY
OPR Laboratory Planning Practice

VANZELM ENGINEERS
VANZELM HAYWOOD & SHADFORD, INC.

BECKER
STRUCTURAL ENGINEERS, INC.

SYTDesign CONSULTANTS
CIVIL ENGINEERING & LANDSCAPE ARCHITECTURE

ALLIED/COOK CONSTRUCTION

Favreau
CONSULTING

Titan Mechanical, Inc.
Design-Build Engineering - Mechanical Contracting

UNIVERSITY OF NEW ENGLAND

COLLEGE OF PHARMACY

716 STEVENS AVENUE, PORTLAND, ME

#	DATE	DESCRIPTION
		BID SET
	02/08/08	Date Issued
	06506	Project Number

SHEET NAME
THIRD FLOOR FRAMING PLAN

Drawn By
APP

Checked By
DSB

S1.4