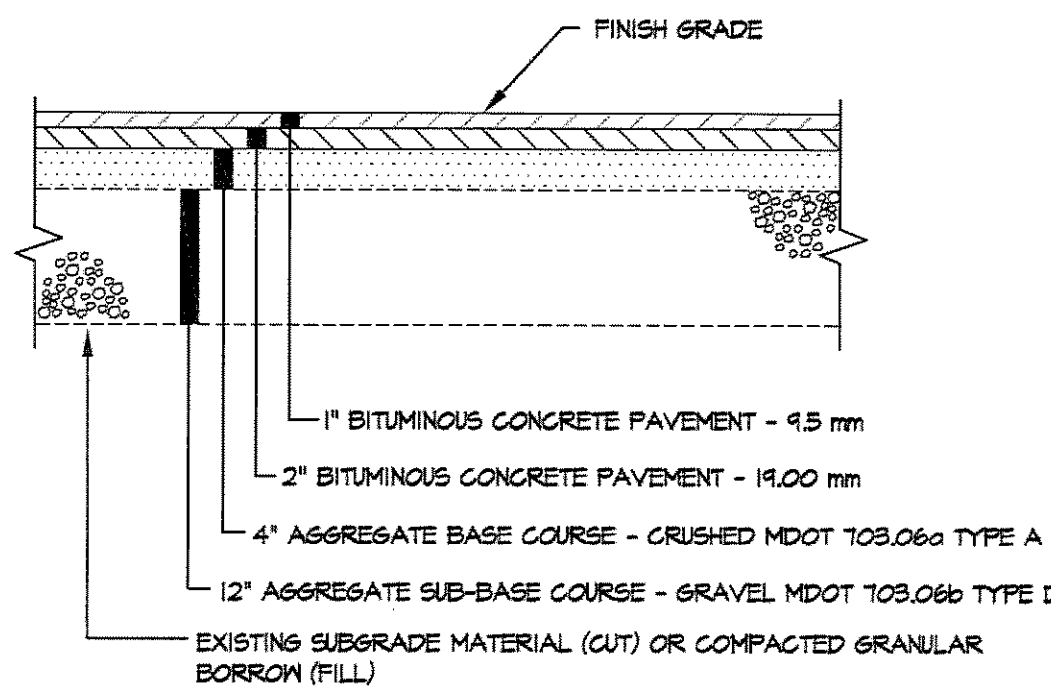
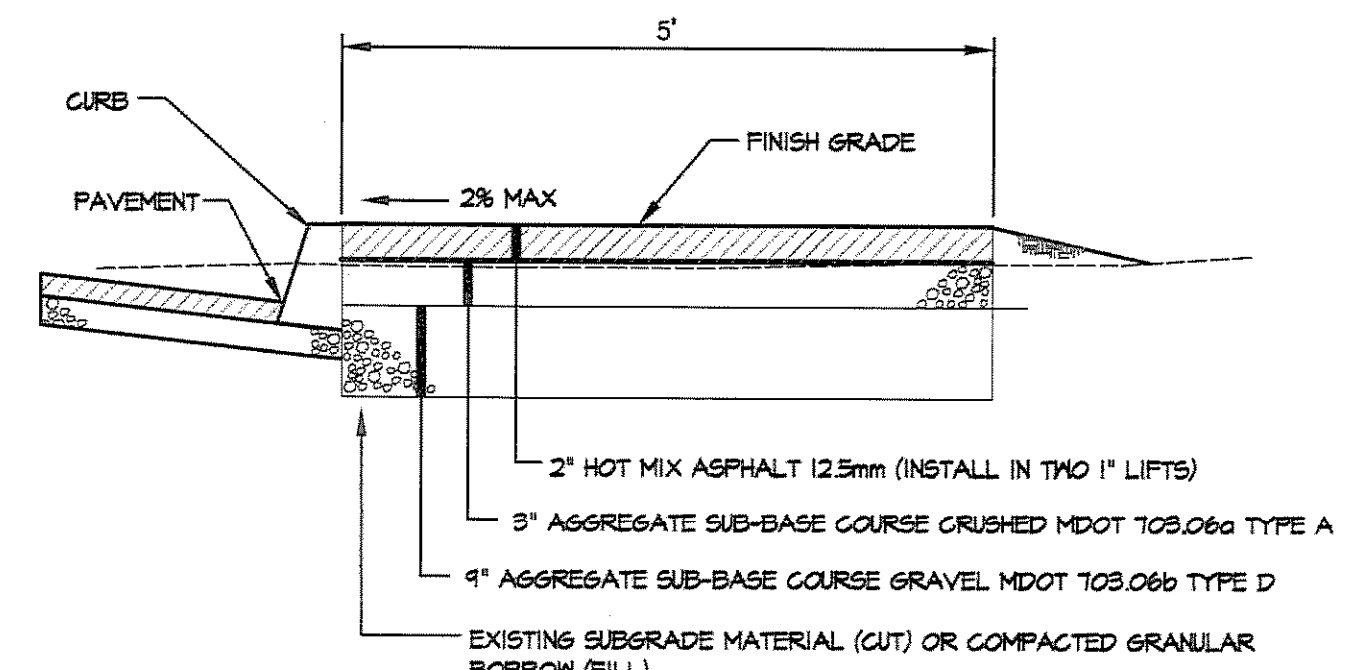


NOTES:

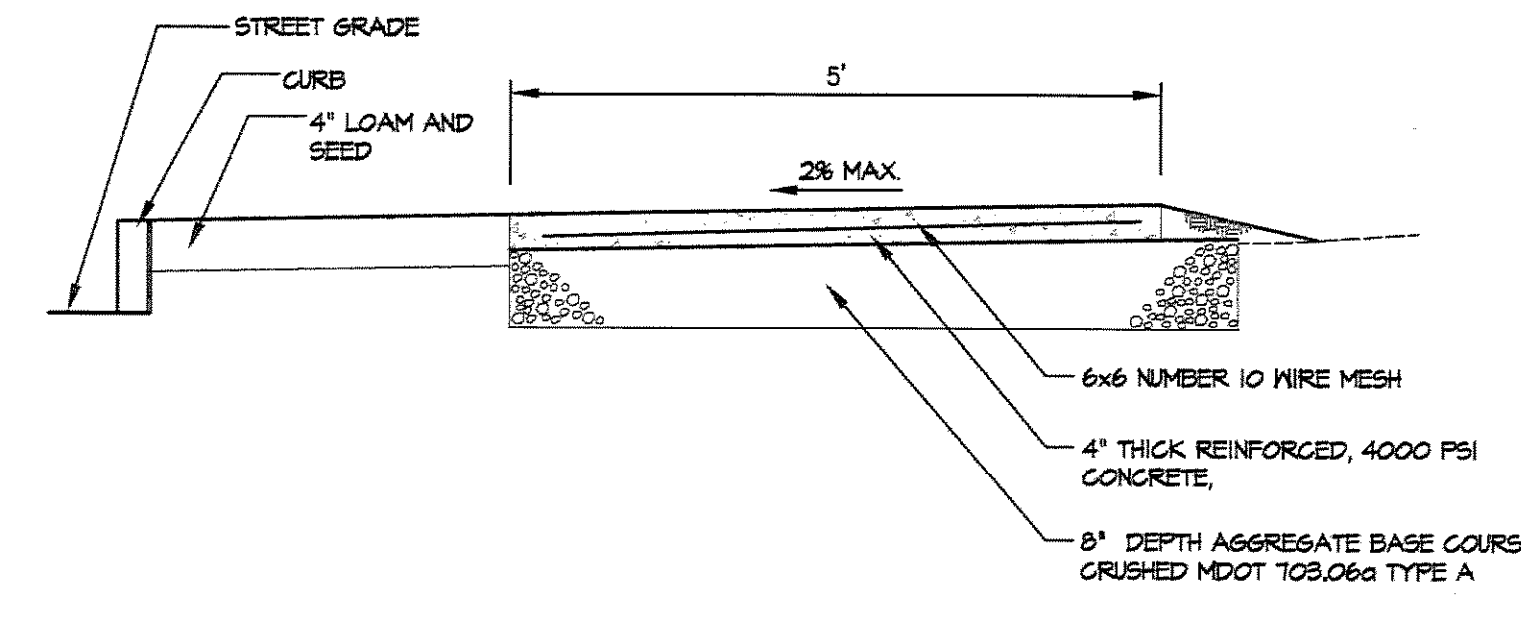
- ADDITIONAL SUBBASE GRAVEL AND/OR GEOTEXTILES MAY BE REQUIRED DURING CONSTRUCTION IF SOIL CONDITIONS WARRANT.
- BUILD-UP RECOMMENDATION IS PRELIMINARY REFER TO GEOTECHNICAL REPORT.



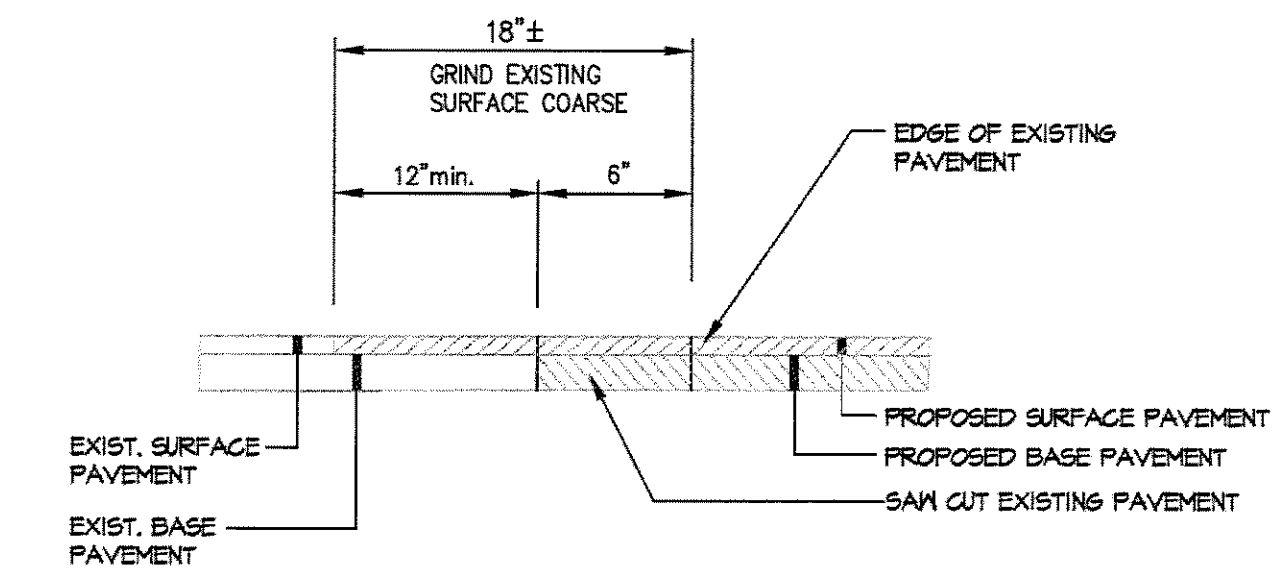
1 PARKING AREAS AND DRIVE BUILD-UP
SCALE: N.T.S.



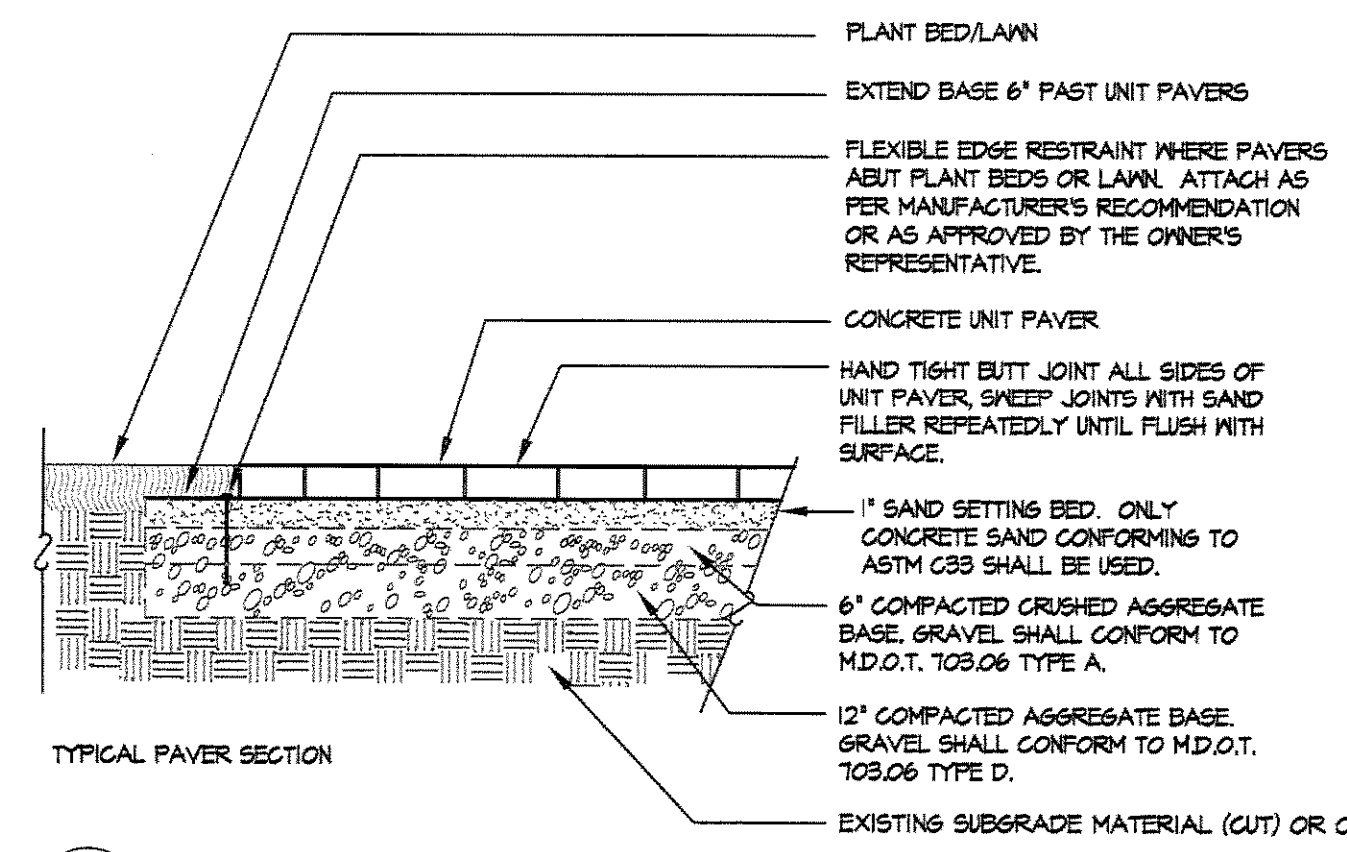
2 WALKWAY BUILD-UP (BITUMINOUS CONCRETE)
SCALE: N.T.S.



3 CONCRETE SIDEWALK (STEVENS AVENUE)
SCALE: N.T.S.

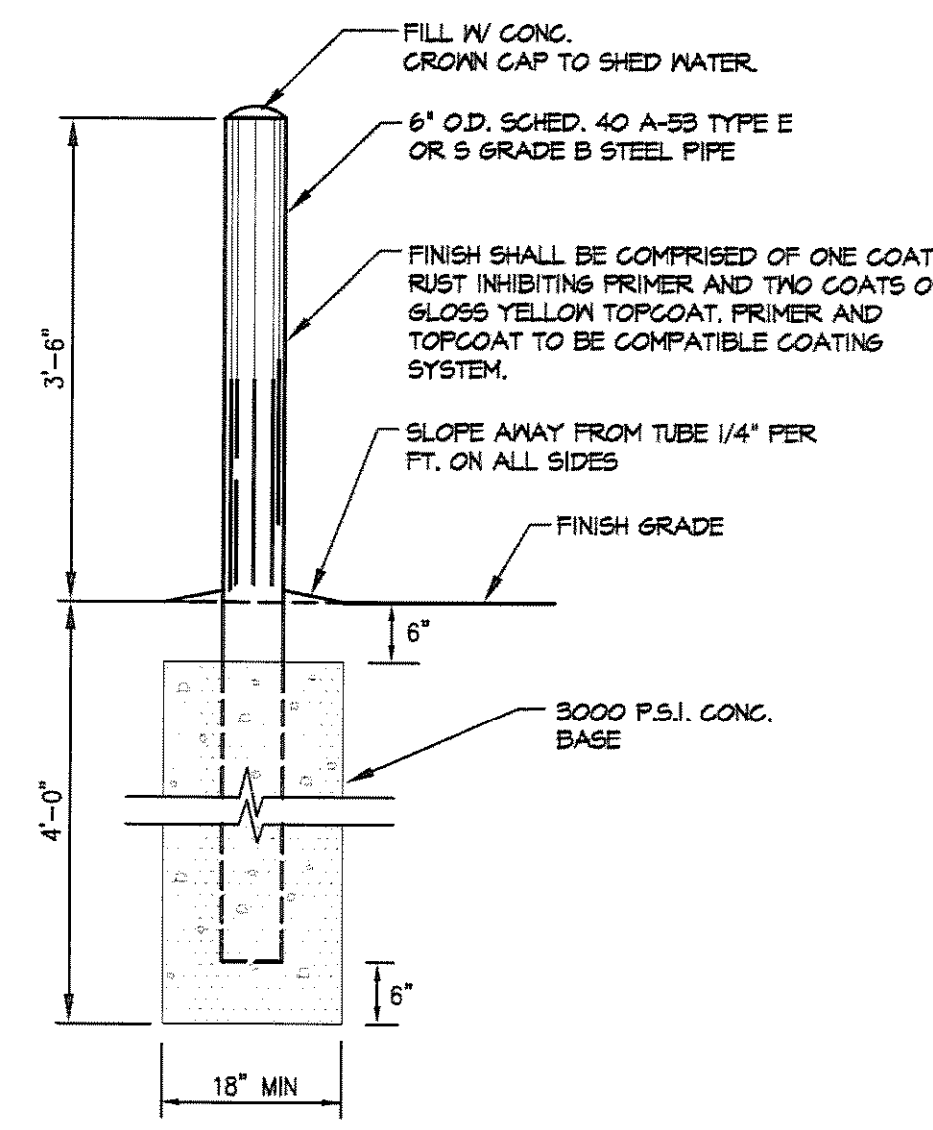


4 PAVEMENT BUTT JOINT
SCALE: N.T.S.

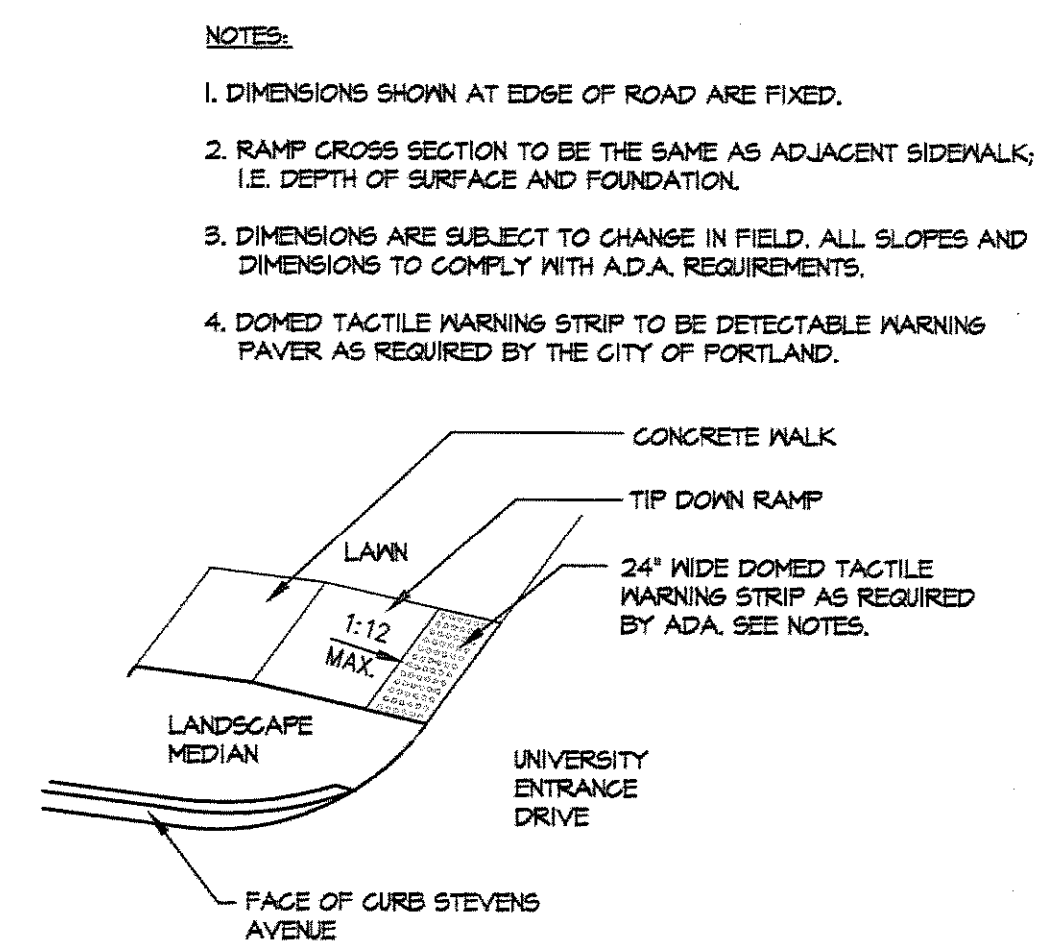


5 DECORATIVE PAVERS
SCALE: N.T.S.

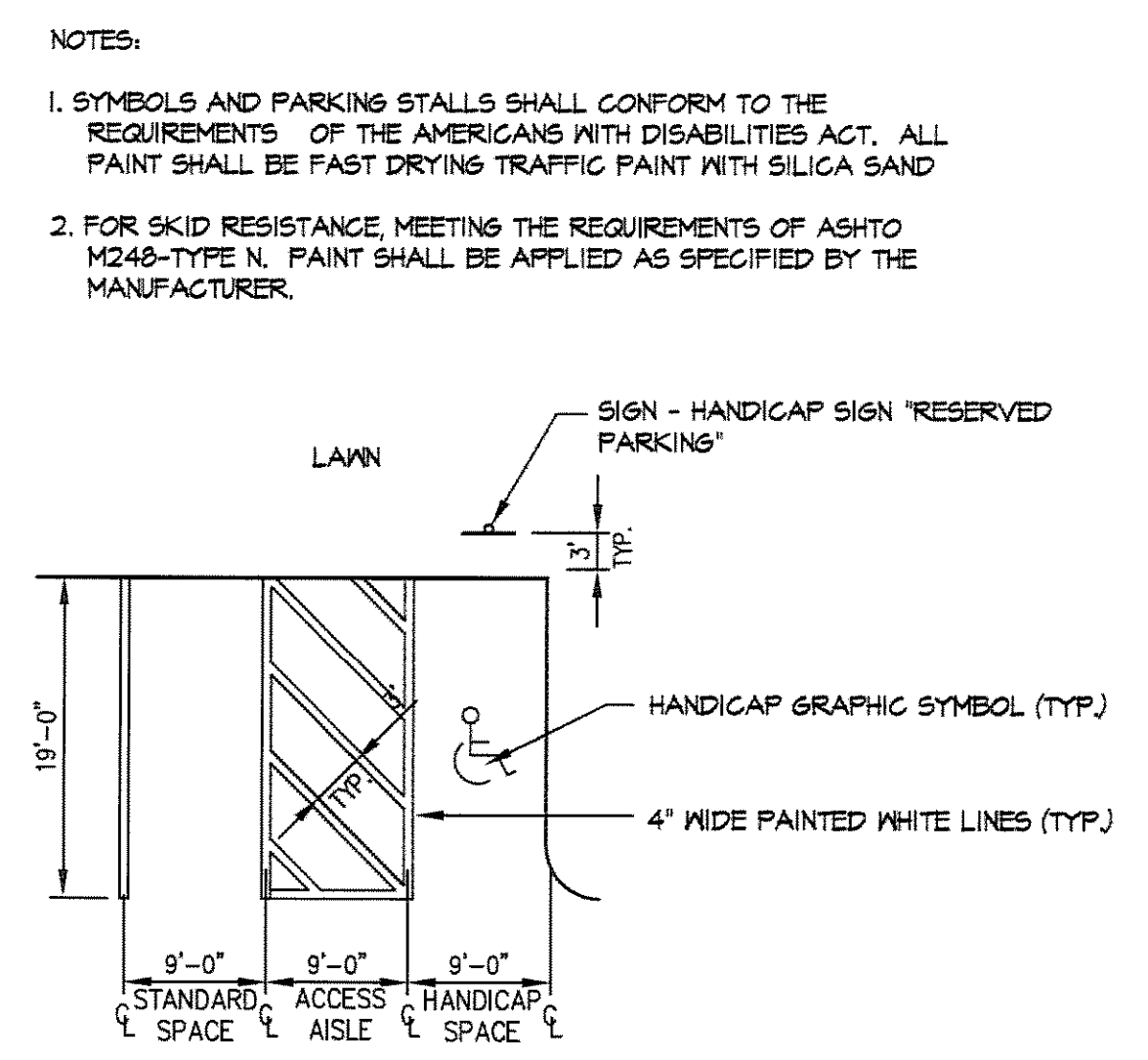
- NOTES:
- ALL PAVERS SHALL BE SAW CUT ONLY. NO FRAGMENT SHALL BE SMALLER THAN 2". FINAL SURFACE SHALL PITCH TO DRAIN PER GRADING PLAN.
 - CONCRETE UNIT PAVERS SHALL BE AS FOLLOWS:
 - COURTYARD AREA - TREVIA TUMBELED PAVES IN ASH CHARCOAL COLOR.
 - CROSSWALK AND BICYCLE RACK PAD - HOLLANDSTONE IN A GRANITE BLEND COLOR. PATTERN TO BE HERRINGBONE WITH A DOUBLE HEADER COURSE EDGE.
 - FRONT ENTRANCE - TREVIA TUMBELED PAVES IN ASH CHARCOAL COLOR.
- AS MANUFACTURED AND DISTRIBUTED BY GENEST CONCRETE OF SANFORD, MAINE (800) 644-4113. SAMPLES SHALL BE PROVIDED TO THE OWNER PRIOR TO PURCHASE FOR APPROVAL.



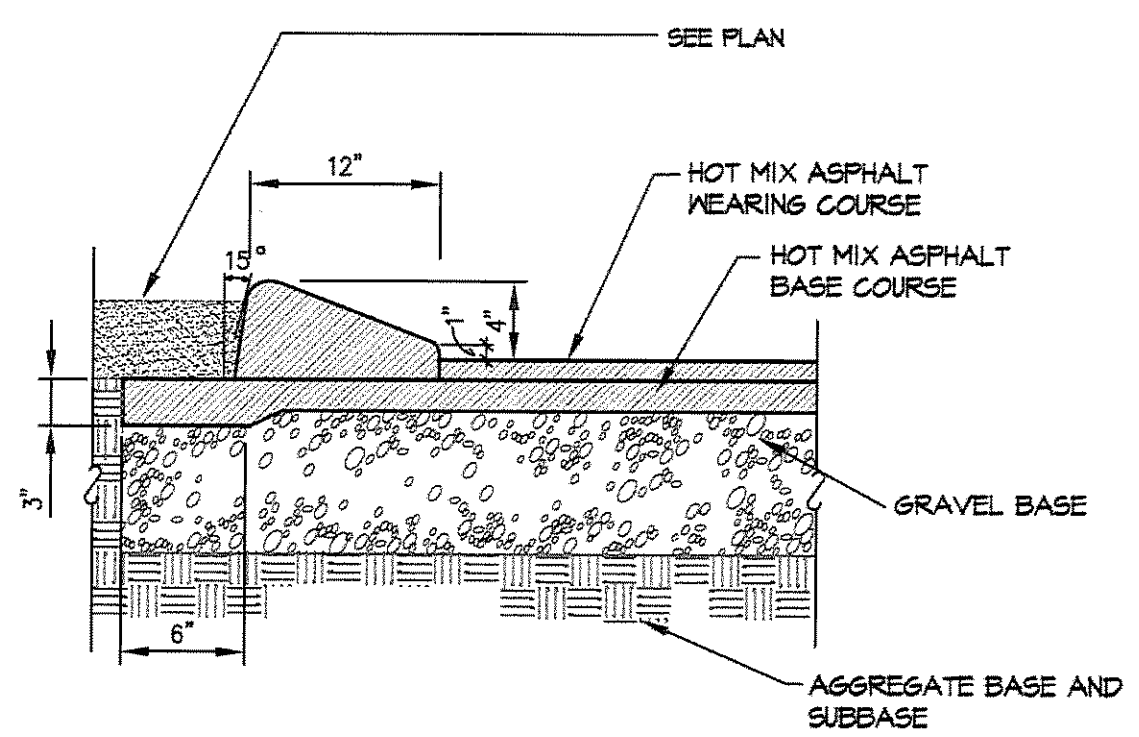
6 STEEL PROTECTIVE BOLLARD
SCALE: N.T.S.



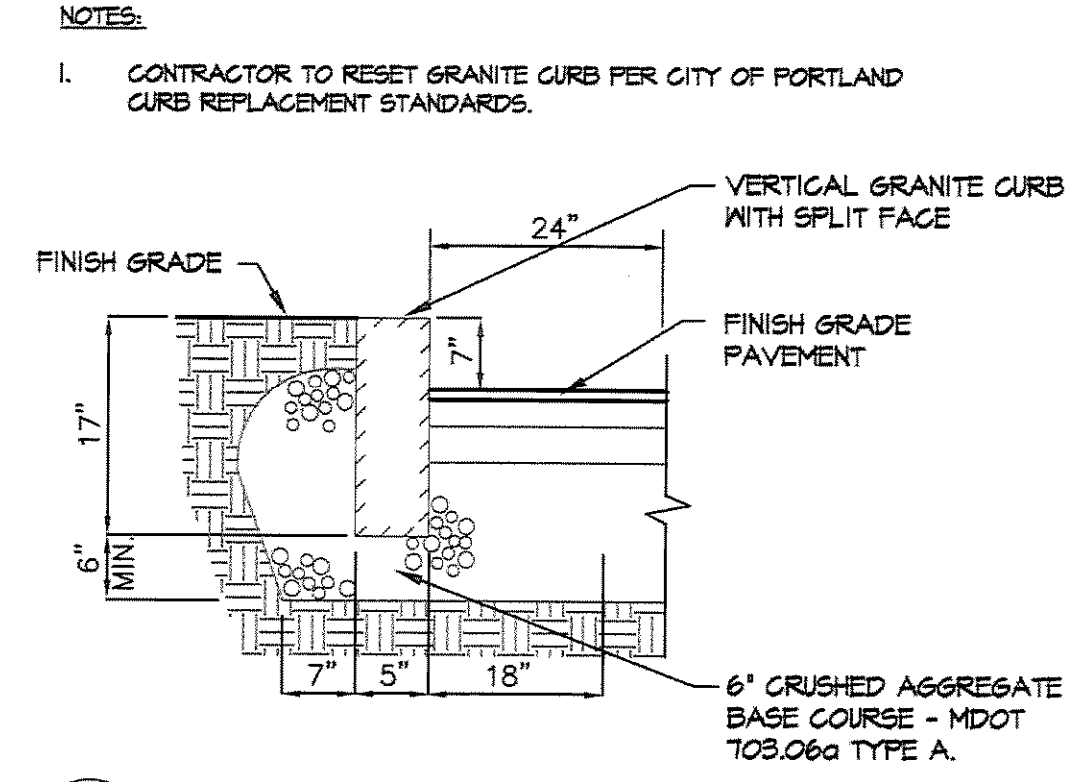
7 WALKWAY TIP DOWN
SCALE: N.T.S.



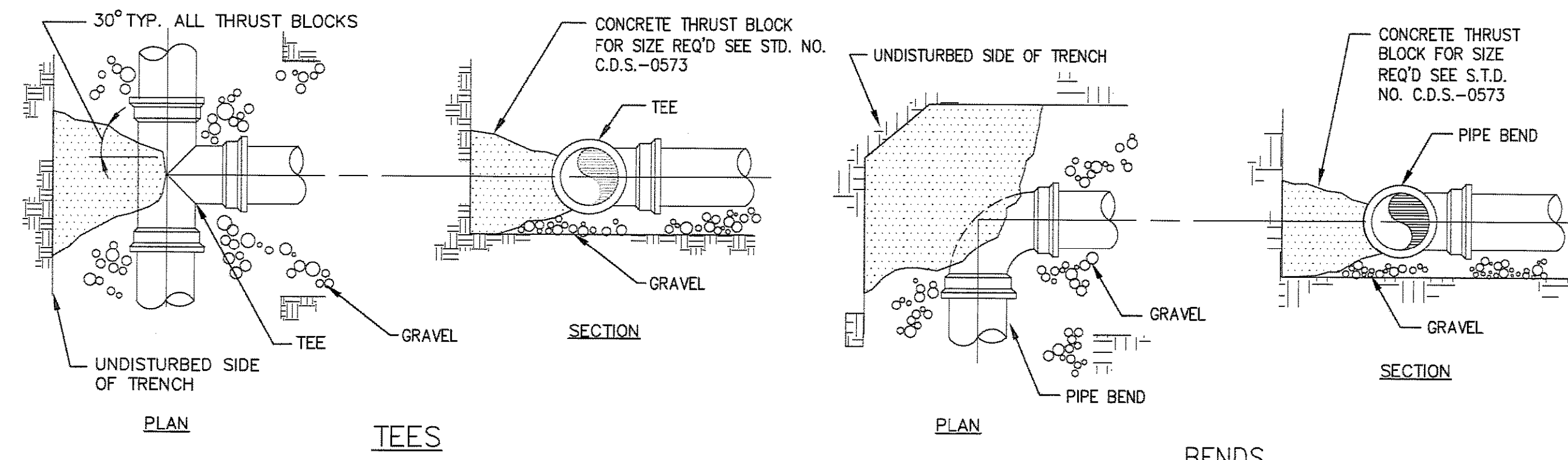
8 HANDICAP PARKING SPACE LAYOUT (2)
SCALE: N.T.S.



9 CAPE COD ASPHALT BERM
SCALE: N.T.S.



11 VERTICAL GRANITE CURB REPLACEMENT
SCALE: N.T.S.



10 TYPICAL WATER LINE THRUST BLOCK PLACEMENT
SCALE: N.T.S.

SIZE REQUIREMENTS FOR CONCRETE THRUST BLOCKS				
		BEARING ON UNDISTURBED SOIL (SQUARE FT.)		
FITTINGS	PIPE SIZE	90° BENDS	45° BENDS	TEES & PLUGS
	4"	2.0	1.0	1.0
	6"	3.0	2.0	2.0

THIS PLAN SHALL NOT BE MODIFIED WITHOUT WRITTEN PERMISSION FROM SYTDdesign Consultants, ANY ALTERATIONS, OTHERWISE, SHALL BE AT THE USER'S SOLE RISK AND WITHOUT LIABILITY TO SYTDdesign Consultants.

REV.	DATE	STATUS	BY	CHKD.	APPD.	REV.	DATE	STATUS	BY	CHKD.	APPD.
G	12/20/07	SUBMITTED TO THE CITY OF PORTLAND FOR SITE PLAN REVIEW	WTE	PBB	TWS						
F	12/06/07	ISSUED FOR DESIGN DEVELOPMENT	WTE	PBB	TWS						
E	11/27/07	ISSUED TO ARCHITECT FOR CHECK SET	PBB	PBB	TWS	1	2/8/08	ISSUED FOR BID NOT FOR CONSTRUCTION	PBB	PBB	TWS
C	10/19/07	ISSUED FOR SCHEMATIC DESIGN	PBB	PBB	TWS	J	2/5/08	REVISED AND SUBMITTED TO THE CITY OF PORTLAND FOR SITE PLAN REVIEW	PBB	PBB	TWS
B	10/12/07	REVISED AND SUBMITTED TO THE CITY OF PORTLAND FOR SITE PLAN REVIEW	PBB	PBB	TWS	I	1/24/08	PERMIT SET	PBB	PBB	TWS
A	09/04/07	SUBMITTED FOR SITE PLAN REVIEW	DAM	PBB	TWS	H	1/15/08	REVISED PER CITY OF PORTLAND PEER REVIEW COMMENTS	PBB	PBB	TWS
REV.	DATE	STATUS	BY	CHKD.	APPD.	REV.	DATE	STATUS	BY	CHKD.	APPD.

SYTDdesign CONSULTANTS
CIVIL ENGINEERING & LANDSCAPE ARCHITECTURE

PO. Box 86A
160 Longwoods Road
Cumberland, Maine 04021
tel. 207.829.6994 fax. 207.829.2231

CLIENT:
UNIVERSITY OF NEW ENGLAND
11 HILLS BEACH ROAD, BIDDEFORD, MAINE 04005

DESIGN: JAV
DRAWN: JAV
CHKD: ADJ

DATE: OCTOBER 2007
SCALE: N.T.S.

PROJ. NO.
DWG. NO.

COLLEGE OF PHARMACY
716 STEVENS AVENUE, PORTLAND, MAINE 04103

SITE DETAILS

06-21608
C-301

Sheet Name: P:\2008\PROJECTS\06-21608_08E - College of Pharmacy\DWG\0621608_08E.dwg / Title: 06-21608-08E.dwg