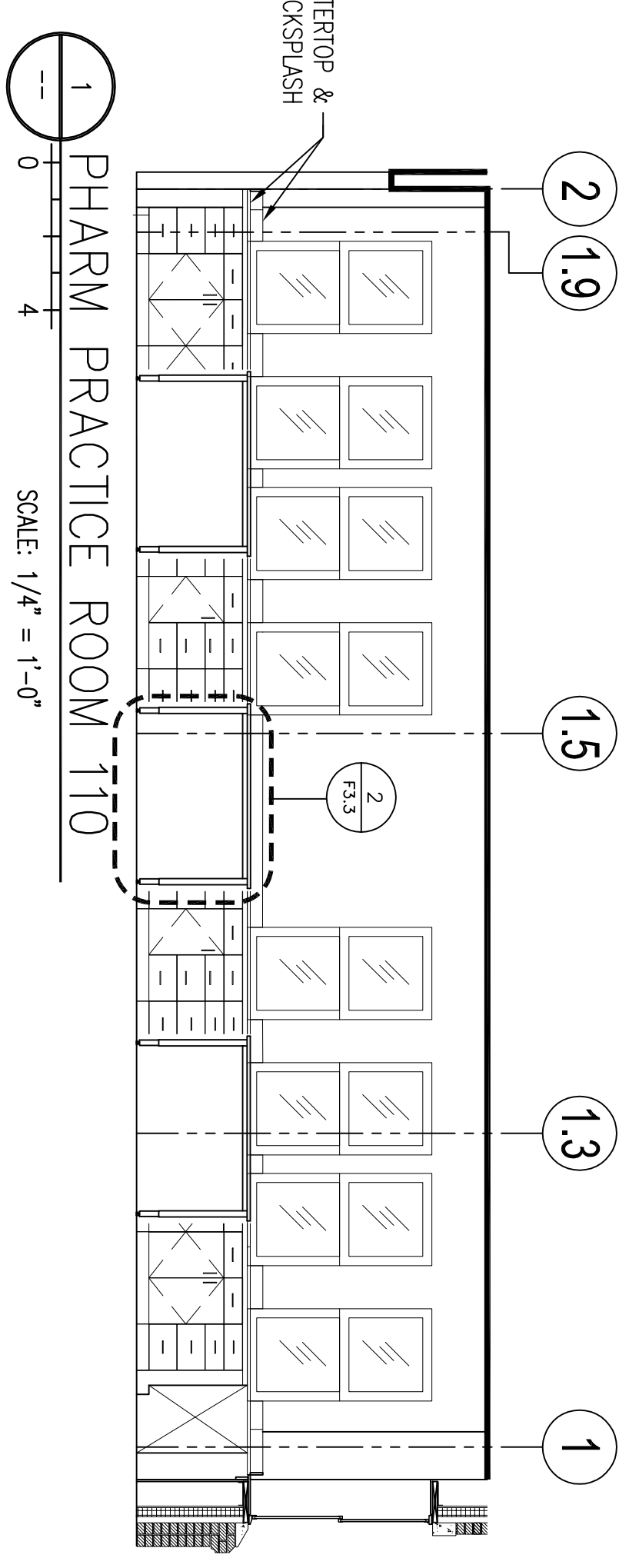


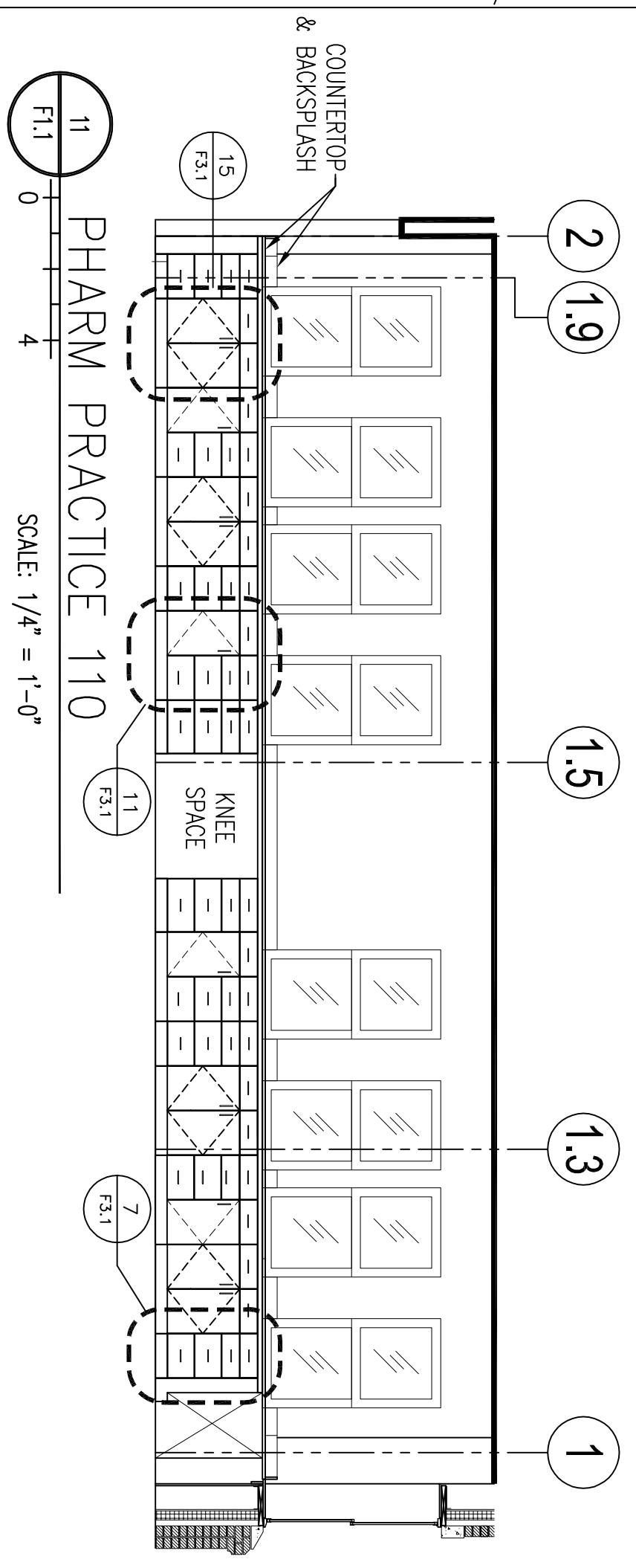
10 NOT IN USE
SCALE: 1/4" = 1'-0"

9 STER ROOM 112
SCALE: 1/4" = 1'-0"

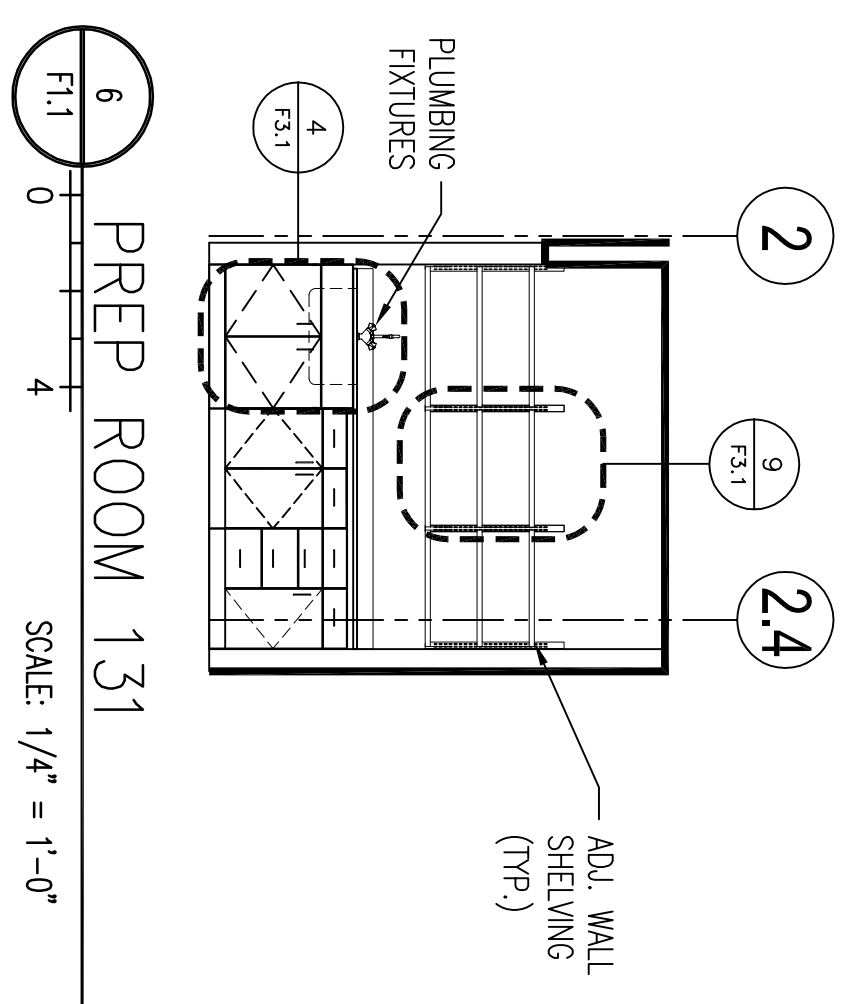
5 NOT IN USE
SCALE: 1/4" = 1'-0"



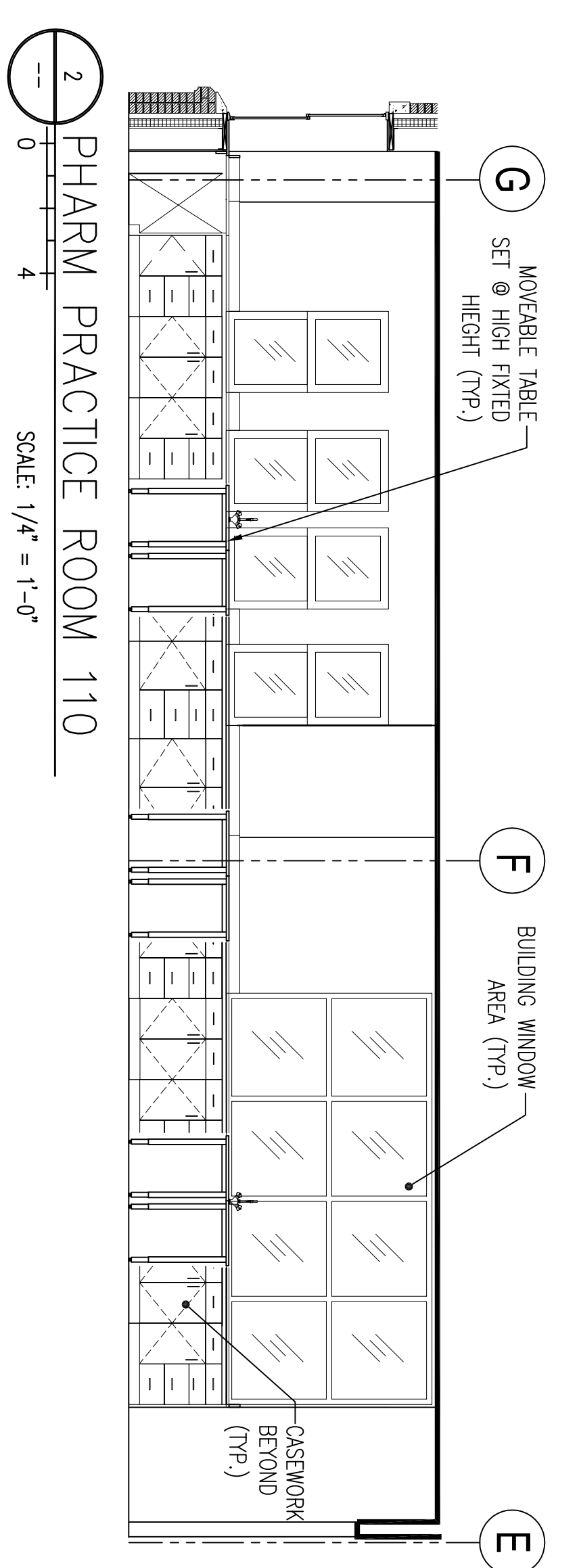
1 PHARM PRACTICE ROOM 110
SCALE: 1/4" = 1'-0"



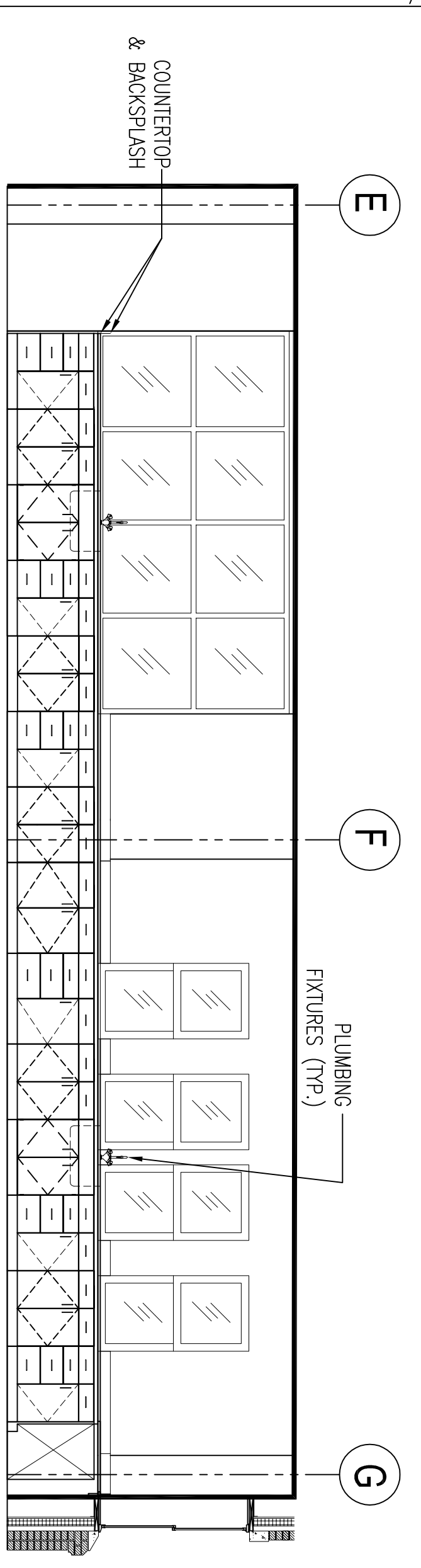
11 PHARM PRACTICE 110
SCALE: 1/4" = 1'-0"



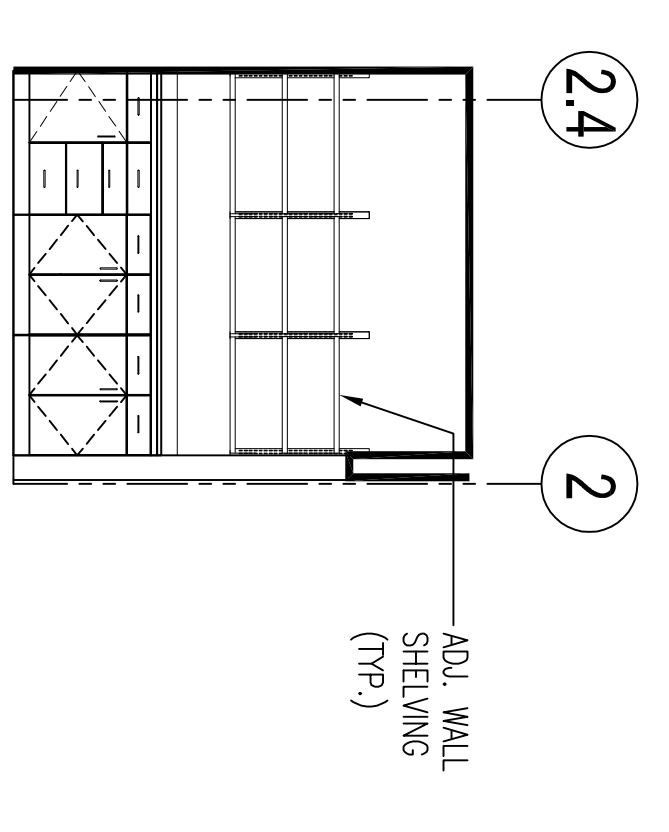
6 PREP ROOM 131
SCALE: 1/4" = 1'-0"



2 PHARM PRACTICE ROOM 110
SCALE: 1/4" = 1'-0"

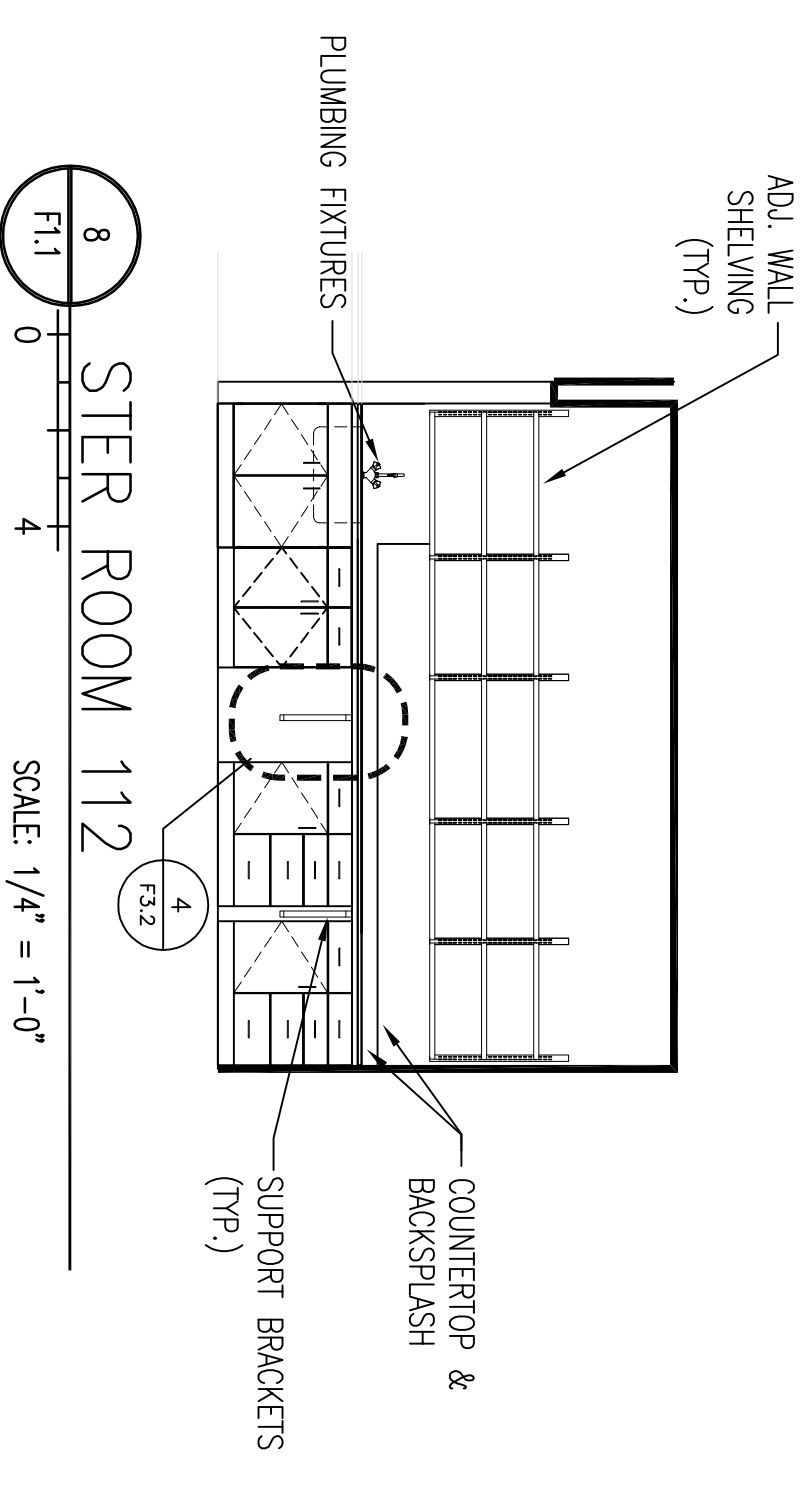


12 PHARM PRACTICE 110
SCALE: 1/4" = 1'-0"



7 PREP ROOM 131
SCALE: 1/4" = 1'-0"

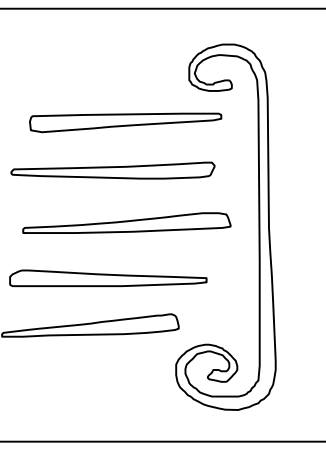
NOT USED
SCALE: 1/4" = 1'-0"



8 STER ROOM 112
SCALE: 1/4" = 1'-0"

4 NOT IN USE
SCALE: 1/4" = 1'-0"

3 NOT IN USE
SCALE: 1/4" = 1'-0"



PORT & GUTY
ARCHITECTURE
65 NEWBURY STREET
PORTLAND, ME 04101
207.761.9000
fax: 207.761.2010
lit@portcityarch.com

JACOBS CONSULTANCY
OUR LABORATORY PLANNING PARTNER

VANZBELM
VANZBELM INTERIOR & EXTERIOR, INC.
ARCHITECTS

BECKER ENGINEERS, INC.
REGISTERED ENGINEERS

SYTDesign CONSULTANTS
OFFICE OF BUILDING & LABORER ADMINISTRATION

ALLIED/COOK CONSTRUCTION

Randyquist

TD Team Mechanical Inc.
MECHANICAL CONTRACTORS

UNIVERSITY OF NEW ENGLAND
COLLEGE OF PHARMACY
716 STEVENS AVENUE, PORTLAND, ME

#	DATE	DESCRIPTION
1	02/09/08	BID SET
		BID SET
	11/21/07	

Project Number 06506

SHEET NAME
1st FLOOR ELEVATIONS
F2.1

Drawn By
Checked By

COPYRIGHT: Reuse or reproduction of this document is not permitted without written permission of PORT CITY ARCHITECTURE PA
BID SET - NOT FOR CONSTRUCTION