

CONTROLLED TEMPERATURE ROOM SCHEDULE:

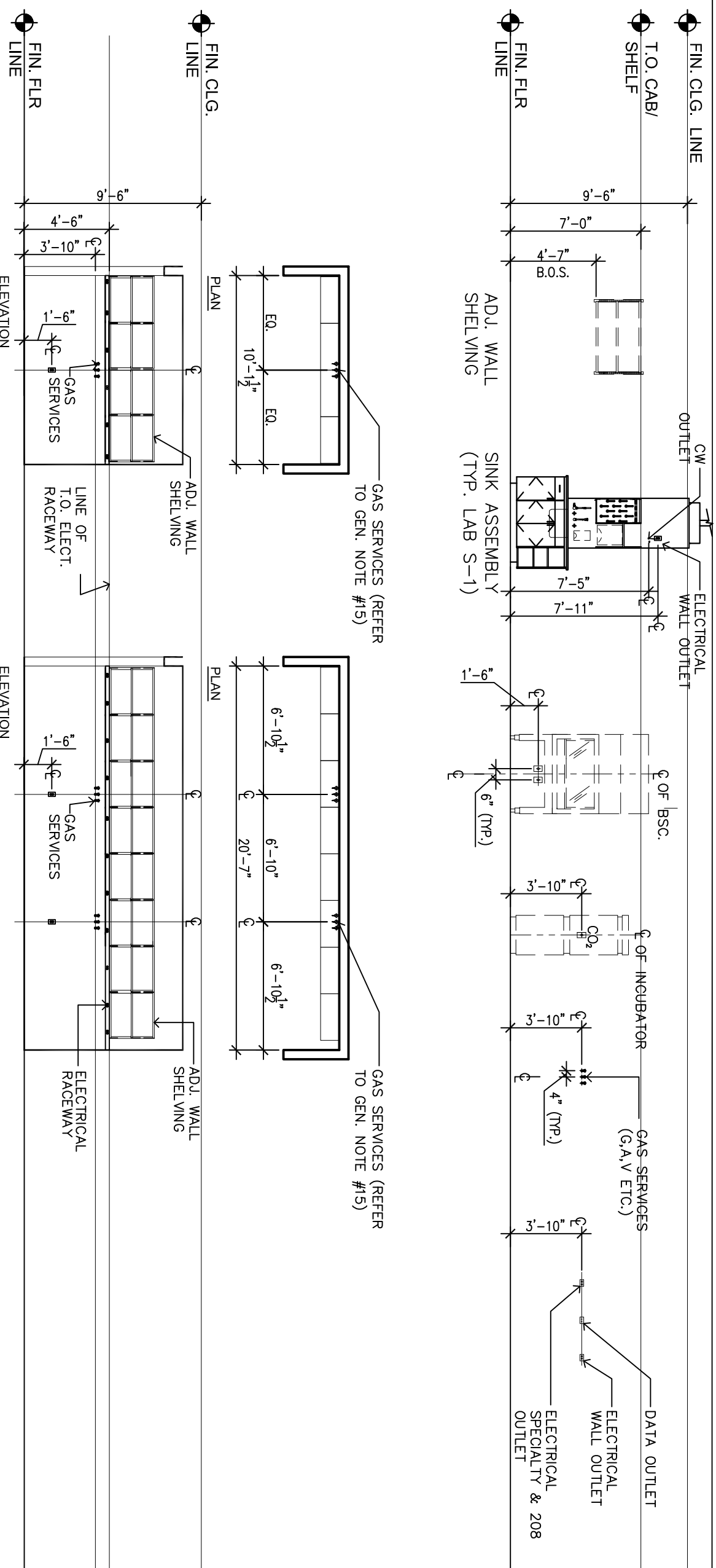
DESIGNATION	ROOM LOC.	DESCRIPTION	INT. WIDTH	INT. DEPTH	HEIGHT	F.L.R. MID./PIT. MID.	TEMP. RANGE	EXT. FINISH	INT. FINISH	REMARKS
(CTR1)	3RD FLOOR	CONTROLLED TEMP.					4°C			REFER TO SPECIFICATION SECTION 11615
(CTR2)	3RD FLOOR	CONTROLLED TEMP.					4°C			FUTURE REFER TO SPECIFICATION SECTION 11615

NOTE: DIMENSIONS PROVIDED ARE INSIDE CLEAR
2. REFER TO SPECIFICATION FOR ADD'L INFORMATION SECTION 11615

EQUIPMENT SCHEDULE:

DESIGNATION	DESCRIPTION	LENGTH	WIDTH	HEIGHT	REMARKS
(BDS)	BEDDING DISPOSAL SYSTEM				REFER TO SPECIFICATION SECTION 11710
(BD)	BEDDING DISPENSER				REFER TO SPECIFICATION SECTION 11710
(BF)	BOTTLE FILLER				REFER TO SPECIFICATION SECTION 11710
(BSC)	BIOLOGICAL SAFETY CABINET				REFER TO SPECIFICATION SECTION 11710
(BSC-PT)	BIOLOGICAL SAFETY CABINET PASS-THRU				REFER TO SPECIFICATION SECTION 11710
(GRW)	CAGE AND RACK WASHER				REFER TO SPECIFICATION SECTION 11710
(DW)	DISHWASHER				REFER TO SPECIFICATION SECTION 11710
(D)	DRYER				REFER TO SPECIFICATION SECTION 11710
(FUM6)	FUMEHOOD				REFER TO SPECIFICATION SECTION 11710
(ICE)	ICE FLAKER				REFER TO SPECIFICATION SECTION 11710
(LAMB-L)	LAMINAR FLOW CABINET				REFER TO SPECIFICATION SECTION 11710
(LST)	LARGE STEAM STERILIZER				REFER TO SPECIFICATION SECTION 11710
(MW)	MODULAR WALL				REFER TO SPECIFICATION SECTION 11710
(PT)	PASS-THRU				REFER TO SPECIFICATION SECTION 11710
(STU)	STEAM STERILIZER				REFER TO SPECIFICATION SECTION 11710
(W)	WASHER				REFER TO SPECIFICATION SECTION 11710

TYPICAL MOUNTING HEIGHTS/ DIMENSIONAL PLAN LOCATIONS:



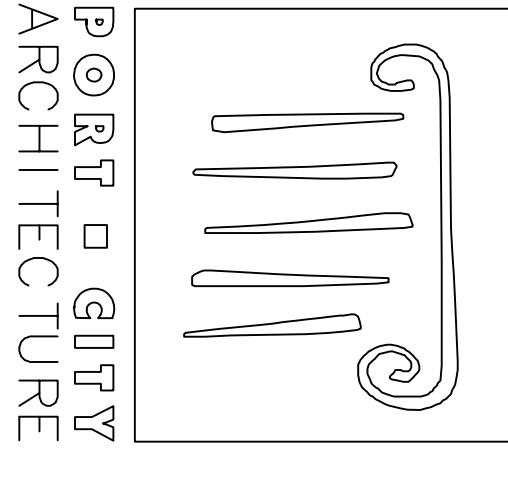
NOTES: THE ABOVE DIMENSIONED MOUNTING HEIGHTS AND PLAN DIMENSIONS ARE TYPICAL ONLY. DRAWINGS MAY SHOW SPECIFIC VARIATIONS AT SPECIFIC CONDITIONS.

SINK SCHEDULE:

DESIGNATION	MATERIAL / DESCRIPTION	LENGTH	WIDTH	DEPTH	HW	CW	RGW	EW	SP	DECK	MTD.	PANEL	MTD.	REMARKS
S-1:	EPOXY RESIN	31"	21"	12"	●	●	●	●	●	●	●	●	●	
S-2:	EPOXY RESIN	24"	18"	12"	●	●	●	●	●	●	●	●	●	
S-3:	STAINLESS STEEL	18"	18"	12"	●	●	●	●	●	●	●	●	●	INTEGRAL TO CTOP.
S-4:	STAINLESS STEEL	24"	24"	18"	●	●	●	●	●	●	●	●	●	DOUBLE BASIN INTEGRAL TO CTOP.
S-4:	STAINLESS STEEL	18"	18"	12"	●	●	●	●	●	●	●	●	●	

FIXTURE SCHEDULE:

DESIGNATION	DESCRIPTION	HANDLE	COLOR	FINISH	DISC	COLOR	MOD. NO.	REMARKS
HW/CW	MIXING FAUCET W/ VACUUM BREAKER GOOSENECK			SATIN CHROME	RED/GREEN		C14414VB-10	WATERSAVER
RGW	PURE WATER FAUCET			SATIN CHROME	WHITE		C13991SC-10	WATERSAVER BONNET HANDLE
EW	EYE WASH FIXTURE W/BACKFLOW PREVENTER			SATIN CHROME			C1EW1022BP	WATERSAVER
CW	FAUCET W/ VACUUM BREAKER GOOSENECK			SATIN CHROME	GREEN		C13914VB	WATERSAVER
A.V				SATIN CHROME	ORANGE		C12870-231WSA	WATERSAVER
G				SATIN CHROME	BLUE		C14200-231WSA	WATERSAVER
SP	PRE-RINSE SPRAY HOSE			SATIN CHROME	RED/GREEN		C1PR4411BH-110	WATERSAVER
SS1	EMERGENCY SHOWER W/MIXING VALVE			POUSHED CHROME			C1670	GUARDIAN EQUIPMENT
A.V	DOUBLE VALVES @ 90 DEGREES			SATIN CHROME	ORANGE		C12870-141WSA	LOCATED ON LIMBUICAL
G	DOUBLE VALVES @ 90 DEGREES			SATIN CHROME	YELLOW		C14200-141WSA	LOCATED ON LIMBUICAL
A.V	SINGLE VALVES W/FLANGE			SATIN CHROME	ORANGE		C12874	WALL LOCATIONS
G	SINGLE VALVES W/FLANGE			SATIN CHROME	BLUE		C14200-258WSA	WALL LOCATIONS
CW	REMOTE CONTROL WATER VALVE			SATIN CHROME	GREEN		C1740W-9	WATERSAVER
A.V	NEEDLE VALVE			SATIN CHROME	ORANGE		C1740N-CR	WATERSAVER
G	BALL VALVE			SATIN CHROME	BLUE		C1740G-C1022WSA	WATERSAVER



65 NEWBURY STREET
PORTLAND, ME 04101
207.761.9000
fax: 207.761.2100
lit@portcityarch.com



JACOBS
CONSULTANCY
OUR VISIONARY PARTNERING PROVIDES



B E C K E R
REGISTERED ENGINEERS, INC.



UNIVERSITY OF NEW ENGLAND
COLLEGE OF
PHARMACY

716 STEVENS AVENUE, PORTLAND, ME

1 02/08/08 BID SET
DATE DESCRIPTION
BID SET
Date issued 11/21/07
Project Number 06906

SHEET NAME
GENERAL NOTES,
ABBREVIATIONS,
SYMBOLS & TYP.
MOUNTING HGTS.

Drawn By
Checked By
F0.2