

PORT CITY ARCHITECTURE

65 NEWBURY STREET
PORTLAND, ME 04101
207.761.9000
fax: 207.761.2010
lita@portcityarch.com

VANZELM ENGINEERS

VANZELM HEYWOOD & SHADFORD, INC.
10 TALCOTT NOTCH FARMINGTON, CT 06032
TEL: (860) 284-3084 FAX: (860) 284-3088

PROJECT NO.: 2007120.00

BECKER
Structural Engineers, Inc.

SYTDesign CONSULTANTS
CIVIL ENGINEERING & LANDSCAPE ARCHITECTURE

ALLIED/COOK CONSTRUCTION

Favreau
MECHANICAL

Titan Mechanical, Inc.
Design-Build Engineering - Mechanical Contractors

UNIVERSITY OF NEW ENGLAND

COLLEGE OF PHARMACY

716 STEVENS AVENUE,
PORTLAND, ME

DATE	DESCRIPTION
	BID SET
02/08/08	Date Issued
06506	Project Number

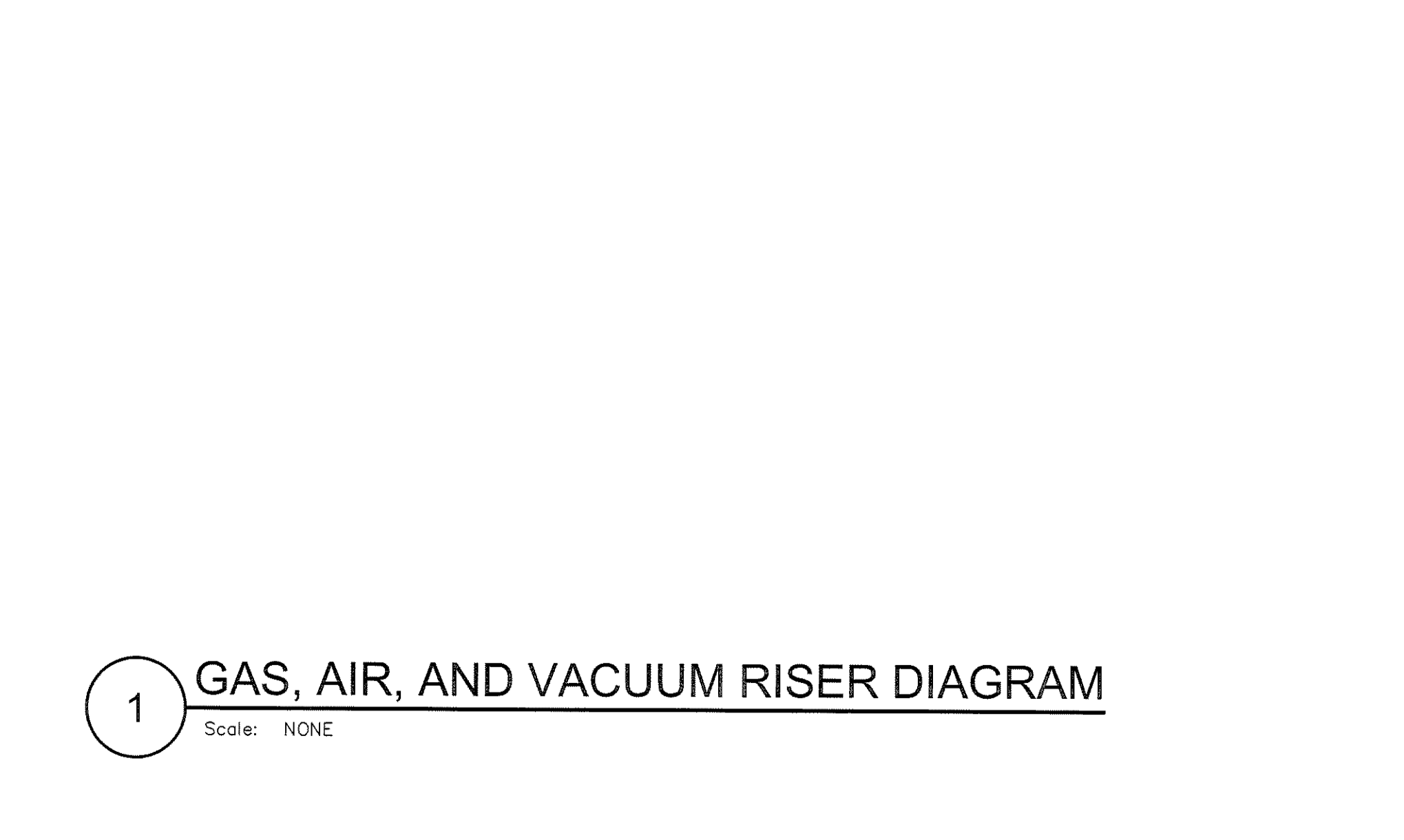
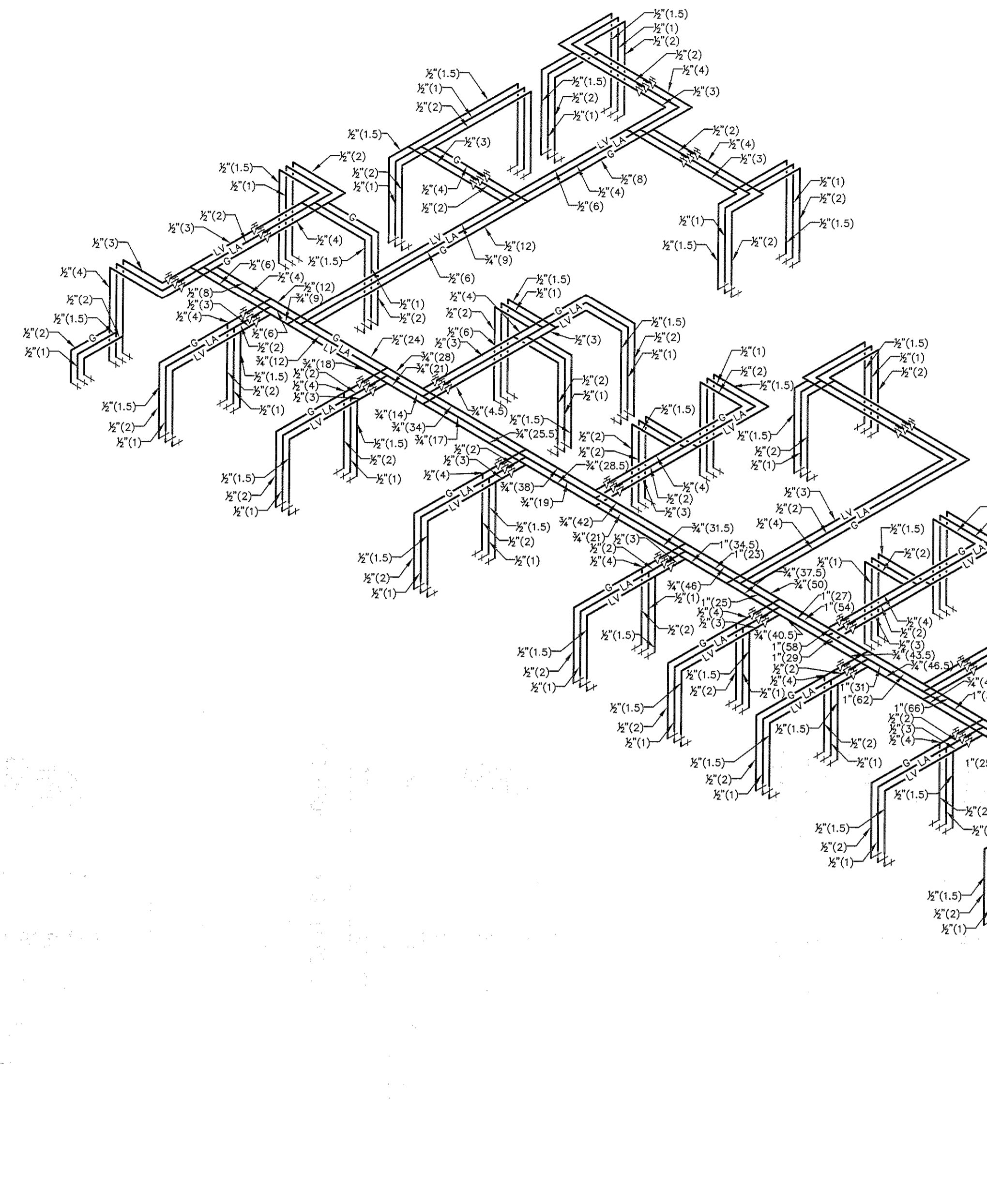
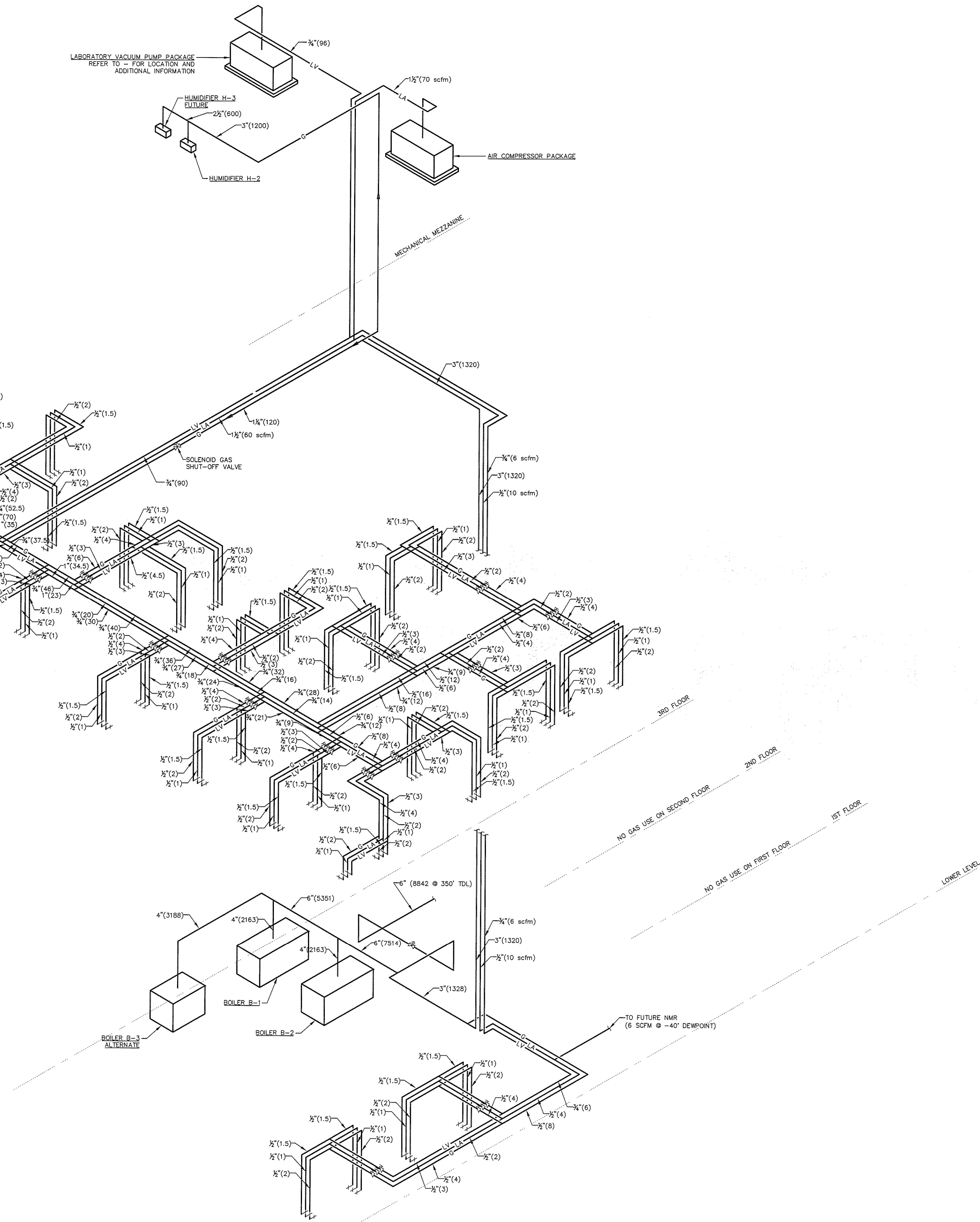
SHEET NAME
PLUMBING GAS, AIR, AND VACUUM RISER

Drawn By
SMS
Checked By
DWM

P3.1

BID SET - NOT FOR CONSTRUCTION

COPYRIGHT: Reuse or reproduction of the contents of this document is not permitted without written permission of PORT CITY ARCHITECTURE PA



1 GAS, AIR, AND VACUUM RISER DIAGRAM
Scale: NONE

IF THIS SHEET IS NOT 24 X 36 IT IS A REDUCED SCALE PRINT - SCALE ACCORDINGLY

3
2
1
0
SCALE 1"=1'

4
3
2
1
0
SCALE 3/4"=1'

6
3
2
1
0
SCALE 1/2"=1'

12
8
4
0
SCALE 1/4"=1'

20
10
0
SCALE 1/8"=1'

40
20
0
SCALE 1/16"=1'