

PORT CITY ARCHITECTURE

65 NEWBURY STREET  
PORTLAND, ME 04101  
207.761.9000  
fax: 207.761.2010  
lita@portcityarch.com

**VANZELM**  
ENGINEERS

VANZELM HEYWOOD & SHADFORD, INC.  
19 TALCOTT NOTCH FARMINGTON, CT 06032  
TEL: (860) 284-1566 FAX: (860) 284-5088

PROJECT NO.: 2007120.00

**BECKER**  
structural engineers, inc.

**SYTDesign**  
CONSULTANTS  
CIVIL ENGINEERING & LANDSCAPE ARCHITECTURE

**ALLIED/COOK**  
CONSTRUCTION

**Faireau**  
MECHANICAL

**Titan Mechanical, Inc.**  
Design-Build Engineering - Mechanical Contracting

UNIVERSITY OF NEW ENGLAND

COLLEGE OF PHARMACY

716 STEVENS AVENUE,  
PORTLAND, ME

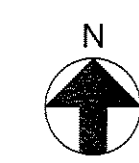
DATE	DESCRIPTION
	BID SET
Date Issued	01/08/08
Project Number	06506

SHEET NAME  
**PLUMBING LOWER LEVEL PLAN SUPPLY - ALT**

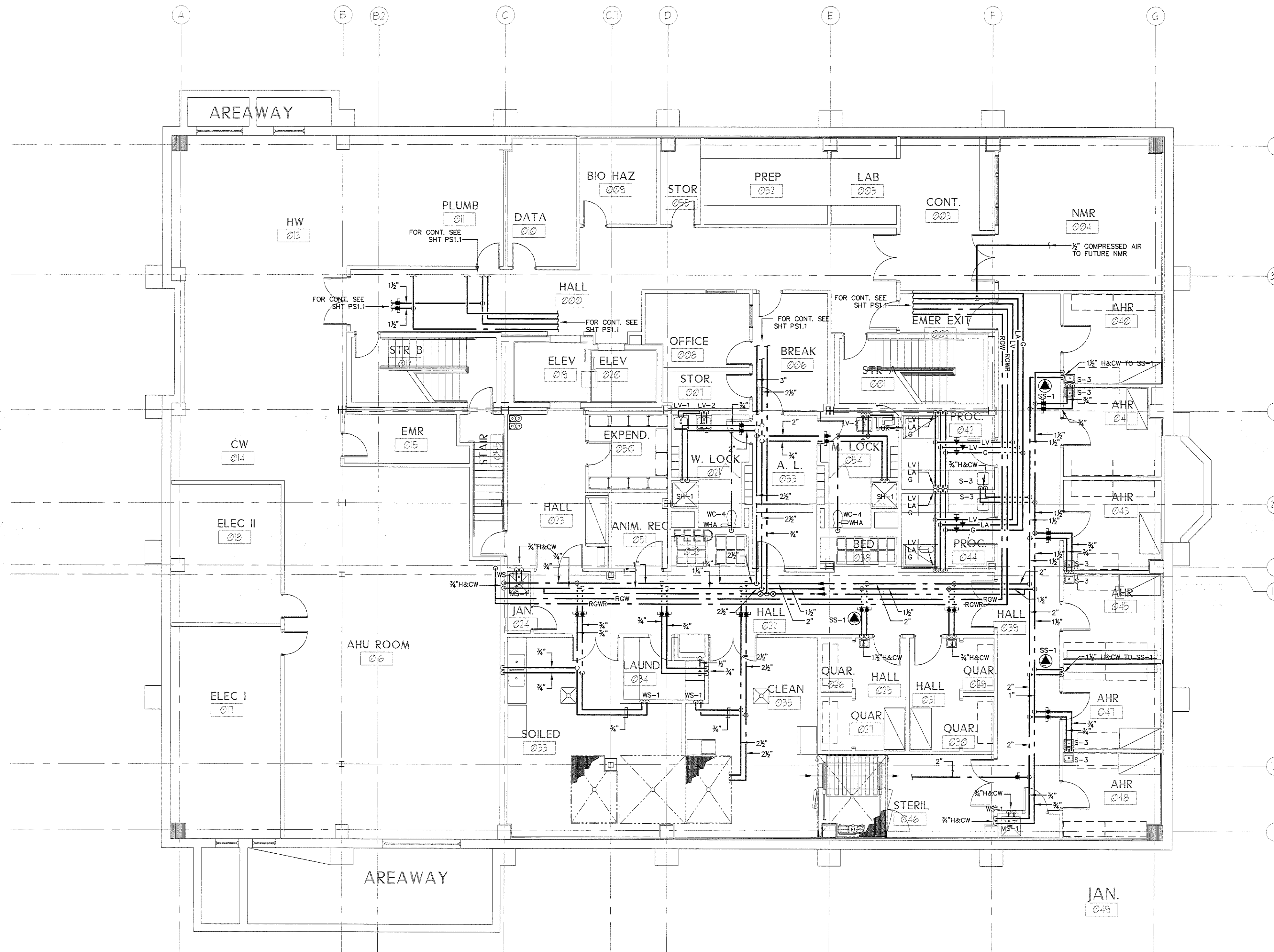
Drawn By  
SMS  
Checked By  
DWM

**PS1.1**

**BID SET - NOT FOR CONSTRUCTION**



**1 PLUMBING LOWER LEVEL PLAN - SUPPLY - ALTERNATE**  
Scale: 1/8"=1'-0"



IF THIS SHEET IS NOT 24 X 36 IT IS A REDUCED SCALE PRINT - SCALE ACCORDINGLY

0 1 2 3  
SCALE 1"=1'

0 1 2 3 4  
SCALE 3/4"=1'

0 1 2 3 4 5 6  
SCALE 1/2"=1'

0 1 2 3 4 5 6 7 8 9 10 11 12  
SCALE 1/4"=1'

0 1 2 3 4 5 6 7 8 9 10 11 12 13 14 15 16 17 18 19 20  
SCALE 1/8"=1'

0 10 20 30 40  
SCALE 1/16"=1'