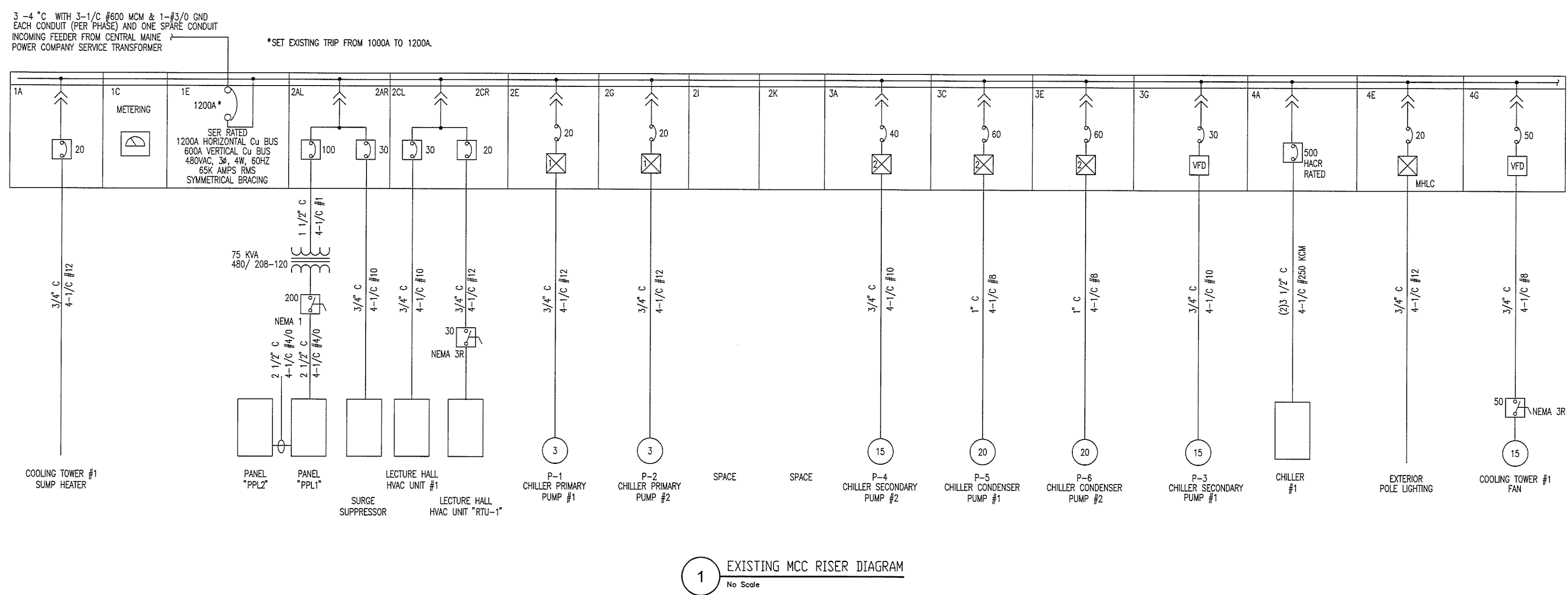
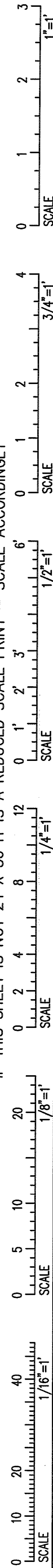
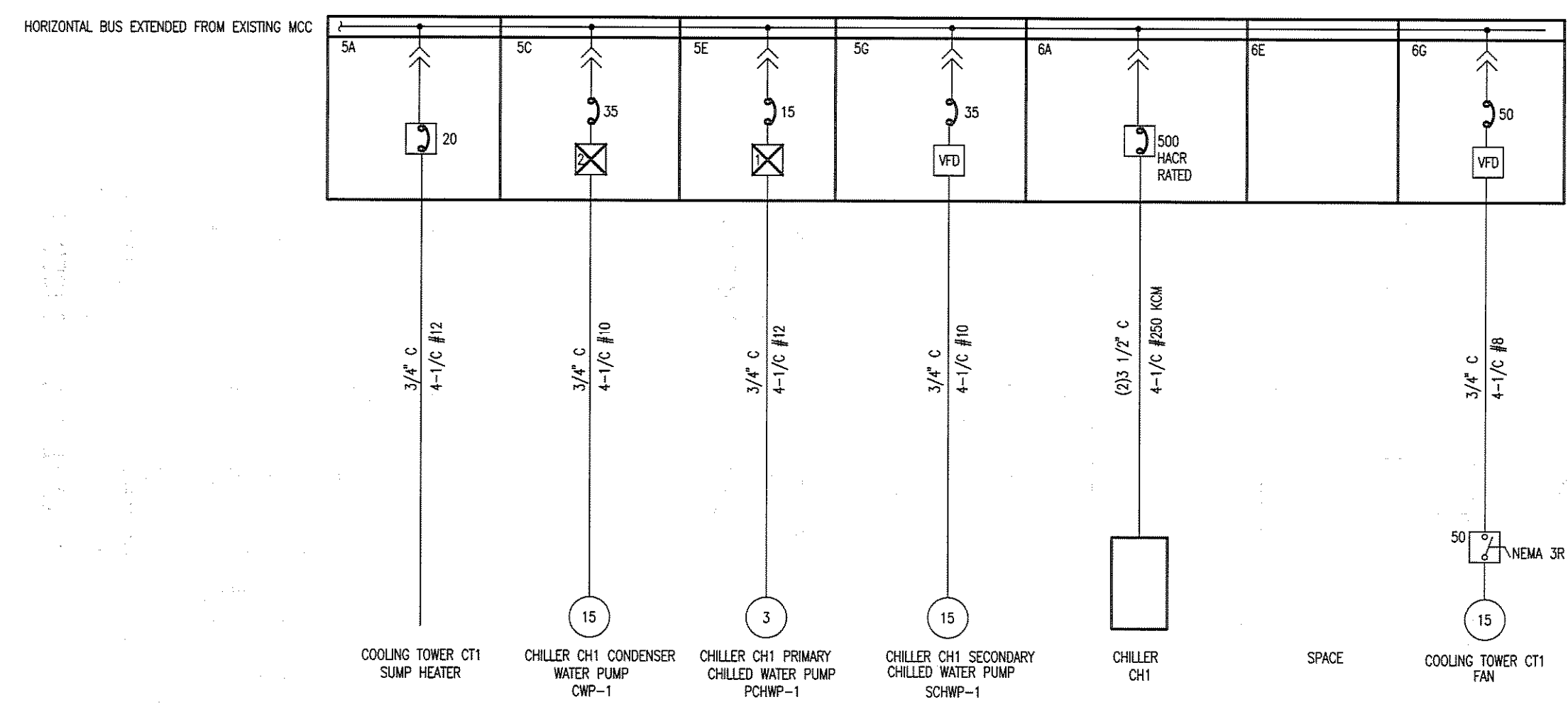


IF THIS SHEET IS NOT 24 X 36 IT IS A REDUCED SCALE PRINT - SCALE ACCORDINGLY



1 EXISTING MCC RISER DIAGRAM  
No Scale



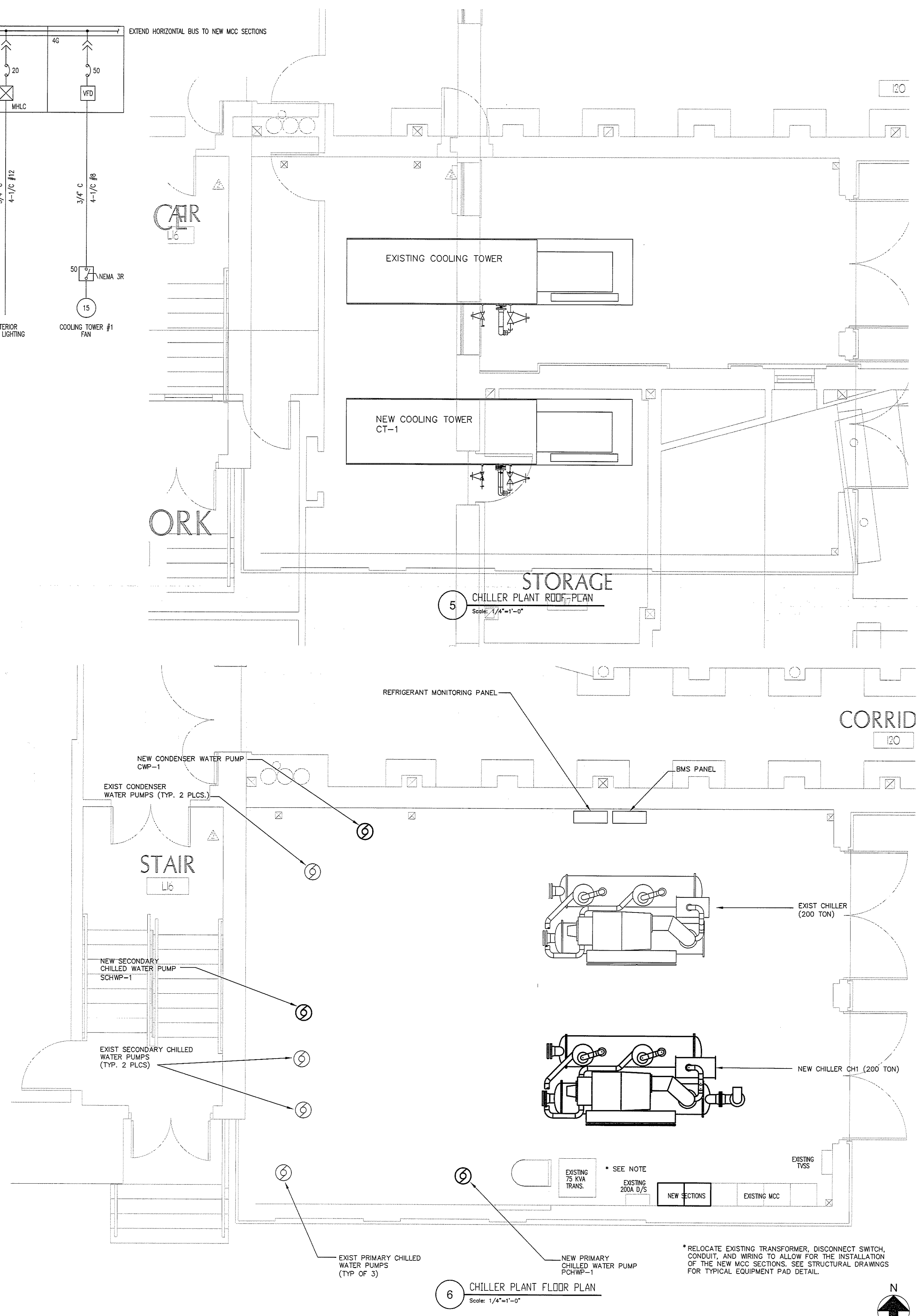
2 NEW MCC SECTIONS RISER DIAGRAM  
No Scale

1X SPACE FACTOR = 6"		1	2	3	4	5	6	
A	1A	COOLING TOWER #1 SUMP HEATER 20A BKR	2AL PANEL "PPLA" 100A BKR	2AR SURGE SUPPRESS. 30A BKR	3A P-4 CHILLER SECONDARY PUMP #2 20A BKR	4A CHILLER #1 500A BKR	5A COOLING TOWER CT1 SUMP HEATER 20A BKR	6A CHILLER CH1 500A BKR
B	1C	METERING	2C HVAC UNIT "HVAC-1" 20A BKR	2CR HVAC UNIT "RTU-1" 20A BKR	3C P-5 CHILLER CONDENSER PUMP #1 SIZE 2 FVNR	4C EXTERIOR POLE LIGHTING MHL/C 20A BKR	5C CHILLER CH1 CONDENSER WATER PUMP CWP-1 SIZE 2 FVNR	
C	1E	1000A MAIN CIRCUIT BREAKER	2E P-1 CHILLER PRIMARY PUMP #1 SIZE 1 FVNR	2F CHILLER PRIMARY PUMP #2 SIZE 1 FVNR	3E P-6 CHILLER CONDENSER PUMP #2 SIZE 2 FVNR	4E EXTERIOR POLE LIGHTING MHL/C 20A BKR	5E CHILLER CH1 PRIMARY CHILLED WATER PUMP PCHWP-1 SIZE 1 FVNR	6E SPACE
D			2G SPACE	2H SPACE	3G P-3 CHILLER SECONDARY PUMP #1	4G COOLING TOWER #1 FAN	5G CHILLER CH1 SECONDARY CHILLED WATER PUMP SCHWP-1	6G SPACE
E			2I SPACE	2J SPACE	3H VFD	4H VFD	5H VFD	6H VFD
F			2K SPACE	2L SPACE	3I VFD	4I VFD	5I VFD	6I VFD
G			2M SPACE	2N SPACE	3J VFD	4J VFD	5J VFD	6J VFD
H			2O SPACE	2P SPACE	3K VFD	4K VFD	5K VFD	6K VFD
I			2Q SPACE	2R SPACE	3L VFD	4L VFD	5L VFD	6L VFD
J			2S SPACE	2T SPACE	3M VFD	4M VFD	5M VFD	6M VFD
K			2U SPACE	2V SPACE	3N VFD	4N VFD	5N VFD	6N VFD
L			2W SPACE	2X SPACE	3O VFD	4O VFD	5O VFD	6O VFD

3 EXISTING MCC FRONT ELEVATION  
No Scale

4 NEW SECTIONS FRONT ELEVATION  
No Scale

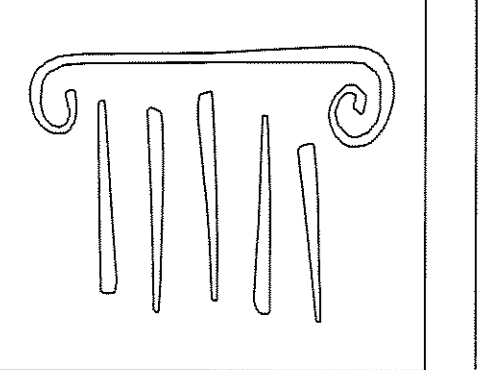
- LEGEND:
- 60 AMP CIRCUIT BREAKER
  - COMBINATION MOTOR STARTER SIZE 1, NON-REVERSING WITH MOTOR CIRCUIT PROTECTOR (MCP-CARD) 7 AMP CONTACT RATING
  - MECHANICALLY HELD (LIGHTING) CONTACTOR WITH 30 AMP CIRCUIT BREAKER
  - 30 AMP FUSED DISCONNECT SWITCH
  - 30 AMP NON-FUSED DISCONNECT SWITCH
  - 20 HORSEPOWER SQUIRREL CAGE MOTOR



5 CHILLER PLANT FLOOR PLAN  
Scale: 1/4" = 1'-0"

\*RELOCATE EXISTING TRANSFORMER, DISCONNECT SWITCH, CONDUIT, AND WIRING TO ALLOW FOR THE INSTALLATION OF THE NEW MCC SECTIONS. SEE STRUCTURAL DRAWINGS FOR TYPICAL EQUIPMENT PAD DETAIL.

**BID SET - NOT FOR CONSTRUCTION**



**PORT CITY ARCHITECTURE**

65 NEWBURY STREET  
PORTLAND, ME 04101  
207.761.9000  
fax: 207.761.2010  
lita@portcityarch.com

**VANZELM ENGINEERS**

VANZELM HEYWOOD & SHADFORD, INC.  
16 TALCOTT NOTCH FARMINGTON, CT 06032  
TEL: 860.234.3966 FAX: 860.234.3968

PROJECT NO.: 2007120.00

**BECKER structural engineers, inc.**

**SYTDesign CONSULTANTS**  
CIVIL ENGINEERING & LANDSCAPE ARCHITECTURE

**ALLIED/COOK CONSTRUCTION**

**Favreau GROUP**

**Titan Mechanical, Inc.**  
Design-Build Engineering - Mechanical Contracting

UNIVERSITY OF NEW ENGLAND

COLLEGE OF PHARMACY

716 STEVENS AVENUE,  
PORTLAND, ME

#	DATE	DESCRIPTION
		BID SET
	01/08/08	Date Issued
	06506	Project Number

SHEET NAME  
**CHILLER PLANT ELECTRICAL POWER PLAN**

Drawn By: AMM  
Checked By: MER  
**E6.0**